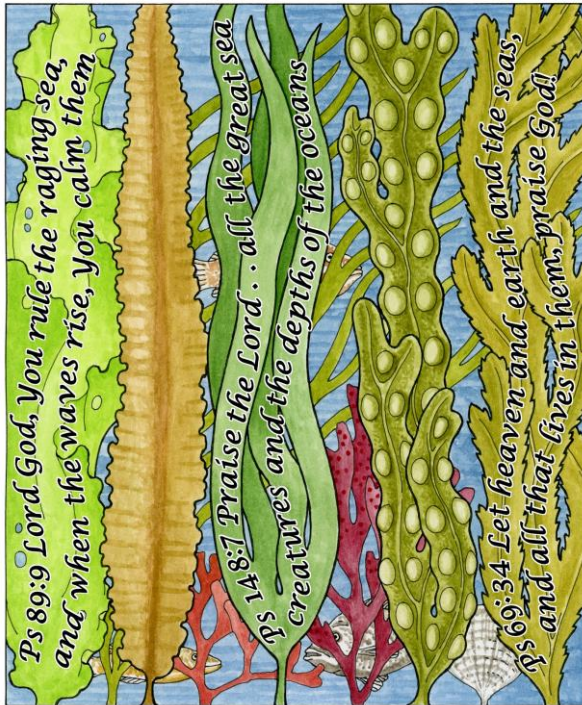


# Studland Parish News



July  
2026



St Nicholas Church Studland

See the Parish News in full colour – [www.studlandchurch.com](http://www.studlandchurch.com)

August deadline is **Wednesday July 22<sup>nd</sup> 10am**

[sharonywestman@gmail.com](mailto:sharonywestman@gmail.com) / 01929 450358

Late contributions cannot be guaranteed.

Note from the editor...

There is a little bit of a move around this month, as I have used the middle pages to show off some of our local bird life, with pictures courtesy of Mike Cheeseman, enjoy. This means our regular centre features have been moved to either side of the middle pages and the back page has our quotes for the month which focuses on visiting churches.

The summer seems to be dominated so far by the World Cup and the weather warnings for heat. Where do you stand with both of these?

I have to admit football is not my cup of tea, I guess I might be in the minority here, sorry. But for those who might want a different perspective on the competition, turn to Page 21.

I have been enjoying the heat more than the football, though again I appreciate the heat is not for everyone, and it has been oppressive at times too. So, if you are hoping for some rain to fall, check out Page 21 and see how Saint Swithun could help.

On Page 17 our 'Discover' feature focuses on exploring churches and cathedrals. For me the Cathedral in the French town of Chartres holds a special place in my heart and supports my own spirituality, for various reasons, learn more here <https://www.cathedrale-chartres.org/>. And of course, I have to mention our own little St Nicholas Church which has a central significance to life in Studland, a special place indeed.

Best wishes and enjoy the continued summer.

Sharon Westman, Editor

---

## Swanage and Studland Team Ministry

### Team Rector:

Rev Dr Ian Bird

### Team Office:

T: 01929 421117 / E: [swanage.team@btconnect.com](mailto:swanage.team@btconnect.com)

## St Nicholas Church, Studland

### Associate Minister:

Revd Dr Tony Edmonds / T: 07837 009147 / E: [revtonyedmonds@outlook.com](mailto:revtonyedmonds@outlook.com)

### Church Wardens:

Keith Tillyard – T: 07720 734055 / E: [ktillyard@btinternet.com](mailto:ktillyard@btinternet.com)

### Hon. Treasurer:

Mr Eric Stobart - T: 01929 450222 / E: [eric@thestobarts.co.uk](mailto:eric@thestobarts.co.uk)

**Hon. Secretary:** VACANT

**St Nicholas Church, Studland**  
**Rota of Readers and Sides Persons**  
**July 2026**

<b>Date</b>	<b>Service</b>	<b>Sides Person</b>	<b>Readers</b>	<b>Readings</b>
Sunday 5 <sup>th</sup> July at 10.00am	Family Communion Trinity 5. <i>Rev. John Cooper.</i>	Ginny Stobart	Polly Warner  Sara-Jayne Smith	Song of Solomon 2, v 8 to 13.  Matthew 11, v 16 to 19 & 25 to end.
Sunday 12 <sup>th</sup> July at 10.00am	Holy Communion. Trinity 6. <i>Rev. Tony Edmonds.</i>	Carol Wadley	Keith Tillyard  June Fletcher	Romans 8, v 1 to 11.  Matthew 13, v 1 to 9 & 18 to 23.
Sunday 19 <sup>th</sup> July at 10.00am	Morning Prayer. Trinity 7. <i>Rev. Tony Edmonds.</i>	Sally Hogsflesh	Margaret Chinchen  David Harley	Genesis 28, v 10 to 19a.  Matthew 13. v 24 to 30 & 36 to 43.
Sunday 26 <sup>th</sup> July at 10.00am	Holy Communion. Trinity 8. <i>Rev. Tony Edmonds.</i>	Carol Wadley	David Hogsflesh  Diana Edmonds	Romans 8, V 26 to end.  Matthew 13, v 31 to 33 & 44 to 52.

Please contact Eric Stobart by email: [eric@thestobarts.co.uk](mailto:eric@thestobarts.co.uk) if any matters arise.

## St Nicholas Parish News

Dear Friends,

Soon the holidays will be upon us. Schools break up, the university year finishes and businesses, offices and all places of work take a couple of weeks break. In Studland, life becomes very busy with visitors, day trippers and holiday makers. It is such fun to see the families heading down to the beach or along the heath footpaths all seeking out those times of fun, rest and recuperation. Of course, sometimes, it can be less than ideal. The weather may turn, someone gets stung by a bee, a favourite toy gets left behind or the car refuses to move. Finding peace can be quite hard work!

What strikes me though about the holiday season is that it's often seen as a means to an end. We take our holidays so that we can return to work and become engaged and effective once more, to recharge our batteries and so on. Alternatively, we can fill our holidays with busy experiences. We journey on to new places to learn new things, discover different places and customs and food. I suppose it's sort of alright, but I wonder if deep down, we're a bit wary of doing nothing. It's almost as if we're embarrassed to take time for leisure just for leisure's sake: no programme, no agenda, no plans, just time.

It's often said that the pinnacle of creation according to the Genesis story is the moment on the sixth day when God created man, but I think that misreads the original text. If you follow the story on from the end of chapter one to the beginning of chapter two, you'll find that the summit of all that effort was the seventh day, the Sabbath, the day when God did nothing. Doing nothing was a feature too of Jesus' ministry. Clearly, he was very active with preaching, healing and travelling, but he did take time out too. He certainly prayed a great deal and he took his disciples away from the crowds and the bustle to places of calm and quiet. There doesn't seem to have been any particular plan or object to these times. They were simply opportunities to just be.

D H Lawrence in his poem 'Pax' captures that sense of just being really well and shows us that it can be a path to encounter God:

All that matters is to be at one with the living God  
to be a creature in the house of the God of Life.

Like a cat asleep on a chair  
at peace, in peace  
and at one with the master of the house, with the mistress,  
at home, at home in the house of the living,  
sleeping on the hearth, and yawning before the fire

Sleeping on the hearth of the living world  
yawning at home before the fire of life  
feeling the presence of the living God  
like a great reassurance  
a deep calm in the heart

a presence  
as of the master sitting at the board  
in his own and greater being,  
in the house of life.

I wonder whether we might try to do that 'cat thing' of just 'being', just enjoying what it means to be alive in this moment in this place. Taking leisure for no other reason than that it is leisure and discovering in it a connection to the most deep and beautiful and significant things of life and God. As the summer draws on, I hope all of us will have an opportunity to just rest.

### **From the registers**

Holy Matrimony:

Jack William Wood and Shannon Sarah Donnelly - 6<sup>th</sup> June 2026

Interment of Ashes:

Dennis Froggatt - 9<sup>th</sup> June 2026 - Died 1<sup>st</sup> July 2023 aged 88 years

Memorial Service:

Angela Myerscough - 11<sup>th</sup> June 2026 - Died 2<sup>nd</sup> April aged 88 years

**Rev Tony Edmonds**

---

## **Church Alive Writes...**

**What has 'the Diocese' ever done for us?!**



Sometimes I have conversations with people about 'the Diocese' and, as we chat, it becomes apparent that by the term 'the Diocese' they mean our diocesan office. They see it as some sort of overstuffed money pit and often question what benefit we receive from our diocesan office. So, I thought I would take this opportunity to dispel some myths in this area and give our readers an indication of what great support we and other parishes in our diocese receive from our diocesan central staff.

Before outlining what support our central staff give us, I want to dispel the myth that there is some entity out there that is 'the Diocese.' No. We are the Diocese,

along with all the other parishes and benefices within the Diocese of Salisbury. We have a diocesan office at Emmaus House in Wilton, near Salisbury (pictured above) and a much better way of thinking about our diocesan office is as a support office for the all the parishes across the Diocese of Salisbury.

What goes on in that building? Based there is a range of departments that enable our diocese to function effectively at a parish level. Without them my life as Rector would be miserable. We have a range of experts there who are just a telephone call or e-mail away who can offer advice and help in all sorts of ways. Here are some examples of how the staff at Emmaus House support us: running ordination selection and training and supervising curate training, including the Rev'd Natalie's training; offering expert Safeguarding advice and training; advising on issues we might have with the special Church planning system (the faculty system); overseeing clergy property repairs; supporting parish fundraising; supporting ministry and mission. Importantly, the Parish Support department help us with advice and schedules that enable all incumbents and PCCs around the diocese to operate legally. Also, there is a small finance team. I could go on, but I hope this gives you a flavour of the way that we and other parishes in the diocese are supported ably by staff at Emmaus House. And to dispel another myth – the departments listed above are not bloated with staff. To carry out the support briefly listed above (and more), there are less than 38 full time equivalent staff. So, let us thank God for all those in Emmaus House who support us in this parish in so many different ways along with the 423 other parishes across the Diocese of Salisbury!

Last month, across all of our four churches in the Swanage and Studland Team we followed a series entitled *Generous God, Generous People*. We have been exploring God's generosity to us and our call to be a generous people in the way we use our time, talents and treasure to the glory of God. I hope you have found the series both encouraging and challenging. It was an opportunity to review prayerfully our volunteering, how we can use our gifts and talents effectively in our churches and to review our giving too. Those on the Swanage electoral roll also received a letter outlining our difficult financial position and how we can respond to ensure that we continue our worship and mission.

We were reminded again in this series that all we have comes from our generous God. King David succinctly sums this up, in those familiar words from the First Book of Chronicles as he declares: 'Yours, Lord, is the greatness and the power and the glory and the majesty and the splendour, for everything in heaven and on earth is yours.' (1Chronicles 29: 11.). As the body of Christ, we all have a role to play in our churches and supporting mission and activities that share the love of Jesus Christ with others in our community and beyond. So let us continue to work together and be communities of light and hope that we are called to be.

**Every Blessing  
Ian, Rector**

## STUDLAND WI – Wednesday 10<sup>th</sup> June 2026

The President welcomed all members who attended the meeting. Apologies were given for those who were unable to attend.

Our June meeting was our annual BBQ social evening. Usually held at the cricket pavilion on Studland Bay House cricket ground. Due to the unseasonable weather, we had been given the opportunity to hold our BBQ on the front lawn at SBH and use the reception rooms for our meeting. Thank you to Michael and Sarah Ferguson for allowing us to use the house to keep dry and warm.

Our meeting included updates from the National Meeting held the week before and the results of the resolutions.

A big vote of thanks was given to Debbie for arranging our trip last month to Brownsea Island. It was the perfect sunny day to take the boat across from Poole and enjoy the day on the island. We were very privileged to have a guided tour of inside the castle and make use of the facilities. After a wander around the island and the castle gardens we were served a full afternoon tea. A special day out for us all and we hope to be able to return next year.

Once all business had been concluded we were treated to our BBQ feast.

A very big thank you goes out to all the ladies who made salads to share and to our chefs for the evening Mike & Mark who are our resident WI chefs who ensure our BBQ is all ready to go. Pimms was on offer and dessert was strawberries & cream.

**Next meeting** is Wednesday 8<sup>th</sup> July in Studland Village Hall at 7.30pm. Our speaker for the evening will be Paul Fuller talking about “Garden Show Showing”. All you need to know about how to prepare and display your exhibits for the Summer Show. Hopefully Paul will let us know into his secrets on how to win the top prizes!

WI is here for all ladies of all ages, so why not come along and join our friendly group. Fun, friendship and plenty of laughter. We meet the 2<sup>nd</sup> Wednesday of the month, and we would love to welcome you to join us.

**Lynn Elliott**

---

### Studland History Group

The next meeting is on Wednesday 15<sup>th</sup> July in the village hall when Carlton Hobbs will give a talk on “John Harris and the Squatters or the true story of Agglestone House”.



All welcome; visitors £4 to include tea/coffee and biscuits. The speaker for the 19<sup>th</sup> of August is yet to be confirmed but, on the 16<sup>th</sup> of September Stephen Yeoman will give a talk on the “1905 Bournemouth Tram Disaster”.

**Joyce Meates, Secretary**  
**Tel. 07816988890**



## STUDLAND GARDENING ASSOCIATION

July is a busy time in the garden, the flower beds are in full bloom and the vegetables patch is also in full production.

Dead head roses and sweet peas cut back perennials including lupins, hardy geraniums delphiniums to encourage a second flowering.

To get a bigger dahlia bloom pinch out the side buds leaving the main bud. Stake the taller plants as one summer storm can knock them all to the ground.

Prune Wisteria, remove the whippy side shoots from the main branch framework to about 20 cm from their base.

Feed your containers and baskets with a liquid feed and keep terracotta pots damp which will help stop them drying out.

Collect seed from plants you want to grow next year.

Keep an eye out for aphids, fungus and black spot on your roses.

Keep removing the side shoots and low leaves from your tomatoes and support your cucumbers, these need regular feeding at this time of year.

Pick, dry and freeze your herbs for use through the year.

Resist the temptation to pick more Rhubarb, the cut off is the end of June, leave the stalks in place, this will allow the plant to reserve energy for next year.

The Studland Summer Plant and Produce Show is coming up quickly, entries can be submitted on the evening of 28<sup>th</sup> July in the committee room at the back of the village hall or dropped into the letter box next to the gates of Coombe House, Ferry Road.

The WhatsApp group has been established for members of the Garden Association for the purpose of garden tips, plant swap or excess plants and association news, contact us for information on this or any queries about entering the show **07956997886**.



---

### Updates from the National Trust:

#### Bumper year for butterflies?

We've seen a welcome influx of butterflies this year – including huge numbers of painted ladies.

These migrants travel to the UK all the way from North Africa. They can cover up to 100 miles per day at 30mph and even fly through the night. Look out for them across the heaths and coastal grasslands. Thistles and nettles are some of their favourite food plants – why not leave a patch of them in your garden and create your own wildlife-haven?



This painted lady on red valerian was snapped by Worth Matravers resident, Mike Wenham. When we put his photos on our Facebook page (National Trust Purbeck Countryside), the post received over 2,000 'likes' – making it one of our most popular stories ever!

**(Photo: Mike Wenham)**

### **Be tick aware**

We usually spread the love for all creatures, but there are some to be cautious of. Ticks are tiny spider-like parasites that latch onto animals (including us) to feed on blood.

In Purbeck, we have lots of deer – which are major carriers of ticks. To keep safe while enjoying our wonderful outdoors:

- Stay on clearly defined paths and avoid long grass
- Wear long trousers and socks
- Use insect repellent
- Check yourself (and pets) regularly for ticks

If you've been bitten or have recently spent time outdoors and developed an unusual rash or other symptoms, contact your GP. Some tick bites can result in an infection called Lyme Disease so early awareness matters. Find out more here: <https://www.lymeresourcecentre.com/about-ticks>

**(Photo: Centre's for Disease Control and Prevention)**



If you have any queries, email us on [purbeck@nationaltrust.org.uk](mailto:purbeck@nationaltrust.org.uk).

**Cathy Lewis, National Trust**

---

## **Corfe Castle Surgery/The Patient Participation Group News**

I would like to thank all those who kindly completed our questionnaire which we did in conjunction with the Corfe Surgery during the month of May. Our main aims were to attract new PPG members and importantly to find out if the Surgery is offering acceptable access times to the Practice population.

I am pleased to say that results have been positive with some very constructive and helpful comments received. As expected, patients are very pleased overall with the Surgery and the exceptional service received from the dedicated team (I only received one patient who refused to complete the questionnaire as he was not happy but his comments were valid and mattered greatly to him so they were noted.)

The full results will be discussed with the Surgery and the PPG members at our next meeting in early July and will be reported at a later date but for now I would like to record the very complimentary comments received about the Reception team who do their best in often difficult situations; the Surgery is getting much busier so organising us all is becoming more challenging for the team and for us as patients. Confidentiality at the reception desk was also noted several times.

Patients have also asked for a cover outside the prescription collection point - something mentioned before so we will discuss this again.

My thanks to my PPG committee members who helped to collect the information and to the Surgery team with whom we have a very good working relationship allowing us to be the 'critical friend' to our surgery.

And please do continue to contact the PPG through the surgery if there is anything you would like us to raise with Dr Lepper and the team.

**Kind regards**  
**Maggie Hardy, PPG Chair**

---

## **Swanage Medical Practice Patient Participation Group**

### **Newsletters about making the best use of local health services**

All six of the newsletters produced by the PPG about making the best use of local health services are now available on the Practice website ([www.swanagemedical.org.uk](http://www.swanagemedical.org.uk)). You can find them under News.

The newsletters cover the following topics:

1. Sources of information, advice and support on health issues
2. Keeping Well and Self Care
3. Services provided by Community Pharmacies
4. Community Health Services you can refer yourself to
5. Maternity Services and Services for Children, Young People and Families
6. Mental Health Services.

We are now producing versions of the newsletters that are suitable for printing out in hard copy.

### **PPG Meetings**

The PPG will next meet at the Surgery on Tuesday 14<sup>th</sup> July 2026 at 6:00pm.

You can find out more about the PPG, including Minutes of our meetings and our current priorities, on the Practice website at: [www.swanagemedical.org.uk/pages/Patient-Participation-Group](http://www.swanagemedical.org.uk/pages/Patient-Participation-Group) – or just click on the PPG tab on the homepage.

If you are interested in joining the PPG, please contact Natasha Ritchie, the Practice Manager, or email the PPG directly at [ppgswanage@gmail.com](mailto:ppgswanage@gmail.com).

We would be particularly pleased to hear from anyone who would be interested in taking on the role of Secretary for the PPG.

**Dr Margaret Guy (Mrs Broadhurst)**  
**Chair, Swanage Medical Practice PPG**

---

**BRIDGE CLUB** Meets every Monday from 6-8PM in Old Harry's Bar. Experienced players and beginner's welcome.

**Virginia Lynch 01929 450177**



## Isle of Purbeck Golf Club

### Enjoy Summer at Isle of Purbeck Golf Club

The weather — good one day, bad the next — has certainly been fickle this year. Whatever it brings, though, it's hard not to appreciate the wonderful views from our clubhouse.

Summer is now in full swing, which means fewer events to report and plenty of golf being played. However, we do have some exciting news to share.

### Strike Zone - Golf Simulator Studio NOW OPEN!!

\*Play world-famous golf courses using state-of-the-art technology for playing all the best golf

\*Practice year-round, whatever the weather

\*Lots of practice options to hone your game

\*Detailed ball flight and performance analysis

\*Challenges, nearest the pin, longest drive etc...

\*Two realistic putting surfaces (10 and 12 stimp)

\*Comfortable social space for friends and groups

**Follow the link or scan the QR Code to set up an account and start playing!!**



<https://v2.hallmaster.co.uk/Scheduler?startDate=2026-05-31T00:00:00&roomId=33088&hallId=14622>

**Non-Members £35 per hour**

**IOP Members £24 per hour**



### July Golf Rates - Purbeck Course (18 holes)

\*Sat: £120 | Fri & Sun: £105 | Mon–Thurs: £95

\*Twilight (after 2pm): Mon–Thurs: £55 | Fri & Sun: £65 | Sat: £80

**Dene Course (9 holes)** — just £14 or £18 for two rounds!

There are lots of opportunities to learn: Beginner Lessons, Junior Golf Academy, Adult Academy, Ladies' Monday & Tuesday Classes and Lessons with the Pros- so don't miss out!!

### Daily Breakfast and Lunch in the Clubhouse

Breakfast is served from 8:00 - 11:30am daily and our Bar Menu is available from 11:30 - 4:00pm.

Come check it out! We look forward to seeing you. **Smart Casual dress code applies.**

Visit our website for more details or contact us to book.

**01929 450361 • [www.purbeckgolf.co.uk](http://www.purbeckgolf.co.uk) • [iop@purbeckgolf.co.uk](mailto:iop@purbeckgolf.co.uk)**



## Old Harry Bar

“July is dressed up and playing her tune...”  
at The Old Harry Bar this Summer.

Our team are waiting to greet Studland locals, visitors and holiday makers to our family friendly bar. Why not join us for a

pizza or a refreshing drink after a day at the beach?

Well-behaved dogs on leads are also welcome, with dog treats on the bar. We even have books, playing cards and board games available for you to use.

Maybe challenge your friends to a game of Pool on our full-sized table?

We serve a range of beers, ciders, wines, spirits, cocktails, soft drinks and of course, our delicious stone baked pizzas.

So, what are you waiting for? Get yourself down to check out Old Harry Bar!

### OPENING HOURS

MON, TUES, WEDS, THURS, FRIDAY & SATURDAY: 5pm – 11pm

SUNDAY: 3pm – 10pm

MONDAY – Bridge Club – Beginners Welcome - 6pm

THURSDAY – Craft Club – Bring your own crafty projects to work on from 5.30pm

SATURDAY NIGHT – MEMBERS DRAW – weekly at 9pm

(You must be a member and be there **in person** for a chance to win!)

### JULY EVENTS

#### **Watch the World Cup LIVE on our Big Screen!**

We will be showing all World Cup games that are on during opening hours, so come along, wave your flags and cheer for your team!

\*\*\*\*\*

#### **We serve tasty, freshly made Italian Stone baked Pizzas**

(Available to eat in or take away - Order on 01929 450561)

12" Margherita - £12 - (Tomato sauce and mozzarella cheese)

Plus, a wide selection of extra toppings to choose from at 50p each

See: Facebook, Instagram, our member's newsletter or visit:

[www.oldharrybar.co.uk](http://www.oldharrybar.co.uk)



## Studland Village Hall

We have recently installed “one-way” blinds. These will provide hall users with additional privacy if required whilst still allowing natural light into the hall. Thanks to Abna Churchill for his help with installation.

The next **ArtsReach** Event will feature Rachel McShane & The Cartographers and will take place on Saturday 18<sup>th</sup> July at 7:30pm.

Follow us on Facebook for the latest information about this and other events.



studlandparishcouncil.org

## Update from Studland Parish Council

Studland Parish Council met on June 15<sup>th</sup>. Some Councillors were away or ill, but had sent their apologies. Cllr Ben Wilson of Dorset Council, and Emma Wright of the National Trust, attended.

The Minutes of 18<sup>th</sup> May were confirmed.

Emma had submitted a report on behalf of the National Trust (NT):

\*Of significance to residents who have beach huts on South Beach, the NT will be writing to owners to inform them that the NT plan to remove the gabions in the Autumn of 2027. There will be a consultation process in the meantime.

\*The NT intend to partially reopen Middle Beach – about half the area.

\*SEEN will be conducting tree works in School Lane, Church Lane and at the Middle Beach overflow car park to remove dead trees resting on electric lines.

\*Various events will be taking place on / near the beaches in June and July. One councillor mentioned that there are a lot of events taking place, with organisers not properly clearing up after their events.

Cllr Ben Wilson also had submitted several reports:

\*He had been discussing with Dorset Council planners whether the new ANPR cameras proposed by the Ferry Company need planning permission. Dorset Council are saying no planning permission is required if cameras are installed on existing structures e.g. the toll booths. But if new structures are required – for example, closer to Knoll House Hotel – these may require planning permission.

\*SPC raised with Ben the concerns of residents in Studland about the conversion of existing “blue” paper tickets to the new ANPR system. SPC’s view is that the period of time given by the Ferry Company for the usage of these – 3 years from July 1<sup>st</sup> – is inadequate, and that there should no time limit on their expiry.

\*Ben reported on two local issues he is working on:

\*The proposed closure of St George’s School in Langton Matravers, and its merger with St Mary’s in Swanage. There are big concerns about the detrimental impact this would have on the village.

\*The proposed development of 25 houses in Harmans Cross by the Community Land Trust. There are considerable local “concerns” about this proposed development. Ben has written an article for the Purbeck Gazette about some of the issues / concerns.

The only planning application received (P/CLE/2026/02754) was from the owners of the Ferry Company relating to the use of the Ferry Company “offices” for residential purposes; the Ferry Company are requesting that some of the space be recognized as for residential use / accommodation. This is not an issue that SPC can take any position on. The relevant information comes from the nominated Planning Officer Simon Merritt who says: “if there is any evidence which demonstrates that the claimed use or development has existed, or not existed, continuously for a period of 4 or 10 years then the person who is able to provide the evidence should provide a written statement or what they can do, the case officer.”

On Highways, Dorset Highways will be conducting maintenance on the B3351 (filling the pot holes etc.) near the Water Park on the night of 29 / 30th June, and maybe also subsequent nights.

SPC are reporting to Highways a pothole that needs to be filled near the Beach Road bus stop.

No items of crime were reported.

The Chairman reported that 5 Councillors attended the presentation by Knoll House Hotel on their revised plans. Essentially the proposed development is being scaled back; there will be no C3 units. Instead, the development will be only for a hotel with 23 hotel bedrooms, and 44 apartments/family rooms. There will be a new restaurant and an on-site spa. The hotel is working with Dorset Council planners to gain their support, and hope to submit proposals for approval in October. As before the development will be considerably more “up market” than the current hotel, with Chewton Glen as a model / example of what they want to achieve i.e. 5star plus. Residents will be able to apply for spa membership. SPC remains concerned about the lack of car parking space and how staff will be able to get to work – as there will be no staff accommodation.

The clerk reported that DAPTC is updating its sites on Councillors “interests” i.e. to identify any areas of conflict of interest. He reported that our new website – to be launched soon – will provide the facility to run and process surveys.

Our Tree Officer, Chrissie Neville, reported that she will be meeting with the NT shortly to discuss the types of apple trees in the orchards in Studland, and proposals by SPC for pruning and better maintenance of these orchards from this Autumn. SPC will be working with the RHS’s national expert on apple trees and orchards – Gerry Edwards.

Our Rights of Way Officer Tim Yeandle raised residents’ concerns about the large hedge alongside “Love Lane”: the path from the Church to Rectory Lane. This is both very high and also now covering half the footpath. Tim will discuss this with the gardener who has cut this back in the past, and also with the owners.

Lyn Hool reported that the Community Speed Watch team have continued their work: in a one recent session 224 vehicles passed through, with 4 speeding – which will get caution letters from the Police. The fewer “speeders” perhaps shows that the message about keeping to the speed limit in Studland is getting through.

The Clerk presented a series of detailed reports which specified our Audit Report, our accounting statement, and also our Governance Statement. These are all essential local government reports to enable and show good practice. The reports will be available on our website and available for inspection. SPC thanked the Clerk for his diligence.

There were several other items on the agenda, but in the absence of several councillors, these were deferred to our next meeting.

Our next meeting will be on July 20<sup>th</sup>. Amongst other items, these issues will be discussed: update on the new SPC website, consultation on double yellow lines for Heath Green Road, grant application to improve the pond, our insurance, consultation on proposed 20mph speed limit, report back from the Annual Parish Meeting, and updates on Knoll House Hotel plans, and the ANPR scheme by the Ferry Company.

As always, more details are available on our website:

[www.studlandparishcouncil.org](http://www.studlandparishcouncil.org)

**Nick Boulter, Chairman**



## **ARTSREACH AT STUDLAND VILLAGE HALL**

**Saturday 18<sup>th</sup> July 2026 at 7.30pm**

Our next Artsreach show at the Village Hall features Rachael McShane & the Cartographers.

A renowned folk singer, cellist, fiddle and viola player from the North East of England, Rachael McShane gained fame as an original member of the award-winning folk band Bellowhead. A much sought-after performer and recording artist, her 2009 debut solo album, *No Man's Fool*, established impressive credentials that led her to signing with the prestigious Topic Records, the oldest independent record label in the world.



Rachael is also the leader of The Cartographers, a band that brings together the exceptional talents of guitarist Ian Stephenson (Kan, Baltic Crossing), and melodeon player Julian Sutton (Kathryn Tickell, Sting). Playing with expertise and sparkle, their music is a powerful blend of traditional folk and contemporary sounds, with Rachael's stunning voice and instrumental skills leading the line.

The Cartographers have built a loyal following thanks to their lively performances and critically acclaimed albums, combining stunning vocals and impressive instrumentals with innovative arrangements in a refreshing take on traditional folk.

*"You're in the presence of something very special...what a voice"* - BBC Music

*"Delivered with such rebellious verve and wit - they are a life-affirming joy"*- Songlines

Touring Dorset with Artsreach, the county's rural arts charity.

More info at [rachaelmcshane.co.uk](http://rachaelmcshane.co.uk) and [www.artsreach.org.uk](http://www.artsreach.org.uk)

As usual, there will be refreshments available and the Old Harry Bar will be open. Tickets Adults £14, under 18s £6, available online from [www.artsreach.co.uk](http://www.artsreach.co.uk) and in person from Studland Stores. Telephone bookings and enquiries 01929 450587. Tickets will also be available on the door unless we have sold out by then.



**A drive to raise £200,000 has been launched by Wareham's Men's Shed as it tries to secure its future by having its own community workshop.**

The Sheddens have been granted planning permission by Dorset Council to erect a

20m x 10m building in the grounds of Swanage and Wareham Rugby Club off Bestwall Road, Wareham. If they can raise enough money for the build, it will mean an end to the need to rent premises, which runs the risk of tenancy agreements being terminated. And it will ensure they can maintain the Shed's twin aims of providing a haven for lonely, disadvantaged or retired men while making a huge variety of items in wood for the wider community.

Chairman Harold Forbes said: *"The cost for a charity like ours is daunting. But it will be more than worth it if we can carry on serving Wareham and district as it has come to expect while continuing to provide a meeting place for men that has been shown to improve mental health and wellbeing. We would love to build the workshop ourselves and have many of the skills and tools needed. But the price of materials has skyrocketed and we also have to consider things we cannot do such as footings and core plumbing, so we'll have to pay for a job lot. Given our reputation in the area, we are quietly hoping that a benefactor or sponsor will step forward. But if that doesn't happen, we will be pursuing charitable grants and launching a crowdfunding appeal."*

In 2024 the Sheddens successfully fought off an eviction attempt by Care Dorset, which housed them at the Purbeck Connect centre in Sandford Lane, Wareham. They were saved by a public outcry. But fearing the writing was on the wall, they moved out a year later and are now in temporary accommodation at Lencutenbury Farm outside the town.

Mr Forbes, who was recently honoured with a Dorset High Sheriff's Award for outstanding service to the community, said: *"We also need a new home – and more room – as our membership is steadily increasing, not least because we are in the process of forming a new women's section. Let's hope we can make it all happen."*

The Shed's scheme has the support of Wareham Town Council. And Dorset's planning officer, referring to the overwhelming public backing for the application, stated: *"The comments confirm that the proposals would result in community benefits and support for members attending the facility."*

The Sheddens have recorded their own song, 'Here for You', to showcase the group. You can find it at [youtu.be/TPhdPDAIQRE](https://youtu.be/TPhdPDAIQRE)

If you can help, contact [warehamshed@gmail.com](mailto:warehamshed@gmail.com)

(Picture: Wareham's Sheddens with a children's climbing wall made for Stoborough Primary School)

## DISCOVER No.4 - EXPLORING CHURCHES AND CATHEDRALS

Stepping into a cathedral or old church can feel like entering another world: people often experience a sense of 'otherness'; of escape from the busyness of modern life. They can be an oasis, offering a place of refuge and calm and even somewhere to begin exploring your own spirituality and to discover God for yourself.

Many churches and cathedrals are treasure houses of art and architecture dating back centuries. The oldest churches in the UK still in regular use were built about a thousand years ago so they feel timeless and connect us to past generations. Many church buildings, including those used by Roman Catholics, Baptists, Methodists, the Church of England and other denominations are of great architectural and historical importance. In fact, of the more than 16,000 Church of England churches, more than 75% are listed for their historical significance.

***'The sense of beauty and being inside history always affects me very deeply'***  
**Visitor to Canterbury Cathedral**

But churches and cathedrals are not museums – they are full of life. They are places where Christians gather to pray to God, to worship him through hymns and songs, and to meet each other. They are also deeply rooted in their communities as places of celebration, remembrance, and mourning. Over the centuries, they have also been places of refuge for people fleeing persecution.

In the New Testament part of the Bible, there are many references to the Church but here the meaning is different. When Jesus Christ and his followers talked about 'the Church', they were referring to the people who had become Christians, not any building in which they met. And although churches might have a special feeling about them, the Bible teaches that God does not only live in church. He can be found anywhere.

Various denominations among Christians meet in different types of buildings. They also organise themselves in different ways, locally, regionally and nationally, even internationally. For instance, the Church of England is divided into 43 areas called dioceses. Each is led by a bishop and has a cathedral as its main church. Each diocese is made up of parishes.

***'Lighting a candle always seems appropriate in a cathedral... I think it feels like your prayer is connecting not only with God but with praise and holiness that has been offered in the place over hundreds of years.'***

Cathedral visitor

***'We feel drawn to the chapels where people are invited to pray quietly. We find that very comforting in a world which is busy and noisy most of the time.'***

Cathedral visitor

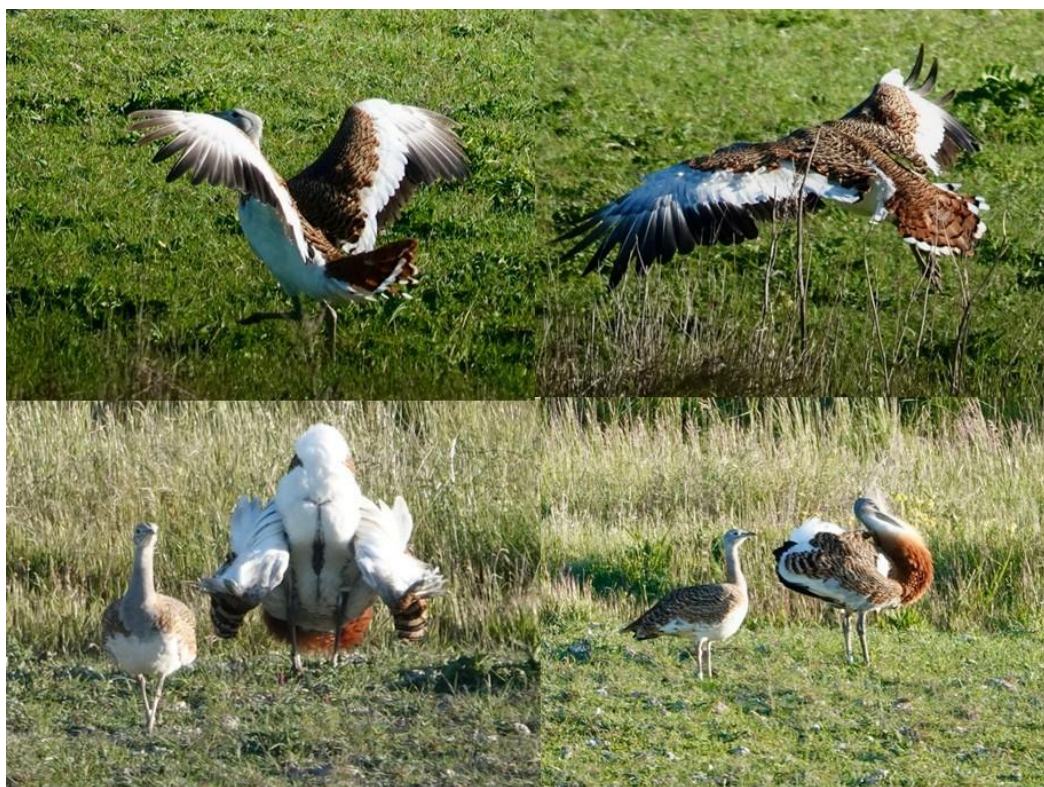
(Shared with permission. Further resources from: <https://explorechristianity.info/>.)

Acknowledgments: Allchurches Trust [now Benefact Trust], Jerusalem Trust, Kirby Laing Foundation, The Diocese of London)

## 'The Great Bustard'

After receiving comments and interest about the Great Bustard pictured in flight in a field on Manor Farm in the April edition, Mike Cheeseman has kindly provided some more pictures from Salisbury Plain and some facts for us:

Used to be widespread in the UK but hunted to extinction in 1832 / Re-established in the UK by a group of nature enthusiasts in 2004 - it took until 2013 for a small population was started by importing eggs from Spain / It has taken until 2026 to slowly build a sustained population of around 60 birds on Salisbury Plain / Is the heaviest flying bird in the world with males regularly reaching 18kg (40lb) and a verified record of 21kg / The males have a wingspan of between 2.1 & 2.7m & females between 1.7 & 1.9m / They can fly at up to 50mph and run at up to 30mph / The males perform a courtship display to attract females.



Further information is available from  
<https://greatbustard.org>

## 'Studland Kestrels'



This year there were 5 chicks that had all fledged by the 19<sup>th</sup> June.

Top Left: First of 5 to fledge (16<sup>th</sup> June). Suspect it was the last chick to be born and was probably squeezed out of the nesting box.

Top Right: Four remaining chicks (16<sup>th</sup> June): These are more mature but still not confident to fledge.

Middle Left: Second to fledge (17<sup>th</sup> & 18<sup>th</sup> June): All 4 fledged on the same day. This was the first of them.

Middle Right: Last of the 5 still in the nesting box (18<sup>th</sup> June): Testing its wings before fledging later that day.

Bottom: Sheltering from predators in various locations (19<sup>th</sup> June)

**Mike Cheeseman**



## Linda's Story

Linda Jacskon wrote this charming account of her life, as a daughter of a farm worker raised in Studland in the mid 1920's/30's for her grand-daughter. As editor, I have been asked to share her memories here for readers...

### Continuation...

A phone call from the Red Cross came one afternoon as I was milking the cows to say Ron was wounded and was in hospital in Portsmouth and he wanted to see me. I said I would come straight away, told my boss where I was going and went to my lodgings to change and pack a small bag. I took a taxi to Shaftesbury and got a train to Portsmouth. The train stopped many times and when I got to Sway it stopped altogether and a guard came through and said they were going no further as Southampton was being bombed. I did not know what to do and asked the guard if he would lock me in the train or the waiting room, but he refused. Luckily, I remembered the house I had lodged in when making munitions in Southampton, so I started walking along the road through the common. I was very frightened so walked close behind a courting couple. At the top of the road was a police hut where a policeman was always on duty day and night. He came down to meet me and walked me down the lane and threw gravel at the bedroom window. Mr. Erlicht came down, let me in, and I stayed on their settee all night.

The next day I got to Portsmouth where a very nice Red Cross lady met me and took me to the hospital. Ron was bandaged all over his head down to his nose with a small space where his lips were. I was able to feed him his elevenses, dinner and then at five o'clock the Red Cross lady came. She was off duty and asked would I like to go with her to a house where I could stay the night? Which I did. Mr. and Mrs. Lloyd were kindness itself. I had a three-inch bath and a roast dinner. I had no food coupons to give them but offered money which they would not accept and they drove me to the station to catch a train back to Ashmore.

I spent two years at Ashmore when Mr. Warner asked me to work on his farm in Studland. This was much better as I lived at home and the cows were milked by electric milking machines. I used to race a gallon of milk around to the dairy in a churn and wait for someone to tip it into the tank at the top and it would then run down the side to be cooled by the cold water running down the back. Then I could bottle the milk, sealing them with cardboard tops. Before working in the dairy, I worked on the farm picking frozen sprouts. Having picked our quota of sprouts, Fred Bert and Fred played cards in the old Shepherd's Hub. While I had to stand and watch in case anyone was coming. I did the milk round with Fred Guppy; he was such a nice man. My father, at harvest time when we were threshing the corn, put me on the chaff hole to keep it clear. It was a horrible job. I had chaff in my hair, ears, neck and shoes.

**To be continued...**

## **World Cup: Canon Paul Hardingham considers football**

Many across the world are united in watching the World Cup in the United States, Mexico and Canada. However, football is more than just a game; it can illustrate some key points about the Christian life. As Paul writes: *'But one thing I do: forgetting what is behind and straining towards what is ahead, I press on towards the goal to win the prize for which God has called me heavenwards in Christ Jesus.'* (Philippians 3:13b,14).

**A prize to be won:** The dream of every player in the competition is to be able to hold up the World Cup themselves. Christians grasp to the prize of eternal life, God's gift to us of relationship with Jesus for now and eternity. However, there's an important difference between football and the Christian faith. To win the World Cup you have to be good enough, while Christ's love for us is underserved and not dependent on how well we've done.

**Training to be undertaken:** If a team is going to win the World Cup, training is vital! Our training, as Christians, starts the moment we accept the gift of God's life. On a daily basis, we train ourselves to say no to the wrong things in our lives. As we build up our godly muscles, we are better able to choose to do what is right in God's eyes. To enable us to do all this we need to engage in the spiritual disciplines of prayer, studying the Bible and being part of a church and small group. How is your training going?

---

## **15<sup>th</sup> July - St Swithun (or Swithin) - saint for a rainy day**

St Swithun is apparently the saint you can blame for rainy summers. It is said that if it rains on his special day, 15<sup>th</sup> July, it will then rain for 40 days after that. It all began when Swithun was made Bishop of Winchester in 852 by King Ethelwulf of Wessex. It was an important posting: Winchester was the capital of Wessex, and during the 10 years Swithun was there, Wessex became the most important kingdom of England. During his life Swithun seems to have done a lot of good, famous for his charitable gifts and for his energy in getting churches built. When he was dying in 862, he asked that he be buried in the cemetery of the Old Minster, just outside the west door. If he had been left there in peace, who knows how many rainy summers the English may have been spared over the last 1000 years. But, no, it was decided to move Swithun. By now, the 960s, Winchester had become the first monastic cathedral chapter in England, and the newly installed monks wanted Swithun in the cathedral with them. So finally, on 15<sup>th</sup> July 971, his bones were dug up and Swithun was translated into the cathedral. That same day many people claimed to have had miraculous cures. Certainly, everyone got wet, for the heavens opened. The unusually heavy rain that day, and on the days following, was attributed to the power of St Swithun. Swithun was moved again in 1093, into the new Winchester cathedral. His shrine was a popular place of pilgrimage throughout the Middle Ages. The shrine was destroyed during the Reformation and restored in 1962. There are 58 ancient dedications to Swithun in England.

## Monthly Awareness

### Good Care Month July 2026

Good Care Month is an annual awareness campaign held in July that celebrates the dedicated people working across the social care sector. The initiative highlights the vital contributions of carers – both paid and unpaid – who provide support to vulnerable individuals across communities. More than just recognition, Good Care Month also aims to raise the profile of care as a rewarding and essential career path, particularly at a time when recruitment and retention in the sector are national priorities. The initiative began in Hertfordshire, UK, and has since grown to become a broader national campaign celebrating the people who make a difference in care every day. The event is spearheaded by adult social care organisations, local authorities, and care providers, with the goal of improving public awareness and appreciation of care workers and promoting careers in care. The campaign also serves to challenge stereotypes about care roles and shows the diverse opportunities and skills involved in the sector. From home care assistants and residential carers to managers, cooks, drivers, and volunteers, Good Care Month highlights every role that contributes to high-quality, person-centred care.

**Why Good Care Month Matters:** Good Care Month shines a spotlight on the often-under-recognised workforce that supports some of the most vulnerable members of society. As populations age and care demands increase, there is an urgent need to recruit and retain passionate, skilled individuals within adult social care. The campaign not only helps to foster respect and gratitude for those already in the sector but also plays a vital role in changing perceptions and encouraging the next generation to pursue careers in care. It sends a powerful message: that providing care is not just a job, but a meaningful and valuable vocation.

**How to Celebrate Good Care Month:** There are many creative and meaningful ways to take part in Good Care Month. Whether you're a care provider, a service user, or a member of the public, your involvement can help raise awareness and support the care community.

#### Show appreciation:

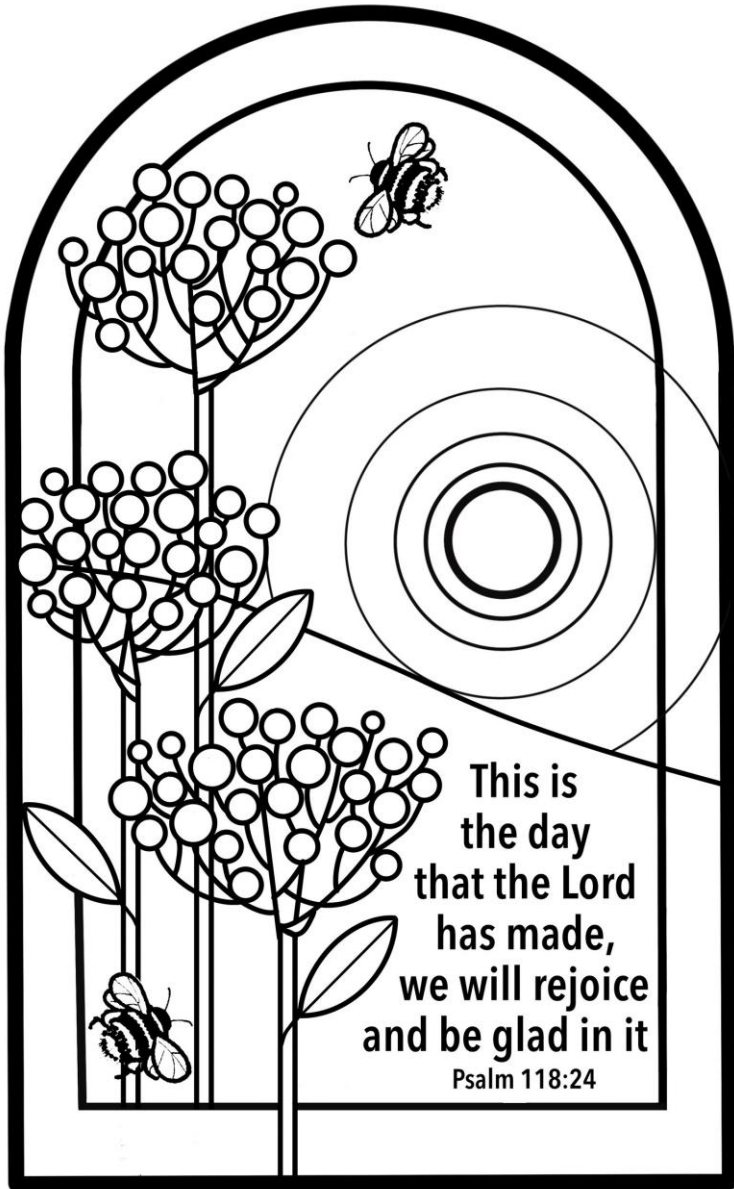
Write thank-you cards, share social media shout-outs, or create posters recognising outstanding carers in your community. Pick the nearest social care facility near you. A care package of pastries, little cakes, or biscuits to go with their tea can be a pleasant pick-me-up and will fuel them until their next big meal. Publish testimonials to highlight their work, journeys, and the impact they have on people's lives.

Even small gestures can go a long way in boosting morale and visibility for the care sector.

**Colouring in – for the children and the adults...**

**Colouring benefit No.7 - Emotional Expression & Processing:**

A symbolic, non-verbal way to cope with and process feelings.





# Cook & Connect

SWANAGE & PURBECK

*Fun, friendly and free*

Perfect for beginners and improvers!




-  Learn new skills
-  Be inspired with new recipes
-  Try cheap, simple, tasty new dishes
-  Meet others

Everything is provided!

£3 donation for ingredients welcomed

 At URC, High Street, Swanage BH19 2NY

 on **Thursdays** (term time)  
Arrive from 9.30 for a cuppa  
**Cooking 10am-12pm**



Book your **FREE** place now  
[www.thefriendlyfoodclub.org/purbeck](http://www.thefriendlyfoodclub.org/purbeck)  
or call 01202 057100

# THE FRIENDLY FOOD CLUB

With thanks to





# PURELY LIVING

NEW HOMES | LAND | PRESTIGE PROPERTY

## Selling with Confidence

Swanage £2,00,000



Studland £2,995,000



Swanage £450,000



Langton Matravers  
£525,000



At Purely Living, we are specialists in prestige property, land and new homes in prime locations along the South Coast – offering expert advice, accurate and realistic appraisals for private sellers and developers, and highly targeted, innovative marketing strategies designed to achieve the very best value.

### Thinking of Selling?

We offer confidential, no obligation valuations

Call 01929 660000

Email [hello@purely-living.com](mailto:hello@purely-living.com)



Scan here to see all properties



# Corbens

The Property Professionals



Thinking of Selling, Buying or need professional advice?  
We would welcome your call.

*The best measure of success is  
what our customers say.*



Our role is to provide expert advice and guidance in marketing. We are multi-award winning estate agents specialising in the sale of properties in the Isle of Purbeck with an experienced team of qualified professionals with in excess of 100 years experience. We will guide you through the whole process to find you the right buyer at the best price, with a timeline that suits you. For free advice without obligation please get in touch.



## Corbens Estate Agents



property@corbens.co.uk



01929 422284





Wedding flowers  
And funeral tributes

*'Flowers made with sincerity and from home'*

07966 462974  
[c.f.m.finch@btinternet.com](mailto:c.f.m.finch@btinternet.com)  
[budsofmave.com](http://budsofmave.com)



# Littlebirds

## Home and Holiday Services Ltd.



- Cleaning of Domestic, Holiday Let and Second Home Properties
- Commercial Office Cleans
- Laundry Services
- Insurance Property Checks
- Eco Friendly Ethos and Products

For a quotation or for further information please call or email

07568715856 | [info@littlebirdscleaning.co.uk](mailto:info@littlebirdscleaning.co.uk)

## DOUCH FAMILY BEREAVEMENT GROUP

**Cindy Weller**

Accredited Counsellor, MBACP MNCS

## Swanage

Taking place in the Rectory Classroom at the rear  
of St Mary's Parish Church on the first Monday of  
each month from 11am - 12.30pm.

PLEASE CALL TO BOOK YOUR PLACE.  
OPEN TO THE WHOLE COMMUNITY.



## JAMES SMITH FUNERAL DIRECTORS

01929 422445  
[JAMESSMITHFUNERALS.CO.UK](http://JAMESSMITHFUNERALS.CO.UK)

# Isle of Purbeck Golf Club and Restaurant

Open to the Public - Everyone Welcome - Smart Casual Dress

## Breakfast

Everyday  
8:15-11:30

## Lunch

Everyday  
11:30-4:00

## Friday & Saturday

**Dinners**  
6:00-9:00

## Sunday Lunch

Sunday  
12-2:30



**Come See Our Beautiful Views**

[www.purbeckgolf.co.uk](http://www.purbeckgolf.co.uk)

01929 450361

[iop@purbeckgolf.co.uk](mailto:iop@purbeckgolf.co.uk)

BH19 3AB

## JT Tree & Hedge Work

- Tree felling
- Pruning/reductions
- Crown lifting & thinning
- Dead wooding
- Hedge cutting & maintenance

*Fully qualified & insured*

Contact James Tillyard

T: 01929 450 012

M: 07950 763 694

E-mail:

[jt@treeandhedgework.com](mailto:jt@treeandhedgework.com)

## J B, C & R HARWOOD

Trading as C. Gardner & Son

### SOLID FUEL & LOG MERCHANT

The Coal Depot – Station Road  
Corfe Castle, BH20 5EJ

Tel No: 01929 450246

or

01202 747892

[www.cgardnerandson.co.uk](http://www.cgardnerandson.co.uk)



**Oil fired and  
gas appliance  
care.**

**Please call**

**07443 742511**

**Venturi  
Heating**  
Stoborough



## WPM Residential Lettings

A Personal Service to Landlord and Tenant

Do you have a **property to let** or  
are you looking for a **property to rent**,  
in Swanage and The Isle of Purbeck?

**Tel: 01929 426200**

**15c Commercial Road, Swanage,  
Dorset BH19 1DF**

[www.wpmlettings.co.uk](http://www.wpmlettings.co.uk)

[wpmlettings@gmail.com](mailto:wpmlettings@gmail.com)

# **W F SNOOK AND SON LTD**

Installers of

**PVC-U AND ALUMINIUM**

**WINDOWS – DOORS – PATIO DOORS  
BIFOLDING DOORS**

**CONSERVATORIES – GARAGE DOORS  
GUTTERING**

**‘KESTREL’ PVC – U FASCIA – SOFFIT**

**MOULDINGS etc**

**Tel/fax 01929 481581**

**[enquiries@wfsnookandsonltd.co.uk](mailto:enquiries@wfsnookandsonltd.co.uk)**

**10 YEAR INSURANCE BACKED GUARANTEE**

**FENSA 13202**



## **STUDLAND STORES AND B&B**

**ALL YOU NEED!**

Stores open from 8am seven days a week

- Two ensuite double B&B rooms
- Fresh bread, local meats, fruit & veg
  - Beach goods, camping items
    - Gifts, cards and plants
  - Local beer, wine & cider
    - Ice and ice-cream
  - New stock every week!

**MAY CONTAIN NUTS**

Call 01929 450204 or email  
[jxparsons@outlook.com](mailto:jxparsons@outlook.com) to place an order



# A.R.HARRIS & SON

## ELECTRICAL CONTRACTORS



Fully Qualified Electricians, for all your electrical needs.

*Rewire's, extra sockets, security lighting, storage heating, ventilation, inspection & testing, portable appliance testing, smoke detectors.*

Phone **01929 424518** Fax. **01929 427519**  
 24hr Emergency Callout Service **07976 848880**

### STUDLAND W. I.

COME AND JOIN US  
 AT STUDLAND VILLAGE HALL

We meet on the second Wednesday  
 of the month at 7.30 p.m.



Make new friends and meet  
 old friends.

*A full and interesting  
 Programme, plus much  
 more.*



National  
 Trust

### Studland Beach

Car parks, Café & Shop open year round

Volunteering opportunities & regular  
 events

[studlandbay@nationaltrust.org.uk](mailto:studlandbay@nationaltrust.org.uk)

[nationaltrust.org.uk/studland-bay](http://nationaltrust.org.uk/studland-bay)

**01929 450500**

**Sparkling Windows**  
 and **Carpets Too**

**Professional Carpet &  
 Window Cleaning**

15 HILLSEA RD  
 SWANAGE BH19 2QL

Telephone 426346 or 07919 277 568



### Studland Village Hall

IDEAL FOR:

Meetings Weddings Parties  
 Clubs Classes Functions

More information, availability &  
 online booking at  
[www.studlandvillagehall.co.uk](http://www.studlandvillagehall.co.uk)  
 or phone 07597 259890



## DORSET FOOT CLINIC

Home visits and clinic appointments

- Nail Cutting
- Athlete's Foot
- Corns
- Calluses
- Fungal Nail
- Cracked Heels
- Hard Skin Removal
- Ingrowing Nails
- Thickened Nails
- Verrucas

Tel: 01929 42 69 44 / 01202 910 920

Email: [office@dorsetfootclinic.co.uk](mailto:office@dorsetfootclinic.co.uk)

Web: [www.dorsetfootclinic.co.uk](http://www.dorsetfootclinic.co.uk)

Awarded

# BEST AGENT

in Swanage & Wareham  
Four Years Running



To find out  
why, contact  
**John Beauchamp,**  
Head of Sales,  
DOMVS Swanage:

07711 715352  
swanage@domvs.co.uk

[domvs.co.uk](http://domvs.co.uk)



DOMVS

lendology.cic



*Lending with Heart and Mind*

Dorset Council fund a not-for-profit loan scheme for homeowners and landlords\*.

We understand the expense of maintaining your home and we work with you to take the stress out of funding repairs, improvements or adaptations.

We see you as an individual, not a credit score. Our knowledgeable team of advisers will guide you through the process of applying for a home improvement loan.

For a no-obligation assessment or more information visit [www.lendology.org.uk](http://www.lendology.org.uk) or call 01823 461099

Heatherton Park Studios, Bradford on Tone, Taunton, TA4 1EU

\*subject to eligibility

## Painting and Decorating

**Wanting a new look?**

Lady decorator 25 years experience

No job too small, free quotes given

Locally based, small maintenance jobs

Call Sue at Island Locations

[islandlocations2015@gmail.com](mailto:islandlocations2015@gmail.com)

**07884 585984**



**UNLOCK THE TRUE VALUE OF  
YOUR LAND!**



**LANDBROKER**

As a discreet and confidential Landbroker, I specialise in helping property owners to sell land and buildings with development potential. With or without planning. I offer a private, stress-free process, leveraging my exclusive network of developers and construction companies to ensure your property gets the attention it deserves. Confidential guidance from opportunity to sale.

01481 832672  
[info@landbrokeruk.com](mailto:info@landbrokeruk.com)



- We offer domestic and commercial services
- We ensure every job is carried out professionally with precision, care and respect to your land and the environment.
- We cover all aspects of tree services including: pruning, felling, hedge cutting, storm debris removal, emergency call outs, drone rescue etc.
- Rempstone Tree Management operators are fully qualified and insured.

Please contact us on (01929) 480272 Jack, mobile 07398 263490

email [info@rempstonetreemanagement.co.uk](mailto:info@rempstonetreemanagement.co.uk)      [www.rempstonetreemanagement.co.uk](http://www.rempstonetreemanagement.co.uk)



**Andy Lowe Tech Support**

No Job too small. Give me a call

Over 30 years experience

**01929 422597**

**07593044274**

[AndyLoweTechSup0rt@gmail.com](mailto:AndyLoweTechSup0rt@gmail.com)

## FRELON PEST CONTROL

Residential and commercial

One off or contract

Swanage based covering Dorset

Rats, mice, wasps, hornets

Fully insured and qualified

TELEPHONE 07459 523096

EMAIL [frelonpestcontrol@gmail.com](mailto:frelonpestcontrol@gmail.com)



**ONDA  
VALETING**

mobile vehicle valeting-deep cleans -full  
valets -maintenance cleans -polishing -  
-pre sale preparation

**Tel 07467789066**

[ondavaleting@gmail.com](mailto:ondavaleting@gmail.com)

## Quotes for July

*July is a time for visiting beautiful country churches, and reflecting that....*

*'Holy people have a sense of inner peace. In their presence, it is the God of the still, small voice that one perceives'. - T Harrison*

*'The name of Jesus is not so much written as ploughed into the history of the world.' - Ralph Waldo Emerson.*

*'Prayer is the rope up in the belfry; we pull it, and it rings the bell up in heaven.' - C Evans*

*'I can take my telescope and look millions of miles into space; but I can go away to my room and in prayer get nearer to God and heaven than I can when assisted by all the telescopes of earth.' - Isaac Newton*

*'Christians are the only people in the world who have anything to be happy about.' - Billy Graham*

*'Plenty of people wish to become devout, but no one wishes to be humble.' - Francoise, Duc de la Rochefoucauld*

*'The tyrant dies and his rule is over, the martyr dies and his rule begins.' - Soren Kierkegaard*

*'Forbidden fruit creates many jams.' – Anon*

*'Christians, keep the faith - but not from others!' – Anon*

*'God is a little like American Express - don't leave home without Him.' - Anon*

*'Let us make God the beginning and end of our love, for He is the fountain from which all good things flow and into Him alone they flow back. Let Him therefore be the beginning of our love.' - Richard Rolle*

*'Seek in reading and thou shalt find in meditation; knock in prayer and it shall be opened to thee in contemplation.' - St John of the Cross*

*'If we are intended for great ends, we are called to great hazards.' - John Henry, Cardinal Newman*