



# ARMITAGE with HANDSACRE



VILLAGE DAY  
Saturday 20th June 2026



**A Fun day out for everyone- Free to attend!**



**Entertainment, competitions, shopping and more! 11am – 4pm**

**Fun Dog Show & Agility 🐾 Sports, Games & Activities, 🦆 Duck Race**

**🏆 Competitions for Best Scarecrow – Best Cakes – Best Stall**

**🎸 Live Music ✈️ Picnic & Play areas 🏪 Market Stalls**

**🍦 Food Stalls & Bar 🍴 Canalside Floating Market 🚤**

**Raffle 1<sup>st</sup> prize £100 & many more great prizes...**

**Venue: The Village Hall & Field, Shropshire Brook Road, Armitage.**

**Proudly sponsored and supported by**



Armitage with Handsacre  
Parish Council



For more details on Sponsorship, Stallholders, Programme or Volunteering contact;

<https://www.facebook.com/groups/17727793098412/> 07716 190051

<https://awhvillagehall.org.uk/village-day/> [awhvillagehall@outlook.com](mailto:awhvillagehall@outlook.com)



# Our Rector writes

As May unfolds before us, it brings with it a gentle invitation - one we often resist in the busyness of our lives. With two bank holidays and the half-term break for schools, this month offers pockets of time that are easily filled!

In the opening chapters of Genesis, we read that after the great work of creation, God rested on the seventh day. Not because He was weary, but because rest itself is holy. It is woven into the rhythm of life as something necessary, life-giving, and good.

Yet many of us find rest surprisingly difficult. We are used to being busy, to measuring our days by what we achieve, to filling silence with noise. Even holidays can become crowded with plans and expectations. Stillness can feel unfamiliar, even uncomfortable.

May offers us a quiet opportunity to rediscover rest - not simply as stopping, but as being. To sit in the garden and notice the warmth of the sun. To take a slower walk and pay attention to the beauty around us. To share unhurried time with family and friends. To pause in prayer without rushing on to the next task.

Rest is not an absence of purpose; it is a return to it. When we allow ourselves to be still, we remember that we are not defined by our productivity, but by our identity as people loved by God.

This month, I encourage you to embrace moments of rest, however small they may seem. Let the bank holidays and half-term be more than just breaks in routine - let them be spaces where your soul can breathe.

*"Be still, and know that I am God."* In that stillness, may we find not only rest, but renewal.

With every blessing,

*Rev'd Cath Leighton*  
Team Rector.

Team Vicar - Rev'd Cath Leighton telephone 07903 164242 email: [cmaleighton@icloud.com](mailto:cmaleighton@icloud.com)  
Churchwarden - Chris Rogers telephone: 07552 215087 email: [chris1431@aol.com](mailto:chris1431@aol.com)  
Editor & Churchwarden - Danny Briggs telephone: 01543 490114 email: [dannybriggs905@gmail.com](mailto:dannybriggs905@gmail.com)  
The Village Herald advertising - Barry Liddle telephone: 07922 529801 email: [liddledarlo@gmail.com](mailto:liddledarlo@gmail.com)  
Parish Church website: [www.achurchnearyou.com/armitage-st-john-the-baptist](http://www.achurchnearyou.com/armitage-st-john-the-baptist)  
Village website: [www.armitagewithhandsacre.co.uk](http://www.armitagewithhandsacre.co.uk)

## The Church Room

St John the Baptist church building is open daily but if you require access to the church room please let Chris Rogers know on 07552 215087.

# The Village Herald

## Your Church & Community Magazine

### May 2026

Sunday 3rd May	Fifth Sunday of Easter 10.30am Holy Communion
Sunday 10th May	Sixth Sunday of Easter 10.30am Morning Worship
Wednesday 13th May	5pm Prayer and Praise
Sunday 17th May	Seventh Sunday of Easter, The Sunday after Ascension 10.30am Holy Communion
Sunday 24th May	Pentecost 10.30am Morning Worship
Sunday 31st May	Trinity Sunday 10.30 Holy Communion

**Church building open daily  
from 9am until 6pm.**

**Thank you for your support.**

### Village Day, June 20th

**Come and visit the Village Herald's stand and try your luck on our Buzz Off Game (free sweets for all winners).**

**Don't forget to bring your Angel (see page six, there will be a special table on the village hall car park). We have some super prizes.**

**Get the latest news on all the new initiatives and the benefits of joining our Angel programme. See our latest low cost advertising plans.**

**The Village Herald - bringing the community closer to your church and bringing the church closer to our community.**

### **Recent Baptisms, Weddings & Funerals at St John the Baptist**

10th April	Funeral of David John Goodhall of Rishworth Avenue, Rugeley
17th April	Funeral of Stefan Mark Preston of Proctors Road
19th April	Baptism of Toby Chambers of Dawes Close

# The tale of the Mustard Seed & the tale of the Yeast

JESUS OFTEN TOLD STORIES WITH HIDDEN MEANINGS



SOME OF HIS STORIES WERE VERY SHORT, BUT THEY MEANT A GREAT DEAL

ONCE JESUS EXPLAINED HOW THE KINGDOM OF HEAVEN WAS LIKE A MUSTARD SEED

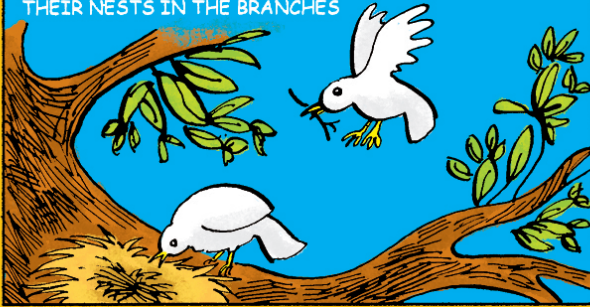


IT IS ONE OF THE SMALLEST OF SEEDS....



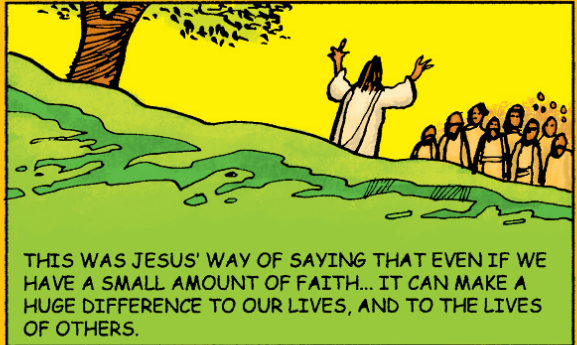
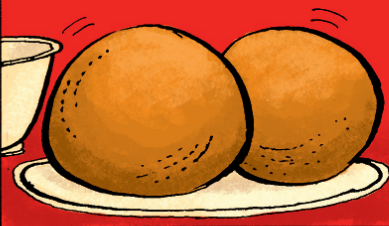
BUT WHEN IT GROWS UP IT IS THE BIGGEST OF ALL PLANTS

IT BECOMES A TREE, SO THAT BIRDS COME AND MAKE THEIR NESTS IN THE BRANCHES

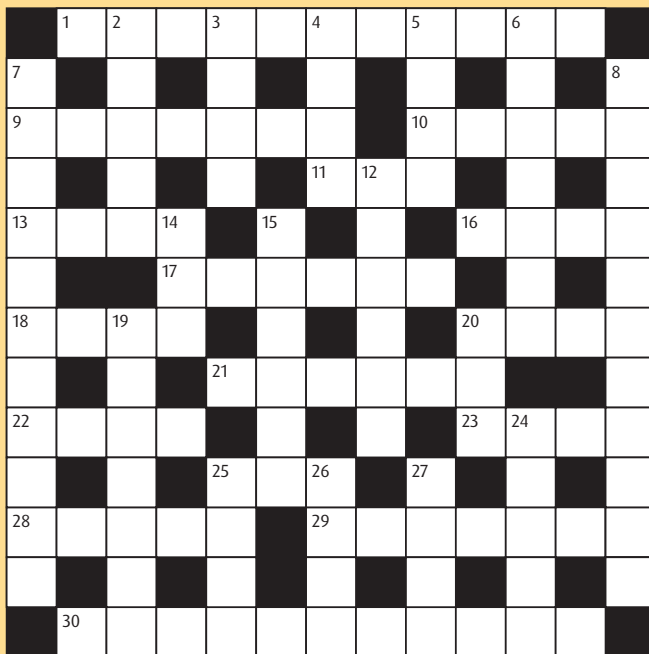


JESUS ALSO EXPLAINED THAT THE KINGDOM OF HEAVEN IS LIKE YEAST.

EVEN THOUGH IT'S A TINY INGREDIENT, WHEN IT'S MIXED WITH THE FLOUR, THE WHOLE BATCH OF DOUGH RISES



THIS WAS JESUS' WAY OF SAYING THAT EVEN IF WE HAVE A SMALL AMOUNT OF FAITH... IT CAN MAKE A HUGE DIFFERENCE TO OUR LIVES, AND TO THE LIVES OF OTHERS.



## Across

- 1 Overpowered (*Deuteronomy 11:4*) (11)
- 9 'The - are mantled with corn' (*Psalms 65:13*) (7)
- 10 'Each man—a sword to his side' (*Exodus 32:27*) (5)
- 11 On the death of Jesus the curtain in the temple was torn from - to bottom (*Matthew 27:51*) (3)
- 13 Stagger (*Isaiah 28:7*) (4)
- 16 'Anyone, then, who knows the good he ought— - and doesn't do it, sins' (*James 4:17*) (2,2)
- 17 Stir up or provoke (*Acts 13:50*) (6)
- 18 Burden (*Luke 11:46*) (4)
- 20 'As far as the east is from the -, so far has he removed our transgressions from us' (*Psalms 103:12*) (4)
- 21 Sign (*Luke 23:38*) (6)
- 22 'After that, Jesus poured water into a basin and began to - his disciples' feet' (*John 13:5*) (4)
- 23 The nature of the seven ears of corn which swallowed up the good ears in Pharaoh's dream (*Genesis 41:23*) (4)
- 25 Has (*anag.*) (3)
- 28 'This is the account of Shem, Ham and Japheth, - sons' (*Genesis 10:1*) (5)
- 29 'I will...make them drunk, so that they...sleep for - and - awake' (*Jeremiah 51:39*) (4,3)
- 30 Paul said of him, 'he often refreshes me and is not ashamed of my chains' (*2 Timothy 1:16*) (11)

## Down

- 2 Worth (*Matthew 13:46*) (5)
- 3 'A bruised - He will not break' (*Matthew 12:20*) (4)
- 4 'Suddenly a great company of the heavenly - appeared with the angel' (*Luke 2:13*) (4)
- 5 Slip (*anag.*) (4)
- 6 'Take an awl and push it through his - - into the door, and he will become your servant for life' (*Deuteronomy 15:17*) (3,4)
- 7 Bountiful (*2 Corinthians 8:2*) (11)
- 8 'Therefore, as we have -, let us do good to all people' (*Galatians 6:10*) (11)
- 12 Acquire (*2 Timothy 2:10*) (6)
- 14 Container cover (*Numbers 19:15*) (3)
- 15 'He...became obedient to death, even death on - -!' (*Philippians 2:8*) (1,5)
- 19 Refrain (*1 Peter 2:11*) (7)
- 20 'She began to - his feet with her tears' (*Luke 7:38*) (3)
- 24 One who worships Brahma, Vishnu or Shiva (5)
- 25 'Give to everyone who - you' (*Luke 6:30*) (4)
- 26 'I lift up my eyes to the hills; where does my - come from?' (*Psalms 121:1*) (4)
- 27 One of those whom the Lord said would be taken from Jerusalem and Judah as judgment on them (*Isaiah 3:2*) (4)



# Handsacre Methodist Church

MAY 2026

We meet for worship each Sunday morning from 9.30 to 10.30.

## The Vine Café and Community Space

The Vine Café and Community Space at Handsacre Methodist Church is open from 9.30am to 4.30pm Monday to Friday. We serve a wide range of coffees, teas, and hot chocolate, as well as homemade cakes, other sweet treats, toasted tea cakes, omelettes, beans on toast, jam on toast and toasties. There is no set charge, but donations can be made. Afternoon teas are bookable on request.

You are welcome to stay as long as you like - we have books, magazines, colouring, board games and jigsaws for you to enjoy.

## We also have:

**Chapel Lambs**, a family play group, Mondays from 9.30am till 12pm.

**The Hangout**, a group for children in school years six to eight with food, chat, games and craft, Mondays 3.30pm to 5pm.

**Games Night**, usually first Monday evening of the month from 7.30pm. A great opportunity to try a wide range of board and card games and make new friends. .

**Craft & Chat**, Thursdays. Drop in between 1.30pm and 4pm.

Please see our website: [handsacremethodist.org.uk](http://handsacremethodist.org.uk) or our Facebook page at The Vine Cafe and Community Space. Do like and follow for all the latest information.

# Build Your Own Angel Competition

## Village Day - Village Hall

Create your own angel using any materials - wood, fabric, recycled materials, paper, clay or anything you can imagine.

Competition Organiser: St John the Baptist Church, Armitage

## Who can enter

Open to everyone - individuals, families, schools and community groups.

## Age Categories

- Under 12, ● 12-18, ● Over 18

## How to Enter

Bring your angel to **Village Day at the Village Hall**. Entries must be delivered by 10am on **Saturday 20th June** for display and judging.

## Judging Criteria

Creativity	Original and imaginative design
Craftsmanship	Care, effort and skill
Presentation	Overall appearance
Use of Materials	Creative use of materials
Angel Theme	Clearly represents an angel

## Competition Rules

- All angels must be handmade
- Angels should be no more than **six feet in height**
- Entries must be safe and stable for display
- Include creator's name and age (or group name)
- Judges' decision is final

**A prize will be presented to the best Angel in each of the three groups**



**MEETING POINT** is a community group of activities open to all residents of Armitage with Handsacre. Disabled people can be transported door to door. All welcome.

01543 491704 or [gifford\\_foote@hotmail.co.uk](mailto:gifford_foote@hotmail.co.uk)

**TUESDAYS 10am - 11.45am** - Drop in to Handsacre Methodist room - the Vine Café. Meet friends over a cuppa and join in with activities and an interesting half hour.

**5th May: Trip to Trentham Gardens**

9.45am start from Handsacre by minibus. Open to all.  
Book with Celia 01543 491704.

**12th May: Flower arranging demonstration by Karen Wakefield, President of Hill Ridware WI.**

**19th May. Bring and Buy in aid of Alzheimer's Research and Raffle for Transport for the Disabled**

**Thank you to all who supported the Lent Lunches - £338 was raised for charity. Many thanks to Doreen, Pauline and Celia for the delicious soup and to Liz Coles's Bakery for the bread.**

## HOUSING AND HOMELESSNESS

Meeting Point had a very interesting talk by Allan Tranter and his colleague Liam, from Lichfield District Council. Allan and Liam showed themselves to be very caring people, They and their team deal with many rough sleepers and homeless families with individual concern for people in need. They are there to help if you are homeless or at risk of losing your home. Contact 01543 308000 / out of hours 01527 406643 or [www.lichfield.gov.uk/homelessness](http://www.lichfield.gov.uk/homelessness)

**If you have special need for transport to medical appointments phone 01543 547507 for help from Community Transport.**



## COACH OUTING TO LIVERPOOL TUESDAY 4th AUGUST

Starting from Handsacre at 8.30am,  
return from Liverpool at 5.30pm  
Adults £20, Children £10.

To book contact Celia at Meeting Point (The Vine)  
or 01543 491704

# TABLE FOR THE NATION



The 13 meter-long Jubilee Oak table, a 5,000 year-old fossilized black oak "Table for the Nation," is currently on exhibition in Lichfield Cathedral

The Church family from St John the Baptist Church, Armitage with Handsacre attended the unveiling and blessing of the Common Threads runner at Lichfield Cathedral - a beautiful 13 metre textile runner created from individually decorated squares contributed by schools, community groups

and individuals from across the diocese, displayed on the historic Table for the Nation.

We were honoured to make five squares that were sown on to this magnificent table runner that represented our different groups from St John the Baptist Church. It is a lovely recognition of our place in the community, and I would heartily recommend you going to see it in all it's glory.



# N.J. & E.T. COLES

Traditional Family  
Butchers & Bakery



39 New Road, Armitage, Rugeley  
WS15 4AA  
Telephone: 01543 490220

# AK Feeds

Equestrian, Pet, Poultry, Farm, Wild Bird and Fencing Supplies

Open to the public, we sell animal feeds and accessories from all the major brands.

Timber Posts, Rails and Stock Fencing Available.  
For Example: Timber Sleepers are now just £20.

Our huge range includes animal feeds, accessories and bedding

We also have a large range of wild bird feeds including Sunflower Hearts at £30 for 20kg

Local Delivery Service Available

Opening Hours: Mon-Fri 9am-5.30pm, Sat 9am-4pm

Address: 6a South Staffs Freight, Lynn Lane,  
Shenstone. Lichfield, Staffs. WS14 0ED  
Telephone: 01543 481521

**We thank the following  
businesses and individuals  
for their support in joining  
our Angel initiative.**

## **Business Angels**

N.J & E.T Coles Butchers & Bakery,  
AK Feeds Shenstone,  
Armitage with Handsacre Village Hall,  
Meeting Point

## **Community Angels**

Ann Hyden, Ann Samways, Claire LeVoi,  
Barry Liddle. Danny Briggs, Tessa Riley,  
Ron Riley, Gifford Foote, Sing For Joy (Lynne  
Tandy), Gill Hanson-Giddins



# CHURCH MICE

**ST. JOHN THE BAPTIST CHURCH,  
Church Lane, Armitage**

Wednesdays 10.30 – 11.30am  
Church Room open from 10am

A free activity for 0-4yr olds (with their carers) during school term time.

Refreshments, stories, songs, play & crafts with a Christian theme.

Donations of £1 per family welcomed

# The “Heavenly Light” Victoria Sponge

A joyful cake for May - when the sun shines, and the flowers bloom.

## Ingredients

200g self-raising flour (because we all need a little help rising)  
200g caster sugar (sweetness is a virtue)  
200g butter or margarine (softened)  
Four eggs (free-range, if possible - let them have their freedom!)  
One tsp vanilla extract  
A splash of milk  
Jam for filling (strawberry if you're traditional, raspberry if you're feeling rebellious)  
Icing sugar for dusting (a light heavenly snowfall)

## Method

Preheat the oven to 180°C (160°C fan).  
Or as we say in church terms: prepare the way.

Cream together the butter and sugar until light and fluffy. This may take a few minutes - perfect time to reflect on patience.

Add the eggs one at a time, mixing well, if it curdles, don't panic - many great things started off looking questionable.

Fold in the flour gently. No vigorous stirring - this is a cake, not a debate at the PCC meeting.

Add vanilla and a splash of milk to loosen the mixture. Aim for a soft dropping consistency.

Divide between two greased tins and bake for 20-25 minutes. Until golden, risen, and smelling like you've made a real effort. Cool, then sandwich together with jam. Be generous - this is not the time for restraint.

Dust with icing sugar and serve with a smile.

## A little Cheeky Blessing.

May your cake rise like a joyful hymn,  
Your tea be strong, Your conversation kind,  
And your slices never too small. And may  
there always be enough to share, And just  
a little extra... for those who arrive late.  
Amen

*Tessa Riley*

**ACROSS:** 1, Overwhelmed. 9, Valleys. 10, Strap. 11, Top. 13, Reel. 16, To do. 17, Incite. 18, Load. 20, West. 21, Notice. 22, Wash. 23, Thin. 25, Ash. 28, Noah's. 29, Ever not. 30, Onesiphorus.

**DOWN:** 2, Value. 3, Reed. 4, Host. 5, Lisp. 6, Ear lobe. 7, Overflowing. 8, Opportunity. 12, Obtain. 14, Lid. 15, A cross. 19, Abstain. 20, Wet. 24, Hindu. 25, Asks. 26, Help. 27, Hero.

# BREWERY STREET

## SHOPPING CENTRE

### Discover Rugeleys Hidden High Street Step inside Brewery Street Shopping Centre!

In Brewery Street, you'll find a collection of independent local businesses offering everything from gifts and treats to services and specialist stores.

Whether you're looking for a last-minute gift, a unique find, or simply want to support local businesses, there's always something new to discover. Come in, browse, and meet the friendly businesses that make our centre special.

Shop local. Support local. Discover Brewery Street.

### STORE DIRECTORY



LOCAL SHOPS • UNIQUE FINDS • FRIENDLY FACES

• BREWERY STREET, RUGELEY, WS15 2DY •

WWW.BREWERYSTREET.CO.UK • BREWERYSTREETOFFICE@GMAIL.COM



# The Vine

Stay as long  
as you like!

Lonely?  
Why not drop in?

Open Mon - Fri  
9.30am - 4.30pm

No charge  
Donations accepted

# Cafe and Friendship

A warm welcome, friendly conversation  
and support for those who need it.  
Good quality coffee, home made cakes  
and simple meals .

For activities see inside or our  
Facebook page and Website

Free hot meal to  
anyone in need

**Handsacre Methodist Church**  
Lichfield Road, Handsacre, Staffordshire. WS15 4DE

[handsacremethodist.org.uk](http://handsacremethodist.org.uk)