



THE CHURCH
OF ENGLAND

Horsford Benefice

Felthorpe · Horsford · Hevingham



Annual Report

2025

Year ending 31 Dec

www.horsfordbenefice.org.uk

Contents

The Rectors Report 2025	3
Covenant for Clergy Care and Wellbeing.....	8
Life Event Services in the Benefice 2025	9
Our Community Work 2025	11
All Saints Toddler Group.....	11
Work with local schools	12
Horsford C of E VA Primary School.....	12
St Faiths and Horsford Pre School:.....	13
Hevingham Primary School:	13
Easter Activity Morning	13
Residential Homes	14
Charitable Trustees	14
The Parish Councils 2025	15
Horsford Parish Council	15
Hevingham Parish Council	15
Felthorpe Parish Council	15
Norwich North Deanery Synod 2025	16
Horsford Benefice Mission Priorities Report 2025	18
Leading Your Church into Growth	18
The Benefice Mission priorities for 2025 were:	19
1. Prayerful	19
2. Pastoral	19
3. Making the most of our Life Events	20
Mission Priorities by Parish 2025 updates	20
Felthorpe Mission Priorities	20
Hevingham Mission Priorities	21
Horsford Mission Priorities	21
Mission Partners Report 2025	22
Who are our Mission Partners?.....	22
Aylsham Care Trust – ACT.....	22
The Children’s Society (TCS)	22
Military Ministries International (MMI)	23
A Rocha UK.....	23
Other charitable support: The Royal British Legion.....	23
Horsford Benefice Communication Report: 2025	24

Posters and leaflets 24
Community Information 24
Support for Fundraising Projects 25
Supporting Ministry 25

Contact

Revd Margaret McPhee, Rector



01603 893108



margaret.mcphee@dioceseofnorwich.org

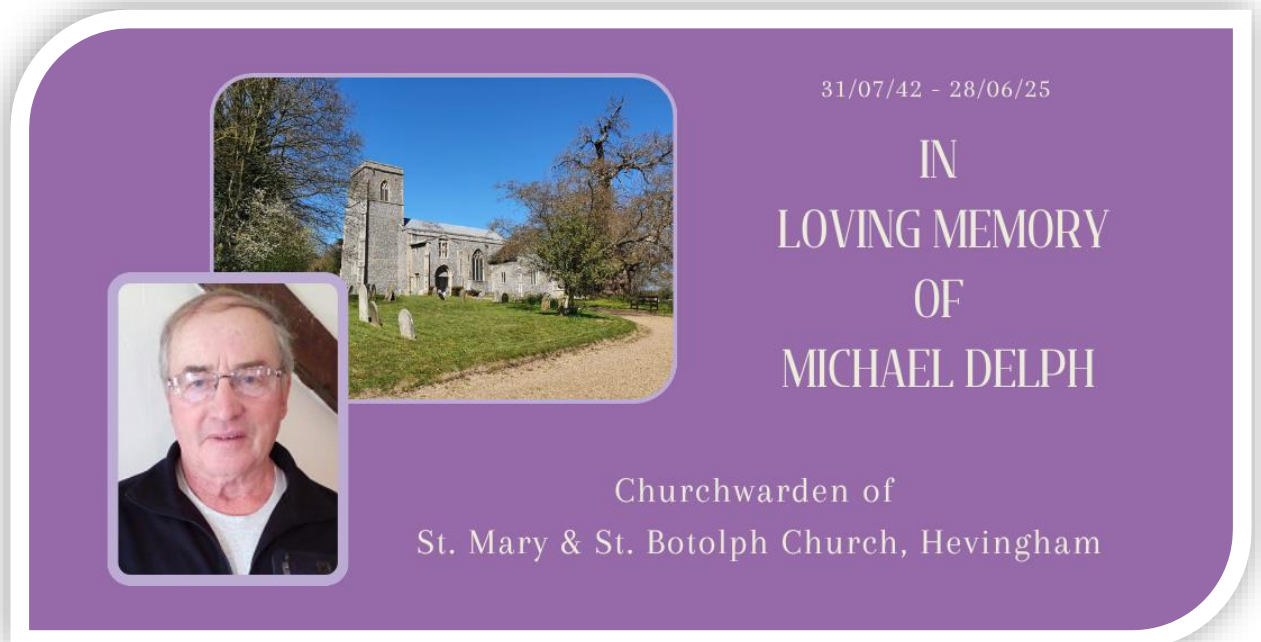


The Rectors Report 2025

There is much to be thankful in the past year. 2025 saw blessings, answers to prayer, refreshment and hope. I thank God for the work He continues to do amongst us and through us; for new people stepping forward and getting involved, joining our worshipping communities and many who give sacrificially in different ways.

At the start of this report, I give thanks to God to Mike Delph, former Church Warden of Hevingham Church. It was a privilege for Richard and I to take his funeral service of a faithful servant of Hevingham. His care and concern for the sustaining presence of God seen through the building of St Mary the Virgin and St Botolph, the church and keeping it open was clear to all of us. He had two stints as Church Warden, combining to over 20 years of heart service. He made a huge impact, always pottering in the church, checking the churchyard and lighting every candle possible in services! His heart was to serve “the good Lord”. His kindness, humour, commitment and passion are missed.

“They that wait upon the Lord shall renew their strength; they shall mount up with wings as eagles; they shall run, and not be weary; and they shall walk, and not faint.” (Isaiah 40:31).



The gift of Sabbatical was wonderful – thank you all to giving it to me! 12 weeks to pursue my studies, go on pilgrimage from Norwich to Walsingham, have a week long retreat at Quidenham Monastery and to spend time in prayer, resting, and being, it was amazing! All this was covered by two grants from the Diocese of Norwich, for which I am grateful.

I thank those who did so much to ensure the Benefice continued to function between Sunday's, and for those who covered Sunday and Tuesday services:

- Revd Phil Charlesworth
- Revd Lucy Dallas, Diocesan Director of Ordinands and Initial Training
- Revd Val Hooker
- Venerable Keith James, Archdeacon of Norwich
- Revd Richard Lamey, Director of Mission and Ministry, Norwich Diocese
- Revd Canon Aidan Platten, Canon Precentor, Norwich Cathedral
- Revd Robin Pritchard, PTO
- Revd Canon Sally Theakston, Bishop's Chaplain
- Revd Selwyn Tillett, PTO
- Revd Tim Yau, Rural Dean

Huge thanks to Richard McPhee, our Lay Reader, who covered all the funeral and burial of ashes ministry whilst I was away. Doing this in addition to his work and other commitments was a big task. I know he was encouraged and supported during this time – thank you to those of you who did. He told me he needed a Sabbatical when I returned!

“Now faith is the assurance of things hoped for, the conviction of things not seen.” (Hebrews 11:1)

Having a living hope in Christ brings assurance. A shared community of worshipping Christians, who pray together, bring joy to our worship, grow in service and surround us all in prayer is a wonderful thing. The power released with a prayerful people leads to blessing.

The roof repair project being completed in 2025 was one such blessing; with phase 2 of the thatch done. The miracles of money arriving at the right time; the generosity of giving was humbling and the timescales all mapped out perfectly. The photos in All Saints church of the project tell the story of community engagement, involvement and focus above and beyond all we could have imagined. To Him be the Glory!

The pattern of worship has remained the same at All Saints, Horsford:

Horsford, 10.30 am:

- 1st Sunday Common Worship Communion
- 2nd Sunday All Age Worship
- 3rd Sunday All Age Communion
- 4th Sunday Morning Worship

Felthorpe, either 3 pm GMT or 5pm British Summer Time .

The pattern of services is generally:

- 1st & 3rd Sundays BCP Evening Prayer or Celtic Worship
- 2nd & 4th Sundays BCP Communion

In addition, the agricultural service of Plough Sunday has been introduced at the beginning of January. Modern language services are growing with the use of Common Worship liturgy as well as Celtic Worship.

Hevingham has a pattern linked to the future hope that the church building will be accepted into the Diocesan Churches Trust i.e. a service during both Easter and Christmas seasons, Remembrance Sunday and continuing life event services. We still await a decision as to whether the Church goes into the Trust. It has to go to the next stage with the Trustees considering it alongside other churches too. The PCC await the decision. The finances have remained “hairy”. Following a “Save Your Church” leaflet delivered to every household in the village, one additional standing order of £10 per month was set up, making donations £80 per month. In addition, just under £1,000 was donated.

Our communications continued to be of high quality with Kevin Elliston coordinating the social media, website, poster and leaflet communications. You will find his report later in this Annual Report. The PCCs all remain grateful for his continued insights, creativity and proactivity.

Sustainability has continued to be a core area for all 3 Parishes, with each PCC reflecting on this in different ways. Hevingham PCC have now committed to become an Eco Church. Isi Saunders continues to co-ordinate the Eco Church work which is expected to develop in 2026.

Sustainability enables our churches to keep open and for the work of God to continue. This is primarily through planned financial giving of our congregations. With the Parish Giving Scheme (PGS) embedded and greater generosity being seen, the cashflow issues are less, but not eliminated, from across the Benefice. I give thanks to for our Treasurers, Kerry and David, who keep the PCCs updated.

“give, and it will be given to you. A good measure, pressed down, shaken together, running over, will be put into your lap; for the measure you give will be the measure you get back.” Luke 6: 38

The Diocesan Vision of being Transformed by Christ, prayerfully, pastorally and prophetically underpins our priorities as we seek to serve Him.

Our mission and engagement continues within the community which you’ll read in the rest of this report. I am grateful to those of you who have led and been part of the teams for the monthly Art and Board Games Social at Horsford Church Room, the School Uniform Bank, All Saints Toddler Group, Food Parcels collection, support of the breakfast supplies to Horsford Primary School, support to the services held at the local residential homes of Grenville Court and The Old Rectory and others of you getting on with welcome and hospitality in ways we don’t see.

Being part of a congregation and enabling is a collaborative approach. Team through community is essential so the joy of serving is shared. Thank you to those of you who support the weekly and other services through reading the lessons, taking intercessions, setting up and clearing away, welcome / verging are Lay Assistants at communion, play the music; you are vital – and there’s always room for more people to get involved!

Pastoral work is the heart of showing God’s love. It was a joy to commission Isi Saunders as an APA and who now takes on some of the pastoral work alongside the Home Communion team. What a joy to see the body of Christ served in this way.

Supporting God’s work beyond our Parish is part of our calling, and in line with the responsibilities of the “trustees”. Mission Partners are now in our 3rd year of support with Horsford PCC giving 5% of their planning giving total and Felthorpe 3% of their planned giving, shared equally. In addition, donations received at Remembrance Services are split equally with the local Royal British Legion Branch and the Christian charity Military Ministries International at each of our churches.

Growth in understanding our faith is a core for all of us. I am thankful to Richard, our Lay Reader, who took courses with the small group to delve deeper so as to grow in our faith, in particular the course on the Nicene Creed.

Thank you to....

- Richard, our Lay Reader, who inspires and brings a lightness of touch and humour to our lives together.
- Lizzie Baker and Isi Saunders who continue to serve with humour and dedication as part of the All Age Worship Team, working alongside myself and Richard.
- the after-service refreshment team at Horsford
- The cleaners who work behind the scenes at Felthorpe and at Horsford make a huge difference, ensuring the facilities can remain open to the public each day.
- Gill Bunn at Hevingham who ensures all is ready whenever the services take place in the building and for keeping an eye out to.
- the PCCs all contribute to the life of the Parish they have been elected to serve but also have wider eyes on the value of being Benefice.

It was joyful to have Jeremy Sly elected Church Warden in Horsford last April. What a difference 1 person can make (we need another 5 though...!). A Church Warden in a Parish brings hope. Jeremy has a great listening ear, absorbs the learning and responsibilities and truly collaborative. His insights bring a fresh perspective, for which I thank him, particularly as 2 weeks after he was elected I went on Sabbatical!

It remains a privilege to be supported in my wider Diocesan based ministries; thank you to those who pray for me and ask after this work. Being an Assistant DDO (Diocesan Director of Ordinands) brings a wider perspective of how God is working in this Diocese. Being a member of Board of Patronage has given me insight in the appointment and support to those Benefices/Parishes in vacancy, knowing my involvement, as those of others on the Board, represent the Bishop of Norwich. The Committee of the Bishop of Norwich for Books and Documents is a different kind of ministry, knowing the value of Parish Records and the importance of looking well in our Parishes as well as the safety of Norfolk Archives.

My time as Rural Dean for Norwich North Deanery finished in February 2025. I have been encouraged in this role by people beyond the Benefice as well as many of you within. I loved the role and the experience, seeing the wider Deanery perspective of God working through His church, it was the right thing to finish this part of my ministry after one term.

October 2025 saw me entering my 10th year of ministry in our Benefice. As we continue to work together, to grow in prayer, pastoral care and a prophetic voice in our communities, so I pray our priorities will remain that of following God's plan and being catalysts for the growth of His Kingdom in these Parishes.

May God bless us more in growth in numbers, in spiritual commitment to our calling, being joyful in our worship and in service to our local community, being further transformed by Christ in our pastoral, prayerful and prophetic life as we move into 2026.

“to Him who is able to accomplish abundantly far more than all we can ask or imagine, to Him be glory in the church and in Christ Jesus to all generations, for ever and ever.” (Ephesians 3: 20-21)

Revd Margaret McPhee, Rector

Covenant for Clergy Care and Wellbeing

This was approved by all 3 PCCs in 2021 and will be revisited in 2026. This is on the Agenda of every PCC meeting. Discussions and concern have been expressed about volume of work Margaret undertakes.

Margaret is usually very strict about her day off, ensuring an out of office is on her email from Tuesday tea time through to Thursday morning, 7.30am. The extra 1 day per month has been used less often i.e. about 4 of the 8 (excludes the Sabbatical period). Margaret is continually encouraged by Horsford PCC to take a second day off in a week to ensure 1 “mid-week weekend off” a month; she has also told clearly in her Ministerial Review this is vital to sustaining herself. The PCCs are pleased to note she meets her Spiritual Director every 2 months.

The Benefice supported Margaret's Sabbatical this year. Something she could have taken after 7 years of ministry, she took after almost 9 years.

Working expenses are paid in full and the PCCs support travel for an annual retreat.

Richard supports Margaret in her ministry. He appreciates being asked how he is, particularly during the Sabbatical period, but also beyond. There is nothing quite living in a Rectory, seeing the pressure and continuous care needed for public ministry to be sustainable.

Life Event Services in the Benefice 2025

Baptisms: Total 16

- Felthorpe: 1
- Hevingham: 10
- Horsford: 5

Weddings: Total 1 at Horsford

Funerals: Total 16

- Felthorpe: 2
- Hevingham: 5
- Horsford: 9
 - Church based funerals: 7
 - Crematorium based funerals: 8
 - Bluebell Wood funeral: 1

Burial of Ashes: Total 11

- Felthorpe: 1
- Hevingham: 1
- Horsford: 9

THE CHURCH OF ENGLAND
Horsford Benefice
Felthorpe • Horsford • Hevingham

All Saints, Horsford
St. Margaret's, Felthorpe
St. Mary & St. Botolph,
Hevingham

Your Parish Church is here for you

YOUR CHURCH
WEDDING

CHRISTENINGS

FUNERALS

For More Information Contact Revd Margaret McPhee, Rector
margaret.mcphee@horsfordbenefice.org.uk
www.horsfordbenefice.org.uk

YOUR CHURCH WEDDING

Safeguarding Report 2025

The Church of England continues to further work on Safeguarding, as a very high priority aspect of its ongoing work. Following the development of the National Safeguarding Standards, INEQUE, a company of independent auditors, have now been appointed to check compliance against these standards during January 2027.

Completion of the Parish Safeguarding Dashboard, along with the Parish Persons Dashboard will be central to the information needed. The Safeguarding Dashboard generates an Action Plan to facilitate achievement of compliance for each PCC.

We are required to complete the Dashboards and keep them up to date, along with relevant training and evidence of safer recruitment. The minutes of PCC meetings are one of the main sources of evidence that requirements have been met.

Safeguarding training continues to be refreshed every three years, along with DBS checks. Most roles will require Foundation Safeguarding Training (as the highest level achieved) and the Domestic Abuse modules only to be refreshed, once all initial training has been completed.

I should like to take this opportunity to thank everyone for their ongoing commitment to keeping our churches safe and working towards meeting safeguarding requirements.

Susan Jarvis, Parish Safeguarding Officer



Our Community Work 2025

All Saints Toddler Group

After a break in 2025, the group restarted in November, with five volunteers under Margaret's supervision, (trying to make sure that she has nothing to do!). The day was changed to Friday because of Church Room availability but this has proved popular as Mums who work part-time often have Friday off. We run a rota with three volunteers each week, sharing responsibilities for the various activities. We have all taken the Diocesan Safeguarding course and are planning to take level 2 Food Hygiene courses. We run during Term time only and have the second Friday of each month as a planning session. Each session we provide a craft activity, free play, singing, story time and healthy refreshments.

Numbers fluctuate between 5 and 10, though we did have 19 children at the Christmas Party, possibly lured by the appearance of Father Christmas!

We are known to be a church group and will plan activities and stories around the major festivals and God's creation.



Other than that, we have seen our purpose as being a Christian service to the Community, providing a safe, welcoming place for children to play and socialise, and for Mums/Carers to spend time together. We make an effort to befriend them and offer help when appropriate. We've received many appreciative comments.

We would like to honour Lizzie for her original vision though she is no longer able to take part because of work commitments. We are also grateful for the support of the PCC, particularly in bringing us under the Mission umbrella so that we don't need to consider whether or not we are financially viable.

All Saints Toddler Group Team: Gill Marchand, Frances Dawson, Sue Elliston, Sarah Hall, Maggie Rose-Horner

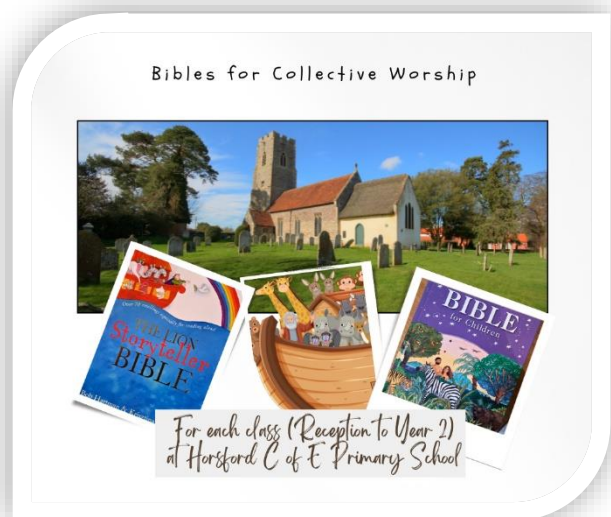
Work with local schools

Horsford C of E VA Primary School

At Horsford C of E VA Primary School, the visit of Graham, Bishop of Norwich to Mill Lane site to share the service celebrating 50th anniversary of school site opening was a highlight. He also spent time with the children and went on a tour of the School, meeting with Staff and many ex-pupils.

Collective Worship continues weekly. All are linked to the half termly Value. In addition, I have taken half term Vision and Value sessions at both sites which has included a focus on Spirituality, liturgical colours and Collective Worship cloths, and Christina symbols of Christmas Decorations. Year 6 came to church for their Leaver's Service, years 3 and 4 came for their Advent Experience and year 1 came for their carol service.

We are grateful for the Lord Wharton Charity who provide a grant to cover the cost of 35 of the Bibles given to the year 6 children leaving school. The Mission Fund, including donations at the time, covered the cost of Bibles given to every Reception child starting at Horsford Primary School. This continues to be a positive way the church makes a connection with the school and ensures our prayerful and spiritual commitment to the children.



The School staff and children donated around 300 Easter Eggs which I had the pleasure of distributing to Care Homes and residents around Horsford. In addition, the children donated goods at their Harvest Festival for Horsford Food Parcels, which again I had the privilege of taking two full car loads to Anna Green who coordinates the Horsford Food Parcels serving the villages of Horsford and Felthorpe.

The children also gave to All Saints in the form of a non-uniform day with donations towards the thatch. They really embraced the thatch project and have asked about it a lot since!

I am an active member of the Full Governing Body being a Foundation Governor, am Chair of the Nebula Federation's Ethos Committee and Vice Chair of the Governing Body and Governor for Safeguarding at Horsford.

St Faiths and Horsford Pre School:

New for 2025 was being invited by Horsford and St Faith's Pre School, once each half term, to read a story to them. It is a delight and they get very excited by the objects that accompany the relevant Bible stories of the season!

Hevingham Primary School:

I continue to take a weekly assembly at Hevingham Community Primary School, alternative weeks with KS1 and KS2. The focus is on a "word of wisdom for the half term" and can comprise a Bible Story or reflection or interactive activity linked to the Christian perspective of that word. In addition, I took a whole school harvest and Christmas service and have been asked to do an "RE" lesson i.e. baptism involving a visit to Hevingham Church and a follow up visit showing the children Registers of Hevingham and Horsford where quite a few of their names were in!

Would you like to

- read a story to Reception children as part of the Collective Worship at Horsford or at the pre school in Horsford?
- support Collective Worship at Horsford?
- What coming along to an assembly at Hevingham?

Come and find out more; you'd be very welcome.

Revd Margaret McPhee

Easter Activity Morning

Over 65 children came along to the morning. The hunt outside linked to Jesus and had different activity stations, reflecting the events of Easter week. At one point every pew in the Church was full of parents and children! The parents were able to sit and have a drink whilst the children completed their crafts. Many thanks to Gordon Barber, Wroxham, for sponsoring the event by paying for all the Easter eggs and the craft supplies. Also thank you to all the helpers on refreshments and at the craft stations. We look forward to next year!



Residential Homes

Monthly services continue at Grenville Court Residential home and The Old Rectory, Hevingham. Thanks to Jeremy Sly for being part of the team that visits Grenville Court and The Old Rectory and to Rachel Stowell who joins us when work commitments permit. The team is set to grow in 2026 to widen participation and make a great connection between the Church and these special communities.

Sadly 2025 saw the closing of New Dawn Residential home. An Easter service took place and later in April I was asked to go in to lead a special time of prayer for staff and residents.

Charitable Trustees

I remain on the two Hevingham charities; the John Hall Charitable Trust providing grants for school uniforms and those entering Further Education, and the Hevingham in Need Charity giving grants to those on social security benefits towards heating bills.

Brain Rowlands is a Trustee of a Felthorpe based charity providing support to those in need.

Revd Margaret McPhee, Rector



The Parish Councils 2025

Horsford Parish Council

I usually attend once every 3 months. The relationship with the Parish Council remains positive and constructive. The Council has agreed to support the cost of maintaining the churchyard for 2025 by £1,000 and have committed this amount in 2026, for which we thank them.

Hevingham Parish Council

I was only able to attend twice during 2025. The Council continues to support approximately 50% of the cost of churchyard maintenance i.e. £1,900 in 2024, for which we're grateful.



Felthorpe Parish Council

I was able to attend once in 2025. The relationship remains constructive and supportive, asking for an annual report from the PCC. The Parish Council supports the maintenance costs of the churchyard, covering around two-thirds of the cost, (£1,100) for which we're grateful.

Revd Margaret McPhee, Rector

Norwich North Deanery Synod 2025

Three meetings were held in 2025. In March, we thanked Revd Margaret for her 3 years as Rural Dean and in particular for encouraging a collaborative and social focus to the meetings, sharing the strengths of individual parishes in our Deanery and celebrating our successes together.

Revd Tim Yau was licensed as the new Rural Dean in worship led by Archdeacon Keith. The guest speaker that evening was Revd Canon Karlene Kerr, Rural Dean of Lynn, introducing the Racial Justice Toolkit. Appointed by Bishop Graham to lead this aspect of ministry and form a working team, Revd Karlene talked about the 5 areas of recommendation: Participation, Young People, Training and Mentoring, Education, and Governance and how these would be implemented in the Diocese. The **Racial Justice Toolkit** is a working document for parishes and is available on the Diocesan website. The 2021 report “From Lament to Action” is also available on the Diocesan website.

The summer meetings in July focus are more informal and involve a “trip”, this year to meet the team at Diocesan House.

The Autumn meeting in October focused on an introduction to the Pastoral Principles course with guest speaker Revd Rachel Foster and was held in our own Church Room. Revd Rachel was formerly a police officer in the Horsford area and worked as a facilitator, helping people with different viewpoints.

The Pastoral Principles

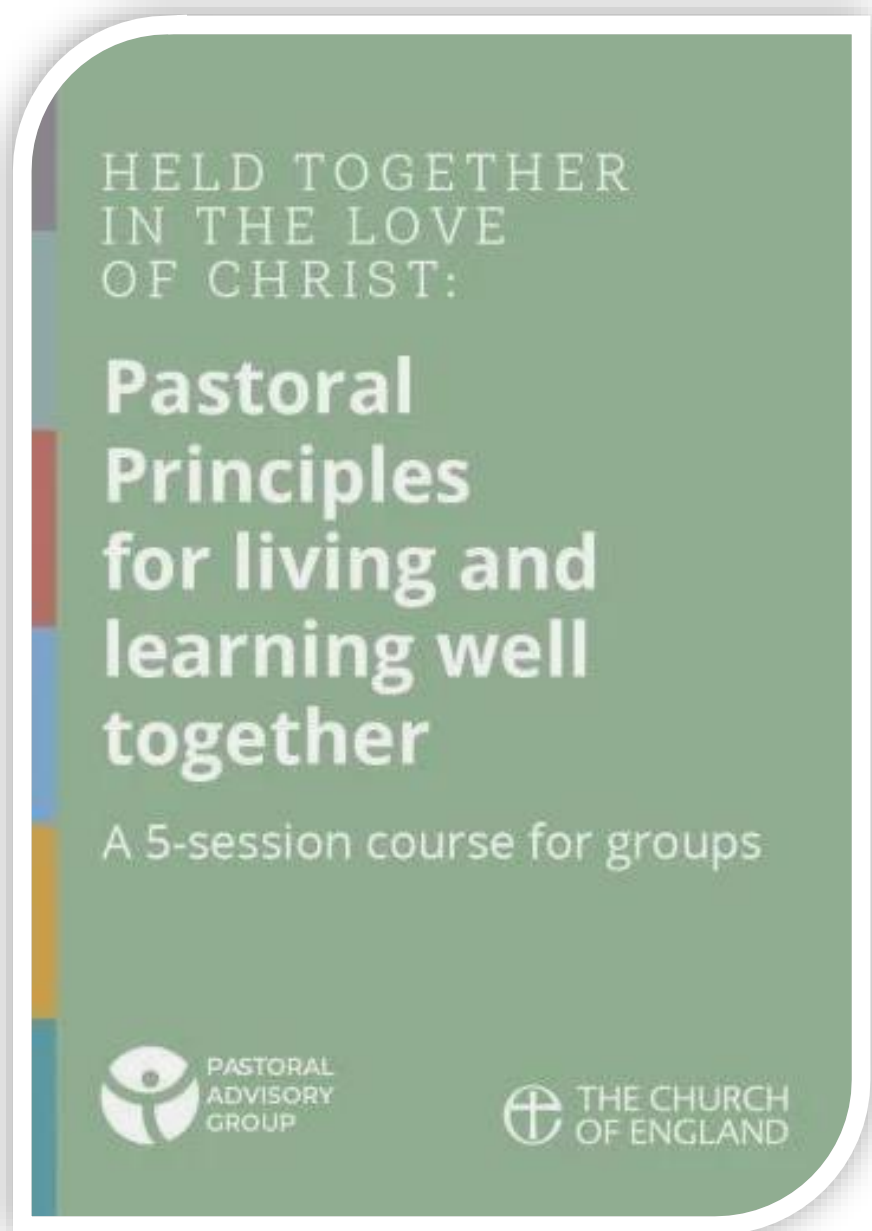
1. Acknowledge Prejudice – how do we love each other unconditionally?
2. Speak into Silence – how can we be willing to respect difference so that we all feel we belong?
3. Address Ignorance – in our preaching, public prayer and praying in informal contexts, how do we avoid assuming that we know what a person's needs or situations are?
4. Cast out Fear – how can we encourage one another to wrestle prayerfully with becoming a church that exhorts everyone to examine their worthiness in a meaningful and habitual way?
5. Admit Hypocrisy – as equal recipients of God's Love and Grace in and through the work of the Triune God, how do we show heartfelt respect in the way we speak with one another?
6. Pay Attention to Power – how do we encourage vulnerability in our relationships and look for ways of modelling it appropriately?

The meetings are always interesting and informative with refreshments served by the hosting church. It is a chance to share ideas and resources with other churches from our

Deanery and catch up with news from surrounding parishes. There are 2 main meetings a year and a visit to a relevant place of interest in July; in 2026 to the Julian Shrine in Norwich.

Isi Saunders stood down as representative in July 2025 due to work and family commitments. I am currently the only representative from Horsford, and also the Deanery Synod secretary. It would be lovely to have a further member from our church/Benefice to join me.

Rachel Stowell, Deanery Synod Rep



Horsford Benefice Mission Priorities Report 2025

Leading Your Church into Growth

1

Create a prayerful culture of Growth:
Mustard Seed (Matthew 13:31)

2

Implement the 4Ps: Prayer, Presence,
Proclamation, and Persuasion:
Kingdom Come (Matt. 6.10)

3

Practise fruitful evangelism:
Catching Fish (Mark 1:17)

4

Develop Engaging Worship:
Holy Ground (Exodus 3:5)

5

Become an inviting and welcoming church:
Banquet (Luke 14:21)

6

Make a pathway for seekers to become disciples:
Make Disciples (Matthew 28:19)

7

Begin a planned journey of growth:
Early Church (Acts 5:14)

The Benefice Mission priorities for 2025 were:

1. Prayerful

- Developing the proactive prayer life of the Benefice
- To have a facilitated group bringing forward the next step on how to develop prayer across the Benefice

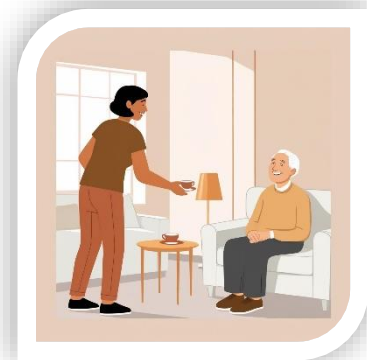
Update: Developing prayerfulness continues to be mission priority focus across the Benefice. There are now regular prayer bulletins from our Mission Partners which encourage prayers during the month, as well as the Prayer Diary from the Diocese. There are opportunities for anyone to lead intercessions at any of the regular services in any of the three churches, with support and guidance. Kevin Elliston, Jeremy Sly and Rachel Stowell worked together during 2025, exploring a wide range of ideas to develop prayer ministry further. Included in this was to have an opportunity for the Benefice to come together in prayer during seasons such as Advent; Evening Prayer was introduced in Advent 2025 attended by a small number of people. to explore ways of developing prayer across the Benefice and encouraging others to join in leading intercessions.



2. Pastoral

- **Embedding the APA, Home Communion and Pastoral support visiting into the life of the Benefice**

Update: Bishop's Approval was granted and Isi Saunders was authorised in the role of an APA. Her role has been clearly communicated across the Benefice. A second person who completed the APA training has kindly agreed to be available to support Margaret in pastoral visiting to members of the congregation.



3. Making the most of our Life Events

The Home Communion team, Brian Rowlands, Richard McPhee and Isi Saunders, continues to minister to those who are unable to get to a Church Service, whether for a short period of time or on an ongoing basis.

Review and develop approach across the Benefice

Update: In the autumn of 2025, the PCCs reviewed “Questions and Ideas for Parishes (C of E book)” with some initial reflections on the following questions:

- What might your church do differently to foster relationship with those who enquire about Life Events?
- How can you involve the whole congregation in supporting mission and Life Events?
- How can your church develop confident expectations that they are able to reflect God’s hospitality and share the story of Jesus with those whom they meet at Life Events?

The Life Events Welcome Team have met and reviewed how they welcome family and friends at baptisms, weddings and funerals; the joy and privilege of serving at such services continues to be present amongst those who serve.

Mission Priorities by Parish 2025 updates

Felthorpe Mission Priorities

Cultivating Fruitful Festivals (LYCiG 4)

Focusing on

- Continue to embed the Agricultural Year festivals of Plough Sunday, Rogation, Harvest
- Concentrating on and developing fruitful festivals
 - Advent, Lent, Remembrance, Christmas Carol Service

There was an increase in numbers attending festival services at Felthorpe, i.e. Advent, Remembrance, and the Christmas Carol Service. These services had been supported by regular posts on Facebook and leaflets, cards and posters across the village.

There focus on further developing the fruitful festivals connected to the agricultural year: Rogation, Harvest and Plough Sunday. Plough Sunday was introduced with 2 tractors and a plough along with members of the community. 16 people enjoyed this accessible. The congregation gathered for Rogation and Harvest services, praying for and giving thanks for all who provide our food.

Hevingham Mission Priorities

a) **Extending a Warm Welcome (LYCiG 5)** A thorough clearing away of unnecessary clutter and tidy-up took place. Relevant information for visitors was made available for visitors.

b) **Cultivating Fruitful Festivals (LYCiG 4)**

There was an increase in numbers attending the festival services at Easter and the Christmas Carol Service. The latter was accompanied by members of Horsford Strings. Remembrance continues to be well attended, including the laying of a special wreath by Prefects from Hevingham Primary School. These services had been supported by regular posts on Facebook and leaflets, cards and posters across the village.

Horsford Mission Priorities

Extending a Warm Welcome (LYCiG 5)

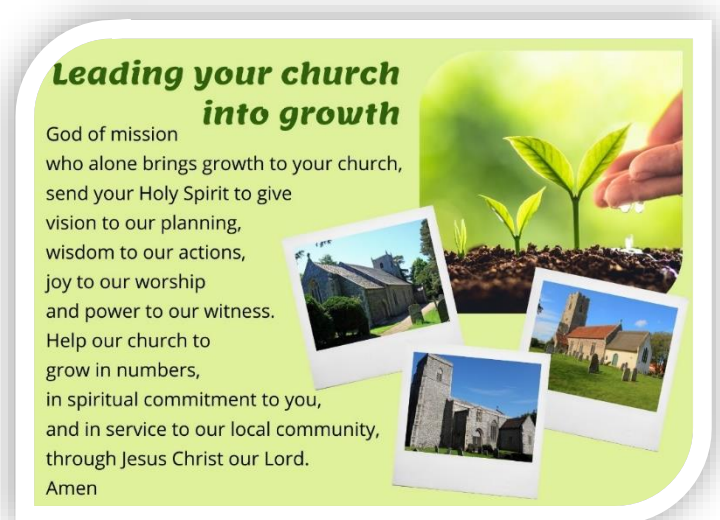
Offering hospitality and welcome to all who come along to services is a core ministry. Jess Hasketh-Boston has led a sustainable and consistent provision of refreshments after the Sunday services. She is being supported to build a team during 2026

Those who are involved in and are part of the set up team met in 2025 to review what's involved and encourage the sign up of this vital ministry.

The Welcome Team also had a review time and suggested some improvements to making this area of ministry work more efficiently and with grace to those who come to worship.

Housekeeping within the church continues with sorting of what is There was a significant clear-out of unnecessary clutter in the church which helps create a welcoming space.

Revd Margaret McPhee, Rector



Mission Partners Report 2025

The Horsford Benefice of Churches support three Mission Partners (ACT, A Rocha, Children's Society) through prayer and a percentage of their planned giving (see below). Military Ministries International is supported via donations which equally shared with Royal British Legion and received at the annual Remembrance Services.

This report briefly summarises the developing relationship of the three churches in Horsford, Hevingham and Horsford with their respective Mission Partners during 2025.

Who are our Mission Partners?

- Aylsham Care Trust - ACT (Horsford)
- A Rocha (Felthorpe & Horsford)
- Military Ministries International (Hevingham & Horsford)
- The Children's Society (Felthorpe & Horsford)



Aylsham Care Trust – ACT

The Aylsham & District Care Trust is mission partner with All Saints Church Horsford and we are proud to be associated with their work. They provide support to those in need within the local community, ensuring that everyone has access to the care and help they require. Their work touches the lives of many and truly embodies the spirit of community.

- ACT Newsletters are distributed and available to read on the display board in church.
- A group from All Saints congregation visited ACT in Aylsham, learning more about their work and enjoying their hospitality.

The Children's Society (TCS)

The Children's Society is a mission partner with Horsford and Felthorpe churches and is

helping us to extend our community outreach efforts to young people. They are a national charity that run local projects, helping children and young people when they are at their most vulnerable, and have nowhere left to turn. Their work is invaluable, and we are proud to be associated with them.

- All Saints Church promoted the work of the TCS again via the Christingle Service, which was well attended and the carol service at Felthorpe Church.
- The Prayer Letter for TCS is circulated via email and paper copies are available.

Military Ministries International (MMI)

All three churches support the MMI at Remembrance Services.

MMI supports Christians in the UK's armed forces. Christian service in the military can be a lonely experience; fellowship can be scarce and good, bible-based teaching hard to find.

A Rocha UK

A Rocha is a unique mission partner that merges the Christian faith and environmental conservation. They are a Christian organisation engaged in practical conservation and environmental education. Their work not only benefits our local community but also as a wider impact on the global environment.

The A Rocha newsletter and prayer focus is circulated via email and printed copies available in the churches.

All Saints Church continues to be a Fair Trade church, using only Fair Trade products. Cleaning materials for the church and for use in our toilet facilities are all plant based across our churches, again ensuring safety and sustainability to our world.

Other charitable support: The Royal British Legion

All three PCC's (Horsford, Hevingham and Felthorpe) support the work of the Royal British Legion with the offerings given at the annual Remembrance Services, held around the respective war memorials, being shared equally between the Royal British Legion and Military Ministries International.



Revd Margaret McPhee, Rector

Horsford Benefice Communication Report: 2025

This year all four of our websites, ‘Horsford Benefice’, the ‘A Church Near You’ (acny) websites for Horsford, Felthorpe, and Hevingham, had a makeover with the view to a clearer, more welcoming visual identity that reflects who we are: three Parish Churches and a Benefice. community.



The Benefice website update included ensuring the website was both desktop and mobile phone accessible, this however was not an easy task as the website hosting platform is completely ‘self-directed’ learning, apart from online support online or in person from technical support.

Posters and leaflets

- Again in 2025 good use was made again of the free CanvaPro account to design posters for the church noticeboards and the respective websites.
- Leaflets included the refreshed Toddlers Group, and new flyers for the Arts and Crafts Social Group and a refresh of the Horsford Church Room posters.
- Once again, the main seasonal focus for Communications was Easter and Christmas cards and bookmarks. Christmas was supported with the design assets from the national CoE Digital Team.
- All professional printing was via GoWise printers in Norwich. In-house printing is kindly undertaken by Revd Margaret using the Benefice colour printer; colour printing has however been more limited than previous years due to the cost of printing in-house publications.



Community Information

- Revd Margaret continued to produce her Benefice Weekly News-sheet, which is welcomed by everyone who receives it and it was posted to all our acny websites and then uploaded to the Benefice website.
- Local parish events, and news updates were posted to website in news stories celebrating the life of the three parishes.
- Poster summaries of Revd Margaret’s work with the local schools were made and displayed in church.
- The Horsford All Saints Church Facebook Group page was refreshed with a new homepage banner and regular items posted.
- The Facebook Group membership has grown to over 350 people.



Support for Fundraising Projects

- Thatch Roof Project: Comms support was provided to the All Saints Thatched Rood Project, with regular updates and information posted on the Benefice website and Facebook Group pages and the Stewardship fundraising site.



Supporting Ministry

- Life Events publications: The full suite of Life Events posters for Christenings, Weddings, and Funerals and their associated Ministry support booklets were revised in conjunction with Revd Margaret.
- Support was also given for the design of Orders of Service covers.



Our Websites: www.horsfordbenefice.org.uk | www.achurchnearyou.com/St-Margaret-Felthorpe | www.achurchnearyou.com/All-Saints-Horsford | www.achurchnearyou.com/St-Mary-St-Botolph-Hevingham | www.achurchnearyou.com/Horsford-Benefice



Kevin Elliston: Communications Support, Horsford Benefice

