

**THE  
NIB**  
COMMUNITY



PARISH MAGAZINE OF NEATISHEAD, IRSTEAD & BARTON TURF

# Cheers to 50 Years

**Celebrating The NIB's 50<sup>th</sup> birthday – see page 6**

Many thanks to Century Printing for this graphic



## The Benefice of St Benedict

### The Importance of the Human Factor

Personal interactions, face to face conversations, simply speaking to another person; these aspects of life have always been an absolutely essential part of our world. They are also vital in establishing community links and improving our general personal health and well-being.

When we talk to a person we make a connection, we make a link. At that moment we can react to the conversation; we can offer a smile and a few pleasant words which might just make a big difference to the recipient. We can also be attentive, active, and available to offer our help and assistance if we sense someone is in need.

I recently stayed at a hotel where they no longer had any staff to welcome you or check you in. Instead, it was an impersonal and un-staffed computer screen to tap into. It was possible and even encouraged that you could stay at the hotel without ever speaking to a single person throughout your stay.

Restaurants are starting to do the same thing, ordering on a screen or an app, without actually speaking to a member of staff.

We of course also see this same development in our supermarkets which continue to encourage customers to undertake self-scanning when it comes to their shopping; a blatant and obvious attempt to reduce costs by employing less staff.

However, the human factor is absolutely essential to our society and should be valued more than any financial profits.

As a society we need to interact with one another, otherwise, we are at risk of becoming a world of isolated individuals, simply tapping away at screens and not engaging with each other.

Jesus always had time for other people. Christ knew the importance of listening, engaging, and having conversations.

The Church has continued to follow the example of Christ, therefore, I can assure you that the Church will always be there for every single person in our community.

Ready to listen, ready to support, ready to provide the human factor, and best of all, you do not have to order any of that on a screen!

Praised be Christ.

*Revd Ben*

## Latest news from our Sunday Club

We had a fun and enjoyable session at the start of May where we looked at the story of Jonah and the Whale.

We each made our own Jonah and Whale to take home and put on display. We finished our Club with a game of 'Jesus says', a slightly fun twist on 'Simon says'.

### Upcoming Dates and Events

**Sunday 21<sup>st</sup> June**- 11am Sunday Club Takeover at Neatishead.

All children are most welcome to the Sunday Club. Please do come along, it's great fun. Parents are welcome to stay or can collect their children at the end of the club. For more information, please contact Pauline Simpson on pauline761@btinternet.com or 07818 599303.



### St Michael and All Angels' Barton Turf

May I begin by thanking everyone for all the good wishes and cards that you sent me after my argument with my hip. I am recovering slowly and making good progress.

Thank you to all those who supported the Christian Aid service which was held in conjunction with the Baptist Church on 10<sup>th</sup> May. I would also like to thank Rev Neville Khambatta for taking the service.

The June coffee morning will be on **Saturday 21<sup>st</sup> June** at the usual time. Look forward to seeing you there.

And don't forget Barton Fete on **Saturday 6<sup>th</sup> June**. See entry below.

*Barbara Pilcher Churchwarden*



### Barton and Irstead Church Fete at Barton Hall, Barton Turf

A flyer will have been inside this month's NIB. Put the date in your diary – **Saturday 6<sup>th</sup> June at 2pm**.

Fingers crossed for good weather!

There is something for all, so come along, bring the family and join everyone in having a good time.

Music supplied by the Ukulele Band which we welcome back again this year.

It is not too late to make those last minute donations, all the details were in May's NIB, particularly items for the Raffle.

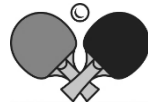
*Barbara Pilcher*

**NVH Community Market**

We look forward to seeing you all at our next market on **Saturday 13<sup>th</sup> June**.

After our successful event in May to include Table Top and Car Boot spaces we have decided to hold another in July. So, another opportunity to have a 'sort out' and recycle some of your no longer used items.

We hope to see more Car Boot sellers as the weather should be much warmer as well!



**Table Tennis at New Victory Hall**

Join us every Tuesday from 7-9pm. All are welcome: bats and balls available - just bring yourself. £2 per session and refreshments are available.

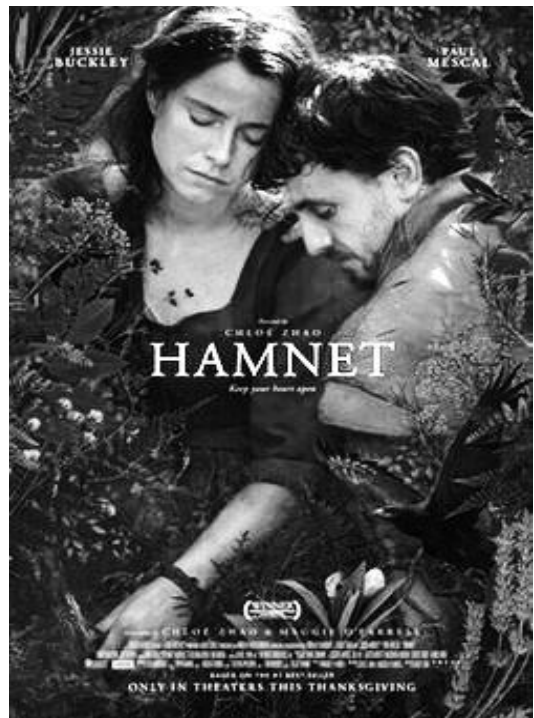


**Village Screen**

**Monday 1<sup>st</sup> June 7pm for 7.30pm**

Based on Maggie O'Farrell's novel, Hamnet (2025/26, Cert 12A, 125 mins), is a devastating and beautifully crafted historical drama that explores the profound grief behind William Shakespeare's creation of Hamlet.

Most critics agree that it is a "tearjerker" of the highest order, anchored by a career-defining and Academy Award winning performance from Jessie Buckley.



**The Community Market**  
**NVH Neatishead**  
**Saturday 11th July**  
**9am till Noon**  
**New Stalls PLUS**  
**Book a Table Top or Car Boot Space**  
**for individuals as well as**  
**Community Groups**  
**£5 per table or car boot space**

**To book get in touch asap with**  
**Pauline 07818 599303**

*Please support all our stalls as well as*  
*enjoying our delicious butties.*

**Neatishead and Barton Turf District WI**

As the past months have gone by, we have had lots to celebrate. Firstly, our 93<sup>rd</sup> birthday afternoon went really well. Members enjoyed an afternoon tea and talk by Pete Goodrum, who came out of retirement just for us. Many thanks go to our talented committee for the wonderful food.

Next, we heard of our great success in winning the Federation quiz, beating all other WI teams in Norfolk. At our FAM meeting in Norwich, I was first up on the stage to collect our certificate and engraved jug. Well done to our team.

As we started our 94<sup>th</sup> year, we also celebrated some new members and the fact that we are still a lively and strong group. Our monthly meetings are always on the 3<sup>rd</sup> Wednesday of the month at 2pm. If interested please come along and join us. You can contact us on [neatisheadwi@gmail.com](mailto:neatisheadwi@gmail.com).

Sally Church President

We look forward to welcoming you to the New Victory Hall where tea/coffee will be available for a small charge. Please visit [www.victoryhall.info](http://www.victoryhall.info) to book tickets. Or make a reservation by calling Christine on 01692 631347. Subject to availability tickets (£6) can be purchased on the door, card or cash.

*The Village Screen Team*

**Welcome Pack**

The NIB team have created a package to welcome newcomers to the villages. This package contains a range of useful information and leaflets, including a NIB (obviously!) and details of the shop, village hall, pub etc. If you are aware of a property which is due new residents, please let us know.

Sue Clayton 07850 436211  
[thenibmanager@gmail.com](mailto:thenibmanager@gmail.com)



## Garden Club

The club's June meeting is on **Monday 15<sup>th</sup> June** in the NVH at 7.30pm. Tony Brown will be speaking about 'Wildlife in Your Garden and Global Warming', a topic which is especially relevant given the changes in weather patterns which we have experienced over recent years.

Looking ahead, on **Monday 20<sup>th</sup> July**, we are linking up with NIBCHG, for a talk on 'Farming in a Bygone Age' with Brian Hedge.

Schedules will be available later this month for the Village Show which is on **Saturday 5<sup>th</sup> September**. Garden Club members will be emailed a copy but anyone living in our three villages and neighbouring villages who wish to participate please contact me and I will send you a copy. The Village Show and our meetings are open to all. Visitors to our monthly meetings are welcome at a cost of £4 which includes a cuppa and biscuit.

Jane King 07423 820228  
janeelizabethking@hotmail.com



## Friends and Neighbours

At the next meeting on **Thursday 11<sup>th</sup> June** from 10am to noon in the New Victory Hall the Rev Sue Seeley will be hosting a coffee morning. Two weeks later there will be Summer Bingo **Thursday 25<sup>th</sup> June**. Visitors are always welcome to come along for a cuppa and biscuit, raffle and bring and buy. For more information about the club please contact the Chair Person, Jean Barber on 01263 721698.

Jane King



## The Friends of Neatishead School

The Friends of Neatishead School are excited to announce our upcoming **Rodeo Round-Up** on **Friday 10<sup>th</sup> July**, a fun-filled western-themed fundraiser for the whole community, featuring games, food, prizes and family entertainment.

To help make the event a success and raise as much as possible for the school, we are looking for support from local businesses and residents through sponsorships, raffle prizes, donations or services.

Any contribution, big or small, would be hugely appreciated and will help create a fantastic community event while directly supporting our school. Please contact the school or FONS (friendsofneatisheadschoo@gmail.com) if you would like to get involved and keep an eye out for posters around the village! Thanks

Lisa Seager



## Neatishead Community Gym

The NIB's May edition went to press on the same day as the Community Gym's wonderful plant sale in April.

We can now confirm that we were able to raise over £1,600, with excellent attendance and top-quality produce. Huge thanks to all buyers and growers and helpers on the day.

The gym is a not-for-profit charity that relies on members' subscriptions as its main income. We have a qualified instructor present at every session and, even though we now have a wide range of fitness equipment, this has to be kept up-to-date and in excellent working order. We rent our amazing local venue (the NVH) for 18 hours each week and appreciate that annual costs may rise. Where possible we research and apply for grants, but a successful fund-raising event is an enormous help to our viability.

The gym is run by a voluntary committee, and our 2026 AGM is fast approaching. Neatishead Community Gym AGM, NVH, on **Monday 29<sup>th</sup> June at 7pm**. Some of our current committee members have served for several years and we would very much welcome additional volunteers. If you are a gym member, do please attend and consider volunteering to help. The committee role is not time consuming, but it is vital to keep the gym a going concern.

If you are not yet a gym member but have considered it: do please also attend and find out a little more. Also see: [neatisheadcommunitygym.com](http://neatisheadcommunitygym.com)

Joan Dickie



## Neatishead Knit and Stitch

It's International Knit in Public Day on **Saturday 13<sup>th</sup> June** 10am till 12 noon - look out for the K&S ladies outside The Regency Gift House or the White House Stores let's hope for a sunny day.

Do bring along your needles and join us. Meanwhile our evening meetings continue on the **2<sup>nd</sup> and 4<sup>th</sup> Wednesdays** of the month - see diary for dates.

All welcome whether you are an expert or beginner we'd love to see you. Contact 07760 643739.

Claire Penstone-Smith



## NIB Adverts

Please take a look at the adverts on pages 13 and 14 we have a new add this month.

These adverts are vital to the NIB if you are aware of a local business which might be interested in an ad, please pass on my contact details.

Sue Clayton, Manager 07850 436211  
nibadverts@gmail.com

## Neatishead, Irstead & Barton Turf Community Heritage Group

Many of our Norfolk villages are spread across narrow lanes and Irstead is no exception. Perhaps one might consider Irstead Church to be the centre of the village with three or possibly four clusters of houses accessed by lanes and a waterway which lead to the church.

We are going to take an evening heritage walk around the footpaths and lanes of Irstead on **Tuesday 9<sup>th</sup> June**, starting at 6pm, with refreshments at Wren Corner. During our WW1 project we studied the 1911 census and found there were nearly half the number of properties then as there are today, but just over double the number of residents with many more children.

We have both printed and digital copies of the 1911 census in our archives, if you are interested in knowing about the people who lived in our villages and how they earned a living at that time, do get in touch we will be pleased to share this information with you.

Meanwhile if you would like to join us on the walk, please contact me, numbers will be limited. NIBCHG Friends will be emailed details. If you are interested in discovering more about the public footpaths and longer trails across Norfolk, an interactive map is available on the Norfolk County Council website at <https://maps.norfolk.gov.uk/highways/>.

Contact: [claireps@btinternet.com](mailto:claireps@btinternet.com), or 07760 643739.

*Claire Penstone-Smith*



### Norfolk Punt Club

Punt Club members are continuing to enjoy their Centennial year with lots of new events to celebrate. In early May the club welcomed visiting sailors and their boats to the open weekend for punts. Nineteen boats took part which was a record number for many years with entries including the 108-year-old punt, Prawn. There were several boats sailed by local residents, including the youngest helm, Henry Drew, crewed by his father who is club commodore this year. The punt class has commissioned a documentary film showing the history of the class and the weekend weather meant that boats could be filmed in all conditions including strong winds on the second day. Several crews tested the water temperature with a swim!

In the coming days, there will be a film evening with the classic Arthur Ransome story "Coot Club" being shown on the pontoons. The Club will also have a stand at the Royal Norfolk Show on **Wednesday 24<sup>th</sup> and Thursday 25<sup>th</sup> June** and will welcome seeing friends old and new from the three villages. Find us in the Broads Village area.

*Liz Oliver*

## Resident of this Parish

Early in May Felicity and Clive Gritten BEM JP were guests at Windsor Castle for Clive to be appointed an MBE by HRH Princess Anne, The Princess Royal. This, for meritorious services to children, young people and the community in Norfolk.

HRH Princess Anne was aware of Clive's many and varied voluntary roles involving Scouts for 52 years, the Duke of Edinburgh's Award Scheme for 50 years, teaching British competition target shooting for 33 years, as an organiser of the annual 'Open Christmas' event at Great Yarmouth for 30 years, issuing concessionary licenses for the Broads Authority National Park for 30 years, being a Magistrate and Lay Judge in Norfolk and Suffolk for 27 years, helping inside HMP Bure for the Independent Monitoring Board, being a First Aid trainer and Community First Responder whilst an East of England Ambulance Service Trust driver.

And all this whilst working for the State Veterinary Service for 40 years dealing with animal health, welfare, by-products and zoonotic disease prevention at docks, airports, on farms, in zoos and parks, production units and abattoirs throughout the UK. For Clive and Felicity, Ffai and Jonathan it was a remarkable and extraordinary day to be long remembered....

Many congratulations Clive. Editor



### Alzheimer's Society Trek 26

Together with my friend Sue, we are undertaking the challenge of a sponsored 13-mile Trek for the Alzheimer's Society in memory of Sue's husband, Alan, who died in 2023, having been diagnosed with Alzheimer's a few years before.

Sue lives in Yorkshire and so at the end of July we are looking forward to undertaking the Yorkshire challenge along the beautiful coast and moors of North Yorkshire for this very worthy cause.

If you would like to sponsor us in our endeavours please call me on 07760 643739 or we do have a Just Giving Page [www.justgiving.com/page/claire-penstone-smith-1](http://www.justgiving.com/page/claire-penstone-smith-1). Meanwhile if you perhaps would like to take part, there is also a Trek 26 event along the North Norfolk Coast at the beginning of August.

*Claire Penstone-Smith*

## NIB 50<sup>th</sup> Party

On Saturday 25<sup>th</sup> April, the NIB held a celebration afternoon tea to thank so many people who have been involved in the NIB over the last 50 years – this included editors, deliverers, helpers, and so on. It was a truly lovely afternoon. Roger Lamb very kindly said a few words for us, most of which are included below:

Who else besides me picked up the April edition of NIB magazine and wondered what Agatha Christie's picture was doing on the front cover! Obviously it wasn't Agatha Christie, but Lady Delia Peel, one of the co-founders of the NIB magazine. Lady Delia was the first editor with Alice Dennes as deputy editor, and we are here today to recognise and celebrate them along with all those involved with the production and distribution of the NIB over the last 50 years. The NIB has covered so much of our community, but I just want to pick on some very early recollections.



Alice wrote a little book all about Neatishead, and she said 'We cannot live in the past, but perhaps sometimes it doesn't do any harm to take a backward glance'. Over the years, Neatishead, Barton Turf and Irstead have all taken their part in supplying editors to produce the magazine. Everyone can help the team by sending in news, dates and interesting stories to quote Alice. Also interesting to note here, that Alice says that the NIB was first produced after the North Walsham Magazine ceased because of production costs. That obviously led to much discussion as to how the NIB would be funded, but it was decided that it would be by donations only and thankfully due to peoples' continuing generosity, the NIB still flourishes 50 years later.

The NIB was first produced in April 1976 at the time of Canon Fox's retirement. The Rev Norman Mitchell was inducted in July of that year and he was also instrumental in those early days. In a message in the NIB to the parishes prior to his arrival, after introducing himself and his family, he wrote 'I hope that we shall be able to keep the News going'. I'm sure he would be extremely pleased to see that 'the news' is still going, very successfully 50 years later. In a book about Lady Delia, Norman Mitchell reflected on the early days of preparing the NIB, "These are the stuff of my memories he says, the chaos of countless scraps of paper, strewn all over the library when Alice Dennes and I joined Lady Delia to produce the magazine: the break for tea when one of us had to dive into some hidden corner to rescue the kettle from screaming its head off!" In another edition of NIB Norman wrote a glowing Tribute to Lady Delia on her 90<sup>th</sup> birthday, in the section that Lady Delia herself called the 'Vicar's Holy Bits' And of course, the NIB was primarily a church magazine which now also includes many interesting articles about our busy and varied community.

The magazine has evolved over the years, from A5 to A4, and the content has evolved with each editor and editorial team bringing something different to its pages. In more recent times the 'Vicars holy bits' have been moved on to page 2. Sorry Rev'd Ben! But I like the way the NIB now has different pictures on the front cover that I think makes the magazine look more interesting and likely for more people to pick it up, open it and actually read it. That means that more people are likely to read the 'Vicars holy bits' than before. So well done again NIB production team. Another recent addition is the children's section, it's brilliant, so well done there, it has improved my dot to dot skills enormously!

A very apt and suitable accolade for the magazine came from Peter Wellsted. Peter's mother Joan was sister to Alice Dennes. Joan who is now 96, lives near her son Peter in Lincolnshire. I had contacted Joan when looking for information about the NIB and it was her that pointed me towards the book about Lady Delia, and the snippets about Rev'd Mitchell quoted earlier. Joan got her son Peter to forward to me those snippets and in so doing Peter added this comment, 'I have to say that I thoroughly enjoy looking through Mum's copy of the NIB, the quality and scope of it surpasses anything we have up here'.

So, very well done team NIB. Thank you to everybody involved with the 'Neatishead, Irstead and Barton Turf News', both past and present. Although everyone involved in the magazine production and distribution is important, possibly the most important are the editorial teams, without whom there would not be a magazine to publish. There have been 44 different editors, many have done it more than once and I'm sure the team would be only too pleased to welcome any new editors. Don't forget that you start as deputy and so are eased into the role: it's dead easy really! So, Thank you editors, deputy editors, managers and deputy managers, all who typed, printed, sorted and stapled over the last 50 years. All those terrific people who deliver, and the husbands and wives that have helped too, and of course all the contributors that make the magazine so varied and interesting, Thank you all so much and perhaps we can now raise a cup/glass to all friends present, past, absent but not forgotten. And then for today, a very big thank you to all those who have baked, buttered, sliced and brewed and produced this lovely tea for us.



Many thanks to Mandy Parks and Greta Hunt who put so much work into making it a lovely afternoon, and to the rest of the NIB team for all they did. Thanks also to Claire for the rolling presentation, to Hugh for AV support, Roger Lamb for speaking for us, Marion Lodge for scones and to Jane Harris for more scones and sandwich support! **And above all, thank you to all who did and continue to support the NIB – we really couldn't have done it – and continue to do it – without you. Thank you.**

*Sue Clayton, NIB Manager*



## Neatishead Bowls Club

Well so far, we have been blessed by good weather for the start of the season and have only lost one of our first four matches. Many an afternoon has been spent with a refreshment or two in local pubs after the games.

This year the club is running an Open Aussie Pairs Tournament on **Sunday 14<sup>th</sup> June**; prior registration is required and an entry form along with the rules can be obtained from Andrew (details below). Players are invited from all clubs to take part. Refreshments will be available during the day along with a raffle. There is a £100 prize pot and we are hoping for a great day.

We are offering free membership to new members this year, and we meet for our roll ups on Saturday afternoons at 1.30pm and the 1<sup>st</sup> and 3<sup>rd</sup> Wednesday evenings at 6.30pm, so if you fancy some light exercise and a chance to meet some new people we would love to see you.

To take part in bowls all you need is flat pair of rubber soled shoes and yourself. To start you off, the club will have bowls to lend to you and no experience or special skill is required. As well as gentle exercise, fun and friendship, we can promise you coaching to learn the game, a way to explore Norfolk and a beautiful place to play bowls.

We welcome players from ages 12 upwards although anyone under 18 will need to be accompanied by an adult.

If you need any more information, please contact: Andrew (Chair) [email a.wood2207@btinternet.com](mailto:a.wood2207@btinternet.com) or 07715 801309.

*Annette Wood Club Secretary*



## Weather Report for March-April

### Spring drought continues through April into May

In April the total rainfall recorded was just 4.8mms/0.19in or 10% of average. This is the second consecutive very dry April dominated by high pressure to the east and north.

Daytime temperatures were above average although several ground frosts occurred and one air frost (-1.1°C) recorded overnight on the 23<sup>rd</sup>/24<sup>th</sup>. May continued the dry weather until 13<sup>th</sup>/14<sup>th</sup> when an unstable arctic airmass produced some much-needed rain in the form of heavy, thundery showers. A total of 12.8mms/0.5in was recorded on the 13<sup>th</sup>/14<sup>th</sup> which is 28% of average. Low overnight temperatures have again caused concern for gardeners with a late air frost overnight on the 10<sup>th</sup>/11<sup>th</sup> (-0.7°C).

*Peter Mills*



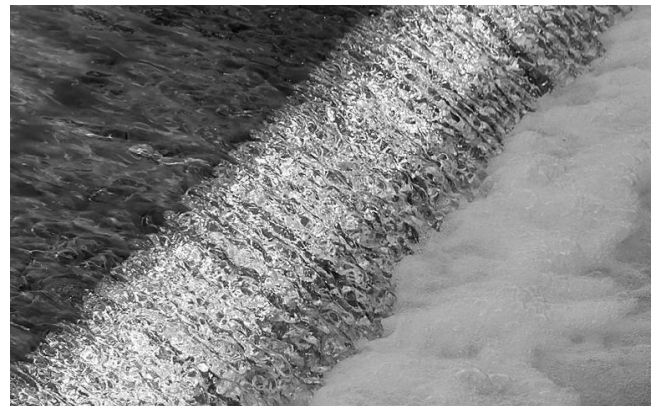
## Wroxham & District u3a

Following our AGM, we have a new Chair and Secretary to carry our growing u3a into the future.

Our new MOTO (members on their own) group has got off the ground and will be planning trips and activities for the coming year. They have a very varied programme, which includes talks, exhibitions, concerts, games and even a gong bath.

The history group went to Sheringham Museum, where the excellent curator Lisa, gave us a whistlestop tour. It is much larger than most of us realised with many exhibits of Sheringham life, apart from the historic lifeboats it is known for. There is also a wind energy display and a great view from the tower. This year's special exhibition is of three artists: John Craske, Cecil Hewitt and Tom Armes called 'The Stitcher, The Photographer and The Painter'.

The subject for the photography group was 'All that Glitters'



The Weir, Horstead Mill Picture George Ashall

Apart from our interest groups we have our general meeting monthly at Hoveton Village Hall, where we have a speaker and tea and biscuits. If you would like to know what we are about and meet some of the members, do come along, it's on the 3<sup>rd</sup> Tuesday of each month, doors open at 2pm, £2 for members and £3 for visitors, [wroxhamu3a@mail.com](mailto:wroxhamu3a@mail.com).

The next 3 meetings are as follows:

- Tuesday 16<sup>th</sup> June** Broadland Tales Judith Keogh
- Tuesday 20<sup>th</sup> July** Summer Party (no meeting at Hoveton Village Hall).
- Tuesday 18<sup>th</sup> August** Beer Sommelier Cheryl Cade (special meeting limited numbers) Party (no meeting at Hoveton Village Hall).

*Pauline Wright-Marchant*



## Wildlife Notes

As I sit and write these notes in mid-May, we have been suffering from very cold northerly winds again and the Blue and Great tits are struggling to find food for their chicks which is likely to lead to low brood survival numbers this year.



Painted Lady - Jon Kelf

A sharp contrast to the first couple of days of the month when warm southerly winds brought large numbers of Painted Lady butterflies across to the UK with smaller numbers of Large Tortoiseshell butterflies. I saw three Painted Ladies sun bathing on the path as I walked back from the boardwalk on the 2<sup>nd</sup> May. Hopefully this may lead to a second generation later in the summer.



Grasshopper Warbler/Gropper - Jon Kelf

Two years ago, I wrote about a Grasshopper Warbler which had been heard calling from a private bit of marsh in Neatishead. This bird is a small streaky, brown coloured warbler and has a distinctive call which is likened to that of a fishing line being reeled in hence the sound is known as “reeling”.

It is rather frustrating as it tends to call at dusk and dawn when the light is not great and often calls from within a patch of dense vegetation where it remains invisible. Again, this year, a Grasshopper Warbler or “Gropper” as they are known to birdwatchers, has been calling from the same piece of marsh and whilst I have heard it twice, I am yet to see it. I saw my first

Swift, Hobby and Cuckoo of the year whilst sailing on the 1<sup>st</sup> May and recorded my first Hairy Dragonfly and Common Blue Damselfly at Alderfen on the 2<sup>nd</sup>.

A flock of 13 Bee-eaters were recorded flying overhead at Lessingham on the 7<sup>th</sup> May and, whilst it was hoped that they might return to the breeding site from two years ago at Trimingham, they didn't stop and soon moved on.



Bee Eater - Jon Kelf

The exciting news for birders at the end of April was the report that a White-tailed Sea Eagle had been seen in Norfolk and on the 27<sup>th</sup> April, it was tracked flying from Happisburgh, Waxham, Lessingham and across to Stalham.



White Tailed Sea Eagle - Jon Kelf

These birds are being seen in Norfolk more frequently now following introduction schemes in the south of England, most notably on the Isle of Wight, and have bred in Sussex and on Exmoor. Many of the birds seen locally are juvenile birds as they do not reach sexual maturity until they are 5 years old so in the meantime they wander around the coastline. These birds are huge with a wing span twice the size of a Buzzard and are often described as looking like a flying barn door. The Ranworth Ospreys are currently sitting on eggs so fingers crossed that they hatch and fledge successfully. In June look out for Norfolk Hawker and Black-tailed Skimmer dragonflies and hopefully some Swallowtail butterflies.

*Jerry Simpson*

01692 630674 simpsonj24@btinternet.com



## Wherry Yacht Charter

### Wherry Yacht Charity Celebrates the Artistic Heritage of the Norfolk Wherry with Art Related Events.

For centuries, the Norfolk Wherry has been more than just a boat, it has been the artistic soul of the Broads.

The relationship between wherries and art began in the early 19th century, with members of the renowned Norwich School of Artists, such as John Crome and John Sell Cotman, frequently featuring them in landscapes as essential elements of Norfolk life. These early works captured the dramatic contrast of the black sails against the vibrant marshlands.

As the Victorian era progressed, the rise of railways saw trading wane, prompting a dramatic evolution. Enterprising captains converted their working vessels into luxurious pleasure wherries to cater to a new wave of Victorian and Edwardian tourists discovering the Broads. To ensure passengers' clothes remained clean, the tarred sails were replaced with pristine white canvas. Artists quickly gravitated to these 'white-sailed' vessels, capturing their elegance. Renowned artists like Leslie L.H. Moore, who produced iconic watercolour scenes in the early 20th century, frequently painted these leisure scenes.

By the Edwardian period, pleasure wherries, such as the famous Egyptian themed Hathor commissioned by Norfolk's Colman family and built in 1905, had become moving works of art themselves, often featuring opulent interiors. These picturesque vessels became a mainstay in art galleries, cementing the wherry as a symbol of both commercial heritage and leisure. Today, the few remaining wherries are treasured by artists, maintaining a 200-year legacy of beauty on the water.



Wherry Yacht Charter was delighted that Su Haywood returned to How Hill with her art exhibition held alongside Hathor on 23<sup>rd</sup> to 25<sup>th</sup> May. Su is a Norfolk-based multi-media artist known for her work inspired by the Norfolk landscape. Many pieces were both on display and available for sale. Su offered a unique piece as a prize to one lucky member of the public who attended the exhibition.

Those seeking a hands-on approach with their art had an opportunity to take part in an openair sketching workshop with another fine Norfolk artist, Emily Bird. Emily has always been inspired by her deep love for the Norfolk coast and countryside and her work often captures the moment when light falls perfectly upon the landscape. She will also be leading the workshop on **Monday 22<sup>nd</sup> June** on the staithe at How Hill overlooking our flagship wherry, Hathor. The event will commence at 4.30pm with tea and cake. Spaces are limited to 12 seats, cost £20 per person.

Being just a day after Fathers' Day this would form a unique gift for any budding artist. Booking is therefore essential at [www.wherryyachtcharter.org](http://www.wherryyachtcharter.org).

*Jason Birkett* Volunteer Publicity Manager



## Wroxham & Hoveton Lions Club

I hope that you are enjoying the warmer weather, despite one of the May Bank Holiday days feeling as though Winter had returned! We had a stand at the Horning Boat Show on Saturday 2nd May, which had good weather. Our stand sold items associated with boating and we also had a football skills game, with both children and adults honing their soccer skills. We had a couple of Lions distributing information about becoming a Lion.

Apart from our usual Business Meetings on the second and fourth Tuesday evenings this month does not have many events. So, it is a short article this month. However, we held another of our Jumble Sales on Thursday 14<sup>th</sup> May, at Place's Farm.

We are having Membership Display stall at Roys of Wroxham on **Saturday 13<sup>th</sup> June**. This will offer you an opportunity to find out about becoming a Lion.

We welcome enquiries about membership and look forward to seeing you there. Don't be shy, we may be Lions but we don't bite!

*Derick Bowler* PR Officer  
Wroxham and Hoveton Lions Club CIO



## Wroxham Bure Valley Rotary Club

At a recent meeting we were pleased to welcome Shaun Heard from the Norfolk Fire Service to receive a cheque for £1,000 for the Fire Service Smoke Alarm project, a contribution which included a District grant as well as funds raised by our club.

Our next big event will be our annual Charter Night, celebrating the Club's original founding, which takes place on **Monday 22<sup>nd</sup> June** followed by handover night when our new President Peter Hawes takes over at the start of the new Rotary year on 1<sup>st</sup> July.

Our next major fund raiser is our Classic Car show which takes place at Wroxham Barns. It gets bigger and better every year so although it is still a few weeks away make a note of the date now **Sunday 6<sup>th</sup> September** - and be sure not to miss it.

Our regular Monday evening meetings continue with outside visits, business meetings and a varied programme of speaker meetings, all at Wroxham Barns. Please let us know if you fancy coming along. You can also support us and the many local and international charities we donate to, through the Broadland Council Lottery Scheme simply go online at [www.communityatheartlottery.com](http://www.communityatheartlottery.com) and sign up, selecting Wroxham Bure Valley Rotary Club as your chosen cause – or you can support us directly by visiting our page on the [www.totalgiving.co.uk](http://www.totalgiving.co.uk) web site. If you would like to join us for a vibrant, sociable, active, and fun club experience, please contact our president, Chris Billing, on 07555 171574.

*Peter Milsted*



## Twining

After our committee meeting in May, we think we are pretty ready for our 44 French guests who are with us in August. We have a good programme of events; reception at Broadland School, visit to Cromer, river trip from Wroxham, games and dinner dance at Hoveton Village Hall, gin and rum distillery tour etc. Our hosts also have a free day to entertain their friends so, I expect other local attractions will benefit from their visit.

A date for diaries is Friday 24<sup>th</sup> July for pre-visit briefing and social evening in Wroxham to which all members are invited, hosting or not, our usual bring-a-plate buffet. All members will also be able to participate in events during the August visit and will get details about them soon.

One of our members has also kindly offered to set up a Facebook Page for us so look out for that to learn more about our friendly group and what we do. It's so nice to be in contact with other countries and cultures in this rather fractured world of ours at the moment.

In May our book group read "The Mystery at Rake Hall" by Maureen Paton chosen by Marie. We are still using Zoom for our distant and less able members but hopefully will have a get-together or two over the

summer, as we all enjoyed our lunch at Fizz and Fromage in March. Some of our Twinning members also benefit from French Conversation there, at Fizz and Fromage, on Thursdays 2.30-4.00pm.

Pat can supply more information on 07879 454052 or [pat.barkergreen@btinternet.com](mailto:pat.barkergreen@btinternet.com). For more general information, please contact our chairperson, Peter, on 01603 782733 or [peter\\_c\\_milsted@talk21.com](mailto:peter_c_milsted@talk21.com).

*Shelia Milsted*



## Wroxham & Hoveton United Reformed Church

Do join us for any or all of the following services:

**Sunday 7<sup>th</sup> June** 10.30am. Service including Holy Communion.

**Sunday 14<sup>th</sup> June:** 10.30am

**Sunday 21<sup>st</sup> June** 10.30am

**Sunday 28<sup>th</sup> June:** 10.30am

Minister: Rev Tina Wilson, 07763 354740. email: [revtinawilson@outlook.com](mailto:revtinawilson@outlook.com)

**JAM** JAM (our Sunday School) welcomes all children aged 4 to 16. In our sessions we watch, read, listen, discuss, play, act, sing, chat, pray, cook, create and have a great time. We meet regularly in the church hall from 10.15–11.45am.

For information on future sessions and other events please go to: <https://wroxhamurc.org.uk/jam> or more details contact [jam@wroxhamurc.org.uk](mailto:jam@wroxhamurc.org.uk) or call Chris on 01603 783992.

The Community Café meets for coffee and cakes from 10.30am to 12 noon on Thursdays. All are welcome, there is no charge. We look forward to seeing friends old and new. 01603 738835

*Lynne Howard*  
[secretary@wroxhamurc.org.uk](mailto:secretary@wroxhamurc.org.uk)

## Roman Catholic Churches

- St Helen, Hoveton, NR12 8QJ. Saturday Mass at 5.30pm, Wednesday Mass at 9.30am.
- Sacred Heart, Norwich Road, North Walsham, NR28 9JP, Sunday Mass at 11am

For more information: 01692 403258

Fr Alan Hodgson [alan.hodgson@rcdea.org.org.uk](mailto:alan.hodgson@rcdea.org.org.uk).

Secretary [rcnwaltham@gmail.com](mailto:rcnwaltham@gmail.com).



# Sudoku Time!

A special mention for year 6 who began their SATS exams in the middle of May well done to all those children:

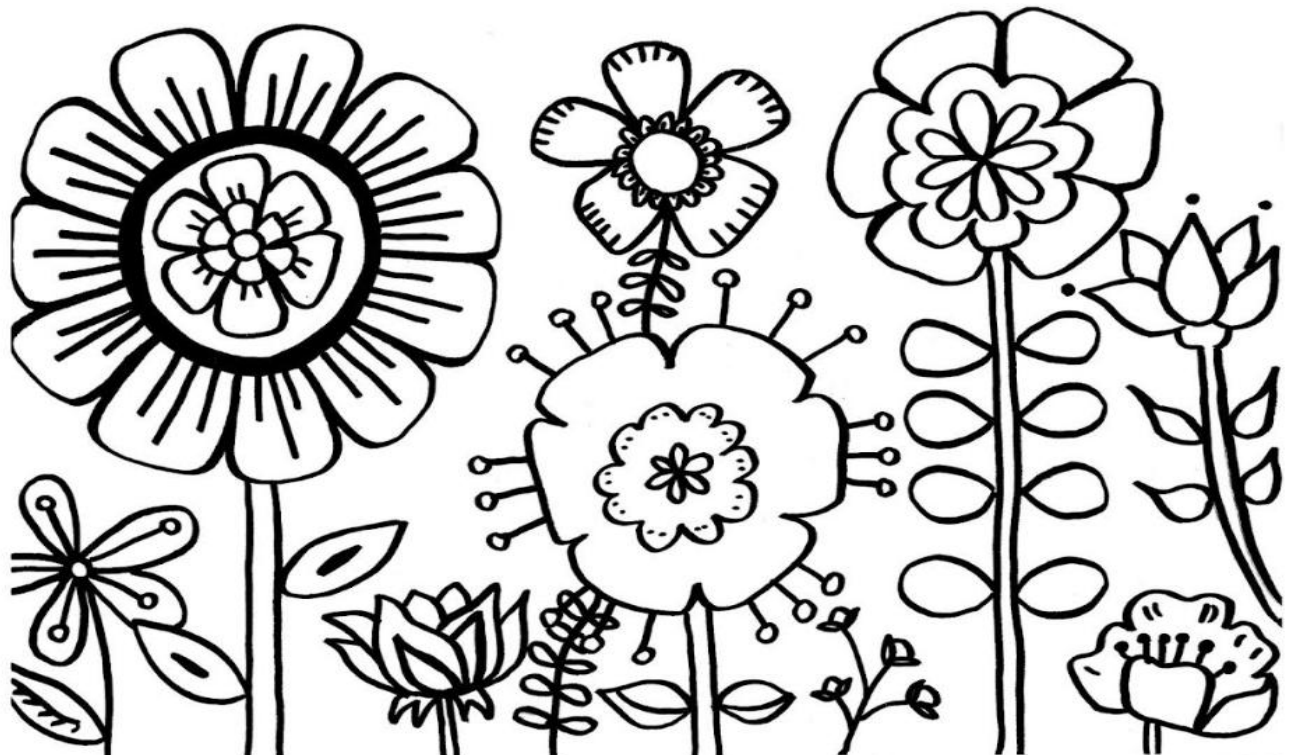
**Annabelle, Cecily, Charlotte, Daisy, Frances, Jude, Kim, Lily, Logan, Lucie, Mathilda, Poppy. Samuel.**

<b>3</b>			<b>1</b>
<b>1</b>			
	<b>1</b>	<b>2</b>	<b>3</b>

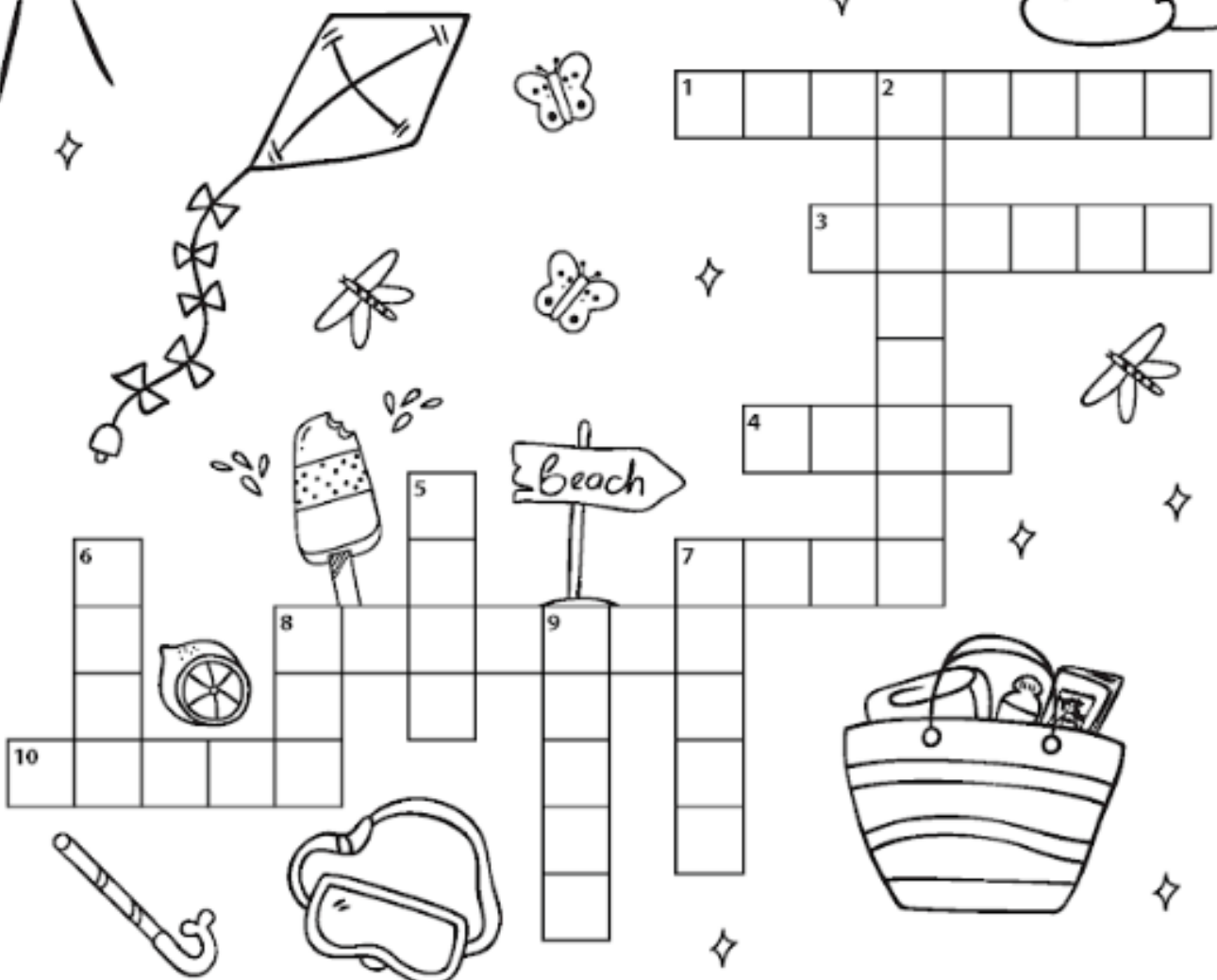
			<b>2</b>
	<b>2</b>		
	<b>3</b>		<b>4</b>
	<b>1</b>	<b>2</b>	

		<b>3</b>	
<b>2</b>	<b>3</b>		
<b>1</b>			
<b>3</b>			<b>4</b>

		<b>1</b>	<b>2</b>
<b>2</b>			
			<b>4</b>
<b>4</b>	<b>3</b>		



# SUMMER CROSSWORD



## ACROSS

1. Frozen treat enjoyed on a stick.
3. Moves your canoe or kayak through the water.
4. Move through the water using arms and legs.
7. Swims through lakes, rivers, or the sea.
8. Helps you breathe while swimming underwater.
10. Small yellow fruit with a sour taste.

## DOWN

2. Sea creature shaped like a star.
5. Place to swim and splash in the summer.
6. Flies high when the wind blows.
7. Keeps you on top of the water.
8. Bright light and warmth from the sky.
9. Small boat moved with a paddle.



## **June 2026 Adverts**

**EAST ANGLIAN TANKERING SERVICES** a local cesspool and septic tank disposal service, also blocked drains cleared. Smallburgh based. Tel 07988 020984 / 07988 406305  
[www.eatankering.co.uk](http://www.eatankering.co.uk).

**COUNTRY HOME HEATING** Oftec & Gas safe® heating engineers, oil, gas & Lpg servicing breakdown & installation throughout the villages. Please call us on 01493 749010 or 07899 014797.

**M STUDIO HAIRDRESSING** at Ikens, Smallburgh Road, Barton NR12 8AP. Please call Maz 01692 630744.

**YOGA CLASSES** with Clare Badham at New Victory Hall, Wednesdays 18.15-19.45, more details at [www.yogabreeze.co.uk](http://www.yogabreeze.co.uk) or call/text 07557 353723.

**GARDENER:** weeding, pruning, clearing, mowing. Please contact Rosie for availability 07584 345320.

**ANTHONY HOWARD & SON** – kitchens, bathrooms, wet rooms, and. all plumbing, tiling, plastering, carpentry etc. Please call Anthony on 07954 224216.

**PROFESSIONAL PAINTER & DECORATOR** Call Steven Luxford on 07786 510558 and see also: <https://www.facebook.com/SLneatpaint/>.

**RIVER OF BEAUTY** at Womack Staithe, Ludham. For beauty, massage, skin care products and holistic treatment. Please contact Carrie on 07938 016363.

**DEE'S PERSONAL SUPPORT**– personal care, social support, shopping & cleaning. For more information contact Denise on 07969 636826 or [dee4addy@gmail.com](mailto:dee4addy@gmail.com).

**THE MOWER DOCTOR** for garden machinery, service and repairs. On site repairs and servicing meaning reduced machinery downtime. Stalham based. Please call Rob 07799 530015 or 01603 291927.

**A R PAYNE** - for all your local painting and decorating needs. Over 35 years' experience within the building trade. Please contact Andy on 07706 991443 or [andy Payne.ap@gmail.com](mailto:andy Payne.ap@gmail.com).

**CHIMNEY SWEEP** Mike Wicks & Son. Fully insured. Certificate issued. Please call either 01692 536592 or 01603 387400

**GARDEN BIRD FEED** Free delivery of seed mixes, peanuts, sunflower, fat balls, mealworms and more! Please contact us on 01493 740288 or visit our website at [gardenbirddirect.co.uk](http://gardenbirddirect.co.uk).

**ML RENOVATIONS LTD** specialising in Oak Framed Buildings, Small Extensions, Patios, Groundworks, Garden Maintenance and Fencing. Call Andrew to discuss your project on 07880 700636 or email [info@mlrenovations.co.uk](mailto:info@mlrenovations.co.uk).

**GLEAMING GUTTERS** Gutter cleaning and washing, plus washing of fascias, soffits, barge boards etc. Conservatory cleaning & pressure washing to patios, paths etc. Free friend quote. Lance 07771 363702 or 01603 782112.

**COLIN the PLUMBER** oil, gas, and electric boilers and oil tanks. All types of plumbing services. Please call Colin on 01692 670657 or 07990 650331.

**GARDENER** lawn cutting service and general garden maintenance. Please contact Lenny on 07771 363702. Locally based.

**SAM THE LADY SWEEP** Wood burners, agas etc. Guild of Master Sweeps trained. NVQ qualified. Please call Sam on 07835 476106, [www.samtheladysweep.co.uk](http://www.samtheladysweep.co.uk).

**YOUR FRIENDLY LOCAL ELECTRICIAN** Glen Rogers Electrical. From an electric shower to a garden light. Give us a ring on 07774 103426.

**SIMON'S HOME IMPROVEMENTS** We design, supply & fit kitchens, bathrooms, tiling, carpentry, flooring, plumbing and much more. Please contact Simon at [simons.kitchens1990@gmail.com](mailto:simons.kitchens1990@gmail.com) or on 07368 982830.

**INTERIOR ACCENTS SOFT FURNISHINGS** - Made to measure curtains, blinds, loose covers, cushions etc. Selection of fabrics, poles & tracks. Please contact Debbie 07799 031933 or email [enquiries@interioraccents.co.uk](mailto:enquiries@interioraccents.co.uk).

**GRASS CUTTING** also pruning, shed and fence painting and garage/shed sorting. Light garden tasks. Please call Carol on 01692 630478 or mobile 07879 442860.

**INDEPENDENT FINANCIAL ADVICE** Wills & Power of Attorneys, Probate and Executor Service, very competitive rates to local residents. Home Visits available or at Hoveton office. Call Martin Smith on 01603 273590 or 07584 030071.

**INEXPENSIVE MOORINGS** available at Barton Turf Staithe, please ring Martin 07501 622068.

**MARINE ELECTRICIAN** 35 years' experience. Installation, fault finding, repairs & spares. Fully insured. Please phone Steve on 07958 679118.

**NORFOLK FOOT MOBILE HEALTH CARE** Routine care, diabetic foot care, corns and callus, verrucae and fungal nails. Please call Richard Parnell Dip FH BSc Econ Hons 07766 167562.

**C&B GARDEN SERVICES** for Garden Maintenance and Pest Control, specialising in wasps and moles, rabbits & squirrels etc. For FREE quote please call Clive 01692 538356 or 07867 632572.

**LANCE BUCKINGHAM CARPENTRY** all building work undertaken, incl kitchen fitting, extensions, roofing, fencing, cart sheds, hanging doors & bespoke carpentry, decking & maintenance. 01603 720229/07795 210522, [lance@lb-carpentry.co.uk](mailto:lance@lb-carpentry.co.uk).

**ROOF REPAIRS** scaffolding, flat roofs, pitched roofs & chimney repairs. Also fascias & gutters. All high-level maintenance work undertaken. Ring Leighton for a quote or advice 07766 563513.

**COMPUTERS:** friendly IT Tuition and Support. Please contact Jamie on 07747 450776 or [jamienickerson@live.co.uk](mailto:jamienickerson@live.co.uk).

**GARDEN MAINTENANCE SERVICES:** Mowing, hedges trimmed, raised beds, fences, patios, outdoor covered spaces & more: all projects considered. Please call Craig on 07535 044198.

**KC WASTEWATER** Service and repairs to all make of domestic sewage treatment plants. Over 30 years' experience, Felmingham based. Please call Keith on either 01692 402747 or 07975 620630. See also website [www.kcwastewater.co.uk](http://www.kcwastewater.co.uk).

**LOGS FOR SALE** barn stored, seasoned firewood, delivered locally. £185 a full load, £95 a half load. Please contact Jamie on 07747 450776 or [jamienickerson@live.co.uk](mailto:jamienickerson@live.co.uk).

**MDEC** Looking to freshen up your space? MDEC delivers clean lines and meticulous attention to detail - all from skilled female decorators blending style with comfort. Friendly, Professional, Reliable. Contact us on 07866 726178 or at [www.mdec.me](http://www.mdec.me).

**PAINTING & DECORATING** by Chris Ryan. Prompt and professional. Free quotation. 01692 631194 or 07758 127983.

**OLD MILL GARAGE** 01692 536926

**CHIMNEY SWEEP** Member of guild of master sweeps. Fully insured. Clean and efficient. All work certificated. All solid fuel appliances. Call Harry on 07799 484012 or 01263 833362.

**BARTON REED PANEL FENCING** - handmade reed panels and screens. All types of fencing work undertaken. Please contact Jon on 07881 717692, email at [jon.moore61@btinternet.com](mailto:jon.moore61@btinternet.com) or see [bartonreedpanelfencing.co.uk](http://bartonreedpanelfencing.co.uk).

**PLATTEN PEST CONTROL** specialising in the management of wasps, rats, mice, moles, and rabbits. Free survey. Please contact us on 01692 631173 or 07711 391839.

**REGENCY GUEST HOUSE, GIFT SHOP & PICTURE FRAMING** - The Street, Neatishead, NR12 8AD. Please contact us at 07790 011098, 01692 630233 or [regencyhouse1786@gmail.com](mailto:regencyhouse1786@gmail.com).

**All contributions are welcome to The NIB:** please note the Team reserves the right to amend or omit items. As the magazine runs from 1<sup>st</sup> of the month, events in the previous month will not be advertised. Views expressed are those of the named author. No responsibility can be accepted for any content or errors. Everybody who submits articles or adverts, automatically consent to having their details published on the Internet, unless specifically requested otherwise, in which case we will endeavour to omit details before uploading onto the churches' websites.

#### **NEW ADVERTISEMENTS**

- £1.50 a line, maximum five lines.
- Please contact us at [nibadverts@gmail.com](mailto:nibadverts@gmail.com) or phone Sue Clayton on 07850 436211.



#### **Defibrillator Locations**

##### **Neatishead -**

New Victory Hall, NR12 8AD  
The Granary Business Park, School Rd NR12 8BU

**Cangate -** Cangate House, NR12 8YH

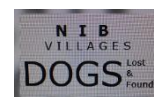
##### **Barton Turf -**

Point Farm (barn wall) NR12 8BB  
Cox's Boatyard toilet block NR12 8AZ

**Irstead -** Staithe Car Park, NR12 8XS

##### **Pennygate -**

Berry Hall Lodge (left of gate) NR12 8BE



#### **Dogs – and Cats - Lost and Found**

We have expanded the group to include cats too! If you would like to be included in this WhatsApp group which aims to reunite lost dogs, or cats, with their owners, please let me know.

*Sue Clayton*, Editor 07850 436211  
[nibeditor1@gmail.com](mailto:nibeditor1@gmail.com)

#### **Magazine Team for February 2026 – December 2026**

News & dates: Christine Breden (Editor) - 07510 224490 - [nibeditor1@gmail.com](mailto:nibeditor1@gmail.com)

Dates: Sue Clayton (Deputy Editor) - [nibdeputyeditor1@gmail.com](mailto:nibdeputyeditor1@gmail.com)

Adverts: Sue Clayton (Manager) - 07850 436211 - [nibadverts@gmail.com](mailto:nibadverts@gmail.com)

NIB Postals: Jane King (Deputy Manager) - 01692 630002 - [janeelizabethking@hotmail.com](mailto:janeelizabethking@hotmail.com)

NIB Kids: Georgina Grocott - 07900 411103 - [nibskids12@gmail.com](mailto:nibskids12@gmail.com)

NIB Treasurer: Mandy Parks - 07547 697010 - [nibfinancials@gmail.com](mailto:nibfinancials@gmail.com)

Social Media: Margaret Maxwell - 07460 740700 - [margaretemmamaxwell@yahoo.com](mailto:margaretemmamaxwell@yahoo.com)

#### **DEADLINE FOR THE JULY EDITION – 14<sup>th</sup> June 2026**

Printed by Century Printing in Stalham

## Diary dates for June 2026

Mon	1 <sup>st</sup>	7pm for 7.30pm	Village Screen, NVH: "Hamnet"
Sat	6 <sup>th</sup>	2-4pm	Barton & Irstead Church Fete, Barton Hall
Mon	8 <sup>th</sup>	2pm	Horning Flower Club, Horning Village Hall
Tue	9 <sup>th</sup>	6pm	Evening Heritage Walk, NIBCHG (see page 5)
Wed	10 <sup>th</sup>	7-9pm	Knit and Stitch, Dolly Newcombe Community Room, NVH
Thur	11 <sup>th</sup>	10am	Friends & Neighbours coffee morning with Sue Seeley NVH
Sat	13 <sup>th</sup>	9am-noon	Community Market and Café, NVH
Sat	13 <sup>th</sup>	10-noon	International Knit in Public – White House Stores/Regency Guesthouse
Sat	13 <sup>th</sup>		Wroxham and Hoveton Lions club membership Stall at Roys
<b>Sun</b>	<b>14<sup>th</sup></b>	<b>NOTE</b>	<b>Deadline for the July NIB Edition: Sunday 14<sup>th</sup> June</b>
Sun	14 <sup>th</sup>	10am	Open Aussie Pairs Tournament, Neatishead Bowls Club
Mon	15 <sup>th</sup>	7.30pm	Garden Club – "Wildlife in your Garden & Global Warming", NVH
Tue	16 <sup>th</sup>	2pm	u3a "Broadland Tales", Hoveton Village Hall
Wed	17 <sup>th</sup>	10.10am 11.15am	Mobile Library: Pitt Corner, Neatishead NR12 8BT Mobile Library: Council Houses, Ashmanhaugh NR12 8YL
Wed	17 <sup>th</sup>	2pm	WI, NVH
Sat	21 <sup>st</sup>	10-noon	Barton Turf Church Coffee morning
Mon	22 <sup>nd</sup>	4.30pm	Wherry Yacht Art Workshop at How Hill (limited spaces) (see page 9)
Wed	24 <sup>th</sup>	10.15am 10.35am 10.55am	Mobile Library, Pennygate, Barton Turf NR12 8BE Mobile Library, Ex-Post Office, Barton Turf NR12 8BB Mobile Library, Staithe Road, Barton Turf NR12 8AZ
Wed	24 <sup>th</sup>	7-9pm	Knit and Stitch: Dolly Newcombe Community Room: NVH
Thur	25 <sup>th</sup>	10am	Friends & Neighbours Summer Bingo NVH
Sat	27 <sup>th</sup>	10-11.30am	Hope Café: Neatishead Baptist Church Chapel Road NR12 8YF
Mon	29 <sup>th</sup>	7pm	Neatishead Community Gym AGM, NVH

**Future Dates and Events** - see future NIBS for further details of these events:

June 22<sup>nd</sup>-28<sup>th</sup>: Broad Arts exhibition 'Seas the Day', Cromer see Mays NIB for details

Monday 6<sup>th</sup> July: Village Screen – 'Song Sung Blue'

Friday 10<sup>th</sup> July: FONS Rodeo Round-Up

Saturday 18<sup>th</sup> July – Wroxham Library launches Summer Reading Challenge

Monday 20<sup>th</sup> July – Garden Club & NIBCHG present Farming in a Bygone Age, NVH

Monday 3<sup>rd</sup> August: Village Screen – 'Wuthering Heights'

Sunday 6<sup>th</sup> September – Rotary Classic Car Show, Wroxham Barns.

Saturday-Sunday 19<sup>th</sup>-20<sup>th</sup> September: St Peter's Church Celebration

### Local Services and Contact Details

- New Victory Hall: Street Hill, Neatishead, Norfolk, NR12 8A. For enquiries/hall bookings [www.victoryhall.info](http://www.victoryhall.info) or email [bookings@victoryhall.info](mailto:bookings@victoryhall.info) tel:07551 008065. Online ticket sales for events and cinema, order these via Red Box link
- White House Stores Community Shop: Irstead Road, Neatishead NR12 8BJ, 01692 631549. To join the Community Shop Membership: [info@whitehousestores.co.uk](mailto:info@whitehousestores.co.uk)
- White Horse Inn: The Street, Neatishead, NR12 8AD, [thewhitehorseinnneatishead.com](http://thewhitehorseinnneatishead.com)
- Wroxham Library: 01603 782560; <https://www.facebook.com/WroxhamLibraryNorfolk/>  
Weekdays 10am-7pm, Saturday 10-4pm. Many exciting, interesting and interactive things to do. Groups for all ages- not just reading! See their Facebook pages for full details: many interesting things to do and join.

### Parish Council Clerks:

Barton & Irstead: Nicola Ledain, [bartonturfirsteadpc@yahoo.com](mailto:bartonturfirsteadpc@yahoo.com) Meet monthly 3<sup>rd</sup> Thurs 7.30pm NVH.

Neatishead: Laura Bateman [clerk@neatisheadpc.norfolkparishes.gov.uk](mailto:clerk@neatisheadpc.norfolkparishes.gov.uk)

## Benefice of St Benedict - Church Services – June 2026

### Sunday 7<sup>th</sup> June: First Sunday after Trinity

- 9.30am Benefice Holy Communion at St Peter's Church, Neatishead

### Sunday 14<sup>th</sup> June: Second Sunday after Trinity

- 9.30am Benefice Holy Communion at St Swithin's, Ashmanhaugh

### Sunday 21<sup>st</sup> June: Third Sunday after Trinity

- 8am Holy Communion Book of Common Prayer at St Michael's, Irstead
- 11am Holy Communion at St Benedict's, Horning
- 11am Sunday Club at St Peter's Church, Neatishead
- 6pm Evening Prayer at St Michael & All Angels', Barton Turf



### Sunday 28<sup>th</sup> June: Fourth Sunday after Trinity

- 9.30am Morning Prayer at St Bendict's, Horning
- 9.30am Holy Communion at St Michael's, Irstead
- 11.00am Holy Communion at St Michael & All Angels', Barton Turf

### Weekday Morning Prayer Services in our Benefice churches at 9.15am\*

- Monday: Neatishead (3<sup>rd</sup> Mon HC)                      Tuesday: Irstead  
 Wednesday: Horning                                      Thursday: Barton Turf  
 Friday: Ashmanhaugh\* NB at 9.45am:

Contact Pauline Simpson on 07818 599303

### Parish Church Wardens

- Neatishead – Pauline Simpson on 01692 630674  
 Barton Turf – Barbara Pilcher on 01692 536132  
 Ashmanhaugh – Anne Mulhall at [anne.mulhall1@btinternet.com](mailto:anne.mulhall1@btinternet.com)  
 Horning – Christine Hewitt at [christine.hewitt@hotmail.co.uk](mailto:christine.hewitt@hotmail.co.uk)  
 Irstead – Pauline Simpson on 07818 599303

### Christian Aid Ecumenical Service (late update)

Thank you to all those who joined us to hear the story of Fidah in Kenya who is able to grow vegetables in a tiny space between the houses in Nairobi to feed her family and to sell the surplus. With the addition of Gift Aid, we raised £696.

*Sue Gibbons, Co-ordinator*

### Neatishead Baptist Church - Chapel Road, Neatishead, NR12 8YF

Sun 7 <sup>th</sup> June	10.30am	Tom Madder's - Communion	Sun 21 <sup>st</sup> June	10.30am	Val Khambatta
Fri 12 <sup>th</sup> June	10am	Prayers	Sat 27 <sup>th</sup> June	10am	Hope Café
Sun 14 <sup>th</sup> June	10.30am	Helen Vintner	Sun 28 <sup>th</sup> June	10.30	Tom Madders
Mon 15 <sup>th</sup> June	2pm	Fellowship Meeting studying Mark's Gospel			

Hope Café meets for coffee, games, etc - 10am to 11.30am on the last Saturday of the month.

Everyone is welcome for a bit of fun and fellowship.

Fellowship Meetings 2.00 pm

Prayer Meeting 10am in church.

Please contact the Secretary for more details.

Secretary: Sue Gibbons [secretary@neatisheadbaptistchurch.org.uk](mailto:secretary@neatisheadbaptistchurch.org.uk)