

# TROWSE VILLAGER



## WHY CROWN POINT? PART 2 HIDING IN PLAIN SIGHT



SUMMER  
2026

**St Andrew's Parish Church – Trowse Newton**  
**Facebook.com/@StAndrewsChurchTrowse**

<b>Vicar:</b>	<b>The Revd Rosemary Braby</b> [revrosietrowse@gmail.com] <b>07719709600</b>	
<b>LLM (Reader):</b>	Chris Sanham readertrowse@gmail.com] 078010823149	
<b>Churchwardens:</b> standrewswardens@outlook.com	James Braby	07719661976
	Sarah Toothill	07920387655
<b>Church Treasurer:</b>	Cathy Harvey	01508 499126
<b>Organist:</b>	Meryl Dempsey	
<b>Church Flowers:</b>	Sarah Toothill Cathy Harvey	
<b>Facebook:</b>	<a href="https://www.facebook.com/StAndrewsChurch/?ref=page_internal">https://www.facebook.com/StAndrewsChurch/?ref=page_internal</a>	
<b>Web</b>	<a href="#">St Andrew's Church, Trowse - A Church Near You</a>	

**The TROWSE VILLAGER is a quarterly publication.**

**The next edition will be Autumn 2026.**

**Closing date for copy to be included is 21st August 2026**

*All letters, articles and other contributions for the next edition of The Trowse Villager should be emailed to **newtrowsevillager@gmail.com** or handed in at the church.*

**Anyone wishing to advertise in the Trowse Villager please send enquiries to: **newtrowsevillager@gmail.com** or phone **07719661976****

**Products and services advertised in this publication are not necessarily endorsed by the Editorial team.**

**Articles do not necessarily express the view of the Church or the Editorial team.**

## Rosie's Ramblings – Summer 2026

I'm writing these Ramblings on the hottest May day on record in the UK, with the temperature set to rise to 33°. In fact I was already enjoying (?) this level of heat a month ago when we were on holiday in North Carolina. It's perfectly normal there, and all the buildings have air-conditioning – thank goodness!

We had a wonderful two weeks with Susie and Shawn, eight-year-old Rhys and six-year-old Annabelle. I hated saying goodbye, knowing that the children will be another year older next time we're together.

However, I'm grateful that we are able to go to see them, or they can come and see us; and in the meantime we can keep in touch via WhatsApp.

It's hard having one's family living in America (I might add – under the present administration – but the less said about that the better.) A couple of years ago, Susie became a US citizen. The criteria for citizenship being granted include being “a person of good moral character.” I'm sure the irony of that will not be lost on you, dear reader. Shortly before our holiday, Susie was called upon to perform jury service, which she did. She found it quite difficult and traumatic, as the case involved a double attempted murder (shooting) and possible mental health issues. I couldn't help thinking it might not have happened in a country with sensible restrictions on gun ownership.

Susie received a handwritten card which she displayed on her mantelpiece. The judge who presided over the case simply wrote: “Dear Ms G., Thank you for your jury service. Our system would not work without people like you. All my best, B.C.” I found that really impressive. The judge could just have got his P.A. to send an email, but to write by hand to each juror takes some effort and makes the thanks seem much more genuine – and I'm sure it was genuine because the handwriting was pretty dire!

Despite the worldly and personal difficulties and sometimes tragedies that we have to contend with, we have much to be thankful for. Viktor Frankl famously said that the last of the human freedoms is to choose one's attitude in any given set of circumstances. I don't think we can do better than to cultivate an attitude of gratitude - giving thanks “in all times and in all places”, as we say in our service of Holy Communion every Sunday. We just held our Annual Church Meeting, which involved giving thanks to many people for all that they do. I feel truly blessed to be vicar of St Andrew's, a welcoming, inclusive church. Our services and events are listed in this magazine; we look forward to seeing you.



### **OPEN CHURCH WEDNESDAYS**

**The church is open on Wednesdays from 11.00 am to 2 pm.**




**Everyone is welcome to call in for a chat and a coffee,  
to say a prayer and light a candle, and find a listening ear.**

**Relaxation and Quiet Meditation at 1.30 pm.**

# CHURCH SERVICES AND EVENTS

## FROM JUNE TO AUGUST (and a bit of SEPTEMBER)

Sunday 7 <sup>th</sup> June First Sunday after Trinity	10.45 am 3.00 pm	Holy Communion Afternoon Service
Saturday 13 <sup>th</sup> June	10.00 am – 12 noon	Let's Explore the Wild! Make exciting discoveries in the churchyard.
Sunday 14 <sup>th</sup> June Second Sunday after Trinity	10.45 am	Holy Communion
Saturday 20 <sup>th</sup> June	12 noon – 2pm	
Sunday 21 <sup>st</sup> June Third Sunday after Trinity	10.45 am	Holy Communion
Saturday 27 <sup>th</sup> June	2 pm	Dan and Laura's Wedding  
Sunday 28 <sup>th</sup> June Fourth Sunday after Trinity	10.45 am	Holy Communion
Saturday 4 <sup>th</sup> July	2 pm	Sam and Hannah's Wedding  
Sunday 5 <sup>th</sup> July Fifth Sunday after Trinity	10.45 am 3.00 pm	Holy Communion Pet Service  
Sunday 12 <sup>th</sup> July Sixth Sunday after Trinity	10.45 am	Holy Communion
Saturday 18 <sup>th</sup> July	12 noon – 2pm	

Sunday 19 <sup>th</sup> July Seventh Sunday after Trinity	10.45 am	Holy Communion
Saturday 5 <sup>th</sup> July	3.00 pm	Afternoon tea  with Spanish Guitar music played by Peter Turrell 
Sunday 26 <sup>th</sup> July Eighth Sunday after Trinity	10.45 am	Holy Communion
Sunday 2 <sup>nd</sup> August Ninth Sunday after Trinity	10.45 am 3.00 pm	Holy Communion Afternoon Service
Saturday 8 <sup>th</sup> August	6.00 pm	Concert in Memory of Gillian 
Sunday 9 <sup>th</sup> August Tenth Sunday after Trinity	10.45 am	Holy Communion
Sunday 16 <sup>th</sup> August Eleventh Sunday after Trinity	10.45 am	Holy Communion
Sunday 23 <sup>rd</sup> August Twelfth Sunday after Trinity	10.45 am	Holy Communion
Sunday 30 <sup>th</sup> August Thirteenth Sunday after Trinity	10.45 am	Holy Communion
Sunday 6 <sup>th</sup> September Fourteenth Sunday after Trinity	10.45 am 3.00 pm	Holy Communion Afternoon Service
Saturday 12 <sup>th</sup> September	All day	Sponsored Bike Ride/Stride  in aid of Norfolk Churches Trust

## Trowse with Newton Parish Council And the Manor Rooms

Information about the Parish Council, and the village, can be found on our website <https://trowseparishcouncil.norfolkparishes.gov.uk>.; in our notice boards (by the bus stop on The Street, and the junction with Kirby Rd) and on our Facebook page ([Trowse with Newton Parish Council](#)). You can contact our Clerk, Kate Leggett, on 07899798853 or by e-mail [trowsepc@outlook.com](mailto:trowsepc@outlook.com).

### Councillors, and Committee membership details

Councillor	e-mail	Committee(s)
Heather Bowers (Chairperson)	<a href="mailto:hbowers@trowse-pc.co.uk">hbowers@trowse-pc.co.uk</a>	Personnel & Comms, Finance, Manor Rooms
Paul Greenizan		Personnel & Comms (Chair)
Ann Greenizan		Open Spaces
Morgan Haynes		Open Spaces, Manor Rooms
Duncan Price		Personnel & Comms
Jordon King	<a href="mailto:jking@trowse-pc.co.uk">jking@trowse-pc.co.uk</a>	Finance (Chair)
Guy Owen (Vice Chair)	<a href="mailto:gowen@trowse-pc.co.uk">gowen@trowse-pc.co.uk</a>	Finance, Open Spaces
Clive Cartner	<a href="mailto:ccartner@trowse-pc.co.uk">ccartner@trowse-pc.co.uk</a>	Finance, Manor Rooms
<b>Volunteers</b>		
Marion Catlin		Manor Rooms
Antonia Coonan		Manor Rooms
Leesa Barrell		Manor Rooms
Chris Bowers		Manor Rooms
Lee Barrell		Manor Rooms
Peter Schindler		Manor Rooms
Contact info	<a href="mailto:trowsemanorrooms@gmail.com">trowsemanorrooms@gmail.com</a>	<b>07344 503111</b>

Clerk - Kate Leggett. Contact [trowsepc@outlook.com](mailto:trowsepc@outlook.com); 07899798853.

**The Manor Rooms** – our Village Hall, has returned to the management of the Parish Council. Building works should commence in the coming weeks / months, starting with the gable ends of the building. Further remedial works are planned for the future, into next year (and beyond). A committee, to undertake the day to day management of the Hall and lead on matters pertaining to the building, comprises Councillors and Volunteers. If anyone has any ideas for events, and / or is interested in assisting with events please contact our Clerk or a member of the Committee (by e-mail [trowsemanorrooms@gmail.com](mailto:trowsemanorrooms@gmail.com) or phone 07344 503111). The website <https://www.trowsemanorrooms.org.uk> provides information about activities and events taking place, and how to hire the building and garden.

All meetings are held monthly in the Manor rooms (The Street), and are open to the public.

**Personnel & communications, Open spaces & Property**, on the 2<sup>nd</sup> Monday of the month,

**Finance and Full Council** on 3<sup>rd</sup> Monday.

**A new Committee for the management (operations and building) of the Village Hall (Manor Rooms)** will take place on the 2<sup>nd</sup> Tuesday of the month.

### 2026 Committee meeting dates

#### Personnel & Comms (18:30), Open Spaces & Property (19:15)

			8 <sup>th</sup> June	13 <sup>th</sup> July
August - none	14 <sup>th</sup> Sept.	12 <sup>th</sup> Oct.	9 <sup>th</sup> Nov.	14 <sup>th</sup> Dec.

#### Full Council meetings – (19:15), Finance (18:30)

			15 <sup>th</sup> June	20 <sup>th</sup> July
August - none	21 <sup>th</sup> Sept.	19 <sup>th</sup> Oct.	16 <sup>th</sup> Nov.	21 <sup>th</sup> Dec.

#### Manor Rooms, Operations, and building (19:30)

			9 <sup>th</sup> June	14 <sup>th</sup> July
August - none	15 <sup>th</sup> Sept.	13 <sup>th</sup> Oct.	10 <sup>th</sup> Nov.	15 <sup>th</sup> Dec.

You may be interested in .....

**Multiple Use Games Area** – Following the concerted effort of volunteers, over recent weeks, we have established that the surface of the MUGA could be brought back in to use. We are in talks with Crown Point estate (the owner) as to how this could be progressed. An inspection has taken place and we are in the process of obtaining costings.

**Biodiversity** - The Green Team Volunteers need help in spring and summer keep the weeds in check in the cemetery. Please come and help if you can on the weekend 20/21st June. The Green Team will be there from 10am to 4pm and the Wheelbarrow Cafe will be in attendance for refreshments.

### SUMMER VIBE 26



Following on from last year we will be holding Summer Vibes 26 on Saturday 1st August.

There are lots of things planned, with music from local bands and soloists, and a collection of craft stalls For details see monthly Newsletter.

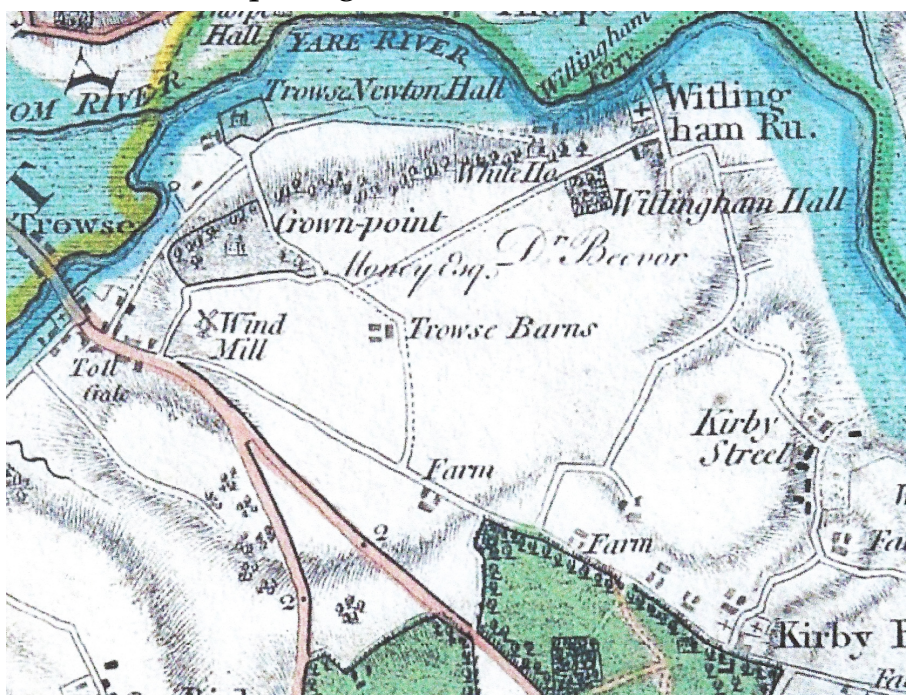
Our monthly newsletter is delivered to households in the village and can also be found on our website, in notice boards and in the Manor rooms. We rely on a Team of volunteers to do this, so if you're interested in helping please let Kate know.

## Why Crown Point?

### Hiding in Plain Sight: a portrait of John Money of Trowse

2026 is the 250<sup>th</sup> anniversary of the US War of Independence. In the Spring issue we left the story with the loss of fort Crown Point and the disastrous British defeat at the Battle of Saratoga on 16<sup>th</sup> September 1777 when both General John Burgoyne and Captain John Money were captured by the American colonists. As senior officers they were both allowed to return to England, whereas the British troops were imprisoned in America for the duration of the war. It was known that John Money of Trowse was a local commemorated military figure, fearless in battle. He had joined the army as a Light Dragoon, famous for agility on lighter horses and armed combat on foot in Europe, rapidly promoted to Captain in 1770 (9<sup>th</sup> Norfolk Regiment of Foot) and then to Major in 1781 after his return to England.

A recent donation of press cuttings to the Trowse History Society led us to a new trail of discovery. At the time, we didn't realise their full significance. A page torn from a 2006 Sotheby's sales catalogue, shows a landscape painting called '*A Prospect of Trowse Hall, Norwich*' by local artist Thomas Bardwell, mid C18. (see cover). A horse and rider descend from a high ridge of ground with a view below of a straight avenue lined with trees leading to a large white building (Trowse Newton Hall – John Money's childhood home, ransacked during the Norwich Bread Riots in 1776) with the river Yare clearly visible behind and the cathedral and castle in the distance. Comparing the scene with a detail of William Faden's later 1797 map of



Norfolk, we can locate the scene exactly and notice that the map records the site as 'Crown Point', and the landowner as 'Money Esq'. The view is still recognisable today looking down from Hall Drive with Whitlingham Hall (built later by the Colmans) on the right, Trowse Newton Hall in ruins near the car park, and the river Yare now

obscured by the later addition of the broads and Whitlingham Lane. In 1784-6 John Money built his new 'Crown Point Hall' on the approximate site where Whitlingham Hall stands today.

The Sotheby's sale description also mentions a young itinerant American artist, Ralph Earl, who sailed to England with Burgogne and Money disguised as the latter's servant. The name Ralph Earl leapt up from the page! Today Earl is recognised as a famous society portrait painter in C18 America with work in national collections. As an art historian, I had always been puzzled that there was no portrait of John Money. The Royal Academy in London was helpful in confirming that Earl exhibited at the prestigious annual Academy exhibition for three consecutive years 1783-5. Who made this possible? Further research revealed that John Money acted as a sponsor to the young artist bringing him back to Trowse, introducing him to potential local patrons such as the Carpenters, farmers and landowners in Aldeby. Unfortunately most of these early portraits painted in England are now back in the US, sold in the early C20 in the lucrative trade of 'heritage' portraits. However John Money also mixed in influential London social circles and he generously sponsored Earl's tuition with resident American artists in London such as Benjamin West. But still no portrait of John Money.



Then serendipity and curiosity again played a hand. At that point I was unfamiliar with the Royal Norfolk Regiment Museum in Norwich. Finding the website and typing in 'John Money' struck gold ... up popped a striking full-length portrait of 'Major John



Money' in resplendent redcoat military uniform with his spyglass pointing towards the distant horizon. The sophisticated treatment of light on gilt buttons, braids and the finely textured fabric immediately spoke 'Ralph Earl'. The soft romantic brushwork of the landscape suggested a mid-1780s date, and is reminiscent of late Thomas Gainsborough and Joshua Reynolds whose work he would have seen in London.



On the frame it is simply titled 'Major John Money' with no signature. It was gifted to the museum by descent through the Hayward family of Melton Constable in 1993. In my view the portrait is likely to have been an intimate gift by the young artist to his friend and patron John Money before he returned to the US in 1785 and became famous. The museum plans to fundraise and have it professionally cleaned of old layers of varnish and then put on display in Norwich next year. Further research continues.

There are fascinating parallels in personality between John Money and Ralph Earl. Both were known as adventurous 'derring-do' young men. Money on the battlefield and with his pioneering balloon flights from London and Norwich. Earl in his resistance to military service and support of the loyalist British cause for which he would have been labelled a



traitor. Both were casual in social relations and resisted being tethered to family obligations – John Money never married but fathered two sons with different mothers, and Ralph Earl had two wives, one in his native Connecticut who he left when he escaped to England, and a second wife, Ann Whiteside from Norwich who accompanied him back to America. But no divorce is recorded!

## **Mary Alexander**

### Further Recommended Reading

Rick Atkinson, **The British are Coming**, vol 1 of The Revolution Trilogy, 2019. An exciting and vivid read. Mentions John Money in Vol 2 The Fate of the Day

Elizabeth Mankin Kornhauser, **Ralph Earl: the Face of the Young Republic**, Yale University Press, 1991



# MPA

MAY'S PERFORMING ARTS

## *Dance & Performing Arts*

Mays Performing Arts provides high-quality training in dance, theatre, and music within a fun, caring, and nurturing environment..

**We offer classes in:**

*Ballet, Tap, Modern, Jazz, Musical Theatre, Pop & Street, Singing, Lyrical, Strength & Conditioning, Acro, private singing and Holiday workshops.*

Scan me for more info



**More Information:**



[www.maysperformingarts.co.uk](http://www.maysperformingarts.co.uk)



[info@maysperformingarts.co.uk](mailto:info@maysperformingarts.co.uk)



I usually use my contribution to the Trowse Villager to focus on local issues that shape the day-to-day lives of residents in Trowse.

But sometimes it is important to reflect on issues that affect communities not just here in South Norfolk, but across the country. I therefore want to take this opportunity to address the growing divisions within our society and the rise in antisemitism.

As many of you will know, on 29 April in Golders Green, two Jewish men were the targets of a terrorist attack. This was a deeply disturbing act of hatred directed at British Jews, which has understandably shaken the Jewish community and caused concern across the country. My thoughts are with those affected, and with Jewish people who will feel the deep impact of these events.

What concerns me just as much as the Golders Green attack itself is the wider pattern it reflects. Antisemitism does not appear overnight. It grows slowly, often in ways that can be overlooked or dismissed, and is the result of attitudes and behaviours that have been allowed to develop over time. Prejudice takes root gradually: in the language we hear, the behaviour we tolerate, and the moments we choose not to challenge.

We have seen warning signs in recent years, from rising tensions on university campuses to arson attacks, vandalism of places of worship, and incidents of intimidation directed at Jewish individuals simply because of their faith.

Antisemitism is an evil, plain and simple. It has no place anywhere in our society and we must stand against it. However, simply calling it out is not enough. We must also act.

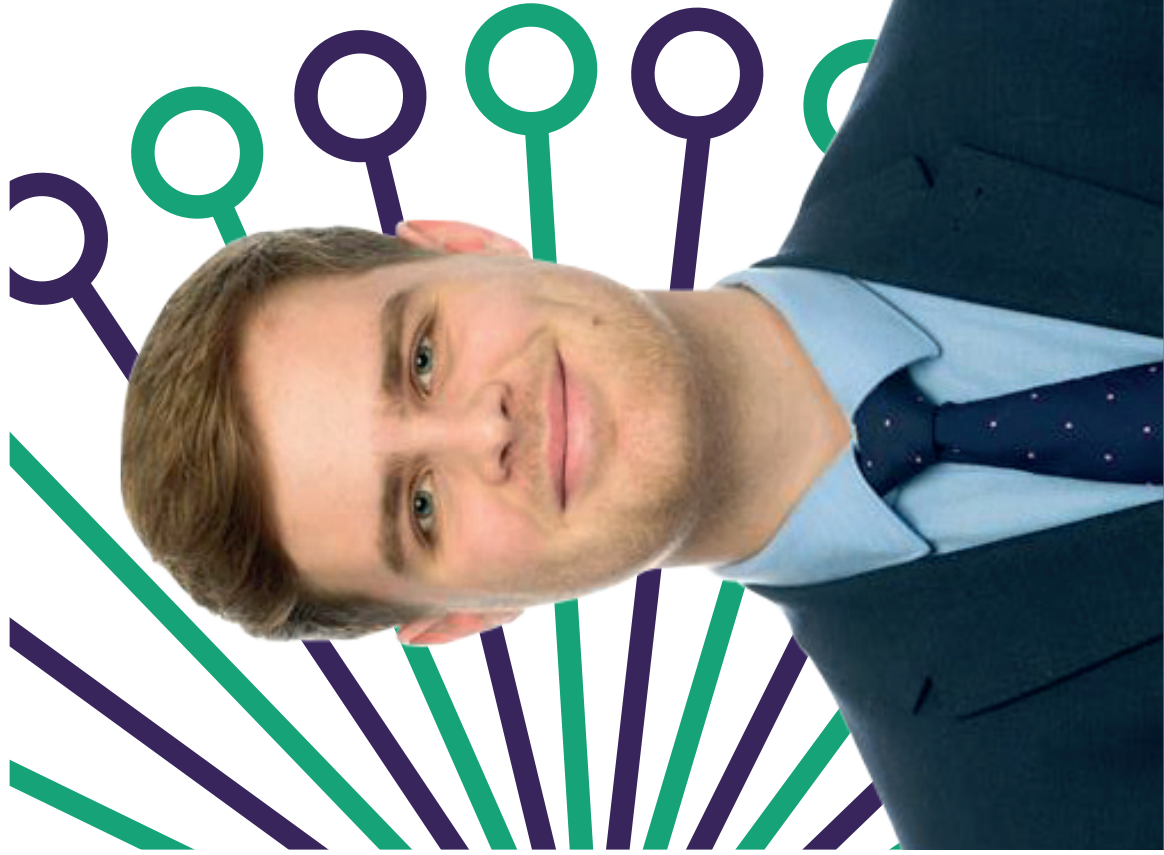
That means ensuring every hate crime is properly reported and investigated, that victims of antisemitism and discrimination are supported, and that the bodies responsible for keeping our communities safe have the resources they need to respond effectively.

Beyond that, it means all of us being prepared to confront antisemitism wherever it appears - whether in our communities, workplaces, on social media or amongst friends and family, and not allowing it to become normalised.

Each of us has a role to play. Challenging prejudice is not always easy, but it is necessary. Turning a blind eye only allows harmful ideas to spread - when we speak up, we can stop them in their tracks.

At its core, this is about the kind of country we want to be. Britain is at its best when it is open, tolerant and respectful - when people of all backgrounds, faiths and beliefs can live side by side in safety and dignity. Whether it is antisemitism, Islamophobia, racism, homophobia or discrimination of any kind, hatred has no place in our society. If we are serious about protecting the values that bind us together, we must be willing to confront prejudice directly, stand up for one another, and refuse to allow division and intolerance to grow within our communities.

Ben Goldsborough MP



**Providing peace of mind and bespoke advice on pensions, investments and broader financial planning to help you achieve your financial goals.**

For a complimentary initial call, please contact **Flynn Drinkell**:



**01603 431740**



**[flynn.drinkell@lovedayandpartners.com](mailto:flynn.drinkell@lovedayandpartners.com)**

Meetings can also be held over most video conferencing services.

When investing your capital is at risk.

**LOVEDAY & PARTNERS**

A TITAN WEALTH COMPANY

Loveday & Partners - A Titan Wealth Company is a trading style of Titan Wealth Planning Limited. Titan Wealth Planning Limited is authorised and regulated by the Financial Conduct Authority, FRN 574458. Company number 07839452. Registered office: 101 Wigmore Street, London, W1U 1QU.

## Regular bookings at Trowse Manor Rooms

Please check the calendar on the website for changes and additional activities  
[www.trowsemanorrooms.org.uk](http://www.trowsemanorrooms.org.uk)



Your Village Hall

These are the regular bookings at Trowse Manor Rooms. For a view of all bookings and hires and to book, please see the calendar and booking enquiry at [www.trowsemanorrooms.org.uk](http://www.trowsemanorrooms.org.uk)

### Monday

10am–11.30am (term time)

**Trowse Baby & Toddler Group**  
[trowse.babytoddler@gmail.com](mailto:trowse.babytoddler@gmail.com)

Currently available for afternoon hire

6.30-9.30pm

**Parish Council Meetings**

### Thursday

9:30-10.30am

**Pilates with Nikki**  
Nikki 07905 415887 or  
[nikkiwhyte11@gmail.com](mailto:nikkiwhyte11@gmail.com)

3:30-4.30am

**Aem Hai Karate**

Dan 07908 703555

Currently available for evening hire

### Tuesday

Currently available for hire

### Wednesday

Daytime currently available for hire

6.45-7.45pm

**Yoga & Relaxation with Donna**

Donna 07496 287370

### Sunday

4-6pm

**Monthly Gong Yoga Session**  
Julie 07849 012213 or  
[yogawithjulie@outlook.com](mailto:yogawithjulie@outlook.com)

**Available to hire for parties  
& other events**

For bookings call 07344 503111  
(9am–6pm) or email  
[trowsemanorrooms@gmail.com](mailto:trowsemanorrooms@gmail.com)

**Future community and social  
events at the Manor Rooms**

The Parish Council will be organising more  
community events.

For updates see our socials:

[www.trowsemanorrooms.org.uk](http://www.trowsemanorrooms.org.uk)

FaceBook: @Trowse Manor Rooms

BlueSky: @trowsemanorrooms.bsky.social

And keep an eye on the Manor Rooms  
window for notices



Your Village Hall

## TROWSE MANOR ROOMS – HIRE RATES

The Manor Rooms are available to hire seven days a week. Hire includes a large main room with chairs and tables, a well equipped kitchen, including microwave, cooker and air fryer, a courtyard and optional former bowling green

<b>Trowse Community Groups</b>	<b>£12.00 per hour</b>
<b>Charities (for fundraising activity)</b>	<b>£12.00 per hour</b>
<b>Private Commercial Lets</b>	<b>£15.00 per hour</b>
<b>Corporate Commercial Lets</b>	<b>£35.00 per hour</b>
<b>Children's Birthday Parties (under 13 years of age)</b>	<b>£45.00 for 4 hours</b>
<b>Other Daytime Parties including teenagers</b>	<b>£55.00 for 4-5 hours</b>
<b>Evening Parties</b>	<b>£110.00 for 4-5 hours</b>
<b>Hire of green at the rear with main hire</b>	<b>£25 per hire</b>

For booking information please see

[www.trowsemanorrooms.org.uk](http://www.trowsemanorrooms.org.uk)

or contact **07344 503111** (9am-6pm)

or email [trowsemanorrooms@gmail.com](mailto:trowsemanorrooms@gmail.com)

The Parish Council reserves the right to vary rates at our discretion

# R.B. COPPING FUNERAL SERVICE

Independent Family Funeral Directors Since 1935

For Personal Attention with Dignity and Respect

Private Chapels of Rest

Memorials & floral tributes supplied

Pre-paid funeral plans available



125 The Street, Poringland, 56 Langley Road, Chedgrave,

Norwich, NR14 7RP

Nr Loddon NR14 6HE

Tel. 01508 494434

Tel. 01508 521159

[www.coppingfunerals.co.uk](http://www.coppingfunerals.co.uk)



**JOIN US FOR FOTS FEST**

**FRIDAY 19TH JUNE** | **4PM - 7PM**

**Trowse Primary School Fete**  
Pepperpot Drive, Trowse,  
NR14 8TU

ENTERTAINMENT LINE UP | BOUNCY CASTLES

RAFFLE | LICENSED BAR

STALLS & GAMES | YUMMY FOOD | ARTS & CRAFTS

For more info email:  
[friends.trowseprimary@gmail.com](mailto:friends.trowseprimary@gmail.com)

**Friends of Trowse School**

WITH THANKS TO OUR SPONSORS

LOCKNER architects	REDWELL BREWING	Winkworth	HOOHA COMEDY CLUB	future radio 107.8 fm
BRICK®	Tallon	YARD	WEAVERS ARMS	BRICK

## Eco Church

### The Benefits of being in Nature

A glorious sunny day on 24<sup>th</sup> January was ideal to count the birds that landed, as part of the Big Birdwatch. A list of birds are on the Eco notice board. There was plenty of activity around the bird feeders, so thanks must be given to Dawn who keeps the feeders full. The churchyard and its wildlife is for all to enjoy and we encourage you to sit and watch whenever you want some time out.

Have you ever heard of Phytoncides? Neither had I until I came across Dr. Joseph Jebelli's book *Why Doing Nothing Can Change Your Life*. Phytoncides are compounds released by trees and plants to defend them from harmful bacteria and fungi but when we breath them in these compounds stimulate our parasympathetic nervous system. This part of our

nervous system is responsible for keeping us regulated, relaxed and restful. In this state our heart rate slows and our bodies start to recover from stress. Dr. Jebelli also states that spending a short time in nature or just staring out of the window helps our brains to relax and for us to become more productive and imaginative. So, doing nothing is not being lazy, it's helping us to recover, improve our mental wellbeing and become more productive. St. Andrews' graveyard is the ideal place to experience doing nothing and breathing in phytoncides so please come and sit among the trees, listen to the birds and rest.



Our annual plant sale took place on a lovely day in May. We had a wide variety of plants for sale including lots of vegetable plants. As always, delicious cakes and coffee were enjoyed by all.



The Good Gym came and helped us spring clean inside and out. We cleared rubbish from the churchyard and the church. We are very thankful to these volunteers. Thanks also goes to Tony who keeps the prayer path cut and helps us manage the churchyard for wildlife.

Our next Eco event is June 13<sup>th</sup> Count On Nature, 10am to 12 noon. This event will be looking around the churchyard for bugs, insects and plants to identify. Magnifying pots will be available as well as refreshments.

**Let's Explore the Wild!**

Join us at St Andrews Trowse and make exciting discoveries in the churchyard

Saturday June 13th 10am til 12noon  
Refreshments provided

for more details contact Sarah  
07920387655

**A Date for your Diary: Saturday 8<sup>th</sup> August 2026**  
**The Gillian Martin Memorial Concert**



**(aka Gillyflower's 90<sup>th</sup> Birthday Bash)**

It was a year ago this month (May) that we sadly lost our beloved organist Gillian (whom I always called Gillyflower, which she loved.) She played the organ for us from 1995 until a very short time before she died, and is greatly missed. Gilly would have turned 90 on 5<sup>th</sup> August this year, and it seems very fitting to celebrate her memory with a concert in Trowse Church. Several musician friends who knew and loved Gilly have been invited to make a musical contribution, and have all responded enthusiastically. I know rehearsals are well underway!

We'll begin the celebration with light refreshments at 6.00 pm. The programme is yet to be decided but will definitely include a communal recitation of "The Owl and the Pussycat". Gillyflower was a great fan of Edward Lear (as well as the Clangers, Shaun the Sheep, and Wallace and Gromit – especially Feathers McGraw.) It promises to be a great evening!

A date for your diaries.....

**Saturday 25<sup>th</sup> July at 3 pm**

at ***Trowse Church***

Enjoy a delicious

***AFTERNOON TEA***



to the accompaniment of  
beautiful

***Spanish Guitar Music***

played by Peter Turrell

**Tickets £12 each**



## Norwich Community Advice Connect Centre Needs Volunteers!

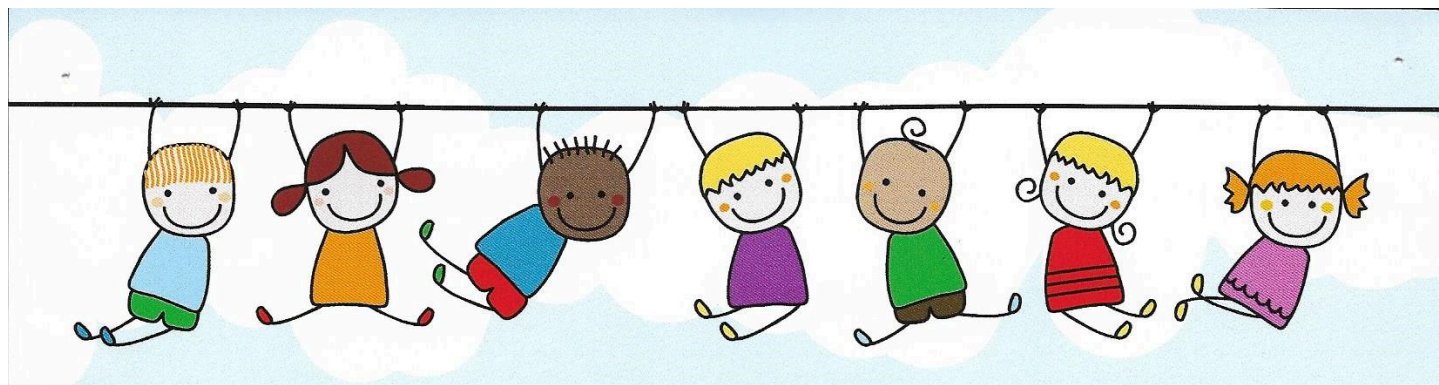
A small group of city centre churches have set up a new charity to provide face to face debt advice, initially from The Chantry Hall Foodbank (behind The Assembly House).

To grow the charity, we need more volunteers including Money Mentors, Client Support Mentors, Receptionists and Trustees. We provide unconditional, confidential, free, face to face advice, to individuals and families in Norwich.

We are affiliated with the national charity **Community Money Advice** who provide the regulated debt advice.

Please do contact me [cherri@ncmacc.org.uk](mailto:cherri@ncmacc.org.uk) for an informal chat.

Many thanks, Cherri Volunteer Co-ordinator, trustee and Money Mentor <https://www.ncmacc.org.uk/>



## Trowse Baby and Toddler Group

Mondays (term time) 10:00-11:30

Trowse Manor Rooms, Trowse NR14 8ST

£3 per child / £1 per extra adult or child

Babies 6 months or under free

### Come and Join the fun!

For parents, carers and little ones from newborn to 4 years of age.

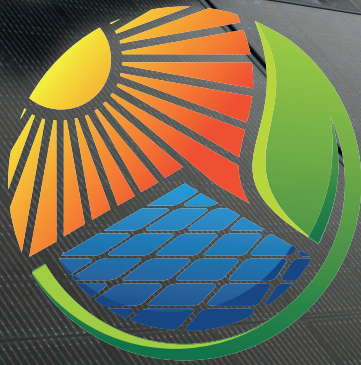
Sessions include free play, craft activities and music / singing.

Tea, coffee and cake for the adults and a drink and snack for the children included!!

To book or for more information  
please email:  
[trowse.babytoddler@gmail.com](mailto:trowse.babytoddler@gmail.com)



GivEnergy®  
Approved Installer



# SunPro Solar

We use top of the range GivEnergy products, (as recommended by E-on and Octopus) but at value for money prices!

Battery ready solar system  
10 445W high output panels  
GivEnergy Hybrid inverter

**£4950**  
all inclusive  
fitted price

We prefer to survey in person, but rest assured we never **sell** on site - so no over-long stays or 'sales tactics'. A survey takes no more than 40 minutes, after which we return to the office and email your quote within 24 hours for you to consider in your own time.

**Sunpro Solar do not 'fit and run'**. Once the system is installed, we explain it all to you on the day - and return a week later to talk you through the app, help you upload documents for the Smart Export Guarantee and choose the best tariff for you. **Please don't hesitate to call our manned 24-hour helpline for any advice, assistance, or to book a survey.**

We recommend you get more than one quote, and we are confident we will stand out on price, service and quality of install. Make sure alternative installers are MCS accredited for **both** solar and batteries. If your installer is not MCS accredited for batteries, they cannot issue an MCS certificate for your whole system! Sunpro Solar will issue you an MCS certificate for your solar, and another for your battery.



Office: **01603 666037** • 24 Hour: **07900 211909**

[info@sunprosolar.co.uk](mailto:info@sunprosolar.co.uk)

The Boatyard, Whittingham Lane Trowse, Norwich NR14 8TR

**sunprosolar.co.uk**





# Corton House

*Loving Care and Support*

**"My dad is a totally different man since coming to Corton House. He was lonely, now he is really happy and content."**


We are a not-for-profit care home for older people, with a Christian ethos, welcoming to all. Situated in delightful gardens, we offer en-suite rooms, freshly cooked meals and a varied activities programme. Get in touch to book your tour and find out more.

[www.cortonhouse.co.uk](http://www.cortonhouse.co.uk)

City Road, Norwich, NR1 3AP

01603 620119

[manager@cortonhouse.co.uk](mailto:manager@cortonhouse.co.uk)

 Search: Corton House Care Home

# M & M HEATING

LOCAL FAMILY BUSINESS

- GAS & OIL SPECIALISTS • BOILER SERVICING
- BREAKDOWNS & REPAIRS
- INSTALLATIONS & UPGRADES
- GAS SAFETY CERTIFICATES

mmheating9@gmail.com

Mark 07979 725868



# Able

Community Care  
Est. 1980



Live-in Care



Holiday  
Companion  
Care



Respite Care



Home from  
Hospital Care

Your Own Front Door...  
Priceless!

Call 01603 764567

[www.ablecommunitycare.com](http://www.ablecommunitycare.com)

[info@ablecommunitycare.com](mailto:info@ablecommunitycare.com)

# Buying a Home?



Regulated by

**RICS**<sup>®</sup>



Make Sure You Know What You're Getting Into.

At Allen-Aldus Surveying, we provide RICS-accredited **home surveys** and **valuations** that give you the confidence you need when making property decisions.

- ✓ **Tailored to You** – We focus on your concerns and the property's unique aspects.
- ✓ **Clear, Jargon-Free Advice** – Understand exactly what you're dealing with.
- ✓ **Ongoing Support** – We call before the survey, update you on the day, and follow up after the report.

## Your Surveying Needs.

*Our Personal Commitment.*



*Allen-Aldus Surveying is an independent RICS regulated firm, carrying out residential Level 2 & 3 Home Surveys and Valuations.*



**Serving Norfolk & Surrounding Areas**

**w: [www.aasurveys.co.uk](http://www.aasurveys.co.uk)**

**e: [hello@aaasurveys.co.uk](mailto:hello@aaasurveys.co.uk)**

**m: 07586 599917**



Five highly trained hair stylists  
Many years' experience  
Ladies', Gents' and Children's styles available  
: Colour Technicians : Perm Specialists :



# SALONSIXTYTWO

UNISEX HAIR & BEAUTY

*Telephone or E-mail for an appointment today*

Free Parking

Disabled Access

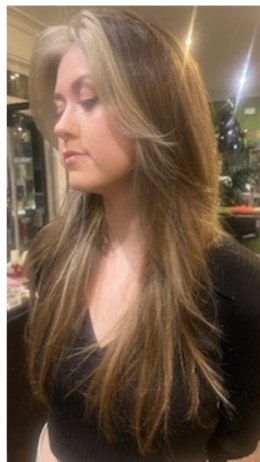
Air Conditioning

Salon SixtyTwo  
62 Sandy Lane  
Norwich  
NR1 2NR

[www.salonsixtytwo.co.uk](http://www.salonsixtytwo.co.uk)

01603 766991

[info@salonsixtytwo.co.uk](mailto:info@salonsixtytwo.co.uk)



# BOILER AND CENTRAL HEATING SPECIALISTS

CALL **07830 829741**  
for a **FREE** quote

Email: [info@norwichheatingservices.co.uk](mailto:info@norwichheatingservices.co.uk)

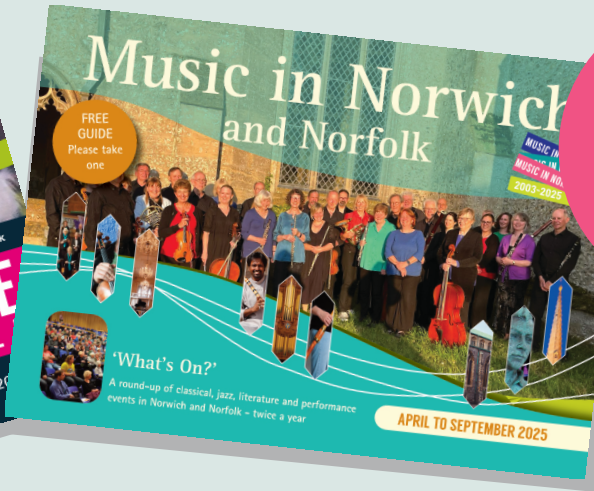
**NORWICH  
HEATING  
SERVICES**

bringing your boiler back to life



[www.norwichheatingservices.co.uk](http://www.norwichheatingservices.co.uk)





Pick up a free guide to arts and music What's On



To order by post scan the QR

Free guides to festivals, exhibitions and concerts in Norwich and Norfolk. Printed booklets to pick up free from the Manor Rooms, Crown Point Tavern, the church or River Green in Trowse, the Egg Shed (Trowse Millgate) and many venues and arts info racks in the city, by post for the cost of the stamp, and downloadable as a pdf – see [www.artinnorwich.org.uk](http://www.artinnorwich.org.uk) for details.

Find out more at [www.artinnorwich.org.uk](http://www.artinnorwich.org.uk) or [www.musicinnorwich.org.uk](http://www.musicinnorwich.org.uk)

## Cooper Home Improvements

### Carpentry Services

- Doors . Internal / External
- Windows . Wood / UPVC
- Kitchen Fitting / Refurbishment
- Floors . Laminate / Wooden
- Flat Pack Assembly
- Skirting / Architrave
- Guttering . Fascia



### Double Glazing Repairs

#### Maintenance to Refurbishment



- Replacement Sealed Units ←
- Windows Hinges & Handles ←
- Door Locks ←
- Cat Flaps ←

City & Guilds Qualified

### Free Estimates

Reliable, Reasonable & Recommended

Please Call David

For further range of services

01508 490551 or 07982 711499  
carpentercooper@aol.com

## Maths Tuition

Looking for 1:1 teaching,  
from upper primary to A-Level?

I tutor mathematics to help students develop confidence, excel in exams, and achieve their goals.

Call Gregg Bontly, B.Sc (Hons), MBA

on 07905 916 685

[greggbontly@hotmail.com](mailto:greggbontly@hotmail.com)

**YELVERTON GARAGE LTD**  
**A146 LODDON ROAD**

SERVICE – DIAGNOSTICS – AIR CON – MOTs

**01508 492758**

**V.W. AUDI SPECIALISTS**  
www.vwaudinorwich.com



**QUALITY LIGHT  
COMMERCIAL VEHICLE  
SALES**

WITH FULL AFTER SALES SERVICE

**01508 494464**

www.yelvertonvans.com



Call, text, email for more info  
**Martin@**  
housemartinrenovations.co.uk

**All home improvements,  
maintenance and renovations.  
Interior and Exterior**

**07769151073**

**DKC PLUMBING**  
**Oil Boiler Specialists**

- Oil Fired Boiler Servicing
- Boiler Breakdowns
- Boiler Repairs
- Oil Tank Repairs
- Radiator Power Flush
- General Plumbing
- Heating Systems
- Domestic & Commercial

Out Of  
Hours  
call outs  
available

Fully insured

Rated people

Google  
facebook

Yell.com.



95% of all  
breakdowns  
fixed within  
the first  
hour!!



Call today for a quote  
**07375 995 198**  
www.dkcplumbing.co.uk

**M Wiseman**

**Interior & Exterior  
Painter & Decorator**

Tel: 01508 494602

Mob: 07941 699232

The Brambles  
3 Mill Close  
Poringland  
Norwich  
NR14 7JP



## Useful contact numbers and email addresses

### Emergency Numbers

#### Police, Fire or Ambulance Emergency 999

Police–Non Emergency Norfolk Constabulary.....101 ... [www.norfolk.police.uk](http://www.norfolk.police.uk)

Ambulance–Non Emergency East of England Ambulance Service .....0345 601 3733

.....[www.eastamb.nhs.uk](http://www.eastamb.nhs.uk)

#### NHS 111 Service

Fire Service–Non Emergency Norfolk Fire Service .....01603 810351

.....[norfolkfireservice.gov.uk](http://norfolkfireservice.gov.uk)

Electricity Emergencies Distribution .....0800 31 63 105 or 105 from mobile

.....[www.ukpowernetworks.co.uk](http://www.ukpowernetworks.co.uk)

Gas Leaks & Emergencies National Grid .....0800 111 999

.....[www.nationalgrid.com/uk/gas](http://www.nationalgrid.com/uk/gas)

Water Leaks Anglian Water.....0800 771 881 .....[www.anglianwater.co.uk](http://www.anglianwater.co.uk)

Samaritans Norwich Samaritans.....01603 611311.. [www.samaritans.org](http://www.samaritans.org)

Animal Emergencies RSPCA.....0300 1234 999 [www.rspcanorwich.org.uk](http://www.rspcanorwich.org.uk)

### General Information

Norfolk & Norwich University Hospital Main Switchboard.....01603 286286

..... [www.nnuh.nhs.uk](http://www.nnuh.nhs.uk)

Norfolk County Council Main Switchboard.....0344 800 8020 [www.norfolk.gov.uk](http://www.norfolk.gov.uk)

South Norfolk District Council Main Switchboard..... 01508 533633 or 0808168 2000

..... [www.south-norfolk.gov.uk](http://www.south-norfolk.gov.uk)

Trowse Parish Council.....07899 798853

Citizens Advice Bureau Norwich District Office .....National advice line **0800 144 88 48**

.....[www.norwichcab.org.uk](http://www.norwichcab.org.uk)

Trowse Primary.....01603 622485 . [www.trowseprimaryschool.co.uk](http://www.trowseprimaryschool.co.uk)

Framingham Earl High School.....01508 492547

.....[www.framinghamearl.norfolk.sch.uk](http://www.framinghamearl.norfolk.sch.uk)

Norfolk Library Service Poringland Library.....01508 494891 [www.norfolk.gov.uk](http://www.norfolk.gov.uk)

Norwich Millennium Library.....01603 774774 [www.norfolk.gov.uk](http://www.norfolk.gov.uk)

RSPCA Norwich Office.....01603 766001 [www.rspcanorwich.org.uk](http://www.rspcanorwich.org.uk)

NSPCC General Help & Advice.....0800 800 5000 [www.nspcc.org.uk](http://www.nspcc.org.uk)

Childline ..... .0800 1111 [www.childline.org.uk](http://www.childline.org.uk)

### Transport

Norwich Airport General Enquiries.....01603 411923

.....[www.norwichairport.co.uk](http://www.norwichairport.co.uk)

Norwich Railway Station General Enquiries .....0345 600 7245

.....[www.nationalrail.co.uk/stations/nrw/details](http://www.nationalrail.co.uk/stations/nrw/details)

Greater Anglia Customer Relations.....0345 600 7245 [www.greateranglia.co.uk](http://www.greateranglia.co.uk)

First Bus...<https://www.firstbus.co.uk/norfolk-suffolk/routes-and-maps/network-norwich>

***Should you find any of this information incorrect please inform the Editor***

# River Green

COOKERY SCHOOL & RESTAURANT

## Part of the Trowse Community since 2011

Award winning plant based  
dining

Friendly, casual service

Range of vegan, organic, local  
and gluten free wines, beers  
and spirits

Internationally inspired cuisine  
using ingredients sourced from  
as close to home as possible

Seasonal produce in a  
constantly adapted menu, with  
all dishes available gluten free

Family friendly, and dog friendly  
too

5% Ecodiscount on food for  
customers arriving on foot or  
by bike

[bookings@rivergreenrestaurant.com](mailto:bookings@rivergreenrestaurant.com)

[www.rivergreenrestaurant.com](http://www.rivergreenrestaurant.com)

01603 622448

The Street, Trowse  
NR14 8AH

