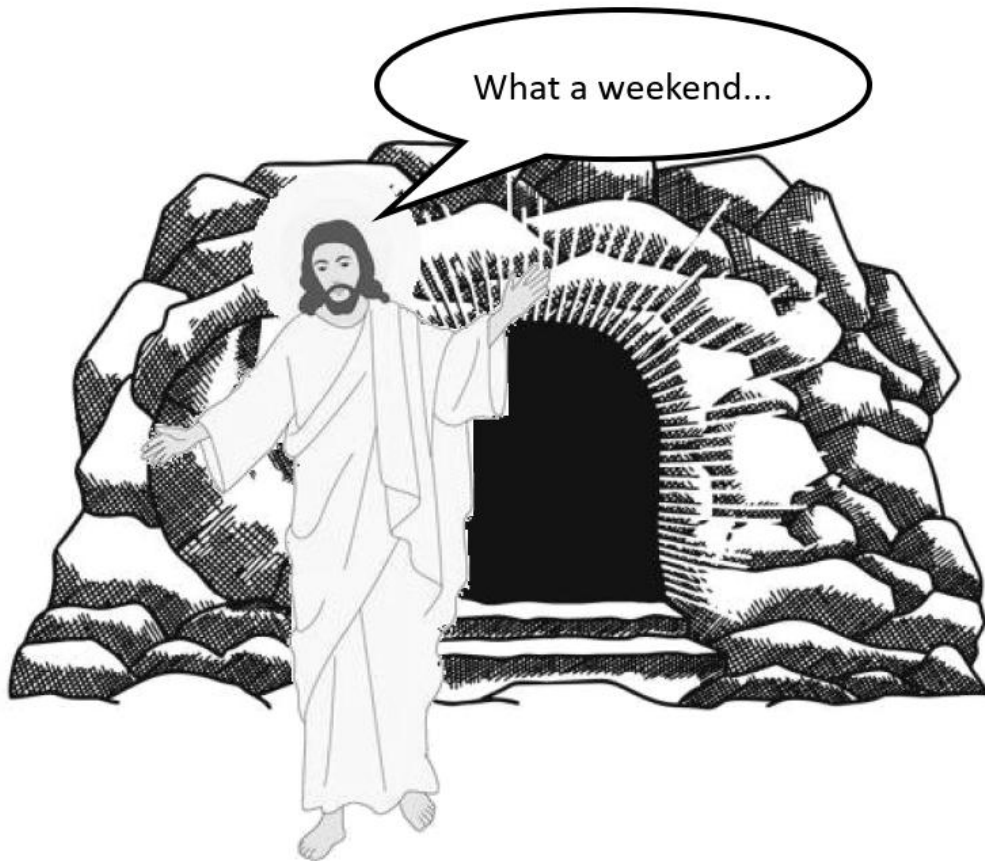


# COUNTRY NEWS

APRIL 2026

Parish Magazine of  
*Shillingford St George and Dunchideock*



Happy Easter!  
For everything on, see the Diary.

## LETTER FROM THE RECTORY



April begins in the middle of Holy Week – in the deep darkness before the dawn, in the darkness of despair, the ebbing of all hope. To the followers of Jesus, it seemed as though “the hopes and fears of all the years,” that were met in his birth were brought to nothingness by his death on the cross. But just as a seed must fall into the earth and die to bring new fruitfulness, so Jesus died, was buried and rose transformed, as a sign of the new life that is promised to all who trust in him.

### ***Happy Easter!***

And so we celebrate the signs of the new life springing up around us! After the rains of January and February it is a joy to see the many-coloured flowers, to hear the birds in the blue sky and to feel the warmth of the strengthening sunlight. Why not celebrate new life by doing something new?

**Devnent** are giving another gig in St Michael’s Doddiscombsleigh, on Friday 17 April at 7.30pm – see their poster for more details.

The gentle **Teatime Service** is in St Mary’s Dunsford on Sunday 19 April at 3pm – a short, interactive service for older people and their carers, followed by tea and cake and chat!

**Messy Church** takes place in Dunsford Village Hall on Saturday 25 April at 3pm – a fun service for children and their families, with a Bible story, crafts and song with refreshments!

**Forest Church** is in Ashton beside the Village Hall on Sunday 26 April at 4pm – spend some time outside listening to our Creator speak to us in the first language of creation.

And a “heads up!” for the **Bellringing Open Day** in St James’s, Christow, on Saturday 2 May 12-4pm. Come and have a go!

Interspersed with these are our **Annual Parochial Church Meetings** or **APCMs**, which are open to the whole parish to elect Churchwardens for the coming year. Please do attend - it’s an opportunity for your voice to be heard in the running of your local church. See the *News* section for details.

See you there!

**Revd. Ruth Frampton**

## Shillingford St George Church Calendar for April 2026

Date	Name	Service	Time
2 April	Maundy Thursday	Holy Communion at Ide	19:30
Date	Name	Service	Time
3 April	Good Friday	Devotional Services at Ide	13:00
		and at Alphington	15:00
Date	Name	Service	Time
5 April	Easter Day	Holy Communion	09:30
Sidesman	Norman		
Readers	Di and Norman		
Reading	Colossians 3:1-4	Matthew 8:1-10	
Prayers	Clergy	Glebe Lane & Place Farm Area	
Date	Name	Service	Time
12 April	Easter 2	Holy Communion	09:30
Sidesman	Liz		
Readers	Derek and Peter		
Reading	1 Peter 1:3-9	John 20:19-end	
Prayers	Clergy	Road through Shillingford St George	
Date	Name	Service	Time
19 April	Easter 3	Evensong	18:00
Sidesman	Di		
Readers	Tam and Edmund		
Readings	1 Peter 1:17-23	Luke 24:13-35	
Prayers	Clergy	Surrounding parishes of Dunchideock, Kenn & Exminster	
Date	Name	Service	Time
26 April	Easter 4	St George's Patronal HC	09:30
Sidesmen	Tom and Gwen		
Readers	Norman and Ken		
Readings	1 Peter 2:19-end	John 10:1-10	
Prayers	Nick	Barrack Lane & Barton Lane	
Date	Name	Service	Time
3 May	Easter 5	Morning Prayer	09:30
Sidesman	Nick		
Readers	Sue and Di		
Readings	1 Peter 2:2-10	John 14:1-14	
Prayers	Clergy	Oak Close & Waybrook Lane	

## Flower Rota –April/May 2026

5 & 12 April - Maureen                      19 & 26 April - Liz   3 May - Pauline

## Easter Services

*Palm Sunday* will be combined with a Confirmation Service with Moira, Bishop of Crediton, at Alphington, starting at 11:00. There will be no service at Shillingford that day, but palm crosses will be distributed at St George's on Easter Day.

Don't forget to change your clocks!

*Maundy Thursday* Holy Communion at Ide, at 19:30.

*Good Friday* Devotional Services\* at Ide & Alphington (\*no service at Shillingford)

*Easter Day* Holy Communion at 9.30

**St George's Supper** will take place in the Village Hall on Monday 27 April at 19:00. This is a Community Event and Everybody is Welcome!

£12 on the door for a 3-course meal.

Booking details on posters around the villages and here in *Country News*.

## Churchyard & Carpark

We welcome dog walkers through the church grounds; but please respect there are family graves here. Keep your dog on a lead. Clear up if your dog goes to the loo and dispose of the poo bag properly. Take your dog groomings away with you – the birds *do not* pick them up for nesting.

Thank you.

**Nick Mansell**



**Lent lunches at Shillingford Village Hall, 25 Feb 2026**

**The Open Door Café – Shillingford Village Hall, 10:30 – 12:00**

Wednesday 1<sup>st</sup> April

Wednesday 15<sup>th</sup> April – Celebration of our 16<sup>th</sup> Anniversary

Wednesday 29<sup>th</sup> April – Police and Communities Officer

**Daphne Crockford**

**The Exchange – Shillingford Village Hall, Saturday 11<sup>th</sup> April, 10.30 – 12.00**

Bring your Books, Toys, Puzzles, Plants and Seeds to swap, or just take away something you see! No Bric-a-brac or clothing please

**Tasty cakes ~ Coffee ~ Tea**

We look forward to seeing you at:



## **St George's Supper**

**27<sup>th</sup> April 2026**

7.00pm

**Shillingford St George Village Hall**

Bring your own wine

Raffle

£12 per Ticket

Please sign the lists in Church or at Open Door Café or call  
Peter & Liz Wareham 01392 832366

## **ALPHINGTON BUS ROUTE CHANGES**

I am aware that some readers of Country News drive into Alphington to use the A bus route. Changes are being made to this route and the C route that will now serve part of Alphington. Our Alphington County Councillor has obtained details from Stagecoach which are set out below.

**Norman Harvey**

From 5th April, there will be some changes to Service A and Service C that affect Alphington and surrounding areas.

### Service A - Alphington to City Centre

- Running times will be adjusted to improve reliability and punctuality. Off-peak buses (Monday-Friday and Saturdays) will continue to run every 15 minutes.
- During the morning and afternoon rush hours, buses will run roughly every 20 minutes.
- The aim of this change is to keep buses more reliable and on time, especially during busy periods.
- Between the City Centre and St Thomas, Service A and Service E will work together to provide a bus approximately every 7-8 minutes.
- New electric buses are expected to be introduced on Service A shortly after the timetable changes.

### Service C - Matford Park & Ride to Sowton (via City Centre)

- Running times will also be adjusted to improve punctuality and reliability.
- Many Service C journeys will now extend to Alphington.
- The route will travel via Bad Homburg Way, A379, Chudleigh Road and Church Road.
- The return journey will operate via Church Road, Dawlish Road, Chantry Meadow, Chudleigh Road, A379 and Bad Homburg Way.
- This extension is designed to serve new housing developments in South West Exeter, including the new bus stops at Trood Lane on the A379.
- Additional bus stops may also be installed on Chudleigh Road as developments continue.

These changes are intended to improve access and reliability, particularly for residents in the growing areas around Alphington.

## VILLAGE LITTER PICK 2026

A very big thank you to all those who turned out, on what was quite a pleasant morning, on Saturday 28<sup>th</sup> February. The number of people was ideal for all routes in both Shillingford St George and Shillingford Abbot. As in previous years there was a fair amount of rubbish, mostly on the roadside, filling 6 sacks collected by Teignbridge 2 days later.

Last year a whole cabbage stole the show; this year, it was 5 children's scooters, a pedal car and copious wine bottles collected from Waybrook Lane.

On the face of it, we collected rubbish that should not have been there, but it is acknowledged that a great deal of it blows around especially on Thursdays when the bins are collected. Any ideas as to how we might reduce the amount that blows around would be appreciated.

Having completed the Litter Pick, "Pickers" were treated to a tantalising range of cakes and biscuits at the Exchange. Our thanks to the Village Hall for their organisation and hospitality, much appreciated.

Same again next year, do join us if you have an hour free and fancy making a contribution to the general upkeep of our community.

Thank you again to all those who help keep our villages as clean and tidy as possible.

**Peter Wareham, Parish Council**

---

### **Calling Notice Annual General Meeting Friends of Shillingford Wood**

Tuesday 21<sup>st</sup> April 7.45pm  
Shillingford Village Hall

Shillingford Wood is owned by the community and is managed by trustees 'Friends of Shillingford Wood' who are registered as a charity (Number 1192484).

It is important that the trustees keep the community informed about the management of Shillingford Wood.

Everyone is welcome to come along and meet the trustees, find out what we have been doing and our future plans for managing the wood and caring for the wildlife within.

We look forward to meeting you and sharing our news on what has been a busy year.

### **FRIDAY WHIST A REMINDER**

*There will be no whist on Friday 3<sup>rd</sup> April (Good Friday).*

*Friday 27<sup>th</sup> March will be the last afternoon meeting of the current session .*

*As from Friday 10<sup>th</sup> April we will be reverting to our evening timings of 18:45 for 19:00 start.*

*WE look forward to seeing all current players, and welcome new ones, for our new evening games.*

# **Shillingford St George Parish Council**



## **Annual Parish Meeting 13<sup>th</sup> April 2026 7.30pm in the Village Hall**

You are invited to an informal evening to hear of the work of your PC on behalf of our community. We would also like to share our values and priorities and offer this as an opportunity for you to influence our thinking. We anticipate plenty of opportunity to interact, both during the mini presentations and refreshments.

### **A short resume of the last Shillingford Parish Council Meeting**

Councillors were pleased to welcome Rhys Andrews, the new Neighbourhood Highways Officer for our area. Rhys explained that any Highways problems should be reported online where pothole and drainage issues will be dealt with according to policy and more complex problems will be referred to him for assessment. Smaller non-hazardous defects will not be dealt with unless they are part of a larger scheme put forward by the Parish Council for consideration but only a few of these are chosen each year owing to budgetary constraints. Most resources are currently engaged in filling dangerous potholes. Rhys met Councillors at the area of flooding outside Shillingford House in January and he informed the meeting that this would be cleared and a report prepared within the next week or so.

Devon County Councillor Alan Connett commented that there is a managed decline of Devon's roads due to a lack of funding. He felt that Shillingford being part of a Cluster with Ide, Exminster and Kenn Parish Councils and the potential

engagement of a Parish Lengthsman were sensible ideas in the view of the imminent Local Government Reorganisation.

The Annual Litter Pick attracted a good number of willing volunteers and a large amount of rubbish was collected around the villages.

The next Neighbourhood Development Plan meeting will take place soon, see noticeboards for the date.

The Annual Parish Meeting will be on Monday 13th April 2026 in the Village Hall.

The Chairman made a statement regarding the wish to regain the use of the Village Green and received support from all Councillors present.

**Maureen Adams**  
**Clerk**

---

## **LAND WANTED TO RENT OR BUY**

Committed owner looking for land close to Exeter to keep two horses privately. 2 to 3 acres to rent, or 5 to 10 acres to buy. Decades of horse and land management experience and is trained in Australian-style horsemanship — happy to offer informal help backing horses for any interested landowner. The land would be carefully and lovingly maintained. Please get in touch — we'd love to have a chat. Contact Simon on: [simon\\_haworth@hotmail.com](mailto:simon_haworth@hotmail.com)

---

## **Shillingford Wildlife Group – Pine Martens**

Following on from the very successful and informative talk on Pine Martens by Devon Wildlife Trust's Daniel Brown in the Village Hall on the 9<sup>th</sup> February, I just want to add a bit more information about these elusive, rare and important animals.



Pine Martens are a critically endangered species in the UK, despite the recent reintroductions to Dartmoor and Exmoor. The animal has been extinct in Devon for more than 150 years, but now that it is back it is hoped to help restore a natural balance back into Devon's wildlife.

In England, Scotland and Wales there are approximately only 4000 Pine Martens with the vast majority of these, 3500+ all located in Scotland. There have been a number of reintroductions since 2015 in various parts of the country, including 13 in the Lake District, 19 in The Forest of Dean, 51 in Wales and in our part of the world, 15 in Dartmoor and most recently 20 in Exmoor. All these reintroduced Pine Martens have come from Scotland. Slowly Pine Martens are naturally repopulating the north of England but these reintroductions in Wales and the South West will hopefully speed up this process.

We can look to Ireland to see how Pine Martens can recover and change the natural ecological balance if protected, as in the Republic of Ireland they were given legal protection in 1975 and in Northern Ireland in 1985. In 1975 Pine Martens at this stage were restricted to the very western parts of Ireland. At this time the Grey Squirrels introduced to Northern Ireland in 1911 had spread across most of the country and the native Red Squirrels were struggling, out-competed and suffering with the squirrelpox that greys spread. Since being legally protected, All Ireland Pine Marten surveys undertaken in 2007, 2012 and 2019 have shown a remarkable recovery of the Pine Martens which have now repopulated nearly all of the country. A side effect of this is that the Grey Squirrels have now almost completely been wiped out, just remaining in the urban areas of the east coast, Dublin and Belfast. The smaller lighter Red Squirrels have also recovered as the greys have declined. Pine Martens will occasionally catch reds but they have evolved with Pine Martens so can live alongside each other. There is a new all Ireland survey taking place this year 2026, the results will be interesting.

With the findings from the All Ireland surveys, perhaps we could hope to see Pine Martens becoming more widespread in the Southwest of England and in particular Devon over the next 20 to 40 years, a slow process but hopefully in time leading to the return of Red Squirrels, who knows ...

**Peter Lovell**

## **FITNESS AND WELLBEING**

**MOMENTS OF DISTRACTION:** Are you distracted and overwhelmed by the constant flow of information from local to global news, updates? Laptops, Smartphones, TVs etc. are full of seductive distractions. Find out why cultivating a Mindfulness practice is more important than ever for the young and adults alike - it strengthens 'cognitive control'; builds the 'awareness muscle'; enhances our ability to pay attention and engage with work and one another. Free intro in person (Dunchideock) or via Zoom.

Contact Shirley Phillips, accredited Mindfulness Teacher

[shirley@exetermindfulness.com](mailto:shirley@exetermindfulness.com); <https://www.exetermindfulness.com/>

# Prime Numbers 2

This year is 2026. The number 2026 can be made by multiplying two prime numbers together:

$$2026 = 2 \times 1013$$

2 and 1013 are both *prime numbers*.

Some numbers are prime numbers, and all other numbers can be formed by multiplying several prime numbers together. For example,

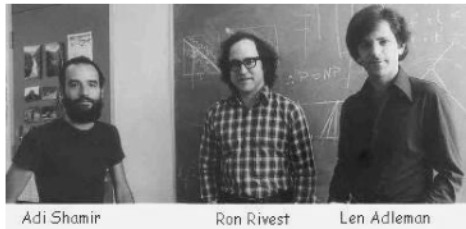
$$6733 \times 193939 = 1305791287$$

6733 and 193939 are prime numbers. They are called *prime factors* of 1305791287. Multiplying prime factors together to get 1305791287 is easy, but what if I ask you to find the prime factors of 1305791287? This is not easy! You have to try each prime number in turn to see whether it is a factor of 1305791287.

Here is a brain-busting puzzle for you, it will take you a whole cup of coffee and a calculator to solve:

Find the six prime factors of 39270.

(answer later in Country News)



Adi Shamir Ron Rivest Len Adleman

In 1977, Ron Rivest, Adi Shamir and Leonard Adleman realised that the extraordinarily long time it takes to find prime factors could be used to good effect. They invented RSA encryption which is used by banks when we buy things online.

The bank multiplies two prime numbers, P and Q, together to get an answer. The answer, which could be as many as 617 digits long, is used to encode your transaction.

To steal your money, the thief must factorise the answer into the two prime factors. This could take thousands of years, even using a computer.

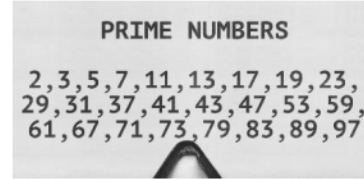
It is not worth the effort even for a thief.



However, the bank knows what the first two prime numbers, P and Q, are so they can decipher the code easily and carry out your transaction.

RSA encryption is widely used to encode our data, emails, messages, and financial transactions giving us all security when working online.

Dawn Bird



**SHILLINGFORD LOCAL HISTORY SOCIETY**  
**The Medical Pages - From Gunpowder to Slums, A Story of Two Doctors Page**  
**Monday 23rd February 2026**

This talk was given by Professor David Radstone. He studied law in England and France and became a solicitor and had the intention of practising law in the then Common Market. However, De Gaulle intervened by saying *non* to England joining. David then studied medicine and trained in Clinical Oncology in London and Oxford, and became a Professor in Sheffield. He moved to Exeter just after the new Peninsular Medical School was opened and retired in 2014. He has been a Trustee of Exeter Historic Buildings Trust and the Devon and Exeter Medical Society Trust that has 12,000 items of historical medical equipment in its collection.

The talk followed the careers of father, Dr David Page, and his son, Dr George Page.

Dr David Page lived from 1845 to 1889 and achieved a first class degree in Chemistry and became Professor of Geology in Newcastle. He subsequently became Chief Chemist at a gunpowder factory at Low Wood in Furness. This factory had a poor safety record and “accidents were frequent” according to a local history of the site. As a result of his work there he decided to change from chemistry to medicine and qualified at Edinburgh University as an MD with a Gold Medal in 1873.

Dr. David Page then became one of the new Medical Officers of Health (MOH), who were concerned with the health of towns and the need to control disease. The first two were in Liverpool in 1847 and London in 1848. In 1873 he became the first MOH for Westmorland and by 1886 he was the Local Government Inspector for most of the north of England and Kent. His work and the area for which he was responsible meant that he travelled alone by horse across England inspecting hospitals, water drainage, and sewers, food factories and dairies. The sewer for Exeter at the time was a hole in the city wall opening into the river, and the city’s water supply came from the river.

As part of his work he collected data on infectious diseases, infant mortality, illegitimacy, homelessness, and births and deaths. During these lonely journeys he frequently fell off of his horse, and finally fell off of a ladder while decorating a Christmas tree. He was “never the same” after this fall, and was diagnosed as having a brain tumour. He died in Dublin in 1889 while undertaking a European tour with his wife, as a final holiday.

His son Dr George Page went to school in Oxford and studied at Edinburgh University, as did his father, and qualified as an MD with honours in 1912. In 1913 he joined the Royal Navy, and was appointed Surgeon Lieutenant to HMS Teal on the China Station. HMS Teal was a river gunboat, launched in 1901 and stationed there as part of the Royal Navy’s Eastern Fleet, to patrol the Yangtze River and protect British interests in China. In 1914 he was working in an International Hospital in Shanghai run by Germany, but on the outbreak of war with Germany in August 1914, George was transferred to the Royal Naval Air Service, which was part of the Royal Navy, and was promoted to Surgeon-Commander. The Royal Navy surgeons had perfected many surgical operations, and their procedures

meant that a leg could be amputated in 2½ minutes. He retired from the Royal Navy in 1922. He then followed his father by becoming Medical Officer of Health for Roxburghshire, in the Scottish Borders, and then for Exeter in 1933.

Public health in Exeter before 1846 had had a poor history mainly due to a lack of sanitation and drainage, with diseases causing high mortality rates. Exeter had a cholera epidemic in 1832 and this water-borne disease killed over 1,000 people and was followed by a smaller epidemic in 1866. Exeter appointed its first MOH in 1866, and by 1904 the municipal staff in public health had increased to 29.

Dr George Page had a wide range of responsibilities within Exeter – more than his father had had in the 19<sup>th</sup> century. In addition to previous responsibilities, were the management of vaccination programmes, and the treatment of tuberculosis, with Exeter having its own TB hospital on St Davids Hill. As MOH, for Exeter, his responsibilities also included 11 hospitals providing specialised care, now absorbed into the Royal Devon and Exeter Hospital (RD&E) at Wonford. He also made a significant contribution to improving living conditions in Exeter through extensive slum clearance in the 1920s and 1930s in the West Quarter. This included the Preston Street and Paul Street areas, when many of Exeter's medieval timber-framed houses were demolished, together with the lean-to hovels which stood against the city walls. It is believed the residents were moved to new council houses in Burnthouse Lane. The annual reports that he produced, reported that in 1935, the cases of cancer were increasing. He retired in 1950.

In summary, the Two Doctor Pages treated, or improved the health of thousands of patients.

Professor David Radstone gave an excellent talk that was illustrated with many images to illustrate the contribution that the two doctors made to improving the living conditions and health of people in various parts of the country and Exeter. He also brought along some historical medical items for display from the Devon & Exeter Medical Heritage Trust collection. The very large number of members and guests had a thoroughly enjoyable evening that was followed by the annual buffet.

The next meeting is on Monday May 18 with a talk “**From Topsham to the Poles. The Tale of HMS Terror**” by John Davidson. This will be preceded by the Annual General Meeting. The Committee is very much in need of new members, so if anyone is interested, please contact the Chairperson, Jan Wood at [jwood227@btinternet.com](mailto:jwood227@btinternet.com).

The membership year is from May to April. The annual fee remains at only £8, and is due in May 2026. This includes free entry to the four meetings and talks for the year, and also covers the cost of the buffet at the February meeting. New members are always welcome. The fee per meeting for guests is £4, or £6 for the February meeting, which also covers the cost of the buffet supper.

**Norman Harvey**  
**Committee Member**  
**Shillingford Local History Society**

Back by popular demand.

# DEVNENT

Performing at  
**St Michael's Church,  
Doddiscombsleigh**  
Friday 17th April

Friday 17<sup>th</sup>, April

Doors Open 7:30

Cloudi Lewis: 8:15-8:45

Devnent: 9-10



**Tickets £10**

Scan the QR Code to book tickets



NO BAR PROVIDED - BRING YOUR OWN DRINKS (ALCOHOL ALLOWED).  
THE NOBODY INN OFFERS 25% OFF A MEAL FOR THAT EVENING  
WITH TICKET PURCHASE. TABLES MUST BE BOOKED IN ADVANCE.  
CONTACT THEM DIRECTLY FOR DETAILS AND BOOKING.

01647 252394 • INFO@NOBODYINN.CO.UK

LIMITED PARKING AVAILABLE AT THE NOBODY INN.



## Teign Valley & Haldon Hill Mission Community

The Teign Valley & Haldon Hill Mission Community includes the parishes of Ashton, Bridford, Christow, Doddiscombsleigh, Dunchideock and Dunsford.

Revd. Ruth Frampton (Rector) - 01647 253164 or [tvhhrectory@yahoo.com](mailto:tvhhrectory@yahoo.com)

### **Pastoral Care**

If you would like, or know someone who would be glad of, a call or “virtual” visit from Revd. Ruth or another member of the church community or from an Anna Chaplain, please contact the rectory (contact details above), or the Churches’ Administrator (see *Getting in touch...* below).

### **Sunday Services**

There is a 9am telephone service each Sunday - you do not need internet access, just a landline or mobile telephone. Between 5 and 10 minutes before the service begins, please dial 0333 011 0616 and enter the code 334 7721, followed by the # key, when asked. The cost of the call is the standard cost for any 01, 02 or 03 number, but will vary according to your telephone contract. If you miss the Sunday sermon, catch up by phone. Call local number 01647 407047 to listen during the following week.

All our church buildings are open for public worship and details are provided in the separate schedule of services or see the “A Church Near You” website for your parish (search for e.g. “A Church Near You Bridford”).

### **Lent Course – “Come and See” – Wednesday 1 April**

Open to anyone, whether mature Christians or seeking. The course is based on watching sections of the well-known series about the life of Jesus – called *The Chosen*. The final session is on Wednesday 1 April at Teign Valley Community Hall, from 6:00pm to 7:30pm. See <https://watch.thechosen.tv> for details about *The Chosen*.

### **Special Easter Services:**

Don’t miss the opportunity to prepare for, and celebrate Easter...

30 Mar	Monday of Holy Week	6:00pm	Telephone	Evening Prayer
31 Mar	Tuesday of Holy Week	6:00pm	Telephone	Evening Prayer
1 Apr	Wednesday of Holy Week	6:00pm	Telephone	Evening Prayer
2 Apr	Maundy Thursday	6:00pm	Ashton	Eucharist and Washing of Feet
3 Apr	Good Friday	10:30am	Christow	Good Friday Passion
		3:00pm	Bridford	Good Friday Meditation & Prayers
		6:00pm	Dunsford	The Cross of Christ (music and readings)

5 Apr	Easter Day	9:00am	Telephone Service
		10:30am	Ashton <i>with Bridford</i> Holy Communion
		10:30am	Christow Holy Communion
		10:30am	Doddiscombsleigh Holy Communion
		10:30am	Dunchideock Holy Communion
		10:30am	Dunsford Holy Communion

### ***Teatime Service – Sunday 19 April at St Mary’s Dunsford***

The gentle Teatime Service is in St Mary’s Dunsford on Sunday 19 April at 3pm – a short, interactive service for older people and their carers, followed by tea and cake and chat.

### ***Villages Prayer – 21 April***

An opportunity each month to join together specifically to pray for our world, our communities, our churches and those we know. Everyone is welcome. We normally meet to pray on the 3rd Tuesday of each month between 5pm and 6pm. The next meeting will be on 21 April at Stonehouse, Village Road, Christow, EX6 7NF. Please contact Rev’d Ruth (details above) or the Churches’ Administrator (details below) if you have requests for prayer.

### ***Messy Church – Saturday 25 April at Dunsford Village Hall***

Don’t miss an afternoon of fun, food and a Bible story for all primary age children (and at least one parent!) – 3pm to 5pm. Please note the venue this month is Dunsford Village Hall.

### ***Forest Church – Sunday 26 April***

This is a monthly opportunity to explore outdoor spirituality, for all the family, at 4pm in Ashton Village Orchard (behind the Village Hall). Bring a camp chair or rug to sit on if you can, everyone of all ages is welcome, dogs too!

### ***Annual Parochial Church Meetings (APCMs)***

Each year every parish in the Church of England holds a Parish Meeting to elect Churchwardens for the coming year and an Annual Parochial Church Meeting (APCM) to elect members to the Parish Church Council, review the past year and make other important decisions. Please do attend - it’s an opportunity for your voice to be heard in the running of your local church The dates for this year’s APCMs are as follows:

Ashton – 23 April at 7.30pm in the Village Hall

Bridford – 9 April at 2pm in church

Christow – 19 April at 11.30am in church after the Sunday service

Doddiscombsleigh – 21 April at 7.30pm in church

Dunchideock – 12 April at 11.30am in church after the Sunday service

Dunsford – 28 April at 7.30pm in church

## **Scattered Church – Home Communion – Monday 27 April**

Rev'd Ruth will be taking home communion to those who are not able to attend church. If you would like to arrange a visit, please contact Rev'd Ruth (details above).

### **Getting in touch...**

If you wish to discuss plans for a baptism/christening, banns of marriage, wedding, funeral, interment of ashes or memorial service, or have any other enquiry, please contact Steve Cook, the Churches' Administrator, on 01392 832332 or email [tvhchurches@gmail.com](mailto:tvhchurches@gmail.com)

---

## **News from Christow WI**

Who doesn't love a cup of tea? Did you know that tea is made from the leaves of the *Camellia sinensis* var. *sinensis* bush? Initially consumed in China during the Tang dynasty it was introduced into Europe in 17<sup>th</sup> century becoming popular in the 1800's when Britain started growing it in India and Ceylon (now called Sri Lanka). Tea is the second most popular beverage in the world the first being water. In many countries it is culturally significant from afternoon tea in Europe to Traditional tea ceremonies in other cultures such as Japan and tea comes in many forms such as matcha and herbal and many colours such as white, black and green.

If you love tea or just want to find out more, come to our meeting on Thursday 9<sup>th</sup> April at 2pm at Teign Valley Community Hall in Christow. Jo Harper will be our speaker from "Dartmoor Estate Tea", a small tea farm nestled in the foothills of Dartmoor on the outskirts of Ashburton. Just down the road from here. Jo and Kathryn Harper started growing tea there in 2015. He says it was an experiment to see how well it would grow. At the time he was a nurse with no farming experience, no idea how to plant, or look after tea bushes and certainly no idea what fine tea should taste like or whether they could produce it on Dartmoor. The talk covers the highs and lows of how tea changed their lives and how deeply special it was for them to drink tea. Expect to leave our meeting knowing a lot more about tea.

If you wish to come as a guest, please bring £5 in cash and enjoy the talk and refreshments provided. Of course, ladies if you like what you see you can always join us on the day. I think you will find that we are a sociable bunch always open to making new friends.

For more information contact us at [christowwi@gmail.com](mailto:christowwi@gmail.com)

**Anne Rice**

## Services in the Teign Valley and Haldon Hill Mission Community

April	Time	Details
<b>1</b> Wednesday of Holy Week	6:00pm	<b>Scattered Church by Telephone</b> - Service of the Word
<b>2</b> Maundy Thursday	6:00pm	<b>St John the Baptist, Ashton</b> - Maundy Thursday Eucharist and Washing of Feet
<b>3</b> Good Friday	10:30am	<b>St James, Christow</b> - Good Friday Passion
	3:00pm	<b>St Thomas Becket, Bridford</b> - Good Friday Meditation and Prayers
	6:00pm	<b>St Mary, Dunsford</b> - Good Friday Musical Meditation
<b>5</b> Easter Sunday	9:00am	<b>Scattered Church by Telephone</b> - Service of the Word
	10:30am	<b>St John the Baptist, Ashton</b> - Holy Communion (with Bridford)
	10:30am	<b>St James, Christow</b> - Holy Communion
	10:30am	<b>St Michael, Doddiscombsleigh</b> - Holy Communion
	10:30am	<b>St Michael &amp; All Angels, Dunchideock</b> - Holy Communion
	10:30am	<b>St Mary, Dunsford</b> - Holy Communion
<b>12</b> Easter 2	9:00am	<b>Scattered Church by Telephone</b> - Service of the Word
	10:30am	<b>St Thomas Becket, Bridford</b> - Holy Communion
	10:30am	<b>St Michael &amp; All Angels, Dunchideock</b> - Holy Communion (to be followed by APCM annual meeting)
	10:30am	<b>St Mary, Dunsford</b> - Service of the Word
<b>19</b> Easter 3	9:00am	<b>Scattered Church by Telephone</b> - Service of the Word
	10:30am	<b>St James, Christow</b> - Holy Communion
	10:30am	<b>St Michael, Doddiscombsleigh</b> - Holy Communion
	10:30am	<b>St Mary, Dunsford</b> - Service of the Word
	3:00pm	<b>St Mary, Dunsford</b> - Tea Time Service
<b>25</b> Easter 3	3:00pm	<b>Dunsford Village Hall</b> - Messy Church
<b>26</b> Easter 4	9:00am	<b>Scattered Church by Telephone</b> - Service of the Word
	10:30am	<b>St Michael &amp; All Angels, Dunchideock</b> - Mission Community Holy Communion
	10:30am	<b>St Mary, Dunsford</b> - Service of the Word
	4:00pm	<b>The Mission Community</b> - Forest Church

For telephone services, please dial 0333 011 0616 and enter the code 334 7721, followed by #



# Robert Williams

SALES | LETTINGS | AUCTIONS

**Selling and letting property in  
Exeter and surrounding towns and  
villages for over 25 years.**

Our best in class service is highly rated  
by our customers with an average Google  
review score of 4.9/5

Contact us to arrange a free market  
appraisal.

01392 204800

[sales@robertwilliams.co.uk](mailto:sales@robertwilliams.co.uk)

[www.robertwilliams.co.uk](http://www.robertwilliams.co.uk)

# PASSMORE PLASTERING



- PRIVATE & COMMERCIAL
- FREE ESTIMATES & ADVICE
- 30 YEARS EXPERIENCE
- INTERNAL PLASTERING
- EXTERNAL RENDERING
- TRADITIONAL LIME PLASTERING
- NO V A T

148 TOPSHAM ROAD

t: 01392 432872 / m: 07952 643513



Your Teignbridge  
Estate Agent

Office: 01626 242 499  
Mobile: 07506 104952  
[james.taylor@theagencyuk.com](mailto:james.taylor@theagencyuk.com)  
[www.theagencyuk.com](http://www.theagencyuk.com)

This is the new way to move home. This is property selling & searching without the stress. This is the time saving, customer focused solution to not just selling but also helping you find your new home.

I'm James Taylor, bringing a modern, bespoke, one to one estate agency service to Teignbridge.

If you're thinking of moving in the next 12 months,  
I would love to hear from you.

*James Taylor*

James Taylor  
Partner

Property **Sold** Properly



LS ELECTRICAL

Local, friendly, certified electrician  
covering all your domestic,  
commercial and industrial needs.



Lee Scholfield

07872 065 874

lee@lselectrical.org



**KIWI**



**PAINTING  
& MAINTENANCE  
& RESTORATION WORK**

Quality Assured Reliable & Honest Local Tradesman

Call Rick: 07837 220637 | 01392 258452

Email: warwick.farrar@yahoo.com

## Foot Health Practitioner

S.A.C Dip F.H.P O.A Dip FHP

S.A.C Dip F.H.P.T / DipCFHP



All aspects of foot healthcare including ingrown toenails, corns, callas, verrucae, diabetic care, fungal infections, etc in the comfort of your own home.

Exeter to Starcross area

Contact Katie Baker on

**07413 796677**



## Mr Chimleys



**IAN RAE**

Local Chimney Sweep

Ide, Nr Exeter  
07581 216044

mrchimleys@gmail.com



**Shillingford**  
organics

*The Farm on Exeter's Doorstep*

**Organic Vegetable  
Boxes & Online  
Farm Shop**

**10% OFF**

**YOUR FIRST BOX!**

with discount code: **DOORSTEP**

Valid for veg and fruit boxes only,  
extra items not included

[shillingfordorganics.co.uk](http://shillingfordorganics.co.uk)

COUNTRYHEATDIRECT.CO.UK

ENQUIRIES@COUNTRYHEAT.CO.UK

**CountryHeat**

01392 811 597



Wood, multi-fuel, pellet and gas stoves. Chimney work. Liners, Twin wall systems, & stove maintenance.

IDE, EXETER.

FREE QUOTATIONS



Valerie Overton - Cahill

Professional Practitioner with over 25  
years experience

Treat Your Feet  
Reflexology

- Foot
- Hand
- Facial
- Lymphatic Drainage

07472 105356

tyflexology@gmail.com



## WANT TO ADVERTISE IN COUNTRY NEWS?

...and reach every household  
in Dunchideock and Shillingford?  
(10 editions a year  
and a circulation of 360)

**COUNTRY NEWS**

SEPTEMBER 2025

Parish Magazine of

*Shillingford St George and Dunchideock*

Full A5 page - £144

Half A5 page - £72

Quarter A5 page - £36

Please contact 01392832332 or  
countrynewsadvertising@gmail.com

## BOYCES NURSERY

*YOUR LOCAL HANGING BASKET AND PLANT SPECIALISTS*

Our range now includes Shrubs, Perennials and Herbs  
Horticultural Sundries  
Fresh and Frozen Soft Fruit

Boyce's, New Barn Farm, Shillingford St. George, EX2 9QR

**\*\*\* OPENING HOURS\*\*\***

March onwards...

Open 12pm-5pm Thursday, Friday, Saturday & Sunday

Closed Monday, Tuesday & Wednesday

[www.boyces-manstree.co.uk](http://www.boyces-manstree.co.uk)

TEL - 01392 832218

## TEIGN VALLEY MEN'S SHED

Teign Valley Men's Shed will be open **every Thursday during April** from **09:30 to 12:30**. If you are already a member, look out for an email or WhatsApp message just in case we have to cancel, or contact the email address below.

The Shed is located at Embercombe in Higher Ashton, EX6 7QQ – on the first floor of the large building just beyond the main car park. Coffee and tea will be available. Transport is available if required – a minibus (courtesy of Acorn) is available most weeks, at a cost of £5 per week. See contact details below.

### ***What are Men's Sheds?***

"Sheds" are kitted-out community spaces where men can enjoy practical hobbies. They're about making friends, learning and sharing skills - and for a bit of banter over a cup of coffee or tea. The current focus is on woodwork. If you have skills to share, or you have very little or no experience and want to learn, then you will be very welcome! There is an annual membership fee of £10, and a session fee of £5 for each session.

## **Everyone is welcome!**

**Don't miss an opportunity to meet new friends and learn/share some practical skills.**

**Email: [teignvalleyshed@gmail.com](mailto:teignvalleyshed@gmail.com)**

---

### **Janet Travell**

Thank you for all your thoughts, prayers & offers of help after Mum - Janet Travell - died in March. Having been editor of this Mag for years, plus on Dunchideock Parish Council, in the local WI, on Dunchideock village hall committee and more over the 47 years she lived here, I know she touched many of your lives and not just mine. I am writing this in advance of her funeral on the 30<sup>th</sup> March, 2.30pm at Exeter Crematorium, followed by (in her words) 'a good bunfight', so I would like to thank those who came/are coming (depending on when this gets around) for your company on a very sad day for me and the rest of my family. If this gets out in time, please do not come wearing black!

**Judith Travell**

## **Dunchideock Parish Council**

The Parish Council met on Monday 9th March, draft minutes are on our website, <https://www.dunchideock.net/>

To highlight a few points from the meeting:

- We've now appointed an Auditor for the annual process that starts in April
- Our finances are satisfactory with the present balance being £15,258.55 of which £3,400 is earmarked for specific items, such as the £1,100 reserved for maintenance of our four Public Rights of Way.
- The two new notice boards have now arrived, and The Lord Haldon Hotel has very kindly agreed to install them free of charge. What a wonderful gesture to the village. By the time you're reading this, I think both will have been erected, one near Dunchideock bridge at the junction with School Lane and the other at Underdown.
- We now own the phone box and will review the maintenance and use later this year. Any suggestions to any of your Councillors please - see website.
- We have asked Devon Highways to replace the Dunchideock road signs (on the roadside at the edge of the parish) but we know Highways are especially involved in pothole work at present, some of which you'll have seen on our own roads.
- We're still trying to recruit a Parish Clerk and also fill the two vacancies on the Council; details, see web site.

Our next meeting will be on 11th May in the Village Hall, starting with the Annual Parish Meeting (see note in May Country News).

**Dudley Swain, Chairman**  
01392 833353 or  
[clerk@dunchideock-pc.gov.uk](mailto:clerk@dunchideock-pc.gov.uk)

## Dunchideock History Society (DHS)

**SUNDAY, 12 APRIL 2026**

**A GUIDED TOUR OF HALDON BELVEDERE**

**TIME: 2.30pm**

Entrance by booking only to  
email: [belvederehaldon@gmail.com](mailto:belvederehaldon@gmail.com)

Parking at the castle, car share where possible.  
Members and non-members will be able to  
enjoy a tour of the Castle, including Refreshments  
and delicious cakes. See the stunning views from  
the roof terrace (weather permitting) and the new  
Museum in the Lawrence Hall (ground floor).

No Charge: The Devon Historic Buildings Trust  
(owners) will be pleased to receive donations  
on the day.

Become a **Friend of Haldon Belvedere**  
Dunchideock History Society Members £2 p.a.  
Non Members £5 p.a.



### Open Gardens at Haldon Grange

Peaceful, well established 19-acre garden, parts dating back to 1770s. This hidden gem boasts one of the largest collections of rhododendrons, azaleas, magnolias and camellias. Interspersed with mature and rare trees and complemented by a lake and cascading ponds. 6-acre arboretum, large lilac circle, wisteria pergola with views over Woodbury completes this family run treasure. Plant sale, tea, coffee and cake. Admission £6 (cash only) or £3 for children. No dogs. Visitors are welcome to bring a picnic. For more information please contact 01392 832329.

	<b>Opening for Hospiscare 10:30-13:00</b>	<b>Opening for NGS 13:00-17:00</b>
<b>April</b>	Mon 6 <sup>th</sup> , Sun 26 <sup>th</sup>	Sat 4 <sup>th</sup> , Sun 5 <sup>th</sup> , Mon 6 <sup>th</sup> , Sat 11 <sup>th</sup> , Sun 12 <sup>th</sup> , Sat 18 <sup>th</sup> , Sun 19 <sup>th</sup> , Sat 25 <sup>th</sup> , Sun 26 <sup>th</sup>
<b>May</b>	Sun 17 <sup>th</sup> , Mon 25 <sup>th</sup>	Sat 2 <sup>nd</sup> , Sun 3 <sup>rd</sup> , Mon 4 <sup>th</sup> , Sat 9 <sup>th</sup> , Sun 10 <sup>th</sup> , Sat 16 <sup>th</sup> , Sun 17 <sup>th</sup> , Sat 23 <sup>rd</sup> , Sun 24 <sup>th</sup> , Mon 25 <sup>th</sup> , Sat 30 <sup>th</sup> , Sun 31 <sup>st</sup>
<b>June</b>	Sun 7 <sup>th</sup>	Sat 6 <sup>th</sup> , Sun 7 <sup>th</sup>

## Dunchideock Village Hall Events

Registered Charity No. 301096.

### APRIL 2026:

**Thursday 2<sup>nd</sup>, 9<sup>th</sup>, 16<sup>th</sup>, 23<sup>rd</sup> & 30<sup>th</sup> April: Cardio Drumming at 18:00.** Enjoy music, improve cardio fitness, develop drumming skills and experience amazing feelings of wellbeing. £10 per session. Call Tamsin on 07891 861881.

**Friday 10<sup>th</sup> & 24<sup>th</sup> April : Singing Villagers at 17:30-18:30.** An informal singing group focussing on well-known songs with simple harmonies . No audition necessary. £1 charge to cover hall expenses.

**Friday 17<sup>th</sup> April: Film Night. *The Choral*, at 18.45 for a 19:15 start.** A choral society's male members enlist in World War I, leaving the demanding Dr. Guthrie to recruit teenagers. Together, they experience the joy of singing while the young boys grapple with their impending conscription into the army. £5 Admittance includes tea/coffee and biscuits. Extra charge for ice cream and bar. Organised by Ray Mallett and Lee Curio.

**Wednesday 29<sup>th</sup> April: Garden Design Talk: 19:30-21:00. Bar open from 18:30. The design process explained to help you design or improve your garden, by Landscape Architect Leslie Pearman.** £5 on the door. This will be an introductory talk on how to design a garden and guidelines to help decide on garden style, planting and features. Later in the year there will be 4 classes to help you design or improve your own garden. For further information contact **Sally on 07712 465442.**

### MAY 2026:

**Thursday 7<sup>th</sup>, 14<sup>th</sup>, 21<sup>st</sup> & 28<sup>th</sup> May: Cardio Drumming at 18:00.** Enjoy music, improve cardio fitness, develop drumming skills and experience amazing feelings of wellbeing. £10 per session. Call Tamsin on 07891 861881.

**Monday 11<sup>th</sup> May: Parish Council Meeting at 19:30**

**Friday 15<sup>th</sup> May: *Into the Breach* at Dunchideock Village Hall. Doors open at 19:00 for a 19:30 start. Tickets £10.** A wonderful comedy written and performed by Mark Carey and produced by the Stratford Theatre Company. Contact **Sally on 07712 465442** to reserve tickets. Early booking recommended. (See poster and critics review)

**Friday 22<sup>nd</sup> May: Film Night at 18:45 for a 19:15 start. (Film to be confirmed).** £5 Admittance includes tea/coffee and biscuits. Extra charge for ice cream and bar. Organised by Ray Mallett and Lee Curio.

## **Review of 'Into the Breach':**

A wonderful comedy written and performed by Mark Carey and produced by the Stratford Theatre Company.

George Crocker is keen to liven up his dull life, so he decides to join the village Drama Club hoping to play the pantomime dame. What happens next turns his world upside down and instead he finds himself taking on the role of Henry V!

Set during the Second World War this original, inspiring show is suitable for everyone and with one actor playing all 17 parts you can guarantee it's going to be a hoot!

As a member of the Royal National Theatre Company Mark Carey worked on *Betrayal*, *The Relapse* and *The Merchant of Venice* all for Trevor Nunn and has had many appearances on TV in such shows as *The Invincibles*, *Widows*, *Murphy's Law*, *Underbelly*, *London's Burning* and most recently *Doctors* and *Luther*. Mark's many radio appearances include *Wuthering Heights*, *Ashes to Antarctica*, *The Kingsnorth Six*, and *The Archers*.

"The quality of acting and writing is as good as any you will see. A deep and nuanced story. Every character drips with personality and charm." **The Cheltenham Standard**

"A great little show. It's "Dads' Army meets "The Vicar of Dibley". **London Metro**

"A delight, a lovely and very humorous play that fully merited the standing ovation." **Stratford Herald**

"Mark Carey shows amazing dexterity and comic skill in playing all 17 parts." **The Stage**



**STRATFORD THEATRE COMPANY PROUDLY PRESENTS  
THE WONDERFUL COMEDY**

# **INTO THE BREACH**

**GEORGE CROCKER  
JOINS HIS VILLAGE  
DRAMA CLUB TO LIVEN UP HIS LIFE.  
WHAT HAPPENS NEXT TURNS HIS WORLD UPSIDE DOWN.**

**"A REMARKABLE AND HIGHLY ORIGINAL PIECE OF THEATRE"  
BATH ECHO**

**"DAD'S ARMY MEETS  
THE VICAR OF DIBLEY"**

**LONDON METRO**

**"THIS SHOW WILL MAKE YOU  
LAUGH, CRY AND ENJOY A  
DEBATE ON SHAKESPEARE"  
STRATFORD HERALD**

**DUNCHIDEOCK VILLAGE HALL  
15 MAY 2026 7.30PM**

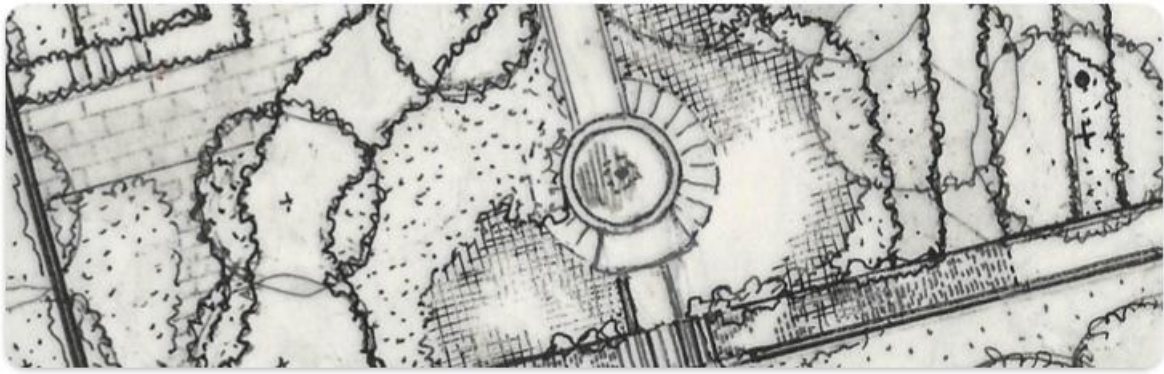
**BAR OPEN 7PM**

**£10 - FOR TICKETS CONTACT SALLY ON 07712 465442  
ONLINE BOOKING VIA QR CODE OR AT  
[WWW.BUYTICKETS.AT/STRATFORDTHEATRECOMPANY](http://WWW.BUYTICKETS.AT/STRATFORDTHEATRECOMPANY)  
[WWW.STRATFORDTHEATRECOMPANY.ORG.UK](http://WWW.STRATFORDTHEATRECOMPANY.ORG.UK)**



# Garden Design Talk

The design process explained  
to help you design or improve your garden  
by Landscape Architect Leslie Pearman



Wed 29 April 7.30-9pm  
Dunchideock Village Hall

Bar open 6.30pm

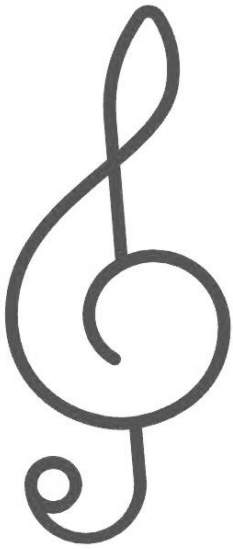
£5 on the door

An introductory talk on how to design a garden and guidelines to help decide on garden style, planting and features. Later in the year there will be 4 classes to help you design or improve your own garden

For more info contact Sally on 07712 465442



Dunchideock Village Hall



# Singing Villagers

with Tamsin.

An informal singing group focussing on well known songs with simple harmonies. The emphasis is purely upon enjoying the benefits of group singing. No audition is necessary.

We meet up generally twice a month  
on a Friday 5.30-6.30

! The bar will be open!  
£1 to cover hall expenses

Call Tamsin - 07891 861881  
if you'd like to reserve a space.

Registered charity no.301096

# Tower Open Day!



**BELLRINGING**

Come and give bellringing a try...

- ✓ Great exercise
- ✓ Age 10+ can join
- ✓ All faiths and none
- ✓ Make new friends
- ✓ No need to be strong
- ✓ No need to be musical

**Where?**

Christow, St James church

**What date?**

Saturday 2nd May

**What time?**

Any time between 12noon and 4pm

**More info**

Learn about church bellringing and perhaps have a go. All ages welcome.

[wearebellringing.org](http://wearebellringing.org)



# *The Garden Room*

A warm welcome awaits you in  
The Garden Room  
**The Lord Haldon Country Hotel**  
Dunchideock, EX6 7YF

◆ ◆ ◆ ◆ ◆  
For Coffee, Cake and Good company!

◆ ◆ ◆ ◆ ◆  
Tuesday 7<sup>th</sup> & 21<sup>st</sup> April 2026

◆ ◆ ◆ ◆ ◆  
From 10:30 am until 12:00 midday

◆ ◆ ◆ ◆ ◆  
Everyone Welcome!

Lifts available if required please contact:

Anne Taylor: 01392 833282

Or Shirley Phillips: 07503 183224

Tea/Coffee: £1.80

Cake: £1.80

---

## **Prime Numbers Answer**

The six prime factors of 39270 are 2, 3, 5, 7, 11, 17

$$39270 = 2 \times 3 \times 5 \times 7 \times 11 \times 17$$

## Villages Diary

Date	Time	Event	Place
<b>April</b>			
Wed 1	10:30-12:00	Open Door Café	Shillingford Village Hall
Thu 2	18:00	Cardio Drumming	Dunchideock Village Hall
Sun 5	09:30	Easter – Holy Communion	Shillingford Church
Sun 5	10:30	Easter – Holy Communion	Dunchideock Church
Tue 7	10:30-12:00	<i>The Garden Room</i> Coffee Morning	Lord Haldon Hotel
Thu 9	14:00	Christow WI – <i>Dartmoor Estate Tea</i>	TVCH, Christow
Thu 9	18:00	Cardio Drumming	Dunchideock Village Hall
Fri 10	17:30-18:30	Singing Villagers	Dunchideock Village Hall
Fri 10	18:45 for 19:00	Whist	Shillingford Village Hall
Sat 11	10:30-12:00	The Exchange	Shillingford Village Hall
Sun 12	11:30	Dunchideock Annual Parochial Church Meeting	Dunchideock Church
Sun 12	14:30	Guided tour of Haldon Belvedere	Haldon Belvedere
Mon 13	19:30	Shillingford St. George Parish Council – Annual Parish Meeting	Shillingford Village Hall
Wed 15	10:30-12:00	Open Door Café	Shillingford Village Hall
Thu 16	18:00	Cardio Drumming	Dunchideock Village Hall
Fri 17	18:45 for 19:00	Whist	Shillingford Village Hall
Fri 17	18:45 for 19:15	Film Night – <i>The Choral</i>	Dunchideock Village Hall
Fri 17	Doors open 19:30	<i>Devnent</i>	Doddiscombsleigh Church
Tue 21	10:30-12:00	<i>The Garden Room</i> Coffee Morning	Lord Haldon Hotel
Tue 21	19:45	<i>Friends of Shillingford Wood</i> AGM	Shillingford Village Hall
Thu 23	18:00	Cardio Drumming	Dunchideock Village Hall
Fri 24	17:30-18:30	Singing Villagers	Dunchideock Village Hall
Fri 24	18:45 for 19:00	Whist	Shillingford Village Hall
Sun 26	09:30	St. George – Patronal Festival Holy Communion	Shillingford Church
Mon 27	19:00	St. George's Supper	Shillingford Village Hall
Wed 29	10:30-12:00	Open Door Café	Shillingford Village Hall
Wed 29	19:30-21:00	Garden Design talk	Dunchideock Village Hall
Thu 30	18:00	Cardio Drumming	Dunchideock Village Hall
<b>May</b>			
Fri 1	18:45 for 19:00	Whist	Shillingford Village Hall
Sat 2	12:00-16:00	Bellringing – Tower Open Day	Christow Church
Thu 7	18:00	Cardio Drumming	Dunchideock Village Hall
Mon 11	19:30	Dunchideock Parish Council – Annual Parish Meeting	Dunchideock Village Hall
Thu 14	18:00	Cardio Drumming	Dunchideock Village Hall
Fri 15	19:00 for 19:30	Play – <i>Into the Breach</i>	Dunchideock Village Hall
Mon 18	19:30	Shillingford Local History Society – AGM and talk <i>From Topsham to the Poles: the tale of HMS Terror</i>	Shillingford Village Hall
Thu 21	18:00	Cardio Drumming	Dunchideock Village Hall
Fri 22	18:45 for 19:15	Film Night – film to be confirmed	Dunchideock Village Hall
Thu 28	18:00	Cardio Drumming	Dunchideock Village Hall

## Shillingford St George & Shillingford Abbot

Rector:  
(day off Thursday)      Revd. Mike Partridge, The Rectory, Alphington,  
EX2 8XJ. Tel: 01392 491476 or 07751 725306  
Email: [rector@alphingtonstmichaels.org](mailto:rector@alphingtonstmichaels.org)

Churchwarden:      Nick Mansell  
Tel: 01392 832660  
Email: [sa5632@btinternet.com](mailto:sa5632@btinternet.com)

### Dunchideock

Rector:  
(day off Thursday)      Revd. Ruth Frampton, The Rectory, Christow,  
EX6 7PE. Tel: 01647 253164  
Email: [tvhhrefactory@yahoo.com](mailto:tvhhrefactory@yahoo.com)

Churchwarden:      Tina Cook  
Email: [tinamcook@btinternet.com](mailto:tinamcook@btinternet.com)

Churches Administrator:      Steve Cook  
Tel: 01392 832332  
Email: [tvhchurches@gmail.com](mailto:tvhchurches@gmail.com)

### Country News

Editors for April:      Tam Mucklow and Edmund Gooch

Editor for May:      Andrew Phillips (01392 833416)  
[andrewpphillips27@hotmail.com](mailto:andrewpphillips27@hotmail.com)

Front Cover:      Judith Travell (01392 832600)  
[jhtravell@hotmail.com](mailto:jhtravell@hotmail.com)

Advertising Editor:      Laura  
[countrynewsadvertising@gmail.com](mailto:countrynewsadvertising@gmail.com)

Treasurer:      Steve Cook (01392 832332)  
[tvhchurches@gmail.com](mailto:tvhchurches@gmail.com)

Main Distributors:      Peter & Liz Wareham and Tina Cook

**Articles for inclusion in the May edition of *Country News* must be passed to the Editor by 15 April.** Contributors should bear in mind that the magazine is formatted as 14-point text at A4 page size, then reduced to A5 for printing.

Classified Adverts: £2 for up to three lines (for one issue).

Box Adverts (10 issues per year):

Full page £19, or £144 per annum

Half page £10, or £72 per annum

Quarter page £5, or £36 per annum

Please apply to Laura (advertising editor) – see above.