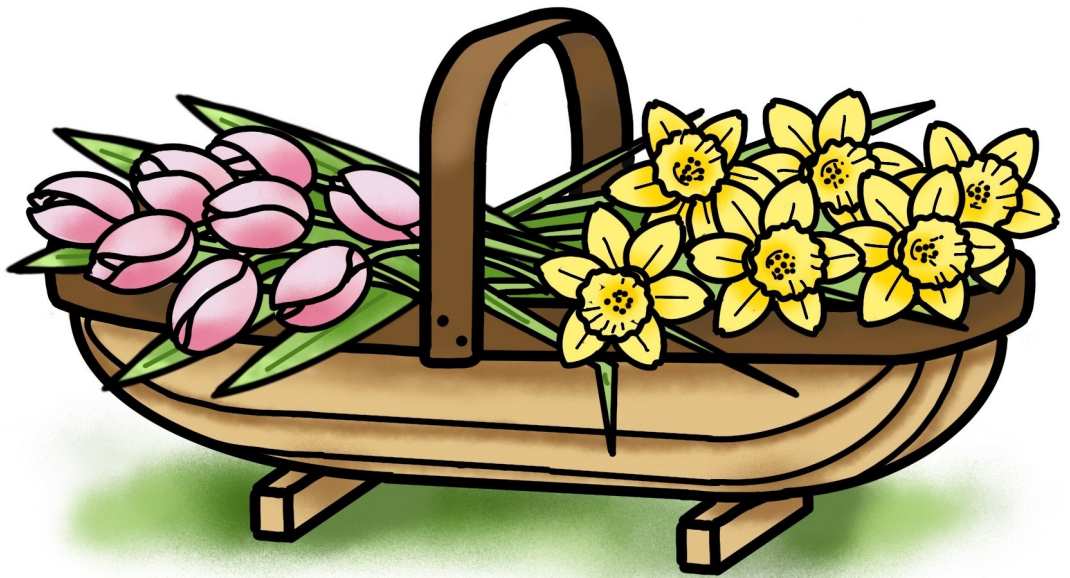


Grasmere and Rydal Parish Magazine

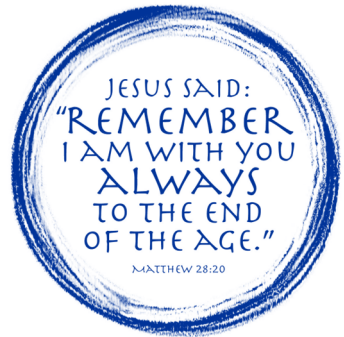


April & May
2026

From The Vicarage

Dear Friends,

As I write, the world feels close. The news is not distant or abstract; it presses in with images of conflict and stories of loss. It leaves many of us wondering what it means to live well, and faithfully, in the midst of it all.



In a recent sermon we paused with Jesus in Bethany, at the home of Mary and Martha. Jesus arrives at the home after the death of their friend Lazarus.

Bethany is a village of mourning. In the Middle Eastern world of the text, grief is a public matter. Jesus arrives at a community carrying loss together.

Before anything is resolved, before any words of hope are spoken, we are given that brief and piercing moment: "Jesus wept."

That detail matters. It tells us that God's response to suffering is not to stand apart from it, nor to explain it away, but to enter into it. God meets us within the reality of grief.

This has something to say not only about the suffering we see in the world, but also about the tensions we carry much closer to home. Relationships can become strained. Words can land badly. Silences can grow where there was once ease. In these moments, it is easy either to withdraw or to try to tidy things up too quickly with explanations.

Yet the pattern of Christ suggests something more attentive. He remains present. He honours the weight of what is felt. He does not rush past it. Neighbourliness begins there. It is less about getting things right and more about being willing to remain with one another, especially when things are not straightforward. It asks something of us: patience, humility, a readiness to listen again.

In that space, there is also the slow and often fragile work of rebuilding trust. Trust is not restored in a single gesture. It grows through small acts that are repeated over time. It depends on honesty, but also on a willingness to believe that the other is more than the moment of difficulty.

And alongside trust sits belonging. To belong is to know that we are not defined solely by our failures or misunderstandings. It is to be received again, even after things have been strained. The life of a parish, at its best, offers that kind of welcome—one that makes room for repair.

The story of Lazarus does not end at the tomb. After he is called out, Jesus turns to those gathered and says, “Unbind him, and let him go.” The work of restoration is shared.

So it is with us. We are drawn into the task of loosening what holds one another fast—old hurts, suspicion, distance—and making space for life to take shape again.

With every blessing for the season ahead,

Lawrence

Rota for Sidespersons

5th Apr	TREVOR & HELEN EASTES
12th Apr	DON PERRITT & DAVID DODGSON
19th Apr	SONIA RICKMAN & PAT TAYLOR
26th Apr	DAVID & ANN JACKMAN
3rd May	GERRY & ANNE RAWCLIFFE
10th May	DON PERRITT & DAVID DODGSON
17th May	SONIA RICKMAN & PAT TAYLOR
24th May	TREVOR & HELEN EASTES
31st May	DAVID & ANN JACKMAN

Getting to Know Your Lay Minister in Training

I'd like to introduce myself. I'm David Spiby, and I'm training to be a licensed lay minister here at Grasmere and Rydal. My wife Debby and I have lived in Troutbeck for the past eight years, and I love being outdoors – whether that's walking, mountain biking, golf, photography or gardening. Though I have to admit, my outdoor activities have taken a bit of a back seat since I started my training!



You may have heard the term "lay reader" – it's the same thing. As a lay reader, my role is to assist our Rector, Lawrence Basham, with whatever needs doing. That might mean helping to lead services or prayer meetings, speaking, or lending a hand in any way I can. There's a lot to learn during the two-year training, which has three main elements:

First, I'm here to serve Lawrence and our churches in Grasmere and Rydal. Second, every Tuesday evening I attend Emmanuel Theological College in Penrith, plus there's a full day of study on Mondays. And third, five times a year I head to Preston for Saturday workshops focusing on "spiritual formation" – learning more about faith, prayer, worship and service.

I'm quite intrigued by this spiritual formation piece, as I was born and grew up in Preston. So I was physically formed there, and now I'm being spiritually formed in the same place. Who would have thought Preston could make such an impact!

Outside of training, I'm also a trustee of the Penny Conservation Charity, which provides grants for environmental projects across Cumbria. Debby and I have two adult daughters – one lives in Kendal, and the other is married and settled in Edinburgh. If you see me around, please do stop and introduce yourself. I always love to meet new people and make connections in our community.

Music Note

There are several events coming up in April and May.

On **Maundy Thursday, 2nd April at 7.00 p.m.** there will be a Sung Eucharist with the St Oswald Voices, to mark the institution of the Lord's Supper.

On **Rogation Sunday, 10th May at 4.00 p.m.** members of Keswick Choral Society will sing Choral Evensong, including music by Sir Arthur Somervell, who is buried at Grasmere.

There are two organ concerts in May:

Wednesday 20th at 1.00 p.m. David Pipe, recently appointed as Director of Music at Cartmel Priory, will give an organ recital, followed by the A.G.M. of the Cumbrian Society of Organists.

Thursday 21st at 12.00 noon Lake District Music are sponsoring a concert by the Svyati Duo, which consists of Rebecca Hepplewhite (cello) and Julian Collings (organ).

As always, it is hoped that residents and visitors will support these occasions.

Ian Hare

Books Needed

If you have any spare books please pass them on to St Oswald's church, we would be very happy to receive them.

There is a second hand bookshop raising money for church activities.

Please leave any books at the back of the church near the bookstall. Thank you

Grasmere PCC





2 April – Maundy Thursday

7:00 pm – Sung Eucharist at St Oswald's

3 April – Good Friday

1:30 pm – Service at Moss Parrock

2:00–3:00 pm – Final Hour at the Cross

4 April – Easter Saturday

8:30 pm – Easter Vigil at Rydal Hall Chapel

5 April – Easter Sunday

6:00 am – Sunrise Vigil at St Oswald's (with breakfast)

9:30 am – Holy Communion at St Mary's, Rydal

11:00 am – Easter Celebration at St Oswald's



Parish Administrator – Grasmere & Rydal

The Parish of Grasmere & Rydal is seeking a part-time

Parish Administrator

to support the day-to-day life of our church community.

This is a varied and rewarding role at the heart of parish life, working closely with the Rector and a friendly, committed team. The Parish Administrator will be a key point of contact, helping to ensure that services, events, and the wider ministry of the church run smoothly.

Responsibilities include general administration, supporting weddings, baptisms and funerals, managing bookings, and assisting with parish communications and records.

The role is for 16 - 20 hours per week, with flexibility in how these hours are worked.

It would suit someone who is well organised, approachable, and able to work both independently and as part of a team. A willingness to support the life and mission of the church is essential.

This is a lovely opportunity to contribute to a growing and welcoming parish community in Grasmere & Rydal.

For an informal conversation about the role, or to request an application form please contact Rev Lawrence Basham (07891001592 - lawrencebasham@gmail.com)

St Oswald's Grasmere

BEATING THE BOUNDS

Sunday, 17 May 2026.

Please join us to Beat the Bounds, as we mark the parish boundary with both a fell run and a walk around the lake.

Fell runners will meet at St Oswald's Church at 07:45 and depart at 08:00, while walkers will meet at 11:00 and depart at 11:15. All will return to the church at 13:00 for cake, music, and fellowship.

Note: Sticks will be provided!

All are welcome to join the walk; fell runners by invitation.

Fell Running Route
to include:
Fairfield → Steel
Fell → Blea Rigg →
Silver Howe →
return.

Walking Route:
Clockwise circuit of
the lake.



If you have any
questions, please reach
out to Matty Jackman or
Rev. Basham



St Mary's Church, Rydal.

The church building is open during the day for visits from locals and visitors.

It is a place for prayer and reflection. There are prayer cards you can fill in and these will be prayed at the daily prayer times in Rydal chapel. The church gardens are cared for by the Rydal Hall estates team.

There is a celebration path of stones engraved for your own remembrance. Please see www.achurchnearyou.com Rydal St Mary's for further details if you would like one.

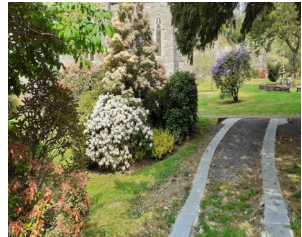
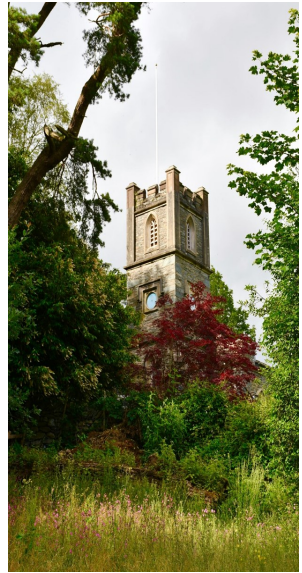
The benches in the garden are wearing out and some are too rotten to be used. It is the plan to replace them and maybe place some new ones to facilitate space for people to enjoy what we call the Millenium garden . Please contact www.achurchnearyou.com Rydal St Mary's If you would like to contribute to the new garden benches .

Grasmere and Rydal Parish Events

Parish meal Sunday 10th May 12.30 pm

in Grasmere village Hall. All welcome. Details opposite

Parish Annual General meeting on Sunday 19th April 12.00





Please join us at the

May Parish Meal

ALL WELCOME

10th May 2026

12.30pm

The Village Hall

Tickets from Barney's from

22nd April 2026

BYOB and DONATIONS WELCOME

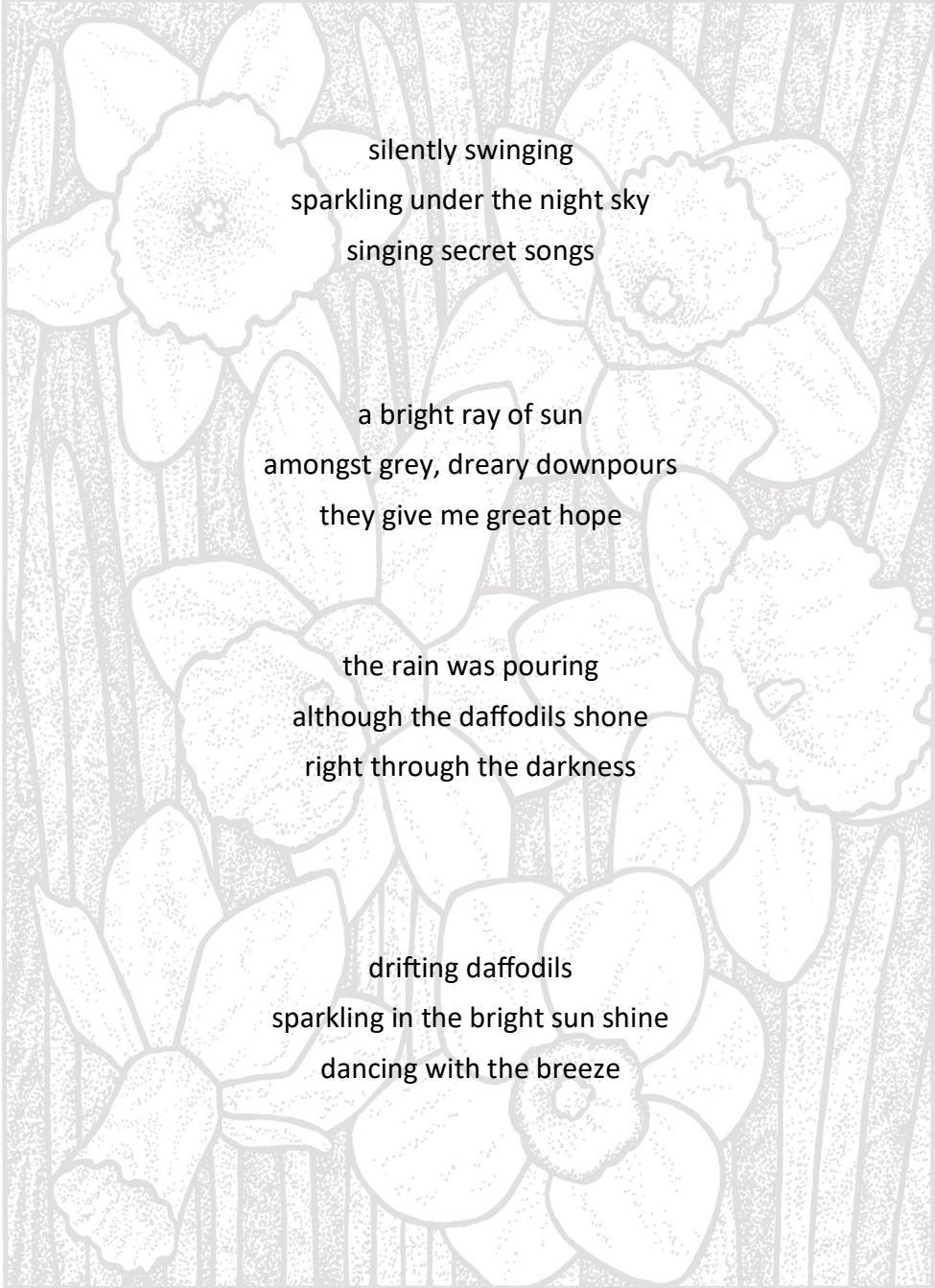


GRASMERE SCHOOL

This month the pupils have been writing Haikus. A Haiku is a Japanese poem formed in three lines with 17 syllables and arranged in a pattern of 5-7-5. It is often associated with nature.

daffodils dancing
harmony of trumpets
gleaming in the breeze

pale gold daffodils
play in the glowing moonlight
fluttering ghostly



silently swinging
sparkling under the night sky
singing secret songs

a bright ray of sun
amongst grey, dreary downpours
they give me great hope

the rain was pouring
although the daffodils shone
right through the darkness

drifting daffodils
sparkling in the bright sun shine
dancing with the breeze

Grasmere Village Hall

We are delighted to report the final total raised from our Grand Christmas Raffle - **£4,406** - which is to be shared between the Hall and the Grasmere Red Squirrel Group. A brilliant total! Thank you to everyone who donated prizes or bought or sold tickets. The Trustees would also like to thank everyone who attended our AGM and stayed for a chat over cheese and wine – your support and input is much appreciated.

The Village Hall Cinema is going from strength to strength! In February we screened a singalong version of “The Greatest Showman” complete with ice cream and popcorn. We’d like to thank all those who responded to our cinema survey – we will note your responses and use them to inform future film choices, so keep an eye out for details of our next show!

In March we enjoyed a night of swing and dance with the fantastic Kendal Big Band. Thank you to all 18 band members who put on a marvellous show and got everyone dancing. Big thanks also to everyone who helped with arrangements and contributed food to the delicious buffet!

Coffee & Chat – Every Wednesday 10:00 am – 12:30 pm

The regular coffee mornings will be continuing until the end of April with a break over the Easter period when the Hall will be hosting the annual Cumbria Local Arts exhibition. There will be no coffee morning on 1 or 8 April but we shall return on **15 April**. Everyone is very welcome!

Sunday 19 April, 6.30 pm: Concert by jazz trio EMRYS who are embarking on a walking and music tour of the Lake District, trekking across the fells and giving concerts each evening along the way. Free entry, donations welcome, refreshments available, doors open 6.00 pm. Anyone is welcome to join them on their walks too. Further details and seat booking at www.emrysmusic.com

Thursday 14 May, 7.30 pm: multi-award winning comedian musician David Eagle will be performing his latest show *Flying Solo*. David is a member of folk band The Young'uns and has his own BBC Radio 4 series *Eagle on the Air*. He has great reviews: "A ludicrously amusing gentleman" (Miles Jupp); "A comic tour de force" (The Guardian); so it promises to be a very entertaining evening. Tickets £15 adult, £10 under 25s, available at www.highlightsnorth.co.uk



Thursday 4, Friday 5 & Saturday 6, Thursday 11, Friday 12 & Saturday 13 June: Grasmere Players present their summer production of Agatha Christie's tense thriller "***And Then There Were None***". Further details will be available nearer the time.

Don't forget to sign up and support us by using Easyfundraising - a fantastic online platform that enables you to raise free donations with every purchase you make. There are over 8,000 participating retailers, ranging from your food shop at Tesco, booking a holiday with Booking.com to taking out insurance on Compare the Market. Sign up here: <http://efraising.org/rWHiZTgHZI> A big thank you to our existing supporters!

Social media: To keep up to date with events, please follow us on our social media sites. We appreciate your feedback about our events:



@GrasmereVillageHall or

@grasmerevillagehall



Email: enquiries@grasmerehall.org.uk

Grasmere and Cumbria Weather

January was a typical winter month, with spells of mild and cold weather with frequent frosts and a little snow. The mild weather that had dominated December was swept away early in Jan. as cold westerlies became frosty but sunny. Snow showers did affect the Lake District early on the 6th. with snowfall logged at Ambleside, 6cms. and 3.6 cms. in Grasmere. Frost was severe on several nights, with temperatures falling below minus 10.C. at Bewcastle, Grisedale and Shap on the 5th.

A depression on the 9th. brought blizzard conditions to the Midlands, but the next depression followed a more northerly track and much milder weather swept north across Cumbria on the 11th., accompanied by spells of heavy rain. By mid-month a broad, westerly flow covered Cumbria, with showers and near normal temps. Then pressure built strongly across eastern Europe on the 20th. and this proved to be the start of an exceptionally long spell of south easterly winds across Cumbria, which persisted until mid-February.

Atlantic fronts approaching from the west became slow moving across the UK. due to the blocking high over Europe, so the weather became persistently damp and cloudy. With shelter from the Pennines, rainfall amounts were modest, but the weather here was grey and dull on many days. Then cold easterlies from Scandinavia brought a short, cold brighter spell around the 26th, but again milder southerly winds returned on the 28th. with yet more light rain and grey skies. Mean temperatures in January were a little below normal, due to the cold spell in the first 10 days.

Rainfall amounts were generally below average, with less than 65% falling in places as far apart as Seaton and Shap. Just six sites in Cumbria recorded above average totals in January. River flows declined compared to December, and reservoir stocks remained healthy at 90%, slightly above average for the time of year. Nearer home, both Grasmere and Rydal were both completely frozen over on the 10th, of the month, not a common occurrence these days.

Wettest January day 11th. 41.2 mm. 1.62 inches

Total for month 240.1 mm. 9.45 inches, last year 7.75 inches. Average 10.72 inches

January rain days 24. Last year 21

February had very few fine days. The miserable winter is finally near its end, when St. David's day brings the official start of meteorological Spring on March 1st. Again, as in January, cool, cloudy, dark, damp days returned on dominant south easterlies, with very few bright spells. An area of high pressure over Scandinavia for the past few weeks has forced low pressure systems to remain over Cumbria, leading to low cloud, wind and precipitation. These conditions resulted in 52 consecutive days from January 9th. until March 2nd. where not one day was completely dry.



The unsettled February weather continued until the 13th. when suddenly the sun became visible for about half an hour at 3pm. This was followed on the next day with a hard frost minus 6. centigrade , then snow falling on low ground for the second time this winter with a depth of 2 cms. However, south westerlies soon returned bringing milder conditions and longer spells of heavier rain, and strong winds until the month's end. All in all another month to forget. Surprisingly, this winter to date has not proven to be a record breaker for rain, but rainfall has been 35% above the long term average in England. Don't forget, if you're out walking and you can see your breath, you'll know the temperature is less than 40 degrees F. and if you're walking with the wind behind you, low pressure is always on your left hand side!

Unfortunately, the rainfall network with volunteer observers is dwindling. From its peak of over 5000 gauges in 1970, our network size has declined considerably over the last 50 years. There are now around 2300 sites left today. At the current rate, there may be no rain gauges left in 35 to 40 years time. The decline continues today, with around 1 rain gauge (net) lost every week in the U.K. All these contributions are invaluable for many purposes.

Wettest February day 25th. 31.6mm. 1.24 inches

Rain days for month 23 (all 0.2 mm. or above) Last year 14

Total for month 210.6mm. 8.29 inches Last year 7.37 inches. Average. 7.65 inches. Rain days to date for year 47 Last year 35

Rainfall to date 450.7 mm. 17.74 inches Last year 15.08 inches

Peter Bailey



April already and Spring has truly sprung. Along with the flowers and blossom village visitor numbers are increasing dramatically, and all are very welcome. Unfortunately this also exacerbates a never ending litter problem. A planned Wombles litter pick at the end of March should have the village looking spick and span by the time you read this. The Pinfold has also been tidied up and the Wordsworth fountain cleaned and switched back on. We are also delighted that the Tenters' footpath (which links the A591 near the catholic church with the village at the Pinfold) has been resurfaced.

The new footpath link at the back of the Broadgate Meadow car park has been made and this completes the Jubilee walk around the village with disabled access and approved by *Miles without Stiles*. The Easedale Road path requires some upgrading to prevent large puddles forming when it rains and once this has been done the walk will be officially opened.

The GVS AGM and cheese and wine social evening was held in March and a good time was had by all. I am delighted to report that the committee has all agreed to remain in post although we are still looking for a new secretary. There must be somebody out there who would enjoy this post, at the same time helping the village through our aims and commitments. The Society constitution lists 15 objectives but principally the Society was established (in the 1970's) to stimulate public interest in the village, to promote high standards of village planning and architecture and to secure the preservation, protection, development and improvement of features of historic or public interest. If the post of secretary is of interest then please contact myself or any committee member.

The council lease on **Moss Parrock** has lapsed and after negotiation with the National Trust the GVS has agreed to take on the lease. This will allow us to carry out a number of improvements that we have in mind, ranging from drainage, paths, benches and a central position on the Green to accommodate a large Christmas tree each year.

The pothole situation in the village seems to be going from bad to worse. The more reports that are made to the council the better so please go online or pick up your phone and make a complaint. Online reporting is preferred, to www.westmorlandandfurness.gov.uk

We are always on the lookout for new Society members and of course we want to retain existing members. If you would like to join (for the princely sum of £1) or if you have not yet renewed, then please contact our membership secretary Simon Hey: [si-monhey4@gmail.com](mailto:simonhey4@gmail.com) or 015394 35067

Nick McCraith

Coffee and Chat

10.00am to 12.30pm

Every Wednesday

(except 1st and 8th April)

Come and join us in the Village Hall

EVERYONE WELCOME



GRASMERE WI

Our **February** meeting was with our very own Sally Smith talking about Working Dogs. Sally is an expert in everything dogs and dog training, it was a fascinating and inspiring afternoon.

In **February** our Art Group visited the Walker Art Gallery in Liverpool and enjoyed both the Turner and the John Moore's prize winners exhibition. We also staged an Antiques Valuation Day at Tweedies with Mitchells Auctioneers, Cockermouth in aid of St Mary's Hospice. It was a really interesting and good fun afternoon, raising over £300. Big thanks to Tweedies for the wonderful hosting and to everyone who supported the event.

By popular demand, **February** saw (for the sixth year running) the return of our Annual Stepping Challenge for our charity the wonderful St Mary's Hospice. It's such a brilliant, good fun challenge (9,000 steps a day) raising much needed funds for the Hospice. This year we raised over £10,000, a truly remarkable total. Big thanks to all who joined in the challenge and for all the donations. Very special thanks to Nicole and Malcolm Thorogood for their incredibly generous donation. Our overall fundraising for St Mary's now exceeds a truly staggering £50,000.



Our **March** meeting was our **2026 AGM** with the excellent Federation WI Shop and a great fun 'get to know each other better' session. Who would have thought AGMs could be such good fun! It was a great afternoon, celebrating our **104 GWI members**, we're now the biggest WI in the Cumbria Westmorland Federation - just amazing!



GWI Committee Members with their '104 members' celebration cake

At the AGM, Myra McCraith stood down from the Committee after an incredible 20 years. Huge thanks and a long service award to Myra, we appreciate all that you have done (and still do!) for GWI. We are delighted that Hayley Davidson has joined our Committee, bringing her energy, enthusiasm and ideas to the team. GWI President Louise Sykes made a special '104 members' celebration cake (with lots of help from M&S!)

Also in **March** our GWI Garden Group had a brilliant Snowdrops event at Holehird with our very own Hayley Davidson and Galanthus expert Pat Murphy. We were interested to hear that a Golden Tears Galanthus recently sold for £1,800. We all dashed home to check our snowdrop collections! We also held another excellent Blooming Fibres workshop at Allan Bank with Wendy Ann Stanger. Also in **March**, after a winter pause, our **GWI Cumbria Way Challenge** started up again with the stage from Borrowdale to Old Dungeon Ghyll, Langdale taking us to 51 miles ticked off, just 28 miles left.

Looking ahead.....

Our **April Meeting** is on **Thursday 9 April 2pm** at Wordsworth Grasmere with a talk on Vikings in the Lake District. Also in April we are having a tour of Blackwell and Broad Leys with cream tea.

Our **May meeting** is on **Thursday 14 May 2pm** at the Village Hall with Abi Palmer giving us her expert talk "An Introduction to Anne Lister". There will also be our very popular plant and preserve swap with proceeds to St Mary's Hospice. Also in May, our GWI Garden Group are visiting Abbotsford, home of Walter Scott and our GWI Craft Group are having a Fused Glass Workshop at Allan Bank with the excellent Roxy Denny.

In addition to all of this, here are a few of our other regular activities. Our monthly Book / Culture Group at Allan Bank is a huge success, with a packed attendance and lively discussion in Wordsworth's study. We also have our very popular monthly rambles, fabulous practical Art Group sessions, weekly GWI Strong kettlebell classes with our local personal trainer Libby Dixon (we are getting stronger every week!), weekly GWI Badminton, GWI Craft and Garden Groups and the list goes on! A huge thanks to all of our 104 members for making Grasmere WI such a vibrant, friendly and fun group.

Come and join in the fun, you will be made very welcome.

Louise Sykes, President Grasmere WI

T: 07860 299658

E: clsmailbox@icloud.com

Gardening

Out of the blue

During the pandemic of 2020, I discovered a love of gardening brought on by a sudden need to provide for the family. The garden was an area I sat in whilst my husband nurtured and maintained it. Suddenly having more time and limited opportunities saw me hunting through 'that' kitchen drawer full of little oddities that don't belong elsewhere. Those out-of-date seeds were the start of personal growth.

I visited Holehird Gardens for the first time and I was amazed that anyone could grow all these plants without sunshine! I started to volunteer at Holehird and mentored by Pat Murphy who looks after the National Collection of Meconopsis (Himalayan blue poppy.) Meconopsis is a genus of over 80 species of short-lived or monocarpic perennials, which flower once then die.

They grow best in the cooler wetter areas of Northern England and Scotland and even a few days of bright sunny conditions will scorch plants in unsuitable sites. You see where I'm going here...

After a few weeks Pat asked me to weed the meconopsis bed. I was terrified... what if I'd weeded out young plants? I grew with them, watched them bloom, drawing the crowds, collected the seeds and helped lift and divide some larger plants in autumn. I felt ready to grow meconopsis in our garden in Grasmere. What I learned very quickly is that when they die back you have no clue where they are. One plant survived the winter, so I bought a few more and they bloomed magnificently that year. I had this amazing idea of putting wooden eco labels in the ground by the plants. But the ones the dog didn't chew the weather dissolved!

Yet again I feared I must have weeded them out over winter. Last year I planted ten Meconopsis Lingholm, which is known as one of the easier varieties to grow. We decided to put them in the rose bed, where roses were struggling for some reason. The same reason the meconopsis loved it? I labelled them, fed them, didn't plant bulbs on top of them, and as if by magic, they survived.

I'm a meconopsis mum!

The best time to view meconopsis is late May into June. They continue to grow at Lingholm estate, the birthplace of the variety. Holehird holds the most southerly national collection.

Hayley Davidson, Holehird Volunteer & Grasmere WI



Wordsworth

GRASMERE

We are open Tuesday-Saturday 10am-4pm. Don't forget entry is free to Grasmere residents and workers – we look forward to seeing you soon!

What We Treasure: Art out of the Archive (ends 6 June)

Our new interactive exhibition celebrates the treasures of the Wordsworth Grasmere trove. Discover grand landscapes by Constable and Turner, a hasty sketch by Dorothy Wordsworth, dramatic watercolours and rarely displayed objects that spark wonder, curiosity and affection.

Make & Play: Easter (31 March 10.30am-12.30pm)

Spring has sprung, come along and celebrate! We will paint, craft, dress up and play, all inspired by the poetry and journals of William and Dorothy Wordsworth. Create a rainbow suncatcher, a pair of bug-spotter binoculars, or make a mask to pose in our Animal Parade!



For families with children of all ages. Free event, no need to book, just drop in.

Easter Egg Trail (28 March - 11 April, free with admission)

Explore the Garden-Orchard and Woodland on our Georgian Tea Party themed Easter Egg Trail and win a prize! Discover the eggs hidden around Dove Cottage's site and help William and Dorothy gather everything they need to throw a lovely Easter tea party.



Earth Day (18 April)

Come along to Wordsworth Grasmere for free Earth Day events. We'll be using poetry as a medium to explore nature and environmental crises; join us for a creative writing workshop at 10am and a poetry performance at 2.30pm.

The Poetry Business International Book & Pamphlet Competition 2025 Winners' Launch (11 April, 1.30-3.30pm). Join The Poetry Business at Wordsworth Grasmere to celebrate the winners of the 2025 International Book & Pamphlet Competition, chosen by Kim Moore. The winners Ian Harker and Annina Zheng-Hardy will be reading poems from their prize-winning pamphlets, alongside the competition runners-up, Sally Baker and Ilse Pedler.

Little Wanderers, our creative play sessions for under 5s, takes place every Thursday morning at 10.15am during term time. Free for all families. We thank Grasmere School & Nursery for supporting this event.

Discover Poetry with Polly Atkin and Dove Cottage Poets, our poetry reading and writing groups, continue to take place on Zoom and as a hybrid meeting respectively.

For more information and to book please visit wordsworth.org.uk

Hannah Catterall, Events Officer, Wordsworth Grasmere

Grasmere Diary - April 2026

2	Maundy Thursday Choral Evensong	St Oswald's	7pm
3	Good Friday	Moss Parrock	1.30pm
4	Easter Vigil	St Oswald's Rydal Hall	2-3pm 8.30pm
5	Sunrise Celebration		5.30am
	Sunday Celebration: Holy Communion	Rydal St Oswald's	9.30am 11am
9	WI Book Group	VH Zoom	2pm 8pm
12	Sunday Celebration Open Church	Rydal St Oswald's	9.30am 11am
19	Sunday Celebration Holy Communion	Rydal St Oswald's	9.30am 11am
	APCM EMRYS Jazz	St Oswald's VH	12 noon 6.30pm
26	Sunday Celebration: Open Church	St Oswald's	11am

Grasmere Diary- May 2026

2	Ambleside Choral	Ambleside Parish Church	7.30pm
3	Sunday Celebration: Holy Communion Taize	Rydal Hall St Oswald's St Mary's Rydal	9.30am 11am 7pm
10	Rogation Sunday Open Church Parish Meal	Rydal St Oswalds' VH	9.30am 11am 12.30pm
14	WI Book Group David Eagle	VH Zoom VH	2pm 8pm 7.30pm
17	Beating The Bounds Parish Walk	St Oswald's Grasmere	9.30am 11.15pm
20	Organ Recital	St Oswald's	1pm
21	LDMS	St Oswald's	12 noon
24	Sunday Celebration: Open Church	Rydal Hall St Oswald's	9.30am 11am
31	I Sunday Celebration Holy Communion	Rydal Hall St Oswald's	9.30am 11am

Week Day Services Tuesday 11am Holy Communion

Thursday 2.30pm Quiet Half Hour

Coffee & Chat Every Wednesday 10:00 am – 12:30 pm VH

Knit and Nat Every month 2nd & 4th Tues Reading Room 2pm

Rydal Mount's Future Secured



We are delighted to announce that the future of Rydal Mount, the final home of world-renowned poet William Wordsworth, has been secured thanks to a landmark acquisition by the Wordsworth Trust, working in partnership with The Julia Rausing Trust and the Charlotte Aitken Trust.

Rydal Mount, located about two miles from Dove Cottage, is where William, Dorothy and Mary Wordsworth lived for much of their adult lives. The house was acquired by the poet's descendants in 1969, and the family have since opened it to the public for over 50 years. Over time, the Wordsworth family found it increasingly difficult to manage Rydal Mount from a distance and in 2025 they made the difficult decision to put it on the market.

Over the last year the Wordsworth Trust has been working with the Wordsworth family and with funders to secure Rydal Mount's future. We are now delighted to share that, thanks to the generous support of The Julia Rausing Trust and the Charlotte Aitken Trust, ownership of Rydal Mount has been transferred to the Wordsworth Trust.

We are now working with our funders and potential partners to explore sustainable models for Rydal Mount's future operation. The Wordsworth Trust has a long history of protecting and sharing the Wordsworths' heritage in the Lake District: Rydal Mount presents us with an incredible opportunity to further inspire and benefit the public for generations to come. Much like Dove Cottage, Rydal Mount is a place that nurtured the Wordsworths' imaginations, creativity and enduring connection with the natural world.

You can read more about Rydal Mount on our website – [wordsworth.org.uk/rydalmount](https://www.wordsworth.org.uk/rydalmount)

Michael McGregor, Wordsworth Trust Director

Rydal Mount: A Reminiscence

It was a misty morning in March this year, no view of Loughrigg or of Rydal, just drizzle on the willow buds, a robin sitting on the branch of a laurel, a blackbird singing from somewhere. I'd spent the night at Rydal Mount, actually sleeping in the bedroom that had been William and Mary Wordsworth's room. I'd spent the evening with some of the poet's descendants, sitting in front of a log fire in the drawing room, eating Thai takeaway curries, drinking rather good wine. And now there were two enormous



removal vans in the space beside the garden fence where tour coaches used to drop off parties of American and Japanese visitors. The Wordsworths were moving out of what was essentially their family home, and I was saying goodbye, too.

For a dozen years or so I worked for Christopher and Simon, the great great great great grandsons of the poet, who had inherited the house from their grandmother, Mary Henderson. She had bought it in 1969; when William lived there (for 37 years, the best part of his life) he was only a tenant. Rydal Mount became both a family home, where the Wordsworths would spend Christmas, and visit throughout the year, as well as a significant tourist attraction, a place of literary pilgrimage.

The curators when I first worked there were Peter and Marian Elkington, who actually lived in that house for 25 years, before retiring back to their native South Africa. My brief was to help promote the house, raise its profile, and organise events that would bring in more visitors. Now, with the house safely secured for the future, I'm about to see the publication of my book, *Rydal Mount: The Story of Wordsworth's Home* (Gritstone Publishing, probably in late summer). It has been a joy to write, a privilege to work with and talk to some wonderful people. You, dear readers, are so fortunate to have this beautiful house and gardens on your doorstep, and it will soon be open to the public again.

Eileen Jones is a journalist and author who runs Cumbria PR. She's the author of Loughrigg: Tales of a Small Mountain, and two books about parkrun.

Grasmere Players Present

A n d
T h e n
T h e r e
W e r e
N o n e

BY AGATHA CHRISTIE

4TH, 5TH, 6TH 11TH, 12TH, 13TH

JUNE 2026

Grasmere Village Hall

TICKETS ON SALE SOON

@GRASMEREPLAYERS

And Then There Were None by Agatha Christie is to be presented by arrangement with Concord Theatricals Ltd on behalf of Samuel French Ltd. All rights reserved. This amateur production will be presented by arrangement with Agatha Christie Ltd.



Ambleside & District Choral Society

Life & Light

7.30pm, Saturday May 2nd, St Mary's Parish Church, Ambleside

Gabriel Fauré - Requiem Op. 48
John Rutter - Magnificat

Rachel Little - Soprano
Terence Ayebare - Baritone
Lonsdale Ensemble
Conductor Marco Giudici

Tickets (including a glass of wine): £16/£18; 16-21s £8; children free
Available at amblesidechoralsociety.org.uk, or from
Fred's Bookshop, Choir Members or at the door



Save the date! Sunday 30 August 2026

This year there will be a 50% discount for Grasmere locals, if you buy an early bird ticket through our website, GrasmereSports.com. Please use the code Local2026 at checkout and your ticket price will be halved.

For people who aren't especially keen on the internet, you can also visit the Sports Pavilion to claim a discounted "locals ticket" at two times:

- Monday July 20th 7am - 10am
- Saturday July 25th 8am - 12 noon

We are also hoping to work more closely with the Reading Room this year, so that they can get some much-needed extra income from drink sales. Graham & Becky Magennis are kindly putting a wall-gap between the Sports Field and the Reading Room, and I have donated an iron gate and some gravel.

In other news, we are actively recruiting more Grasmere residents onto the Committee: Libby Dixon is joining to help with the fell race, and Mel Brood is joining to oversee field preparations. If you are interested in volunteering / getting more involved please call me on 07840 059561.

Paul Abbott, Chair, Grasmere Sports
Mobile - 07840059561

Knit & Nat

Spring has sprung and our thoughts at Knit and Nat have reflected on our various projects to date. Charity knitting isn't the only accomplished thing we do. Knitting isn't the only craft we create! Crocheting and embroidery are being shared/instructed within the group. Carol G is superb with anything crafty; with helpful hints and good advice for us starting a new discipline. Shirley E's jacket is a wonder to behold. Jenny H's filly cuff, ideal for the sleeve for a toddler's cardie. New member Rebecca F's child's cardigan with flower buttons is awesome.

We meet twice a month on the 2nd and 4th Tuesday between 2pm and 4pm at the Reading Rooms near the millennium bridge.

They are drop-in sessions - no membership fee needed, just a donation towards costs. Refreshments freely available - You would be most welcome to join us. Further information contact :

Sharon at 07957073255 or Savasi @hotmail.co.uk





Grasmere Book Group

In February, the group travelled back to 1901 and the dawn of Edwardian London amidst a world of barristers and judges in Sally Smith's crime debut *A Case of Mice and Murder*. Barrister Sir Gabriel Ward KC is tasked with sleuthing, following the murder of the Lord Chief Justice in the Inner Temple. Ward has a good line in cross-examination but admits to being an amateur when flexing other detecting muscles. The group enjoyed the setting at the Inns of Court and felt it added a unique atmosphere. Some of the plotting and the conclusion felt disappointing although overall the group enjoyed a solid read. There was definite interest in Smith's sequel, *A Case of Life and Limb*.

For March, we read Andrew Miller's recent Booker-shortlisted novel, *The Land in Winter* set in the West Country in the winter of 1962/3. Some found it bleak whilst others enjoyed its detailed historical setting and character development. There was much to discuss, considering its portrait of isolation, generational and class dynamics and to what extent this was a pivotal moment in Britain (or made its case for one). One member did mention that it paled in comparison to Tolstoy's *War and Peace*, which just shows the high standards we have for literary fiction.

Looking ahead: On April 9th we'll be discussing Freya Stark 1930s travel-memoir *The Valleys of the Assassins*, exploring the Iran-Iraq border. On May 14th we'll return to fiction with Kazuo Ishiguro's 1989 novel *The Remains of the Day*.

Book group meets online at 8pm on the second Thursday of every month. All are welcome to join... do email us and we can send you a Zoom link. All book group books are available from Sam Read's at 10% discount off the r.r.p.



Kate and Siobhan are already making tracks into April's reading

Polly and Will – dr.will.smith@me.com

Parish Magazine

The meeting at Allan Bank on 1st March for the Parish Magazine was our chance to say, 'Thank you' to the many of you who either write for, or deliver, the magazine. We value your contribution, and feedback!

If you would like to help in any way do please do get in touch!

Ann and David Jackman

Editors

editor@oswaldparish.news

MAINS WATER COMES TO UNDER LOUGHRIGG

Walkers have had the tranquility and ease of their walk along the Under Loughrigg Lane from Ambleside to Rydal disturbed since the New Year by extensive ground works along the lane near Pelter Bridge. United Utilities commenced work on 7 January, digging a deep trench from the drive from Loughrigg and Spring Cottage which slowly extended back to the second cattle grid from the bridge. Other work near the bridge and the ferrying of material from there down the lane soon turned part of the road into what was more like a muddy footpath. The plastic barriers often fell over so walking along became a bit of an obstacle course. What was going on?

It became a little clearer when a blue water pipe was laid along the bottom of the trench. They must be replacing the water main remarked one walker peering down – what was wrong with the old one? Well, there wasn't one. It may come as a surprise but the properties along this part of the lane were all reliant on private supplies.



When I bought Spring Cottage in 1989 I was so taken by the cottage and its setting that I rather ignored the hosepipe slung along the back wall which I was told was the private water supply to the attic tank. This came from a spring and stream just above the cottage. Other springs along the same line served other properties. The name Spring Cottage comes from these rather than the season.

The next summer, however, the water dried up and the solution then was to have water delivered in a milk tanker after it had finished its morning round. As each tanker load was soon used up I had to look for other solutions.

A few years later I installed a borehole which was used as back up on average for about 2 weeks each year when the spring supply gave up. Other properties followed suit. There were periodic discussions between owners as to whether mains water could be installed, especially after a water main was brought across the river, but these fizzled out. Last year, however, spurred on by a threatened big price hike by United Utilities and the prospect of drier summers fuelled by climate change, the owners of all 16 properties got together again. A deal was struck and in October a pipe was installed across the field from Pelter Bridge in readiness. Work then started in earnest on 7 January and we were fortunate with the weather. Apart from one wet spell at the start which resulted in some barriers floating away down the river the lane remained above the water and the barriers finally came down by 9 February.

That is, however, only part of the story, as owners have had to invest heavily in then installing the water into their properties. The local bedrock has at times defied the water industry regulation 750mm depth for pipe-work with other solutions having to be found. Here at Spring Cottage mains water was finally connected on 30 January with other properties following suit as work is completed.

Water now comes from Thirlmere and Haweswater instead of the rough fellside above. I have mixed emotions about that but at least I should now be able to enjoy long sunny spells in the summer without checking the forecast for rain, safe in the knowledge that Thirlmere will never run dry, or so we hope. As for walkers, peace and tranquility should soon return with extra stones having been placed along the road between the cattle grids to prevent it being used as a car park on sunny days.

Steven Marsh, Spring Cottage, Under Loughrigg.

RYDAL HOUSES - A HISTORY

As we welcome Rydal village into our parish magazine we are beginning a series of articles looking into the history of houses in Rydal. This edition we focus on:

Field Foot

There has been a dwelling at the place on Under Loughrigg marked “Field Foot” on Ordnance Survey maps for many hundreds of years.

Early documentation is fragmentary, but even the present building includes traces of construction dating back to at least the Eighteenth Century. It would likely have been part of the estate of the original Rydal Hall.



A window in St. Mary's, Rydal dedicated to Dr Wilson Fox

What is well documented is that around 1850 the existing farmhouse was transformed into a large country house by William Dilworth Crewdson, whose family part-owned the Kendal Bank. Although he was annoyed about the building work going on practically next-door, Wordsworth's son in law Edward Quillinan wrote a sonnet called "Field-Foot" when it was finished and concluded happily: "Reluctant nature smooth'd her angry brow / For not a line of savage grace was gone."

Crewdson had married into the Fox family of Wellington, Somerset. Whether or not this was a love match, it was certainly good for business, bringing together two families who owned private banks, and connecting Kendal's wool trade with a fabric manufacturer who supplied uniforms to officers of the British Army.

Through this connection, Field Foot came into the possession of Dr. Wilson Fox, who was one of Queen Victoria's private physicians. Struck by the contrast between the tranquillity of Rydal and living conditions in the cities, Fox offered Field Foot as a place of retreat for distressed clergy working in difficult London parishes. A window in St. Mary's, Rydal is dedicated to him.

Field Foot had several different owners in the Twentieth Century, and was split into five separate houses in 1963. In its heyday as a grand country house it was one of the first in the district to have electricity, mains gas, and a telephone. At the conclusion of the recent work on Under Loughrigg, Field Foot and its neighbours will be among the last to be connected to mains water.

Chris and Siobhan Routledge

Bell Ringing

“The best thing about Christmas was the bell ringing!” Well, that might be exaggeration for effect, but it was very nice to hear. Since our last report, we have made a lot of progress. For the first time in fifteen years, the bells are regularly being rung for services – our ‘maiden voyage’ was the candle-lit carol service, and we are now ringing on Sundays whenever we can.

Despite a dreich winter, a core group of learners has emerged who are making steady progress, and together with Dennis and Graham, we enjoy the warmth of the church and each other’s company on Thursdays at 5pm. The silencers made with Richard Beskeen’s help, out of old motorbike tyres, are a great success and allow extended one-to-one coaching sessions outside our usual practice time.

Bringing the bells to life and enjoying each other’s company has been great fun, and in addition, the bells are serving their original purpose of attracting people into our beautiful and welcoming church. Visitors have attended the Sunday service after hearing the bells, and visitors have braved the claggy weather to satisfy their curiosity about what goes on at a ringing practice.

The enthusiasm of our Grasmere learners has spilled over and we have formed a very warm and friendly collaboration with St Mary’s Ambleside, such that we now (unofficially) call ourselves the Gramblemere Ringers. Our very own Siobhan Routledge, who lives in Rydal, has revived practice night in Ambleside by instituting a popular post-ringing pub tradition.

Projects for the next few months include planning a programme of visits, starting with nearby towers before venturing further afield, and signing learners up to the “Learn to Ring” scheme (with certificates, and prizes...).

If you’d like a go, have rung in the past, or are an active ringer, do come along to St Oswald’s on Thursdays at 5pm or St Mary’s Ambleside on Mondays at 7pm. If you’re available to ring on Sunday between 10:30 and 11 am please do contact me. Looking forward to ringing together, visitors and locals - everyone is welcome!

Kate O’Donoghue dizzy_01_dyer@icloud.com

Gerry and Amanda unhooking the bell ropes ahead of Sunday ringing.



What Are Our Red Squirrels Up To?

A walk through the woods around Grasmere in late spring or early summer may reward you with a delightful sight — the flash of russet fur and a bushy tail as one of our beloved red squirrels darts through the trees.

This time of year is especially busy for red squirrels. By late spring many females are raising their first litter of the year. Mothers build cosy nests known as dreys, high in the branches, using twigs, moss and leaves. Inside, tiny kittens grow quickly before venturing out into the woodland for the first time. Early summer is when young squirrels begin learning essential skills such as climbing, balancing and finding food. You may even spot youngsters chasing their mother through the branches as they practice navigating the treetops.

Grasmere is fortunate to remain part of one of England's last strongholds for red squirrels. Maintaining healthy woodland habitats and supporting conservation efforts helps protect them from threats such as grey squirrels and disease.

By reporting sightings, supporting local conservation work, and caring for our woodland spaces, we can all help ensure that red squirrels remain a treasured part of Grasmere's landscape for years to come.

IF YOU SEE A GREY or a sickly looking red anywhere around Grasmere PLEASE Text: Stuart Dickson 07980 893459, David Birkett 07775 904236, Stewart Sutcliffe 07817 326524, Trevor Cooper 07884 404794; or email grasmerersg@gmail.com

If you would like to donate, please visit <https://bit.ly/3yX6FC5> to donate via PayPal or Bank transfer: Grasmere Red Squirrels | 63002884 | 01-09-75 |

Follow us on Facebook @GrasmereReds

By the Grasmere Red Squirrel Charity

The Cumbrian Challenge returns to Grasmere

Grasmere will once again play host to the Cumbrian Challenge from May 15–17, as leading Armed Forces charity **Walking With The Wounded** (WWTW) brings this well-loved event back to the village for its 14th year.

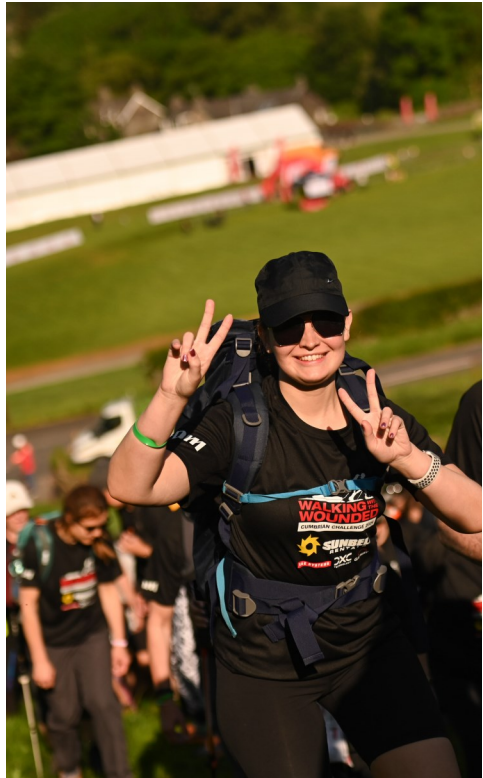
Set against the Fells, the Cumbrian Challenge is WWTW's inaugural fundraising event. Participants can choose from three hiking routes of varying distance and difficulty: the Peak route (12.5km), suitable for those seeking a shorter, less demanding walk; the Tough route (22km), offering a moderate challenge; or the Tougher route (27km), intended for experienced hikers seeking a greater test.

Since its inception in 2013, the event has welcomed thousands of charity supporters to the Lake District, raising over £2.5 million to support veterans and their families. It has also received support from many local businesses and residents, whose support plays a crucial role in the event's success. Residents may notice increased activity in the village during the weekend, and WWTW is grateful for the warm welcome that residents offer each year.

Returning for another edition in May, the Cumbrian Challenge promises to be a weekend filled with good company, friendly competition and all for a good cause. The event welcomes a diverse community of supporters, including corporate sponsors, long-standing fundraisers, veterans, and members of the Armed Forces.

Funds raised go towards supporting WWTW's employment, mental health and wraparound care coordination programmes. These vital programmes provide life-changing support to veterans and their families, ensuring they receive the help they need to rebuild their lives. To find out more or to sign up, visit: www.cumbrian-challenge.walkingwiththewounded.org.uk

To find out about opportunities to feature in our event village, email: fund-raising@wwtw.org.uk





St John's Hospice at The Marchesi Centre, Windermere

We are delighted to announce the arrival of our new **Open Clinics** running **1.30-3.30pm every Tuesday afternoon**. Our specialist, registered professional palliative care team will be providing a range of weekly support services.

Your current programme is:

24 Feb:

Ask your questions of the Director of Nursing

3 March:

Advice Clinic with a St John's Registered Nurse and Social Worker

10 March:

Ask your questions of the Medical Director

17 March:

Complementary Therapy for Palliative Care

24 March:

Managing Fatigue, Anxiety & Breathlessness

31 March:

Managing Bereavement, Grief and Mourning



Free and open to all with life shortening illnesses and their carers. Health professionals welcome too.
No appointments needed.

***This is St John's Hospice Community Care
Caring for the South Lakes for 40 years***

To find out more, call **01524 382538**
or visit **sjhospice.org.uk/southlakes**

**Cultural Landscapes event will take place on
Tuesday 14th April at 6.30pm.**

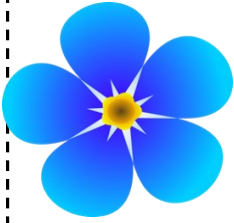
**This will be a talk by Abi Palmer
Cumbria University PhD Student
on:**

**“Never shall we forget Patterdale”: An introduction to
Anne Lister
and her 1824 tour of the Lake District.**

**University of Cumbria in Ambleside, Percival Lecture Theatre,
Langdale Building, LA22 9BB
Event tickets available from Ticket source
<https://www.ticketsource.co.uk/cultural-landscapes/>**



- *Free, confidential advice and help is available from South Lakes Citizens Advice How to access:*
- *Call 015394 46464 (9.30am – 2pm, Monday – Friday)*
- *Drop in sessions at Wainwright's Yard, Kendal, LA9 4DP (10am – 2pm, Tuesday and Thursday)*
- *Adviceline: 0808 2787 984 (9am - 5pm, Mon– Fri)*
- *Email advice via the submission page on our website www.southlakescab.org.uk*



Caring for someone with Dementia? Living with memory loss?

Need help. advice. information, practical tips

Venue: Wesley Room, Ambleside Parish Centre

Next Drop In:

Tuesday 21st April Time: 10.30 – 11.30

Tuesday 19th May: 10.30-- 1.30

Message us for more information

admin@ambleside.org.uk

barratt573@btinternet.com

www.amblesidepc.ork.uk

CONTACTS

St Oswald's Parish Church,

Church Stile, Grasmere LA22 9SW

Rector: Rev Lawrence Basham

lawrencebasham@gmail.com 07891001592

Church warden: Anne Rawcliffe

grasmerewarden@gmail.com

Church Warden Deputy: Jane Robinson (Rydal)

Treasurer: Gerry Rawcliffe

gerry.rawcliffe@btinternet.com

Organist: Mr Ian Hare

017684 83886 ian.c.hare@outlook.com

Church Website: A Church Near You

Methodist Minister:

Grace Cauldwell 07341960506 / 01229 583196

Grace.southlakes@gmail.com

Roman Catholic Priest:

Fr. Ajish Kumpukkal, Mater Amabilis Church,

Ambleside 015394 33027

Quaker: Friend In Residence:

tbc, Glenthorne, Grasmere

Tel: 015394 35389 info@glenthorne.org

URC Minister:

The Rev. Martyn Coe, Carver Church, Windermere

01539 533223

Central Lakes Mission Community Rev. John Dixon

015394 36301 jjcedixon@btinternet.com

wordsworth

GRASMERE

Dove Cottage • Museum • Woodland
Garden • Café • Shop • Family Activities



Open Tuesday-Saturday, 10am-4pm

Free admission for Grasmere residents
and employees of Grasmere businesses