

Good News Parish Magazine

for Eastling, Otterden, Stalisfield and Throwley

www.goodnews.rf.gd



JANUARY 2026

- 8th History Society Christmas meeting
Charing Parish Hall 7.30pm
- 13th Eastling Parish Council Meeting
Stalisfield Village Hall 7.45pm
- 14th Egerton Arts Society
Egerton Millennium Hall 2.30pm
- 15th Warm Welcome
Stalisfield Village Hall 12 - 2.30pm
- 15th Stalisfield Parish Council Meeting
Stalisfield Village Hall 7.45pm
- 20th Deadline for February Good News:
goodnewsmagazine@me.com
- 23rd Together in Boots
Doddington Church leave at 2pm



Warm Welcome Village Social Thursday 15th January

Stalisfield Village Hall 12 - 2.30pm

Join us for social drop-in and stay for coffee, tea and delicious lunch for everyone in the village.

Come to the hall and join an activity, use the wi-fi to work or just have a chat with your friends and neighbours.

Free to all residents of Stalisfield and Otterden.

For some people their path to Christ is short - an epiphany moment, if you will. But the original recipients of an epiphany revelation - the magi - had a very long journey from the moment of seeing the star to that of worshipping at the feet of Jesus. That must have been a long and very difficult journey, with setbacks and temptations to rest a while in the oases, but they persevered and were rewarded for doing so...



Endless Desert?

We cross the endless desert sands
To seek a Royal Son,
We've travelled from our distant lands,
So long since we'd begun.

Oases lie along our way
With cool, clear waters deep;
Their wayside pleasures bid us stay
Therein to sup and sleep.

Yet, drawn by yonder shining star
We rise and take our leave;
Our onward route may yet be far
But we will still believe.

Ignoring pains and tempting calls
To cease our onward trek -
The faithful get up after falls
Their aim no fall can wreck.

At last we reach our journey's end
We meet God's Saviour Son!
Our gifts we offer as we bend -
Our path to life is won!

by Nigel Beeton

Message for the New Year

We live in a warring world. We see this in the local, national and international news. We may also encounter aggression in our everyday lives. As we drive, on the train, in the shops, or even within ourselves.

There was once a king who offered a prize to the artist who could paint the best picture of peace. Many artists tried. The king looked at all the pictures, but there were only two that he really liked, and he had to choose between them.

One picture was of a calm lake. The lake was a perfect mirror for the peaceful towering mountains all around it. Overhead was a blue sky with fluffy white clouds. All who saw this picture thought that it was a perfect picture of peace.

The second picture had mountains, too. But these were rugged and bare. Above was an angry sky from which rain fell, and in which lightening played. Down the side of the mountain tumbled a foaming waterfall. This did not look peaceful at all. But when the king looked, he saw behind the waterfall a tiny bush growing in a crack in the

rock. In the bush a mother bird had built her nest.... a perfect picture of peace.

Which of the pictures won the prize? The king chose the second picture.

Do you know why? "Because," explained the king, "peace does not mean to be in a place where there is no noise, trouble or hard work. Peace means to be in the midst of all those things and still be calm in your heart. That is the real meaning of peace."

Jesus said, "Peace I leave with you; my peace I give to you. I do not give to you as the world gives. Do not let your hearts be troubled, and do not let them be afraid." (John 14:27)

We can know the peace of Jesus. This is more than an absence of hostilities but a deep knowledge that God loves us unconditionally and has accepted us through what Jesus has done for us. This enables us to be at peace with God, people and nature. We just need to ask him.

I pray that you will know more of the peace of Christ in our tumultuous world.

The peace of the Lord be always with you.

David Pickup, a solicitor, considers January.

Going from Strength to Strength – even in January!

Blessed are those whose strength is in you, whose hearts are set on pilgrimage. As they pass through the Valley of Baca, they make it a place of springs; the autumn rains also cover it with pools. They go from strength to strength, till each appears before God in Zion. (Psalm 84: 5-7)

January can be a grim month! Back to work after Christmas, dark days and early nights. Colds, sniffles and bugs, then the bills, renewals and invoices come in. There is not much going on in church, as Candlemas is not until February.

I like the psalms, as they are written from personal experience. This one is a belter and has been called one of the sweetest psalms. I suppose January could be a type of 'valley of Baca' or veil of tears, meaning a difficult time to get through. The psalmist encourages us to look for wells and pools of water even in the driest desert.

Many people have debt or other problems. Perhaps the church could set up a group to support members or look for local sources of advice, foodbanks or help.

January may be cold, costly and dark but there are things to look forward to: snowdrops, bulbs and days beginning to lengthen and at least the stress of Christmas is past!

New Year Prayer Pointers

Sundays - Give thanks for our freedom and pray for people living through war.

Mondays - Give thanks for our food and pray for all who are hungry.

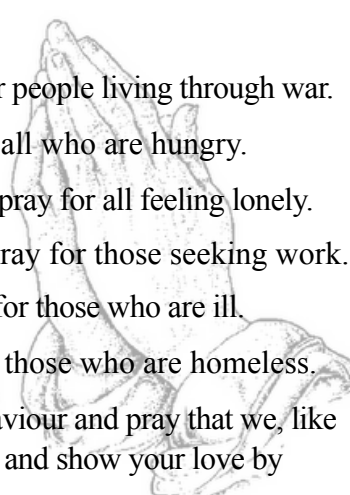
Tuesdays - Give thanks for family and friends and pray for all feeling lonely.

Wednesdays - Give thanks for employment and pray for those seeking work.

Thursdays - Give thanks for good health and pray for those who are ill.

Fridays - Give thanks for our homes and pray for those who are homeless.

Saturdays - Give thanks for Jesus, born to be our Saviour and pray that we, like Him, will be always humble, gentle, and patient, and show your love by being tolerant with one another.



Eastling Church Flower Rota 2026

January

4th / 11th - Suzie

18th & 25th - Bay

1st Feb - Bay

If you would like to join the flower arranging rota, please call Bay on 01795 892036.



CHARING & DISTRICT LOCAL HISTORY SOCIETY



Happy Birthday Jane Austen

To celebrate the 250th birthday of one of the UK's most revered authors, come and join us on this tour through her life, concentrating particularly on places she has seen in Kent, relatives she visited here and why, and what she had to say about the places and people around her.

Speaker: Kerstin Müller

8th January 2026 in the Parish Hall, Station Road

Doors open 7.30pm, talk starts promptly at 8pm

Members free - Guests £3. Membership from £10/year

Otterden with Stalisfield W. I.

Our W.I. Group had a last minute outing to an event organised by the Canterbury Festival - a talk by James Frost on Mumming, Wassailing and the Hooden Horses of Kent, very seasonal with the runup to Christmas. James currently teaches Theatre Design at Canterbury Christ Church University and is also an artist, designer and puppeteer. His knowledge of Kent Folklore, and the increasing popularity of this subject since Covid, is quite astounding and spellbinding. Towards the end of the lecture, around a dozen Hooden Horses joined us which was rather spooky as they are quite strange creatures. Mulled wine and mince pies finished off a very different evening.

The last Meeting of 2025 was a social event, whereby we made paper decoration snowflakes, which was surprisingly successful, followed by a wonderful buffet supplied by Helen Brooks. The evening was finished off by various quizzes and word games (some of us were more successful than others!)

The first month of the year we do not hold an official Meeting, but we will be gathering together for lunch on 15th January 2026 at what was Bybrook Garden Centre, Ashford. Please let Helen Brooks know if you wish to come along.

We meet the first Wednesday of each month at Stalisfield Village Hall at 7.30 p.m.. If you would like to join us please contact our President Helen Brooks on 07477580727 or Secretary Ellie Cameron on 07775649337. We are an informal, friendly Group.

Happy New Year to everyone.



Together in Boots

Join us for a monthly mindful walk through woodland

**Leaving Doddington Church at 2pm
and returning for tea & cake at 2.45pm**

Humans and well-behaved dogs all welcome



On Fridays 23rd January,
27th February, 27th March,

Enquiries to Lissie on 07790 287878
lissie1710@gmail.com

EASTLING VILLAGE HALL

A large hall in a lovely village location.

Ideal for: Clubs, Fitness groups
Parties & Weddings



We have pretty grounds and a lawn with room for a marquee; a large car park, fully equipped kitchen and a meeting room available for separate hire.

To book, email Annie:

jacksonandadams@btopenworld.com

07754 114670

See our availability here: <https://www.eastlingvillagehall.co.uk/calendar>

M & J ELECTRICAL KENT

Domestic & Commercial

Marcus Hammond

Tel: 01795 473959
Mob: 07592 511612

Email: mandjelec@gmail.com



Pest Control Services

Rats, Mice, Wasps and
Bee Swarms removed



Discreet & Prompt Service

Local Tradesman

Contact Andy Pink

01622 884774 / 07761 559 744

The Plough Inn

Family run, independent pub & restaurant, with an extensive menu boasting pub classics and 2 AA rosette specials.

We also offer a Take Away Menu

Wednesday - Friday from 5 - 7pm - preorder required; please call 01795 890256

We will be closed

21st December until 7th January

Keep up to date by following us on Facebook, Instagram or X (twitter)

Stalisfield Road, Faversham, Kent,
ME13 0HY

Tel: 01795 890 256 Email: info@theploughinnstalisfield.co.uk

Faversham Foodbank

Together with Trussell

Items we urgently need

Soup - tins and packets
Tins of cold meat * Cooking sauce
Sponge Puddings * Custard
Tinned Fruit * Long life Milk
Tinned fish * Tinned Carrots
Long life Juice * Biscuits

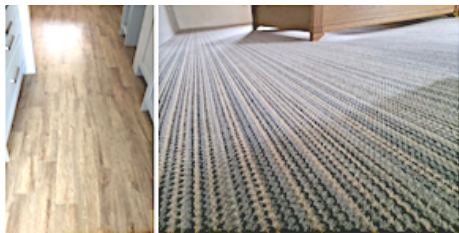
Please put items in the Foodbank collection bins in Faversham Aldi, Sainsbury's and Tesco stores. Thank you.
faversham.foodbank.org.uk/



MASTER FLOORS

CARPET
VINYL
LUXURY VINYL TILES
LAMINATE
ENGINEERED WOOD

Telephone: 01233 22 11 66 Mobile: 07974 227690



Family run business 25 years experience
www.masterfloors.co.uk



Treat your Feet

FOOTCARE

Nail cutting, corns and callus, fungal foot and nails, verrucas, ingrown toenails and care of the diabetic foot

Rebecca Lapslie

MCFHP MAFHP

Foot health professional

Home visits

01795 486849
07734 698792



Complete Homes

Decorating
&
Property
Maintenance

Free Estimates.

Over 25 years' experience.

Contact Brian

Mobile: 07870 946360

Email: completehomes53@gmail.com

www.completehomes53.co.uk



Faversham Feet

Walking you through life in comfort.

*Have you found your feet are getting harder
and harder to reach?*

*Do you have to get into all sorts of unusual
positions to cut your toenails?*

*Are painful feet holding you back from doing
the things you love?*

*Your feet work hard for you every day –
reward them with the care they deserve.*



Address: Faversham Wellbeing,
3 Jubilee Way, Faversham. ME13 8GD
Telephone: 07598 817692
Email: gemma@favershamfeet.co.uk
Website: favershamfeet.co.uk



Garden Services

Year Round Horticultural Care

Local RHS qualified gardener

- ❖ Planting advice. Containers & baskets. Rotovating. Pruning. Hedge trimming.
- ❖ Professional lawn care: Scarifying, turfing, aerating and treatments.
- ❖ Organic and wildlife friendly approach!



Phone or Text Mike on:

07746 220 998

Email: michaelratcliff80@gmail.com



Experience Luxurious Sustainability at The Old Cherry Barn.

Discover eco-conscious elegance in our newly built (2021) luxury retreat, nestled in an area of outstanding natural beauty.

The open-plan living area is perfect for relaxing and dining with loved ones.

Cozy up by the log burner in winter, or open the bifold doors in summer to enjoy alfresco dining on the large private patio and garden.

Book your stay at The Old Cherry Barn for the perfect blend of luxury, comfort, and nature!



theoldcherrybarn.co.uk
Newnham,
Sittingbourne ME9 0NE



Our long love affair with coffee

London's first coffee house opened in 1652, using beans imported from modern-day Yemen. Although many in Cromwell's Britain had doubts about this new drink, others welcomed its reviving effects - and asked for another cup.

Nearly 400 years on, coffee drinking in Britain is a vast industry. We drink 98 million cups of it every day. Even though a takeaway flat white can now cost you more than £5 in London, still coffee has become a daily necessity for millions of us.

And nearly 400 years on, we can better appreciate why this should be so.

Coffee keeps us awake. This is because when caffeine accesses the brain, it actively blocks our adenosine-producing receptors, which run our sleep-promoting system.

Coffee makes us alert. The caffeine drives our brain towards a more excited state which allows us to process information faster.

Coffee can also improve our mood, especially during the winter, when the loss of daylight acts as a depressant.

And although too much coffee can make us jittery and even prone to heart palpitations, there is growing evidence among neuroscientists that coffee can even help to lower our risk of neurodegenerative diseases such as Parkinson's and Alzheimer's.



THE ARTS SOCIETY EGERTON

THE PAINTED HALL AT GREENWICH presented by Nick Salmond. *Nick is a Blue Badge Guide who has worked for the BBC for over 30 years*

WEDNESDAY 14th January at 2.30 pm (doors open from 2.00)
at Egerton Millennium Hall, Elm Close TN27 9DS

Visitors are always very welcome at £8 (just turn up and pay on the door), refunded if you join. For further information please contact Christine Willis, our Membership Secretary via cmwillis75@gmail.com or 01233 756377.

See also our website www.theartsocietyegerton.org.uk
Image provided by lecturer



Volunteering at Belmont

Our volunteers play a vital role in bringing Belmont to life, welcoming our visitors, sharing their knowledge of the Harris family and the history of the house in a fascinating and enjoyable way.

Tour Guides

We are looking for enthusiastic people who enjoy speaking to groups and sharing stories about the house and gardens. You will start by shadowing our experienced guides before gradually leading your own tours.

Room Stewards

Welcome visitors, offer information about the rooms, and help look after our collections. Room stewards also assist with visitor safety.

We provide full training, induction, and ongoing support for all volunteers - plus a range of great benefits. If you are interested and would like more information about volunteering with us, please get in touch.

Belmont House & Gardens, Throwley, Nr Faversham, Kent ME13 0HH

www.belmont-house.org

Smile lines

A churchwarden went to the Police Station wishing to see the burglars who had slipped in and out of the church during evensong. "You'll get your chance in court," said the Desk Sergeant.

"I don't want revenge," said the warden. "I want to know how they got out of the service early without the vicar noticing. I've been trying to do that for years!"

GEORGIA STIRLING LORD

Child, Young Person & Family
Psychotherapist



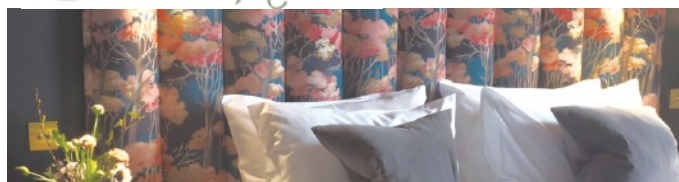
07930 318379

georgia@stirlinglord.com

Based in Wye, Kent



NadineTanner
Interiors



Bespoke Interiors

Upholstery ~ Loose Covers ~ Curtains ~ Blinds ~ Soft Furnishings ~
Headboards ~ Footstools ~ Ottomans ~ Window Seats ~
Poles ~ Tracks ~ Braids ~ Trims

Contact us now for a friendly, no obligation discussion

t. 07966 968503 e.hello@interiors.co.uk w. ntinteriors.co.uk

Find us on Instagram & Facebook



YOUR LOCAL BOILER MAN

Call or email for boiler services and repairs



info@northdownsgas.co.uk

07969 084 665



Keeping real fires safe.

Your Local Village Chimney Sweep

Professional & Reliable
Stoves & Open Fires

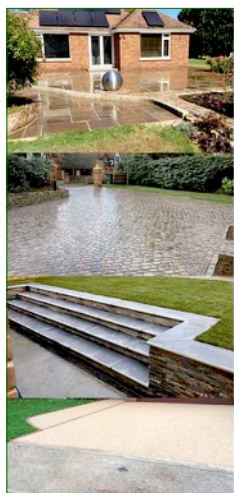
Camera Inspections & Re ropes

Member of the Institute of Chimney Sweeps
Fully Insured, Certificates issued after every sweep

2 Kettle Hill Eastling Kent ME13 0BB

www.yewcottagecs.com yewcottagecs@outlook.com

Call Mat - 07748 912530 01795 890904



Paul TANN Ltd

All aspects of groundwork undertaken
Driveway renovation including Resin
Patio's and Paving
Foundations
Drainage
Fencing
Stonework
No obligation free estimates
Marshall's approved contractor

Call t: 01795 890292 m: 07873 965231

paultann.co.uk [f](https://www.facebook.com/paultannltd) [i](https://www.instagram.com/paultannltd) paultannltd



DAY & EVENING VENUE & ONLINE FITNESS CLASSES

in FAVERSHAM
with
Leigh Miles

0787 343 1952

leigh.fitness@btinternet.com

www.milesdanceandfitness.com

RELIABLE & PROFESSIONAL SERVICE AT REALISTIC PRICES BY CERTIFIED ENGINEERS
WE COME TO YOU!

JKF Computer Services, Est 2000

- PC Repairs, Upgrades & Rebuilds
- Virus Detection and Removal
- PC's Built To Your Specification
- On- Site or Workshop Repairs
- Hardware & Software Troubleshooting
- Computer Installation & Maintenance
- Spyware Detection & Removal
- Collect and Return Service as needed
- Data Recovery and Backup
- Small Business or Home Networks

CALL US ON 01795 531623 or 01227 290131 / Mobile 07880 602823

ROOTS
Kitchens
Bedrooms
Bathrooms

1998 - 2023
25
Years

01227 751130
Showroom Open
Mon-Sat 9am-5pm

We specialise in the **design, supply and installation** of complete **kitchens, bedrooms and bathrooms**. Our **fully managed service** includes all the skilled trades right through to final decorating. Discover more at
www.roots.uk

Vine Farm, Boughton-under-Blean, Faversham, ME13 9AB



...I know he's a great fan of 'Strictly Come Dancing' - but I wish he wouldn't refer to it in every sermon he preaches.

Conversion of St Paul

January is a month of the beginning of great things!

As well as the naming of the Son of God (1st January), we celebrate the conversion of the greatest ever apostle of the Christian faith (25th January).

Many books have been written on Paul, and here is the briefest of introductions.

He was a Jew, born as 'Saul' at Tarsus, and brought up by the rabbi Gamaliel as a Pharisee. A devout, fanatical Jew, Saul persecuted the Christians, and watched with satisfaction the first Christian martyrdom, the stoning of Stephen. Then, on his way to Damascus, Saul had a vision of Christ that stopped him in his tracks. He realised that this Jesus whom he was persecuting was in fact the Messiah for whom he had longed.

Saul changed overnight. He was given a new name, Paul, and became an evangelist for the cause of Christ. He became a leader in the early Church, and his special calling was as an apostle to the Gentiles. He wrote epistles to the young churches that he founded - and thus, inadvertently, wrote a great part of the New Testament.

Life as the greatest apostle was hardly full of perks: Paul was stoned, beaten, mobbed, homeless, hated, imprisoned, and finally martyred. Tradition has it that he was beheaded in Rome during the persecution of Nero in 64AD, and buried where the basilica of St Paul 'outside the walls' now stands. His mighty faith in Christ has kindled similar belief in many hundreds of millions of people down the centuries.

**UNIQUE PERGOLAS
FOR MODERN LIVING**

Adjustable Louver roof
LED Lights/Heater
Fixed or open sides
Creating a garden room
for all seasons

To place an order please email:
sales@edengroveoutdoorliving.com
www.edengroveoutdoorliving.co.uk

T: 07721 721289
T: 01795 890170

EDEN GROVE
OUTDOOR LIVING

**BESPOKE
CARPENTRY**
craftsmanship in wood

Toby Platts Cabinetmaker,
35 years experience
Kitchen Specialist - Handmade or
supplied
Freestanding or Fitted Furniture,
Storage, Home Office,
Media Walls

07479 269006
www.kitchens-carpentry.com

Tutoring

Kent Test Preparation

Primary Key Stage 1 and 2
Booster sessions

Call: Hannah 07989 253555
Email: h.uglow@googlemail.com

Services in our Benefice

4th January Epiphany

Ephesians 3. 1 - 12, Matthew 2. 1 - 12

Eastling 10.30am Holy Communion

Norton 10.30am Morning Worship

11th January Baptism of Christ

Acts 10. 34 - 43, Matthew 3. 13 - 17

Throwley 10.30am Morning Prayer

Newnham 10.30am Holy Communion

18th January Epiphany 2

1 Corinthians 1. 1 - 9, John 1. 29 - 42

Eastling 10.30am Morning Worship

Norton 10.30am Holy Communion

25th January Epiphany 3

1 Corinthians 1. 10 - 18, Matthew 4. 12 - 23

Throwley 10.30am Holy Communion

Newnham 10.30am Morning Worship

1st February Candlemas

Hebrews 2. 14 - 18, Luke 2.22 - 40

Eastling 10.30am Holy Communion

Norton 10.30am Morning Worship

Online Daily Worship Continues

9am Morning Prayer resumes on 5th January 2026
on the Benefice Facebook Page

via <https://kc-hd.org.uk> .

More information is updated weekly on
St Mary's Eastling 'A Church Near You':

<https://www.achurchnearyou.com/church/11982/>

Anna Chaplaincy

Please contact our Anna Chaplain, Caroline Ramshaw,
if you know of someone who is isolated, alone or
unable to attend church.

An Anna Chaplain can offer a listening ear and company.
Communion can be brought to you in your own home.



Contact your local Anna Chaplain on:

ramshawcaroline@gmail.com 07799 538 809

High Downs Parish

Rector Revd Paula Jardine-Rose

07516 411269 paula.jardine.rose@kc-hd.org.uk

Parish Administrator Joyce Warren

01795 521831 joyce.warren@kc-hd.org.uk

Associate Priest Reverend James (Jim) Pye

01795 890726 jim.pye@kc-hd.org.uk

Reader Caroline Ramshaw (07799 538809)

Anna Chaplain Caroline Ramshaw

ramshawcaroline@gmail.com

Reader Pim Baxter (07710 116269)

Church Contacts

Eastling Andrew Baxter, Warden (07749 403727)

Administrator E mail: stmaryeastling@gmail.com

Stalisfield with Otterden

Jenny King, Warden (01795 890366)

Chrissie Webster, Administrator
(07590 351977)

Throwley David Elvin, Warden (07973 837122)

E mail: david.j.elvin@gmail.com

High Downs Parish Safeguarding Officer

Mark Harlow (07979 864000)

E mail: mark.harlow@kc-hd.org.uk

From The Registers

Funerals

Joan Vant

16th December 2025 at Faversham Memoria
Crematorium

Michael Harrison

22nd December 2025 at Stalisfield

CONTACT THE *GOOD NEWS* EDITOR

Hilary Harlow 01795 890338

If you would like to submit articles, or to advertise in
the February 2026 magazine, send your submission by
20th January to: goodnewsmagazine@me.com.

Past and current issues of the Good News may be
viewed on www.goodnews.rf.gd



Updates from Citizens Advice Swale

citizens
advice

At the start of a new year you may be particularly worried about your finances and feel unable to cope, especially if it's been difficult to budget over the festive period. People get into debt for all sorts of reasons. It's important to know you're not alone and help is available.

In 2025, our specialist Money Advice team supported Swale clients with over 3,000 debt issues and helped write off debts of almost £500,000. The advice we provide is non-judgmental and is focused on exploring ways to manage your finances.

When you contact us for advice, we'll assess your circumstances and advise you of the most appropriate course of action based on your situation, capacity and needs.

We can help you to:

- Identify ways in which you may be able to increase your income and reduce your expenditure. We can carry out a benefit check so you know if there are any benefits you're entitled to.
- Help you understand the difference between priority and non-priority debts, and how to manage repayments. You'll then know what your most important debts are and it may ease any anxiety you may have around what creditors can do.
- Explore options to deal with your debts. You may be surprised at the options that could be available to you.
- Provide guidance and support to help you put a debt solution in place.

We're not just here to help with debt. We provide advice on a wide range of issues including benefits, housing, employment, relationships, discrimination, healthcare, education, cost of living and energy.

How can we help you?

Drop-in sessions (no appointment necessary):

Sittingbourne

Mondays 10am-12pm - Swale House

Tuesdays 11.30am-1.30pm - Murston Family Hub

Sheppey

Tuesdays 10am-12pm - Sheppey Gateway (except the second Tuesday of every month, which is held at Sheerness East Working Mens Club)

Faversham

Wednesdays & Fridays 10am-12pm - 43 Stone Street, Faversham

Thursdays 10am-12pm - West Faversham Community Centre

Telephone advice: Call Adviceline on freephone 0808 278 7979 (Monday-Friday 10am-3.30pm)

Email advice: Contact us online at www.citizensadvice.wale.uk/email-general-advice

Specialist debt advice: Request a call back at www.citizensadvice.wale.uk/debt

To stay up to date with our opening times, please visit www.citizensadvice.wale.uk or follow us on Facebook.



When Springtime Comes

by Audrey Keen

I'll walk beside the grazing sheep
And in the wood where I will keep
Onto a path that takes me through
The trees that drip with morning dew.
I'll linger there as perfect smells
Exude from thousands of bluebells;
While little birds sing songs to please
And playful breezes gently tease
The newborn leaf that shakes so much
To feel the first moist dewdrops touch.
I'll rest, perhaps beneath a tree
That's tall and shady over me,
Or pick wild violets as I wait
Beneath the willow by the gate.
And from a hedge of fragrant may
I'll stand to watch white lambs at play
And listen, for I hope to see
The cuckoo as he calls to me.
I'll walk where flowering blackthorn grows,
Wayfaring and the guelder rose
And see perhaps, a thrush at rest
Upon her young ones in their nest.
Oh yes, I'll spend such happy hours
Just walking through the cuckoo flowers
Towards the steep and windy hills
Where primroses and daffodils
Will wave to white clouds moving past
An April sky, that's blue at last.



What, oh what, is that person's name?!

Do your New Year Resolutions include the forlorn hope that you will be better at remembering people's names in 2026?

Many of us – and not only those of the older generation – have difficulty remembering names. It's not just TV personalities and so on, but people we meet in the street. We know exactly who they are, we see them every week in church or the supermarket, we know what job they do and which school their children go to. But as for their name – it's a blank.



Help is at hand, however. Not to solve the problem, but at least to name it. 'Anomic aphasia' is the clinical name for the inability to remember a name, even when we can remember everything else about someone.

There is also the strange truth that the cure for anomic aphasia comes spontaneously, often in the middle of the night, when that elusive identity pops unbidden into our memory. We must be sure, of course, to put the light on and write it down, because for sure it will be gone again with the morning light!

Eastling Parish Council

The next meeting of the Parish Council will be held on Tuesday 13th January at 6.30pm in the Committee Room at Eastling Village Hall.
All are welcome to attend.

Stalisfield Parish Council

The next meeting of the Parish Council will be held on Thursday 15th January at 7.45pm in Stalisfield Village Hall.
All are welcome to attend.

Eastling Neighbourhood Watch



Village Warden 07794 010 394

or 01795 890848

Police 101 Emergency 999

For any cyber attacks or scam calls please report it on: 0330 123 2040

There has again been a lot of activity in the Belmont/Throwley area relating to hare coursing. If seen please ring 999 and mention Operation Galileo it will bring a response.

Take extra care on the roads as it seems the temperature is going to drop and that will bring the dreaded ice.

Be interesting to see when the drink/drug figures come out for the Christmas period let's make sure it does not increase for the new year.

Happy New Year everybody
Alan

Defibrillator Heart Restarter

Anyone can use it
No training necessary



For an unconscious person
NOT breathing normally



Resuscitation Council (UK)



Defibrillators in our Villages

Ready for anyone to use in an emergency, please find the nearest to you:

Eastling sited at 1 Manor Lees, the Street, Eastling. ME13 0BE

Eastling School (School days only, 8am - 4.30pm) sited in the corridor of Main Building. ME13 0BA

Stalisfield sited at Stalisfield Village Hall, ME13 0HY

Throwley sited in the old Telephone Box outside the Old Post Office, ME13 0PJ

A D Pink Electrical

All types of domestic electrical installations undertaken

From full rewires to single sockets, fault finding.

Garden and security lighting

Fully Qualified and Insured

NICEIC Part P Domestic Installer

Tel 07761 559744

Email:
andypink1@aol.com



Plasterer

P. Hadley

**All aspects of plastering covered
20 years experience**

- Ceilings or Walls, Old or New
- Lime Plastering & Heritage Work
- Plaster Boarding
- Over skimming of Artex
- Tiling
- Painting and Decorating
- Property maintenance

No job too Large or Small

Friendly Clean and Reliable Service

For a no obligation free estimate or advice call Paul on

07740 530426

Christina's Mobile Hairdressing

30+ years experience

Mob: 07894 524166

Email: Christinanorcott@gmail.com

A stylist who cares

Also Weddings & special occasions catered for



GREEN MOLE GARDEN MAINTENANCE

- X Lawn mowing
- X Hedge trimming
- X General garden maintenance
- X Power wash for Patios & Decks

call Rick on 07825 410617



January is often a time when we plan our holidays. You might be interested in this small company which offers simple pilgrimage holidays.

Journeying in 2026



It is January, and the adverts for summer holidays are hitting our TV screens again. But have you ever considered a walking holiday with a spiritual side to it, here in the UK? If so, Journeying might be a website well worth visiting (<https://www.journeying.co.uk>).

Travelling through beautiful landscapes to places where for centuries people have felt especially close to God – sacred places, places of pilgrimage - Journeying holiday groups are small, perhaps a maximum of 12 including two leaders who stay with the group throughout.

There is a family feel and a sense of community, with everyone is accepted just as they are. The days are not crowded with activity, allowing space and time for reflection.

The origins of Journeying lie in pilgrimage, and Celtic spirituality is a thread woven through all that they do. Their purpose is to enable guests to venture out, leave the every-day and connect with God in Creation, in each other and in themselves.

Each holiday has a rhythm of gentle prayer; morning and evening and occasionally when the group are out, perhaps by a mountain stream or on a hillside. All who feel the informality and ambience of the holiday will help nurture their own spiritual journey, are warmly welcomed.

The 2026 programme includes holidays with long walks, short walks and some with elements of retreat:

The Island of Anglesey. 24th - 30th April

Llyn Peninsula, North Wales. 16th - 23rd May.

Caldey Island Pilgrimage retreat, West Wales. 4th - 8th June

Grasmere and Lake District. 14th - 19th June

Monasticism in the Wye Valley. 6th - 11th July

Canterbury, England. 17th - 24th August

Tenby and the Pembrokeshire Coastal Path. 12th - 19th September

Late Summer in Oxfordshire. 22nd - 25th September

More info at: www.journeying.co.uk

Chimney Guy



National Association of Chimney Sweeps

Chimney/Flue Sweeping
CCTV Surveys - competitive rates

Call Colin: **07525 204716**
01795 892119

Email: **coljgi30@gmail.com**



NACS Qualified / Fully Insured / Certificates Issued



Bespoke Later Life Support

Website: www.nplh.uk
Email: info@nplh.uk
01795 597983

Exceptional quality companionship and care at home

Inspected and rated

Outstanding ★



**Local area service
Personalised approach
Dementia expertise
Professionally trained**

Build Magazine, Design & Build Awards
"Best Granite and Quartz Worktops Supplier 2024 - Kent"

C.G.L. Granite Sales Ltd
Email: sales@cglgranitesales.com www.cglgranitesales.com

GET STONED FOR LESS

GRANITE & QUARTZ WORKTOPS SUPPLIED CUT & FITTED

FROM £1995.00 + VAT

We also supply & fit QUARTZ, MARBLE & FIRE HEARTHES
Worktops, Islands, Splashbacks, Upstands, BBQ Areas, Tables, Shelving,
Fire Hearths, Bath Surrounds and any stone projects.

Contact Barry Dewey: 07790 476 384 Freephone: 0800 032 6449



Maidstone local & trusted

- Emergency locksmith services
- UPVC window & door repair specialist
- Lock changes and security upgrades
- Emergency burglary repairs
- Misted window replacement
- Doors and windows that won't open or close

Contact us today for a free no obligation quote



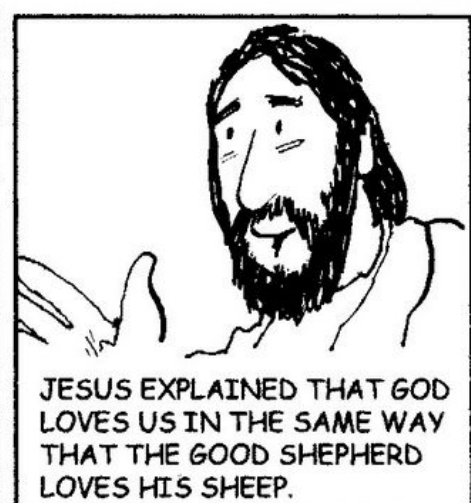
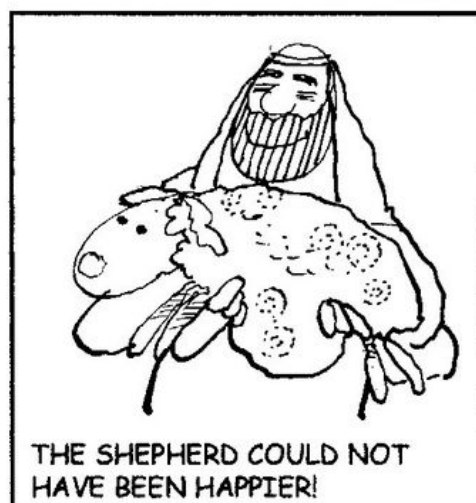
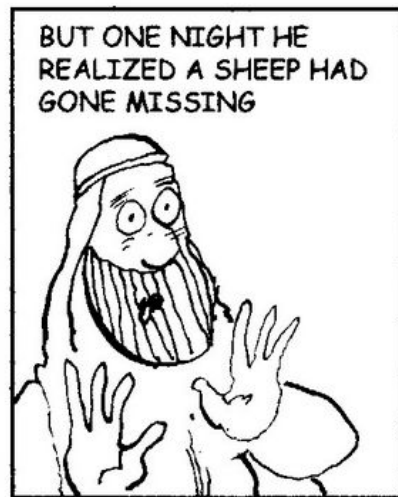
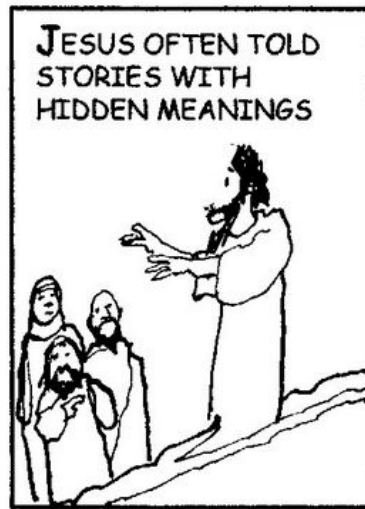
T: 01622 535460

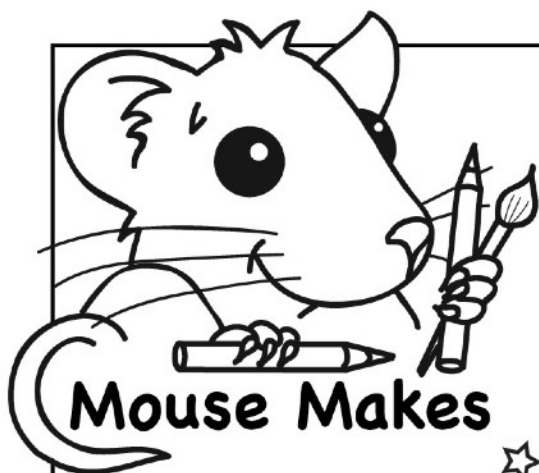


mike.wright@lockfit.co.uk




The tale of the Lost Sheep





WISE MEN FROM THE EAST

The Wise Men came
from a land far away,
they had seen a star
that shone brighter than day.

The star was a sign
of the birth of a king,
so they followed that star
to pay homage to him.

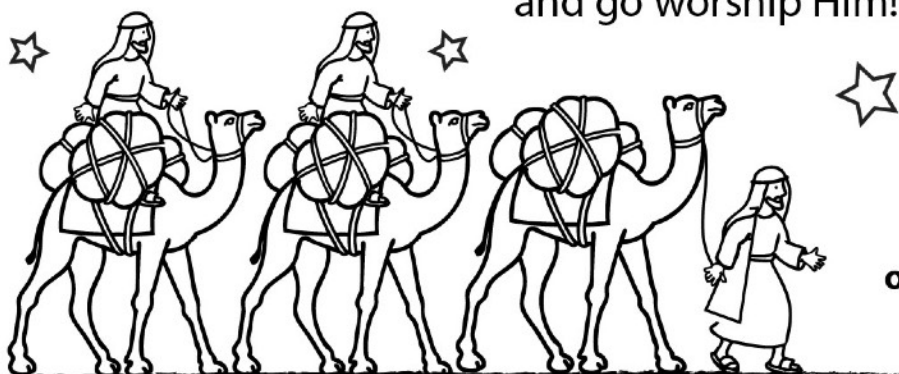
They found him in Bethlehem
as the prophets fortold,
they gave him three gifts:
myrrh, frankincense and gold.

The star led to Jesus
our saviour and king,
let us join with the Wise Men
and go worship Him!



DID YOU KNOW ?

Stars shine different
colours, the colour we
see depends on the
temperature of the star.
The hottest stars shine
blueish-white, then
yellowish-white,
yellow, orange and the
coolest stars shine **red**.



Read the story
of the Wise Men in
Matthew 2:1-12

S B E T H L E H E M J O I Y
T K J E S U S K I N O W W C
A G O E P I P H A N Y O I V
R I U M E S S I A H G R S I
K F R A N K I N C E N S E S
I T N G O L D M Y R R H M I
N S E I J V S I G N B I E T
G O Y A C H R I S T C P N M

Can you find
these words in
the word search?

WISE MEN • MAGI
STAR • SIGN
JOURNEY • BETHLEHEM
VISIT • JESUS • MESSIAH
CHRIST • KING
GIFTS • GOLD • MYRRH
FRANKINCENSE
WORSHIP • JOY
EPIPHANY

