

BURWASH VILLAGES & ETCHINGHAM

**SERVING ETCHINGHAM, BURWASH,
BURWASH WEALD & BURWASH COMMON**



MERRY CHRISTMAS HAPPY NEW YEAR!



**ST BARTHOLOMEW,
BURWASH**



**ST PHILIP,
BURWASH WEALD**



**THE ASSUMPTION
OF BLESSED MARY
AND ST NICHOLAS,
ETCHINGHAM**

DECEMBER 25/JANUARY 2026

£1.50

How you can support your local Hospice



Events

Attend our events throughout the year.



Fundraise for us

Whatever you're planning, let us know what you're up to. We're here to help.



Shop with us

Visit one of our seven shops, across Hastings and Rother, or visit our eBay shop.



Volunteer

Find out where we need help on our website.



Join our Lottery

Join our Lottery, for just £1 a week.



Make a donation

You can simply make a one-off or regular donation.

Leave us a gift in your Will

1 in 3 patient's care is funded by gifts in Wills. If the time is right for you, please consider leaving us a gift in your Will.

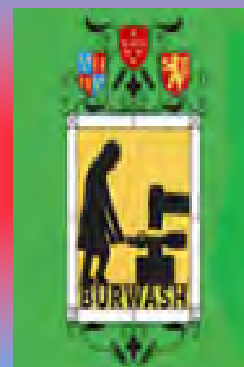


Find out more by scanning the QR code.



Registered charity number 288462

Burwash Internet Hub



If you would like some free help with your computing then please drop in and see us

Open in the Parish Room in Burwash
Every Monday and Wednesday from 10.00 to 12.00 noon

Sponsored by Burwash Parish Council

Run by volunteers

CONTENTS

CHURCH NEWS

	PAGE
<i>Getting in Touch</i>	3
<i>Who's Who</i>	4
<i>From the Registers - Burwash</i>	4
<i>Mass At Christ The King</i>	4
<i>Rector's Corner</i>	5
<i>Churches Together Heathfield & District</i>	5 & 11
<i>St. Barts Flower Guild - Memory Tree</i>	6
<i>December Service Times</i>	9
<i>January Service Times</i>	10
<i>Church Poster Page</i>	11
<i>Burwash Christmas Tree Festival</i>	28

FEATURES AND REGULARS

<i>What's On in December</i>	13
<i>What's On in January 2026</i>	14
<i>Poster Page</i>	15
<i>Floribunda</i>	16
<i>Wild About Burwash</i>	20
<i>Rufus' Rural Rambles</i>	21
<i>Etchingham Nature Notes</i>	23
<i>Burwash Remembrance</i>	23
<i>Etchingham Parish Council Contacts List</i>	24
<i>Etchingham Parish Council</i>	25
<i>Etchingham Trust for Sports & Recreation</i>	26
<i>Burwash Festive Evening</i>	30
<i>Hamper Raffle</i>	30
<i>Burwash Christmas Bingo</i>	30
<i>Festive Quiz</i>	30

GETTING IN TOUCH

If you know of any activity or event in or around the Burwash Villages or Etchingham, which you feel we should be publicising, please get in touch with a member of the Editorial Group:

Caroline Huband 01580 493554

Richard Harden 01435 882556

The deadline for Burwash Villages and Etchingham November Magazine is Friday, 10th October.

DO send articles in on time to:

**burwashetchinghammag@gmail.com and
Carolinehuband@outlook.com**

All contributions may be edited slightly for clarity and accuracy. N.B. : 'Articles are a reflection of the opinions of the author and not necessarily those of the Editorial Committee'.

<i>Report on Soup Lunch</i>	30
<i>Christmas Day Lunch</i>	30
<i>Game</i>	31
<i>Seagulls Over Burwash</i>	32
<i>Burwash F.C.</i>	34
<i>Burwash Parish Matters</i>	41
<i>Burwash & District Flower Club</i>	46
<i>Burwash Common After Eight Club</i>	46
<i>Poetry Corner</i>	47
<i>BCW Residents' Association Open Meeting</i>	49
<i>'No Snacks January'</i>	52
<i>Mayfield & Five Ashes U3A</i>	55
<i>The Arts Society Wealden Heathfield</i>	55

VILLAGE LIFE

<i>Barn Owls Pre-School</i>	18
<i>Etchingham 'Tuesday' Club</i>	18
<i>Getting Info Into Local Papers</i>	22
<i>Walks for Strollers</i>	27
<i>Burwash Walking Football</i>	36
<i>Wadhurst Bowls Club</i>	39
<i>Wadhurst & District U3A</i>	39
<i>Burwash Playing Fields Association</i>	40
<i>Burwash Community Farmers' Market</i>	40
<i>Burwash Not So Young Group</i>	43
<i>Fairfield Surgery PPG</i>	48
<i>Burwash Common Petanque Club</i>	52
<i>Bereavement Friendship Group</i>	53
<i>Burwash Common Toddler Group</i>	53
<i>Neighbourhood Watch</i>	59
<i>Community Contacts</i>	60

DISTRIBUTION & SUBSCRIPTION

Please take out an annual subscription and get your copy delivered every month!

Contacts:

Richard Harden (Burwash) Tel.: 01435 882556.

Susan Mumford (Etchingham) Tel.: 01580 819415.

If you wish to advertise, please contact Richard Harden on 01435 882556 or email rh@richardharden.co.uk

Please supply camera ready artwork, at the size you have ordered, as it saves considerable time. Do send posters in ¼ and ½ page sizes, if possible, rather than A4 full pages because space is precious and we wish to include as many societies/clubs and local events as we can.

Published jointly by Burwash, Burwash Weald and Etchingham Parochial Church Councils.

WHO'S WHO

Rector	Revd. Thomas Pelham	07856 256174	revthomaspelham@gmail.com
Associate Minister	Revd. Jim Smith		jimsmithghana@yahoo.co.uk
Churchwarden (Burwash)	Vacant		
Assistant Churchwardens (Burwash Churchyard)	B & J Macfarland	07792 929 523	
Assistant Churchwarden (Burwash Church Building)	Richard Harden	01435 882556	rh@richardharden.co.uk
Assistant (Admin. & Rotas)	Vicky Patterson	01435 884135	thymeplace@gmail.com
Churchwardens (Etchingham)	Caroline Moore	01580 819272	
	Mary Barnes	01580 819142	
Churchwardens (Bur. Common)	Keith Lloyd		keithalloyd@yahoo.co.uk
	Dr Jane Woodgate		dr.jane.woodgate@btinternet.com
Treasurer (B)	Chris Woodburn	01435 883196	woodburnjes@btinternet.com
Sacristan (B)	Linda Young	01435 882748	
Tower Captain (Bell Ringers) (B)	Nigel Jarvis	01580 819462	Njarvis2@aol.com
Planned Giving Secretary (B)	Sally Gomer	01435 882793	sally.gomer@btinternet.com
Church Flower Guild (B)	Diana Workman	01435 882528	
Friends of St Bartholomew's	Chris Woodburn	01435 883196	woodburnjes@btinternet.com
Burwash & Etchingham	Richard Harden	01435 882556	burwashetchinghammag@gmail.com
Magazine Editorial Group	Caroline Huband	01580 493554	Carolinehuband@outlook.com
Burwash Villages & Etchingham	Richard Harden	01435 882556	rh@richardharden.co.uk
Advertising Manager			
CTHD Representative	Susan Mumford	01580 819415	susanmumford762@gmail.com
Hon. Dir. of Music & Organist	Brian Everall	07841 000117	holbans@yahoo.co.uk

HOME VISITS BY THE RECTOR

If you need a home visit or just a chat,
please phone Rev Tom on 07856 256174.
Please avoid Fridays except in emergencies.

FROM THE REGISTERS – BURWASH

Funeral

15th October	Jeanette Lee
13th November	Caroline Berger

Interment of Ashes

3rd November	Eileen Jarvis
--------------	---------------

MASS AT CHRIST THE KING

Roman Catholic Church, Burwash

Mass	9 a.m. Sunday
Mass	10 a.m. Tuesday
Mass	10 a.m. Friday

Please contact Father Brian Lowden, St Catherine's Flat,
Holy Cross Priory, Lewes Road, Cross In Hand, TN21 0ST, or
telephone 01435 862191.

RECTOR'S CORNER

Dear Friends,

I once had a walk-on part in our school Christmas nativity as an innkeeper - that traditional line, "*No room at the inn*," sending poor Mary and Joseph away to a cold and lonely stable. I can't have done it too well, because in subsequent years I was demoted to the rear end of the donkey, where I famously managed to set myself alight on a candle! Perhaps it's best if I stay out of the nativity this year...

But did you know there's actually no stable in the nativity story? And no inn? No long pony ride from Nazareth, and no lonely Mary shivering in the dark! Shocking, I know. Much of what we take for granted in the nativity scene are later embellishments — rich layers of tradition added over the centuries.

Now, don't worry, I'm not going to be heckling during the Christmas Day service! The story with all its familiar details - the donkey, the innkeeper, the stable - is part of the joy and beauty of the season. But it's interesting, isn't it, that the things we find most memorable are often the small, human details that make the story feel gentler and more homely. Perhaps they help to soften what is, in truth, a story of immense strangeness and power.

Because beneath all the tinsel and tradition, the nativity tells of something utterly extraordinary: the virgin birth; the appearance of angels; prophecy fulfilled in a moment of time; God bursting into His own creation. It's as strange as oil mixing with water : the Creator and the created, united to save a sinful world.

We often think of Christmas as a cosy festival - and it should be! It's right to celebrate with warmth and light, family and feast. But it's also a deeply unsettling story, one that defies every expectation. It tells us that God is not distant or aloof but has stepped down into the mess and muddle of human life. And if that is true - if the baby in the manger really is the Word made flesh - then it isn't something we can pack away with the decorations and the snow globe, ready to be brought out again next December.

If the Christmas story is true, it demands something of us. It calls us to wonder, to worship and to change. God didn't come into the World simply to make us feel warm inside — He came to make us new.

So, amid the carols and mince pies, the candles and Christingles, may we also pause in awe at the strangeness and splendour of it all. For the child lying in the manger is also the King of Heaven - the light who shines in the darkness, and the darkness has not overcome it.

You'll be very welcome at our Christmas Eve and Christmas Day services — the full list and times are **shown on PAGE NINE**.

A Christmas notice: from January, service times across the Benefice will be changing. Most main Sunday services will begin at 10.30 a.m., to allow the Benefice to be managed by one minister. Please see the new schedule for full details.

A very happy and blessed Christmas to you all!

REVD TOM

Rector of Burwash, Burwash Weald and Etchingham

*** SHINE AT CHRISTMAS TIME ***

**Along with Christians all over the
UK and Ireland,
Christians Together in Heathfield & District
will hold a short outdoor service for
Advent and Christmas
in Heathfield High Street, outside Sue's Shoes**

On Friday, 12th December at 2.45 p.m.

Please do come and join us.



St. Bartholomew's Church

Flower Guild

OUR MEMORY TREE



This year our tree will be in our Church from the beginning of December.

It is there to remember our loved ones, and to be a prayer tree for the very sick, to bring strength in prayer to all who suffer and to all who care for them. We also pray for the wonderful people that are working so hard to save our world, for the future of our young. We thank them with our prayers.

Please use the tree tags by the tree – they are for everyone.

The power of prayer is very strong and brings all our loved ones nearer to us at Christmas.

Take care Stay safe

With my very best wishes,

Diana Workman.

Bargain Carpets & Floors

**Carpet and Vinyl Flooring supplied and fitted.
Same choice as any shop but at up to half the price.**



**We can move your
furniture for you
and take away your old carpet.**

**For free home sample viewing and estimates please call
Stuart or Lisa on 01424 855882 / 07734 659834**

Email: bargainfloors@hotmail.co.uk

www.bargainfloors.co.uk

PROUD MEMBERS OF
Checkatrade.com
Where reputation matters

PLANTERS

Christmas Shop – Plant Centre – Café – Food Hall – Antiques Barn – Furniture

THIS CHRISTMAS AT PLANTERS:

FINE FOOD & DRINK FAIR

SATURDAY 29th NOVEMBER

OUR NEW **CHRISTMAS SHOP** WITH EVERYTHING TO
DECORATE YOUR HOME & GARDEN THIS FESTIVE SEASON



Planters A21 – Hurst Green, East Sussex, TN19 7QS

Open Monday to Saturday from 8:30am to 7pm (Sundays 10am to 4:30pm).

Join our loyalty scheme and earn points as you spend.

www.PlantersA21.com

Instagram: [Planters_Farm_Shop](#) – Facebook: [PlantersA21](#)

WADHURST OPTICIANS & HEARING CENTRE

Your local optical & hearing specialist

Hear more clearly with our audiology and earwax removal service

We can offer:

- Full hearing tests
- Low cost hearing aid rental
- Safe and pain free microsuction technique
- Home visits also available

To book your appointment please call: 01892 782674



IS IT TIME FOR A SIGHT TEST?



Wadhurst Opticians and Hearing Centre

01892 782674

Call or pop in to book a consultation

www.wadhurstopticians.co.uk

Maintain your hobbies and interests



Keep your pets



Keep your garden



Keep your routine

Keep your familiar surroundings



Practical help and companionship



Couples stay at home together



Complex care - whatever your needs we can help

Here at Care and Choice we specialise in the highest quality live-in care, keeping you safe and happy in the comfort of your own home. We offer bespoke, one-to-one care that reflects your individual needs and choices, allowing you to maintain your independence and live life the way you choose.

Live-in care allows you to receive support without the stress and upheaval of leaving your beloved home. Our professional team has a wealth of experience in matching carers by their skills and by their personalities to enrich and complement your lifestyle.

Long Term Care



Respite Care



Home from hospital

Care and Choice

"Care and Choice have been absolutely brilliant, I wish I had found you earlier. I have particularly valued the personal service you offer - I really felt you understood our needs, the way you responded so quickly, your attention to detail, the quality of Carers and the fair and affordable fees"



Live in Care

A perfect alternative to residential care - one to one care at home

01403 339200

info@careandchoice.co.uk

www.careandchoice.co.uk



Nationwide Live-In Care

DECEMBER SERVICES IN THE UNITED BENEFICE

Taken by the Rector unless otherwise marked.

Dec 2025	Burwash	Etchingham	Burwash Weald
Sun 7 th	8.30 Holy Communion BCP 10.00 Family Communion	11.00 Holy Communion 4.00pm Crib and Christingle service	8.00 Matins BCP - Penny Button 10.30 Morning Service - Dr Jane Woodgate
Thurs 11 th	10.00 Holy Communion	-	-
Sun 14 th	10.00 UB Service of Parish Communion	10.00 UB Service of Parish Communion at Burwash 4.30pm Compline	10.00 UB Service of Parish Communion at Burwash 4.00pm Evening Prayer - Penny Button
Thurs 18 th	10.00 Holy Communion	-	-
Sun 21 st	10.00 Service of Matins 4.00pm Nine Lesson and Carols	11.00 Family Communion	9.30 Holy Communion BCP 6.30pm Carols by Candlelight
Christmas Eve 24 th	11.30pm Midnight Mass	8pm Christmas Eve Eucharist	3pm Crib Service - Anne Everall 11.30pm Midnight Mass - Rev Jim Smith
Christmas Day 25 th	10.00 Burwash Nativity	9.00 Christmas Day Holy Communion	10.30 Family Communion - Rev Jim Smith
Sun 28 th	10.30 UB Service at St. Philip's	11.00 Holy Communion - Canon Patrick Sales	10.30 UB Service of Family Communion - Rev Jim Smith

JANUARY SERVICES IN THE UNITED BENEFICE

Taken by the Rector unless otherwise marked.

Jan 2026	Burwash	Etchingham	Burwash Weald
Sun 4 th	10.30 Parish Communion 4.30 Evensong	9.30 Family Communion	8.00 Matins BCP - Penny Button 10.30 New Year Dedication - Dr Jane Woodgate
Thurs 8 th	10.00 Holy Communion	-	-
Sun 11 th	9.30 Said Morning Prayer	10.30 UB service Holy Communion at St. Philip's 4.00 Compline	10.30 UB service Holy Communion
Thurs 15 th	10.00 Holy Communion	-	-
Sun 18 th	9.30 Said Holy Communion BCP 10.30 Choral Matins - Christo Corfield	10.30 Holy Communion - Visiting Priest	10.30 Parish Communion
Thurs 22 nd	10.00 Holy Communion	-	-
Sun 25 th	10.30 UB Service of Family Communion	9.30 Said Matins 10.30 UB service of Family Communion at Burwash	10.30 UB service of Family Communion at Burwash 4.00 Evening Prayer
Thurs 29 th	10.00 Holy Communion	-	-
Sun Feb 1	10.30 Parish Communion 4.00 Evensong BCP	9.30 Family Communion	10.30 Morning Prayer

**CHURCHES TOGETHER
IN HEATHFIELD & DISTRICT
BREAKFAST**

**Venue: Tottingsworth Farm Café
(Halley Road, Broad Oak)**

Saturday, 7th February 2026 at 8.00 a.m.

Choice of Cooked Breakfasts at very good prices
(details will be available in January from your CTH & D Representatives)

Speaker: Mike Yule

**“Through Adversity to the Stars
to Walking the Playing Fields”**

Please book with your CTH & District representatives
by 25th January
or contact

Sue Mumford on 01580 819415
email: susanmumford43@gmail.com

These breakfasts have proved very popular in the past.
We hope many of you will come again and bring your friends!

HEATHFIELD & DISTRICT CHURCHES TOGETHER

Invites you to

**ST GEORGE'S CHURCH
BROAD OAK**

at 3.00 pm

ON

Sunday, 25th January 2026

**UNITED SERVICE
OF
'AFTERNOON PRAISE'**

There will be a collection to help
towards the cost of the
'It's Your Move' books for Year Six Pupils.



**BURWASH
FESTIVE EVENING**

Wednesday 3rd December

4.00 to 8pm

**The parish room of Christ the King
will be full of Christmas cheer!**

Have a go on our famous **Tombola** stall

Christmas Raffle

First prize £100.00

Second prize a Hamper

Selection of other prizes

Gift, Cake and

Christmas Decoration Stalls

***Proceeds to go to St Mungo's charity for
the homeless***

DEE'S DESIGN STUDIO



CLOTHING ALTERATIONS

***WOMEN *MEN *CHILDREN**

***CURTAINS *CUSHIONS**

***PET COATS**

DESIGN CONSULTANCY

TUESDAY TO FRIDAY

10AM - 6PM

SATURDAY 10AM - 3PM

4 RAINBOW PARADE

BURWASH ROAD, BROAD OAK

HEATHFIELD TN21 8SX

PLEASE CALL

07594 436274

MERRIMENTS CAFÉ AND GARDENS



Discover Merriments Café & Gardens!
We invite you to explore Merriments
Café & Gardens, where our stunning and
accessible gardens provide the ideal
setting for a delightful outing. Enjoy
delicious homemade food at our café
while taking in the scenery.

Opening hours:

Monday - Saturday 8:30-4:30

Sunday 12:00 - 5:00

Come and try our new delicious Sunday
roasts!



Bring this ad in for 10% off your entire meal!

Does not apply to Sundays

www.caravantech.co.uk/merriments

merriments@caravantech.co.uk

01580 860666

Hawkhurst Road, Hurst Green, Etchingham TN19 7RA

WHAT'S ON: DECEMBER

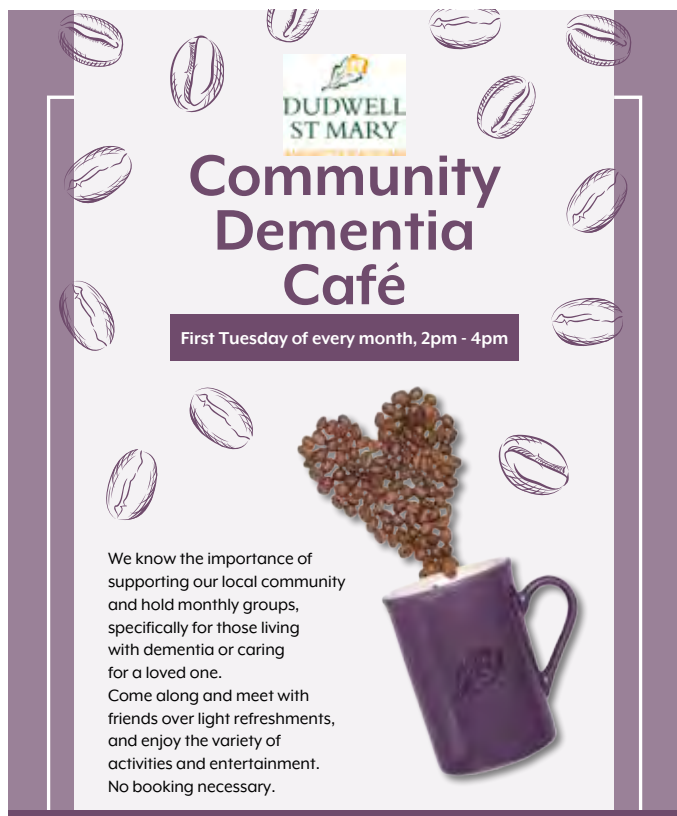
- Saturday, 1st** **ST BARTHOLOMEW'S CHURCH CHRISTMAS TREE FESTIVAL CONTINUES: See page 28.**
CONTINUING UNTIL WEDNESDAY, 3RD.
- Monday, 1st 3Cs at St. Bartholomew's, 10 a.m. - Noon. (Most Mondays, except Bank Holidays.)
- Tuesday, 2nd Burwash Village Playgroup. Tuesday Mornings from 10 a.m. - Noon at Eddie Workman Pavilion. (Every Tuesday.)
- Tuesday, 2nd Community Dementia Cafe at Dudwell St Mary Care Home, Burwash, 2 - 4 p.m. (see page 15).
- Wednesday, 3rd Walks for Strollers meeting at The Bear Car Park, Burwash at 9 a.m.
- Wednesday, 3rd Etchingham Church Baby & Toddler Group, Parker Hall, Etchingham, 10 - 11 a.m. (Every Wednesday.)
- Wednesday, 3rd Movement to Music Classes, Edward Workman Pavilion, 10 a.m. (Every Wednesday - see page 15.)
- Wednesday, 3rd** **BURWASH FESTIVE EVENING, 4-8 p.m. See pages 11, 30 and 50.**
 Also Hamper Raffle on High Street and Tombola & More in Parish Room of Christ The King.
- Thursday, 4th Burwash Common Babies & Toddlers Group 10 a.m. - Noon, at Burwash Common Pavilion. (Every Thursday).
- Saturday, 6th Burwash Community Farmers' Market at Swan Meadow, Burwash 9 a.m. - 11.30 a.m.
- Sunday, 7th Burwash Christmas Bingo at 2 p.m. in Burwash Village Hall.
- Monday, 8th Open Meeting at Burwash Common Pavilion, organised by BCW Residents' Association. 7.15 p.m.
- Tuesday, 9th Arts Society Wealden Heathfield monthly meeting. subject: 'The Art of Snow and Ice: How Artists Transformed the Winter Landscape'. Speaker: Sue Jackson. Held at the Community Centre, Sheepsetting Lane, Heathfield at 2.15 p.m.
- Tuesday, 9th After Eight Club Christmas Dinner at The Middle House, Mayfield.
- Thursday, 9th Etchingham Tuesday Club Christmas Lunch at The Bear, Burwash.
- Friday, 12th CTHD Short Outdoor Service in Heathfield High Street at 2.45 p.m.
- Friday, 12th Etchingham School Christmas Fair at 3.15 p.m.
- Saturday, 13th Farmers' & Makers' Market at King John's Nursery, 9.30 a.m. - 12.30 p.m.
- Saturday, 13th Festive Christmas Workshop in Burwash Village Hall at 1.30 p.m. run by Burwash Flower House.
- Monday, 15th Burwash Not So Young Club Christmas Lunch.
- Tuesday, 16th Bereavement Friendship Group at Old Orchard Cafe, Burwash Common, at 10.30 a.m.
- Wednesday, 17th Etchingham Residents' Coffee & Cake Morning at The Bistro from 11 a.m.
- Thursday, 18th Mayfield & District U3A Christmas Lunch.

MERRY CHRISTMAS & A HAPPY NEW YEAR

WHAT'S ON: JANUARY

Happy New Year

Thursday, 1st	'No Snacks January' begins. (See page 52.)
Saturday, 3rd	Burwash Community Farmers' Market at Swan Meadow, Burwash 9 a.m. - 11.30 a.m.
Monday, 5th	3Cs at St. Bartholomew's, 10 a.m. - Noon. (Most Mondays, except Bank Holidays.)
Tuesday, 6th	Burwash Village Playgroup. Tuesday Mornings from 10 a.m. - Noon at Eddie Workman Pavilion. (Every Tuesday.)
Tuesday, 6th	Community Dementia Cafe at Dudwell St Mary Care Home, Burwash, 2 - 4 p.m. (see page 15).
Wednesday, 7th	Walks for Strollers meeting at The Bear Car Park, Burwash at 9 a.m.
Wednesday, 7th	Etchingham Church Baby & Toddler Group, Parker Hall, Etchingham, 10 - 11 a.m. (Every Wednesday.)
Wednesday, 7th	Movement to Music Classes, Edward Workman Pavilion, 10 a.m. (Still every Wednesday - see page 15.)
Thursday, 8th	Burwash Common Babies & Toddlers Group 10 a.m. - Noon, at Burwash Common Pavilion. (Every Thursday.)
Saturday, 10th	Farmers' & Makers' Market at King John's Nursery, 9.30 a.m. - 12.30 p.m.
Tuesday, 13th	Arts Society Wealden Heathfield Monthly Meeting. Subject: 'The History of the City of London through Stained Glass'. Speaker: Anna Warrilow. Held at the Community Centre, Sheepsetting Lane, Heathfield at 2.15 p.m.
Tuesday, 13th	Etchingham Tuesday Club attending the Quiz at The Bear Burwash.
Thursday, 15th	Burwash Not So Young Club AGM, followed by a Beetle Drive in Burwash Village Hall at 2.15 p.m.
Thursday, 15th	Mayfield & District U3A Meeting at Five Ashes Village Hall at 2.30 p.m. Speaker: Bertie Pearce. Subject: 'Punch & Judy'.
Thursday, 15th	Wadhurst & District U3A, talk by Jane Scotchmer on her travels through Myanmar (Burma). Wadhurst Commemoration Hall at 2.30 p.m.
Sunday, 18th	Leprosy Talk by Dr Ruth Butlin, followed by an Asian lunch. Starts at 12 Noon in St Philip's Church. This is an informal event. All welcome.
Tuesday, 20th	Bereavement Friendship Group at Old Orchard Cafe, Burwash Common, at 10.30 a.m.
Wednesday, 21st	Etchingham Residents' Coffee & Cake Morning at The Bistro from 11 a.m.
Sunday, 25th	CTHD United Service of 'Afternoon Praise' at 3 p.m. at St. George's Church, Broad Oak.



DUDWELL ST MARY
BARNET & WATFORD

Community Dementia Café

First Tuesday of every month, 2pm - 4pm

We know the importance of supporting our local community and hold monthly groups, specifically for those living with dementia or caring for a loved one. Come along and meet with friends over light refreshments, and enjoy the variety of activities and entertainment. No booking necessary.

Dudwell St Mary Care Home
Etchingham Road, Burwash, TN19 7BE
Tel: 01435 883688 • www.barchester.com



Residential Care • Nursing Care • Dementia Care • Respite Breaks

Movement to Music

(Standing, sit if you wish)



Fun, friendly classes
also suitable for older adults & those
with reduced mobility

Burwash, Pavilion, Ham Lane
Wednesdays at 10am

Classes also held in Crowborough, Uckfield and Langton Green

Keep moving, keep smiling!

07900 423676 dianne@seated-exercise.co.uk
facebook.com/SeatedExercise

Please contact me for more information or to book a place





Archway Builders
Building Joinery & Roofing Contractors

Valley View, High Street, Burwash, East Sussex, TN19 7HH.
Tel: 01435 884332 Mob: 07973 378 345






- Full design and planning
- New build and loft conversion
- Renovations
- Extensions, conversions and alterations
- All aspects of roofing
- Carpentry and joinery
- Heating and plumbing (Corgi Registered)
- Kitchen and bathroom fitting
- Painting and decorating
- Wall and floor tiling
- Landscaping and fencing
- Driveways and Patios
- Electrical NIC EIC registered
- Plastering and Rendering

We are a family run business established in 2005 and pride ourselves on our reliability, reputation and highly skilled workforce.

Please contact us for a free no obligation quotation
www.archwaybuilders.co.uk • info@archwaybuilders.co.uk

Proud members of
Checkatrade.com
Where reputation matters

FLORIBUNDA - 'DING DONG'

'Ding dong merrily on high' are the only words I remember from a carol I once sang in St Andrew's Church. This lovely building was next to my primary school, and in its churchyard lay the tomb of William Cobbett, a great reformer. At harvest festival the Church would be garlanded with hops, from the hopfields which closely intertwined with the town. My friend Vicky and I would walk along footpaths and find shortcuts home through the countryside. We lived within two miles of the school so there was no chance of getting on a bus. My parents wouldn't drive us anywhere so it was Shank's pony or nothing. We might have moaned and been late for school but we had good exercise every day.

There were very few overweight people then. Our school food was so horrible we could not eat it so that may have contributed, but we spent far more time outside - roller skating, walking, exploring the source of the Breakneck stream, being thrown into nettle bushes by nasty boys, but surviving to run home in time for tea. We could disappear for hours without anyone noticing. I would see bluebells in the woods in spring and surround myself in nature without a second thought.

When I went back for my mother's memorial service this year so much had changed. The hopfields are covered in new estates. The pubs associated with the hop trade have dwindled and the Hop Exchange is long gone. The town is comfortable and moneyed, with a station connected to Winchester, Guildford and Waterloo. In the old days wives would pick up their stockbroker husbands from the station and bring them home for supper. During the week the wives would volunteer in charity shops and hospitals, and go a little mad from time to time. I was so lucky my mum was a teacher as she was doing a more stimulating job and, what's more, got a decent salary and a pension.

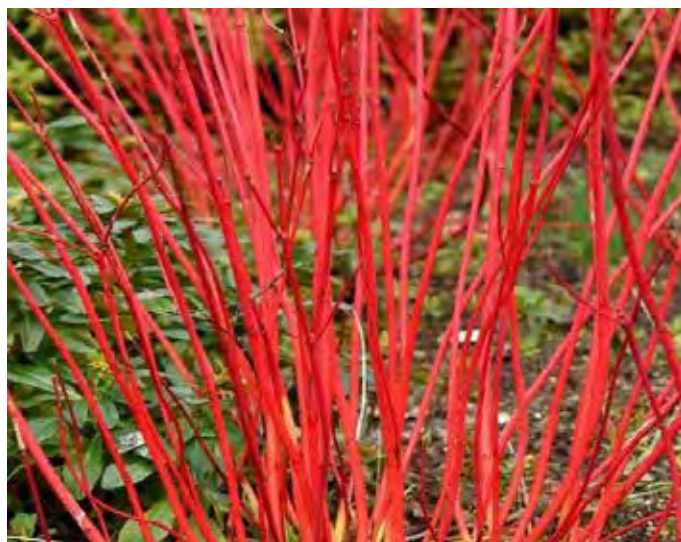
That's one of the reasons I got a job with a good pension too, but it's lovely now to spend my days looking out at the beauty of the countryside here, and go out from time to time weeding like a whirling Dervish from the many doors leading from our house. I am never bored, because there is always something to do and it brings instant improvement.

I admit I am fighting a losing battle against nettles, brambles and thistles but I do give them a run for their money. I would far rather be busy than dwelling on the world outside especially now when the world is full of tall, fat men squashing small, thin ones, and dictators poisoning people who dare to stand up to them. On the subject of poison, I have some plants in my garden that are highly poisonous so my advice would be - *use gloves when you prune and do not eat anything unless you know it is parsley, rosemary or fennel.*

Stick to Christmas pudding, fruity mince pies, and stollen - and enjoy a week off from weeding, threshing, and scything, you deserve a break!

FLORIBUNDA

A dogwood called cornus alba sibirica



R G Dale

Painting & Decorating

Interior/Exterior
Free Estimates
Professional,
Reliable Service
Established 1993

Tel.: 01580 881974
Mobile: 07970 484 073
Email: rgdale@hotmail.co.uk

George Hill Cottage, George Hill
Robertsbridge, East Sussex, TN32 5AX.

SEASONED LOGS FOR OPEN FIRES OR LOG BURNERS

KEENLY PRICED ACCORDING
TO VARIETY, SIZE AND QUANTITY

**HAY, HAYLAGE
AND SILAGE
(ROUND BALES)**

RICHARD BARNES (FARMS) LTD.

CONTACT RICHARD ON:

07768 771933 OR 01580 819000

Email: richard@barnesfarms.co.uk

WADHURST COAL

Approved Coal Merchants

Regular and prompt delivery
at a competitive price

- All Solid Fuels
- Kiln dried LOGS

WADHURST 01892 783657



Ed Arnett

Builder / Decorator / Handyman

- Painting, Decorating & General Repairs
- Carpentry; shelves, doors, units etc.,
- Patio & Gutter Cleaning
- Flat Pack Furniture Assembly
- Curtains & Blinds Installation
- Installation of Light Fixtures & Fittings
- Tip Runs & More... just ask!

Mobile: 07836 514261
Email: edarnett@aol.com

Michael Parris - Water Engineer

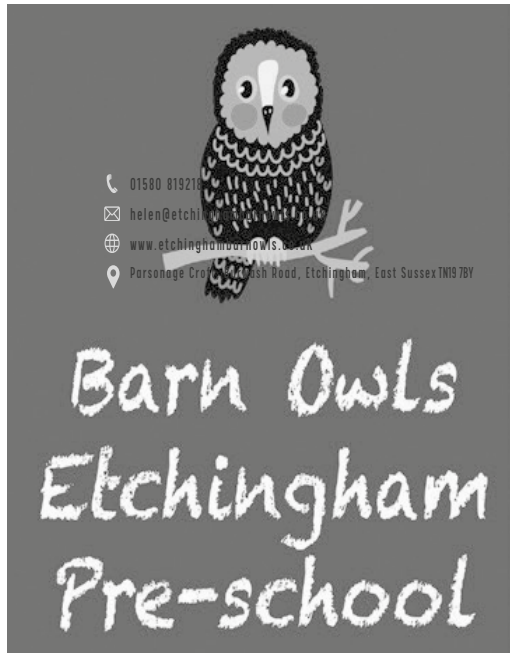
Chain trenching, impact moling,
back feed pipe and cable laying

- Water leaks traced and repaired
- Replacement water supplies laid
- Trough and stand pipe installations
- Water meters, stopcocks and check valves

WRAS Certified
Fully Insured
Est. 1991



07780 768 931
mtap50@gmail.com



BARN OWLS - ETCHINGHAM PRE-SCHOOL

Now we have had half term and are on the way to Christmas already!

Before we broke up we went on a lovely walk in the fields behind the school and gathered many exciting treasures - different coloured leaves, twigs and stones. When we asked the children what their favourite part of the walk was, however, they almost all said seeing the trains!

Then we explored Divali as a topic and the children made Diva lights from clay. The clay was also used to make hedgehogs, using twigs as spines.

We are still harvesting beetroot and using them at snack time. We have been boiling them and cutting them into cubes. Since coming back we have focused on Halloween and Bonfire night as many of the children had been out over half term.

We have also welcomed two new children to the setting: Edward and Ewan.

To contact Barn Owls, please email:
helen@etchinghambarnowls.co.uk

NICKY MENZIES

Contact Helen: 01580 819218 Ext. 5

ETCHINGHAM TUESDAY CLUB, OCTOBER 2025

On the 24th October some of us went to Craft Time in Battle again. Luckily it wasn't raining as it had been last year.

When we got there we picked out what we wanted to paint from the many items to choose from. We then collected the paints we wanted to use.

Over the evening the room was soon full as we decorated our pieces of pottery. Tea and coffee could be bought throughout the evening. The owner helped anyone who needed help. It was definitely a very enjoyable evening for us all.

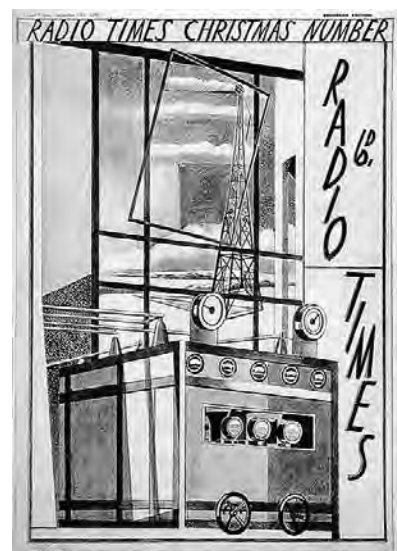
Time flew by and at 10 p.m. we left our pieces on the table to be glazed and fired, ready for us to have them collected on another day. Before we left we paid the owner for what we had chosen. A big thank-you to Corrina for taking us there in her car, while Sally drove on her own. Thanks also to Hilary for finding the venue for us.

Several days later Corrina kindly went to collect our items. I hope everyone was happy with the piece they decorated. I was very happy and the toadstool I painted is now sitting in our sitting room next to the little watering can I painted last year. They are keeping each other company.

On the 9th December, we will be having our Christmas Meal at the Rose & Crown in Burwash. On the 13th January we will be going to The Quiz at The Bear, again in Burwash.

LINDA NEVE, GROUP LEADER

Christmas Radio Times Cover 1930





DOES YOUR HOME NEED A NEW LOOK?

Carl & Fiona Christian

...are a husband and wife team who specialise in a professional, personal and efficient service. Whether you just want a shelf putting up, a new kitchen or your whole home re-decorated.

Give us a call anytime to discuss your requirements

PAINTING & DECORATING

KITCHEN FITTING

REPAIRS & MAINTENANCE

FREE ESTIMATES

Tel: 01435 883212 or 07979 590848

www.carlandfionachristian.com

Complete Homes

Let us take care of your home

**Period and Contemporary Property Maintenance
Interior and Exterior decoration**

M: 07870 946360

T: 01580 715616 | 01227 751501

Fitted wardrobes, cupboards and
bespoke furniture made locally.



| seagull
carpentry

**Call 07840 094601 or visit
www.seagullcarpentry.co.uk**

Winter
Farmers & makers markets
at King John's nursery

November 8th
December 13th
9.30 - 12.30

King John's Nursery,
Sheepstreet lane,
Etchingam
East Sussex,
TN19 7AZ

Wild about Burwash

Wild about Burwash joined forces on 1st November with the recently formed Wild about Etchingham and Hurst Green, to present an event for young families as part of the High Weald's Wild about Dark Skies Festival. The Night Shift, which took place at Etchingham Village Hall, drew a crowd of 85 people to listen to the storytelling of children's author Alice Hemming with her new book "A Walk in the Dark". Simon Thorp, Dark Sky specialist and lighting designer, gave a presentation on the effects of light pollution and useful ways to reduce this. It was a fun evening for the end of half term with crafts, colouring, giant puzzles and lots of interesting things to learn about nocturnal animals. Our thanks to the volunteers who helped make the evening a success.



"Fish surveys? You're having a laugh! There's nothing in there!" was a common response when we said what we were doing. However, whilst, as you look down from a bridge, there is nothing to be seen, under the surface, amongst the rocks and in the nooks and crannies, the river is pulsating with life. The upstream fish survey site was near Burwash Common and revealed a fish community dominated by brown trout and bullhead (otherwise known as miller's thumb) with brook lamprey and stone loach also occurring. The mid-section, downstream of Batemans, had a similar population but with large numbers of minnow and occasional chub.

By the time the river meandered through the flood plain at Etchingham, an abundant and diverse community occurred, with ten species being recorded, including pike, tench, gudgeon and eels being caught, in addition to the species recorded further upstream. But it is not only the number of species that is impressive, the abundance of fish was remarkable. The total number of fish caught during the surveys were 117, 273 and 474 at the upper, mid and lower sites, respectively. That means at Etchingham there was nearly five fish per metre of river!

The recording of eels in the Dudwell is important on a local and international scale. European eels are considered critically endangered and their populations have crashed by 90 % since the 1980s. Both brown trout and brook lamprey are UK Priority Species and, along with bullhead, are Habitat Regulations Annex II species. In addition to the conservation designations of the fish, their value to other species as food is integral to the wildlife of the area. The abundant minnow populations provide a primary source of prey for the kingfishers of the Dudwell valley and cormorants, heron and the elusive otter feed on larger species.



The fish population can be considered the bellwether for the health of a river. Fish rely on good water quality and an abundant and diverse invertebrate community to provide food. With this in mind, the findings of the WAB fish surveys are very encouraging. We have a healthy and thriving fish population and, hence, our river appears to be in good shape. The challenge is to maintain that state and, where possible, to enhance it. Rivers are the veins of our landscape and wildlife and, when the veins fail, the landscape and wildlife suffers.

If you'd like any more information about anything WAB, please email us on wildaboutburwash@gmail.com

DR SIMON FORSTER, JULIAN KENNY & ANTONIA STAPYLTON-SMITH

RUFUS' RURAL RAMBLES

We are now in Autumn and the clocks have been altered. The evenings are getting darker earlier but the mornings are slightly lighter. Everywhere there are falling leaves from the trees and they leave a carpet on the footpaths. Walking by the churchyard there are hundreds of acorns on the footpath, so there should be plenty for the squirrels to eat over the next few months. The village pond has still not been looked after by Gray Nicholls, nor the ditch leading towards the station. It looks like an eyesore. The tree trunk is still lying near to the kissing gate. It fell on the 15th January 2025 as we spotted it on our morning walk.

In the last few weeks the trees in the Queen's Gardens have looked amazing with their different coloured leaves. One morning Mum spotted some mushrooms growing on the grass, but decided not to pick them. Under one of the trees is a new bench in memory of Greta Crane who, in her lifetime, helped with different groups in the village and, as a child, lived in the De Etchingham Arms with her parents, Mr and Mrs Russell.

The Queen's Garden was founded in 1953 and, as a child, Mum said there was only one see-saw and two swings. The swings were donated in memory of Mr Aldridge, when his wife owned the shop over the road.

I have had some lovely walks with David and Matthew over the fields and I am allowed to be off my lead. Naturally, they take me some water in a container and I have a special dish which folds up when I have had my drink. I still like being on sentry duty on the top of the settee in the sitting room and watch to see doggies coming over the field with their owners. I often bark at them. Recently there have been quite a few rooks in the field, foraging for worms I expect.

At the beginning of November work was done on the railway track and also on the crossing. For us, and our neighbours, it was quite noisy and at night a bright light shone into Mum and Dad's bedroom.

One night Mum was in bed and the work was directly opposite the house and it was very noisy with one of the machines running. She said the bed shook as if an earthquake was happening! On another day it happened to our next door neighbours at number 6 as well. Thankfully, the work has finished now and when we went for our Sunday walk over the railway crossing it looked much better. Walking along the level both bridges over the rivers had new fences around them and the gate on the other side had been properly mended. The trees along the level have grown and several had lovely coloured berries on them. Some of these berries might be eaten by the birds in the next few weeks. Over the road in the field were some sheep and Mum and Dad had to laugh as only one of them had a white head and a black coat!



***Some berries in Etchingham
(photo taken by Floribunda)***

In the back garden we have a japonica bush and in the summer a pair of sparrows had young there. The parents are still living in it as it has leaves on it even now. They also love going to the bird bath, which is hidden slightly in our garden, for a drink or a wash.

I expect it won't be long before we have a frost and cold weather. It won't be long either before Christmas will be with us. Time flies by so quickly. I wonder if I dare sneak some pigs in blankets?

RUFUS

GETTING INFORMATION INTO YOUR LOCAL NEWSPAPER

Get publicity for your special event in the village columns of the local newspaper,

The Bexhill and Battle Observer.

I want to hear about all your special events, fund-raisers, fêtes, coffee mornings, jumble sales, boot fairs and any other special and important celebrations which would be of interest to our readers.

Please do not wait until the event is about to happen, send your information as soon as you have it available. The sooner it arrives, the more publicity I can give your event. Please also remember to send a report of your event for inclusion the following week.

Your information needs to arrive by 10 p.m. on the Monday prior to the Friday publication date. The preferred method is by email to minimise any risk of errors during copying, but you can use any of the methods below to get the details to me by hand, or post them to:

2 Park Farm Close, Etchingam

Telephone: 01580 819532 or 07483 211838

E-mail: colin.boylett@googlemail.com

The Burwash & Burwash Common correspondent is Mr Tom Travers.

Tom can be contacted at:

Thomastravers@btinternet.com

or on 07529829825 or (01435) 882828

COLIN BOYLETT





ALTERED *images*

PICTURE *framing*

Established 1986

email: altered.images@
btinternet.com

■

www.alteredimagespicture
framing.co.uk

■

RETAIL & *trade*

01580 200922



Open Tue-Sat 9am-5.30pm
The Forge, High St, Burwash,
Etchingam, E. Sussex, TN19 7EP

PAUL'S SERVICES

Gutters, Conservatory roofs cleaned

Hedges cut, Sheds, Fencing, Decking, Pergolas, Paths,
Patios jet washed, Garden clearance, Play frames,
Garden furniture

Mowing, Strimming small gardens to fields with a ride
on or tractor and topper

Garden Machinery serviced & repaired

And much much more, too much to list

Any job considered, not just in the garden

So if you need anything done give me a ring for a very
good quote. And a fast and friendly service

Phone me on

Mobile: 07817 401989

ETCHINGHAM NATURE NOTES

As I write this, at the very beginning of November, the colour of the leaves is quite spectacular, those on some of the shrubs in the garden are particularly diverse and beautiful. As in the last year or two, the leaves generally are changing colour rather late, and suddenly. I love all the seasons of the year but, if I had to choose which is my favourite, I have to say I think it would be Autumn.

I have mentioned, in recent editions, the fact that we are seeing three deer in our woods almost every day, and they are still here. As before, they show no sign of being nervous about us (and our dog - Karma) walking through the woods, nor indeed when I have been working there, cutting and picking up fallen branches. They seem to be virtually living full-time with us, and I can only wonder where they find water (we have streams running through our woods in wet winters, but nothing for the rest of the year). On odd days we don't see them, and then I really miss them! I really regard them as being a natural part of our environment.

We have four compost heaps in the corner of our garden, each one some ten feet square, built with fallen tree branches. We fill them with dead leaves, cut grass, prunings and all our food waste. We empty one each year (spreading what is then very much like soil over the flower beds). In four years everything rots down extremely well (we had only three until a few years ago, so they then had only three years to mature - much better now with four!). At the time of writing, one heap has been demolished (the dead wood used to build it having largely rotted) the contents are being spread, and I have collected enough fallen branches (I hope!) to rebuild it.

As ever, please do not hesitate to report anything you feel worthy of mention in my notes, either by telephone (01580) 819326 or e-mail: langsmith_@hotmail.com

FRANK H. SMITH

BURWASH REMEMBRANCE

Sunday, 9th November was bright and sunny when people started gathering in the High Street for the village Remembrance Parade.

Although the Parade from the car park was smaller with Heathfield Silver Band unable to march and playing static at the War Memorial, the footpaths were packed with all ages for the act of remembrance and the laying of wreaths.

Inside St Bartholomew's the pews were not as full as usual and there was less gusto in the hymn singing but the service and especially the reading of the names from the Burwash Roll of Honour were no less poignant.

About 10.45 a.m. on Tuesday, 11th, Armistice Day people started gathering at the War Memorial and there were quite a crowd for the prayers and the silence at 11 a.m. on the 11th day of the 11th month.

The Last Post and Reveille added to the importance of the simple ceremony.

Grateful thanks to the dozens of drivers who stopped and observed the Acts of Remembrance with us on both days, especially on Armistice Day when there was a round of applause from the gathering as they set off on their journeys again.

Poppy Appeal boxes are being collected as this is written, so watch out for the results of the count in the next issue and around the Parish.

Massive thanks as ever to all the businesses who hosted collection boxes, the Scout Group for their wonderful support and everyone who donated and wore their Poppies.

We will remember them.

STEVE MINTRAM
(HON. SEC. RBL BURWASH BRANCH)



ETCHINGHAM PARISH COUNCIL 2025

<https://etchinghamparishcouncil.gov.uk>

Chairman:

Benjamin Sutch 07575 885585 cllr.sutch@etchinghamparishcouncil.gov.uk

Vice-Chairman:

John Barnes 01580 819142 thebarnes@outlook.com

Councillors:

Colin Boylett	01580 819532	cllr.boylett@etchinghamparishcouncil.gov.uk
Mary Barnes	01580 819142	thebarnes@outlook.com
Simon (Sid) Barrow	07989 065702	simonpbarrow@gmail.com
Robert Beeney		cllr.beeney@etchinghamparishcouncil.gov.uk
Adrian Hanstock		cllr.hanstock@etchinghamparishcouncil.gov.uk

Parish Clerk:

Paulette Barton 01580 819048 paulette.etchinghampc@gmail.com

{Office hours: 10.30 – 12.30 Monday, Wednesday and Friday}

Parish Council updates – to receive email information updates from the Council enter your name and email address at the bottom of any page on the Council website. Emails are all sent Bcc and are in addition to information sent on the village e-bulletin.

Website Admin – admin@etchinghamparishcouncil.gov.uk



P A White-hide

Property Maintenance

Philipwhitehide@gmail.com

East Sussex
07901 924231



07866512610

Professional tree surgeon with over 30 years' experience. Fully insured and specialist in large or dangerous trees.

- Tree Surgery
- Hedge Cutting
- Stump Grinding
- Fencing

Areas of Kent and East Sussex covered, based near Robertsbridge.

Email: richardwebbtreesurgeonltd@outlook.com



ETCHINGHAM PARISH COUNCIL

Welcomes its latest Councillor who was co-opted onto the Council at a meeting held last month. If you haven't had a chance to meet him yet the following will give you an idea of how fortunate we are to have him on board.



Adrian Hanstock QPM, FIoD, CD is a leadership coach and organisational consultant, drawing on a career dedicated to safer, stronger communities. He served as a police officer for more than 35 years in Nottinghamshire Police, the Metropolitan Police Service and British Transport Police, becoming Deputy Chief Constable and interim Chief Constable during the Covid-19 pandemic.

His work centred on public protection and neighbourhood policing, leading initiatives that reduced burglary and youth crime, developing fair and effective stop-and-search as the NPCC strategic lead for nine years, and pioneering approaches that dismantled violent gangs and removed weapons from the streets. In 2011 he was appointed Commander for the London 2012 Olympic and Paralympic Games, earning a commendation from the Commissioner for planning and delivery. He subsequently took

senior roles at New Scotland Yard, coordinating counter-terrorism activity, strengthening local policing, and introducing technology that improved service to residents and victims.

Beyond policing, Adrian served as a Director at Network Rail, overseeing network operations in Kent, major infrastructure improvements and strategic resilience planning to keep passengers and communities moving during severe weather events and the challenges of climate change.

A Chartered Company Director, and graduate of the Windsor Leadership Trust and FBI executive programmes, in 2021 he received the Queen's Police Medal, which was presented during a private audience with Her Late Majesty Queen Elizabeth II at Windsor Castle. Adrian continues to contribute to public safety and community wellbeing through governance and charitable trustee roles.

ETCHINGHAM PARISH COUNCIL

ETCHINGHAM TRUST FOR SPORTS AND RECREATION

By the time this article is read the AGM (27th November) will be behind us. It no longer has any role in electing the Trustees as the Parish Council has become the Sole Managing Trustee, but it remains the principal vehicle for an interchange of views about the village halls. Suggestions as to how better to promote them and for equipping them to accommodate fresh uses are always welcome.

We welcome a new Trustee in Adrian Hanstock, QPM. The Parish Council article on the previous page introduces him in some detail so I will not repeat that here, but simply agree how lucky we are to have him step forward and join us.

It is probably worth re-emphasising, given changes in the population of the village, that the main (Ahrens) Hall is shared with the school, but it is available to the village, and indeed the wider community, outside school hours. Currently it seems to be under-used and it has been suggested that we create a film society that might screen films either for children or adults. Before we invest in the necessary equipment, it is essential to ask whether there would be sufficient volunteers forthcoming to run it, and indeed whether the demand would be there. Please contact me or the Administrator/Parish Clerk if you would be interested or want to give us your view.

While current usage generates sufficient income to balance out the running costs of the hall, we are not raising sufficient to cover the cost of administering the halls nor indeed administering the Trust. Nor are we putting much away against future repair bills. This is where fundraising becomes crucial: a major way in which villagers can help (and enjoy a mild gamble) is by joining our "100" Club. Membership costs just £5 per month and the monthly draw establishes which three members have won money prizes. The proceeds go a long way to meeting the current cost of administering the halls.

However, like the job of Parish Clerk, the requirements laid upon the Trust by the Charity Commission have increased and it may be necessary to re-instate a separate post to look after the Trusts for which the Council is the Corporate Trustee. The matter is under discussion because of the resignation of the assistant to the Clerk. Olga has been a tower of strength since taking the job and we would like to thank her for all she has done these last three years and wish her well for the future.

At the AGM we will no doubt place on record our thanks to Paulette Barton, our Administrator/Parish Clerk, for her continued sterling service, not least in liaising closely with Greg Coleman who manages the building for both the school and ourselves as part of his remit. We meet each term with the school as the Joint Management Committee to deal with any issues that arise. Fortunately, they are few and we have a good working relationship. We thank all those concerned, but particularly Greg and the Head Teacher, Cherane Marshall, together with the delegated school governors.

We believe that our halls are amongst the very best available in East Sussex, but clearly, they need to be priced competitively. The Trustees continue to operate a three-tier set of charges, the lowest being for our village residents. We can only afford to do that if the hall is fully used. This is very largely the case during the week, but we would welcome more use being made of them at weekends and in the school holidays, when too often they stand empty. We are very happy to show you what is available if you are interested.

Finally, may I wish all readers a very happy Christmas.

JOHN BARNES
Chairman, ETSR

The Etchingham Council Contacts List is a work in progress so an amended List will be published in our February edition.

WALKS FOR STROLLERS

The weather was dry for our November walk. Seven Strollers headed down Ham Lane passing The Rose and Crown. We enjoyed the view across the High Weald as we walked.

On reaching the footpath on the left we headed across the fields and woodland to the River Rother, crossing Wreckery Bridge. We then took the bridle path up to the railway line.

After crossing the tracks, we turned left on to the footpath through Cock's Wood up to Hammerden. Heading towards Stonegate, we continued on the footpath through Church Wood Shaws.

On exiting the wood, we turned right heading back towards Burwash. Passing between two ponds, we continued on the footpath turning right on the driveway to Old Bear Hurst. Here there are some interesting doorways on the footpath (see below).



One of the ponds



View looking back towards Burwash

Crossing back over the railway line on the bridle path we headed towards Burwash across the fields on the footpath, passing Christ the King Catholic Church, before reaching the car park once again. The total distance was 5½ miles.

Our next walk is on Wednesday, 3rd December meeting at the Bear Car Park, Burwash, at 9 a.m.

This is followed by our New Year walk on Wednesday, 7th January, meeting once again at the Bear Car Park at 9 a.m.

Any new Strollers are most welcome to join us. Please ring, if you have any questions.

We would like to wish all our Burwash Strollers a very Merry Christmas and a Happy, Healthy New Year!

**PETER AND KAREN FARLEY
01435 883141**





Christmas Tree Festival
St.Bartholomew's Church
Burwash

Saturday 29th November -
Wednesday 3rd December 2025

St. Bartholomew's Church Charity No 1133028

Saturday
29th November 10.00 - 4.00pm - Refreshments and Raffle
FREE ENTRY

6.30pm - 7.30pm Entertainment- Vaughan Williams
fantasia on Christmas Carols and other Christmas
pieces. **Refreshments.**
(**Donation on the door**)

Sunday
30th November 11.00 - 4.00pm - Refreshments and Raffle
FREE ENTRY (Informal Carols at 4pm)

Monday
1st December 10.00 - 4.00pm **FREE ENTRY**

Tuesday
2nd December 10.00 - 4.00pm **FREE ENTRY**

Wednesday
3rd December 10.00 - 8.00pm **FREE ENTRY**
Festive Evening 5.00 - 7.30pm - Refreshments, Raffle

EGGS^{TO}APPLES

FARM SHOP

SHOP & CAFE OPEN 7 DAYS A WEEK.

LOCAL DELIVERY AVAILABLE. ORDER BY EMAIL OR PHONE.

**Fruit & Vegetables. Cafe. Great Coffee & Cake.
Cheese & Charcuterie. Delicatessen. Fresh & Smoked Fish.
Free Range Meat. Groceries. Fresh Bread Delivered Daily.
Craft Beers & Spirits. English Wines. Flowers & Plants.
Ice Cream. Logs & Kindling. Hampers & Gifts.**

Hard to Find Ingredients & All Your Essentials.

SHOP LOCAL, LEAVE WITH A SMILE.

OPENING TIMES: MON TO WED 8 AM - 5.30 PM.

THURS TO SAT 8 AM - 6 PM. SUNDAY 10 AM - 4 PM.

www.eggstoapples.co.uk / hello@eggstoapples.co.uk / 01580 860566

ETCHINGHAM POST OFFICE

High Street, Etchingam Phone: 01580 819241

National and International Postal Services including Guaranteed Next Day & Parcel Force.

CASH WITHDRAWALS. CASH & CHEQUE DEPOSITS FOR ALL MAJOR BANKS

The largest supplier of foreign currency plus Euros and US dollars on Demand.

Car Tax, Travel Insurance, ISAs and Savings Accounts.

Phone Cards and Mobile Top Ups.

Electric and Gas Key Charging.

All this, plus the area's best value and choice of greetings cards, postal packaging and stationery.

Open: Monday - Friday 9 a.m. - 12.30 p.m. Saturday 9 a.m. - 12.30 p.m.

PARKING

BURWASH FESTIVE EVENING WEDNESDAY, 3RD DECEMBER

We hope you will all make your way to the Burwash Festive Evening from whichever village you reside in. There will be loads going on (see page 50).

By the way, any customer who goes to the **Flower House on Burwash Festive Evening**, and makes a purchase, will be entered into a prize draw to win a £60.00 festive table decoration for collection on 20th December.

Hoping to see you all at the Festive Evening. Good luck too!

THE EDITOR

HAMPER RAFFLE

Just to remind you that Barry and I will be holding the hamper raffle once again in our garden at Violet Cottage on the **Festive Evening, on the 3rd December**.

There will also be three other prizes, including a homemade Christmas cake.

We will be open from 4.30 p.m. until 7.45 p.m., when we will do the draw. We will be serving hot, freshly made soup again, as this proved very popular last year.

All proceeds will go to the Get Together lunch.

FESTIVE QUIZ

The Festive Postal Quiz went out at the beginning of November: 100 questions on different festivals from around the world. They are £2 a copy. Hurry, if you want one, but we have extended the deadline.

You can obtain a copy from me at Violet Cottage or send a stamped addressed envelope to me with your £2 to Violet Cottage, High Street, Burwash, TN19 7EH. There is a cash prize for the highest number of correct answers and proceeds will go to The Get Together Lunch.

My target is to reach £3,000 in time for the lunch this month. With your help I will make it! Thank you.

BURWASH CHRISTMAS BINGO

Don't forget that the Christmas Prize Bingo will be held on **Sunday, 7th December, in the Burwash Village Hall**. The doors will open at 2 p.m. with eyes down at 2.30 p.m. This will be a fun afternoon for the whole family. The proceeds will go to the Get Together lunch.

Any prize donations would be gratefully received: call Mary on 01435 882107. We look forward to seeing you all again.

CHRISTMAS DAY LUNCH

For personal reasons and because of the difficulty of getting volunteers, Barry and I have taken the sad decision not to run the Lunch this year. However, I would like to say a big thank you to everyone who has given up their Christmas Day over the last twenty years to help us put it on.

The Lunch is on nonetheless! The lovely Michelle and her son, Theo, have decided to take it over. They will have a slightly down-scaled version but with the same infusion of a festive lunch, fun and friendship. If you would like to get involved helping or to enjoy the lunch, please contact Michelle on 07949 608252 or email michellegaines@btopenworld.com

I wish Michelle and Theo all the very best of luck.

REPORT ON THE SOUP LUNCH

Thank you to all those who attended the Soup Lunch on the 6th November. It was a great success and £447 was given to Village Hall funds as a result of your support!

MARY TAYLOR BEM

THANK YOU

Thank you to **Mary and Barry Taylor** for all their fund raising events and hard work. **We wish them and their helpers a very Happy Christmas!**

THE EDITOR

GAME

As I wandered along Borders Lane in the moonlight, a large stag appeared out of a gap in the hedge and looked at me as if to say, “Well, which witch are you?” My hair had been styled by the gale the day before, with twig highlights so I could understand his fright. Not as much as mine. Anyway, he was so disgusted by what he saw that he went back through the gap. A tawny owl flew overhead in the moonlight. It really was a Halloween encounter.

Yet, I couldn't help thinking how much I love a good venison steak or a venison casserole with wine and red cabbage(right now I'm attacking the left over sausage rolls from the Farmers' Market and the keyboard will need cleaning once again). Venison was available at the Farmers' Market yesterday, sourced locally as countryside lovers struggle to control numbers. Good tree management and deer do not really go hand in glove, so to speak.

As I wandered about with the dog at dawn, with the Dudwell wrapped in thick fog and cloud a very wet, large cock pheasant greeted me, running off into the hedge with his lady friends. Fortunately, I do not have a gun, as he has dug a lovely hole in the middle of the lawn. Again, the local butchers have ready plucked pheasants at the moment and very delicious they are. The last one I ate, I had to pluck and gut, but the dogs made sure that there was no waste. My grandfather made a point of teaching me how to pluck a pheasant, as well as how to pickle walnuts before I was ten. Pheasant and wild duck were his favourite meats. We normally had hares and rabbits as well, plus a few wood pigeons for good measure hanging in the barn. Yet he hated fox hunting.

Eating game is, in fact, a good way to support the local rural economy. It must be healthier than a 'factory' farmed chicken, bred for the table. It is certainly better tasting food. It is local, it is fresh, it is additive free and it helps in the management of the rural economy. It also pairs well with local seasonal vegetables, parsnips, swedes, red cabbage, baked onions, leeks beetroot and spiced dried beans/peas. It's a good way to be catering for the vegetarians at Christmas at the same time without having a huge turkey leading the feast, and far easier to prepare in advance.

Game is now available from good sources within our villages, so do support these local businesses working within our parishes.

Do not start eating hare in East Sussex, however: they are far too low in numbers. My grandfather was in East Suffolk where hares still breed more successfully. I have watched the local 'wild' duck population soar - literally - as the Mandarin ducks have taken over the pond and ousted the Mallards. The ornamental Mandarins have turned feral, and they are multiplying faster than the rabbits.

Many of the deer 'parks' in this area, were in fact originally enclosed areas for the Norman lords to hunt in, encompassing both woodland and heathland/open pasture. Hunting was the preserve of the upper echelons of society. We, the plebs, would be locked up for poaching and later even shipped to the Colonies for the same offence, so I suggest we make up for some lost centuries and eat some game. It was not only about the 'games' involved in catching it, it was the actual eating of it. The Medieval diet did not include much meat.

Interestingly, in later centuries the *Boxing Day* gifts to workers on the Ashburnham Estate were often meat: “one pound of beef to the Head Gardener, two pounds of beef to the Game Keeper”. The records of Christmas treats on Boxing Day make very interesting reading.

You never know, my German Short-Haired Pointer might just catch some game instead of playing with his toy pheasant! His favourite game is to squeak his plastic red bone at 3 a.m. and beg me to play with him when all I want to do is crawl back to bed. His Christmas present is already decided: a decoy duck, so he knows what we are aiming for!

CAROLINE HUBAND



SEAGULLS OVER BURWASH

Form Book, Festive Footie and England Prospect

Brighton and Hove Albion continue their campaign with six Premier League matches in December, namely home and away games with West Ham, home matches with Aston Villa and Sunderland, as well as the more daunting prospects of facing Liverpool and Arsenal on their own territory. Given the recent form of these teams, on paper, the Seagulls should do well against West Ham, Villa and newly promoted Sunderland, whilst the clashes with top-of-the-table Arsenal and current champions Liverpool could end in a pasting for the lads in blue and white! However, as has been said on many occasions, football is played on grass, not paper, and, furthermore, we are talking about Brighton and Hove Albion here. The Albion's propensity to upturn the form book is unerring and has been discussed *ad nauseam* on social media, in the press and in previous editions of this missive. Indeed, having already beaten Champion's League contenders Manchester City, Chelsea and Newcastle this season, the games against Arsenal and Liverpool should be approached with reserved optimism or even confidence. The difficulty will be beating the 'lesser' teams that 'on paper' are not so good. So, if Brighton can keep the form book in its conventional orientation for the home games and the trip to the east end of London, whilst flipping it over again for the north London and Merseyside forays, the Albion supporters will be a happy bunch by 2026.

The Christmas period is always a busy time of year for football players and supporters alike with games coming thick and fast over Christmas and New Year. This year is no exception with four rounds of Premier League fixtures scheduled for the festive period. With a potential 12 points up for grabs, these few days can have a major effect on the ultimate success, or otherwise, for football teams. Consequently, it is an exciting time for their respective fans and the Boxing Day and New Year's Day games are a dearly held annual ritual that has been observed in our great country for generations. I recall vividly walking down the Old Shoreham Road to the Goldstone Ground on Boxing Day as a 12 year old, adorned in a brand new scarf and hat freshly out of the Christmas wrapping paper, on my way to watch the likes of Peter Ward, Nobby Horton and Teddy Maybank trying to play football on a

pitch resembling a ploughed field. Now, 46 years later (don't do the maths!), thousands of other 12 year olds should be doing the same thing on Boxing Day, heading off to the game with their Mums and Dads, making their own idyllic memories, setting their football allegiances in stone and establishing an obsession that will persist all of their lives. However, I have to warn you that this sacrosanct tradition is under threat. This year, for Premier League clubs, there will be no Boxing Day games (well, with the exception of Manchester United vs Newcastle, but that will be more of a festive pantomime) and, for the Albion, no New Year's Day game! I am sure you are as shocked by this revelation as I was. "How can this be?" I hear you cry, "Has the Grinch taken over the FA?" In a way it has, the Grinch taking the form of the UEFA and the Premier League TV broadcasting deal. The Premier League blamed UEFA, claiming that the expansion of the European competitions by UEFA has increased the fixture congestion for the qualifying clubs. Consequently, fitting all the necessary mid-season league, European and cup fixtures into the festive schedule is challenging and a full round of Boxing Day fixtures was not feasible. However, had it not been for the Premier League's TV broadcasting deal, Boxing Day fixtures would probably have been possible. Under the current agreement, the Premier League has to provide 33 weekends of fixtures and only five midweek rounds. Moving the fixtures to Boxing Day would use up one of the midweek rounds which are more commercially valuable during non-holiday periods. Also, Boxing Day is a Friday and the existing deal stipulates that Friday matches should be broadcast at 8 p.m. not ideal for supporter transport or broadcaster scheduling.

So, this Boxing Day, we will have to stay at home with the Sound Of Music on the TV, Granny Mabel cracking nuts with her false teeth and Uncle Stan snoring on the sofa with a bottle of cooking sherry on his lap while we munch our way through another turkey sandwich. Or you could go to a non-league match at Hastings, Eastbourne or Whitehawk because, rumour has it, there is life beyond the Premier League!

CONTINUED OVERLEAF

SEAGULLS OVER BURWASH CONTINUED

Next year is a World Cup year and the debate continues as to who Thomas Tuchel will select for his England squad for the tournament. There are a few names that are nailed on to the team sheet, the most obvious being Harry Kane. Kane appears to be in the form of his life and, by November, he had scored 17 goals for Bayern Munich. With him in the England team, the chances of finally moving on from 1966 becomes more likely. But what happens if he gets injured? Who will step in? Currently, there are not many English players who can perform the Kane role and, of those that can, only one has shown the kind of form required for international football. That player is Brighton's Danny Welbeck. In a Brighton team of kids and old men, Danny is definitely one of the latter. At 35 years old, Welbeck has scored Premier League goals in 17 different seasons and his six goals in ten league games so far this season is a strike rate only bettered by Erling Haaland (a Norwegian, by the way). Not only is he scoring goals and contributing to build-up play, he also puts a defensive shift in when required, an attribute that is one of Kane's few weaknesses. His main rivals in the England squad for the Kane back-up role are Ollie Watkins, Dominic Calvert-Lewin, Callum Wilson and Dominic Solanke. Welbeck has scored more goals this season than all of them put together. Given his age, Welbeck would not be a long term solution for the England team but Tuchel's only consideration is the 2026 World Cup. If, as he states he does, Tuchel selects the team on current form, Welbeck must be a front-runner for selection. We had a World Cup winner in the Brighton team after the last World Cup following Alexis McAllister being instrumental in Argentina's triumph. It would be wonderful if we had another next summer!

For further information on joining Seagulls Over Burwash and details of forthcoming events, meetings or coach travel, please visit our website at www.seagullsoverburwash.co.uk or email me at simon.forster@seagullsoverburwash.co.uk

Alternatively, please feel free to contact our cherished and esteemed Chairman, Mr Teskey O'Neil, on **01435 884344** or tesbar80@btinternet.com

Being a mature man of fuller figure with a cheerful and jovial countenance, Teskey is an ideal candidate for the role of Father Christmas. Indeed, a few years ago, he was asked if he would help out in the Burwash Christmas grotto and, of course, he was happy to oblige. It was agreed by all that he looked resplendent in the big red coat and bushy white beard and his "ho-ho-ho" was something to behold. It was all going swimmingly until the first child that came into the grotto, took one look at Father Christmas' coat and said "Red? You're not a Liverpool supporter are you?".

Teskey almost choked on his whiskers, was highly offended, and stomped off to get something he deemed more appropriate. Sadly, his blue and white striped Albion bath robe didn't have quite the same effect and his Santa career was a short one.

SIMON FORSTER

NO ROOM AT THE INN - NO EDITORIAL

You have sent in so many articles that there is no space for an Editorial: which is GREAT! Keep up the good work, please. My favourite photo has to be the smiling Petanque Players - all ages, from all villages, with the sun shining.

If things are in a funny order, I apologise, but the colour pages have to be paired.

As you may know, my daughter's father was attacked in Eastbourne and has sadly died from his injuries this week. He was an immigrant, he was black and he was Muslim: but I'm from a family of immigrants - just in centuries gone by - from Brittany and Normandy, from the northern edges of the Austro-Hungarian Empire via Geneva, plus a line from Rollo the Viking, but I'm classed as 'White British' and claim to be English.

He was Berber, Arab and black African all mixed up. Our thinking is becoming 'mixed up'. There may be 'No Room at the Inn' but most immigrants are ultimately looking to build a better life, to build a nest called 'home'. We are nearly all immigrants at some point in our history and we would do well to remember this at Christmas, whatever our colour or religion (or even football team). Love one another and paste over your differences.

THE EDITOR



HEARTBREAK, HEARTBURN AND HEART ATTACKS

First, a big thank you to all the readers who took the time to vote for us in the Jameson Ultimate Matchday Experience competition. Sadly, we did not come first, but we did end up with some consolation prizes including a fresh new kit and a load of free drinks, so there's that at least.

To soften the blow, I was able to surprise the squad with some news I'd been keeping in my back pocket: the long process of applying for a grant from The Football Foundation was finally over. I'm not exaggerating when I say it was a long process, as it's something Ant Coulson kicked off almost a year ago. The grant came just in time, as it was needed for us to buy six portable floodlights, enabling the team to train even when Burwash is dark at 6 p.m. We've since put them to use, and I am pleased to say, they are very effective.

On the pitch we've had an extremely good month. First, we beat Battle Town Development 9-0 in a game that no longer exists. Genuinely, as Battle Town have subsequently folded, our result against them is expunged from history but not memory. Painfully, for Mark McMahon, this is now the second time he has scored in a game only for it to be wiped off the face of the planet. Also, Blake Marchant scored a hat trick and that feels like it's worth mentioning.

This was followed up by a Murrell inspired away win to Sedlescombe Rangers, with Dan scoring two and brother Sam scoring one in a 2-3 win. Sam continued this fine goal-scoring form into the next game, scoring two in a 2-2 away draw to Wittersham.

Next was Eastbourne Athletic First in the Sussex Junior Challenge Cup (it's just a name as they weren't kids). It doesn't really matter what the cup name is though, as soon as you call a match a cup game, Burwash lose. That's how it's been since the club reformed with a majestic 12 consecutive losses in cup matches (and the abandoned game which I still haven't heard about yet).

Eastbourne Athletic had the immediate advantage as they ply their trade on a 3G pitch. It felt ridiculously unfair as unlike most pitches we play on, there was no familiar slope or dog faeces. Eastbourne Athletic took the lead in the first half with a striker somehow managing to head the ball between Luke "Potty mouth" Wappett's legs. But the team were unphased, with Burwash creating the majority of the chances but as usual for cup games, just not quite finishing the chances off. In the second half Will Blaydon managed to capitalise on a goalkeeper mistake to roll in an equaliser. We came under the cosh in the final few minutes but held out to take things to penalties.

Rob Swaine made two saves which were chalked off due to him coming off his line, but he was not to be denied as Burwash won the shootout 4-5 to win our first cup game in what feels like... ever. Our reward is an away trip to Bognor Rovers.

In the league we are 7 points off top but have two games in hand, so it's all to play for!

Behind the scenes spotlight: Rob Swaine

Apart from saving penalties, Rob is the team's groundsman. Helped by his team of (*slave labour*) children, Rob ensures the pitch is ready to go on a Saturday. This includes tasks like drawing the lines on the pitch, setting up the respect barrier and maintaining all kinds of equipment that is needed for this all to work. Without a pitch, we can't play, so we are all always grateful to Rob (*and his children*).

ALEX ROXON (CHAIRMAN)
burwashfc1890@gmail.com



Independent Volkswagen Specialists

Large selection of
Manual and Automatic Golf & Polos

The Square, The High Street, Ticehurst, East Sussex TN5 7BD

01580 200 103

WWW.TICEHURSTMOTORS.CO.UK



07733 050537

All flues catered for - Certificates issued - Experienced family run business
burwashsweep@gmail.com

F.J. JARVIS & SONS

FAMILY BUTCHER EST. 1870

High Street, Burwash

Tel.: 01435 882213

Specialities Include

Burwash Beauties Sausages

Free Range Pork

Marinated Meats

21 Day Mature Beef

Local Lamb

Dry Cure Bacon

Hinxden Farm Dairy Products



ROY'S PLUMBING SERVICES

Full Bathroom Installation Service, Taps, Water Tanks, Cylinders, Radiators, Drains.

Emergency Call Out. All types of plumbing undertaken.

NO JOB TOO SMALL.

Call Roy Varley

01435 866312 • 07920 144067

varleyroy@gmail.com

Local, Friendly, Fully Reliable Professional Service.

**NO CALL OUT CHARGE, Free Estimates,
All Work Fully Guaranteed, NO HIDDEN COSTS.**

BURWASH WALKING FOOTBALL



Battle Knights 1 – 0 Burwash

This was the first time we had played Battle in a league match and on the new 3G pitch at Claverham Community College the omens looked promising as, although it had rained hard all day, it stopped as we stepped on to the pitch and gave us an hour's respite.

It was a familiar story in a game of very few opportunities with Burwash pushing the ball around comfortably and having the greater possession but failing to muster any clear-cut chances. There was no shortage of shots from distance that rattled the side netting or came back off the safety fence behind the goal but nothing to trouble the Battle keeper (and even less on target).

Into the second half and it was much the same. Burwash conceded a couple of free kicks 10 yards out and the warning signs were there with Battle's first attempt but they then allowed the Battle striker to get a shot away on the second and although the Burwash keeper got a hand to it, it ended in the back of the net. That was the only real shot either keeper had to save all game!

With seven minutes left Battle only needed to get everyone behind the ball to see the game out and claim the three points.

As we trudged off the pitch the heavens opened and it poured with rain – perhaps it hadn't been such a good omen after all.....

Our next game was just three days later – barely enough time for our old bodies to recover.

Eastbourne Yellows 0 – 1 Burwash

***Sponsored by
Archway Builders of Burwash***

Burwash didn't let the earlier set back deter them and, after the customary shaky first five minutes, began to take hold of the game and Big Kev up front lashed off a shot that hit the post. Although 0-0 at half time and despite Burwash having the majority of possession, Eastbourne opened the second period with a couple of shots that were well saved, before an exquisite pass out from defence found Peter Manning in acres of space and he was able to coolly slot the ball home to give Burwash the lead.

Eastbourne were forced to push forward for an equaliser leaving gaps for Burwash to exploit and, but for their keeper making a couple of good saves and having a goal disallowed, Burwash could have added to their final scoreline.

**If you are over 50 and would like to get involved,
please Contact Steve Mintram:**

**01435 882444 for more information.
www.burwashwalkingfootballers.co.uk**

**Burwash Walking Footballers -
Over 60's East Sussex League Champions - 2025**

LAURENCE WORTON





LUTHIER ~ MAKER,
REPAIRER AND
MAINTAINER OF
GUITARS

Give me a call or send an email anytime.
Free consultations and quotes.
07850 432316 ~ david@guitarrivers.co.uk




**CLOCK
REPAIRS**

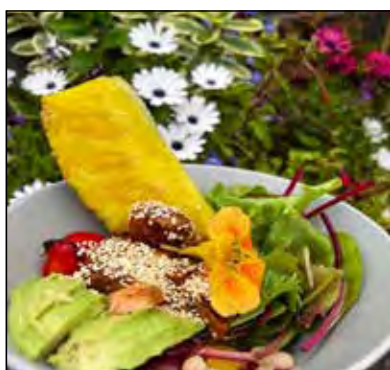
James Corbett- Professional
horologist with 10 years of experience
and training from the British
Horological Society.

If you would like a clock looked at please
contact me: Jamescor6@gmail.com



The Old Orchard Nursery

Café & Plant Sales Area



Mon-Sat 8.30am-3pm

[Last food orders 2.30pm]

Website: theoldorchardnursery.co.uk

Email: theoldorchardnursery@gmail.com

Best to reserve a table, as we get busy

- ☒ Lots of Covered Outside Seating
- ☒ Fully Licensed
- ☒ Hot & Cold Takeaway Food
- ☒ Freshly Prepared Breakfasts & Lunches to suit all tastes
- ☒ Delicious Homemade Cakes
- ☒ Lots of Plants for Sale

Tel: 07969 778985

Heathfield Road, Burwash Common

Get in touch with our friendly team to discuss your next move

Wadhurst : 01892 782287 - Mayfield : 01435 874450
 wadhurst@burnetts-ea.com - mayfield@burnetts-ea.com

Rated within the top 500
of all Estate Agents in the UK

burnett's
Individual Property : Individual Agent

BEST
ESTATE AGENT AWARD
2024
WINNER
SALES
AWARDED FOR
MARKETING & SERVICE RESULTS

BEST
ESTATE AGENT AWARD
2023
EXCEPTIONAL
SALES

 **MAYFIELD
PORCELAIN**

Visit our showroom to discover high quality internal & external porcelain tiles

Round Wood, Newick Lane, Mayfield TN20 6RG

www.mayfieldporcelain.co.uk
 01435 512301
sales@mayfieldporcelain.co.uk





Wadhurst Bowls - steeped in tradition not stuck in the past.

Wadhurst to introduce a Youth Policy

We held our AGM last month and agreed that, amongst other things, we should as a club try and recruit some younger players.

I'm not talking about people in their fifties or sixties I mean proper young people. The type that still go to school!

I was a teenager when I first started and so were many of our current members. Other clubs have younger players, they may have the demographic which supports this, but it seems such a waste to wait until you retire to take up bowls. 'A lifetime lost'.

So, we are planning an open event over the late May Bank Holiday, where we will be encouraging teenagers AND parents to come along and give bowls a try. There are plenty of young players around at County and National level so why not at club level at Wadhurst? They had to start somewhere.

But don't worry, there will still be space for the old fogies as well!

**Laurence 07714 935915 or
hlworton@btinternet.com**

**www.wadhurstbc.com
Washwell Lane, Wadhurst, TN5 6BN.**

LAURENCE WORTON



Bowls doesn't have to be the preserve of pensioners!

WADHURST & DISTRICT U3A

If, like me, you enjoy good company, a gentle challenge, and plenty of choice, Wadhurst u3a could be the way to keep you curious, active and connected.

For £25 a year you get a warm welcome and a wide choice of things to do, learn and enjoy.

I stretch my mind with groups about Science, Art or Architecture, get creative with Art, Gardening or Life Writing and keep moving with Dancing, Walking, Croquet, Table Tennis, Yoga and Gym classes. I can also socialise and play Mah Jong, Bridge, Music, or just relax with friends for Sunday Lunch.

My u3a membership helps me make new friends and eases any feelings of loneliness or isolation and I can also help others as we explore new interests together. There are social events all year including monthly meetings on a wide variety of entertaining topics, quiz nights and concerts.

wadhurst.u3asite.uk

TIM BALL



BURWASH PLAYING FIELD ASSOCIATION

Bookings for stallholders and events can now be made directly through our website:

www.bpfa.org.uk 01435 583039

Email: bpfaswanmeadow@gmail.com

Swan Meadow Playing Fields and the Eddie Workman MBE Pavilion have hosted an amazing range of activities and events throughout November, including:

- The Community Farmers' Market - next column.
- Tuesday Village Playgroup - contact Jo Murrells.
- Brazilian Jiu Jitsu classes - contact Daniel on burwashbjj@gmail.com
- Music and Movement classes - contact Dianne on dianne@seated-exercise.co.uk (see page 15). (STILL HELD ON WEDNESDAYS)
- Football Training and Burwash FC in full swing.

100 PLUS CLUB NOVEMBER DRAW

The November draw took place at the Rose & Crown. There were 241 balls in the draw, which was made by the lovely Rosie Pugh-Morgan.

1st Ball Number	34	Gill Williams	£60
2nd Ball Number	44	Brian Newman	£30
3rd Ball Number	320	Phil Marsh	£20

100 PLUS CLUB DECEMBER DRAW

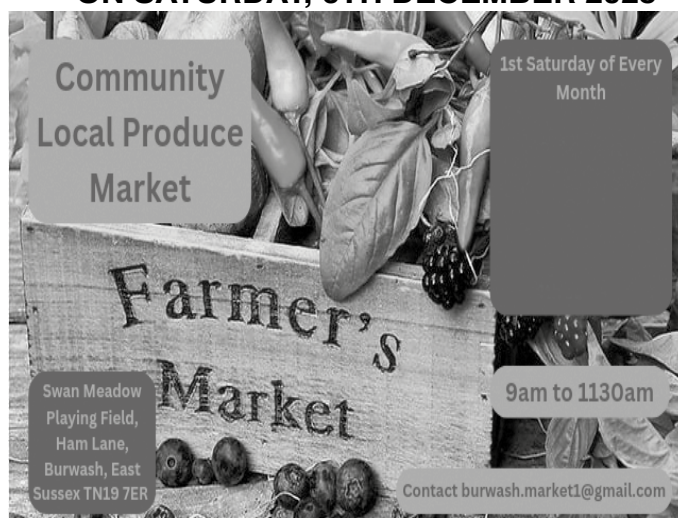
The December draw was conducted by Rosie Pugh-Morgan once more at the Rose & Crown, but with 240 balls in the draw. Please do renew!

1st Ball Number	41	Mr C.H. Woodburn	£60
2nd Ball Number	110	Ann Rumens	£30
3rd Ball Number	85	James Lylam	£20

Congratulations to the Winners!

STEVE BENNETT

NEXT BURWASH COMMUNITY MARKET IS ON SATURDAY, 6TH DECEMBER 2025



THE MONTHLY COMMUNITY FARMERS' MARKET

The November Community Farmers' Market could have been a bit of a wash-out, given the weather in the morning and the terrible rain during the night, but most of the stalls retreated into the Pavilion and a whole atmosphere exploded. It was hard to follow a conversation with so much chat and laughter.

There was a local action group presence, pumpkins being carved, pumpkin soup, a drawing table, as well as all the usual stalls. There was a slightly reduced footfall because of the weather and half-term holidays, but a good time was most certainly had by all.

The **December market** will be so exciting with new stallholders, **games (drawing table)** as well as **game (venison and wild game stall)**.

THE EDITOR



BURWASH PARISH MATTERS

following the Parish Council Meeting on 11th November

New Councillor

Mr Edward Hart has been co-opted to the Parish Council and we welcome his support of the Parish.

Burwash Parish Business Plan

Tea and Cake gatherings were held on 13th and 16th November in order to give parishioners an opportunity to meet with Councillors and discuss projects the Council is currently engaged in, possible future projects and their ideas. These may include: providing more allotments, improving the bus shelters and making better community use of local areas. The outcome of these gatherings was known too late for inclusion in these Matters but will be published in an e-bulletin which you can receive on-line by contacting Emma.

The Business Plan will be circulated to all households in December and it will include a survey for you to complete which will inform the Council as to the wishes and aspirations of the community. It is very important that the Council takes account of the views of the community and you are strongly urged to respond to the survey when it arrives through your letter box.

Finance

As previously advised, the Council is having to consider the precept (i.e., the amount of money the parish needs to carry out its responsibilities) and is very aware of the present financial climate. Costs which may not be avoided relate to the devolution of some responsibilities by the District Council to Parish Councils. At the moment, the Parish Council has a number of 'Ear Marked' funds which it has set aside for particular projects and it has to consider which of these are essential and which will have to be postponed.

Eleanor, our representative at East Sussex County Council painted a very bleak picture of ESCC finances, despite having received very positive reports on their work in troubling times.

All financial reports and minutes of meetings are available on the Burwash Parish website.

The next full council meeting is on Tuesday, 9th December at 7 p.m. at Burwash Parish Rooms and you would be very welcome to attend. The Parish Clerk is Emma Neil and she can be contacted at the Council Office, High Street, Burwash, TN19 7EU.
Tel.: 07375 809660.
Email: parishclerk@burwashparishcouncil.gov.uk

The Budget

The Council is mindful of the challenging financial times people find themselves in and is currently reviewing the budget for 2026/2027. Financial records are available on the Burwash Parish Website and you are encouraged to look there for information about what money is allocated to the parish and how that money is spent.

Environment and Maintenance Working Party Report

Of all the environmental challenges facing our planet, light pollution is perhaps the least talked about, in spite of its hugely damaging effects on human health and biodiversity. Happily it is also the easiest and least costly to fix - just switch off the light! Wild About Burwash continues to work in partnership with 10 other local parishes and the High Weald National Landscape to protect our Dark Skies and achieve Dark Sky Reserve status. A full report of their work is included in this magazine on page

Wild About Burwash has approached the Council to support its application for Burwash Parish to be designated as an official Dark Skies parish.

Dr Simon Forster recently organised an electrofishing project along the river Dudwell, the results are really positive with a large number of brown trout as well as eels, pike, lamprey and chub. It shows that the Dudwell is in good shape and we need to do what we can to protect it.

Traffic and Transport Working Party

The pavers in the High Street at Dudwell View were due to be reinstated by East Sussex County Council but this has not taken place because of the excessive quote from Highways, which only covered the area in front of one house (500 pavers) – the whole area would cost more than 4 times the original quote of £5,000. In addition, the Highways contractor had claimed the pavers held by the Council were not of sufficient quality. It was suggested that Full Council consider alternatives, although the pavers are an essential part of the historic High Street.

Neighbourhood Development Plan

The Council together with Members of the Parish are undertaking a review and would welcome members of the Public to join the team on this essential task.

CLLR BRIAN NEWMAN

Reset • Calm • Recharge

Book a personalised beauty treatment at
Nu-U The Beauty Room in rural Burwash





BOOK NOW
01435 882379

nuuthebeautyroom.co.uk



Facials & Electrolysis • Body Treatments & Massage
Wax & Tints • Manicures/Pedicures • Makeup
Premium Italian Skincare & Makeup Products

[suenuuthebeautyroom](https://www.facebook.com/suenuuthebeautyroom) 
[nuuthebeautyroom](https://www.instagram.com/nuuthebeautyroom) 

BURWASH TAXIS

24 HOUR PRE-BOOKED SERVICE

Friendly and efficient service

Business & Holiday Airport Transfers

Eurostar Transfers

Ferries and Cruise Terminals

Social and Sporting Events

Weddings

London Transfers

Account and Card Payment

Tel: 01435 883803 • Mobile: 07931 605057

Email: burwashprivatehire@hotmail.com

BURWASH NOT SO YOUNG CLUB

On the 16th October our indefatigable Programme Secretary once more stepped into the breach when several key members were unfortunately attending a local event and it is her we have to thank for this interesting report, so much appreciated Marion. Our speaker was Sarah Nathaniel, who is the Education and Publications Manager for the Commonwealth War Graves Commission. She had much fascinating information to share with our group.

Her title was 'Every Story for Evermore' as the Commission's mission is to ensure those who died in service, or as a result of conflict, are commemorated so that they and the human cost of war are remembered for ever.

Their work is global and has been going on since 1917. Sarah told us about the 1.7 million graves in 150 locations cared for around the world. The youngest loss of life was a 14 year old and the eldest 91 years old. Sadly 'remains' are still being recovered and repatriated.

Our famous local author, poet and resident Rudyard Kipling became involved in the forming of what was then called 'The Imperial War Graves Commission' as his only son John Kipling, like many thousands of other young men rushed off to enlist. It was the zeitgeist of the time amidst a general feeling that 'all was going to be over by Christmas.' As it happened, he was sent to France as soon as he was 18 in August 1915. He was killed on what was effectively, his first day in the line, at the battle of Loos, on 25th September 1915.

In the meantime, Sir Fabian Ware had been getting on with his own career ending up as a Major-General mentioned in despatches. He was involved in recording the deaths of British and Commonwealth soldiers in France and Flanders since the beginning of the War and the War Graves Commission, when formed by Royal Charter in May 1917, had the Prince of Wales as President, the Secretary of State for War (then Lord Derby) as Chair and Fabian Ware as Vice-Chairman, but the latter was actually the man who ran the show.

Carrie Kipling, (Rudyard's wife) recorded in her diary for the first time a contact between Kipling and the newly constituted Commission on 14th August 1917 with a meeting to 'discuss plans for war graves'.

Kipling, upon Ware's invitation, was appointed the Commission's Literary Adviser in October 1917. It is extraordinary that Burwash has links to what became the 'Commonwealth War Graves Commission' in 1960. The War Memorial in the High Street is engraved with John Kipling's name and there is a Panama Corner dedicated to him in the Church.

The largest majority of headstones are either Portland stone (of which Burwash Churchyard has several) or memorial stones chosen by their families. In the First World War 1.1 millions lost their lives and their families had to pay for any additional inscription. This was discontinued in the Second World War. Different nationalities can also choose a different headstone.

Funded by the Governments of Australia, Canada, India, New Zealand, South Africa and the United Kingdom, dedicated specialist staff care for graves, cemeteries and memorials at over 23,000 locations. Each cemetery is maintained by teams totalling over 1,000 gardeners who look after flowers, shrubs, local plants and trees. Many have experienced how heartbreakingly beautiful the row upon row of graves in France and Belgium are and quite rightly immaculate. There is architectural heritage that ensures the names of those who died will live for evermore, and important records are maintained internationally.

Our local school is visited by Sarah in November each year where children have the Mission explained, so they can never forget. Burwash Church often have lovely poppies made and decorated by the children. It sounds like a really moving meeting of great importance.

In November our speaker was Susannah Mayor who took us on a virtual tour of 'Smallhythe Place' (report in the February 2026 issue).

This month we meet for our annual Christmas Lunch.

VERONICA FARLEY

ADAM WATTS & ASSOCIATES
TAXATION AND ACCOUNTANCY SERVICES

*

Tax Returns for Individuals,
Partnerships and Companies

Book Keeping and Accounts Preparation
for all businesses

Capital Gains Tax Calculations

VAT Returns and Payroll

*

Tel: 01580 860264 | Mob: 07590 033151
Email: adam_watts@talk21.com



TIMRUSSELL
ELECTRICAL LTD

NIC EIC/JIB Part P Approved Electrician
Inspection & Testing

All electrical work undertaken

07771 687636

trussell.5@btinternet.com

Claremont, 109 Shrub Lane,
Burwash, East Sussex, TN19 7EB



www.paineandsonfencing.com



- DOMESTIC
- AGRICULTURAL
- DECKING
- COMMERCIAL
- LANDSCAPING
- PATIOS

07949 325828 info@paineandsonfencing.com 01580 880791

Bistro@the station

Open **Monday to Friday** from 6.30am – 2pm for breakfast, lunch & homemade specials including quiche, frittata, soups & hot drinks.

Thursday, Friday & Saturday Evenings from 6.30pm – 10pm
for wood-fired, hand-stretched pizzas from our very own pizza oven.
Fine wines & bottled beers.

Saturday Brunch 11am – 2pm
.....

Beautiful courtyard garden, quiet 'Snug' and free Wi-Fi. Meeting room available upon request.
The Bistro is available for private functions and parties of all types, just speak to Paul Collins.

Tel: **01580 819 262** or email bistroetchingham@gmail.com
Book early to avoid disappointment.



BELLE GARDENS
DESIGN & BUILD

The ultimate in
landscape design

- Consultations
- Design • Planting
- Maintenance
- Based in Stonegate
(near Wadhurst)
East Sussex
- Established 1993

Bella Ryan BA (Hons) NCH
T 01580 201354
M 07973 488 135
E bella@bellegardens.co.uk
www.bellegardens.co.uk



Frogheath Landscapes
Award-Winning Professional Landscapers



Contact the office for more information
and to book in a **FREE** site visit.

01435 883516
info@frogheath.co.uk www.frogheath.co.uk



BURWASH & DISTRICT FLOWER CLUB

What a delightful and heartwarming finale to our final demonstration of the year! Jennifer Thompson, who has been demonstrating for ten years, led us on a nostalgic journey through her treasured memories, presenting six enchanting floral arrangements inspired by beloved nursery rhymes.

A dazzling array of blossoms adorned the stage, roses of all shades and colours, white chrysanthemums, vibrant carnations and gerberas, delicate gypsophila, feathery astilbes, radiant alstroemerias, and the exotic pin cushion and orchid: each flower a living poem in its own right.

Complementing these botanical beauties were lush leaves of bay, pittosporum and phormium leaves lending their graceful presence, while ornamental cabbages, delicate palm fronds, and airy asparagus ferns added layers of texture and depth.

Objects like a spoon, teapot, and cup elegantly evoked the spirit of *Ring-a-Ring o' Roses*, while a spinning wheel conjured the playful melody of *The Wheels on the Bus*. Together, they wove a magical narrative, bringing to life the timeless joy of childhood rhymes through the beauty of flowers.

JAN MACFARLAND



THE AFTER EIGHT CLUB BURWASH COMMON

In November 2025, we had an interesting talk from Wendy, representing the Leprosy Mission. Wendy gave a most informative talk about her personal work with the mission as well as about the work of the Leprosy Mission in general.

Our Annual Christmas Dinner will be held at The Middle House in Mayfield on the evening of Tuesday, 9th December. As usual we are expecting a great evening with lovely surroundings, very good food and great company, of course.

Our meeting in January will be a Fashion Talk by Jane Elson who has had a lifetime career in the fashion industry.

Coming up, in February, we have a get together at the Burwash Common Pavilion and there will be a workshop 'Making Flowers'. Tina makes paper flowers and will be showing us how to craft a simple but effective flower.

If you would be interested and would like to come along to see what we do and who we are, please contact me or perhaps come along? We meet up on a monthly basis, sharing varied activities and most of all, enjoying friendship.

If you have any questions, please ring or email me!

JACKY WOODLAND

Email: tjwoodland142@btinternet.com

Tel: 01435 883389

Mob: 07770 489490



POETRY CORNER

THE DARKLING THRUSH

by Thomas Hardy

*I leant upon a coppice gate
When Frost was spectre-gray,
And Winter's dregs made desolate
The weakening eye of day.
The tangled bine-stems scored the sky
Like strings of broken lyres,
And all mankind that haunted nigh
Had sought their household fires.*

*The land's sharp focus seemed to be
The Century's corpse outleant,
His crypt the cloudy canopy,
The wind his death lament.
The ancient pulse of germ and birth
Was shrunken hard and dry,
And every spirit upon earth
Seemed fervourless as I.*

*At once a voice arose among
The bleak twigs overhead
In a full-hearted evensong
Of joy illimited;
An aged thrush, frail, gaunt and small,
In blast beruffled plume,
Had chosen thus to fling his soul
Upon the growing gloom.*

*So little cause for carolings
Of such ecstatic sound
Was written on terrestrial things
Afar or nigh around,
That I could think there trembled through
His happy goodnight air
Some blessed Hope whereof he knew
And I was unaware.*

Thomas Hardy (1840-1928), whose works include *Tess of the d'Urbervilles* and *Jude the Obscure*, was done with writing novels by the time he got to his late fifties, dedicating the rest of his life to poetry. Published on 29th December 1900, *The Darkling Thrush* had an original title of 'The Century's End 1900'. There is the poignant sense of things drawing to a close: the day, the year, the Victorian era.

The speaker's environment is, in the first two stanzas, an unpromising one. The 'desolate' scene he surveys – with its ghostly 'spectre-gray' frost, its 'dregs' of winter, the 'tangled bine-stems' that imply hostility and breakdown – is one from which we can imagine 'all mankind' has indeed retreated, swapping it for the warmth of the hearth. Eeriness and gloom in 'haunted' is picked up in the second stanza in 'death-lament', and the harshness of an indifferent natural world is reinforced not only in the 'land's sharp features' but also in the image of the very essence of life, 'the ancient pulse of germ and birth', being 'shrunken hard and dry'. Defeat and the departure of vitality is all around the 'fervourless' speaker as he looks out at the 'weakening eye of day'.

An unexpected transformation occurs halfway through, when into this lonely and dispiriting realm of winter twilight comes birdsong. The 'voice' that 'arose among/The bleak twigs overhead' seems to represent more than an 'aged thrush, frail, gaunt and small/In blast be-ruffled plume'; the phrase 'full-hearted evensong' carries an association of gratitude and devotion in a creature nearing the end of its own days. The 'joy illimited', the decision to 'fling his soul/Upon the growing gloom' and 'such ecstatic sound' when there is so 'little cause for carolings' are a source of wonder to the mesmerised speaker who stands listening. The only explanation for the cheerful goodwill in 'His happy goodnight air' is that the bird knows something that the speaker does not, that it is in possession of 'Some blessed Hope' of which he was 'unaware'. Until perhaps this sublime, almost mysterious moment? – with its sense of possibility beyond 'terrestrial things'.

Reading the poem as one of tentative hope is one interpretation: others are available.

JULIE LYNN

P.S. Other poems for Christmas:

What the Donkey Saw (U. A. Fanthorpe); Journey of the Magi (T. S. Eliot); Love Came Down at Christmas (Christina Rossetti); 'Twas the Night Before Christmas (Clement Clarke Moore) – this last one of course to be read aloud to children counting down the 'sleeps'.

FAIRFIELD SURGERY - PATIENT PARTICIPATION GROUP (PPG)

If you need **urgent dental care** but do not have a regular dentist, or your usual dentist cannot see you, the Sussex Dental Helpline can help. The helpline provides same-day urgent care appointments for conditions such as severe pain, bleeding and swelling, dental abscesses and broken or knocked-out teeth. It can be contacted on 0300 123 1663 between 8 a.m. and 4 p.m., Monday to Friday, or by emailing kcht.dentalhelpdesk@nhs.net If help is needed outside these hours, people can call NHS 111 free or go online to 111.nhs.uk

Covid Vaccinations (until 31st January 2026) and Flu Vaccinations (Until 31st March 2026)

continue to be available to eligible patients at Ticehurst Pharmacy during opening hours. You do not need an appointment, you can just walk in.

High Blood Pressure

With around 4.2 million people unknowingly living with high blood pressure, the campaign in September, 'Know Your Numbers', focused on locating the "Missing Millions." Blood Pressure UK urges everyone over 40 to get checked, whether at home with a monitor, in a pharmacy, or by their GP.

ARE YOU ONE OF THE MISSING MILLIONS?

Patient Transport

This is available via Friends of Burwash Surgery who have a list of volunteer drivers. If you need this service, the only way to access it is to make the request to the Receptionist at the surgery.

Bank Holiday Closures

As usual the surgery will be closed on Christmas Day, Boxing Day and New Year's Day. Make sure to order your repeat medication a week in advance.

CLAUDETTE NEVILLE
PPG SECRETARY 01435 883 043
ppg.fairfield@gmail.com

DO YOU KNOW WHERE YOUR NEAREST DEFIBRILLATOR IS? THIS COULD SAVE A LIFE!

BURWASH

Outside the Burwash Village Hall, left of the entrance.

Primary School, outside kitchen on the wall.

Batemans, at Visitor Reception (when open).

Corner of Burwash Park & Fontridge Lane.

Eddie Workman Pavilion, Swan Meadow, by main entrance door.

BURWASH COMMON

Outside Burwash Common Pavilion, left of front door.

ETCHINGHAM

In telephone box on Market Square, next to the school.

At the Station on the wall outside the gate to the Bistro.

On the wall at the Post Office.

Burwash Common and Weald Residents' Association



Open Meeting

Monday 8th December 2025 at The Pavilion

Meeting starts 7.30 pm - Doors open 7.15 pm - Bar open

Mulled Wine

Guest Speaker

Mince Pies

Mr. Eddie North

ENN Recycling, Goodsoal Lane

A local business specialising in the recycling of plastic car parts

If you have any questions, please join us

Non-members as well as members are welcome to attend our General Meetings, so if you are not already a member, come along and meet us.

Contact us by email at bewra2017@gmail.com

Grassland Advice
Soil Sampling
NVZ Advice
Holding Management Plans
Grant Support
General holding and agricultural advice
Management Advice
Project Assistance

Full Building Surveys and Homebuyers Reports
Architectural Services
Planning and Building Regulations Advice
Party Wall Matters
Schedules of condition
Building Defects Investigation

YOUR HOME AND HOLDING ALL UNDER ONE ROOF

WE AIM TO SUPPORT YOU WITH YOUR

- Home
- Small Farm
- Small Holding
- Commercial or Rental Property

IF YOU HAVE ANY QUESTIONS PLEASE GET IN TOUCH

01435866446
info@ap-surveyors.co.uk
www.applebypetfield.co.uk

Farmers & Makers Market
Second Saturday of every month



**KING
JOHN'S
NURSERY**



Indulge in lunch, coffee and cake, explore the gardens, browse plants and our eclectic shop or visit one of our great events; an escape from the usual in the heart of rural Sussex'.

Open

10am - 5pm

Thursday to Sunday

(Until 4pm November - March,
closed January)

kingjohnsnursery.co.uk

Sheepstreet Lane, Etchingham,
East Sussex, TN19 7AZ

Andy Vater Transport



- **Removal and Storage Specialists**
- **Aggregate Suppliers**

family movers & storers since 1933

Tel: 01435 863774 • Mob: 07885 852769

www.andyvaterremovals.co.uk

Burwash Festive Evening

- Stalls
- Hog Roast
- Bbq
- Mulled Wine
- Pentacle Drummers
- Meet Santa
- Plus lots more to confirm!

Wednesday 3rd DECEMBER 4pm-8pm

For more information contact
 Nina on ninaclamp@btinternet.com/01435 882713
 Or
 Pauline on the.bear.inn.burwash@gmail.com/01435 882540

WOODHILL DENTAL CENTRE

VISIT OUR WEBSITE

ARE YOU LOOKING FOR A DENTIST?
 Currently taking on **new patients**

WE'VE EXPANDED!

GET IN TOUCH TODAY!

Call **01435 873070**
 or email info@woodhilldental.co.uk

www.woodhilldental.co.uk
 Find us on Facebook & Instagram
www.facebook.com/woodhilldentalcentre
[@woodhilldentalcentre](https://www.instagram.com/woodhilldentalcentre)

Woodhill Dental Centre | Station Road | Mayfield | East Sussex | TN20 6BW

E+M PLUMBING AND HEATING

Our services :

- ✓ Gas & Oil boiler installations
- ✓ Gas & Oil boiler services & repairs
- ✓ Gas cooker installations
- ✓ Gas & Oil landlord certificates
- ✓ Central Heating installations
- ✓ Full bathroom installations
- ✓ Plumbing repairs
- ✓ Underfloor Heating installations
- ✓ Pipefitting

Contact Us:

07875748960 01825 713376
eandm.pps.ltd@live.com
eandmplumbingandheating.co.uk

Skilled professional local plumber in your area, do get in contact for a chat we are a family run business based in Nutley East Sussex.

Registered Heating Business OFTEC safe

BURWASH COMMON PETANQUE CLUB

Burwash v Ticehurst, 8th November 2025

The Club held its first ever competitive match – against Ticehurst – on the new pétanque (boules, if you prefer) pitch at the Pavilion playing fields on 8th November. As you can see from the shadows in the second picture, we were blessed with glorious weather for the time of year.

We played eight games (pairs) in total, holding our own 2 – 2 in the first round of four matches but eventually losing 5 – 3 to a more experienced Ticehurst side. The overall result masks a couple of strong individual performances – Heather and Peter Toll won both their matches 13 – 10 and 13 – 3 respectively, prompting tongue-in-cheek suggestions that Peter has been on the Sanatogen again! Our youngest player, Henry Sage found his length early on and ably assisted by his father, Rob, they won their first match 13 – 7. Other performances were not quite as strong, but we will get better with practice and as we get more experience.

Many thanks to the Burwash team – Alistair, Halina, Alison, Lizzie, Peter, Heather, Rob and Henry.

Thanks also to the Ticehurst team – Trevor, Karen, Maggie, Les, Ian, Andy, Kev and Caroline – who played the match in a friendly spirit.

Finally, thanks also to members of the Pavilion committee who gave invaluable help with the arrangements.

Our next match will probably be in January, against Ticehurst (away).

If you would like to have a go at pétanque (boules) please feel free to use the pitch at Burwash Common. You don't need to book, and it is free to use. If you would like to join our club or just need a bit of help to get started, feel free to get in touch by e-mail or phone.

LINDSAY GREEN
Lindsaygreen777@yahoo.com
07775 862846



Monthly Wellbeing Workshops

Are you at a crossroads and seeking some direction, or feeling that a new chapter is waiting to begin? Do you wish that life could start to flow in ways that are more comfortable and fulfilling?

I offer monthly small group sessions that combine a calming guided meditation with a simple creative exercise to get your guidance flowing, plus a short restorative healing. Beginners are welcome.

There's no requirement to share anything, just a willingness to be open and follow your own personal journey of discovery.

Held on the second Sunday of each month
2.30-5pm at Etchingham Village Hall, £30pp.

Please email Gabrielle Anya Rafello
info@gabrielleanyarafello.co.uk

www.gabrielleanyarafello.co.uk

Burwash Walking Footballers

(sponsored by Archway Builders - Burwash)

Burwash Walking Footballers are teaming up with Prostate Cancer UK to help raise awareness and raise funds by issuing a 'No Snacks January' challenge to all of our players, friends and supporters.

Prostate Cancer UK say: *Prostate cancer is the most common cancer in men. 1 in 8 men will get it, and if you're Black, your risk is double. We're standing together to support our dads, brothers, partners and friends – by raising awareness, funding lifesaving research, campaigning for change and providing helpful support and information.*

Burwash Walking Footballers together with men's teams all over the UK are being asked to spread the word about checking the risk as over 50's can be at higher risk. <https://prostatecanceruk.org/> for more information.



The rules for 'No Snacks January' are a lot clearer than the offside rule!

Option 1: Give up bags of crisps, chocolate bars etc. for January and at the end of the month donate the money you would have spent on them.

Option 2: Try to give up those snacks, but if you're not strong enough pay a 'fine' of the cost of each snack and at the end of the month donate the total.

Steve Mintram – Hon. Sec / Treasurer



Please contact **882444** or steve.mintram@btinternet.com for more info.



*Professional tree care
to the highest standard*



www.lsrtreesurgery.co.uk



07515 101486



Bereavement Friendship Group

For anyone who has suffered a bereavement

We meet every third Tuesday of the Month at 10:30 a.m., at the Old Orchard Café, Burwash Common.

No agenda, no talks, just a warming drink with a few people walking the same path .

Please contact Jan Wright,
laurenandjan@gmail.com

Tel.: 01435 883748 or 07444 482634 for the latest information.

Burwash Common Babies & Toddlers Group

Thursday Mornings 10-12

at the Burwash Common Pavilion, where we play, chatter, do some crafts and sing songs.

Turn up anytime from 10.00. Search for Burwash Common Babies & Toddlers for latest news.

£2.00 per family per session.

Jane Lloyd - 01435 883264



Melina Joy

OPTICIANS

Exceptional
eyecare and
individual
eyewear

59 High Street, Heathfield, TN21 8HU
01435 868181 www.melinajoy.co.uk



JOIN OUR FRIENDLY TEAM at OAKDOWN HOUSE
Supporting Adults with Learning Disabilities

GOOD RATES OF PAY

FLEXIBLE HOURS

GREAT STAFF BENEFITS

REWARDING ROLES

FULL TRAINING GIVEN



Find out more about our beautiful residential home at:

www.oakdownhouse.co.uk

Or find us on Facebook & Instagram



...Making a Difference



MAYFIELD AND DISTRICT U3A

The season of mist and mellow fruitfulness will be over by now, and so thoughts turn towards Christmas, family, time for friends and, hopefully, a positive start to the New Year.

Will the winter be cold and frosty? Warm and windy? Only time will tell, but we in the U3A are usually doing something, whether it's rushing to finish a book before the Book Club members arrive, finding something interesting for the Science Group or wiping a table tennis bat with washing up liquid to improve its spin!

Our Christmas lunch, on 18th December, will be a bit different this year, but as Sue Wright is catering we know it will be wonderful. It is instead of a December talk, and while on that subject...

In January, we have a talk by Bertie Pearce on the subject of Punch, but as known with Judy. It isn't a Punch and Judy show, and we may not even hear *"That's the way to do it!"* **It's on 15th January in the Five Ashes Village Hall, starting at 2.30 p.m.**

I am expecting a packed house, as he is a great favourite of us all. I don't think the entire audience will have known Bertie for many years, or even taught him, but many will have, and there will be hot competition for the front row.....

Thanks to our Speaker Co-ordinator, Sue Sabine, we have a full and varied list of speakers for 2026! Before then there is a welcome party for all our new members on 28th November. We really enjoy these as new members often bring new ideas or skills for us to share, and the Committee is getting quite good at producing delicious things to eat! Join us.

It costs £15, or £27.50 for a couple, and is the best value this side of Lidl. If you're not sure, come to a meeting first and try us out.

mayfield.u3asite.uk

ANNA THOMPSON

On Tuesday, 9th December Sue Jackson will be talking about 'The Art of Snow and Ice: How Artists Transformed the Winter Landscape'.

The bleak midwinter held little appeal to the artist for many centuries until Breugel's 'Hunters in the Snow' in the 16th Century. From pristine backdrop to the tempestuous snowstorms of Turner, to the capturing of 'snow effect' by the Impressionists, the ability of the artists to convey snow as a symbol of peace but also of grandeur and terror is compelling. At the end of the lecture we will be providing seasonal refreshments to members.

Then on Tuesday, 13th January we kick off 2026 with a talk by Anna Warrilow on 'The History of the City of London through Stained Glass'.

London's history is fascinating and full of colourful characters, from William Shakespeare to Dick Whittington's cat! In this lecture we gallop through almost 2,000 years of London's history brilliantly illustrated through the stained-glass windows found in the city churches and livery halls. Often overlooked, these provide a unique insight into the milestones which have made up London's story. As well as 18th, 19th and 20th Century windows, we look at some of the most up-to-date and contemporary glass makers.

The annual subscription is £50 for our exciting programme of 10 monthly lectures. We welcome guests to individual lectures for £7.50. If you would like to try us, you can come to your first lecture free of charge. Our meetings are held at the Heathfield Community Centre, Sheepsetting Lane, Heathfield, TN21 0XG at 2.15 p.m. on the second Tuesday of each month. If you wish to apply for membership, please email our Membership Secretary, John Larum: email at johnlarum@hotmail.com For queries, please contact Penny Spurrell on 07876565696.

www.theartsocietywealden.org.uk

PENNY SPURRELL - CHAIR



Many aspects of garden work including:

**Paving, fencing, hedge cutting,
garden walls, turfing, digger
and equestrian works.**

Free estimates • Fully insured

Call Andy on 07980 689733

andy.russell12@btinternet.com
www.andyrusselllandscapes.com

Locked Out?

Faulty Locks?

Call Altkey Locksmiths

- Lock opening and fitting
- UpVC Door & Window Repairs
- Independant Locksmiths
- Free Survey
- Fully Insured
- Domestic & Commercial
- 24hr Emergency Repairs
- No Call-Out Charge

Modern Service, Traditional Values

01435 408304 / 07557476699

Email: Steve@altkeylocksmiths.co.uk
Website: www.altkeylocksmiths.co.uk



English Heritage Gardens

Fine Gardens Created & Cared For

A family run business, Peter Baldock (ex Head Gardener at Pashley Manor Gardens, RHS trained), Tom Marsh (BA Hons, ARSMA) and a highly skilled team of garden experts design and develop beautiful gardens from the small courtyard to the large estate.

Come and see one of our gardens;
visit Bistro@thestation in Etchingham.

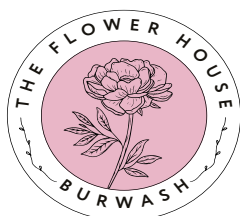
Or call us today on 01580 861294

www.englishheritagegardens.co.uk

Instagram: [@marshandbaldock](#)

Facebook: [@EHGardens](#)





FESTIVE CHRISTMAS WORKSHOP

DON'T MISS THIS!

Saturday, 13th December

Burwash Village Hall – at 1.30 p.m.
£25pp to include all the materials to make your own
festive table decoration.
Hot drink with mince pie included.

CONTACT 01435 884002
INFO@THEFLOWERHOUSEBURWASH.CO.UK



Eden's Embrace
GARDEN MANAGEMENT
Your Garden's Best Friend.

**Caring for your garden,
the way nature intended.**

- Garden Plans & Seasonal Scheduling
- Lawn & Hedge Care
- Pressure Washing & Surface Cleaning
- Fence & Shed Painting



FOR A FREE QUOTE VISIT
www.edensembrace.co.uk
OR CALL 07393 314784



J.F. LOGS + FENCING

James Firrell
07817 837 048



WAYNE CLARK

07789 198832

Friendly and Reliable
Burwash based

PAINTING & DECORATING
wayneclarkpainting@gmail.com

THE BURWASH DOG WALKER

One-To-One Dog Walking/Sitting | **Fully Insured**

No Permanent Booking Required

Contact: Caroline Huband
Tel.: 01580 493554
(evenings till 10 p.m.)

Or email Carolinehuband@outlook.com



Flimwell Flushers

Porta Loo Hire

07811 700936
flimwellflushers@gmail.com





YOUR FOOT LADY

Kate Ganley BSc (Hons) Podiatry, MchS



Mobile Podiatry/Chiropody Services

Highly experienced, friendly footcare provided in the comfort of your own home or care home.

NHS Experienced • Dementia Champion
• Autism/ Challenging Behaviour Aware

m:07790 678398 e:yourfootlady@gmail.com



Bring your body back into balance with Podiatry & Wellness Clinic

Podiatry & Wellness Clinic offers a range of treatments to ensure your feet are in tip-top condition. Lorraine Humphrey, lead podiatrist and owner of Podiatry & Wellness Clinic, prides herself in not only providing appropriate care but also on educating her patients so they can have the knowledge to improve their own foot health.

Conditions treated

- Thickened nail
- Ingrown toenails
- Corn/callus
- Bunions
- Flat feet
- Diabetes and the high risk foot
- Plantar fasciitis
- Verrucae/warts

A wider range of treatments are available at our Polegate location, including reflexology, physiotherapy, massage and acupuncture.
More information can be found on our website.

NEW VERRUCA TREATMENT!
Verrutop is our brand new treatment for verrucae and warts on the hands and feet. It's quick and effective, with a high clearance rate, and unlike other treatments, Verrutop is a painless application.


Call 07929 656255 or 01323 301480 to book an appointment.

Chaplins Hair & Beauty Treatment Rooms
High Street, Burwash TN19 7EY

E: podiatrywellnessclinic@gmail.com
W: podiatrywellnessclinic.co.uk


OUR VALUES: Dignity • Collaboration • Respectful • Trust





JW Carpenter

Specialist in the repair and restoration of antique and quality clocks



John Carpenter C.M.B.H.I.

Qualified by the British Horological Institute.
Member of the British Clock and Watchmakers Guild.

By appointment only please.

Tolhurst Lane, Wallcrouch,
Wadhurst TN5 7JG
Telephone: 07988151979.
Email: iamticking@hotmail.co.uk
www.antiqueclockrestore.co.uk



Burwash, Burwash Common, Burwash Weald and the Surrounding Areas

Recent Incidents:

There have been several instances of attempted thefts from garages and outbuildings, probably all overnight or at least under the cover of darkness. In at least one instance security lights were tampered with so that the motion detector didn't work.

It is worth checking external security regularly as it is quite common for offenders to interfere with fittings and even the power supply to stop security lights operating when it's dark.

Please be extra alert to unusual night time sounds when it is a moonlit or weather is making it a noisy night.

Scams:

One of the main scams going round right now appears to be the underpaid parcel postage scam. Nearly everyone is expecting parcels at this time of year, things they have ordered themselves or something a friend or relative has told them to expect, so when the text or email arrives saying the delivery can't be completed as postage has been underpaid it might seem plausible.

Before you respond and 'pay', **STOP** and think **SCAM**. It might be genuine but there's probably a **99% chance that it's not**.

Christmas is Coming:

Please be extra careful not to leave any property on view in your vehicles when shopping, delivering gifts or even in the drive at home. At home don't leave piles of presents in view of windows to tempt opportunist thieves.

After you've opened all those lovely presents don't leave packaging on view with the rubbish as it can serve to advertise to offenders what new items are available to steal.

Remember thieves love Christmas too, don't leave them invitations

Please do have a safe and secure Christmas and let's look to reducing crime in the area even more in 2026.

NHW by Email:

Burwash and surrounding areas - contact: steve.mintram@btinternet.com for more information.

Contacting the Police:

ALWAYS Use 999 if you think a serious offence is happening or has just happened, there is immediate danger of harm to persons, damage to property or serious public disruption.

Call 101 or visit <http://www.sussex.police.uk> for non-emergency situations (online reports are assessed in the same way as an 101 call).

Deaf, hard of hearing or speech impaired with textphone can text 18001 101, or BSL users can use SignVideo to provide a Video Relay Service <http://signvideo.co.uk/>, to report crime through a live online interpreter, who will contact the Police on your behalf, when you do not require an urgent response.

STEVE MINTRAM

CLUBS, SOCIETIES AND

LOCAL CLUBS, SOCIETIES AND OTHER USEFUL CONTACTS

SPORT AND FITNESS-RELATED

Burwash Cricket Club:

Village club playing on Sundays.

Contact: Paul Morgan-Jones on 01435 882832 or

pmorganjones@holmewoodhouse.co.uk

Burwash Lawn Tennis Club:

With courts in Swan Meadow, the club encourages people of all ages to play tennis.

Club Secretary: Ben Mayhew

Email: *burwashtennis@live.co.uk*

Burwash over 50's Walking Football Group:

Meet every Tuesday evening for a kick-around. Age is no barrier as we currently range from 51-78 years of age.

Contact: Steve Mintram on 01435 882444 for more information.

Burwash Playing Field Association:

Bringing sport, fitness and well-being to the community of Burwash.

Contacts: Chair: Natalie Crabtree

Treasurer: Theresa Fox

Bookings Secretary for Field and Edward Workman Pavilion: on-line.

All enquiries and bookings:
bpfaswanmeadow@gmail.com

***www.bpfa.org.uk* and 01435 583039.**

Burwash Short Mat Bowls Club:

Informal, friendly evening at Burwash Village Hall every Monday from 6.30 p.m. If you fancy a try, come and join us. We can supply bowls to beginners.

Contact: Mary Taylor on 01435 882107.

Burwash Football Club:

Playing on Swan Meadow, Burwash.

Contacts: Will Pugh Jones, Club Manager or Alex Roxon, Club Chairman.

Email: *burwashfc1890@gmail.com*

Burwash Snooker Club:

Plays in Burwash Village Hall. New members welcome.

Contact: Mike Hill on 07518 914391 or Ron Allen on 09760 094334.

Kipling County Carriage Driving Group:

Carriage driving for the disabled.

Contact: *kiplingcounty@aol.com*.

Seagulls over Burwash:

Burwash Brighton & Hove Albion supporters club.

Contact: Simon Forster on *simon.forster@seagullsoverburwash.co.uk*.

Walks for Strollers:

Gentle walks through the countryside. Meet at 9 a.m. in the Bear Car Park on 1st Wednesday of the month.

Contacts: Peter and Karen Farley on 01435 883141.

FOR YOUNG PEOPLE

Burwash CEP School:

With an Outstanding OFSTED rating, the head teacher is Debbie Gilbert.

Contact: 01435 882440.

Burwash CEP School Parents, Teachers and Friends Association (PTFA):

Organise social and fund-raising events to support the school.

Contact: Caroline Locke (Co-Chair) or Joanna Murrells (Co-Chair):

Etchingham C.E. Primary School:

Contact: 01580 819218.

Burwash Guides and Brownies:

Meet in the Burwash Common guide hut.

Contact: Beverley Boakes on 01435 883473.

Explorers, Scouts, Cubs and Beavers:

Meet at the scout hut, Bear Car Park, Burwash.

Contact: Bernadette Spencer on *bandescoutgroup@gmail.com*.

Musical Theatre:

Musical theatre classes from 4 -19 years, Saturdays in Burwash Village Hall.

Contact: Jonny or Sandra Ball on 882946 or *burwashmusicaltheatre@hotmail.com*

Wednesday Club at St. Barts:

After school club in church, usually on the last Wednesday of the month. A fun afternoon of craft, stories, singing and snacks from 3.30 - 5 p.m.

Contact: Revd Thomas Pelham on 07856 256 174.

Broad Oak Preschool:

Nurturing environment for children aged 2-5. Open Monday to Thursday 08.30 - 14.30 Friday 08.30 - 12.00.

Contact: 01435 864326 or email *office@broadoakpreschool.co.uk*

Burwash Village Playgroup:

Stories, singing, toys and crafts. Tuesday mornings 10 a.m. - Noon, Edward Workman Pavilion, Swan Meadow.

Contact: Jo Murrells on 07747 806 191.

St. Bartholomew's Tuesday Drop-In:

Meet in church every Tuesday in term-time from 8.30 a.m. for children to have a snack on their way to school. Mums/Dads/Carers and pre-school children come in afterwards for coffee and a chat.

Drop in or contact: Joanne Brown on 01435 830869.

St. Philip's Parent and Toddler Group:

Meet every Thursday 10 - 12 p.m. in the Burwash Common Pavilion.

Contact: Anne Everall on 01435 883247 or Jane Lloyd on 01435 883264.

LOCAL CLUBS, SOCIETIES AND OTHER USEFUL CONTACTS

Patients of Fairfield Surgery

Participation Group:

Involving patients and staff to consider and improve conditions in the Practice from a patient's perspective.

Contact: Claudette Neville on 01435 883043 or nevilleclaudette@gmail.com.

The Barnsley Foundation:

A trust with limited funds to assist the education of local young people.

Contact: Joanne Brown on 830869.

FOR OUR SENIOR CITIZENS

Not So Young Club:

Social events and guest speakers, 3rd Thursday of each month in Burwash Village Hall at 2.15 p.m.

Contact: Isabel Salmond on 01435 882452.

Burwash District Housing Association for the Elderly:

Providing homes for over 60s in our community.

Contact: Claudette Neville on 01435 883043 or nevilleclaudette@gmail.com.

Mayfield and District University of the 3rd Age (U3A):

A full programme of activities and speakers, meeting 3rd Thursday of the month at 2.30 p.m. in Five Ashes Village Hall, or Zoom, if you prefer.

Contact: Mary Brentnall on 01435 872289 or email marybrentnallu3a@gmail.com

Etchingham Tuesday Club:

Meets at various venues, no longer just on Tuesdays.

Contact: Linda Neve on 01580 819223.

HOBBIES

Burwash Horticultural Society:

Thriving branch of the society.

Contact: Richard Maude-Roxby on 01435 882243.

Burwash Flower Arranging Club:

A programme of demonstrations, craft clubs and outings.

Contact: Jan MacFarland on 07792 929523.

Burwash Monday Painters:

Meet to paint on Monday afternoons in Burwash Village Hall (Oct. to April) and at various outdoor locations May - Sept. All ages and abilities welcome.

Contact: Anne Everall on 01435 883247 or Jenny Pettman, email: petters5@aol.com

Burwash Quilters:

For all those with an interest in quilting, meet Monday mornings in Burwash Village Hall.

Contact: Julie Lewis on 01580 200280.

Etchingham Club:

Members Club. info@theetchingham.club

Bereavement Friendship Group 3rd Tuesday of month at Old Orchard Café, Burwash Common.

Contact: Jan Wright

Email: LaurenandJan@ymail.com

Heathfield and District Philatelic Society:

Meets at the Heathfield Community Centre, Sheepsetting Lane, Heathfield, TN21 0XG on 3rd Tuesday of the month from September to April.

Contact: Bob Ely on 01292 852659 or rdely@tiscali.co.uk.

Jane Coleman School of Dancing:

Dance classes for young people in Burwash Village Hall.

Tuesday, Wednesday and Friday afternoons.

Contact: Katie Dahlstedt on 01580 200961 or katiedahlstedt@gmail.com

or Rachel Elliott on 01580 714442, rachelelliott21@hotmail.com

The Arts Society Wealden Heathfield:

Meets at 2.15 p.m. on second Tuesday of the month at Heathfield Community Centre, Sheepsetting Lane, Heathfield, TN21 0XG for talks. Visitors welcome.

Contact: Membership Secretary on 01435 408635 for further details.

Burwash Duplicate Bridge Club:

We are a friendly club which meets at 1.45 for 2 p.m on Fridays. in the Pavilion at Burwash Common. We welcome guests. You do not need to have played duplicate bridge before, but you do need to be able to play bridge.

Contact: Jenny Crisford on 01435 882416 or email: jenny.crisford@gmail.com

CLUBS, SOCIETIES

SUPPORT GROUPS AND LOCAL GOVERNMENT

British Red Cross:

British Red Cross Local Services (Red Cross Week, first aid group, equipment and wheelchair loans).

Contact: 0800 0280 831.

Royal British Legion:

The active Burwash Branch supports the Legion in helping ex-Servicemen.

Contact: Charles Merchant on 01435 882360 or Steve Mintram on 01435 882444

Neighbourhood Watch:

Contact: Steve Mintram on 01435 882444.

Admiral Nurses:

Helping to support & co-ordinate care for people with dementia and their carers.

Contact: Ruth Tomkins on 01580 200743.

Burwash Parish Council:

Meeting on 2nd Tuesday of the month at 7 p.m.

**Contact: Emma Neil
parishclerk@burwashpc.org.uk**

Etchingham Parish Council:

Contact: Paulette Barton, Parish Clerk on 01580 819048 or paulette.etchinghampc@gmail.com

Rother District Council:

Town Hall, Bexhill on Sea, TN39 3JX. **Contact: 01323 787000.**

East Sussex County Council:

County Hall, St Anne's Crescent, Lewes. **Contact: 0345 6080190.**

Sussex Police (non-urgent):

Contact: 101@sussex.pnn.police.uk, or call 101 (101 calls cost 15p from landlines or mobiles) or online at www.sussex.police.uk/contactus.

VILLAGE LIFE

Bateman's:

Rudyard Kipling's home, run by the National Trust, with a full programme of events and activities throughout the year.

Contact: 01435 882302 or www.nationaltrust.org.uk/batemens for more details.

Burwash Amateur Pantomime Society (BAPS):

Annual production involving all ages!

Contact: Polly Richardson on 07903347340 or Jane Lloyd on 883264.

Burwash Bonfire Society:

Fundraising and organising the Bonfire Night firework display.

Contact: Natalie Crabtree at natcooper13@hotmail.co.uk.

Burwash Common Pavilion:

For bookings contact: Alison Hayes on 07763376158. or bcpavilionbar@gmail.com.

Burwash Common After Eight Club:

Meets monthly, open to all ladies for talks, outings, theatre and dining.

Contact: Jacky Woodland on 883389 or 07770 489490.

Burwash Defectives:

Murder Mystery Evenings, fund-raising events for your own cause. For details and to book a date.

Contact: Del Smith Tel 07543 665532 or email dellights@btinternet.com

Burwash: Save Our Fields:

Set up to oppose inappropriate development of new houses in Burwash Parish in the High Weald Area of Outstanding Natural Beauty (AONB).

Contact: burwashsaveourfields.org.uk

Wild About Burwash:

Community group focusing on the protection and appreciation of the natural environment of the Parish.

Contact: wildaboutburwash@gmail.com

Also Wild About Etchingham & Hurst Green

Burwash Village Hall:

For bookings contact: Emma Neil on 07375 809660.

Fairfield Surgery:

Open Mon-Fri 8.30 – 6.30 p.m. (Phone 111 when surgery closed.)

Contact: 01435 882306 (fax 882064).

Friends of Burwash Surgery:

Help less mobile people travel to appointments and collect medication from the Surgery. They also deliver them to Etchingham Post Office for patients to collect.

Contact: Chairman, Frank Smith, on 01580 819326 or Secretary, Sue Mumford, on 01580 819415.

Requests for transport or delivery of prescriptions should be made via the Surgery on 01435 882306.

Friends of Etchingham School:

Contact: The School on 01580 819218.

Etchingham Music Festival:

Contact: Mary Newington, www.etchinghammusicfestival.co.uk or on 01580 819384.

Londis

Great quality & value right here on your doorstep!

Christmas? It's a wrap!



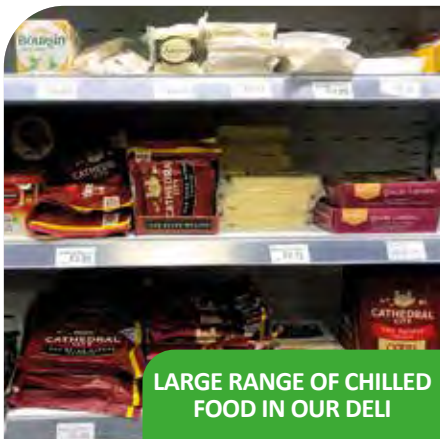
SUPERB RANGE OF FRESH FRUIT & VEG



SUPERB VARIETY OF LOCAL & INTERNATIONAL BEERS



FABULOUS SELECTION OF WINES & SPIRITS



LARGE RANGE OF CHILLED FOOD IN OUR DELI



HUGE SELECTION OF CHRISTMAS GOODIES!



CARD, GIFTS, STATIONERY AND HOUSEHOLD ITEMS



FIND US ON FACEBOOK!
Village Store Burwash



**GREAT QUALITY
GREAT VALUE**
on your everyday
FRESH fruit & veg

Christmas Eve: 6am - 6pm

Christmas Day: closed

Boxing Day: 8am - 3pm

New Years Eve: 6am - 6pm

New Years Day: 8am - 6pm

All other days 6am - 8pm
(Sundays are 7am - 8pm)

**DON'T
FORGET OUR
TICEHURST
STORE!**



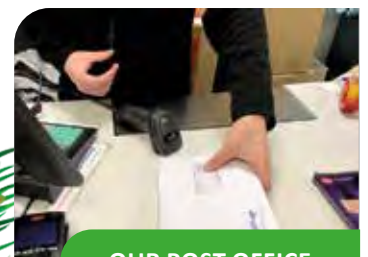
COOK
www.cookfood.net

**POST
OFFICE**



**FANTASTIC PROMOTIONS
EVERY 3 WEEKS**

**IN-STORE BAKERY WITH HOT FOOD
TO GO • CHILLED BEERS & WINE
• LOCALLY SOURCED PRODUCTS
• NEW FISH RANGE
• EXTENSIVE FRESH RANGE**



**OUR POST OFFICE
COUNTER OPEN ALL DAY**





C. WATERHOUSE & SONS

Traditional values, with a modern approach



INDEPENDENT, LOCAL & FAMILY-RUN FUNERAL DIRECTORS

EST.
1926



01435 882219 | High St, Burwash
funerals@cwaterhouse.co.uk
www.cwaterhouseandsons.co.uk