

Shanklin Chimes

Church and Community News



December
2025

The monthly magazine of
St Blasius Old Parish Church

Donation
£1.00

CARPETS DIRECT

Exceptional Service – Outstanding Value



**FITTING
SERVICE
AVAILABLE**

**ROLLERS
VERTICALS
WOODEN
VENETIAN**

CURTAINS

SHUTTERS

*Come and see all types of curtains,
blinds and shutters in our purpose
built showroom*

in store at Carpets Direct

CALL US TODAY TO ARRANGE YOUR FREE MEASURE & QUOTE



58-60 REGENT STREET, SHANKLIN

864624

www.carpetsdirectiow.com

CARPETS DIRECT

Exceptional Service – Outstanding Value



**CARPETS
VINYL
LAMINATES
LVTs**

TRIPLE BONUS RANGES

- BONUS 1**
FREE Fitting ✓
- BONUS 2**
FREE Underlay ✓
- BONUS 3**
FREE Door Bars ✓

*T&C apply ask for details



CORMAR
CARPET CO



ABINGDON
FLOORING

manx
Tomkinson

moduleo
design floors

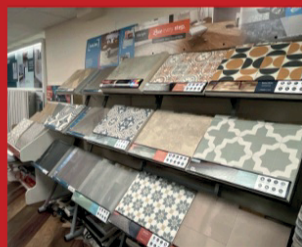


gaskell WOOL RICH
timeless comfort



TELENZO
CARPETS

CALL US TODAY TO ARRANGE YOUR FREE MEASURE & QUOTE



58-60 REGENT STREET, SHANKLIN

864624

www.carpetsdirectiow.com

Shanklin & District History Society



Meetings with a speaker and archive display are held at the Falcon Cross Hall (next door to the library) on the first Thursday of the month at 7.25

Visitors are welcome

For details of talks and other events please see our website

shanklinhistory.net



CAN YOU HELP US by adding an item from our most needed items in your nearest supermarket collection basket?



To find out what and where to donate or to make a financial donation, please visit our website:

isleofwight.foodbank.org.uk

Local People Helping Local People in Crisis

Today on the Isle of Wight there are families struggling to put food on the table. No money + no food = crisis. Isle of Wight foodbank provides 3 days worth nutritionally balanced emergency food parcels to local people in crisis.



Enjoy a delicious breakfast, slice of freshly baked cake or home cooked lunch at The Old Smithy, Godshell

01983 840364 - Open 363 Days a Year - www.theoldsmithy.com



Embracing Age - Isle of Wight

We are a registered Island charity that supports care home residents without family and friends or those suffering isolation and loneliness.

Would you like to volunteer with us as a befriender, card maker/deliver, crafter, flower arranger or animal connections volunteer through your pet? For more information please contact our coordinator Rebecca Savage.

rebecca@embracingage.org.uk or Tel. No 07419338066



Steve Scutt DECORATING CONTRACTOR **ESTIMATES FREE**

INTERIOR & EXTERIOR PAINTING GLAZING COVING
PAPER HANGING SPRAY FINISHES TILING

Tel: 01983 863768

Email: steviescutt@talktalk.net

The better days cafe *Inclusion hub*

Fresh Cakes, Fresh Soups, Sandwiches, Waffles and more...
all available at our stunning vintage tea-room
complete with games room and kids room.

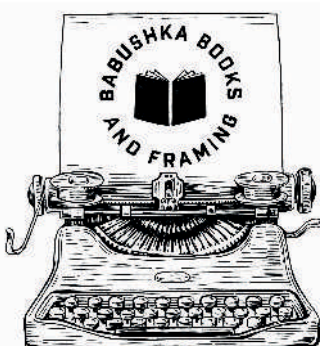
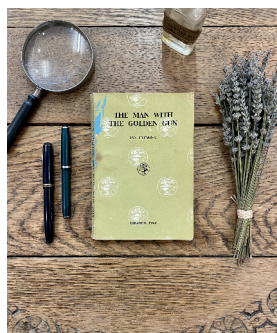
Monday - Saturday
10am - 5pm

64 High Street, Ventnor.



Babushka Books

Booksellers & Picture Framers



67 Regent Street
Shanklin PO37 7AE
(01983) 652880
reuben@babushkabooks.co.uk

Rare Books & Prints
1st & Signed Editions
New & Secondhand
Picture Framing Service

The Foot Therapy Centre

TAKING ON NEW PATIENTS AT 1A CHAIN LANE NEWPORT

Routine treatment including nails, hard skin, corns, verrucas, ingrowing toe nails, fungal nails, cracked heels ect

Michael Tattersall BSc Hons RCpod

Member of Health Care Professions Council

Member of Royal College

Email dr.goodfeet@outlook.com Tel **07387 402 557**

The Foot Therapy Centre, 1a Chain Lane Newport, PO38 5QA

**NEW
PATIENTS
WELCOME!**

St. Blasius Old Parish Church

Magazine

**SHARING GOD'S LOVE FOR ALL
Worshipping, Serving, Growing
TOGETHER**

— CHURCH SERVICES —

We warmly invite you to join us - See details on Page 3

For enquiries relating to Banns and Marriage services, Baptisms and Funerals
please contact: Revd. Tony Richards (details below)

Local Minister:	Revd. Tony Richards.	Tel: 863607
Curate:	Revd. Karen Crowhurst	Tel: 867727
Churchwardens:	Mr. Robert Crawley. (VACANT)	Tel: 868436
Hon. Secretary:	Mrs Jane Wilshaw	Tel: 07484 235103
Hon. Treasurer:	Mr. Robert Crawley.	Tel: 868436
Anna Chaplain:	Mrs Jane Wilshaw	Tel: 07484 235103
Safeguarding	Miss Pam Dana	Tel: 863189
Deanery Synod Members:	Lady Annie Walker Miss Pam Dana	Tel: 07958 454849 Tel: 863189
Freewill Offering:	Mr. Robert Crawley and Mrs. Joan Roberts.	Tel: 864299
Magazine Editor:	Mrs. Erica Hall editor.shanklinchimes@gmail.com	Tel: 884529
Magazine Advertising:	Miss. Pam Dana.	Tel: 863189
Electoral Roll Secretary:	Mrs Annette Richards	Tel: 863607
Children's Society:	Mrs. Charlotte Coppin	Tel: 07724 852024

Cost of Magazine: £1.00 DONATION

St Blasius Old Parish Church, Church Road, Shanklin, PO37 6QY

NEW website: www.achurchnearyou.com/church/16793/





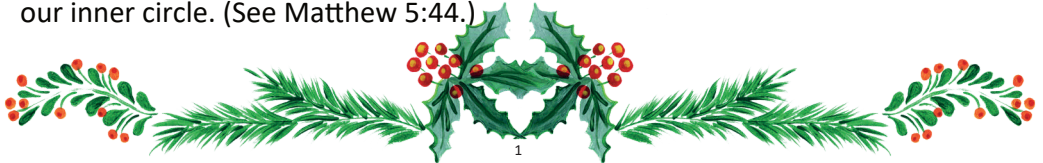
Thought for the Month

As we come to the end of the Christian year and look forward to the joy of Jesus coming into the world, we have the opportunity to ponder the year past with all its joys difficulties and sadness. Perhaps not a penitential season, Advent offers an opportunity to reflect on the past year as we look forward to the future. It's as if we are making preparations prior to the arrival of a friend or honoured guest: a chance for us to prepare for the Christmas celebration and its meaning in our lives.

For a people of faith, it's not just another holiday or an excuse to party with friends, but rather a chance to renew old acquaintances, bring families together and reach out to the world, as we look forward to the birth of our Saviour.

For the Christian, Advent is a time we can meditate on the need for Christ in a troubled world and look into ourselves at how painful it can be to confront our weaknesses. With reflection and prayer, we can come to know how much we need God and Christ in our lives. The closer we want to get know Jesus, the more we become aware of our own shortcomings and those of the world around us.

Advent reflections can enable us to cope with unkindness or impatience in others; and to understand why and when we have reacted badly to criticism, just or unjust; to think about how we have loved our enemies and tried to understand and pray for those who annoy us; and try to do good to those who aren't part of our inner circle. (See Matthew 5:44.)



To help us in our Advent reflections, here are some words of wisdom from Pope Benedict's Christmas Day homily in 2008.

"Only if people change will the world change; and in order to change, people need the light that comes from God, the light which so unexpectedly [on the night of Christmas] entered into our night."

(from Pope Benedict's Homily on December 25, 2008)

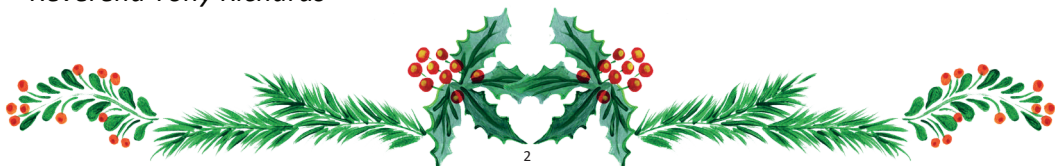
For change to happen, we need the light that comes from Christ himself. During Advent we can all echo in our hearts this beautiful prayer of St Teresa of Calcutta:

*Dear Jesus,
I believe You are the Son of God and my Savior.
I need Your love to cleanse me from
my mistakes and wrongdoings.
I need Your light to drive away all darkness.
I need Your peace to fill and satisfy my heart.
I now open the door of my heart and ask You
to please come into my life, (heal me),
and give me Your gift of eternal life. Amen.*

St. Teresa of Calcutta

May the rest of your Advent journey be blessed!

Reverend Tony Richards



OUR CHURCH SERVICES IN DECEMBER

*You are warmly invited to join us for
Our Christmas Celebrations*



Sunday 7th December

10.15am Holy Communion

Reverend Tony Richards

Monday 8th December

10.30am Dementia Friendly Service

Reverend Karen Crowhurst

Sunday 14th December

No morning service

4.00pm Service of Nine Lessons and Carols

Reverends Tony Richards and Karen Crowhurst

Sunday 21st December

10.15am Holy Communion

Reverend Tony Richards (tbc)

CHRISTMAS EVE

4.00pm Family Carol Service

10.00pm Holy Communion

Reverends Tony Richards and Karen Crowhurst

CHRISTMAS DAY

11.00am Holy Communion

Reverend Karen Crowhurst

Sunday 28th December

10.15am Holy Communion

Reverend Karen Crowhurst





PRAYERS FOR THE MONTH
Sunday and Special Collects for this month
(with endings omitted)



7th December - Second Sunday of Advent

O Lord, raise up, we pray, your power and come among us,
and with great might succour us; that whereas, through our sins and wickedness
we are grievously hindered in running the race that is set before us,
your bountiful grace and mercy may speedily help and deliver us...

14th December - Third Sunday of Advent

O Lord Jesus Christ, who at your first coming sent your messenger
to prepare your way before you:
grant that the ministers and stewards of your mysteries may likewise so prepare
and make ready your way by turning the hearts of the disobedient
to the wisdom of the just, that at your second coming to judge the world
we may be found an acceptable people in your sight...

21st December - Fourth Sunday of Advent

God our redeemer,
who prepared the Blessed Virgin Mary to be the mother of your Son:
grant that, as she looked for his coming as our saviour,
so we may be ready to greet him when he comes again as our judge...

CHRISTMAS DAY

Almighty God,
you have given us your only-begotten Son to take our nature upon him
and as at this time to be born of a pure virgin:
grant that we, who have been born again and made your children by adoption
and grace, may daily be renewed by your Holy Spirit...

28th December - First Sunday of Christmas

Almighty God, who wonderfully created us in your own image
and yet more wonderfully restored us through your Son Jesus Christ:
grant that, as he came to share in our humanity,
so we may share the life of his divinity; who is alive and reigns with you,
in the unity of the Holy Spirit, one God, now and for ever.



FESTIVALS IN DECEMBER

From the Church of England Calendar



- 1 Charles de Foucauld, Hermit in the Sahara, 1916
3 Francis Xavier, Missionary, Apostle of the Indies, 1552
4 John of Damascus, Monk, Teacher of the Faith, c.749
4 Nicholas Ferrar, Deacon, Founder of the Little Gidding Community, 1637
6 Nicholas, Bishop of Myra, c.326
7 Ambrose, Bishop of Milan, Teacher of the Faith, 397
8 The Conception of the Blessed Virgin Mary
13 Lucy, Martyr at Syracuse, 304
13 Samuel Johnson, Moralist, 1784
14 John of the Cross, Poet, Teacher of the Faith, 1591
17 O Sapientia
17 Eglantyne Jebb, Social Reformer, Founder of 'Save The Children', 1928
24 Christmas Eve
25 Christmas Day
26 Stephen, Deacon, First Martyr
27 John, Apostle and Evangelist
28 The Holy Innocents
29 Thomas Becket, Archbishop of Canterbury, Martyr, 1170
31 John Wyclif, Reformer, 1384

Angels from the realms of glory, wing your flight o'er all the earth;
Ye who sang creation's story now proclaim Messiah's birth.
Come and worship, worship Christ, the newborn King.

Shepherds, in the field abiding, watching o'er your flocks by night,
God with us is now residing; yonder shines the infant light:
Come and worship, worship Christ, the newborn King.

Sages, leave your contemplations, brighter visions beam afar;
Seek the great Desire of nations; ye have seen His natal star.
Come and worship, worship Christ, the newborn King.

Saints, before the altar bending, watching long in hope and fear;
Suddenly the Lord, descending, in His temple shall appear.
Come and worship, worship Christ, the newborn King.

Though an Infant now we view Him, He shall fill His Father's throne,
Gather all the nations to Him; every knee shall then bow down:
All creation join in praising God, the Father, Spirit, Son,
Evermore your voices raising to the eternal Three in One.

James Montgomery 1771-1854



Nine Lessons & Carols

Sunday

14th December

4.00pm

St Blasius Church
Shanklin

With the St Blasius
Church Choir

Come and sing
all your favourite carols

Everyone
Is Very Welcome

All Island MU Advent Service

11.30am

Wednesday 3rd December
at St Blasius Church
Followed by a
“bring and share” lunch



Coffee Morning with Christmas Craft Sale

Monday 1st December

10am -12noon, at St Blasius Church





The Light of Christmas

Light a Christmas candle,
And remember as you do
The light sent into the world
At Christmas time for you.
The Lord, who gave His only Son
A child in manger stall,
A light to shine in darkness
To lead us when we fall.
If we would stop and wonder
Amid the tinsel and the snow
The babe within that manger
Who came so long ago
Is with us still to help us
He will answer when we call
The Light that came at Christmas
Is shining bright for all.

Peggy Thompson
From A Brighstone Book of Seasons



Ride and Stride Adventures by Miss Susan Osborne CBE

After a very stormy, thundery and wet beginning, on Saturday September 13th, I set out with my best friend, Jane Wilshaw for a day out across the Island, embarking on the “Ride and Stride” Church visiting challenge. We laughed, we almost cried when post codes were inaccurate and nearly did a Thelma and Louise drive over a cliff but were never deterred from our Mission.

We commenced our marathon at St. Blasius, Shanklin. We were welcomed warmly and enjoyed a home-made cheese scone and cup of tea to wend us on our way. Welcomes were everywhere. We had to turn down Newport’s open Church, which offered delightful refreshments, in order to keep to our timetable of visits. The Church of the Holy Cross at Binstead, provided us with a nice cup of tea, biscuits, and a toilet stop. Sadly, we were thwarted visiting Bonchurch St Boniface and St Boniface Old Church due to an emergency road closure and so travelled on to reach St. Olaves at Gatcombe.

Jane and I had a very happy ending to our day out by indulging in dinner at the Waterfront Restaurant at Totland Bay. This was followed by listening to a concert organised by the West Wight Arts Association (W.W.A.A.), Manus Noble, a classical guitarist, held at the Memorial Hall, Freshwater.

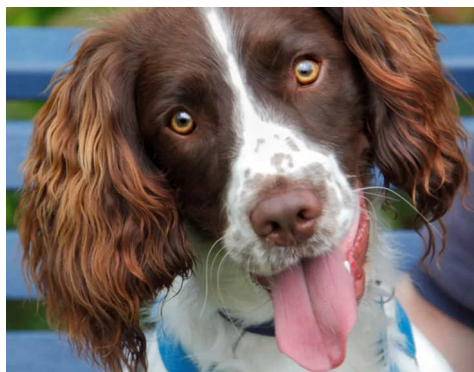
On our return home, we drove along the Middle Road in order pay homage to St. Peter’s at Shorwell and St. Mary’s at Brighstone, giving them both a wave, because at 10 pm they were closed.

In total, we visited nineteen of the magnificent churches on our list which resulted in Jane raising over £500 through generous sponsorship. A grand day out indeed, both exhausted with joyous memories of the wonders of our Island.

Postscript by Jane Wilshaw

I volunteered for achieving 100 miles of walking in October with my dog. I have requested that the money is donated to our local RSPCA branch. If any of you reading this would like to sponsor us, I would be very grateful.

BUT do ensure you select
RSPCA Isle of Wight Branch



<https://www.rspca.org.uk/getinvolved/membership>

The Isle of Wight Branch of the RSPCA

I have just become a Trustee of the **RSPCA Isle of Wight Branch**. Most people do not realise when they donate to the RSPCA, the money goes to the main RSPCA and NOT to our local Branch.

Although our Island re-homing Centre is affiliated to the RSPCA, we only receive a grant of £50,000 a year. Our Centre needs £800,000 a year to function. We have relied heavily on legacies, which due to the present economic crisis are minimal. Our focus has to change to increasing membership, corporate membership and regular donations to RSPCA Isle of Wight Branch.

Although a small charity, the work it does to care for animals that have been subjected to cruelty, neglect and deprivation is phenomenal. Sadly, cruelty and neglect to animals is a feature on our beautiful island and one which if we all came together could be reduced significantly, giving all those poor animals a happy life. Due to legalities, I cannot describe some of the cases the Centre deals with except to say that once the criminal proceedings have been completed, the animal is adopted by the RSPCA and re-homed. This can take up to one year. The dedicated staff at the Centre provide the most wonderful care to those animals during that time.

We urgently need the help of all Islanders to help us achieve our Mission of 'not looking away', when we come across animals that have been treated cruelly, subjected to neglect and deprivation - but to ensure they all 'have a happy ending'.

Membership to the RSPCA Isle of Wight Branch is only £24 a year. Corporate membership starts at £500 to £1,500 a year and the Branch will promote your company on its website and at the Centre.

To become a member or donate use this link:

<https://www.rspca.org.uk/getinvolved/membership>

BUT do ensure you select
RSPCA Isle of Wight Branch



Article kindly contributed by Miss Susan Osborne CBE



A Concert of Love and Remembrance

A Tribute to my brother David Dana

On Saturday evening 18th October 2025, our church family and many other friends gathered with me at St Blasius, our home church, for a very special occasion – a concert organised by me in loving memory of my late brother David who succumbed to Alzheimer's in April. As the evening unfolded it was far more than a musical event – it was a celebration of David's life, his love of music, his interest in natural history and his talent for helping people. David was also a member of *Wight Harmony* – the Isle of Wight's Barber Shop singers - and so I enlisted the help of Dave, their Musical Director, for this special event. True to form, these amazing people performed, together with *The Blue-Eyed Boys*, *Flat Wight* and the *Solent City Chorus* (who specially came over from Portsmouth to sing for us).

This was not just a performance - it was their gift – an offering of appreciation and gratitude for the times they shared with David; and we listened to several amusing anecdotes about David and his enthusiasm and kindness.

Throughout the evening we heard others speak about David...

- * Jackie Ridley had composed a lovely poem from a booklet I had produced about David, which was read by my nephew Richard Dana.
- * Maggie Bennett, who is the CEO of Alzheimer Cafe I.O.W., gave us a very interesting and informative talk on the care of people living with Alzheimer's here on the Island.
- * Thank you also for Viv's Cooking for her delicious refreshments.
- * Special thanks to Reverend Karen Crowhurst for presenting the event.

It was a lovely evening and the concert served not only to honour David's memory, but was also made so special by the people who entertained us and helped to raise an amazing £800 for Alzheimer's I.O.W.

My grateful thanks to everyone who participated and those who attended, making it possible to raise this wonderful gift for the charity.

Pam Dana



Christmas Services

at St John's Church, Sandown

Saturday 20th December 4.00 pm
Family Carol Service

Christmas Day 11.00 am
Holy Communion

*The Word became flesh and made his dwelling
among us. We have seen his glory, the glory of
the one and only Son, who came from the
Father, full of grace and truth.*



It's Christmas Again!

My goodness, my goodness, it's Christmas again.
The bells are all ringing and I don't know when I've been so excited!
The tree is all fixed and the candles are lighted,
The pudding is mixed, the wreath's on the door
And the carols are sung,
The presents are wrapped and the holly is hung.
The turkey is sitting all safe in the pan
And I am behaving - as calm as I can!

Marchette Chute

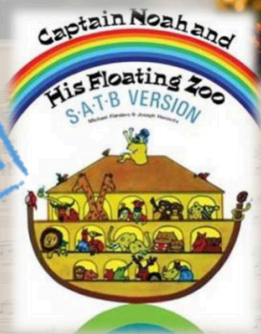
Simon Langton Grammar School for Boys, Canterbury

Chamber Choir

Directed by Emily Renshaw-Kidd



ON TOUR



Simon Langton Grammar School for Boys' Chamber Choir perform

Captain Noah and his Floating Zoo
by Horovitz and other
Christmas repertoire.

Saturday 6th December 7pm

St. Blasius' Church, Shanklin PO37 6QU



Retiring collection for church funds



Copy Deadline for January Magazine - Wednesday 10th December

Lyn's Cafe @Flemink

(The Old NatWest Bank, Shanklin)

Telephone: 07484143527

Delicious Home Cooked Food

Cakes, Scones (Homemade Jam),
Sausage Rolls, Soups. Specialist Teas,
Coffee, Hot Chocolate. Jackets,
Baguettes, Toasted Sandwiches,
Omelettes, Crepes, and Waffles.

EAT IN or TAKE AWAY

Open Monday - Saturday

10.15am to 3.15pm

THIS SPACE COULD BE YOURS!

**To advertise
your business here**

contact Pam Dana

(01983) 863189



Isle of Wight Federation
SHANKLIN HYDE WI

Secretary - Marion Tuck

Telephone: 07817 446691

Email:

shanklinhydesecretary@gmail.com

**Meetings held at the
The Catholic Church Hall
Atherley Road
Shanklin, PO37 7AT**

second **Tuesday** of each month
@7.30 pm
(No meeting in August)



**Shanklin
Community
Library**

Opening Times

**Monday,
Wednesday and
Friday**

9:30am-12:30pm & 1:30pm-5:00pm

**Saturday Mornings
9:30 - 12:30**

More details available on
01983 717184 or e-mail us at

shanklincommunitylibrary@hotmail.co.uk



The Abbeyfield Shanklin Society Limited provides supported, sheltered housing. Harwood Court is a modern and spacious home with 16 apartments arranged over two floors (with a lift). We have a beautiful lounge with sea views.

Our Kitchen team provides two home-made meals every day. Abbeyfield is ideal for fit and well people who wish to live independently in a small and safe community.

For further details or to arrange a visit please phone or email:

Tel: 01983 862937

Abbeyfield-Shanklin@Abbeyfield.com

Harwood Court, 14 Queens Road Shanklin, PO37 6AN



Regent Pharmacy

59 Regent Street

Shanklin PO37 7AE

Tel: (01983) 863677

Your Local Independent Pharmacy

Opening Hours

Monday to Friday 8.30am - 6.00pm

Saturday 9.00am - 5.30pm

Sunday CLOSED

Please note we are closed every day between 1pm - 2pm



**HOLLIERS
HOTEL**



Holliers Hotel is 200 years old and we are working hard to bring her back to her former glory. Rooms available from £50 per night. Follow us on Facebook for events info

Carvery
Every
Sunday
12 -5



New small plates menu
1 plate £7
3 Plates £19
5 plates £30 with a bottle of wine £40

Bar
open
to all



Contact us
3-5 Church Road
Shanklin Old Village
Call 01983 862764

Email:
theholliershotel@outlook.com

Wight *Sound*Hearing

The *deLuxe* DIGITAL HEARING AID CENTRE

12 High Street, Shanklin

Tel 01983 865959

Registered Healthcare Professional

Colin Stockdale

RHAD MSHAA AIHHP

(Executive Member)

Local Hearing Aid Consultant
with over 28 years experience



All Hearing Tests and
Consultations are FREE

Latest Digital Testing & Fitting
Equipment

Try Before You Buy
OR RENT a Digital Hearing Aid
(£1 A DAY)

FREE Home Visits

Every Brand of Hearing Aid
Available in the UK

Easy Payment Plans

Digital Hearing Aids from £295

**"We don't just sell hearing
aids, we provide total
hearing care"**

Including Ear Wax Removal





HONNOR & JEFFREY

find us on the web: www.honnorandjeffrey.com



DALVERTON GARDEN CENTRE

Lake, Sandown, Isle of Wight, PO36 9PJ

Tel: (01983) 868602 Fax: (01983) 868601



AFTON GARDEN CENTRE

Afton Road, Freshwater, Isle of Wight, PO40 9UH

Tel: (01983) 752870 Fax: (01983) 756693

Coastal Mobility

THE ISLANDS PREMIER MOBILITY SPECIALISTS

56 Regent Street, Shanklin. PO37 7AE

Tel: 01983 866431

9 St. Thomas Square, Newport. PO30 1SN

Tel: 01983 533500

Email: coastalmobility@hotmail.com

JULIE

(State Registered Hairdresser)

Ladies and Gentlemen's

Hair Stylist

In your own home

For appointments ring

07855 190112

Between 4.30pm and 6.30pm

Contact

Mike Odell

Painter & Decorator

35 YEARS EXPERIENCE

REGISTERED INDEPENDENT
TRADESMAN

FREE ESTIMATES

Mobile 07398 113635

Home 01983 409793

SHANKLIN HEALTH STORE

Est. over 40 years

Mon - Sat 9.30am-4pm

(Except Wednesday: 9.30am-1pm)

Your local independent
Health Store

Special Dietary Foods and
Supplements

Local Produce, Organic
and non-Organic Groceries

Good Quality and Good Value

Free local delivery service

25 High St. Shanklin, PO37 6JW

Tel: 01983 863063

shanklinhealthstore@live.co.uk

William Hall

INDEPENDENT FUNERAL DIRECTORS

Established 1992



www.williamhallfuneraldirectors.com

OFFICE AND CHAPELS (24 HOURS)
(01983) 868688

PERSONAL ATTENTION DAY OR NIGHT

Full funeral services arranged to individual requirements

- PRIVATE CHAPELS OF REST •
- FLEXIBLE PAYMENT PLANS • CARING FOR THE COMMUNITY •



Golden Charter
Funeral Plans



**Sunnybrow, Winford Road, Newchurch
Sandown, Isle of Wight, PO36 0JX**



SPRINGWOOD

Woodland Burials

www.springwood-cemetery.com



For details of burials that have important benefits for the environment
contact

WILLIAM HALL INDEPENDENT FUNERAL DIRECTORS

**Sunnybrow, Winford Road, Newchurch, Sandown
Isle of Wight, PO36 0JX**

(01983) 868688

Email: hallw@btinternet.com



**Crowned best
outdoor hidden
gem in the UK!**
Voted by Gazeer.com

**Unlimited FREE
returns
within 7 days**



**Visit one of the Island's most
historic and beautiful attractions!**

**Open daily from
3rd April - 2nd November 2025.**

Please check our website for specific dates and opening times.

SCAN ME!



Shanklin Chine has long been at the forefront of countless childhood holiday memories with its main waterfall, tumbling down the cliff edge from 45 feet being a key feature.

Enjoy events such as character meet & greets, a Halloween Spooktacular, live music and as day turns to dusk, Shanklin Chine is transformed as hundreds of lights are turned on creating a magical and enchanting evening.

Shanklin, PO37 6BW | 01983 866432 | shanklinchine.co.uk | Follow us on   

**Visit our 'pub on the beach',
Fisherman's Cottage Inn...**

SCAN ME!



Nestled beneath Shanklin Chine and located on the beach at the end of Shanklin Esplanade, the Fisherman's Cottage Inn is the perfect spot to enjoy breakfast, lunch or dinner.

2025 Pub Opening Times

Opening times may vary. Please see our website, social media or call our booking office.

To book a table inside contact bookings@shanklinchine.co.uk

Shanklin Esplanade, PO37 6BN | 01983 863882 | fishermanscottageinn.co.uk | Follow us on  

SHANKLIN JEWELLERS

REGENT STREET, SHANKLIN, ISLE OF WIGHT



YOUR LOCAL INDEPENDENT FAMILY JEWELLERS

SPECIALISING IN PRE-OWNED GOLD & DIAMOND JEWELLERY

AGENTS FOR SEIKO, BULOVA, ACCURIST & STORM WATCHES.

GREAT SELECTION OF MODERN SILVER JEWELLERY.

CLOCKS & GIFTS FOR ALL OCCASIONS.

WATCH, CLOCK & JEWELLERY REPAIRS AT REASONABLE CHARGES.

WATCH BATTERIES & STRAPS FITTED TO ALL MAKES OF WATCH.

PHONE: 01983 862871

EMAIL: JEWELLERS@BTINTERNET.COM

JMW ELECTRICAL
Electrical Contractors
jmwelectrical.iow@gmail.com

Jason Whitehead
Director

20 Nunwell Street
Sandown PO36 9DE

07968 335159



**Complete
Electrical
Services**



funeralcare.co.uk



Rated
Excellent
★ Trustpilot

We're on hand in your 24/7 hour of need.

Whether your planning ahead with a funeral plan or when a loved one passes away, end-of-life care needs to be dependable, compassionate and ethical. With decades of experience, our trusted funeral services are available whenever you need us on **0800 008 6878**.

Caring for local families for generations.

Local to you in: **East Cowes • Freshwater Lake • Newport • Ryde • Shanklin**

southern coop

southern coop

The
co-operative
funeralcare

The **co-operative** funeralcare



NEWBELLS

AUDIO VISUAL • ELECTRICAL
HARDWARE • LIGHTING

Great value since 1998

2A Landguard Road, Shanklin

(Corner of High Street and Landguard Road)

Telephone: 01983 863171

Florist The Flowering Cactus

The Flowering Cactus is a floral design studio, capturing the beauty and essence of every occasion whether it be a glamorous event, a little gesture of kindness or to remember a loved one

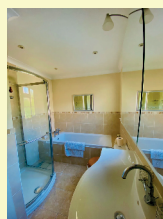


www.thefloweringcactus.co.uk
07856263632

AIR BED & BREAKFAST *(Super Host)*

Double Room in cosy Victorian cottage - Shanklin Old Village

Ideal for family and friends who need somewhere to stay for Weddings, Funerals and other special occasions, or for a quiet break.



Tel: 07973736084 Email: mcpayne54@gmail.com

GUINOT

INSTITUT • PARIS



Caroline Scutt **BABTAC**

Guinot Youth and Lifting facials, waxing, Lash lifts and tints,
Cryotherapy freezing removal of warts, sun pigmentation,
skin tags, verrucae and cherry angiomas,
infra-red heat massage, red vein removal, electrolysis,
warm wax hand and foot treatments, gel nails.

Private Home Clinic with plenty of parking

Phone 01983 863768 or 07742722930



FIND AN ALZHEIMER CAFÉ near you

An Alzheimer Café is a meeting place that gives informal education and advice about dementia and offers guidance and signposting to other services. We welcome people with dementia, their families, carers, professionals, and people with an interest in dementia.

EAST COWES

1st Tuesday of the month

2PM - 4PM

Town Hall, York Avenue

East Cowes

PO32 6RU

COWES

2nd Weds of the month

2PM - 4PM

Football Club

Reynolds Close

(off Park Road)

PO31 7NT

TOTLAND

3rd Weds of the month

2PM - 4PM

St Saviour's

Holy Family Centre

Weston Lane

Totland

PO39 0HE

SANDOWN

4th Weds of the month

2PM - 4PM

The Broadway Centre

1 Broadway, Sandown

PO36 9GG

NEWPORT

Last Thurs of the month

6PM - 8PM

Newclose County Cricket

Ground

Blackwater Road, Newport

PO30 3BE

RYDE

1st Weds of the month

11.30PM - 1.30PM

All Saints Church Hall

Queens Road

Ryde

PO33 3BG

ACE7, an Alzheimer Café for people with young-onset dementia (age 65 and younger) runs on 1st and 3rd Tuesday of the month from 10AM - 12PM at Parklands Park Road, Cowes, PO31 7LZ

🌐 www.alzheimercafeiw.org.uk

✉ info@alzheimercafeiw.org.uk

📞 **01983 220200**

scan the QR to
visit our website

