

NOTES
DO NOT SCALE FROM THIS DRAWING
ALL DIMENSIONS TO BE VERIFIED ON SITE

LITURGICAL WEST

LITURGICAL EAST

03 PLAN
ROOF



| REVISIONS | | | |
|---|----------|-------------|------|
| A | 20251127 | PRELIMINARY | |
| 1 | 2 | 4 | 6 8m |
| SCALE MEASURES 8CM WHEN CORRECTLY PRINTED | | | |

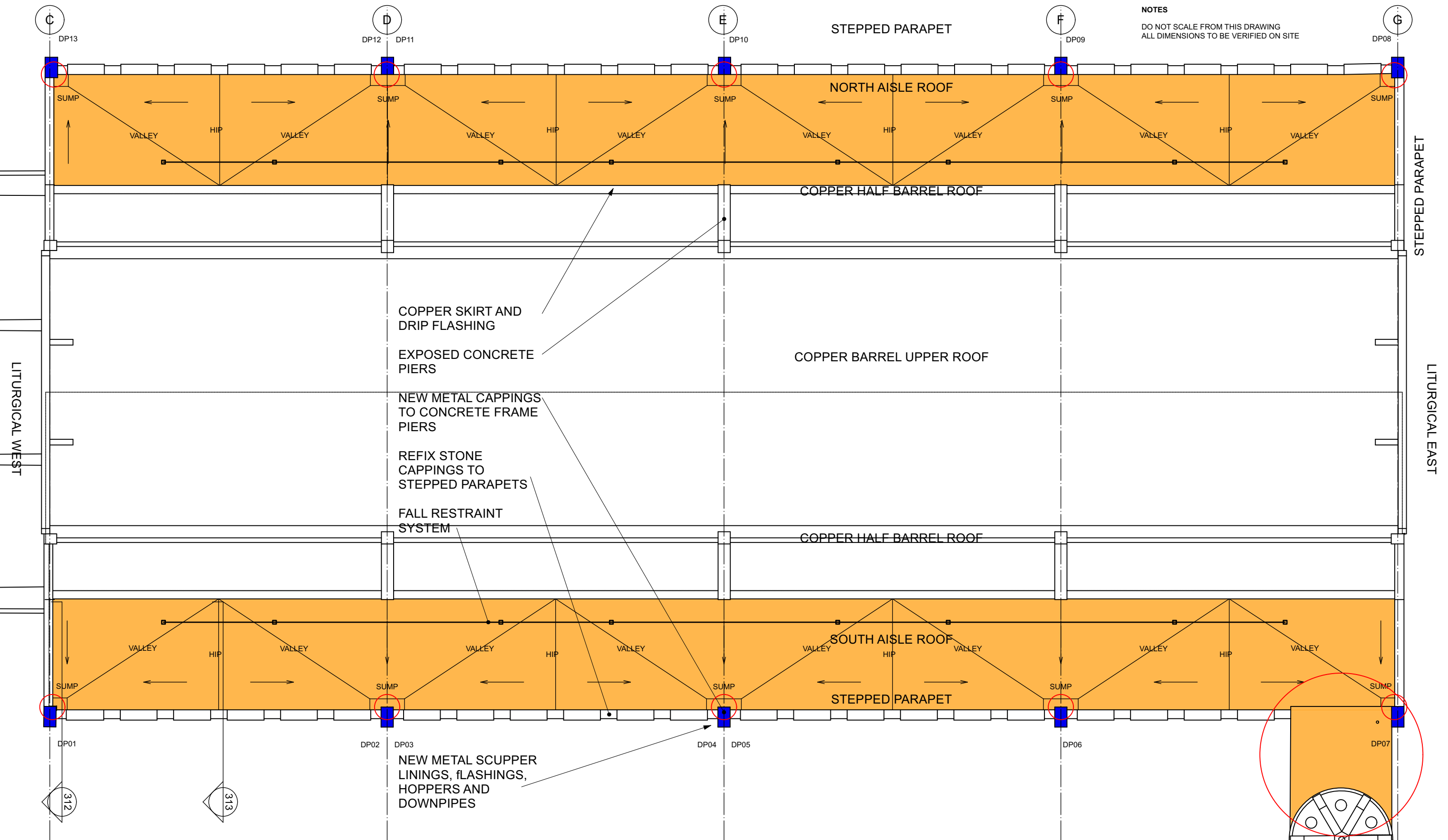
ST ANDREW AND ST GEORGE
STEVENAGE

PLAN 1:100 @ A3

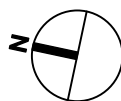
PM

115-203
REV A

AISLE ROOF REPAIRS - EXISTING PLAN



03 PLAN
ROOF



REVISIONS

A 20251127 PRELIMINARY

1 2 4 6 8m

SCALE MEASURES 8CM WHEN CORRECTLY PRINTED

ST ANDREW AND ST GEORGE
STEVENAGE

PLAN
1:100 @ A3

PM

115-213
REV A

AISLE ROOF REPAIRS - PROPOSED PLAN LAYOUT OF HIPPS AND VALLEYS

Mills Power
www.millspower.com 020 8444 1699

Architecture
10 Aumonier Mews London N2 9FA

MEASURED SURVEY INDICATES
FALL OF MAX 30MM EQUIVALENT
TO APPROX 1:95 - PONDING
EVIDENT ON SURFACE OF ROOF

CORE SAMPLE INDICATES
EXISTING ROOF SURFACE SINGLE
LAYER FELT LAID OVER ORIGINAL
MASTIC ASPHALT 20MM THICK

IF MASTIC 20MM THROUGHOUT
THEN SCREED MAY BE LAID TO
SLIGHT 1:95 FALL

PRECAST CONCRETE FRAME
WITH ORIGINAL COPPER CAPPING
MISSING

STEPPED STONE CAPPINGS TO
PARAPET

SCUPPER THROUGH PARAPET TO
COPPER DOWNPIPE
ORIGINAL TIMBER GROUNDS
CAST INTO CONCRETE FRAME

BROWN PLASTIC HOPPER AND
DOWN PIPE FIXED TO STONE
WALL PANELS

2" SCREED (FORM AND FALL
ASSUMED)

5" PRECAST HOLLOW CONCRETE
BEAM UNITS WITH
EXPOSED STONE TO U/S

FAIRFACE 9" BRICKWORK

1.5" OR 2" CAVITY

RECONSTRUCTED STONE WALL
CLADDING PANELS THICKNESS
NOT KNOWN FIXED INTO
POCKETS IN BRICKWORK AND OR
WITH METAL TABS TBC

PRECAST CONCRETE
PARABOLIC ARCH
FRAME

ASSUMED TIMBER
CONSTRUCTION

SINGLE LOCK
STANDING SEAM
COPPER ROOFING

STONE CAPPING

ASSUMED TIMBER OR
PLY FORMWORK TO
FACE OF CONCRETE
BEAM

CONCRETE BEAM

NOTES

DO NOT SCALE FROM THIS DRAWING
ALL DIMENSIONS TO BE VERIFIED ON SITE

DEMOLITIONS

REMOVE STONE PARAPET CAPPINGS AND KEEP
FOR REUSE

REMOVE COPPER AND PLASTIC HOPPERS AND
DOWNPIPES

REMOVE ADHESIVE TAPES, FELT AND MASTIC
ASHPALT

PREP UPSTANDS AND SCUPPERS TO CLEAN DRY
SURFACE

INVESTIGATION SCREED

EVALUATE MOISTURE CONTENT AND INTEGRITY
OF SCREED AND ADHESION TO CONCRETE
BEAMS BELOW - OBTAIN CONFIRMATION OF
INSTRUCTIONS BEFORE PROCEEDING

REMOVE SCREED

REMOVE ALL SCREED AND PREP BASE (TOP
SURFACE OF CONCRETE BEAMS) FOR NEW
SCREED ACCORDING TO STRUCTURAL
ENGINEER'S METHODS AND SCREED
MANUFACTURER'S RECOMMENDATIONS

INVESTIGATION TIMBER

CHECK TIMBER OR PLY FORMWORK TO
CONCRETE BEAM AT BASE OF COPPER AND IF
PRESENT EVALUATE ITS CONDITION AND
WHETHER IT CAN BE REPLACED IN THIS PHASE
OF WORKS - ASSUME 100% WILL NEED TO BE
REMOVED AND REPLACED



SCALE MEASURES 7.5CM WHEN CORRECTLY PRINTED

REVISIONS

A 20251127 PRELIMINARY

ST ANDREW AND ST GEORGE
STEVENAGE

SECTION

1:20 @ A3

PM

115-311

REV A

AISLE ROOF REPAIRS - ASSUMED EXISTING DETAIL - TO BE VERIFIED ON SITE

Mills Power
www.millspower.com 020 8444 1699

Architecture
10 Aumonier Mews London N2 9FA

VCL APPLIED DIRECTLY TO TOP OF EXISTING CONCRETE BEAMS AND WRAPPED UP VERTICAL FACE OF UPSTANDS

NEW SCREED LAID TO FALLS - SEE PLAN FOR LAYOUT 115-213

OPTION 1 INSULATED SCREED
DIATHONITE

OPTION 2 INSULATION
ACOUSTIC LAYER AND TAPERED BOARDS

WATERPROOF MEMBRANE TO ROOF AND METAL FLASHINGS TO UPSTANDS AND THROUGH SCUPPERS

NEW METAL CAPPINGS TO CONCRETE FRAME PIERS

DAMP PROOF COURSE BELOW SLATE/ STONE CAPPING

FIX METAL SCUPPER LININGS AND UPSTAND FLASHNGS DETAIL TBC

WRAP MEMBRANE ROUND TO INTERNAL FACES OF SCUPPER AND OVER SCUPPER LINING

FIX METAL HOPPERS AND DOWNPIPES DETAIL TBC

REFIX STONE CAPPINGS ON MORTAR BED AND POINT

REFIX STONE CAPPING ON DPC, MORTAR BED AND POINT

FALL RESTRAINT SYSTEM FIXED TO BEAM TBC

REPLACE TIMBER OR PLY FORMWORK TO FACE OF CONCRETE BEAM

CONCRETE BEAM

NOTES

DO NOT SCALE FROM THIS DRAWING
ALL DIMENSIONS TO BE VERIFIED ON SITE

WORKS

REPLACE PLY OR TIMBER FORMWORK BELOW COPPER DRIP AT BASE OF COPPER

INSTALL FALL RESTRAINT SYSTEM

LAY LIGHTWEIGHT INSULATING SCREED TO CREATE NEW FALLS AS MANUFACTURER'S RECOMMENDATIONS - SEE PLAN FOR LAYOUT OF HIPS AND VALLEYS 1:60 MINIMUM FALLS

RENDER REAR OF PARAPET AND THROUGH SCUPPERS WITH COMPATIBLE PRODUCT TO PROVIDE CLEAN SMOOTH SURFACE

INSTALL STAINLESS STEEL SCUPPERS AND FLASHINGS DESIGN TBC AND TERNE COATED STAINLESS STEEL SQUARE SECTION HOPPERS AND DOWNPIPES DESIGN TBC

INSTALL WATERPROOF MEMBRANE SYSTEM TO ROOF AND UPSTANDS WITH MINIMUM GUARANTEE PERIOD 25 YEARS FOR PRODUCT AND INSTALLATION

WATERPROOF MEMBRANE

LAY HEAVY DUTY POLYMER MODIFIED BITUMEN SYSTEM 2 OR 3 LAYER WITH UNDERLAYER AND CAP SHEET TO MANUFACTURER'S RECOMMENDATONS

INSTALL STONE CAPPINGS ON DAMP RPOOF COURSE MORTAR BED AND POINT

INSTALL TERNE COATED STAINLESS STEEL OR SIMILAR CAPPINGS TO CONCRETE FRAME PIERS



SCALE MEASURES 7.5CM WHEN CORRECTLY PRINTED

REVISIONS

A 20251127 PRELIMINARY

ST ANDREW AND ST GEORGE
STEVENAGE

SECTION

1:20 @ A3

PM

115-312

REV A

AISLE ROOF REPAIRS - PROPOSED DETAIL AT VALLEYS AND FALL TO SUMPS

Mills Power
www.millspower.com 020 8444 1699

Architecture
10 Aumonier Mews London N2 9FA

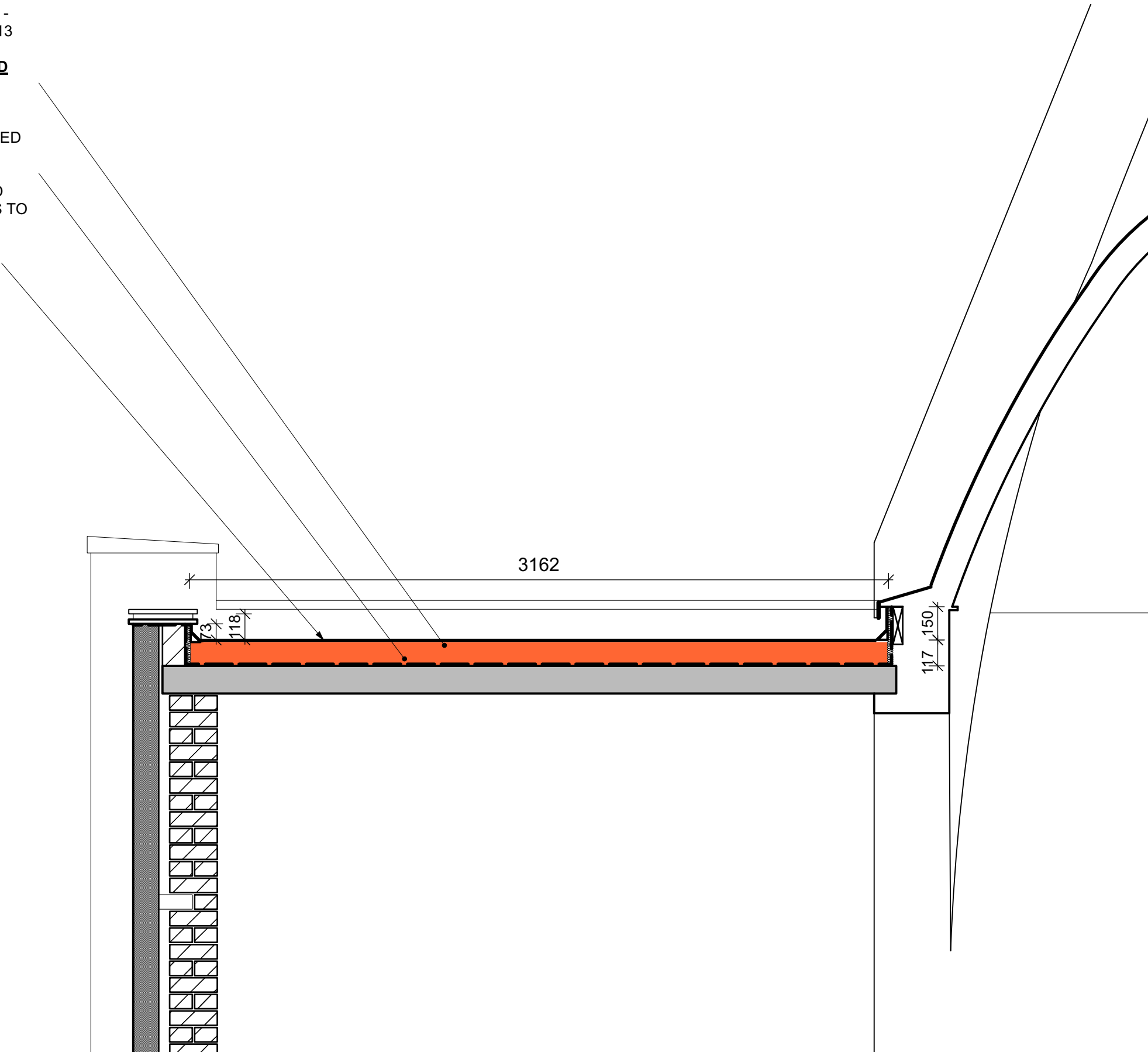
NEW SCREED LAID TO FALLS -
SEE PLAN FOR LAYOUT 115-213

OPTION 1 INSULATED SCREED
DIATHONITE

OPTION 2 INSULATION
ACOUSTIC LAYER AND TAPERED
BOARDS

WATERPROOF MEMBRANE TO
ROOF AND METAL FLASHINGS TO
UPSTANDS

NOTES
DO NOT SCALE FROM THIS DRAWING
ALL DIMENSIONS TO BE VERIFIED ON SITE

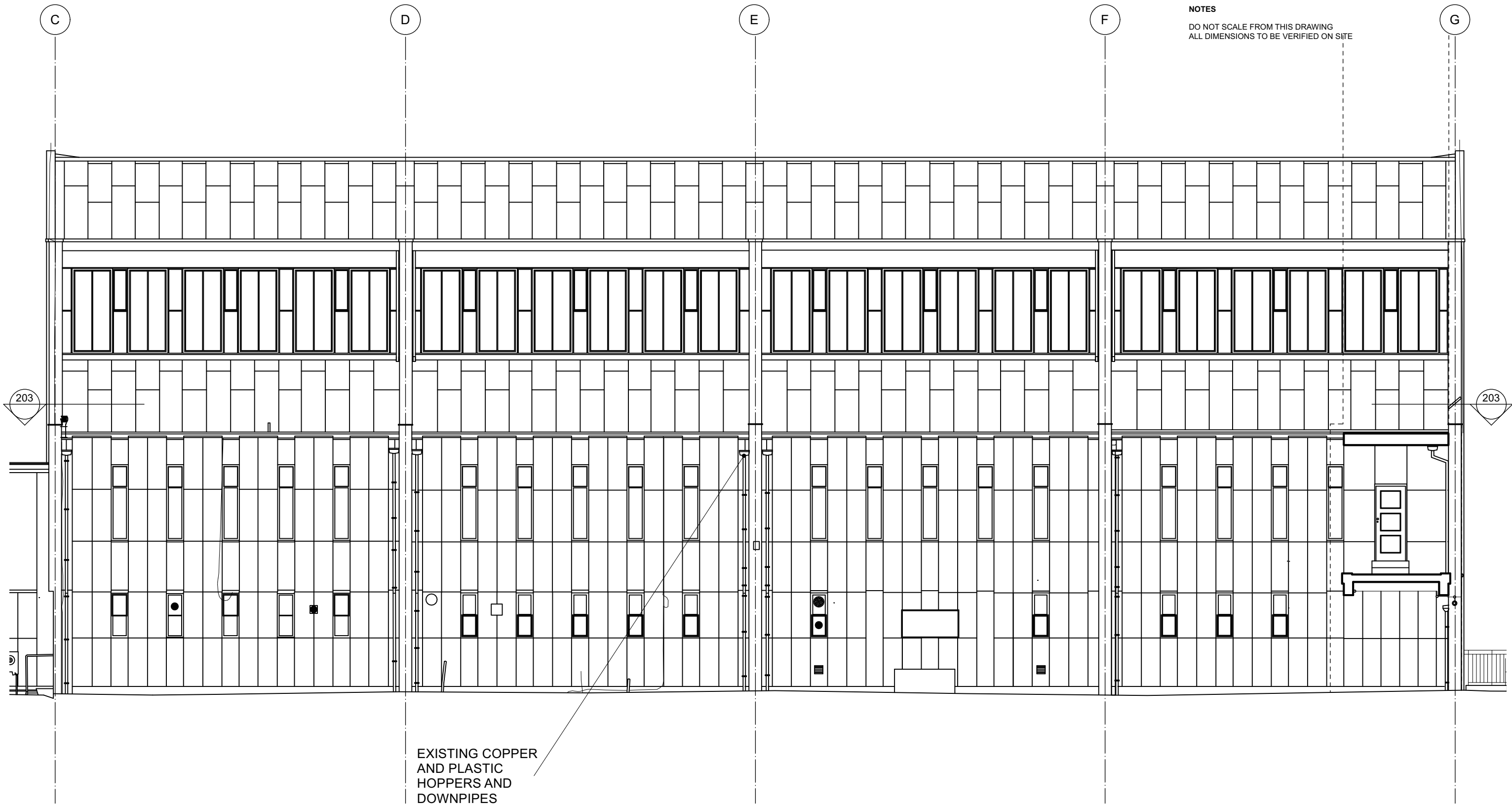


01 SECTION
TYPICAL AISLE ROOF

0.5 1 1.5m
SCALE MEASURES 7.5CM WHEN CORRECTLY PRINTED
REVISIONS
A 20251127 PRELIMINARY

ST ANDREW AND ST GEORGE
STEVENAGE
SECTION **115-313**
1:20 @ A3 PM REV A

AISLE ROOF REPAIRS - PROPOSED DETAIL AT HIPS



NOTES
DO NOT SCALE FROM THIS DRAWING
ALL DIMENSIONS TO BE VERIFIED ON SITE

EXISTING COPPER
AND PLASTIC
HOPPERS AND
DOWNPIPES

01 ELEVATION
SOUTH

REVISIONS

A 20251127 PRELIMINARY

1 2 4 6 8m

SCALE MEASURES 8CM WHEN CORRECTLY PRINTED

ST ANDREW AND ST GEORGE
STEVENAGE

ELEVATION
1:100 @ A3

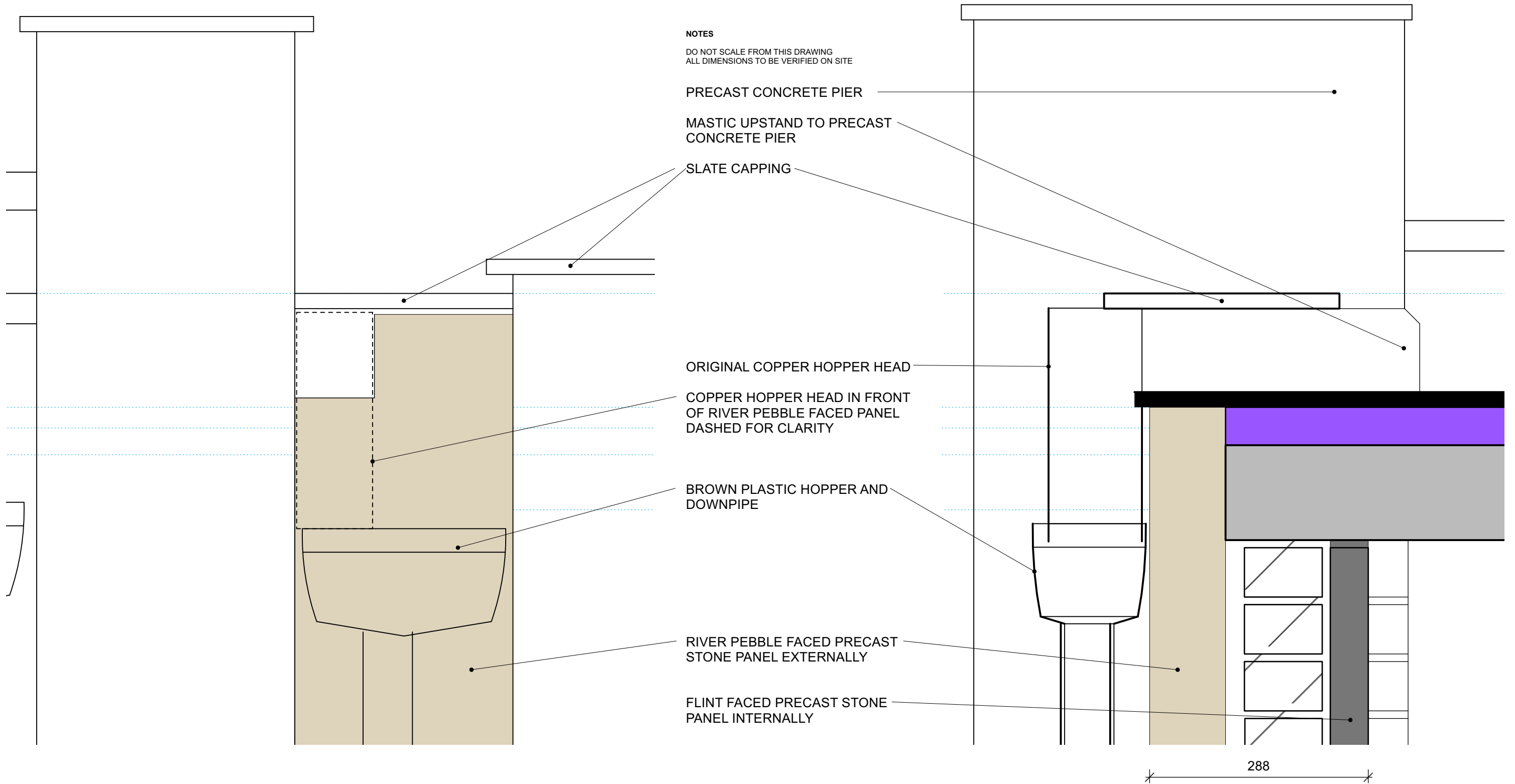
PM

115-321
REV A

AISLE ROOF REPAIRS - EXISTING SOUTH ELEVATION

Mills Power
www.millspower.com 020 8444 1699

Architecture
10 Aumonier Mews London N2 9FA



REVISIONS

| | | |
|---|----------|-------------|
| A | 20251128 | PRELIMINARY |
|---|----------|-------------|

01 SECTION
TYPICAL AISLE ROOF

02 SECTION
AT SCUPPER/ CHUTE THROUGH PARAPET

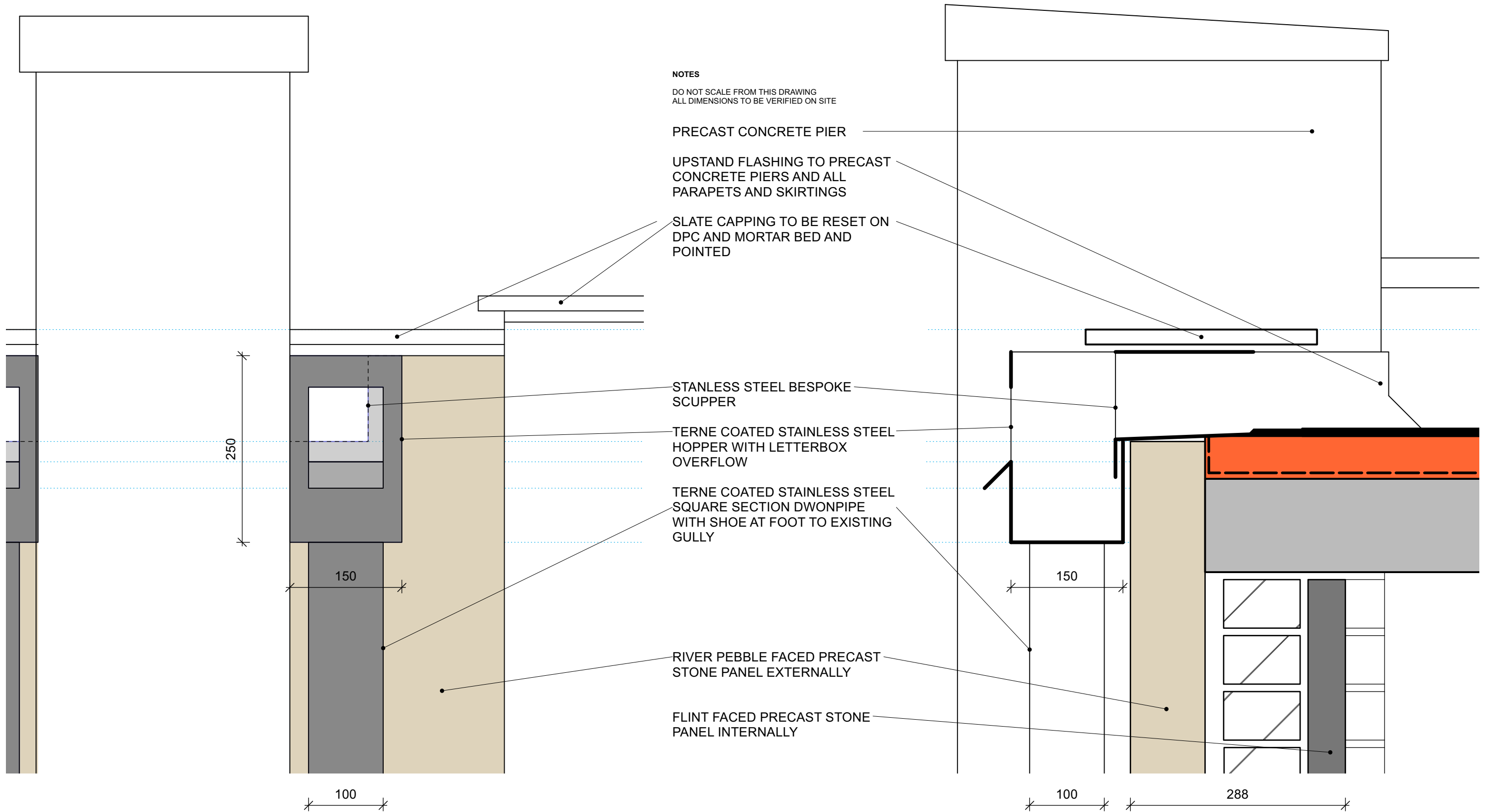
ST ANDREW AND ST GEORGE
STEVENAGE

SECTION
1:5 @ A3

PM

115-701
REV A

AISLE ROOF REPAIRS - ASSUMED EXISTING DETAIL - TO BE VERIFIED ON SITE



| REVISIONS | | |
|-----------|----------|-------------|
| A | 20251128 | PRELIMINARY |

ST ANDREW AND ST GEORGE
STEVENAGE

SECTION
1:5 @ A3

PM

115-702
REV A

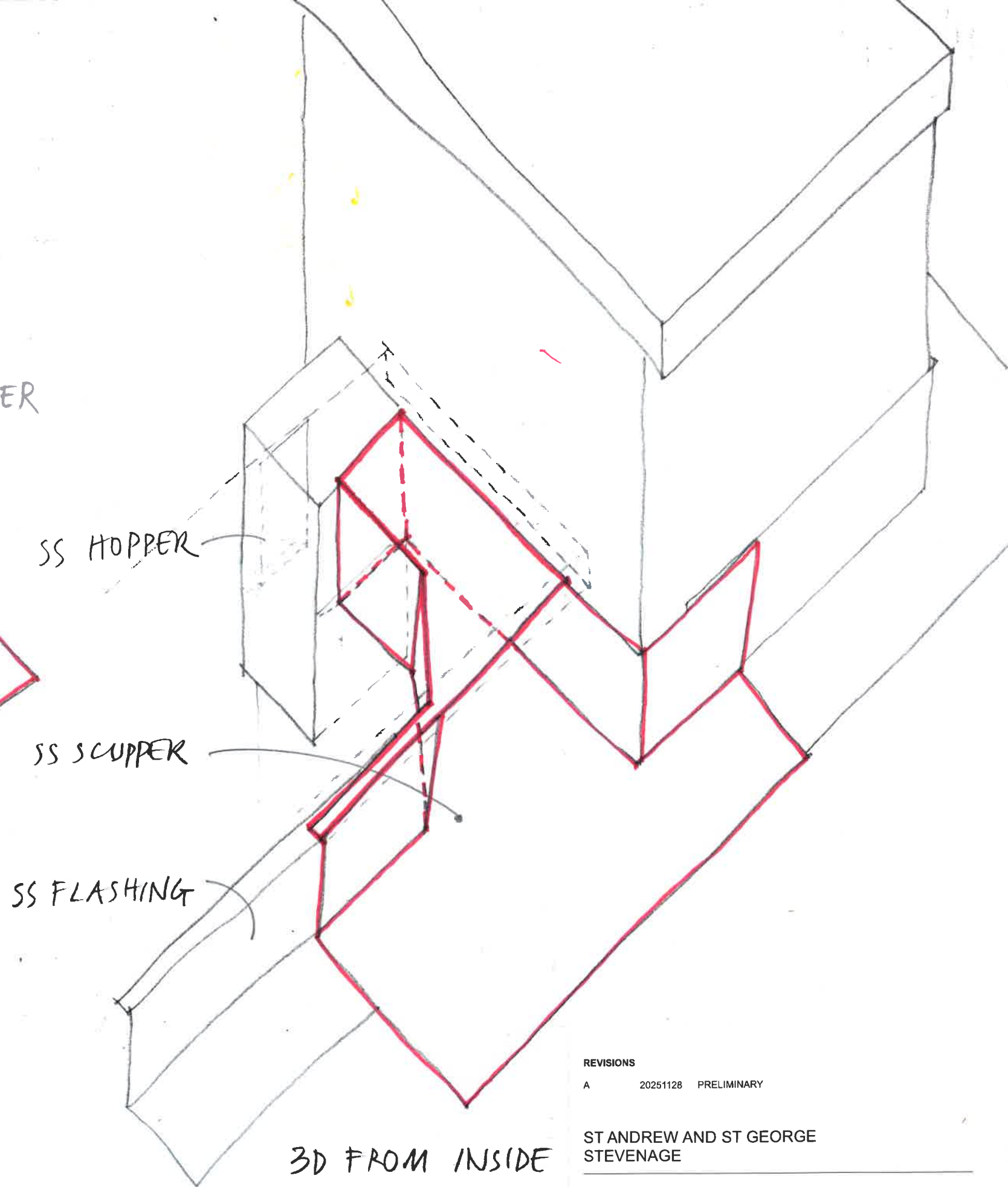
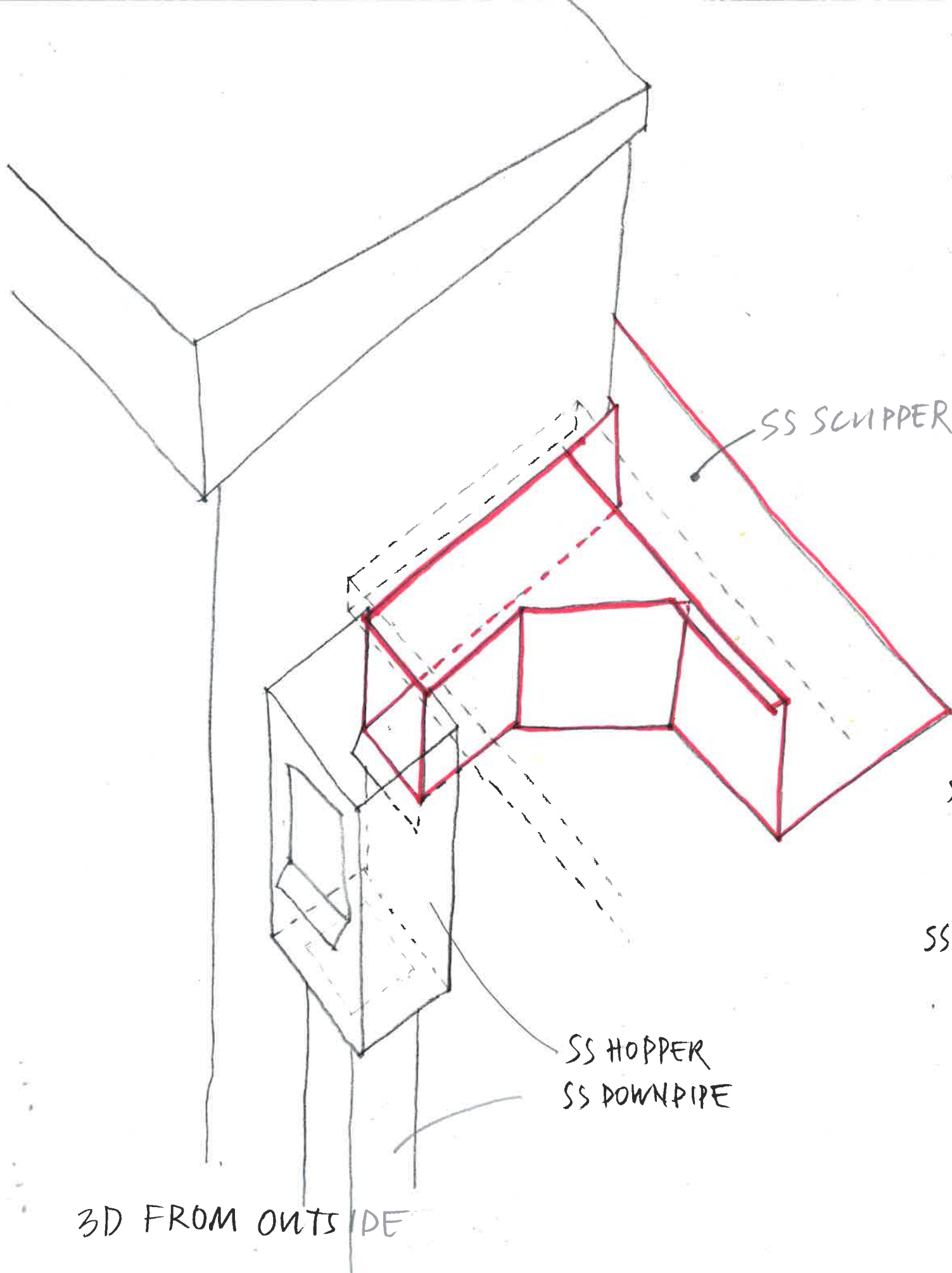
01 ELEVATION
AT RAINWATER HOPPER

02 SECTION
AT SCUPPER/ CHUTE THROUGH PARAPET

AISLE ROOF REPAIRS - PROPOSED SCUPPER AND HOPPER

Mills Power
www.millspower.com 020 8444 1699

Architecture
10 Aumonier Mews London N2 9FA



REVISIONS

A 20251128 PRELIMINARY

ST ANDREW AND ST GEORGE
STEVENAGE

SKETCH
NTS @ A3

PM

115-703
REV A