

1st February, 2026

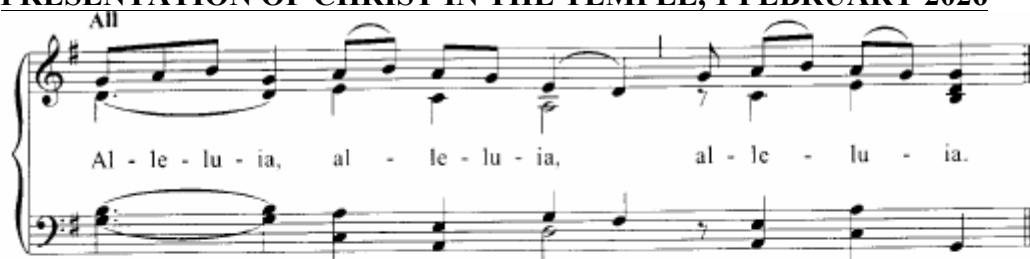
Psalm 24 - Candlemas

The image shows a musical score for Psalm 24 - Candlemas. The top system is a piano accompaniment in D major, 4/4 time, with lyrics: "Who is the king of glo - ry? It is the Lord." The bottom system is a vocal line in E major, 4/4 time, with lyrics: "Who is the king of glory? The Lord, the mighty, the valiant, The Lord the valiant in war." The score includes various musical notations such as treble and bass clefs, key signatures, time signatures, and lyrics. Chord symbols are provided below the piano accompaniment: D, G, D, C, Am7, D. The vocal line is marked with "E(i)" and "AGM".

1. O gates, lift up your heads;
grow higher, ancient doors.
Let him enter, the king of glory!
2. Who is the king of glory?
The Lord, the mightty, the valiant,
The Lord the valiant in war.
3. O gates, lift high your heads;
grow higher, ancient doors.
Let him enter, the king of glory!
4. Who is he, the king of glory?
He, the Lord of armies,
he is the king of glory.

PRESENTATION OF CHRIST IN THE TEMPLE, 1 FEBRUARY 2026

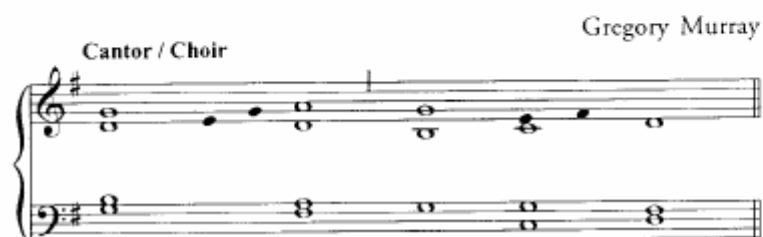
All



Al - le - lu - ia, al - le - lu - ia, al - le - lu - ia.

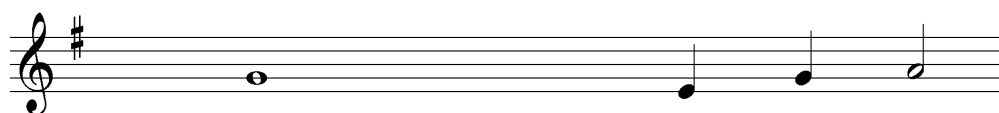
Cantor / Choir

Gregory Murray

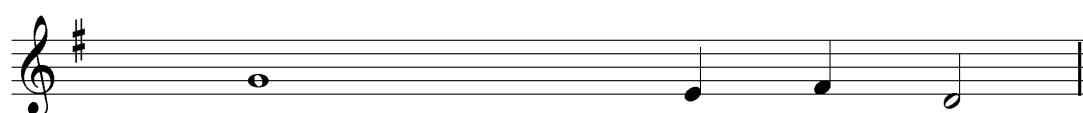


1. ORGAN INTRO
2. **CANTOR ALONE SINGS THROUGH THE WHOLE ALLELUIA ABOVE**
3. EVERYONE SINGS THE WHOLE ALLELUIA ABOVE.
4. **CANTOR SINGS THE TWO LINES AS FOLLOWS**

The light to enligh- ten the Gentiles;



And give glory to Is- rael your people.



~~OR WORDS IN SERVICE SHEET (3 Verses)~~

Today the Lord is presented in the Temple; in substance of our mortal nature. Alleluia...

Today the Blessed Virgin comes; to be purified in accordance with the law. Alleluia...

Today old Simeon proclaims Christ; as the light of the nations and the glory of Israel. Alleluia.....

5. EVERYONE SINGS THE WHOLE ALLELUIA ABOVE BETWEEN VERSES/AT THE END

8 FEBRUARY 2026

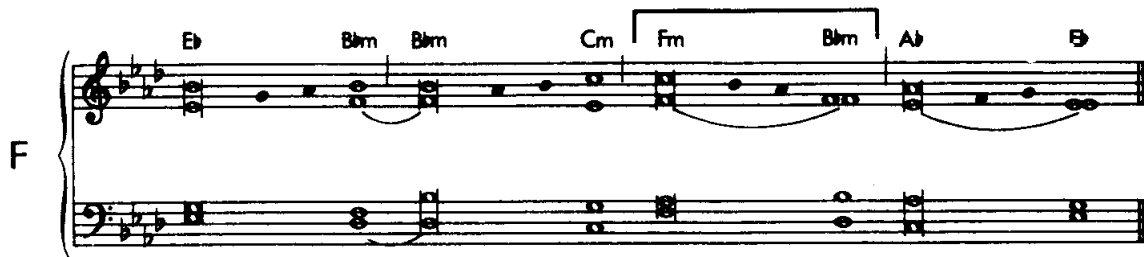
5 SUNDAY OF YEAR A

PSALM 112

The good man is a light in the dark - ness for the up - right.



Psalm Tone F



F

1. He is a light in the darkness for the upright;
he is generous, merciful and just.
The good man takes pity and lends,
he conducts his affairs with honour.
2. The just man will never waver;
he will be remembered for ever.
He has no fear of evil news;
with a firm heart he trusts in the Lord.
3. With a steadfast heart he will not fear;
Open-handed, he gives to the poor;
his justice stands firm for ever,
His head will be raised in glory.

INSTRUCTIONS FOR ALLELUIA 5 SUNDAY IN ORDINARY TIME YEAR
A – 8 FEBRUARY 2026

All Malcolm Archer

Al - le - lu - ia, al - le - lu - ia, al - le - lu - ia, al - le - lu - ia,
al - le - lu - ia, al - le - lu - ia, al - le - lu - ia, al - le - lu - ia.

1. ORGAN INTRO
2. **CANTOR ALONE SINGS THROUGH THE WHOLE ALLELUIA ABOVE**
3. EVERYONE SINGS THE WHOLE ALLELUIA ABOVE.
4. **CANTOR SINGS THE TWO LINES AS FOLLOWS:**

I am the light of the world says the Lord;

Anyone who follows me will have the light of life.

5. EVERYONE SINGS THE WHOLE ALLELUIA ABOVE.

15 February 2026

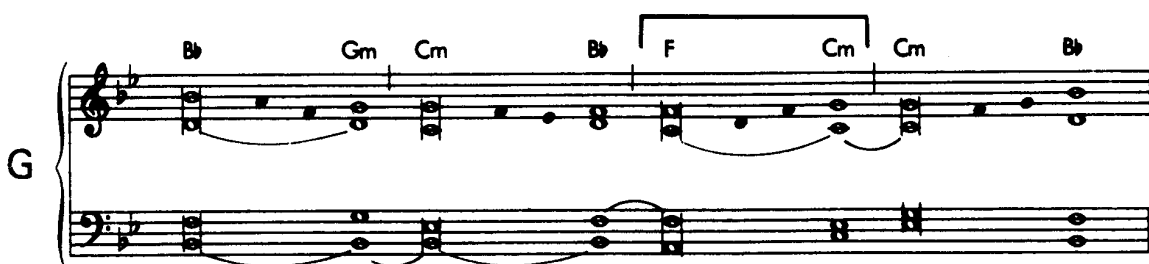
6 SUNDAY OF YEAR A

PSALM 119

They are hap-py who fol-low God's law.



Psalm Tone G



G

1. They are happy whose life is blameless,
who follow God's law!
They are happy those who do his will,
seeking him with all their hearts.
2. You have laid down your precepts
to be obeyed with care.
May my footsteps be firm
to obey your statutes.
3. Bless your servant and I shall live
and obey your word.
Open my eyes that I may consider
the wonders of your law.
4. Teach me the demands of your statutes
and I will keep them to the end.
Train me to observe your law,
to keep it with my heart.

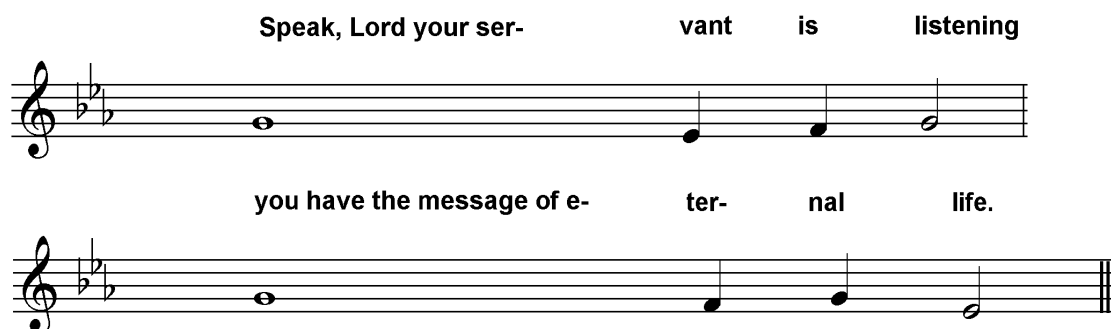
INSTRUCTIONS FOR ALLELUIA 6 SUNDAY IN ORDINARY TIME YEAR
A – 15 FEBRUARY 2026

All Malcolm Archer



1. ORGAN INTRO
2. **CANTOR ALONE SINGS THROUGH THE WHOLE ALLELUIA ABOVE**
3. EVERYONE SINGS THE WHOLE ALLELUIA ABOVE.
4. **CANTOR SINGS THE TWO LINES AS FOLLOWS:**

Speak, Lord your ser- vant is listening



you have the message of e- ter- nal life.

5. EVERYONE SINGS THE WHOLE ALLELUIA ABOVE.

22 February 2026

Psalm 51

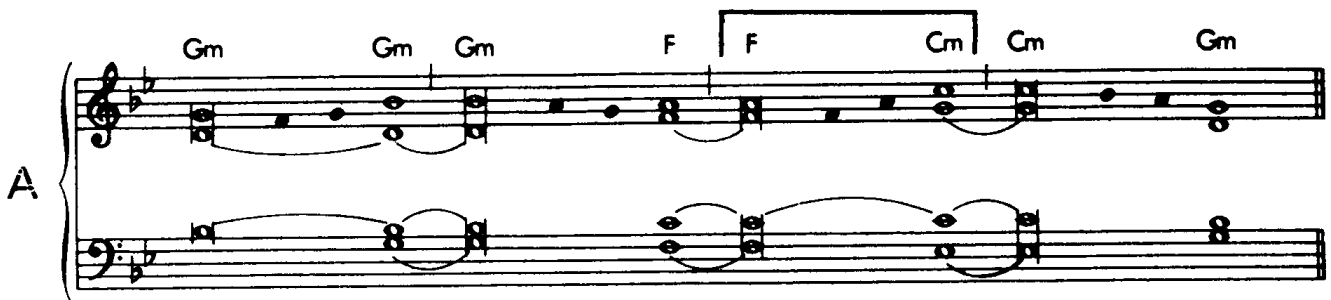
Ash Wednesday Years A,B,C

1st Sunday in Lent Year A

Have mer-cy on us, Lord, for we have sinned.



Psalm Tone A



1. Have mercy on me, God, in your kindness.
In your compassion blot out my offence.
O wash me more and more from my guilt
and cleanse me from my sin.
2. My offences truly I know them;
my sin is always before me.
Against you, you alone, have I sinned;
what is evil in your sight I have done.
3. A pure heart create for me, O God,
put a steadfast spirit within me.
Do not cast me away from your presence,
nor deprive me of your holy spirit.
4. Give me again the joy of your help;
with a spirit of fervour sustain me,
O Lord, open my lips
and my mouth shall declare your praise.

INSTRUCTIONS FOR ACCLAMATION 1ST SUNDAY OF LENT
22 FEBRUARY 2026

From Ash Wednesday to Maundy Thursday

Andrew Moore

All



Praise to you, O Christ, King of e - ter - nal glo - ry.

The first line of musical notation is in 4/4 time, key of D major. It features a treble and bass staff. The melody is in the treble staff, starting on D4, moving up stepwise to G4, then down to F#4, E4, D4, C#4, B3, A3, G3. The bass staff provides a simple accompaniment, starting on D3, moving up stepwise to G3, then down to F#3, E3, D3, C#3, B2, A2, G2.

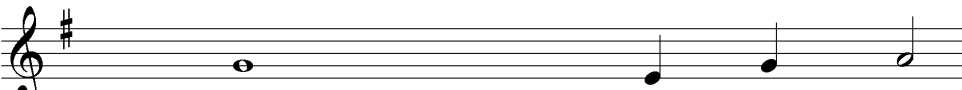


Praise to you, O Christ, King of e - ter - nal glo - ry!

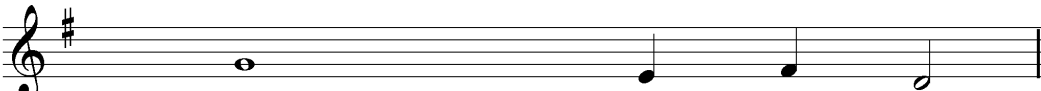
The second line of musical notation continues the melody from the first line. The treble staff melody starts on G3, moving up stepwise to A3, B3, C#4, D4, E4, F#4, G4, then down to F#4, E4, D4, C#4, B3, A3, G3. The bass staff accompaniment continues the same pattern as the first line.

1. ORGAN INTRO
2. **CANTOR ALONE SINGS THROUGH THE WHOLE RESPONSE ABOVE**
3. EVERYONE SINGS THE WHOLE RESPONSE ABOVE.
4. **CANTOR SINGS THE TWO LINES AS FOLLOWS:**

Man does not live on bread a- lone;



but on every word that comes from the mouth of God.



The cantorial response consists of two lines of musical notation in 4/4 time, key of D major. The first line melody starts on D4, moving up stepwise to G4, then down to F#4, E4, D4, C#4, B3, A3, G3. The second line melody starts on G3, moving up stepwise to A3, B3, C#4, D4, E4, F#4, G4, then down to F#4, E4, D4, C#4, B3, A3, G3. Both lines have a simple bass staff accompaniment.

5. EVERYONE SINGS THE WHOLE RESPONSE ABOVE.