

A vertical stained glass window with various colored panes (yellow, orange, blue, red) and leaded glass patterns. Warm, golden light streams through the window from the left, creating a soft glow and lens flare effects across the entire image.

IGHTHAM MAGAZINE

**DECEMBER &
JANUARY 2026**

**PUBLISHED FOR THE COMMUNITY
BY ST PETER'S CHURCH**



Services in the Benefice in November 2025

Ightham

Wrotham

Sun 7 Dec	9am	Breakfast@Church Christingle	10.30am Holy Communion
	6pm	Evensong	
Sun 14th Dec	10am	Holy Communion	9am Breakfast@Church 10.30am Service of the Word
Weds 17th Dec	7pm	Carols in the Square	
Sun 21st Dec	10am	Service of the Word	10.30am Holy Communion
	4pm	Carols by Candlelight	6.30pm Carol Service
CHRISTMAS EVE	3pm	Nativity service	4pm Crib service
	11.30pm	Midnight Communion	5.15pm Carols in the Square
CHRISTMAS DAY	10am	All-age Worship Celebration	11pm Midnight Communion
	10.45am	Short Holy Communion	10am Christmas Family Service
Sun 28th Dec	10am	Holy Communion	No Breakfast@ Church
			10.30am Matins
Sun 4th Jan	9am	Breakfast@Church	10.30am Holy Communion
	6pm	Evensong	
Sun 11th Jan	10am	Holy Communion	9am Breakfast@Church 10.30am Service of the Word
Sun 18th Jan	10am	Service of the Word	10.30am Holy Communion
	6pm	Evensong	
Sun 25th Jan	10am	Holy Communion	9am Breakfast@Church 10.30am Sung Matins

Wednesday services

3rd December	10am	Morning Prayer
10th December	10am	Holy Communion
17th December	10am	Morning Prayer
24th December	No service	
31st December	10am	Morning Prayer
7th January	10am	Holy Communion
14th January	10am	Morning Prayer
21st January	10am	Holy Communion
28th January	10am	Morning Prayer



When they saw the star, they rejoiced with exceeding great joy.

Matthew 2:10



Penny for your thoughts...

Another year is almost over! Is this a time to rejoice, to be relieved, to rue the year's passing, or to be eagerly anticipatory for the New Year?

Or just to be thankful that phew, we've made it to the year's end? In truth, it's perhaps a cocktail of all these emotions as a year these days is definitely a reflection of "life's rich tapestry", as the saying goes. There is though a joyful constant, and that's the value of a vibrant, supportive and caring community. Preparing the Magazine each month, this is an intangible value which always seems to shout out loud. Perhaps it's because I now live outside the village, so notice this more obviously but it never ceases

to amaze me at how many events we feature, at how busy the Parish Council is when reading their Minutes, at what a wonderfully stimulating education our local school provides, and how brilliant our church is when despite the lack of an incumbent, they manfully soldier on caring and supporting the parish and the wider Benefice. So can I offer a huge personal thanks to the Magazine team, and a wider season's greeting on behalf of that brilliant team to all our regular subscribers and to those occasional readers who will have received their complementary Magazine through the dedication of our expanded delivery team who dash hither and thither across the parish popping a bumper magazine through everyone's letterbox! Happy Christmas and best wishes for the New Year!

Penny Cracknell

CONTACTS

The Benefice of Ightham and Wrotham THE PARISH OF ST PETER'S, IGHTHAM

Registered Charity No. 1136162

Rector:	Parish in vacancy	
Church Warden:	Naomi Webster	T: 07421 832919
	E: churchwardens@ighthamchurch.org.uk	
Benefice Administrator:	Jane	T: 07940 547310
	E: admin@ighthamchurch.org.uk	

IGHTHAM MAGAZINE

Editorial:	Penny Cracknell	T: 07811 066253
	E: cracknellpa@gmail.com	
Advertising:	E: stpetersadverts@btinternet.com	
Subscription:	E: magazine@ighthamchurch.org.uk	

Copy deadline for the Feb edition is 15th Jan

MEDITATE

And there were shepherds...

In his gospel, Luke tells how the shepherds in the fields were keeping watch over their flocks when they were terrified by the sudden arrival of heavenly angels, surrounded by the glory of the Lord. And the message of the angel that night has rung down the centuries:

"I bring you good news that will cause great joy for all the people. Today in the town of David a Saviour has been born to you; he is the Messiah, the Lord. This will be a sign to you: You will find a baby wrapped in cloths and lying in a manger." (Luke 2:10,11)

And so, the first people to greet the Saviour were not rich VIPs, but humble shepherds. And in turn, it was the shepherds who became the first evangelists: for they would have gone home to their families and neighbours that night with the amazing news of what they had seen.

Meanwhile, for Mary there followed a time of reflection. She gathered up in her mind all her impressions, and all that the shepherds had shared about the angelic visit. She knew it was treasure, and not to be squandered. Then she quietly pondered in her heart the meaning and significance of all that had happened, so that she would never forget.

Exuberant witness and quiet contemplation are not opposites. They are, in fact, good companions in the spiritual life!

So, this Christmas, let's be filled with the joy that the Saviour has also been born

'to us'. May our lives reflect the glory of His coming, even in a small way. May our interactions with friends, colleagues and families during this Advent season reflect the great joy that the angels brought that night, so long ago.

THE MEANING OF ADVENT CANDLES

Advent is the season of pausing and waiting for an exciting arrival! The lighting each week of the next Advent candle is a wonderful marker as we tiptoe towards Christmas. What though does each coloured candle represent?

The first candle lit on Advent Sunday is purple and is often in honour of 'The Patriarchs', remembering Abraham and David. The second purple candle is for 'The Prophets', as we reflect on the way Jesus' birth was 'foretold'. Prophecy is the theme for the final third purple candle for St John, and his wonderfully familiar opening Gospel words. Pink, in week 4, remembers Mary, Mother of God.

Our Advent wait is over when the final white candle is lit on Christmas Day in joyful celebration of Jesus, as the Light of the World. Christmas morning will now sparkle in the glorious glow of all five candles!



PLAXTOL LOCAL HISTORY GROUP

Pocahontas & Gravesend – Jenny Watson-Bore

Pocahontas, born c 1595, was England's first American visitor and popularly known as 'La Belle Sauvage'. Her short life, marriage and visit to England is well recorded in statues and paintings. She was the favourite daughter of a powerful chief of a Native American group, the Powhatans. Her name means the playful one.

In the legend Captain John Smith colonised Virginia in 1607 and called the new territory after Queen Elizabeth I, 'the Virgin Queen'. He was the first person to map Virginia and his statue at St Mary-Le-Bow, Cheapside, shows him map in hand. Pocahontas helped the starving settlers, met and befriended John Smith and saved his life by laying down her head next to his as he was about to be executed. In 1613, aged 18, she was captured by Captain Argall for ransom and spent a year on his ship in captivity. It was there she converted to Christianity, received the name Rebecca and met John Rolfe, a tobacco planter from Norfolk whom she married in 1614. Our speaker showed us Breukner's painting of their marriage, now in Albany USA. In 1616 they travelled to England, a six week journey, landing at Plymouth and visited London and Norfolk with their young son Thomas. Pocahontas could not cope with the

'noxious' air of London and stayed at Syon House, Brentford.

Being a Princess, she had an audience with James I and the royal family. The National Gallery holds a portrait of her at this time, wearing a red Jacobean dress. Queen Anne had a statue sculpted of her in 1712 which is at the foot of the steps by the West front of St Paul's Cathedral. A year later they set sail for Virginia, but Pocahontas was gravely ill and died soon after leaving Gravesend aged only 22. She is buried at Gravesend's St George's Church where there is a life size statue of her wearing a racoon dress and a feather in her hair. Her son Thomas was educated by his uncle, married and is buried in Virginia. This was a lively and entertaining talk about the 400 year old legend of this remarkable young woman, who still captures our imagination.

Next meeting: Tuesday 9th December, PLAXTOL PARISH CHURCH at 8pm. Historian, writer and speaker Melanie Backe-Hanson will launch our Plaxtol House History Project with 'Discovering the Secrets Behind Your Front Door'.

For information visit

plaxtollocalhistory.wordpress.com

V.Dusseck



SEVENOAKS

Plumbing & Heating



PLUMBING
BATHROOMS
CENTRAL HEATING

REPAIRS
MAINTENANCE
EMERGENCY CALL OUT

07710 606080
WWW.SEVENOAKSPLUMBINGANDHEATING.CO.UK



**A reliable
electrical company
in your area.**

01959 523054



- No job too small
- All work is guaranteed.
- Competitive free estimate
- Highly-trained, competent, and fully-qualified.



17 Ashen Grove Rd, East Hill,
Otford, Sevenoaks, Kent TN15 6YE.
Email: Office@EastonElectrical.co.uk

Proud members of
Checkatrade.com
Where reputation matters



The Original Tree Surgeons Ltd

Tree Care Specialists

Domestic & Commercial Tree Care

Tree Felling • Thinning • Hedge Trimming & Pruning
Dead Wooding • Reduction • Crown Lifting • Safety Pruning
Tree & Stump Removal • Cable Bracing

0800 145 5262 • office@otskent.co.uk
www.otskent.co.uk

Dear Friends and Parishioners,

As we approach the season of Advent and Christmas, we are reminded once again of the light that shines in the darkness—a message that feels especially poignant in today's world. With global challenges, personal struggles, and the pace of modern life, the story of Christ's birth offers us a moment to pause, reflect, and reconnect with hope, peace, and community.

This year, our parish invites you to join us in celebrating the true meaning of Christmas. Whether you are a regular churchgoer or simply seeking a quiet space to reflect, our doors are open to all. We warmly welcome you to our festive services, including:

- Christingle @ breakfast Church 9.00a.m on 7 December
- Carol Services at 4p.m Ightham or 6.30 Wrotham on 21 December
- Crib Service @ Ightham at 3p.m and Wrotham @ 4p.m on 24 December
- Christmas Eve Midnight Communion 11.00 Wrotham and 11.30 Ightham
- Christmas Day Family Service – 10am Ightham and 10.30 Wrotham

In a world that often feels divided, Christmas reminds us of unity, compassion, and the joy of giving.

We encourage everyone to reach out to neighbours, share kindness, and perhaps even invite someone to join you at a service. Let's make this season not just about celebration, but about connection.

Our churches in Ightham and Wrotham will also be collecting donations for local food banks and charities—small acts that make a big difference.

May the peace of Christ fill your hearts and homes this Christmas. We look forward to celebrating with you and walking together into the New Year with faith and hope.

With blessings,



Michelle Lawson

IGHTHAM IGHTHAMS

On Saturday 13th December and 10th January we will have our monthly Men's Breakfast at the George and Dragon in Ightham, at 8.30 am. This continues our monthly visits which have taken place for over 15 years. We enjoy an excellent full English breakfast on the second Saturday of the month.

We will be very pleased if any newcomers would like to join us for some good conversation over a leisurely breakfast in lovely surroundings. If you would like to join us and / or would like to have a regular reminder, please can you let me, John Webster, know via email: jnhjk.webster@btinternet.com; or phone: 01732 884819.



ST PETER'S COMMUNITY COFFEE SHOP

We offer a warm welcome, good company, delicious food and drink. Cash or cards accepted!

Toys are available for younger visitors to play with.

We need a helper and or baker for the 4th Wednesday of the month and

I would love to hear from anyone who would be happy to come and help us.

Please contact Jenny Webster - jnhjk.webster@btinternet.com 01732 884819 07752463238



On Wednesday 10th December at 11 am.

Do come and join us to enjoy coffee and homemade cake whilst being entertained by Ightham School Choir



**10.15am
to 11.45 am
every
Wednesday**

**Church
Centre**

*The charity for December is **St Mungo's** a charity supporting over 3,150 homeless people every night. The charity for January will be **Spadework** at Offham which sows the seeds of opportunity for adults with learning and other disabilities. 50% of our takings are given to our nominated charity and 50% to St Peter's Church.*

As is our custom there will be **NO** Coffee Shop on Wednesday 24th December or Wednesday 31st December. We look forward to seeing you again on Wednesday 7th January 2026.

MORE IGHTHAM IGHTHAMS

Interregnum Help

Any questions or offers of help during the vacancy, please contact Jane admin@ighthamchurch.org.uk or Naomi churchwardens@ighthamchurch.org.uk For further information, please see the Benefice News elsewhere in the Magazine.

Welcome to Ightham Booklet

New to the village? Please contact the Parish Administrator for the latest edition of this useful booklet. E:

admin@ighthamchurch.org.uk



Ightham Magazine

Subscribe to the Ightham Magazine and keep up to date with local news and events; read the latest Parish Council deliberations; and find contacts for local trades. The annual subscription is £10, for 10 issues delivered free to your door. Payment can be made by standing order, cheque or cash. To subscribe, please contact E: magazine@ighthamchurch.org.uk

St Peter's Church Parent, Baby & Toddler Group

New to Ightham? New mum at home? New child carer?



**Thursday
10 - 11.30 am
(term time only)
in St Peter's
Church**

From napping newborns to toddlers on trikes, this friendly and welcoming group would love to see you! Come along to meet local Mums and carers over coffee/tea, and yummy home-baked cake.

Need to know more?

The Group's leader, Kirsty Mitchem, will be delighted to hear from you. T: 01732 885072.

ARBORICULTURAL & LANDSCAPE CONTRACTORS

All aspects of domestic & commercial tree surgery

Woodland management & site clearance

Firewood sales & woodchip production for biomass

Fencing supplied and erected

Hard landscaping and groundworks



RWE

www.rwers.co.uk **RURAL SERVICES**

T: 01732 746 281

E: office@rwers.co.uk

HALF YEAR TENNIS CLUB MEMBERSHIP NOW AVAILABLE

£55 adult: Sept-March

- other memberships also available

2 Courts • All-weather Tiger Turf
Surface • Floodlights
Ball Machine • Club Coach
Club Sessions • Club Teams
Tournaments • Cardio Tennis



Visit our website for more
information



**FRIENDLY CLUB FOR
ADULTS, FAMILIES
& JUNIORS**

THE CHILDREN'S SOCIETY

The Children's Society started its Good Childhood Research 20 years ago focussing on children's wellbeing. Sadly, the October 2025 report shows that children's wellbeing is still in decline and too many youngsters feel alone while worries keep piling up. Full details of the report can be found at <https://www.childrenssociety.org.uk/good-childhood>

The Society works both through local exemplary projects to improve their wellbeing and through policy work influencing government. A key emerging theme, and one which influences the Society's policy recommendations is "Reclaiming hope in a changing world".

Hope is important to children and young people's sense of wellbeing, and yet not all young people are hopeful that their voices matter. The solutions shared by both young people and professionals are integral to the development of policy recommendations. The report highlights the importance of sustaining young people's hope for their future aspirations and empowering them so they can engage in making their own future, and that of wider society, better.

Interestingly, one of the things professionals raised many times was that "It takes a village to raise a child" - this was because children felt a loss of a sense of community and with it a loss of collective responsibility for children's wellbeing. This contributed to young people experiencing low wellbeing in the first place - and this made it more difficult to address the issues that could lead to low wellbeing. Our Christingle this year will be celebrated at Breakfast@Church on December 7th and the collection from our Carol Service at 4pm on December 21st will be for the Children's Society.

You can also donate through their website at www.childrenssociety.org.uk

**The
Children's
Society**

AU REVOIR AND THANK YOU

Dear Neighbours and Friends,
It has been an absolute joy to have had the privilege to have cared for and lived at Ightham Mote for the past 30 years.

However, as a new year dawns, it is time to move on. I wanted to say an enormous thanks to the wonderful community that is Ightham and beyond, for all the tremendous support, encouragement and camaraderie across this time, both for the property and the fabulous team of staff and volunteers here, as well as personally.

We have made so many lovely friends and will miss this beautiful and extraordinarily special place. I take heart from its survival across 700 years and know that with the love and attention it merits, Ightham Mote will continue to go from strength to strength. I hope we have played some small part in securing its future, especially respecting the memory of Charles Henry Robinson in this the 40th year since his gift, of Mr Goodwin, who gave the estate in 1977, and of Dorothy Smith who lived, worked and volunteered here for 70 years. The Lake District beckons for Ron, me and Milo but we hope to see very many of you before January 4th for our special "Timeless Christmas" offer and to keep in touch with lots of folk.

With best wishes for a Happy Christmas and wonderful New Year.

Bernadette

**Bernadette Gillow, General
Manager, Ightham Mote & North
Kent Portfolio**





EKW LEGACY PLANNING **Local Will Writing Service**



IS YOUR WILL UP TO DATE?
IS IT AFFECTED BY THE NEW IHT RULES?

**A NEW WILL CAN SAVE INHERITANCE TAX AND PROTECT YOUR PROPERTY
AND SAVINGS IF YOU GO INTO LONG TERM CARE**

For a free Will review and help with all types of Wills, Transfers to Tenants in Common,
Children's Trusts, **Lasting Powers of Attorney** etc

Call our local specialist Tony Nunn on 01732 369294 for a FREE consultation
or Freephone 0800 1698038

www.ekwlegacyplanning.co.uk email: willplanning@gmail.com



PEEK LANDSCAPING

Driveways, Paths, Patios, Walling, Drainage, Fencing/gates, Turfing, Planting
Garden Clearance. All work carried out to the highest standard, customer
references available on request. Fully Insured.

For free advice and quotations, contact Brooke Peek on: M 07494 538522
E: brooke_peek@hotmail.co.uk

GURKHA CLEANING & LAUNDRY SERVICE

Domestic & Commercial Cleaning

Door to Door Laundry & Dry Cleaning Service

Carpet Cleaning

9 Orchard Place Business Centre, TN15 8XQ

T: 01732 885511

E: info@gcals.co.uk

The Birkbeck Chiropody & Podiatry Practice

Health Professions Council (HPC) Registered Podiatrists

Open Monday to Saturday Day and Evening Appointments
Treatments by appointment only Easy Car Parking

To Book an Appointment Please Call

01732 883271

Woodlands, 172 Maidstone Road, Borough Green, Sevenoaks TN15 8JD
T | 01732 883271 W | birkbeckpodiatry.com

DECEMBER & JANUARY – the old and the new!

- It's Christmas in the Land of Oz at Hever Castle until 2 January.
- If your New Year proposal has been accepted . . . go to the Hever Castle Wedding Showcase, 8 February, noon – 1500. Pre-register now!
- Aladdin is The Stag's Xmas Panto. Take the family for this annual romp!
- Enjoy a novel Plant an Orchard Volunteer Day at Bore Place, 10 January 10 am – 230 pm including lunch.
- Looking for a unique gift? Annual membership at Great Comp is perfect for fresh air, garden inspiration and above all fun!
- Blow away those cobwebs with a Boxing Day & New Year's Day guided estate walk at NT Ightham Mote. Booking essential.
- A New Year resolution? Volunteer at Chiddingstone Castle!
- Penshurst Place has just the ticket for a mini panto. The First N.O.E.L, 6 – 23 December includes a quiet SEN performance.
- If you just need to curl up with a good book and chill, find inspiration at Sevenoaks Bookshop.

Check websites for full booking and ticket details.

All book worms should head to Borough Green and Sevenoaks Libraries where they'll find a cornucopia of literary delights, including children's activities! Check the Kent Library service website <https://www.kent.gov.uk/leisure-and-community/libraries> or call T: 03000 41 31 31 for opening hours and up to date information.



Ramblers - December/January 2026

Stroll or stride . . .

with our friendly group of Kent Ramblers, part of the national Ramblers walking organisation.

You don't have to be a Ramblers' member to sample a few walks to help you decide if you'd like to join. If you're new, we suggest contacting the walk leader beforehand to check their walk's suitability.

Blow away the Christmas cobwebs and celebrate the New Year with an energetic ramble!

Full details can be found on [Upcoming Walks](#) link or [Facebook page](#)

or E: info@tonbridgeandmallingeramblers.org.uk



We look forward to welcoming you!



WROTHAM COMPUTER CARE LIMITED

Friendly, local IT support for Home & Business users of
PC's & Apple Mac's

Software & Hardware repairs or installation

Install Broadband, Wired or Wireless Networks

Virus & Spyware removal

Tel: 01732 780176



WELHAM JONES

An independent family owned company

Funeral Directors & Monumental Masons

Borough Green, Ightham, Wrotham & West Malling

01732 780600

43 Western Road, Borough Green, TN15 8AL
email: boroughgreen@welhamjones.co.uk

www.welhamjones.co.uk



24 hour
service

Pre - paid funeral
plans available



IGHTHAM WI

Despite the first dark Autumn evening and numerous apologies due to illnesses, holidays and so forth, the Village Hall was again full with enthusiastic members, together with those on Zoom. After the usual reports and numerous social activities, the President introduced our speaker Amanda Everest who was going to entice us to make our own sourdough bread. Amanda unfortunately couldn't demonstrate live how to make it as it can take a few days to mature. However, she brought with her a large tub of "starter" (fermented flour) which is the basis of the bread making and which can be quite tricky to make. Many members took a little starter pot home with detailed instructions and were told to be patient, as the finished product was well worth the effort. We were all amazed to see how easy it was to make your own



butter!! Simply use 600ml of double cream (room temperature) and whizz it in a mixer. Needless to say, everyone enjoyed the free samples.

New members and visitors are always welcome. Any enquiries, please contact Helen Johnson, President, Ightham WI.

E: happyflowers@live.co.uk

Future meetings: December: Party time! January: Claudia Goodman talking about Autism.



Wishing Everyone A Wonderful Christmas

&

A Happy and Healthy New Year

Opening hours

Xmas Eve	9am – 1pm
Xmas Day	CLOSED
Boxing Day	CLOSED
Saturday 27 th	9am – 1pm
Sunday 28 th	CLOSED
Monday 29 th	9am – 1pm
Tuesday 30 th	9am – 1pm
Wednesday 31 st Dec....	9am – 1pm
Thursday 1 st Jan. CLOSED	
Friday 2nd Jan..	9am – 5pm



LJ Travel

Dream - Explore - Discover

Best Wishes
Lisa, Jayne,
Karen & Tracy

HOT TRAVEL TIPS for the cold months . . .

If you're planning your 2026 escape, Lisa and Karen from AJ Travel share their favourite holiday destinations.

Lisa's longing for Lake Orta, Italy's best kept secret and as she says 'my home from home'.

'Nestled in northern Italy's Piedmont region, Lake Orta's one of the smallest, most tranquil and picturesque lakes, just 15 minutes from famous Lake Maggiore. Medieval village Orta San Giulio has stunning island views of Basilica di San Giulio, an active Benedictine monastery.

'Explore the lake via ferry, visiting the quaint villages of Pettenasco and Pella, and the northern shore town of Omegna with its array of restaurants and coffee shops. Aim for the Thursday market which stretches along the shores of the lake.

'If you enjoy incredible scenery, hiking into mountain villages, water sports, or simply strolling along lake paths plus

fabulous cuisine then why not consider glorious Lago di Orta. It's been my favourite for the past 32 years!

Karen is an Asian travel fan! She says, 'I've loved every minute of my 40 years in travel but my "stand out destination" of all time has to be Thailand, one of the most special places on our planet.

It's a country of so many parts from Chiang Mai in the north offering thriving wildlife, vast paddy fields and ancient temples to the buzz of the country's capital, Bangkok with its Grand Palace, floating markets and lively nightlife. The stunning Island paradises of Koh Samui, Phuket and Phi Phi with their beautiful turquoise waters, palm fringed beaches, mesmerising sunsets, rainforests and national parks are also not to be missed.

So, whether you multi-centre, island hop or just fly and flop, Thailand has it all.

If you'd like help with booking a holiday to any destination, pop into to chat to Karen and Lisa at LJ Travel. They'd be delighted to inspire and assist.

FROM YOUR MEMBER OF PARLIAMENT

Until Friday 2 January 2026 Tonbridge and Malling Borough Council are consulting on its Draft Local Plan. This is the document which sets out where houses should be built in our community, until the 2040s.

The task for the Council is so much harder than ever before. That's because the Government have increased the housing target for TMBC by around 34%, instructing our Council to find land for nearly 20,000 new homes across this period. I feel for TMBC who have been given no choice and have pushed back against the Government on these housing targets given the constraints on infrastructure.

I did not support these changes in Parliament and have voted against the Government on its planning policy, including the new 'grey belt' definition. When I joined with other MPs to prevent towns and villages being able to merge by protecting the land between them, the Government voted against this.

Grey belt is an especially challenging policy for our area because it effectively takes all land immediately adjacent to towns and villages out of the green belt, if it meets the 'golden rules', which most developers say their land is able to.

In our community it means that much of the land of the Borough Green Gardens development has been put forward again. This would still be the largest allocation within the Draft Local Plan, although no

development would be permitted until a relief road for the A25 is built running from Junction 2a of

the M26 to the Dark Hill roundabout, at the entrance to our village. It shows why our input into this consultation is especially important now.

It is therefore critical we have our say directly to TMBC before the consultation closes on Friday 2 January 2026. I have created a dedicated page on my website with all the information, including links on how to respond. You can visit this at www.tomtugendhat.org.uk/localplan

Please do share your thoughts with me and, crucially, with the Council too. You can also share your views with me as follows:

Contact details:

E: tom.tugendhat.mp@parliament.uk

T: 01732 441563

Post: 130 Vale Road, Tonbridge, Kent TN9 1SP

Web: www.tomtugendhat.org

Social Media - @TomTugendhat

Best wishes

Tom

Tom Tugendhat MBE MP - Member of Parliament for Tonbridge and Malling



Adam's Gardens

Let your garden be mine too

- General Garden Maintenance
- Renovation
- Expert Pruning
- Ideas & Inspiration
- Plant Advice / Supplies

**Friendly, Reliable & Fully insured
Studied Horticulture at Hadlow
(National Diploma - Distinction)**

Ring for a free quote

07957461958

01732 846796

adamurgardener@aol.com



BEST BEHAVIOUR

SCHOOL FOR DOGS

Can we help to exercise your dog?

We collect your dog to run and play with others in a secure field. We return them home happy and tired!

Dogs are collected from Sevenoaks and surrounding villages

Call for more information

Tel: 07967 075917

www.bestbehaviourschoolfordogs.co.uk

Naomi Brooks BSc Animal Behaviour & Welfare



**IGHTHAM
PLUMBING & HEATING LTD**

01732 905959

services@ighthamplumbingandheatingltd.co.uk

Your local reliable
plumbing & heating
engineers,
plus bathroom designs &
installation
with over 25 years of
experience

- ✓ FULLY GAS SAFE & OFTEC (OIL) QUALIFIED - INC LANDLORD CERTS & SERVICING
- ✓ G3 UNVENTED GAS CYLINDERS ✓ LPG
- ✓ ACCREDITED WITH SAMSUNG & VAILLANT AIR SOURCE HEAT PUMPS
- ✓ A/C F1 GAS REFRIGERANT ✓ CSCS SITE TRAINED
- ✓ 24/7 EMERGENCY CALLOUT



**Specialists in all Classic and Sports Car
Restoration and General
Servicing and Repairs**

**Unit 12 Platt Industrial Estate, Maidstone Road,
St Marys Platt, Sevenoaks, Kent, TN15 8JL**

**Telephone: 01732 884 288
Email: info@fourwaysgroup.co.uk**

REPORTING COMMUNITY ISSUES

TMBC Refuse Collections: Click on the link below for all refuse questions: <https://www.tmbc.gov.uk/bins-waste/check-waste-collection-updates>

Highway problems including potholes, drainage and overgrown roadside foliage: <https://www.kent.gov.uk/roads-and-travel/report-a-problem>

Community Police Contact:

Our local contacts are: Inspector Terry Newman;
Sgt Nick Atkinson; PC Dylan McElligott and Irina
Mgebrisvili, Community Liaison Officer - PSE.



Call 101 if you need to contact the police for a non-emergency; 999 for an emergency or report issues with a simple online [form](#).



Stephen P. Gay

Funeral Service and
Memorial Masons

*serving the community
Since 1982*

Funerals tailored to suit individual requirements

Memorials made using the very best materials available

Funeral Homes

www.stephenpgayfunerals.co.uk

9 Western Road, Borough
Green, Kent, TN15 8AL

Tel: 01732 780222 (24hrs)

b.green@stephenpgay.co.uk

39 & 41 High Street, West
Malling, Kent, ME19 6QH

Tel: 01732 780333 (24hrs)

w.malling@stephenpgay.co.uk

Memorial Showroom

120 Old Road West, Gravesend, Kent, DA11 0LR

Tel: 01474 321 003

www.stephenpgaymemorialskent.co.uk



*"Remembering you on this day,
Comforted by so many memories"*

BRAMM



Brush Strokes

DECORATING SPECIALIST

Ightham-based decorator
With 18 years experience in all aspects
of Interior and Exterior work.
Carpentry work also undertaken.

Contact: Mark Bradley

07940 564 779

brushstrokes7oaks@gmail.com

<https://www.freepress.com/vectors/god>

Churchyard Working Party

It's your time to relax as there
will be a pause until the spring.
We look forward to seeing you
in 2026!

Parish Archive

Ightham Parish Council is looking for
a volunteer to manage the archive
in the lower Village Hall. If you are
interested in taking on this role,
please contact the Parish Clerk:
ighthamclerk@gmail.com

BRS LANDSCAPES.COM

*Specialists in hard landscaping,
with an artistic eye and an
understanding of plants*

Block Paving Driveways * Patio's
and Paths * Brickwork, Rockery
Construction * Fencing and Trellis *
Turfing * Planting and Staking

Difficult conditions never a problem

*For assistance with both the creative
& practical aspects of garden design*

Call Bradley on 01732 763289 or
07788 560818 or email contact@brslandscapes.com
brslandscapes.com

NEWS FROM IGHTHAM PRIMARY SCHOOL

I am delighted to join the Ightham community as Headteacher of Ightham Primary School. It has been a wonderful start to the year, and I am pleased to share some of the exciting news and activities happening at our school.

Firstly, Maple our school therapy dog, has had a very warm welcome and has already made many friends among the pupils and staff. Maple's presence is helping to create a calm and positive atmosphere throughout the school.

Our school community has been very active with several sporting competitions involving

Sevenoaks schools and other schools within the Pioneer Academy. Our

pupils always represent Ightham Primary with great sportsmanship and impressive skills, making us very proud.



We recently celebrated Harvest Services with great enthusiasm. Key Stage 2 pupils gathered at the church, while Key Stage

1 held their service at school. The children sang beautifully and reflected on the importance

of being thankful to everyone who works hard to provide the food we enjoy.



Curriculum enrichment has been a highlight this term. Year 6 visited Ightham Mote to commemorate the 40th Anniversary of becoming part of the National Trust, Year 3 engaged in an interactive workshop on The Iron Age and Stone Age to support their history learning,



Year 1 visited Penshurst Place for a Toys Through Time workshop, Year 5 became Mini Medics, and Year 6 completed their Bikeability training. Additionally, pupils across the school have continued to enjoy Forest School sessions and swimming lessons, which are vital parts of our holistic approach to education.

Our pupils also showed their creativity and baking skills by making and decorating Pudsey-themed cakes for a school cake sale. The imaginative designs were truly impressive and demonstrated great enthusiasm and talent.

Looking ahead, we are excited to prepare for Christmas with a range of festive activities. These include a Christmas Tree Assembly, nativity, a Carol Service at the church, and a special Christmas lunch. These events bring the whole school community together to celebrate this joyful season.

We are proud to be part of such a vibrant community.

Best wishes,

Sue Earl, Headteacher

STOP PRESS! STOP PRESS! As at today (Fri 14 November) we have raised over £500 for Children In Need from the Year 6 Cake Sale and everyone Wearing Polka Dots for Pudsey!

SEPTEMBER 2026 NEW ENTRANTS OPEN DAYS

Wednesday 7th January at 9:30am

If you would like to book a place, visit <https://forms.office.com/e/p28t8EBTH4> or email admin@ightham.kent.sch.uk or call us on 01732 882 405

FRIENDS OF IGHTHAM SCHOOL

Friends of Ightham School (FOIS) are an active support and fundraising group for Ightham Primary School.



FRIENDS OF IGHTHAM SCHOOL

If you would like to know more about Friends of Ightham School, make a donation or see how you can get involved please do get in touch by contacting Mark Keenor on 07770 440343

Friends of Ightham School
Registered Charity No. 1192718
Natwest Business Current Account
Acct No. 83188312
Sort Code: 51-81-07

CHRISTMAS AT SHIPBOURNE FARMERS' MARKET



The Market will be open every Thursday as usual up to and including THURSDAY 18 December plus a special “pick up” Market on MONDAY 22 December from 8.30am - 10.30am for pre-ordered items.

All our normal local produce, veg, meat, bread, fish, fruit, cheese, cakes, eggs and nuts will be available at the Market as well as special Christmas products and presents. These include Christmas cakes, Alpaca yarn knits, Christmas cards and decorations, Christmas chutneys and jams, German Christmas pastries, local spirits, Kentish sparkling wines, local apple juice plus unique handmade chocolates, dried flower wreaths and freshly harvested Greek olive oil.

Shipbourne Primary School will sing on Thursday 11 December and the Tonbridge Community Choir will sing at the final 2025 Market on 18 December when we will also be serving mulled wine and mince pies to all our customers.

The Co-operative Stall will be selling Christmas cards, with all proceeds being split between the St Giles' Restoration Fund and Shipbourne Village Hall. This year's cards have been designed by two young local artists who won our Christmas card competition – congratulations to Ostap Shport and Tabitha Manktelow!

How about some interesting spirits made by our own local Greensand Distillery, including G&T miniature gift bags or sparkling and still wines to rival the best

in the UK, created by our local Kent vineyards. To improve your leftovers once Christmas Day is over, try the variety

of chutneys made by Winsford House Produce (who will also be selling jar gift boxes which you can mix and match yourself). A variety of cheeses will be available from Winterdale and beautiful cards, Christmas decorations and stationery items from Arty Bee Designs. Don't forget to pre-order your Christmas cake and pud from Debra. Mittens, scarves, hats, toys and tree decorations created by Rosemary from yarn provided by her herd of alpacas make perfect presents, as do Nick's beautiful pottery masterpieces. Watts Farms will be offering their usual vast array of fruit and veg and Will and Kieran will have all the fish and meat you need for your festive entertaining. As well as his usual breads and pastries, our baker Ridwan, will be drawing on his German heritage for Christmas and will be offering bakes you would usually find at a German Christmas market. Jo from The Sandhurst Flower Hut will also return with her beautiful dried flower Christmas wreaths.

Whatever you choose, buying locally means you are supporting small local producers and avoid the queues and stress of the supermarkets.

Please speak to stallholders directly to order your Christmas produce in advance and make sure you order as early as possible.

Please note the market will take a short break after Christmas and re-open on 15th January 2026.

We would like to thank all our customers, stallholders and volunteers for supporting Shipbourne Farmers' Market throughout 2025 and send our best wishes to everyone for a peaceful Christmas and 2026.

To find out more about Shipbourne Farmers' Market and to sign up for the weekly e-Newsletter, visit www.shipbournefm.co.uk

SHIPBOURNE FARMERS' MARKET CHRISTMAS DATES

11th December 2025:	Carols from Shipbourne Primary School
18th December 2025:	Carols from Tonbridge Community Choir
22nd December 2025:	Pick-up Market
15th January 2026:	First Market of 2026

COOKERY CORNER

LITTLE CHERRY AND CHESTNUT CHRISTMAS CHOCOLATE BROWNIES

Makes 50 mini brownies / 35 mins plus cooling time

Ingredients:

- 175g unsalted butter
- 200g good quality dark chocolate (70% cocoa solids), broken up
- 75g dried cherries
- 75g whole roasted chestnuts, chopped
- 75g cocoa powder
- 100g plain flour
- 1 teaspoon baking powder
- 300g golden caster sugar
- 4 large free-range eggs
- Icing sugar for dusting
- 1 x 500ml tub crème fraîche to serve
- Zest of one orange to serve

Method:

1. Preheat oven to 180C/350F/gas 4. Line a 20cm x 30cm baking tin with

greaseproof paper. In a bowl over a pan of simmering water, melt the butter and chocolate, mixing gently until smooth. Stir in the cherries and chestnuts then remove from the heat. In a separate bowl, mix the cocoa powder, flour, baking powder and sugar. Add this to your melted chocolate mixture then stir until it's thoroughly combined. Beat your eggs, then mix these in too.

2. Pour brownie mixture into the baking tin and place in the oven for around 15-20 minutes. You don't want to overcook it, so you don't want a skewer to come out clean. The brownie should be slightly springy on the outside but gooey in the middle. Allow them to cool in the tray for 30 minutes then carefully turn out on to a chopping board and cut into 3cm squares. Pile them on plates and dust with icing sugar. Serve with bowls of crème fraîche, with orange zest grated over.

From jamieoliver.com

BRAIN MATTERS...

Christmas nostalgia matters...

A wet and windy November thrusts us headlong into December the season of joy, family and Christmas traditions. How does our nostalgia for past Christmas' positively influence our brains and our excitement for the season?

Intriguingly a Danish research team conducted a study which showed the "Christmas Spirit Network" using MRI. The Christmas nostalgia we experience is activated in a specific "Christmas Spirit Network" in our brains which triggers the release of neuro chemicals such as dopamine, serotonin and oxytocin. These chemicals help to promote the feelings of pleasure, social bonding and wellbeing that Christmas ignites.

The "Christmas Spirit Network" study showed that this network showed significantly higher activity in those that had positive associations with Christmas. This activity was indicated in our sensory motor cortex, the pre and primary motor cortex and the parietal lobule. In essence areas that are often associated with spirituality, somatic emotions and our recognition of faces.

When we experience nostalgia we ignite our memory and emotions, our brain activates in the hippocampus,



amygdala and medial prefrontal cortex-mPFC. It also taps into our reward system in the striatum and ventral tegmental area (VTA), leading to the release of "feel-good" neurotransmitters. Nostalgia also triggers our sensory cues with smell, sight and sound, and even tickles our olfactory system.

All these systems work together to trigger that joy we experience from hearing a carol, the waft of cinnamon or the twinkle of lights. Tapping into that nostalgia can help improve our mood, reduce stress and anxiety and help feelings of loneliness by fostering a sense of social connection.

Evidently this complex neurobiological process allows us to feel deeply connected not just to our own feelings and memories but also to spread that connection to others. So whilst the news is depressing and the global woes are vast, this Christmas let's focus on spreading a little Christmas nostalgia so that others can feel that same childlike wonder of the Christmas season and feel a little less gloomy and alone.

Wishing you a wonderful Christmas and
happy New Year.

Chantal Montebello-Ealey

Badger Bathrooms



*Local
Independent
Family-run
Bathroom Specialist
Established 42 yrs!*

Supply only or fully installed bathrooms



Book an appointment!

SHOWROOM: Betsom's Farm, Westerham TN16 2DS

www.badgerbathrooms.com 01732 464450

IGHTHAM PARISH COUNCIL



Chairman: Cllr Rodney Willingham

Vice Chairman: Cllr Michael Holden

Parish Clerk: Mrs Sarah Huseyin
T: 01732 886402
ighthamclerk@gmail.com

Councillors: Cllr Steve Burgham
Cllr Carol Clark
Cllr David Emmett
Cllr Stephanie Gunson
Cllr David Hall
Cllr Tamsin Hogarth
Cllr Kirsty Mitchem

AN EXTRACT OF THE PARISH COUNCIL MINUTES October 2025

(Full Minutes can be found at www.ightham.org or by emailing the Clerk)

REPORTS FROM COUNTY COUNCILLOR & BOROUGH COUNCILLOR:

McElligott gave an overview of recent crimes in Ightham including instances of suspicious behaviour, a vehicle theft and a garage break-in. Dylan is responsible for 9 other Parishes. Dylan has also carried out speed checks on the Borough Green Road and found that drivers are generally keeping within the speed limits. At a check on 10.10.25, 1 ticket was issued to a driver doing in excess of 40mph. Dylan said that he was happy for his email address to be shared.

County Cllr Rayner reported that there had been a lot of activity within Reform with some members being

suspended and some defecting; they are down to 50 seats.

Local Government

Reform arrangements are continuing with 3 Unitaries being preferred. Reform have asked Management Consultants to run figures based on a single Unitary as they are looking to demonstrate that disaggregating to 3-4 Unitaries would cost £100m+ whereas a single Unitary would cost significantly less. The deadline for the proposals is 28 November 2025. Cllr Rayner attended a meeting this morning with local Parishes including Platt, Plaxtol, Wrotham, Shipbourne, Ightham and Borough Green. The Parishes agreed to look at the issues, and add a Parish wide view to be taken into account.

The Local Plan is due for release this evening; papers have already been circulated in draft by Cllr Mike Taylor.

Regarding adult services, an additional £30m was spent to end June and Cllr Rayner estimated a similar figure was due to be announced to date.

At KCC several environmental policies are not now going ahead.

Cllr Willingham commented that the Borough Green Gardens development was back in the Local Plan. However, if approved it would take at least 8 years to build as the road from Dark Hill to Wrotham Heath would have

PUBLIC OPEN DAYS

Join us at Planet Plants,
your local wholesale
nursery specialising
in ornamental shrubs
and trees, on dedicated
public open days this year.

PLANET PLANTS

Visit our website and follow us on Facebook and Instagram to find out about these events which take place from Spring to Autumn or get in touch to find out more.

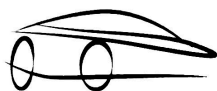
 planetplants.co.uk

 facebook.com/planetplants

 instagram.com/planetplants_ightham

Tel 01732 884589 Email info@planetplants.co.uk

PLANET PLANTS, BACK LANE, IVY HATCH, IGHTHAM, SEVENOAKS TN15 9AU



CAR WRIGHT

Auto Services

Sevenoaks Road, Ightham, TN15 9AD

01732 780591 For All Auto Queries 07747535657

All makes and models | MOTs | Free Courtesy Car

Free local collection and delivery.

Brakes | Servicing | Repairs | Number Plates

All mechanical and diagnostic work carried out by

Qualified automobile engineers

to be completed first.

Cllr Rayner left at 7.35pm

MATTERS ARISING

Highways & PROW Matters: HIP update – HIP update - Following a collision of a truck with a telegraph pole near The Street bus stop in October, KCC have suggested that we can request school children warning signs on our HIP. It was unanimously agreed, and also that we ask KCC if there are any other feasible safety measures to protect the school children waiting at the bus shelter.

Approval 20mph signage Oldbury: Kent Highways have circulated the design scheme for the 20mph limit at Oldbury; unanimously approved.

Bates Hill: The Clerk reported that she had received a request for traffic calming on Bates Hill and will chase up the lining and signage scheme and find out when it is going ahead.

Old Lane: We have received information from Kent Highways to say that the process for introducing a prohibition of motor vehicles is underway and they will let us know once they're at the consultation stage.

Access will be allowed for residents. This is likely to conclude in Spring 2026 for implementation early in the new financial year. The Highway Maintenance Team is arranging for sweeping to take place in January and February. A site visit will then take place mid-February to determine the works needed (likely to include regulating, profiling the ironwork and

possible installation of lockable bollard/s pending approval) and subsequent costs.

The team is currently aiming to deliver the maintenance works in April 2026.

Velocity Scheme for The Street: Velocity have suggested a traffic scheme to slow traffic entering The Street from Borough Green Road. It was agreed that we should go back to ask them how to progress it with Kent Highways and find out whether it was feasible before taking the next steps.

Mirror on Back Lane junction: The Clerk has been in contact with the landowner who has given permission to install the mirrors. The Clerk has ordered 2 mirrors and Cllr Willingham will ask James Hayward if he can put them up on metal posts.

Cllr Holden suggested that removing the grass verge would improve safety at the junction; The Clerk will put in a request to Kent Highways.

Back Lane bus stop: Cllr Holden said that he would look at removing the timetable.

Winter preparation: The Clerk has ordered salt bags for the Village Hall and footbridge. Cllr Hall reported that the salt bin at Redwell/Common Road was only quarter full.

The ongoing leak on The Street was mentioned and the Clerk said that she would write to Tom Tugendhat.

Recreation Ground: Playground repairs – Quote £575 for woodwork - agreed. Quote £2,284.80 equipment





THE WROTHAM CHRISTMAS CONCERT

ST GEORGE'S CHURCH
WROTHAM KENT TN15 7AH

WROTHAM FESTIVAL CHAMBER CHOIR

Conductor: Neil Rollings
Organ: Nicholas Castell

SATURDAY 13TH DECEMBER 2025
7.00pm

THE CHURCH BELLS PEAL FROM 6.30PM

TICKETS AVAILABLE IN ADVANCE: £13.00

[SCHOOL AGED CHILDREN FREE WHEN ACCOMPANIED BY AN ADULT]

Buy tickets online: <https://www.wrothamchurch.org/wcc25.html>

Tickets Available from: ST GEORGE'S CHURCH [TUESDAY/SUNDAY MORNINGS]



SELLING FRESH QUALITY LOCAL PRODUCE

Winterdale Cheese - Organic Eggs from Crouch
Plaxtol Bakery Bread - Kentish Mayde Pies
Korkers Sausages - Local Gins - Chapel Down Wines
Ightham Honey Local Fresh Fruit

*Beautiful Dog Friendly Coffee Shop, Afternoon Teas
(Eat In or Take Away), Outside Catering,
Quality Local Produce, Homemade Food & Cakes,
Freshly Made Sandwiches / Platters, Cooked Breakfast,
Freshly Baked Pastries, Confectionary, Groceries,
Dry Cleaning Service, InPost Lockers*

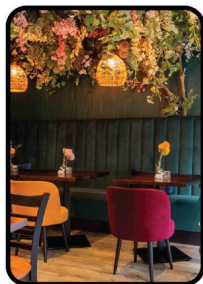
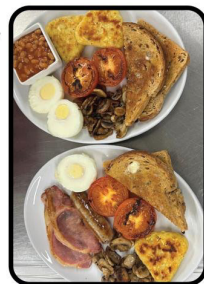
COME SEE US.....

Sevenoaks Road, Ightham, TN15 9AD
01732 781134

thehutchdeliandcafe@outlook.com

(next to The Village Car Wash on the A25 - ample free parking)

Mon-Sat • Closed Sunday & Bank Holidays



and maintenance - agreed. Surfacing quotes - Awaited. Emergency Tree work at Skips retrospective approval - £348 + VAT. VTA Recreation Ground quote £450 + VAT - agreed. Split tree on path to Skips/quote to remove - £480 + VAT - agreed. The Clerk reported some changes at the Football Club. They will take care of maintenance of the goal posts which have been fixed. The planning application for the Recreation Ground sign has gone into TMBC and we are awaiting approval.

Village Hall: Update – Discussed in Part 2.

Flooding: Busty Stream – Clerk to ask James Hayward to clear vegetation from the banks and ask KCC about clearing the riverbed. Basted Mill – The Clerk attended a meeting with Cllr Taylor and TMBC on 16 October to discuss a proposal for nutrient attenuation berms at Basted

Mill. Cllr Taylor had expressed concern about this potentially causing back up into the Busty, which is in an EA flood risk area. Having discussed the plans in detail, both the Clerk and Cllr Taylor were satisfied that their proposals were unlikely to increase the flood risk, and that they had understood our concerns and would monitor the scheme closely to eliminate even that small risk.

Oldbury Annexe: New lease. The lease has been drafted largely based on the old lease with the addition of a deposit clause as it is now a commercial lease. The lease was agreed and it was resolved that Cllr Willingham and The Clerk would sign on behalf of the Parish Council. It was agreed that the school could access the annexe once their part of the lease was signed and



KENT COUNTRY SERVICES
Mowing Forestry Permaculture

07745 165 620
contact@kentcountryservices.co.uk

the deposit and rent received. Cllr Hall asked who was responsible for the legal fees. The Clerk said that there had been no prior agreement for the school to pay the fees. We are awaiting an invoice from Warners.

Archive: Replacement archivist – we are continuing to advertise in the Parish Magazine.

TMBC ASB Enforcement Team: A Report has been circulated and the Team have been in attendance to speak to parents about parking on Oldbury Lane. There has been an incident of graffiti on Oldbury Lane and an intruder at Skips; both have been reported, and we understand that someone has now been detained.

St Peter's Church: Update. Meeting arrangements to discuss churchyard maintenance – yet to be arranged. Request for increased support for Parish Magazine to £1,400 – having seen the income/expenses figures, it was agreed that we would keep our contribution to £1,000.

Meetings: KALC T&M Area 9.10.25 – Cllr Willingham and The Clerk attended. The local government reorganisation, the Local Plan and local policing were discussed. Local Government Reorganisation 21.10.25 - Cllr Mitchem attended this meeting organised by Marius Carboni at Plaxtol PC. There is a concern amongst Parishes that extra responsibilities will be placed upon them. Mr Carboni would like to respond to the submission to state what we are and

are not prepared to take on; and for extra responsibilities we will expect training and an extra budget. Cllr Mitchem will circulate a note.

PLANNING

Tonbridge & Malling Local Plan – Regulation 18 consultation. A plan for 3,000 new houses at Borough Green Gardens has been included although subject to the caveat mentioned above. Ightham has been allocated 18 houses in Rectory Lane and Fen Pond Road, recognising that most of the village falls withing National Landscape. Councillors thought that this allocation was fair. The consultation will run from 10 November until after Christmas and we will need to discuss the proposals in detail at one of our next meetings. Matt Boughton has offered to come and speak to Parishes about the plan and how to respond. This is the first stage of the process; more sites can be added at Reg 19 which will be after Christmas.

Cllr Taylor is also applying for Borough Green to become a Town; it will need the approval of the Parish Council and they are currently consulting on this. If it does become a town, it will add some protection for Ightham as there has to be a green wedge separating the villages.

PLANNING APPLICATIONS: 8 planning applications were received, and no objections raised. TMBC approved 3 planning applications.

Highways Act 1980 - Section 119
- Order Making Authority: Kent
County Council Title of Order:
THE KENT COUNTY COUNCIL
(PUBLIC FOOTPATH (MR614
(PART) IGHTHAM) PUBLIC PATH
DIVERSION AND DEFINITIVE MAP
AND STATEMENT. We have been
asked whether we wish to make
representations about the proposals
for the diversion. The Clerk was asked
to write back to say that we stand by
our original comments.

AOB

Cllr Mitchem reported that she was
still awaiting an answer from Cllr Betts
on the Borough's litter spend.

The Clerk reported that a new pub
called the Pig and Pickle was due to
open at Crown Point.

Cllr Holden reported that there was
some new exercise equipment in
Wrotham Park. The Clerk will email
the Clerk for details.

The meeting went into Part 2 and
closed at 21.55

Borough Green and Wrotham u3a

This is just a reminder that Borough
Green and Wrotham u3a monthly
meetings are held on the second Monday
of each month at 2 pm in
Borough Green Village Hall, with tea,
coffee, and biscuits.

Parking/disabled access available.

At our meeting on 8th December we
will have Sleepwalk - a group of
talented retired musicians who will play
favourite hits from the 1960s-

1980s to get us into festive party spirit.

On 12th January we will welcome Philip
Waite, a retired RAF Police Sergeant
who served in the UK and Germany on
worldwide RAF operations, and on
a special squadron undertaking royal and

ministerial visits,
and VIP and
ceremonial
duties.



We look forward to welcoming
existing and new members, and
guests (£5). Parking is free for Village
Hall users, so please remember to
register your car in the Village Hall
lobby when you arrive. For further
information, or to join your local u3a,
please contact: info@bgwu3a.org.uk or
visit our website <https://bgw.u3asite.uk>

NPC

TREE SURGERY

BASED IN IGHTHAM

Call Nick:
07712 764 882

www.npctreesurgery.co.uk



Safe removal of dead
and dangerous trees



- Felling and shaping
- Stump grinding
- Hedge cutting
- Tree and hedge planting
- Fully qualified and insured



Advanced decay detection
equipment to check internal
integrity of a tree



Expert installers of
Jacksons Fencing
(25 year guarantee)

Sunshine Landscape and Gardening Services

Full Garden Services from Design and Construction to Lawn maintenance and cutting, beds planted and weeded. Trees and shrubs trimmed, hedge cutting and planting. Paths, Patios and Fencing.

Free quotes with no obligation.

For all your garden requirements
call Alan on 07711 079014

Locally based and Hadlow qualified.



Pilates

Tuesdays 9am & 10am

Ightham Village Hall

Find out more by emailing:
bodywellnesspilatesstudio@gmail.com

Group Reformer and
Private Sessions
at other times - Studio in
Hildenborough

www.bodywellnesspilates.org



A Timeless Christmas at Ightham Mote

22 November – 4 January

Journey through seven centuries of yuletide traditions from the pagan Middle Ages to the sparkle of the 1980s.

With evocative lights, nostalgic soundscapes and seasonal scents, explore how Christmas has been celebrated through the ages, from Victorian splendour to 1950s vintage glamour, ending with a tribute to 40 years of National Trust care since 1985.

Enjoy a festive programme of walks, workshops and live music, delicious seasonal treats in the café and pick up the perfect Christmas gift in the shop. Visit the website for details.

Ightham Mote, Mote Road, Ivy Hatch, Sevenoaks, Kent TN15 0NT
www.nationaltrust.org.uk/ightham-mote

© National Trust 2023. Registered Charity no. 205846.
Photography © National Trust Images/John Miller



Greenacres

Borough Green Road, Ightham, Kent, TN15 9JA.

T: 01732 884726

Get ready for Spring!



- Compost, pots, fertilisers, bird feed, logs and coal
- Seed potatoes, onion sets, seeds and potted spring bulbs
- Gardening tools and planting accessories
- Local farm produce, eggs, cheeses, biscuits, ice cream and fresh bread
- Treat yourself to a coffee available in farm shop
- We stock frozen meals and desserts



Open every day: 9am-5pm

E: sales@greenacresgardencentre.co.uk



We stock — COOK — frozen meals and desserts

1ST IGHTHAM BEAVERS, CUBS AND SCOUTS



Thursday evenings
6 – 8 years old
Ighthambeavers@gmail.com



Monday evenings
8 – 10 ½ years old
Ighthamcubs@gmail.com



Friday evenings
10 ½ – 14 years old
James.r@Ighthamscouts.org.uk

All Sections are open to both boys and girls and operate on admission policy, please contact us as early as possible to have your child put on the expression of interest list, as all sections are always very popular.

The admissions manager email is ighthambeaverlist@gmail.com

Any questions about the Scout Group please email James.r@Ighthamscouts.org.uk or ring 07974 412932

www.Scouts247.org.uk



PLAXTOL PEST AND WILDLIFE MANAGEMENT

rats... mice... bird control... squirrels... rabbits... wasps... hornets...
flies... moths... cockroaches... bedbugs... fleas... moles... ants



All Pests Covered
Fully Insured
Fully Certified

Satisfaction Guarantee
Value for Money

DBS Checked
BPCA/RSPH Trained
Electronic Fly Unit

DOMESTIC

COMMERCIAL

PEST PREVENTION CONTRACTS

Ciaran Payne 07368 605762

@PlaxtolPest  

info@plaxtolpest.co.uk www.plaxtolpest.co.uk

designed by www.amanadecolts.com

THE IGHTHAM CLUB

Sevenoaks Road (next to the Village Hall)

**Fully Licensed Bar
with outside patio garden**

Pool, Darts, Snooker

Quiz and Music nights.

Plenty of car parking

New Members/Guests welcome.

Feel free to just pop in for a drink
and meet the team

Open from 7pm (except Mondays and
Saturdays). Available for private hire.

**Contact Mark on 07517 548731
with any enquiries**

Clock Care Ltd.



Antique Clock
Repairs & Restoration

John Mathieson

Accredited MBHI

West Dean/BADA Diploma

Based in Tonbridge

Tel: 01732 359006

E: john@clockcare.co.uk

www.clockcare.co.uk

EST. 1991

BIRCH

Construction & Property Maintenance

Email - tbirchltd@gmail.com

Tel - 01732 674317

Mob - 07789 797943

**A local company for all your renovation
and property maintenance requirements**



Central Heating & Boiler Engineers

Gas * Oil * LPG

"you may not need a local & reliable boiler engineer today, just remember our name for the day you do"



Service Installation Repair



01732 885882

<https://www.samsian.co.uk>

GF Harris Garden Maintenance

Small local company (based in Platt) offering a reliable, friendly and professional garden maintenance service including one off, weekly, fortnightly or ongoing visits.

Services include: Lawn Mowing, Hedge Cutting, Planting, Pruning, Leaf Clearance and much more!

Free Estimates - Fully Insured

Contact Grant: 07532340210

Email:

gfharrisgardening@gmail.com



Handyman

All DIY work for reasonable rates

Painting and Decorating,
Kitchen Fitting,
Decking, Fencing,
Sheds and all Carpentry work,
Flat pack assembly,
Jet Washing.

General property maintenance
No job too small

John Ballantyne
Mobile: 07890 034846



Could you be a hero and share your skills?

There are lots of opportunities for you to make a difference and support your local community.

* **Green fingers?**

Lend a hand, tidying up the churchyard and supporting our local biodiversity.

* **Baking or tea-making skills?**

We offer a warm welcome at our Community Coffee Shop, after our Sunday morning services and at Breakfast@Church

* **Good with words or design?**

We're looking for help with the Parish Magazine - writing articles, editing or graphic design, there are a variety of ways to be involved.

* **Digital skills?**

You could help run powerpoint slides, press play for music during the services, help with the website and social media.

If you could be a hero and help, email Naomi on churchwardens@ighthamchurch.org.uk



Website:
TheEcoPantry.co.uk

the eco
Pantry

Social media:
[@ecopantryuk](https://www.instagram.com/ecopantryuk)

Local Plastic-Free Refill Shop

food – toiletries – household

We are an independent plastic-free refill store on a mission to help you cut down single-use plastic waste. Bring your containers & fill them with eco-friendly, organic & sustainable products. Good for you, good for the environment.



Bring your own containers & bottles



Fill them up



As much or as little as you like

Refill your:

Cereals, nuts, seeds, pasta, grains, baking, tea, coffee, cleaning products, haircare, body care, skincare, chocolate & more.

Open:

Tuesday to Friday: 9–4
Saturday: 9–3
Sunday & Monday: CLOSED

Find out more at: www.TheEcoPantry.co.uk

Find us:

Chart Farm,
Styants Bottom Road,
Seal Chart, Sevenoaks,
TN15 0ES

or type 'The Eco Pantry' into Google Maps

SAMARITANS

Sevenoaks

Do something you're proud of

As a Samaritans volunteer,
you'll help us be there for
people when it matters most.

Volunteer with us

We will train, mentor and
support you all the way.

To find out more and apply, visit
samaritans.org/volunteer

Call 07388 179 760

Email [sevenoaks.recruitment@
samaritans.org](mailto:sevenoaks.recruitment@samaritans.org)

A registered charity

THE WEST KENT AUTISM PARENT SUPPORT SOCIETY



For parents and carers of children and
young people with autism, ADHD
or social communication difficulties

With Claudia Goodman

Special Needs Teacher, ex SENCO and parent of son with ASD

Meet on the
first Tuesday
of the month

9.30-11.30am

St Peter's Church
Centre, Ightham,
TN15 9JD

£2 entry includes
refreshments

- * Contact with other parents
who understand
- * Feel less alone in a
safe, welcoming and
non-judgemental setting
- * Share useful strategies
and information re contacts
and local resources
- * Learn and gain knowledge
about best strategies and
management
- * Problem-solve and
find ways forward
- * Join us for talks, zooms
and socials

A friendly welcome to all!

For further details/to register interest:
Claudia 07773 599543

ON CALL CARPETS

Your local company for reliable service & quality products at a price you can afford.

Domestic and Commercial

Private Homes, New Buildings,
Offices, Medical Centres,
Dentists, Nursing Homes,
Shops, Let Properties.



01732 886672

www.oncallcarpets.co.uk

sales@oncallcarpets.co.uk

Choose in the comfort of your home or office - Quality fitting service, fully insured
Call: ANDY to arrange a no obligation quotation at a time to suit you - day or evening



FRUIT OF THE SPIRIT

Four sandalled feet, and four weary hooves descended to
the Cave,
tired and as quickly as they were able.
They reached the door of the Cave - the Stable
where their journey ends with a great event -
while Angels sang a sweet Lament.

At first sight, folks who were really humble;
then rough, kind Shepherds landing in a bundle
on the floor! They welcomed the King for evermore.
A new born babe with swaddling bands, lay
was surrounding his head and hands.
A manger was this child's given crib.
To Mary's song he timely came
and Emmanuel Jesus was his special name.

A guiding star had shown the way to men of wisdom
now in sight with gifts, for the King of God's Kingdom.
Amazed and feeling slightly tense,
They gifted Gold and Myrrh and Frankincense.
Now Angels filled the room with light,
and sang Glorias much to their delight.
With prayer and praise the men met the night
Not Herod's way, but homeward without delay.

On Christmas Eve with knees proudly bent,
thank the Lord for the child who was Heaven sent.
He taught us all to be meek and mild.
Read 'The Word', and see 'The Light'
of this true and Holy Christmas night.
Sing, "Peace on earth, Goodwill to men".
with the Glorious Angels, again and again -
to God.

Di Coleman 2025

WEEKLY

8.30 – 11.00am
every Thursday
St Giles' Church,
Shipbourne

LOCAL

Seasonal produce
and goods

SUPPORTING

Farmers, artisans and crafters



www.shipbournefm.co.uk

PHONE SOCKETS



25 Years Local
BT Engineer


**WHY PAY SERVICE PROVIDER
PRICES FOR INTERNAL
FAULT REPAIRS!**

New Telephone & Broadband
Extensions and Improve BB
Speeds. Phone Sockets For
Sky TV. Cat5 Wiring.

Fault Finding, Rewiring
& Socket Repairs.

Internal & External Re-routing / Tidying
of Cables prior to Double glazing.
Fully Insured. CRB Certificated.

**TEL: G. NUGENT
07845 705900**



Are you organising a
children's party? A talk?
A disco? A yoga class? A
wedding reception?

If so, why not think of using the
IGHTHAM VILLAGE HALL?

Hire charges are highly
competitive, and the space is
perfect for all kind of gatherings.
There is also ample and well-lit
parking.

For further information contact
Jenny Elliot
E: ighthamvillagehall@gmail.com

IGHTHAM & DISTRICT GARDENERS' CLUB

Held At Ightham Village Hall

May we introduce our club to you?



We're a local Gardening club, who meet once a month (other than January/December) in the evening at Ightham Village Hall.

Our talks are 'all things gardening'. Come along and meet us if gardening is a passion, a recent hobby, or if your garden shrubs and flowers need a little expert advice! If new to the area, we'd love to introduce you to fellow local gardeners.

Our club is friendly and sociable, with a wide age span and offers a warm welcome to all. We have wonderfully informative monthly speakers to entertain and inspire us. Post talk Q & As are sweetened by tea and home-made cake!

Annual highlights are bountiful seasonal shows with varied classes of fruit, vegetables & flowers plus domestic and floral classes. There's definitely something for everyone!

We'd welcome a visit from you, so join us for a sociable evening out whilst taking home ideas and tips, even a winning raffle prize.

Membership is £15 per year; visitors are always welcome.

Watch out for our monthly Magazine ads to see what's on or contact us for more information.

Club Secretary: 07799 002129



“Do not be afraid; for see – I am bringing you good news of great joy for all the people: to you is born this day in the city of David a Saviour, who is the Messiah, the Lord”.

Luke 2:11

DIRECTORY

St Peter's Church

Rector	Parish in Vacancy	
Church Warden	Naomi Webster	T: 07421 832919.
	E: churchwardens@ighthamchurch.org.uk	
Parish Office (Mon/Tue/Thur/Fri 9am-1pm)	Administrator	T: 07940 547310
	E: admin@ighthamchurch.org.uk	
Licensed Lay Minister	John Webster	T: 884819
Lay Readers	Michelle Lawson	T: 01634 240598
	Bryan Harris (honorary)	T: 07733 228048
Hon. Treas/Gift Aid Sec.	Max Robinson	T: 885966
Safeguarding Officer	Finley Lawson	T: 01634 240598
PCC Secretary	Sarah Reid	
	E: pccsecretary@ighthamchurch.org.uk	
Church Flowers	Judy Debenham	T: 882640
St Peter's Choir & Music	Carol Kennedy	T: 884764
Bell Ringing	Judith Robinson	T: 0788 0507066
Coffee Shop	Jenny Webster	T: 884819
Men's Breakfast	John Webster	T: 884819
Oasis	Bridget Kelsey	M: 07789 692967
	E: oasis@ighthamchurch.org.uk	
Parent & Toddlers	Kirsty Mitcham	T: 885072
Prayer Group	John Webster	T: 884819

Ightham Magazine

Editorial	Penny Cracknell	T: 07811 066253
Advertising	E: stpetersadverts@btinternet.com	
Subscriptions/Distribution	E: magazine@ighthamchurch.org.uk	

Community Groups & Events

Autism Parents Support Soc.	Claudia Goodman	T: 07773 599543
Ightham Club	Mark Brenta	T: 882104
Ightham Gardeners' Club	Pippa Coulthard	T: 883041.
	Dee Samways	T: 07799 002 129
Ightham School	Sue Earl, Headteacher	T: 882405
Ightham Village Hall	E: ighthamvillagehall@gmail.com	
Ightham Scouts-		
Explorers & Scouts	James Reid	T: 789400
Cubs	E: ighthamcubs@gmail.com	
Beavers	E: ighthambeavers@gmail.com	
Ightham WI	Helen Johnson	
	E: happyflowersgs@live.co.uk	
PCSO	PC Dylan McElligott	T: 101 (non emergencies)

Sports

Badminton Club	Nick Dennis	T: 882078
Cricket Club	Geoff Preston	T: 01474 812594
	Tom Bentall	T: 07712 566772
Football Club	Martyn Reardon	T: 07725 896 886
Tennis Club	Max Robinson	T: 885966

JOIN US FOR

Christmas

IN THE BENEFICE

ST PETER'S IGHTHAM ST GEORGE'S WROTHAM

Sun 7th December

9am Christingle at
Breakfast@Church

Sat 13th December

7pm Wrotham Christmas
Concert

Weds 17th December

7pm Carols in the Square

Sun 21st December

6:30pm Carols by
Candlelight

Sun 21st December

4pm Carols by Candlelight

CHRISTMAS EVE

4pm Crib Service

5:15pm Carols in the
Square

11pm Midnight Communion

CHRISTMAS EVE

3pm Nativity Service
in the Churchyard
11:30pm Midnight
Communion

CHRISTMAS DAY

10am Christmas Family
Communion

CHRISTMAS DAY

10am All Age Christmas
Celebration

10:45am Short Said Holy
Communion

