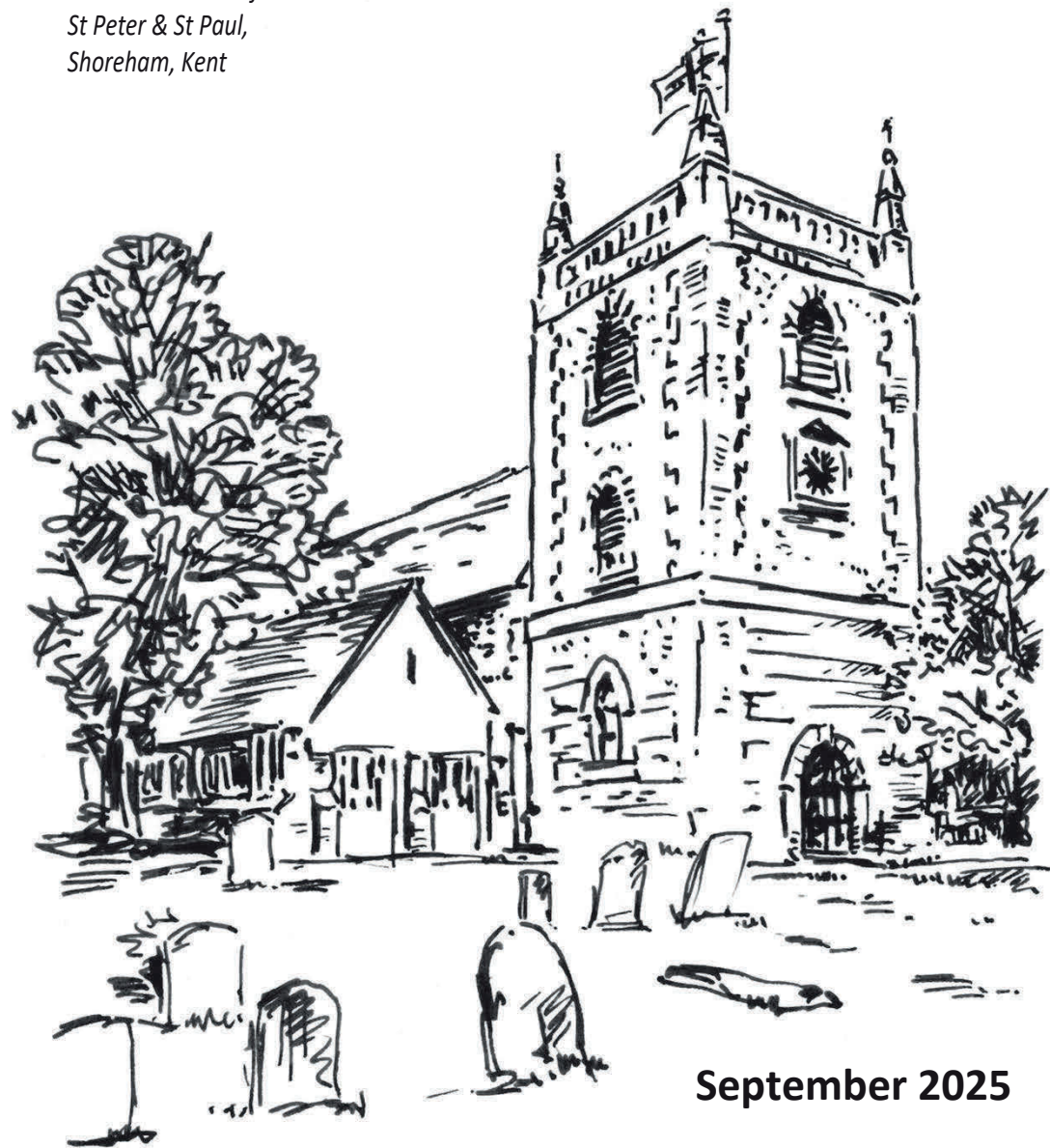


THE SHOREHAM GAZETTE

*From the Church of
St Peter & St Paul,
Shoreham, Kent*



September 2025

All Seasons Gardening

Hedge Cutting • Tree Work

Ground & Garden Clearance

Regular One-off Tidy-ups

All Jobs Considered



Green Waste
Licence Holder

**01732
463669**



HealthTribe
For Balanced Living

**Exclusive well-being studio
at the Quadrangle, Shoreham**

**Health & Lifestyle Coaching -
Personal Training - Osteopathy
- Kinesiology - Classes**
Call 07879630249
www.healthtribe.co.uk

Shoreham Emergency Plan

All major emergencies are dealt with by the emergency services. However, there may be times such as power cuts, snow and ice, flooding or storms where the emergency services are not required. These conditions can make life challenging for more vulnerable people such as the elderly, infirm, disabled, sick or even someone who maybe heavily pregnant or with young children.

If you'd like to be on the list either permanently or temporarily, or you know someone who would, then please contact Amanda Barlow, the Parish Clerk on 0791 2611048 or via email at clerk@shorehamparishcouncil.gov.uk. If you are giving the details of another person please ensure you have their permission and agreement.



**7OAKS
ELECTRICAL** Ltd.

Domestic • Commercial • Industrial

**Your local NICEIC
Approved Electricians**

David Rodgers MIET

 www.7oakselectrical.co.uk

 info@7oakselectrical.co.uk

 +44 (0) 7730 686 414



TRUSTMARK
Government Endorsed Quality



Back to school – good news?

Most parents, I dare to suggest, are somewhere between thrilled and delighted when the long summer holidays finally draw to a close and they can send their little angels back to school. OK, there are the last minute trips to the shoe and clothes shops to navigate first, but all in all it's a great relief to get back to the old routines. No more worry about how to entertain the kids in the long summer days or fretting about who is going to look after them while parents work.

Most children, too, look forward to going back to school: seeing their friends again and getting back to the rhythms of the school day.

The exception can be when starting a new school. Despite the excellent work that schools do to help with the transition, it can be a worrying time. How will I find my way around this huge school with so many children? Will I make friends? Will I find the work too difficult?

We humans are above all social animals, made to be in relationship with one another and - Christians would say – our Creator. So when we enter new environments there is inevitable social anxiety. If you ask people who are not churchgoers how they feel on coming to a church service for the first time, they will reflect some of the same worries as children starting a new school. It's all so unfamiliar.

That's one reason that we felt so encouraged when we recently interviewed some of those new to our church and asked how they felt when they first came. They spoke of a very warm welcome, feeling at home. One person said "It's the way the church treats people...the warm welcome...I feel that I want to go out and just tell everybody it's lovely". Do try coming to church and, we hope, have something of the same experience.

Our brave interviewees agreed to be included in a short video that we are making as part of the advertisement for a new part time Vicar of Shoreham. We want potential applicants to know something about what our church is like, from the perspective of those who have joined in the relatively recent past.

We hope and pray that we will be successful in recruiting someone. And we will also be praying for everyone involved in our schools - children, parents, teachers and others – that the new school year will get off to a wonderfully good start!

Bill Lattimer, Lay Minister
shorehamparish@gmail.com

Castle FARM

KENT, 1892

Visit Castle Farm for local farm foods, fresh eggs,
ice cream, seasonal produce, home decorations &
thoughtful gifts.

Tuesday – Saturday: 9am – 5pm.

Sunday & Bank Hols: 10am – 5pm. Closed on Mondays.

*Order online for beautifully wrapped Gifts &
Hampers to be sent nationwide.*

www.castlefarmkent.co.uk

01959 523219

TN Plumbing/gas



Breakdowns : Callouts
Service : Maintenance

Plumbing : Heating : Gas

Call for a free estimate

Mark Griffin

☎ 07919 621 171 : 07521 841 945

✉ markcharlesgriffin@hotmail.co.uk

🌐 tnplumbingandheating.com

📍 Sevenoaks & Surrounding Villages

TCH Computing PC Maintenance & Support

I provide help with your computer, from
operating system and software installation
to diagnosing and troubleshooting faults, to
giving one-to-tuition.

These are a few of the services I offer:

- Upgrades to Windows 11 (Microsoft
is ending support for Windows 10 on
October 14 – I will talk you through
the different options.)
- Advice on backup procedures
- Malware scanning and removal

For more information, please contact Tom

☎ **07845 139848 / 01959 522361**

✉ **tom_housden2k8@yahoo.co.uk**



White Hill Woods

A characterful log cabin and a charming shepherd's hut set in a beautiful
meadow, a 10-minute stroll from the centre of historic Shoreham.

Enjoy our heated outdoor pool and fire pit.

www.whitehillwoods.co.uk

enquiries@whitehillwoods.co.uk • 07889 998988

SEPTEMBER SERVICES AT ST PETER AND ST PAUL

Friday 5th September

9.30am Friday Prayers

Sunday 7th September - Trinity 12

9am Breakfast@Church

4.30pm Holy Communion

(NB Earlier service due to 6pm concert)

Friday 12th September

9.30am Friday Prayers

Sunday 14th September - Trinity 13

9am Holy Communion (BCP)

10am Morning Worship

Friday 19th September

9.30am Friday Prayers

Sunday 21st September - Trinity 14

10am Morning Worship with Communion

Friday 26th September

9.30am Friday Prayers

Sunday 28th September - Trinity 15

10am Harvest Festival

Friday 3rd October

9.30am Friday Prayers

FROM THE CHURCH REGISTER

10 July	Funeral	Danny Kingshill
14 July	Interment of ashes	George De Decker
29 July	Funeral	Maureen Harris
18 August	70th Wedding Anniversary Celebration	
	Michael and Georgina Hopkins	

COFFEE AND CHAT – FRIDAY 5th SEPTEMBER

Do treat yourself to a healthy walk to the Church Room for a convivial cup of coffee (or tea) and a chance to pass the time of day with village friends. The first Friday of each

I'm George, a Shoreham resident and a florist of 30 years, providing bouquet deliveries, funeral pieces and large scale events.

Using locally grown blooms, where possible, from my wonderful grower in Eynsford.

Visit the website to make an online order or give us a call.



07904 036 403
www.gchapmanflowers.com
george@gchapmanflowers.com

*Inspired By Nature,
Created With Love*



Shoreham Village Stores



OPEN DAILY FROM

8.00am to 8.00pm 7 days a week

A True Mini-Supermarket

Free Delivery

Post Office - Tues & Thurs 9.00am - 2.30pm

Thusyanthan Nadarajah - 35 High St 01959 522 018

month, 10.30am - 12.00 noon, everyone welcome - no previous experience or religious knowledge required!

SEVENOAKS LOAVES AND FISHES FOODBANK

The foodbank says thank you for all the donations from Shoreham. However, they are still very low on all tinned food, cereals and soap. Please consider whether you could add something to your weekly shop. There is a box for donations at the back of the church. Carrier bags are no longer needed!

SHOREHAM WI

Our next WI meeting will be on Tuesday 2 September in the Village Hall, when we will be joined by Barbara Rogers from Avon. Barbara will give us a presentation and talk to us about the latest Avon products, and will have some samples members can try if they wish. Members should arrive at 7.15pm for a 7.30pm start. New members and visitors will be warmly welcomed – please send any enquiries to Shoreham@wkwfwi.org.uk

COMMUNITY COFFEE MORNING

After our summer break, Community Coffee Mornings are back and the next one will take place on Thursday 11 September in the Village Hall from 10am to 12pm. Everyone is welcome to come along for delicious home-made cake and a cup of coffee (or tea) for only £2. These are very friendly monthly events which are regularly enjoyed by many people from Shoreham and beyond – we look forward to catching up with everyone and hearing about what you've been up to since June. Children and dogs are also welcome!

Shoreham WI

HORTICULTURAL AUTUMN SHOW

Come along to the village hall on Saturday 6th September for our Autumn Show.

This may be a horticultural show but it is so much more than just horticulture, you don't even need to be a gardener, you may be a brilliant baker, a flower arranger, a talented artist or crafter. There are also classes for children, and of course if gardening is your thing, there are plenty of classes to enter so there is something for everyone.

If you would like to request a show schedule by email, please contact shorehamhortsoc@gmail.com. Alternatively, schedules will be available from the village store approximately 2 weeks before the show.

Entries should be staged at the hall between 10.00am and 12 noon prompt. Committee members will be on hand to help if needed. Please try to register your entries at shorehamhortsoc@gmail.com beforehand as this really helps. You can always change them on the day.

J. LANGSTAFF LTD



**City &
Guilts**

Electrician



Design & Installation • Fuse Board Upgrades

Security Lighting • Full or Part Rewires

System Upgrades • Fault Finding

New Builds & Extensions • Garden Power & Lighting

PAT Testing • EV Chargers

Additional Sockets & Lighting Points

Professional • Reliable • Courteous • Insured

Contact Jason

t: 01959 525 136 m: 07817 733 257

e: jmllimited@aol.com



PLAXTOL PEST AND WILDLIFE MANAGEMENT

07368 605762

**INFO@PLAXTOLPEST.CO.UK
WWW.PLAXTOLPEST.CO.UK**

Doors will be open to the public at 2.00pm when you will be able to view the show and prize giving will take place at 3.15.

We look forward to welcoming both seasoned and new members to the society. If you haven't been able to exhibit anything, do drop in during the afternoon to look at the show and to enjoy refreshments, delicious homemade cakes and a chat with friends. You can be sure there will be a warm welcome so why not come along and join us?

Sharon Desmond, Show Secretary

SHOREHAM & DISTRICT HISTORICAL SOCIETY

The Historical Society returns to the Village Hall for the first talk of our autumn season on Friday 12 September, when David Carder will navigate us through the History of Maps. The first English printed maps date from 1579, to help the state plan for any dangerous rebellions. Just over 200 years later, the Ordnance Survey would begin its first map of Kent. The meeting starts at 8pm, with refreshments from 7.30. Our annual subscription is still £10 and non-members are welcome to each talk for just £3.

Back in July, we had a successful outing for members to Chiddingstone Castle – an impressive mansion that houses collections of Japanese, Stuart era and Egyptian items, assembled after the war by an antique dealer with a somewhat colourful background.

Always remember our website. News about our latest discoveries can be found under the Home tab at <https://shorehamkenthistory.weebly.com>

James Saynor

OVER 60s

Wednesday 10th September - trip to Falconhurst Gardens. Meet in the carpark at 1.15pm.

Wednesday 24th September - Shoreham's Olympic cyclist, Reg, talks about his experiences. Village Hall at 2pm.

It is with great sadness that Kath and I are stepping down from running the Over 60s. Our last working day, so to speak, will be on 10th December at the Christmas lunch.

We have had a wonderful time over the last few years mainly, of course, because of the lovely members. We would love to hear from anyone interested in taking over.

Suna - 07749 674295. mossykeates@gmail.com

Kath - 07804 141145. kathdymoke@gmail.com

Many thanks to Suna and Kath for their sterling work arranging our programme over the years.

Andrew McKay

Qualified and experienced Carpenter

Also experienced in external and internal painting

Free quotes and advice

07949 011806

Email: **amckay1972@tiscali.co.uk**



HELENBREEZE

THE LETTINGS &
MANAGEMENT SPECIALISTS

We are an independent residential lettings and management agent and have been assisting landlords for 30 years in Eynsford, Shoreham, Farningham and surrounding villages.

arla | propertymark

PROTECTED

If you would like more information or to arrange a free consultation please contact our lettings team.

DianeH@hbpm.co.uk

12 LONDON ROAD, SEVENOAKS, KENT, TN13 1AJ

01732 740789

WWW.HELENBREEZE.CO.UK



Shoreham Village School

You will be warmly welcomed at Shoreham Village School.

Please contact us on:

01959 522228 or office@shoreham.kent.sch.uk



Join Shoreham Village School today to experience our:

- happy, caring, small and inclusive environment
- superb team of dedicated and nurturing staff
- wonderful facilities including iPads, extensive grounds and an allotment
- range of before and after-school clubs

Shoreham Village School is a 'Good' School

"Pupils are fully engaged in their learning. ...they behave well in lessons and around school"

"Pupils achieve well academically and make a positive contribution in their future lives."

Ofsted, April 2019

For more information, visit: www.shorehamvillageschool.net

NEWS FROM SHOREHAM VILLAGE SCHOOL, SEPTEMBER 2025

The new academic year at Shoreham Village School promises to get off to a fantastic start, as our school community will be buzzing with energy, enthusiasm, and a shared sense of purpose. We are especially delighted to welcome several new families into our school and to share that our Reception class is completely full - a milestone we are very proud of. We have no doubt that our youngest learners will embrace school life with curiosity, confidence, and no shortage of smiles.

The first weeks of term will see our children engaged in rich learning experiences both inside and outside the classroom. We firmly believe that education should extend beyond the school building, and our upcoming calendar is full of opportunities that do just that.

Cameron Class is looking forward to an exciting trip to London to visit the Tate Modern. This will be a chance for our pupils to explore world-class art, discover new perspectives, and be inspired to create masterpieces of their own. We know that experiences like these can ignite a lifelong love for the arts, and the anticipation is already building among our young artists.

Meanwhile, Moore Class will be taking part in Gamelan workshops at Sevenoaks School. This traditional Indonesian form of ensemble music, played on unique percussion instruments, offers a wonderful blend of rhythm, teamwork, and cultural discovery. The sessions promise to be both educational and great fun, giving pupils the chance to experience music in a completely different way.

In addition to these special activities, our teachers have been busy crafting engaging lessons, fostering creativity, and will continue to encourage children to challenge themselves. It will be heartening to see friendships forming across year groups, with older pupils looking out for the younger ones – a true reflection of our warm, family-like atmosphere.

We are also looking forward to a busy season of community events, where families, friends, and neighbours can come together to celebrate the achievements of our children. Whether it's through performances, open afternoons, or seasonal celebrations, we are committed to keeping Shoreham Village School a place where everyone feels welcome and involved. Do look out for our contributions to the upcoming Shoreham Art Exhibition in the Village Hall!

We look forward to a joyful beginning to the school year, and with so much still to come, we can't wait to see what the next few months will bring. Our thanks go to our pupils, families, and staff for making Shoreham Village School the vibrant, thriving community it is today.

Gillian Lovatt-Young, Head Teacher
office@shoreham.kent.sch.uk



NEWLANDS JOINERY

the finest handcrafted joinery

**Windows, Doors & Gates, Conservatories
Interiors, Commercial, Survey & Design**

Newlands joinery are suppliers of the finest joinery and bespoke joinery within the Kent area. We pride ourselves on our craftsmanship, expertise, knowledge and customer satisfaction. All of which are among some of the most important things to us. To find out more head over to our website or give us a call.

01959 522981

info@newlandsjoinery.com

www.newlandsjoinery.com

Kent Barn, Filston Farm, Filston Lane
Shoreham Kent TN14 5JU

INVITATION TO BE A TRUSTEE OF THE WALNUT TREE TRUST

The Walnut Tree Trust, a registered charity (no 1182220) operating since 1932, is seeking two new trustees. We own the three cottages at 29 – 33 High Street, just south of Shoreham Village Stores, and including three outbuildings. The trustees are responsible for maintaining and letting these properties to fulfil the objects of the Trust.

Trustees must have a connection to Shoreham. Trustees must act in the charity's best interests; manage the charity's resources responsibly, and act with reasonable care and skill.

Since sometime in the 1950's the property had been managed to provide low-income housing for deserving individuals with Shoreham connections. More recent boards have returned to managing the property at market rents with the profit margin donated to charitable causes in Shoreham or elsewhere. This approach is in fact a legal requirement of both our 2019 Constitution and the Charities Act.

The Trust relies upon the unpaid commitment of Shoreham residents willing to offer their time and talents to create a balanced board of varied skills and perspectives to provide sound management. It is an appreciable time commitment. There are generally between five and eight board meetings per year. Papers are circulated in advance and must be read and considered prior to these meetings. Between board meetings there are other tasks requiring attention. The rewards are making a huge contribution to our community as well as working with interesting and similarly involved individuals.

If you are interested, please respond with a note explaining your interest, how your skills and experience may be applicable and with some background information about yourself.

Respond to: Jill Aisher, Chair: jill.aisher@gmail.com and
Sue Worsfold, clerk: sue.worsfold@hotmail.com

SHOREHAM VILLAGE PLAYERS – JAMES HITCHCOCK 1961-2025

The Players are very sorry to hear of the death of James, who was an energetic and committed Player up until 2020 when he and Vicky left the village. Both on stage and off James made a great contribution. He took many different parts, in musicals, straight plays, and especially pantomimes - he was an unexpectedly feminine Dame. James was always up for a challenge: happily agreeing to fall asleep with his face in a plate of baked beans as the giant in Jack in the Beanstalk, and to channel his inner drag queen in very high-heeled red boots in a Little Shop of Horrors-themed cabaret.

But of course his most memorable part was as unreliable, wheedling, charming Moth in Matt Stevens's production of Two. Having to choose a member of the audience to

Holiday Cottage - Yorkshire Dales

Idyllic location in Wensleydale

3 bedrooms - sleeps 6/7. Enclosed garden

Off-road parking

Dogs welcome

Contact Steve Birkin

birkins78@gmail.com

www.overdalecottage.co.uk

YOUR HEALTHY FEET Foot Health Practitioners



Mobile Foot Health Professional service
in the comfort of your own home

TREATMENTS

- Corns & calluses
- Hard skin
- Verrucas
- Ingrown toe nails
- Thickened fungal nails
- Cracked heels
- Toe nail cutting and care
- Diabetic and High Risk Foot Care and Advice

PRICES

£42
£37 over 65's

Mobile: 07500 041535

Email: sarah@yourhealthyfeet.co.uk

Web: www.yourhealthyfeet.co.uk

Need help with I.T. issues ?

Contact

Andrew
Prosphero - IT Support



For professional and
friendly advice and support
for home and business use

t. 01732 742454
m. 07957 648461

andrew@prosphero.co.uk



Award winning sparkling and still wines

grown locally in Shoreham

01959 524008

www.themountvineyard.co.uk

**Helping hard working,
health conscious people to
solve their frustrating
painful problems, regain
mobility and get back to
their active lives.**

FREE

Discovery session available



Find out how we can help
no risk and no obligation
-call or visit website for details



at the Quadrangle, Shoreham

www.itosteopathy.co.uk

07738 017206

  @itosteo

Back & Joint Pain ~ Muscular Aches & Pains ~ Injury Recovery & Prevention

flirt with every night, one evening his eye fell on Vicky. “You’re beautiful, you” – and that was that. Possibly the most romantic moment in the Players’ history (there have been others).

Always cheerful, full of ideas (and awful jokes), the first to volunteer for any job however tedious, James was a totally positive presence and a joy to work with. Our sympathy goes to Vicky, Mike, Henry and Jonny, and to Sally and Jane.

Kate Britten

CITIZENS ADVICE

Don’t forget you can get free, independent, confidential advice and information from a trained adviser about any problem, big or small: housing, benefits, employment, debt, consumer goods and services or any other issue from Sevenoaks Citizens Advice. You can call the freephone number 0808 278 7810 (10am-3pm, Monday-Friday – be prepared to wait) or email advice@nwkent.cab.org.uk

Kate Britten



EXHIBITION ‘YOUR SHOREHAM – YOUR ARTWORK’

Artists young and old are busy preparing works for Shoreham’s Art Exhibition on Saturday/Sunday 4th /5th October. Everyone’s talent is covered, including Painting, Drawing, Sculpture and Photography, and there is a section for children and young people. Shoreham’s amateur photographers previously displayed their skills in an online photo exhibition in 2021 during Covid, and in the village hall in the same year. We know that there’s a lot of talent out there!

It’s still not too late to enter – but each person can only enter one work. It would greatly help the team plan the layout of the exhibition if you can let us know if you plan to submit – please just drop a line to shoreham.art@gmail.com by **20th September**. Then bring your work to the Village Hall after 5pm on Friday 3rd October, or contact us to make other arrangements.

All villagers and visitors will be welcomed to the Exhibition itself on 4th -5th October from 10am to 4pm. It will be free of charge to enter and plentiful refreshments will be available. So please tell your friends and families!

SHOREHAM SHINE - SATURDAY 11TH OCTOBER 9AM TO 4PM

Just a week later is the village’s bi-annual clean up day and litter pick. A warm welcome, a hot drink, biscuits and all equipment await you – and you can choose your task. It makes for an enjoyable few hours and is fun for families, too. More in next month’s Gazette. Pass the word round now!

John Saynor, Chair; Sarah Andrews, Vice Chair; Rachel French, Secretary

MAT & REFORMER CLASSES
PRIVATE TUITION
SPORTS CONDITIONING
REHABILITATION



THE STUDIO

now at the Education Centre, Coolings Nurseries,
Rushmore Hill, Knockholt. TN14 7NN

Tel: 01959 562192 or 07799 534191
www.pilatesinsevenoaks.co.uk

Shoreham Village



Rated Outstanding by OFSTED,
Shoreham Village Pre-school, offers a
happy, safe and stimulating environment
for your little one to start their education.

Contact Michelle Philbrick

T: 01959 52 55 77

E: shoreham.preschool@yahoo.com

W: www.shoreham.kent.sch.uk



RHB



Carpentry & Joinery

mobile: 07957 560575 • workshop: 01322 933939

email: rhbcarpentryandjoinery@gmail.com

The Joinery, Lower Austin Lodge Farm, Upper Austin Road, Eynsford DA40HT

Phone Sockets/Broadband



25 YRS BT ENGINEER

Fully Insured

New Phone & Broadband sockets / extensions
Fault finding repairs / Improve broadband speeds
Cat 5 wiring
Internal/external re-routing and tidying of cables
prior to double glazing

G. NUGENT 07845 705900

www.fixyourline.co.uk

Gulliver's Travels

Otford based Private Hire Taxi
for pre-booked trips:

- Airports (we meet you in the Terminal)
- Hospital visits (wait and return)
- Cruise Terminals (luggage no problem)
- London
- Days Out (golf, seaside etc)

Ring Simon for a quote 07956 808747

or Email OtfordTaxi@gmail.com

Your Shoreham

~ *Your Artwork*

You are warmly invited to submit work for an art exhibition - **Your Shoreham** - celebrating our community's creativity.

This is an open exhibition on the theme of Your Shoreham. All artworks on this theme will be accepted - so everyone has a chance to show their own individual take about where we live, work, study and play. You can use any medium including (but not limited to) sculpture, painting, drawing and photography.

One submission per person.

Framed/mounted works no larger than 50cm x 60cm unless by prior agreement. Photographs need to be printed at A4 or 8" x 10" and do not need to be framed. We'll provide more details about when and where to drop off work nearer the time.

Your work can be for sale with a minimum 10% donation of the sale price going towards exhibition costs.

This exhibition, organised by the Shoreham Society, will be held on the ***weekend 4th/5th October 2025 in the Village Hall, Shoreham.***

Work to be delivered to the Hall after 5.00pm on Friday 3rd October (unless by prior arrangement to be dropped off earlier and held in storage until Friday 3rd).

If you've any queries or ideas you'd like to run past us please email ***Amanda at shoreham.art@gmail.com***





A LADY TRIES HER HAND ON THE DARENTH, CIRCA 1900.

The maid on the left is bringing refreshments. This photograph was taken near Dartford, on Mr. John Russell's water.

From Angling Diversions by A Courtney Williams, published in 1945 by Herbert Jenkins. The author remarks in the entry for Darenth that the river was renowned for the number of trout it held and notes, "It was of this pretty little Kentish stream that the poet, Michael Drayton (1563-1631), once wrote:

The silver Darenth in whose waters clear.
Unnumbered fishes sport."

HOPPING WITH LIFE

Why not have a search for grasshoppers and bush-crickets in your local churchyard? Churchyards can be real havens for them as they contain a range of different habitats which may suit different species. Some are found in long or tussocky grass, some scrub and hedgerows, and some in the canopy of trees. Some burial grounds can have more than 3 grasshoppers per square foot!

The easiest way to identify grasshoppers from bush-crickets is to look at their antennae. Grasshoppers have shorter, thicker antennae compared to the antennae of crickets which are long and thin, almost hairlike. Another difference is in their habits:

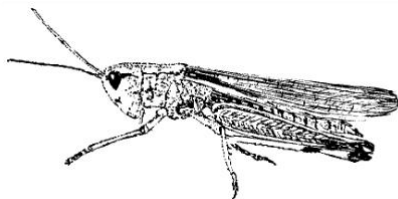
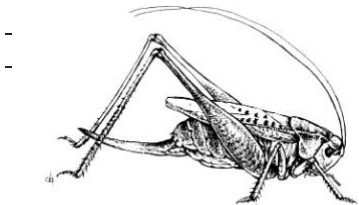


grasshoppers are herbivores, feeding mainly on grass as their name suggests, whilst bush-crickets eat a range of foods including aphids and small caterpillars as well as plant material. These insects have been around on the earth for a long time, they are found in the fossil record of the early Triassic, about 250 million years ago, making them the most ancient group of herbivorous, chewing insects that are still living.

Grasshoppers and crickets are tasty prey items to many larger creatures such as birds, mammals, spiders and amphibians so they have good senses to help them escape this fate. They have large, compound eyes on the sides of their heads, giving a wide field of vision, ears on either side of their abdomens and of course the antennae to sense touch. If under threat they will jump astounding distances, up to 80cm, equivalent to a human jumping the length of a football pitch.

Have a look for grasshoppers within the long and tussocky grass of your churchyard or shake a tree or shrub branch over something white like a bedsheet or plastic tray to see if any bush-crickets fall down. Showing these special creatures to children opens up a world of delight and interest.

Grasshopper with shorter, thicker antennae



Cricket with long, thin, almost hair-like antennae

LADYBIRDS: TINY HEROES IN POLKA-DOT ARMOUR

The ladybird, with its stylish and cheerful polka-dot outfit, holds a special place in our hearts. Few other insects, apart from perhaps the butterfly, evoke as many positive emotions and superstitions as the ladybird. Many cultures believe that ladybirds are a symbol of good luck and new beginnings. In fact, the belief that ladybirds are associated with positive qualities is nearly universal – from Slavic, European, and Asian cultures to Native Americans.

There are 46 different species of ladybirds in the UK and about 5,000 species worldwide. While some sport the classic red with black spots look, others come in shades of yellow, orange, or even black with red spots. All ladybirds are beetles and have a larval and adult form with the classic round and colourful ladybird being the adult whilst the larvae tend to be thin and black.

Many species of ladybird hatch from pupae in August or September so look out for a new generation of adults feeding up ready to overwinter. Ladybirds are voracious predators of aphids and other garden pests, serving as natural pest-control agents and helping to keep plants healthy. In fact, a single ladybird can devour up to 5,000 aphids and other plant-eating pests in its lifetime, making them invaluable allies to gardeners and farmers alike.

Despite their diminutive size, ladybirds are not without their challenges. Predators, parasites, and even rival ladybirds pose threats to their survival. Birds, spiders, and other insects prey on them. They do have defences against predators however, their bright red colour is a warning that they don't taste nice and when attacked they give off a yellow liquid which is rich in toxic alkaloids.

Churchyards and cemeteries can be great for ladybirds as they tend to be free of insecticides and full of food. There are lots of places where ladybirds can find a safe place to spend the winter, often in large clusters where they remain inactive until about March when they emerge to feed and breed. Monuments including chest tombs, gaps made by tree roots, wood piles, spaces beneath flaking bark, leaf litter, tussocky grass and drystone walls are full of potential places to overwinter.



With their rounded bodies and distinctive markings, ladybirds are easily recognisable. If you see a ladybird, take a photo or count its spots and make a note of both spot and background colours. The spot number indicates which species it is, not some people believe, how old it is.

Prue Dakin

www.caringforgodsacre.org.uk

SHOREHAM VILLAGE DIARY FOR SEPTEMBER 2025

Tuesday 2	WI Avon talk by Barbara Rogers	Village Hall	7.30pm
Saturday 6	Horticultural Autumn Show	Village Hall	2pm
Wednesday 10	Over 60s trip to Falconhurst Gardens	Car Park	1.15pm
Thursday 11	WI Community Coffee Morning	Village Hall	10am
Friday 12	Historical Society talk: History of Maps	Village Hall	8pm
Wednesday 24	Over 60s Olympic cyclist talk	Village Hall	2pm

SHOREHAM GAZETTE

Do take a good look at our adverts for local services – we have some new ones! The Stag is updated every month with their latest stage and screen productions.

Donations are welcome to Ken Fowler, who heads the distribution team, or by bank transfer to SHOREHAM P C C Sort code 090155 Account number 00193703. Please reference your name and gazette.

Copy for October Gazette by **18th September** to shorehamgazette@gmail.com
Word attachment in Calibri 10 and single spacing, please. Images as **jpgs**, please

Editor	Anna Fischel	shorehamgazette@gmail.com	
Distribution	Ken Fowler	79 High Street TN14 7TB	01959 522365
Advertising	Julie Carder	julieshoreham@gmail.com	
Postal Gazettes	Terry Clark	terryshoreham@gmail.com	



WHAT'S ON AT THE STAG SEVENOAKS



STAGE • SCREEN • COMMUNITY

THE STAG IS A NOT-FOR-PROFIT CHARITY

WHAT'S ON SCREEN

THE ROSES - STARRING OLIVIA COLMAN
SHOWING NOW
NATIONAL THEATRE LIVE: INTER ALIA
STARRING ROSAMUND PIKE
4TH & 28TH SEPTEMBER
DOWNTON ABBEY: THE GRANDE FINALE
SHOWING FROM 12TH SEPTEMBER
A BIG BOLD BEAUTIFUL JOURNEY
STARRING MARGOT ROBBIE & COLIN FARRELL
SHOWING FROM 19TH SEPTEMBER
THE ROYAL OPERA: TOSCA
1ST OCTOBER
THE METROPOLITAN OPERA:
LA SONNAMBULA
21ST OCTOBER

WHAT'S ON STAGE

DIANA REIGNS SUPREME
6TH SEPTEMBER
OTB COMEDY: STEPHEN BAILEY
11TH SEPTEMBER
WHITNEY - THE CANDLELIGHT CONCERT
12TH SEPTEMBER
CELEBRATING GEORGE MICHAEL
13TH SEPTEMBER
SEVENOAKS ENTERTAINERS AVENUE Q
18TH - 20TH SEPTEMBER
BEATLES COMPLETE
19TH SEPTEMBER
THE FLOYD EFFECT: DARK ANIMALS TOUR
26TH SEPTEMBER
MAJESTY - A TRIBUTE TO QUEEN
2ND OCTOBER
OASIZ - VIRAL TRIBUTE BAND
3RD OCTOBER

BARGAIN WEDNESDAYS!

UP TO 50% OFF CINEMA TICKETS WHEN BOOKED ON THE DAY

BOX OFFICE: 01732 450175
WWW.STAGSEVENOAKS.CO.UK
THE STAG SEVENOAKS,
LONDON ROAD, SEVENOAKS, TN13 1ZZ

FREE HOT DRINK OR POPCORN
ENJOY A FREE HOT DRINK OR SMALL POPCORN ON PRODUCTION
OF THIS VOUCHER AND A VALID THEATRE OR CINEMA TICKET.
VALID UNTIL 01/10/25



Christopher
THE LOCKSMITH 

ARE YOUR LOCKS BEHAVING BADLY?

 We value old-fashioned customer service
A local, trusted family business since 1989 

 Specialist in uPVC and wooden doors
 No call out charge  No fix, no fee
 All work fully guaranteed
 10% Senior Citizen discount

For advice & help call Christopher: **07772 111 222**

www.christopherthelocksmith.co.uk

LAWN MOWING

CONTACT TONY
07305 185 075
01959 523 046


OTFORD LAWNS
A CUT ABOVE THE REST

 
www.otfordlawns.co.uk



SHOREHAM VILLAGE PLAYERS

Are you interested in acting, singing, directing, lighting & sound, stage design & construction, costumes... having a lot of fun and making friends for life?

THEN COME AND JOIN US!

Email:
shorehamvillageplayers@gmail.com

Or call Janet Heuston on:
01959 523 979

Shoreham Village Hall

 Weddings . Parties .
Lectures . Societies .
Functions . Meetings.
Free WiFi

To check availability:
<https://shorehamvillagehall.co.uk/halibooking/>

Bookings by email only:
bookings@shorehamvillagehall.co.uk

Shoreham Pavilion Available for Hire

A fully accessible, beautiful, wooden building with central reception space, kitchen and changing rooms set overlooking the school playing fields and Spellers' Wood.

The facility is ideal for evening or weekend events, adult or children's learning or music groups, and as a meeting room for social groups. The Changing Rooms are available to hire separately in conjunction with use of the field.

For all enquiries, please contact the School Office on 01959 522228.



YOGA BY LUCY: CLASSES FOR ALL IN SHOREHAM VILLAGE

Weekly group classes Shoreham Village Hall

Fusion Yoga : mixed-ability (daytime + evening)

Accessible Chair Yoga : all-levels (daytime)

Private Studio Shoreham Place

Bespoke private and semi-private lessons

On-demand yoga video library



Info and contact Lucy:

🌐 www.yogabylucy.co.uk

☎ 07970 633053

📱 @yogabylucy



Teaching locally since 2017



- COMPANY ACCOUNTS
- MANAGEMENT ACCOUNTS
- TAX PLANNING
- BOOKKEEPING
- PAYROLL

WWW.AMHERSTACCOUNTANCY.CO.UK

xero

01732 462731

INFO@AMHERSTACCOUNTANCY.CO.UK

—
REAL-TIME-DATA

CERTIFIED XERO GOLD PARTNERS



Darent Hulme Barn

BED & BREAKFAST

Self-contained detached barn, offering comfortable and quietly stylish accommodation

Contact Sophie Marsh on
01959 525656/07752 164452
sophie@darenthulme.co.uk
darenthulme.co.uk
Darent Hulme, Shacklands Rd.
Shoreham, Kent TN14 7TU

SHOREHAM ALLOTMENTS ASSOCIATION

Grow your own!

Annual rents

- Full plot £25
- Half plot £15
- Quarter plot £10

Membership Secretary

Vannessa Hills

v.hills098@gmail.com



SUPPORTING OUR COMMUNITY

THE DARENTH
COUNTRY CLUB

THE DARENTH, STATION ROAD, SHOREHAM, SEVENOAKS, KENT, TN14 7SA
01959 522944 • INFO@THEDARENTH.COM • WWW.THEDARENTH.COM