

Wethersfield Parish Magazine

AUGUST 2025



Parish Church of
St. Mary Magdalene
in the benefice of
*~Pant Valley
Churches~*

WETHERSFIELD PARISH CHURCH

St Mary Magdalene

Pant Valley Churches Benefice of

Finchingfield with Cornish Hall End, Wethersfield, Shalford, Gt. and Little Bardfield

* * * * *

Parish Priest

The Reverend Alex Shannon

The Vicarage, Bardfield Road, Finchingfield, Braintree CM7 4JR

Tel: 01371 810309 / 07483 878659

rev.alex.shannon@gmail.com

Associate Minister

The Reverend Canon Janet Nicholls

Park House, Braintree Road, Shalford, Braintree CM7 5HQ

Tel: 01371 851317

jnicholls@chelmsford.anglican.org

Reader

Mrs Sarah Pilgrim, Fieldside, Lombard Street, Finchingfield

Tel: 01371 850781

pilgrim511@btinternet.com

Churchwardens

Mr David Seacombe, Ivanhoe House, Wethersfield

Tel: 07801 868278

Mr Ben Walmsley, Wethersfield Hall, Wethersfield

Tel: 07939 030833

PAROCHIAL CHURCH COUNCIL

Hon. Sec.

Mr Brian Muir, The Manse, Wethersfield

Tel: 07775 675701

hon.secretary@wethersfieldchurch.org.uk

Hon Treasurer

Mr Bob Harris, Top Shop, Wethersfield.

Tel: 07817 379099

hon.treasurer@wethersfieldchurch.org.uk

Ringling Master

Mr Roy Threadgold, Plumley, Braintree Road, Wethersfield

Tel: 01371 850481

roy@boydellsdairy.co.uk

Please contact the Parish Priest for Baptisms, Marriages and when you are in need of help.

He is very happy to bring Communion to the homes of the sick and housebound.

Would newcomers please make us aware of their presence.

Services for August 2025

Sunday 3 August – Seventh Sunday after Trinity

8am Holy Communion (traditional language) – Finchingfield

9.30am Morning Prayer – Shalford

10.30am Sung Communion Service – Great Bardfield

11am Prayer & Pilgrimage (Celtic morning prayer) – Wethersfield

Sunday 10 August – Eighth Sunday after Trinity

8am Holy Communion (traditional language) – Shalford

9.30am Sung Communion Service – Little Bardfield

11am Family Service – Wethersfield

5pm Evensong – Shalford

Sunday 17 August – Ninth Sunday after Trinity

8am Holy Communion (traditional language) – Wethersfield

9.30am Morning Prayer – Shalford

10.30am Sung Communion Service for the feast of St Mary (Patronal Festival) – Great Bardfield

5pm Evening Prayer – Cornish Hall End

Sunday 24 August – Tenth Sunday after Trinity

8am Holy Communion (traditional language) – Great Bardfield

9.30am Parish Communion Service – Shalford

10am Holy Communion – Cornish Hall End

10.45am Flower Celebration Service – Finchingfield

11am Family Communion Service – Wethersfield

Sunday 31 August – Eleventh Sunday after Trinity

10.30am Benefice Communion Service – Cornish Hall End

3pm Children's Church with 'Blessing of Backpacks' for the new school year – Wethersfield

Regular Services and Events during the week

Monday

8.45am Morning Prayer – Finchingfield

1.30pm 'Faithful Fiction' book club (1st weeks) – Between the Lines, Great Bardfield

Tuesday

9.15am Eucharist – Great Bardfield

(preceded by Morning Prayer at 8.45am)

10am Baby & Toddler Group – Great Bardfield

'St Mary's Munchkins' story & song time with refreshments

Thursday

8.45am Morning Prayer – Wethersfield

10am Prayer Group (1st, 3rd & 5th weeks)

Coffee Morning (2nd & 4th weeks) – Shalford

Coffee Morning (3rd week) – Cornish Hall End

10.30am Eucharist – Little Bardfield

Friday

8.45am Morning Prayer – Shalford

Saturday

10.30am (3rd weeks) Coffee Morning – Wethersfield

Church Warden's Report

On 20 July, we had the pleasure of attending a concert by French organist Gabriel Marie. An audience of over 50 people gathered to enjoy a beautifully varied programme featuring works by Handel, Pachelbel, and Gounod, along with selections from film music. Gabriel concluded the evening with a rousing performance of La Marseillaise.

Gabriel is staying with a family in Wethersfield for a short time this summer, and it has been a true delight to hear him play. It's a rare occasion for the Church organ to be heard outside of accompanying hymns during services, making this concert a particularly special treat.

DS

Commonwealth War Grave - Thomas Beddell Harker Newman

Wethersfield churchyard contains hundreds of graves, many with memorials. Over time, these memorials with their inscriptions start to age, lettering becoming more difficult to read, and stonework is weathering or breaking up.

One such family grave is that of the Newman family - Thomas and Lilian, and two of their sons, Thomas and Harold. Two other children, Joseph and Dorothy, are buried in Tottenham and Chelmsford respectively. The family lived in St George's House on the High Street in the late 19th and early 20th century.

The grave is of particular interest, as the son Thomas was recorded as a casualty of the First World War, one of two such burials at Wethersfield. The memorial on the double plot was a classic of its era, being a three-level plinth topped by a cross, all in white marble, and with a marble kerb surrounding the plot. Soil settlement over the past century had resulted in the plinth tilting from the vertical, and the consequent toppling of the cross which broke in two places. The Commonwealth War Graves Commission were not interested in restoring the memorial, as it is a private grave established by the family - although its existence is recorded on their comprehensive database.

Thomas volunteered for service in 1914 with the Royal Fusiliers, despite being seven years older than the age limit of 30 for general recruitment.

There was an exemption for active sportsmen up to 45 years old, and Thomas and many others formed the Sportsman's Battalion. They transferred to the Western Front in France in late 1915 and saw action until he was seriously wounded in February 1917 at the battle of Miraumont. He was returned to England on board the hospital ship Donegal, which was attacked by a submarine on the Channel crossing but survived to complete its passage. Thomas sadly died in a Hampshire hospital in May 1917, was brought back to Wethersfield on 19 May to lie overnight in the church porch with a guard of honour from the Boy Scouts before his funeral the next day, when he was given full military honours.

To respect Thomas's service and sacrifice, his memorial has been renovated by a local stonemason, mending the fractures in the marble, levelling the plinth and remounting the cross. The work was funded locally, and partly by the great-nephews and great-nieces of Thomas - their grandmother was Thomas's sister Dorothy who married into the Marriage milling family of Chelmsford - and a grandson of one of his brothers.

To see the Newman family grave, newly restored, walk ten metres south from the west door of the church - the memorial is easily identified, being the cleanest and whitest in this area.

Colin West



The Churchwardens would like to express their gratitude to Colin West for causing this grave to be restored. *DS + BW*

The Prayer Tree

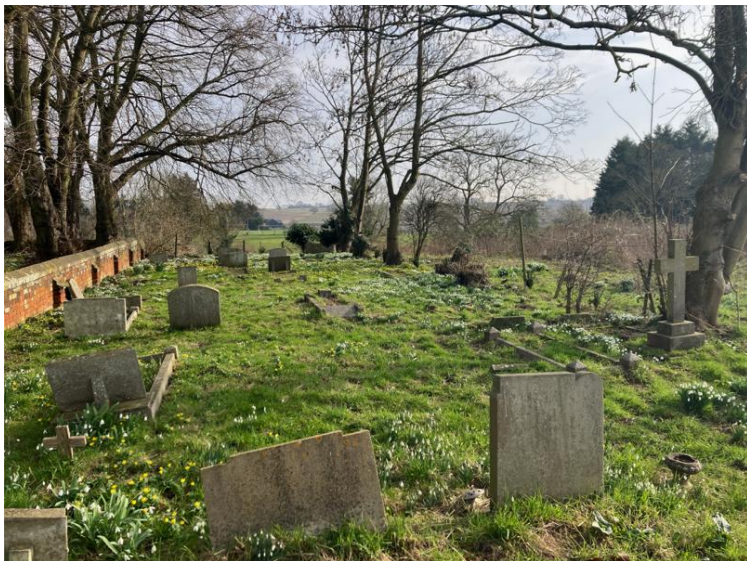
Some of you may already be aware that our church now has a Prayer Tree.



This is a resource for all visitors to the building to use for any prayer requests. The tree is in the North Aisle (turn left on entering and it is on the far window sill next to the Quiet Corner Altar Table). Your prayers can be anonymous or named.

Please take a paper leaf from the jar and write your request. These prayers will be included in our regular church Service prayers.

Flowers in the Churchyard Extension



July update



The redrafting of the Neighbourhood Plan is (finally) nearing completion and now reflects the (very) large volume of comments we received. We have been waiting for some key research to be completed before we finish our draft. We aim to produce what is called our 'Regulation 15' draft for approval by Parish Councils during August, so we can submit to Braintree District Council (BDC). BDC will do a consultation, send the Plan for Inspection and then it comes back to the community for a referendum. This draft will be published on our website <https://www.fw-np.org/community>

The Plan now includes the results of our 'Valued Landscape' study which found that two-thirds of our area satisfied the criteria for designation. The idea of a 'Valued Landscape' can be important in planning applications. This does not mean that non-designated areas are not important to us all, just that they do not quite get over the line to meet the Landscape Institute's strict criteria. We would like to thank everyone for their fantastic help in gathering evidence of why residents and visitors alike find our area so amazing. Information about local artists, writers and nature recovery can be found on the Neighbourhood Plan and Finchingfield Guildhall websites

<http://www.finchingfieldguildhall.org.uk/>

We have also just found out that our submission for the Airbase's inclusion in the Local Nature Recovery Strategy (LNRS) was successful. The Airbase is now defined as a 'Strategic Opportunity'. According to the LNRS document <https://essexnaturepartnership.com/wp-content/uploads/2025/07/lnrs-june-2025.pdf>. This is important in several ways:

- Provides information that may be a 'material consideration' in the planning system
- Helps prioritise areas for nature recovery
- Highlights key areas that development footprints should avoid where possible to maintain opportunities for habitat creation.

Research concerning the possible designation of the Airbase as a Conservation Area (Action 5 of the Neighbourhood Plan) and discussions with the Home Office regarding an Airbase Master Plan (Action 14 of the Neighbourhood Plan) are ongoing.

The Neighbourhood Plan Team also helped Finchingfield and Wethersfield Parish Councils submit very detailed responses to BDC's Local Development Plan review. This includes a number of local proposed development sites (which were rejected in June) and the Airbase (which will be debated by BDC on 24th September).

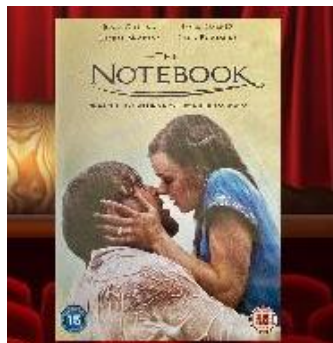
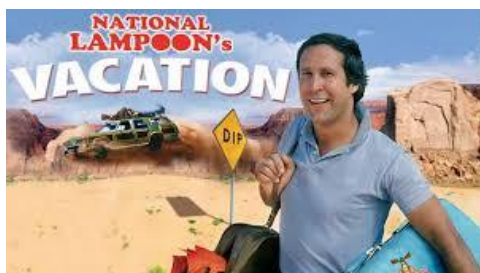
We continue to work with Finchingfield and Wethersfield Parish councils to put in place the rest of the 14-point Action Plan in our Neighbourhood Plan that addresses some of the concerns you told us about last Autumn, such as footways, public transport, and danger points.

If you have any questions, please email the NPT at fwnpnteam@gmail.com, contact us via Facebook or check out our website <https://www.fw-np.org/>.

WETHERSFIELD VILLAGE HALL CINEMA NIGHTS 2025

Friday 8th August

Friday 19th September



Doors open 6:30pm Film Starts 7pm
Tickets Fee £5 cash or card Raffle £1
Bar and snacks available before and interval
Ticket Enquiries 07304 360410

Flowers for the August Bank Holiday
In Finchingfield Church

“In loving memory”



Following the wonderful response we received last year, we are delighted to announce that we are decorating the church again for the Bank Holiday weekend and following few days, with flowers on pedestals and in window displays.

These will be in memory of loved ones and dedications & donations are most welcome. Anyone wishing to contribute to the cost of these flowers in memory of loved ones can do so by dropping off a donation into the box provided at GW Hardy & Son in Finchingfield, who have very kindly agreed to collect these for us.

Please remember to include the names of loved ones and your name with a donation in a sealed envelope.

And above all, please come along to visit the church from
23-25 August 10am-4pm
to enjoy the arrangements!

Entry is free.
Donations welcome.

All enquiries:
Catherine Naunton – 07749811830 or Linda Turner - 01371 810542



WETHERSFIELD FLORAL ART

(NAFAS AFFILIATED)

IS CELEBRATING ITS



GOLDEN ANNIVERSARY



JOIN US FOR A SPECIAL EVENING

WEDNESDAY 24 SEPTEMBER, 7.30 PM

DAVID THOMSON

NATIONAL DEMONSTRATOR

BRINGS US

'A FLORAL CELEBRATION'

WETHERSFIELD VILLAGE HALL, THE GREEN,

WETHERSFIELD, BRAINTREE CM7 4BS

TICKETS AVAILABLE IN ADVANCE FROM

Julia Broad, 01371 851422/07712 674929/e-mail :

broad.julia@yahoo.co.uk



WETHERSFIELD CLUB

(CAMRA North West Essex Club of the Year 2025
CAMRA East Anglia Regional Club of the Year 2024)

WE ARE NOW OPEN ON THURSDAYS!!

MONDAY	5.00 - 11.00 PM
TUESDAY	5.00 - 11.00 PM
	Ladies night (gents welcome too!)
	Scrabble, chess, cribbage
WEDNESDAY	5.00 - 11.00 PM
THURSDAY	5.00 - 10.00 PM
FRIDAY	5.00 - 12.00 PM
SATURDAY	4.00 – 9.00 PM (later with an event/)
SUNDAY	4.00 – 9.00 PM

Newly refurbished pool table, recovered snooker table and
new dart boards available every evening we are open

(Event permitting)

Follow our Facebook page for more detailed
information on upcoming events

WETHERSFIELD VILLAGE SHOP

OPENING HOURS, EFFECTIVE FROM MONDAY 10TH JUNE

	MORNING	AFTERNOON
MONDAY	10 - 1	2 - 4
TUESDAY	10 - 1	2 - 4 & 6 - 8
WEDNESDAY	10 - 1	CLOSED PM
THURSDAY	10 - 1	2 - 4
FRIDAY	10 - 1	2 - 4
SATURDAY	10 - 1	CLOSED PM
SUNDAY & BANK HOLIDAYS	10 - 11	

St. Mary Magdalene Church, Wethersfield
COFFEE AND CHAT



in Church

10.30am – 12 noon

Saturday 16th August 2025

Meet up with old friends, make some new.

ALL WELCOME. NO CHARGE.

+++++



A special Children's Church

meeting in preparation for the new school year

Sunday 31st August 3pm – 4pm

in **Wethersfield Church**

Bring along your school bag for blessing and enjoy some craft activities, stories, songs and refreshments

All ages welcome

No charge

For further details contact Sarah Pilgrim. Tel: 07788411360

email: pilgrim511@btinternet.com

CHRISTMAS SHOEBOXES

For August Link to Hope requests we are collecting this month for Stationery e.g. pencils, rubbers, sharpeners, crayons, rulers, drawing pads or writing notebooks, calculators, notelets.

These can be left in the church.

MOBILE LIBRARY SERVICE

Mobile Library 2 visits Wethersfield **every 3 weeks**

(Excluding Good Friday, Christmas Day, Boxing Day, New Year's Day or Bank Holidays.)

NOW on

MONDAY mornings 10.40am to 11.10am

It can be found parked in the High Street or at the Village Hall

Next visit date: - MONDAY 18th AUGUST 2025

MONDAY 8th SEPTEMBER 2025

ALL WELCOME and FREE to ALL!

STAMPS

for

Farleigh Hospice

Thank you to all those who have been saving their used postage stamps and popping them in the tub on the table in Wethersfield church.

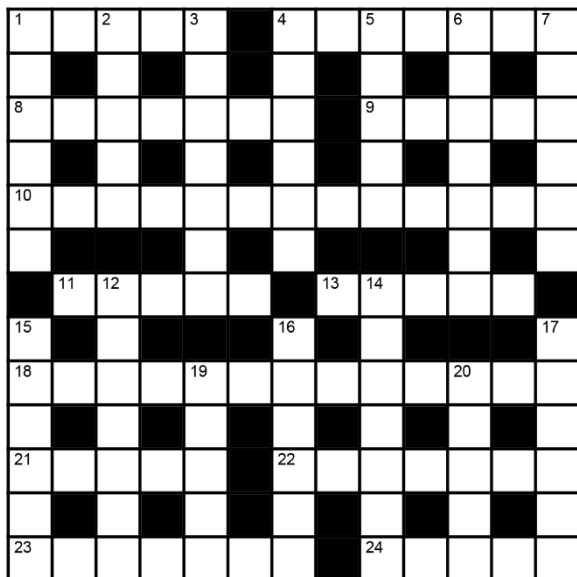
Old and new styles welcome as are those from all countries.

PLEASE KEEP COLLECTING!

Thank you



Crossword 90 by Robert Burrows



Across

- 1 Burning (5)
- 4 Bulging eyes (3-4)
- 8 Retirement salary (7)
- 9 Reasoning ability (5)
- 10 Domesday Book, Essoberiam Soberia (5-8)
- 11 Southpaw (5)
- 13 Incensed (5)
- 18 Essex Hamlet (8-5)
- 21 African antelope (5)
- 22 Arch of coloured bands (7)
- 23 Wooden lattice (7)
- 24 Ungainly (5)

Down

- 1 Add (6)
- 2 Within (5)
- 3 A significant appellation (7)
- 4 American cloak (6)
- 5 Sign of life (5)
- 6 Curdled milk (7)

- 7 Metrical unit (6)

- 12 Better (7)
- 14 Support system (7)
- 15 Online newsgroup system (6)
- 16 Loves (6)
- 17 No matter what (6)
- 19 In any way (2,3)
- 20 Arm joint (5)

Cryptic Across

- 1 Burning if Rae is organised (5)
- 4 Sailor-man, D with bulging peepers (3-4)
- 8 Government support opens in dispute (7)
- 9 Clog I break, with good reason (5)
- 10 Thorn in hose, Ruby? Terrible village (5-8)
- 11 Sinister person (5)
- 13 Very angry with IRA

- terrorist (5)

- 18 West garden's NE! Strange village (8,5)

- 21 Some bunny, a lame antelope (5)

- 22 Spectrum in the sky (7)

- 23 Tillers sadly need garden support (7)

- 24 Awkward, like bonfire night man? (5)

Cryptic Down

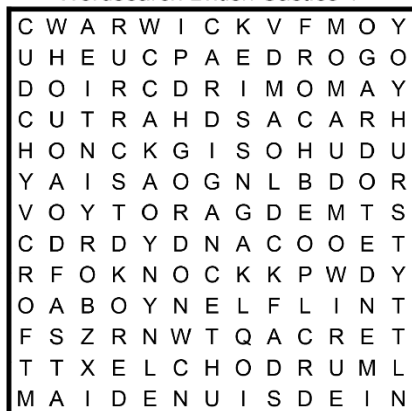
- 1 Attach the broken pen pad (6)
- 2 Headless law-breaker inside (5)
- 3 Descriptive word, the piet maybe (7)
- 4 No chop for this garment (6)
- 5 E Plus, sadly, but essential for life (5)
- 6 Hug Tory to get milk product (7)
- 7 Poetic foot (6)
- 12 Late, Vee? Maybe lift up (7)
- 14 Fixing the guide ropes? (7)
- 15 Employ ten to get search engine (6)
- 16 Worships Da, Rose? (6)
- 17 However, take any path (6)
- 19 By any means (2,3)
- 20 Terrible bowel in the arm! (5)

Solution Crossword 89



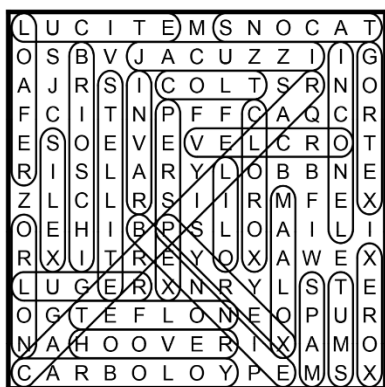
Wethersfield Puzzle Page 30

Wordsearch British Castles 4



Aboyne	Doon	Hurst	Odo
Acre	Dote	Keiss	Oer
Auchindown	Drogo	Knock	Piel
Cadbury	Drum	Leod	Red
Cardigan	Duns	Maiden	Roch
Chirk	Elcho	Maol	Uisdein
Clare	Fast	Maud	Warwick
Coity	Flint	May	York
Croft	Gordon	Mey	
Cutra	Hay	Moy	

Solution Trademark 4



Wordsquare 6-8

1	2	3	4	5	6
7					
8					
9					
10					
11					

The answers across and down match

Clues across

- Sacristy
- Meal course
- Blemishes
- Three-legged stand
- Go back on a promise
- Pertaining to yesterday

Clues down

- Sacristy
- Meal course
- Blemishes
- Three-legged stand
- Go back on a promise
- Pertaining to yesterday

Solution Wordsquare 5-8

1	2	3	4	5
W	H	E	E	L
6	H	A	L	V
7	E	L	F	I
8	E	V	I	C
9	L	E	N	T

The Mousetrap

A mouse looked through the crack in the wall to see the farmer and his wife open a package. "What food might this contain?" the mouse wondered. He was devastated to discover it was a mousetrap.

Retreating to the farmyard, the mouse proclaimed the warning: "There is a mousetrap in the house! There is a mousetrap in the house!"

The chicken clucked and scratched, raised her head and said "Mr.Mouse, I can tell this is a grave concern to you, but it is of no consequence to me. I cannot be bothered by it."

The mouse turned to the pig and told him "There is a mousetrap in the house! There is a mousetrap in the house!" The pig sympathized, but said "I am so very sorry, Mr.Mouse, but there is nothing I can do about it but pray. Be assured you are in my prayers."

The mouse turned to the cow and said "There is a mousetrap in the house! There is a mousetrap in the house!" The cow said "Wow, Mr. Mouse. I'm sorry for you, but it's no skin off my nose."

So, the mouse returned to the house, head down and dejected, to face the farmer's mousetrap alone.

That very night a sound was heard throughout the house - like the sound of a mousetrap catching its prey. The farmer's wife rushed to see what was caught. In the darkness, she did not see it was a venomous snake whose tail the trap had caught. The snake bit the farmer's wife. The farmer rushed her to the hospital and she returned home with a fever.

Everyone knows you treat a fever with fresh chicken soup, so the farmer took his hatchet to the farmyard for the soup's main ingredient. But his wife's sickness continued, so friends and neighbours came to sit with her around the clock. To feed them, the farmer butchered the pig. The farmer's wife did not get well; she died. So many people came for her funeral, the farmer had the cow slaughtered to provide enough meat for all of them.

The mouse looked upon it all from his crack in the wall with great sadness. So, the next time you hear someone is facing a problem and think it doesn't concern you, remember: when one of us is threatened, we are all at risk. We are all involved in this journey called life. We must keep an eye out for one another and make an extra effort to encourage one another. Each of us is a vital thread in another person's tapestry.