



# TROWSE VILLAGER

AUTUMN  
2025



# St Andrew's Parish Church – Trowse Newton

Facebook: @StAndrewsChurchTrowse

Vicar:	The Revd Rosemary Braby [revrosietrowse@gmail.com] 07719709600	
LLM (Reader):	Chris Sanham [readerchrissanham@yahoo.co.uk] 078010823149	
Churchwardens: standrewswardens@outlook.com	James Braby	01603 427165
	Emma Hunn	07702 112163
Church Treasurer:	Cathy Harvey	01508 499126
Organist:	Meryl Dempsey	
Church Flowers:	Sarah Toothill Cathy Harvey	
Facebook: <a href="https://www.facebook.com/StAndrewsChurch/?ref=page_internal">https://www.facebook.com/StAndrewsChurch/?ref=page internal</a>		
Web	<a href="#">St Andrew's Church, Trowse - A Church Near You</a>	

**The TROWSE VILLAGER is now a quarterly publication.**

**The next edition will be WINTER 2025/26.**

**Closing date for copy to be included is 17th November**

*All letters, articles and other contributions for the next edition of The Trowse Villager should be emailed to **newtrowsevillager@gmail.com** or handed in at the church.*

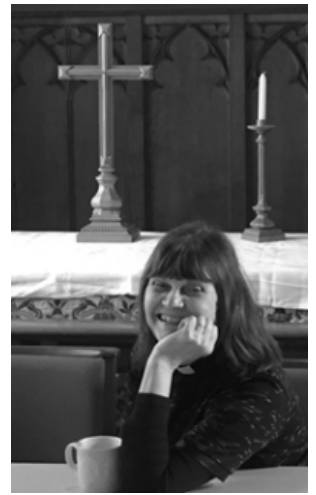
**Anyone wishing to advertise in the Trowse Villager please send enquiries to: [newtrowsevillager@gmail.com](mailto:newtrowsevillager@gmail.com) or phone 07719661976**

**Products and services advertised in this publication are not necessarily endorsed by the Editorial team.**

**Articles do not necessarily express the view of the Church or the Editorial team.**

## Rosie's Ramblings – Autumn 2025

Do you get fed up with the way we're being given the impression that AI is taking over our lives? It can feel quite scary at times, as if AI is actually becoming conscious and sentient (it's not!) and is aimed at making human beings redundant. Until a few years ago I worked as a translator, a job I loved as I find language endlessly fascinating. However, towards the end of my career I was compelled to make more and more use of "AI tools" and I didn't like that. Most of the documents I translated were of a technical nature, but I was quite alarmed and saddened by a news item on the radio recently, announcing that AI was now being used to translate novels.



Talking of novels and AI, I just pulled an ancient paperback from my shelves: one that was first published in 1965. Its pages are yellowing and turning slightly brittle, but I'm going to read it again and take the risk that it will fall apart. It's "The Tin Men" by Michael Frayn. Considering that it was published 60 years ago, it's quite prophetic. It shows that AI is really not that new; it's basically computing with increasingly powerful machines and burgeoning quantities of data. The book is hilariously funny. If you feel scared of being taken over by AI, do read it. Poking fun at the things that we're afraid of is one of the best ways of dealing with our fear, and Michael Frayn is a genius at doing just that, while acknowledging that there is a serious side to the technology. We need to remember that, but we also need to remember that humans can always pull the plug out if the machines start getting above themselves!

One of the most annoying ways that AI is used is for customer service. You must all have had this kind of experience. A few weeks ago I received a text purporting to be from my bank which just didn't ring true and I suspected a scam! I phoned the bank and eventually got a robotic-sounding voice asking me to explain my concern briefly. It was quite a complicated situation and I obviously didn't describe it as briefly as the AI thing wanted me to, as it repeated its request. Once again I rambled on about my concern and then the robotic voice asked, "Do you suspect fraud? If so, say "fraud!" "Fraud!" I yelled into the phone. Well, praise the Lord, Hallelujah! Within a few seconds a friendly-sounding lady with a northern accent said "Toni speaking, how can I help?" She sounded like a proper human being, but I asked suspiciously "You're not a chatbot are you?" Toni laughed and replied, "No I'm not a chatbot." Toni had no difficulty understanding my predicament and within a few minutes she'd sorted it all out for me. During our conversation I mentioned that I was a vicar, and Toni asked "Oh, have you seen 'Conclave'?" I told her I'd seen the film twice AND read the book twice! "Oh, one of my daughters loves reading," Toni told me and I soon learned that she had a daughter who was a teacher and another daughter who was a nurse. We carried on chatting for several minutes in quite a leisurely way and had a lovely conversation. So there's my advice, if you need to ring your bank just shout "Fraud!" into the phone and you may get to speak to Toni or another human being.

There you are – two book recommendations: "Conclave" by Robert Harris and "The Tin Men" by Michael Frayn. The blurb on the back of the latter reads: "At the William Morris Institute of Automation Research, happy days are spent programming computers to carry out menial tasks such as writing newspapers, watching sports and saying prayers."

Well, I'm not intending to hand my vicarly duty to say my prayers over to an AI chatbot! Prayer is a very human activity which goes on constantly at St Andrew's Church, in various ways. I could go on and on about it... but I've already written too much, so I'll conclude now by saying that you will always find a warm welcome at any of our services and events, and if you would like us to pray for you, we will gladly do so

## CHURCH SERVICES AND EVENTS FROM SEPTEMBER TO DECEMBER

Sunday 7 <sup>th</sup> September 12 <sup>th</sup> Sunday after Trinity	10.45 am 3.00 pm	Holy Communion Afternoon Service
Saturday 13 <sup>th</sup> September	All day	Sponsored Bike Ride/Stride  in aid of Norfolk Churches Trust
Sunday 14 <sup>th</sup> September 13 <sup>th</sup> Sunday after Trinity (Holy Cross Day)	10.45 am	Holy Communion
Saturday 20 <sup>th</sup> September	12 noon – 2pm	
Sunday 21 <sup>st</sup> September 14 <sup>th</sup> Sunday after Trinity	10.45 am	Holy Communion followed by Harvest Lunch
Sunday 28 <sup>th</sup> September 15 <sup>th</sup> Sunday after Trinity	10.45 am	Service of the Word
Sunday 5 <sup>th</sup> October 16 <sup>th</sup> Sunday after Trinity	10.45 am	Holy Communion N.B. NO EVENING PRAYER
Sunday 12 <sup>th</sup> October 17 <sup>th</sup> Sunday after Trinity	10.45 am	Holy Communion
Sunday 19 <sup>th</sup> October 18 <sup>th</sup> Sunday after Trinity	10.45 am	Holy Communion
Saturday 25 <sup>th</sup> October	12 noon – 2pm	
Sunday 26 <sup>th</sup> October Last Sunday after Trinity	10.45 am 12.15 pm	Holy Communion Christening

### OPEN CHURCH WEDNESDAYS

The church is open on Wednesdays from 11.30 am to 2 pm.

Everyone is welcome to call in for a chat and a coffee,  
to say a prayer and light a candle, and find a listening ear.

Relaxation and Quiet Meditation at 1 pm.



Sunday 2 <sup>nd</sup> November 4 <sup>th</sup> Sunday before Advent	10.45 am 3.00 pm	Holy Communion Evening Prayer
Friday 7 <sup>th</sup> November	10 am to 3 pm	RETRO FLOWER FESTIVAL
Saturday 8 <sup>th</sup> November	10 am to 3 pm	RETRO FLOWER FESTIVAL
Sunday 9 <sup>th</sup> November  REMEMBRANCE SUNDAY	10.45 am 12 noon to 3pm	Holy Communion RETRO FLOWER FESTIVAL
Sunday 16 <sup>th</sup> November 2 <sup>nd</sup> Sunday before Advent	10.45 am	Holy Communion
Saturday 22 <sup>nd</sup> November	12 noon – 2pm	
Sunday 23 <sup>rd</sup> November CHRIST THE KING	10.45 am	Holy Communion
Sunday 30 <sup>th</sup> November ADVENT SUNDAY	10.45 am	Holy Communion
Saturday 6 <sup>th</sup> December	3.00 pm	FAREWELL CONCERT by HEXACHORDIA EARLY MUSIC ENSEMBLE
Sunday 7 <sup>th</sup> December 2 <sup>nd</sup> Sunday of Advent	10.45 am 3.00 pm	Holy Communion Advent Service of Light
Friday 12 <sup>th</sup> December	6.30 pm	GLORY! Christmas Show with May's Performing Arts
Saturday 13 <sup>th</sup> December	6.30 pm	GLORY! Christmas Show with May's Performing Arts
Sunday 14 <sup>th</sup> December 3 <sup>rd</sup> Sunday of Advent	10.45 am	Holy Communion

## WEDNESDAYS IN ADVENT

On Wednesdays 3<sup>rd</sup>, 10<sup>th</sup> and 17<sup>th</sup> of December at 12.00 noon  
Lunch of Delicious Homemade Soup followed by Discussion -  
ALL WELCOME!



## Trowse with Newton Parish Council

Information about the Parish Council and the village can be found on our website <https://trrowseparishcouncil.norfolkparishes.gov.uk>; in our notice boards (by the bus stop on The Street, and the junction with Kirby Rd) and on our Facebook page (Trowse with Newton Parish Council). You can contact our Clerk, Kate Leggett, on 07899798853 or by e-mail [trrowsepc@outlook.com](mailto:trrowsepc@outlook.com).

All meetings are held monthly in the Manor rooms (The Street), and are open to the public. Personnel & communications, Open spaces & Property, on the 2<sup>nd</sup> Monday of the month, Finance and Full Council on 3<sup>rd</sup> Monday

Our monthly newsletter is delivered to households in the village and can also be found on our website, in notice boards and in the Manor rooms. We rely on a Team of volunteers to do this, so if you're interested in helping please let Kate know.

### 2025 Council meeting dates

**Personnel & Communications** (start 18:30), **Open Spaces & Property** (start 19:15)  
Meetings are ordinarily held on the Thursday before Full Council

		8 <sup>th</sup> September
13 <sup>th</sup> October	10 <sup>th</sup> November	8 <sup>th</sup> December

**Full Council meetings** – (start 19:15), **Finance** (start 18:30)  
Meetings are ordinarily held on the 3<sup>rd</sup> Monday of the month

		15 <sup>th</sup> September
20 <sup>th</sup> October	17 <sup>th</sup> November	15 <sup>th</sup> December

### Councillors, and Committee membership details

Councillor	e-mail	Committee(s)
Heather Bowers (Chairperson)	<a href="mailto:hbowers@trrowse-pc.co.uk">hbowers@trrowse-pc.co.uk</a>	Personnel & Communication, Finance
Paul Greenizan	<a href="mailto:pgreenizan@trrowse-pc.co.uk">pgreenizan@trrowse-pc.co.uk</a>	Personnel & Communication,
Ann Greenizan	<a href="mailto:agreenizan@trrowse-pc.co.uk">agreenizan@trrowse-pc.co.uk</a>	Open Spaces
Morgan Haynes	<a href="mailto:mhaynes@trrowse-pc.co.uk">mhaynes@trrowse-pc.co.uk</a>	Finance (Chair), Open Spaces
Duncan Price	<a href="mailto:priceintrowse@gmail.com">priceintrowse@gmail.com</a>	Open Spaces
Jordon King	<a href="mailto:jking@trrowse-pc.co.uk">jking@trrowse-pc.co.uk</a>	Finance
Guy Owen (Vice Chair)	<a href="mailto:gowen@trrowse-pc.co.uk">gowen@trrowse-pc.co.uk</a>	Finance, Open Spaces
Clive Cartner	Appointed in February 2025	

Clerk - Kate Leggett. Contact [trrowsepc@outlook.com](mailto:trrowsepc@outlook.com); 07899798853.



# News from Trowse Manor Rooms – Your Village Hall

Things have been busy in the Manor Rooms recently with some changes in the Manor Rooms Management Committee and a few events to report back on. We also have a date for the AGM, which is Friday 18 September 2025, 7pm

Firstly, we welcomed two new members to the Management Committee in April – Antonia Coonan and Leesa Barrell, who joined Nicky Barnes (Chair) Paul Greenizan, Kathy Self and since last AGM, Steph Ross-Wagenknecht and myself Marion Catlin. The treasurer for the last few years was non-trustee volunteer Jacky Harrop.

Since July, both **Jacky** and **Kathy** have stepped down after several years of sterling service – between them having spent hundreds of much-valued volunteer hours on the admin of the Manor Rooms. The treasurer role has been taken up by Steph Ross-Wagenknecht, and Leesa Barrell is acting secretary until the AGM. So the current committee is **Nicky (chair), Paul (vice-chair), Steph (treasurer), Leesa (acting secretary), Antonia (fundraising), Marion (communications)** and all trustees have been working together on events

## The Trowse Manor Management Committee AGM

The date has been set for 7pm **Thursday 18 September** at the Manor Rooms, all welcome. Applications for new members will be considered, and especially welcome is offers of occasional volunteers to help us to run events and maintain the building.

## New website for the Manor Rooms

One of our tasks is to raise awareness of the Manor Rooms and its activities. To help that, we are building a new website to show forthcoming events and historical information. The web address is [www.trowsemanorrooms.org.uk](http://www.trowsemanorrooms.org.uk) and we also have a new Facebook page. Both are building in content so please be patient but check back from time to time.

## Dogs in the Manor Rooms

We also decided on a trial run of relaxing the rules around bringing dogs into the manor Rooms and decided on a six month trial to see how it goes. Dogs tend to be a mixed reaction subject, with some people very much in favour and others more cautious about being around dogs and using the same space. We have posted the new rules in the Manor Rooms window – basically allowing well-behaved dogs in when we run events.

## Trowse Manor Rooms events

We have had some successful events recently. Following on from the **VE Day celebrations** when we opened a vintage tea room, kindly managed by Libby Peryer and her team, two film showings and displays of wartime memorabilia.

This was followed in June by a flamenco concert by Trowse Millgate musician Firdevs Eke on piano and her friend Emre El Turco, a Turkish/Spanish flamenco guitar expert. Emre ran a guitar workshop followed by a concert with Firdevs, which was a sellout. The Manor Rooms was packed and we also sold refreshments to raise a little extra for the charity. It was good to see the room full and people enjoying the music in spite of the heat and if you need piano lessons, Firdevs is the person to ask.



More recently we opened the Manor Rooms again as a tea room for the **Trowse Summer Vibes Fete** which took place on the Common. With the **Trowse Model Village Crazy Golf** (made by Trowse History Society members Chris Bowers and Peter Schindler) which proved to be very popular, people could enjoy a cuppa and a chat on the bowling green. We had many donations of wonderful cakes and some great volunteer help in the kitchen, raising some very useful funds for the Manor Rooms. This has led to occasional opening of the Manor Rooms to serve tea and coffee while people play golf – look out for dates on the website [www.trowsemanorrooms.org.uk](http://www.trowsemanorrooms.org.uk)



## We need your help!

The village has grown, and the demographic changed and now, there are many people that are not so aware of the life of the village and especially people don't always realise that the Manor Rooms is your village hall. The Manor Rooms exists to serve the community and the Manor Rooms Management Committee (MRMC) is here to make that happen. We are planning more events and tea rooms and we need to know what you want most out of your village hall. We know that there is little for young people to do in the area – could you run a youth club? Or a games night? A choir? A theatre group? Do you have ideas for activities? Can you run a fundraiser? We need people to get involved!

We also need to spread the word that the Manor Rooms are available to hire. If you have an idea, we can help to make it happen – just email us at [events@trowsemanorrooms.org.uk](mailto:events@trowsemanorrooms.org.uk)

We are looking forward to a new and busy future for this valuable village asset – please help us animate your village hall.

### Did you know...

- That Trowse Manor Rooms is your village hall right in the middle of the village?
- That the Manor Rooms is run by the Manor Rooms Management Committee which is a registered Charity?
- That the Manor Rooms is owned by the Parish Council for the benefit of its villagers?
- That you can hire the Manor Rooms for £12 an hour if you live in Trowse?
- That we would love to have your help and support by getting more people involved in running activities
- That we are planning film nights, concerts, arts activities and more to animate the Manor Rooms for the village



## Enjoying our churchyard

On Sunday 20<sup>th</sup> July we welcomed Archdeacon Keith who blessed our new prayer walk. It has been created for everyone to enjoy the natural environment around our church and sit amongst scented and sensory plants. We hope it will be a place for reflection, peace and time out from our busy world. Anyone is welcome to walk around the grass path that winds around the stopping places and spend a few minutes reflecting on the words. The churchyard is an asset for the village, not just for the churchgoers so please enjoy this ancient unspoilt area of nature.



## DATE FOR YOUR DIARY:

## *FLOWER FESTIVAL*

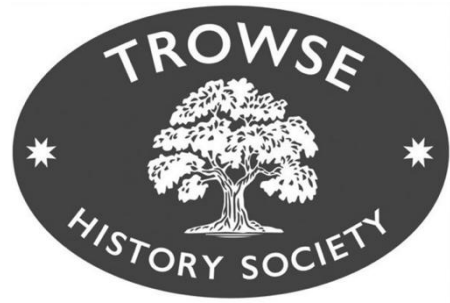
St Andrew's Church will be holding a flower festival on 7<sup>th</sup>, 8<sup>th</sup> 9<sup>th</sup> November 2025 on the theme of Retro and Vintage. In addition to the flower arrangements we hope to have displays of retro toys and games, ephemera, books etc. and, hopefully, some vintage clothes.



The festival is free to enter with donations welcome. The proceeds will be going towards our heating and toilet project. Please help us to make this a fun and interesting event at a time of year that can seem grey and gloomy. Homemade soup lunches will be available at a reasonable price. Donations in memory of loved ones will be very welcome and used to create our flower arrangements. We will include their name in our brochure, if requested.

Contact Sarah 07920 387655.

# FIFTIES



# FOOD



LIFE,  
ROUTINE &



## DIET IN 1950S TROWSE

An illustrated presentation based on interviews  
with local people.

Memories of Trowse in the 50's *and* 60's including the village shops,  
local producers and the lives of the eaters.

Upstairs room in The White Horse PH

Friday 12<sup>th</sup> September 2025.

7.00pm

Entry £4.00 cash,  
on the night



Have you heard? There are **only** 40 spaces available! First come, first served!



## **Gillian Martin 1937 - 2025**



If you were married in Trowse Church between 1995 and 2024, or attended a wedding, Christening or funeral there it is very likely that the singing would have been accompanied by Gillian (or Gillie or Gillyflower, as she was affectionately known) on the church organ, a role she continued to perform, along with playing for weekly services, until a few months before she sadly passed away in May. Music had been in Gillie's life from the beginning. As a child she learnt to play the piano and violin and a highlight at fifteen was an appearance at an early Kings Lynn Festival, one of two young singers

chosen to illustrate a talk on East Anglian Folk Songs given by Ralph Vaughan Williams, who commented that she sang with 'absolute simplicity', just as he liked folk music to be sung. She went on to study at the Trinity College of Music in London and gained qualifications from the Royal College of Music and the Royal Academy of Music, along with a teaching diploma back at Trinity. She taught music in London and Maidstone, where she became head of the music department at a girls' Grammar School.

Gillie recalled her London years with fondness but in the mid-1960s she found herself unexpectedly back in Norfolk caring for her recently widowed father.

In the decades that followed, through retirement and beyond, Gillie threw herself into a myriad of musical activities, organising, directing, conducting, playing, accompanying and singing at concerts and other events all over Norfolk. She also taught piano and violin to students young and not so young from her lovely music filled home, designed by her father and overlooking the beautiful Tas Valley. In deserved recognition of her services to music in the county she was, in 2019, delighted to be invited to and had a glorious time at a Buckingham Palace Garden Party.

When Gillie first came to us as an organist she was already playing at Stoke and Dunstan churches and it wasn't unusual for her to play at all three churches on a Sunday morning, rushing away from the first two immediately after the last note had been played on the last hymn. We moved our start time (hence the unusual 10.45 am!) to give her some breathing space but she never appeared ruffled.

In her 70<sup>th</sup> year she took herself off to New Zealand for a month and had a marvellous time visiting relatives and exploring, but she was as happy at home with her succession of much-loved rescue cats, Billy Beetle the parrot and all the birds and other wildlife that found their way into her garden. And thanks to her wonderful niece Caroline she was able to spend her last days by a window to that garden with friends popping in to say farewell and play a tune or two.

Gillie was very much one of a kind who knew lots about lots of things, loved playing with words (she loved a pun!) and had the quirkiest sense of humour. And although she was heading for ninety she never lost her childlike sense of fun or wonder and never worried about playing the occasional duff note. We miss her playing, of course, but mostly we miss her wisdom, appreciation, loyalty and friendship.

# A Message from Ben Goldsborough MP

## Keeping Our Rural Roads Safe

I know that for many in Trowse, the speed and volume of traffic on local roads is more than just an irritation – it's a genuine safety concern. White Horse Lane, in particular, has been raised with me several times as a hotspot for drivers travelling far too quickly. It's not only unsettling for pedestrians, cyclists, and families, but it also risks real harm.

On top of that, many residents have told me how challenging it can be getting in and out of the village on match days in Norwich. The surge of cars heading towards the city's stadium puts additional strain on local routes, causing congestion, frustration, and, too often, unsafe driving behaviour as people rush to get to or from the game.

It's clear that these are not isolated issues – they are part of a wider picture of rural road safety that needs urgent attention. That's why I have launched a Rural Road Safety Review for South Norfolk. The aim is simple: to gather the experiences, ideas, and concerns of local people, and turn them into a clear set of recommendations.

The review will culminate in a report that I plan to publish in January 2026. This report will be sent to Norfolk County Council, Norfolk's Police and Crime Commissioner, and the Future Roads Minister. My call will be for strengthened rural road safety strategies that recognise the unique challenges villages like ours face.

Too many of you have told me that you feel nothing changes when you raise these concerns. I agree – it's not good enough. The statistics are moving in the wrong direction. Across Norfolk, road collisions and fatalities are rising, and we cannot accept this as inevitable.

Your voice is vital to making this case. The more people take part, the stronger our argument will be when we present our findings. If you can, please take a few minutes to fill out the survey at:

<https://www.surveymonkey.com/r/SouthNorfolkRoads>

Whether you're worried about speeding in your street, dangerous junctions, parking issues, or other road safety concerns, your experiences will help shape the final recommendations.

If you need help with any other issue, or want to raise something directly with me, you can get in touch:

Email: [ben.goldsborough.mp@parliament.uk](mailto:ben.goldsborough.mp@parliament.uk) (please include your full postal address and any reference numbers for casework you've previously raised)

Phone: 01603 570332 to speak to a member of my team here in South Norfolk

Together, we can push for the safer roads our communities deserve.

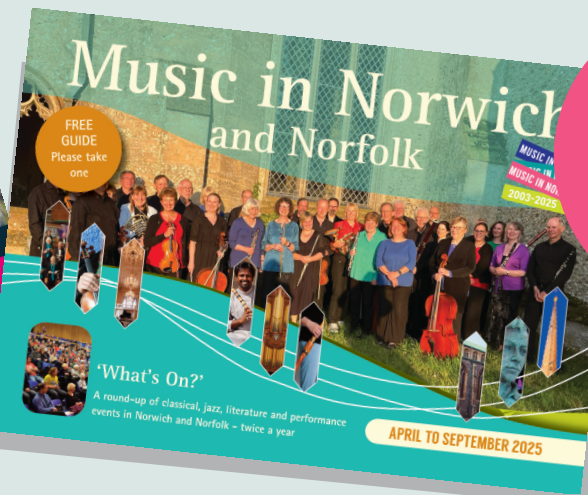
Yours faithfully,

Ben

Ben Goldsborough MP

Member of Parliament for South Norfolk





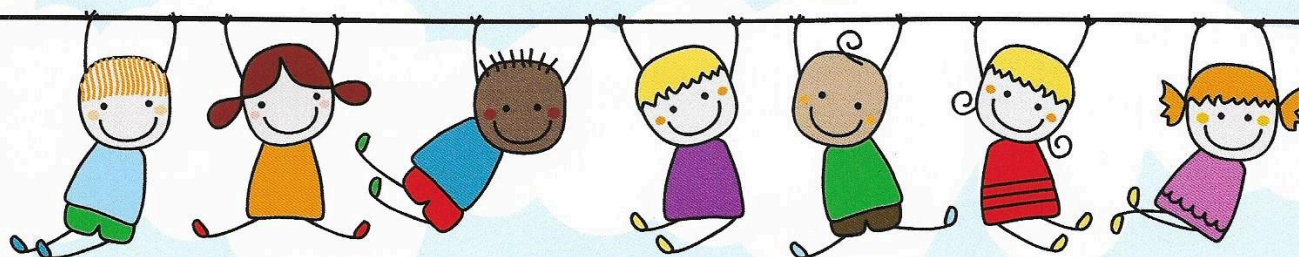
Pick up a  
free guide to  
arts and  
music  
What's On



To order by post  
scan the QR

Free guides to festivals, exhibitions and concerts in Norwich and Norfolk. Printed booklets to pick up free from the Manor Rooms, Crown Point Tavern, the church or River Green in Trowse, the Egg Shed (Trowse Millgate) and many venues and arts info racks in the city, by post for the cost of the stamp, and downloadable as a pdf – see [www.artinnorwich.org.uk](http://www.artinnorwich.org.uk) for details.

Find out more at [www.artinnorwich.org.uk](http://www.artinnorwich.org.uk) or [www.musicinnorwich.org.uk](http://www.musicinnorwich.org.uk)



## Trowse Baby and Toddler Group

**Mondays (term time) 10:00-11:30**

**Trowse Manor Rooms, Trowse NR14 8ST**

**£3 per child / £1 per extra adult or child**

**Babies 6 months or under free**

**Come and Join the fun!**

For parents, carers and little ones from newborn to 4 years of age.

Sessions include free play, craft activities and music / singing.

Tea, coffee and cake for the adults and a drink and snack for the children included!!

**To book or for more information  
please email:  
[trowse.babytoddler@gmail.com](mailto:trowse.babytoddler@gmail.com)**

# What's on at Trowse Manor Rooms Your village hall



THE STREET TROWSE NORFOLK NR14 8ST

## Monday

### Trowse Baby & Toddler Group

10 – 11.30am (term time) [trrowse.babytoddler@gmail.com](mailto:trrowse.babytoddler@gmail.com)

Currently available for afternoon hire

Parish Council & MRMCM Meetings 6.30-9.30pm

## Tuesday

Currently available for hire & viewings

## Wednesday

Currently available for hire & viewings

### Yoga & Relaxation with Donna

6.45 – 7.45pm - Donna - 07496 287370

## Thursday

### Pilates with Nikki

9.15-10.15am

Nikki 07905 415887 or [nikkiwhyte11@gmail.com](mailto:nikkiwhyte11@gmail.com)

### TPS Karate

3.30-4.30pm

Dan - 07908 703555

Currently available for evening hire

## Friday

Currently available for hire & viewings

## Saturday

### Pilates with Nikki

9.30-10.30am

Nikki 07905 415887 or [nikkiwhyte11@gmail.com](mailto:nikkiwhyte11@gmail.com)

## Sunday

### Gong Yoga Session

4-6pm  
(monthly)

Julie 07849012213 or [yogawithjulie@outlook.com](mailto:yogawithjulie@outlook.com)

## Saturdays & Sundays

Available to hire for parties & any ad hoc events

Please contact

Glen on 07740 782850 or [glenself@me.com](mailto:glenself@me.com)

## Future social events at the Manor Rooms

For updates see our socials:

[www.trowsemanorrooms.org.uk](http://www.trowsemanorrooms.org.uk)

Facebook: [@Trowse Manor Rooms](https://www.facebook.com/TrowseManorRooms)

BlueSky: [@trowsemanorrooms.bsky.social](https://bsky.social/trowsemanorrooms)

And keep an eye on the Manor Rooms window for notices

Bowling Green now available to hire

Furniture Hire... Tables & Chairs





## THE MANOR ROOMS – TROWSE VILLAGE HALL

### NEW HIRE RATES

Activity	Rates of Hire from 1 <sup>st</sup> April 2025
Trowse Community Groups	£12.00 per hour
Charities (for fundraising activity)	£12.00 per hour
Private Commercial Lets	£15.00 per hour
Corporate Commercial Lets	£35.00 per hour (price held at 2023 rate)
Children's Birthday Parties (under 13 years of age)	£45.00 for 4 hours
Other Daytime Parties including teenagers	£55.00 for 4 hours (price held at 2023 rate)
Evening Parties	£110.00 for 4 hours (price held at 2023 rate)
Hire of green at the rear	£25 per hire

For booking information please contact:

Glen Self on 07740 782850 or

[glenself@me.com](mailto:glenself@me.com)

Manor Rooms Management Committee  
(Registered Charity No: 1095329)

# R.B. COPPING

## FUNERAL SERVICE

Independent Family Funeral Directors Since 1935

For Personal Attention with Dignity and Respect

Private Chapels of Rest

Memorials & floral tributes supplied

Pre-paid funeral plans available



125 The Street, Poringland, 56 Langley Road, Chedgrave,

Norwich, NR14 7RP

Nr Loddon NR14 6HE

Tel. 01508 494434

Tel. 01508 521159

[www.coppingfunerals.co.uk](http://www.coppingfunerals.co.uk)





## FROM THE REGISTERS



### BAPTISMS

*We welcome into the family of the church*

Ava Rose Hill  
6<sup>th</sup> July 2025

### WEDDING

*Warm congratulations to*

Andrew and Kathy Aldous  
21<sup>st</sup> June 2025



### FUNERAL

*We commend to the loving care of the Lord*

Gillian Mary Martin  
14<sup>th</sup> June 2025

Colin Douglas Pritty  
26<sup>th</sup> June



### MEMORIAL SERVICE

Revd Howard Rex Cresswell  
22<sup>nd</sup> August

## VJ Day 80

In May this year, events were held to mark the 80<sup>th</sup> anniversary of VE Day. The end of the war in Europe was indeed great cause for celebration, but VJ Day celebrations were much more low-key, and indeed members of the Fourteenth Army, *one of the main fighting forces in the Far East*, felt themselves to be the 'Forgotten Army'. At 12 noon on 15<sup>th</sup> August we honoured their memory at Trowse Church by ringing the bell, observing two minutes' silence and holding a short service of remembrance. Two of the four men on our WW2 war memorial died in the Far East, and Bishop Eric Cordingly, Bishop of Thetford in the 1960s, was chaplain to the Changi Prisoner of War Camp. The suffering endured by those people can scarcely be imagined. Members of the congregation told us of relatives who had served there and been Japanese prisoners of war, and we were pleased to be joined by friends from Whitlingham Park.

# AFTERNOON TEA WITH SPANISH GUITAR!

Our afternoon tea on Saturday 23<sup>rd</sup> August was a complete sell-out; indeed we sadly had to turn people away. The church looked lovely with white linen tablecloths, vases of flowers, bone china cake stands etc. Everyone who succeeded in getting tickets had an absolute treat: delicious sandwiches, home-made cheese scones and fruit scones with jam and cream, plus a variety of cakes fed the stomachs, while beautiful guitar music played by our friend Peter Turrell provided nourishment for our souls.



It made for a most relaxing, enjoyable afternoon so all the panicking beforehand was completely worth it! Many thanks to all who supported this event, which will also provide funds towards our heating and in-church toilet project. We're already looking forward to the next time.





# Retro Themed Flower Festival

FRIDAY, SATURDAY 7<sup>TH</sup>, 8<sup>TH</sup> NOVEMBER 10AM TIL 3PM  
SUNDAY 9<sup>TH</sup> NOVEMBER 12.30PM TIL 3PM

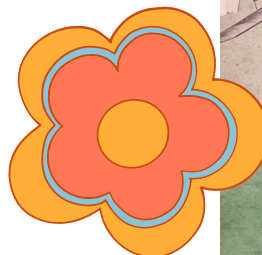
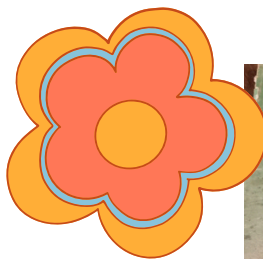


FREE ENTRY  
DONATIONS  
WELCOME TO  
RAISE FUNDS FOR  
HEATING AND  
TOILET PROJECT

## St Andrews Trowse

COME AND ADMIRE  
BEAUTIFUL FLOWER  
ARRANGEMENTS AND  
WANDER DOWN  
MEMORY LANE WITH  
DISPLAYS OF RETRO  
TOYS, UTENSILS,  
CLOTHES AND MORE

REFRESHMENTS AND LUNCHES  
AVAILABLE





# **Ethan's Pristine Window Cleaning Services**



**Window Cleaning  
Conservatory Roofs  
Gutters and Fascias  
UPC Cladding**

## **We are in your area**

**GET IN TOUCH TODAY**

**07507 705909**

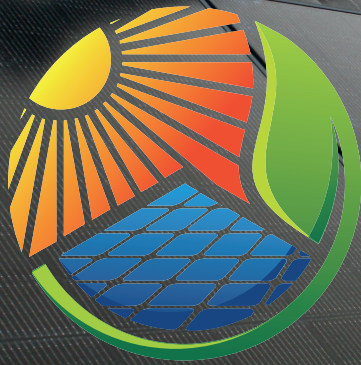
**/ otbc1999@mail.com**







**GivEnergy**®  
Approved Installer



We use top of the range **GivEnergy** products, (as recommended by E-on and Octopus) but at **value for money** prices!

# SunPro Solar

**Battery ready solar system  
10 445W high output panels  
GivEnergy Hybrid inverter**

**£4950**  
all inclusive  
fitted price

We prefer to survey in person, but rest assured we never **sell** on site - so no over-long stays or 'sales tactics'. A survey takes no more than 40 minutes, after which we return to the office and email your quote within 24 hours for you to consider in your own time.

**Sunpro Solar do not 'fit and run'.** Once the system is installed, we explain it all to you on the day - and return a week later to talk you through the app, help you upload documents for the Smart Export Guarantee and choose the best tariff for you. **Please don't hesitate to call our manned 24-hour helpline for any advice, assistance, or to book a survey.**

We recommend you get more than one quote, and we are confident we will stand out on price, service and quality of install. Make sure alternative installers are MCS accredited for **both** solar and batteries. If your installer is not MCS accredited for batteries, they cannot issue an MCS certificate for your whole system! Sunpro Solar will issue you an MCS certificate for your solar, and another for your battery.



Office: **01603 666037** • 24 Hour: **07900 211909**

[info@sunprosolar.co.uk](mailto:info@sunprosolar.co.uk)

The Boatyard, Whitlingham Lane Trowse, Norwich NR14 8TR

**[sunprosolar.co.uk](http://sunprosolar.co.uk)**







# Corton House

*Loving Care and Support*

**"My dad is a totally different man since coming to Corton House. He was lonely, now he is really happy and content."**


We are a not-for-profit care home for older people, with a Christian ethos, welcoming to all. Situated in delightful gardens, we offer en-suite rooms, freshly cooked meals and a varied activities programme. Get in touch to book your tour and find out more.

[www.cortonhouse.co.uk](http://www.cortonhouse.co.uk)

City Road, Norwich, NR1 3AP

01603 620119

[manager@cortonhouse.co.uk](mailto:manager@cortonhouse.co.uk)

 Search: Corton House Care Home



# M&M HEATING

LOCAL FAMILY BUSINESS

- GAS & OIL SPECIALISTS • BOILER SERVICING
- BREAKDOWNS & REPAIRS
- INSTALLATIONS & UPGRADES
- GAS SAFETY CERTIFICATES



mmheating9@gmail.com

Mark 07979 725868



Able  
Community Care  
Est. 1980



Live-in Care



Holiday  
Companion  
Care



Respite Care



Home from  
Hospital Care

Your Own Front Door...  
Priceless!

# Buying a Home?



Regulated by

**RICS**<sup>®</sup>



Make Sure You Know What You're Getting Into.

At Allen-Aldus Surveying, we provide RICS-accredited **home surveys** and **valuations** that give you the confidence you need when making property decisions.

- ✓ **Tailored to You** – We focus on your concerns and the property's unique aspects.
- ✓ **Clear, Jargon-Free Advice** – Understand exactly what you're dealing with.
- ✓ **Ongoing Support** – We call before the survey, update you on the day, and follow up after the report.

## Your Surveying Needs.

*Our Personal Commitment.*



*Allen-Aldus Surveying is an independent RICS regulated firm, carrying out residential Level 2 & 3 Home Surveys and Valuations.*



**Serving Norfolk & Surrounding Areas**

**w: [www.aasurveys.co.uk](http://www.aasurveys.co.uk)**

**e: [hello@aaasurveys.co.uk](mailto:hello@aaasurveys.co.uk)**

**m: 07586 599917**





Five highly trained hair stylists  
Many years' experience  
Ladies', Gents' and Children's styles available  
: Colour Technicians : Perm Specialists :



**SALONSIXTYTWO**

UNISEX HAIR & BEAUTY

*Telephone or E-mail for an appointment today*

Free Parking

Disabled Access

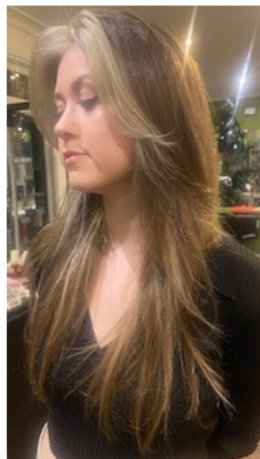
Air Conditioning

Salon SixtyTwo  
62 Sandy Lane  
Norwich  
NR1 2NR

[www.salonsixtytwo.co.uk](http://www.salonsixtytwo.co.uk)

01603 766991

[info@salonsixtytwo.co.uk](mailto:info@salonsixtytwo.co.uk)



 **NORWICH  
HEATING  
SERVICES**

bringing your boiler back to life

**BOILER AND  
CENTRAL  
HEATING  
SPECIALISTS**

**CALL 07830 829741  
for a FREE quote**

Email: [info@norwichheatingservices.co.uk](mailto:info@norwichheatingservices.co.uk)



[www.norwichheatingservices.co.uk](http://www.norwichheatingservices.co.uk)





## **Your Advert could be here,**

quarterly

for £32 (mono) or £50 (colour)

for a year.

For further Details Contact:

James at:

newtrowsevillager@gmail.com

Or Cathy at:

cathydharvey@rocketmail.com

### **Cooper Home Improvements**

#### **Carpentry Services**

- Doors . Internal / External
- Windows . Wood / UPVC
- Kitchen Fitting / Refurbishment
- Floors . Laminate / Wooden
- Flat Pack Assembly
- Skirting / Architrave
- Guttering . Fascia



#### **Double Glazing Repairs**

##### **Maintenance to Refurbishment**



- Replacement Sealed Units ←**
- Windows Hinges & Handles ←**
- Door Locks ←**
- Cat Flaps ←**

**City & Guilds Qualified**

#### **Free Estimates**

**Reliable, Reasonable & Recommended**

**Please Call David**

**For further range of services**

**01508 490551 or 07982 711499**

**carpentercooper@aol.com**

## **Maths Tuition**

**Looking for 1:1 teaching,  
from upper primary to A-Level?**

---

I tutor mathematics to help  
students develop confidence,  
excel in exams,  
and achieve their goals.

Call Gregg Bontly, B.Sc (Hons), MBA

on **07905 916 685**

[greggbontly@hotmail.com](mailto:greggbontly@hotmail.com)

## YELVERTON GARAGE LTD A146 LODDON ROAD

SERVICE – DIAGNOSTICS – AIR CON – MOTs

01508 492758

V.W. AUDI SPECIALISTS  
[www.vwaudinorwich.com](http://www.vwaudinorwich.com)



QUALITY LIGHT  
COMMERCIAL VEHICLE  
SALES

WITH FULL AFTER SALES SERVICE

01508 494464

[www.yelvertonvans.com](http://www.yelvertonvans.com)



Call, text, email for more info  
Martin@  
[housemartinrenovations.co.uk](http://housemartinrenovations.co.uk)

All home improvements,  
maintenance and renovations.  
Interior and Exterior

07769151073

## DKC PLUMBING Oil Boiler Specialists

- Oil Fired Boiler Servicing
- Boiler Breakdowns
- Boiler Repairs
- Oil Tank Repairs
- Radiator Power Flush
- General Plumbing
- Heating Systems
- Domestic & Commercial

Out Of  
Hours  
call outs  
available

Fully insured

Rated people

Google  
facebook

Yell.com.



95% of all  
breakdowns  
fixed within  
the first  
hour!!



Call today for a quote  
07375 995 198  
[www.dkcplumbing.co.uk](http://www.dkcplumbing.co.uk)

## M Wiseman Interior & Exterior Painter & Decorator

Tel: 01508 494602

Mob: 07941 699232

The Brambles  
3 Mill Close  
Poringland  
Norwich  
NR14 7JP



## Useful contact numbers and email addresses

### Emergency Numbers

#### Police, Fire or Ambulance Emergency 999

Police–Non Emergency Norfolk Constabulary.....101 ... [www.norfolk.police.uk](http://www.norfolk.police.uk)

Ambulance–Non Emergency East of England Ambulance Service .....0345 601 3733

.....[www.eastamb.nhs.uk](http://www.eastamb.nhs.uk)

NHS 111 Service

Fire Service–Non Emergency Norfolk Fire Service .....01603 810351

.....[norfolkfireservice.gov.uk](http://norfolkfireservice.gov.uk)

Electricity Emergencies Distribution .....0800 31 63 105 or 105 from mobile

.....[www.ukpowernetworks.co.uk](http://www.ukpowernetworks.co.uk)

Gas Leaks & Emergencies National Grid .....0800 111 999

.....[www.nationalgrid.com/uk/gas](http://www.nationalgrid.com/uk/gas)

Water Leaks Anglian Water.....0800 771 881 .....[www.anglianwater.co.uk](http://www.anglianwater.co.uk)

Samaritans Norwich Samaritans.....01603 611311.. [www.samaritans.org](http://www.samaritans.org)

Animal Emergencies RSPCA.....0300 1234 999 [www.rspcanorwich.org.uk](http://www.rspcanorwich.org.uk)

### General Information

Norfolk & Norwich University Hospital Main Switchboard.....01603 286286

..... [www.nnuh.nhs.uk](http://www.nnuh.nhs.uk)

Norfolk County Council Main Switchboard.....0344 800 8020 [www.norfolk.gov.uk](http://www.norfolk.gov.uk)

South Norfolk District Council Main Switchboard..... 01508 533633 or 0808168 2000

..... [www.south-norfolk.gov.uk](http://www.south-norfolk.gov.uk)

Trowse Parish Council.....07899 798853

Citizens Advice Bureau Norwich District Office .....National advice line **0800 144 88 48**

.....[www.norwichcab.org.uk](http://www.norwichcab.org.uk)

Trowse Primary.....01603 622485 . [www.trowseprimaryschool.co.uk](http://www.trowseprimaryschool.co.uk)

Framingham Earl High School.....01508 492547

.....[www.framinghamearl.norfolk.sch.uk](http://www.framinghamearl.norfolk.sch.uk)

Norfolk Library Service Poringland Library.....01508 494891 [www.norfolk.gov.uk](http://www.norfolk.gov.uk)

Norwich Millennium Library.....01603 774774 [www.norfolk.gov.uk](http://www.norfolk.gov.uk)

RSPCA Norwich Office.....01603 766001 [www.rspcanorwich.org.uk](http://www.rspcanorwich.org.uk)

NSPCC General Help & Advice.....0800 800 5000 [www.nspcc.org.uk](http://www.nspcc.org.uk)

Childline .....0800 1111 [www.childline.org.uk](http://www.childline.org.uk)

### Transport

Norwich Airport General Enquiries.....01603 411923

.....[www.norwichairport.co.uk](http://www.norwichairport.co.uk)

Norwich Railway Station General Enquiries .....0345 600 7245

.....[www.nationalrail.co.uk/stations/nrw/details](http://www.nationalrail.co.uk/stations/nrw/details)

Greater Anglia Customer Relations.....0345 600 7245 [www.greateranglia.co.uk](http://www.greateranglia.co.uk)

First Bus...<https://www.firstbus.co.uk/norfolk-suffolk/routes-and-maps/network-norwich>

***Should you find any of this information incorrect please inform the Editor***



# River Green

COOKERY SCHOOL & RESTAURANT

Part of the Trowse  
Community since 2011

Award winning plant based  
dining

Friendly, casual service

Range of vegan, organic, local  
and gluten free wines, beers  
and spirits

Internationally inspired cuisine  
using ingredients sourced from  
as close to home as possible

Seasonal produce in a  
constantly adapted menu, with  
all dishes available gluten free

Family friendly, and dog friendly  
too

5% Ecodiscount on food for  
customers arriving on foot or  
by bike

[bookings@rivergreenrestaurant.com](mailto:bookings@rivergreenrestaurant.com)

[www.rivergreenrestaurant.com](http://www.rivergreenrestaurant.com)

01603 622448

The Street, Trowse  
NR14 8AH

