

# IGHTHAM MAGAZINE

A sunset over the sea with a pier in the foreground. The sun is low on the horizon, casting a golden glow across the sky and water. The sky is filled with soft, orange and yellow clouds. The water is calm, reflecting the light from the sun. In the foreground, the dark silhouette of a pier with several posts is visible against the bright horizon.

**SEPTEMBER 2025**

**PUBLISHED FOR THE COMMUNITY  
BY ST PETER'S CHURCH**

**£1.00**



## Services in the Benefice in September 2025

### Ightham

### Wrotham

Sun 7 Sept	9am	Breakfast@Church	10:30am	Holy Communion with Healing Prayers
	6pm	Evensong		
Sun 14 Sept	10am	Holy Communion	9am	Breakfast Church
			10:30am	Service of the Word
Sun 21 Sept	10am	Service of the Word	10.30am	Holy Communion
	6pm	Evensong		
Sun 28 Sept	10am	Holy Communion	9am	Breakfast @ Church
			10:30am	Sung Matins

### WEDNESDAY MORNINGS AT IGHTHAM

3 Sept	10am	Holy Communion
10 Sept	10am	Morning Prayer
17 Sept	10am	Holy Communion
24 Sept	10am	Morning Prayer

### ST PETER'S NEWS

Ightham Parish Council is looking for a volunteer to manage the archive in the lower Village Hall. If you are interested in taking on this role, please contact the Parish Clerk: [ighthamclerk@gmail.com](mailto:ighthamclerk@gmail.com)

### INTERREGNUM UPDATE

Despite the disappointment following no applications to the last advertisement for our new Rector, the PCC are focused on keeping things running smoothly. Both PCCs

(Ightham and Wrotham) will be meeting with the Archdeacon and Associate Archdeacon in September to discuss when to readvertise the position amid the challenges of the low numbers of clergy affecting the Church of England more generally. Looking forward the PCC are making plans for the autumn including Harvest Festival and some new events for the young people, building on the informal worship at Breakfast@Church. Get in touch with Naomi, the Church Warden with any questions.



Now faith is confidence in what we hope for and assurance about what we do not see.

Hebrews 11:1



## Penny for your thoughts...

Ecclesiastes' well known quote "To everything there is a season. . .", sounds a little hollow these days. So many things

are 'without a time' – the disrupted weather seasons, unexpected and sudden traumatic world events and unplanned global political U turns. The extremely good news for September is that as always, it's a 'new' month with new opportunities, new ventures and new activities.

The even better news is that you can find so much of this 'newness' in our September Magazine. Whether it's volunteering afresh at St Peter's coffee shop; trying out Shipbourne Farmers' Market; joining U3A or the WI; or walking with the Ramblers (especially after an early morning study hour per Brain Matters), we hope that you'll be inspired, excited and fulfilled. The final 'new' – please tell your neighbours and friends what a great read the Magazine is as new subscribers are always welcome!

**Penny Cracknell**

## CONTACTS

### The Benefice of Ightham and Wrotham THE PARISH OF ST PETER'S, IGHTHAM

*Registered Charity No. 1136162*

Rector:	Parish in vacancy	
Church Warden:	Naomi Webster	T: 07421 832919
	E: <a href="mailto:churchwardens@ighthamchurch.org.uk">churchwardens@ighthamchurch.org.uk</a>	
Benefice Administrator:	Jane	T: 07940 547310
	E: <a href="mailto:admin@ighthamchurch.org.uk">admin@ighthamchurch.org.uk</a>	

### IGHTHAM MAGAZINE

Editorial:	Penny Cracknell	T: 07811 066253
	E: <a href="mailto:cracknellpa@gmail.com">cracknellpa@gmail.com</a>	
Advertising:	E: <a href="mailto:stpetersadverts@btinternet.com">stpetersadverts@btinternet.com</a>	
Subscription:	E: <a href="mailto:magazine@ighthamchurch.org.uk">magazine@ighthamchurch.org.uk</a>	

**Copy deadline for the OCT edition is 15th Sept**

## MEMORIES ARE MADE OF THIS – ‘Open the Book’

‘Memories are made of this’, so sang Dean Martin in 1956. The song still lingers in our minds as it was such a big hit in 1956, and it has been replayed frequently ever since. The summer holiday for children across the country marks the change from the old to the new, from Primary School to Secondary School, or leaving school altogether. Boys and girls will leave with memories of the previous 6 years that will slowly fade. For most of us reading the Parish Magazine, that graduation from Primary School took place 40, 50 or 60 years ago perhaps. We remember some of our friends, especially the ones with whom we stayed in touch. We remember some of the teachers, and we may remember the strange Victorian buildings that served as our school. We were there to learn, but the actual content of any lessons may be amongst the first moments that we no longer recall. On the other hand, the school play that we acted in, the poem we recited or the songs that we learned have stayed with us. But the weekly assembly or Collective Worship; can we recall a single one?

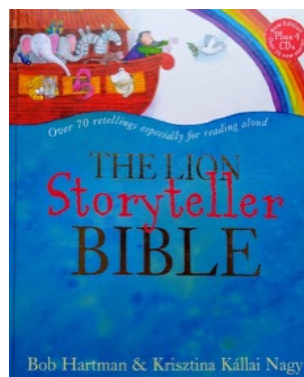
Ightham Primary School has continued to welcome the team drawn from parishioners to lead Collective Worship. At our fortnightly visits on Tuesday

mornings as a team, or Max alone with an audio-visual format we have presented dramatized Bible

stories from the Lion

Storyteller Bible, as well as using material known as ‘Open the Book’, produced by the Bible Society. Used by teams visiting over 3000 primary schools across the country, the presentations are carefully followed in a way that the schools can be reassured about the content and can know what is to be presented. It has long had Ofsted approval. The booklets contain an introduction to each story as well as a reflection, and a prayer that the children may or may not wish to make their own with an ‘Amen’ at the end.

We have always been encouraged by the six or more enthusiastic volunteers from year six who assist us in presenting the stories. Sent to us just minutes before the rest of the school file in, there is just enough time for a volunteer briefing but not for a rehearsal. They relish the dressing up for their roles and miming the drama of the story. Many hands are eagerly raised to





volunteer to read scripts of a few lines that are interspersed with the adult actors' and the narrator's lines. A great variety of props enhance the presentation. There may be boats, walls that collapse, a big fish, animal masks and head dresses. Over the course of a year, we aim to include a mix of events from both the Old and the New Testaments so that in a two-to-three-year cycle, we will have presented most of the stories available from the 90 stories in the series.

So to return to the question that we started with: is Collective Worship meaningful? Does it make an impact? Is it memorable? The presentations are certainly well received by the children and the supervising teachers. The attention and reaction of the 210 or so children present are a further encouragement as also is the feedback that we have received from the staff. The year 6 volunteers do seem to remember seeing the presentations years previously. Clergy are grateful to be part of a presentation that will be more memorable than a straightforward story telling.

School and church are brought closer together through the frequent contact, and both institutions can benefit from the seamless contact maintained through an interregnum. As a benefice, we are very grateful for the invitation to lead Collective Worship and for the opportunity to present Bible Stories for the many children that may not darken the doors of a church or have Bible stories read to them at home.

### **Jenny, Max, Patricia and Tim**



The Lord is my light and my salvation - whom shall I fear?  
The Lord is the stronghold of my life - of whom shall I be afraid?

**Psalms 33: 4 - 5**



# SEVENOAKS

Plumbing & Heating



PLUMBING  
BATHROOMS  
CENTRAL HEATING

REPAIRS  
MAINTENANCE  
EMERGENCY CALL OUT

07710 606080  
[WWW.SEVENOAKSPLUMBINGANDHEATING.CO.UK](http://WWW.SEVENOAKSPLUMBINGANDHEATING.CO.UK)



**A reliable  
electrical company  
in your area.**

**01959 523054**



- No job too small
- All work is guaranteed.
- Competitive free estimate
- Highly-trained, competent, and fully-qualified.



17 Ashen Grove Rd, East Hill,  
Otford, Sevenoaks, Kent TN15 6YE.  
Email: [Office@EastonElectrical.co.uk](mailto:Office@EastonElectrical.co.uk)

Proud members of  
**Checkatrade.com**  
Where reputation matters



**The Original Tree Surgeons Ltd**

## **Tree Care Specialists**

### **Domestic & Commercial Tree Care**

Tree Felling • Thinning • Hedge Trimming & Pruning  
Dead Wooding • Reduction • Crown Lifting • Safety Pruning  
Tree & Stump Removal • Cable Bracing

**0800 145 5262 • [office@otskent.co.uk](mailto:office@otskent.co.uk)**  
**[www.otskent.co.uk](http://www.otskent.co.uk)**

## Dear Friends and Parishioners,

Looking back to the June magazine, plants were in full leaf and trees were showing a kaleidoscope of greens. Now the greens have deepened, and we are past the longest day. Looking back we've been blessed with glorious summer days, a gift of a true English summer.

We have seen the busyness of the birds reduced when the day was at its hottest, as they kept to the shade. With temperatures often approaching 30 degrees, most of us will have wisely been keeping out of the sun! We've also helped the birds putting water out for them – I have enjoyed the visits of young blue tits, often as a group, perhaps daring each other to come!

As I cover various areas of work for the Rector, I have been involved in some funerals. It is a privilege to do my best to give the person who has died a peaceful service, with encouragement to the family and friends who mourn a loved one. In preparing for a service, whether a funeral or a service to celebrate the person's life, I find it very important to emphasise hope for the future. As they say, one thing is certain about life and that is that it will end. Then hope for the future really matters.

In life we need to work, but at other times we can choose who we spend our time with; often with the ones we love. The hermit is not typical in wanting to spend time alone with

God. We like to keep in touch with family and friends, to know what is happening, because we care about them. As we care, we can also share in the ups and downs of their lives. We may be able to ease the downs, finding an opportunity to raise someone else's spirits.



It is interesting and uplifting when attending a funeral to hear all the good things about the person who has died. You can then understand that person's positive impact on many lives, which is a cause for thankfulness and celebration. For we who are living, it presents an opportunity – to see if we can have a similar effect on someone who is struggling. And to seek help ourselves, when we need it.

I am a fan of the weekly coffee shops at both St George's and St Peter's and will admit to enjoying the cake! However, a greater value is the opportunity to come together and chat, over a cup of coffee or tea. Or simply to pause in our busy day. It may also be a Godsend for the person who is down. Do keep an eye open for someone who might appreciate a supportive word. We also have lovely churches in both our villages, if a quiet word with our Father would help. Amen.

**John Webster**



# IGHTHAM IGHTHAMS

On Saturday 13<sup>th</sup> September we will have our monthly Men's Breakfast at the George and Dragon in Ightham, at 8.30 am. This continues our monthly visits which have taken place for over 15 years. We enjoy an excellent full English breakfast on the second Saturday of the month.

We will be very pleased if any newcomers would like to join us for some good conversation over a leisurely breakfast in lovely surroundings. If you would like to join us and / or would like to have a regular reminder, please can you let me, John Webster, know via email:  
[jnhjk.webster@btinternet.com](mailto:jnhjk.webster@btinternet.com);  
or phone: 01732 884819.



## ST PETER'S COMMUNITY COFFEE SHOP

We offer a warm welcome, good company, delicious food and drink. Cash or cards accepted!

Toys are available for younger visitors to play with.

Two of our greatly valued helpers are stepping down and I would love to hear from anyone who would be happy to come and help once a month either by helping and baking, baking or helping

Please contact Jenny Webster - [jnhjk.webster@btinternet.com](mailto:jnhjk.webster@btinternet.com) 01732 884819 07752463238

10.15am  
to 11.45 am

Church  
Centre

*The charity for September is **The Royal Osteoporosis Society**. A charity working to improve the bone health of the nation and support everyone with osteoporosis to live well...*

*50% of our takings are given to a nominated charity and 50% to St Peter's Church.*



### Macmillan Coffee Morning

Wednesday 24th Sept from 10am – 11.45am. Please come and support this very worthwhile cause.

Meet friends enjoy a chat, eat delicious cakes and savouries and drink coffee.

Raffle \* Harvest-themed Bring and Buy Stall \* Hand-made cards



# MORE IGHTHAM IGHTHAMS

## Interregnum Help

Any questions or offers of help during the vacancy, please contact Jane [admin@ighthamchurch.org.uk](mailto:admin@ighthamchurch.org.uk) or Naomi [churchwardens@ighthamchurch.org.uk](mailto:churchwardens@ighthamchurch.org.uk) For further information, please see the Benefice News elsewhere in the Magazine.

## Welcome to Ightham Booklet

New to the village? Please contact the Parish Administrator for the latest edition of this useful booklet. E:

[admin@ighthamchurch.org.uk](mailto:admin@ighthamchurch.org.uk)



## Ightham Magazine

Subscribe to the Ightham Magazine and keep up to date with local news and events; read the latest Parish Council deliberations; and find contacts for local trades. The annual subscription is £10, for 10 issues delivered free to your door. Payment can be made by standing order, cheque or cash. To subscribe, please contact E: [magazine@ighthamchurch.org.uk](mailto:magazine@ighthamchurch.org.uk)

## St Peter's Church Parent, Baby & Toddler Group

New to Ightham? New mum at home? New child carer?



**Thursday  
10 - 11.30 am  
(term time only)  
in St Peter's  
Church**

From napping newborns to toddlers on trikes, this friendly and welcoming group would love to see you! Come along to meet local Mums and carers over coffee/tea, and yummy home-baked cake.

Need to know more?

The Group's leader, Kirsty Mitchem, will be delighted to hear from you. T: 01732 885072.

## ARBORICULTURAL & LANDSCAPE CONTRACTORS

All aspects of domestic & commercial tree surgery

Woodland management & site clearance

Firewood sales & woodchip production for biomass

Fencing supplied and erected

Hard landscaping and groundworks



# RWE

[www.rwers.co.uk](http://www.rwers.co.uk) **RURAL SERVICES**

T: 01732 746 281

E: [office@rwers.co.uk](mailto:office@rwers.co.uk)

## Annual Membership

<b>Adult</b>	<b>£99</b>
<b>Family</b>	<b>£182</b>
<b>Couple</b>	<b>£182</b>
<b>Junior</b>	<b>£30</b>
<b>Student</b>	<b>£40</b>



## Ightham Tennis Club

*Friendly club for adults, families & juniors*

**2 courts • floodlights • club sessions • ball machine**

**Club Coach: groups & private lessons • cardio tennis**

returners/beginner sessions • club tournaments

fitness classes • LTA ballot

[clubspark.lta.org.uk/IghthamTennisClub](http://clubspark.lta.org.uk/IghthamTennisClub)

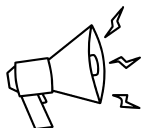


## ANA MARIA PACHECO

A Modern Bestiary: Screenprint exhibition at Ightham Mote  
15 September – 2 November  
Myth, morality, and modern life collide in internationally renowned artist, Ana Maria Pacheco's, striking take on the tradition of the bestiary — the richly illustrated medieval book pairing animal imagery with human lessons.

The creatures are far more than just animals — they are sharp, witty reflections on contemporary political, ecological, and social issues. Pacheco's rich visual storytelling returns following her successful The Seven Deadly Sins sculptural reliefs displayed in 2024.

Presented in partnership with  
Pratt Contemporary Art



**CALLING ALL LOCAL COMMUNITY MEMBERS!**

You are invited to join the

**Friends of Ightham School**

**on the NEW TERRACE at  
The Hutch Deli & Café**

for drinks and snacks



**Wednesday 24<sup>th</sup> September @ 6pm**

Please come along to hear about the work of Friends of Ightham School and meet the new Head Teacher, Ms Earl.

Everybody is welcome! Old friends and new!

If you would like to come, please email Paula Freeman [paulapricepp@googlemail.com](mailto:paulapricepp@googlemail.com) or call Mark Keenor on 07770 440343



## **EKW LEGACY PLANNING** **Local Will Writing Service**



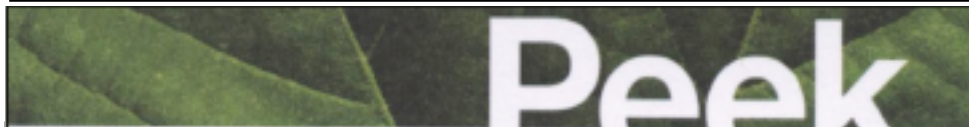
**IS YOUR WILL UP TO DATE?**  
**IS IT AFFECTED BY THE NEW IHT RULES?**

**A NEW WILL CAN SAVE INHERITANCE TAX AND PROTECT YOUR PROPERTY  
AND SAVINGS IF YOU GO INTO LONG TERM CARE**

For a free Will review and help with all types of Wills, Transfers to Tenants in Common,  
Children's Trusts, **Lasting Powers of Attorney** etc

**Call our local specialist Tony Nunn on 01732 369294 for a FREE consultation**  
or Freephone 0800 1698038

[www.ekwlegacyplanning.co.uk](http://www.ekwlegacyplanning.co.uk) email: [willplanning@gmail.com](mailto:willplanning@gmail.com)



## **PEEK LANDSCAPING**

Driveways, Paths, Patios, Walling, Drainage, Fencing/gates, Turfing, Planting  
Garden Clearance. All work carried out to the highest standard, customer  
references available on request. Fully Insured.

For free advice and quotations, contact Brooke Peek on: M 07494 538522  
E: [brooke\\_peek@hotmail.co.uk](mailto:brooke_peek@hotmail.co.uk)

## **GURKHA CLEANING & LAUNDRY SERVICE**

**Domestic & Commercial Cleaning**

**Door to Door Laundry & Dry Cleaning Service**

**Carpet Cleaning**

**9 Orchard Place Business Centre, TN15 8XQ**

**T: 01732 885511**

**E: [info@gcals.co.uk](mailto:info@gcals.co.uk)**

## **The Birkbeck Chiropody & Podiatry Practice**

Health Professions Council (HPC) Registered Podiatrists

Open Monday to Saturday Day and Evening Appointments  
Treatments by appointment only Easy Car Parking

**To Book an Appointment Please Call**

**01732 883271**

Woodlands, 172 Maidstone Road, Borough Green, Sevenoaks TN15 8JD  
T | 01732 883271 W | [birkbeckpodiatry.com](http://birkbeckpodiatry.com)

## SEPTEMBER – branch out this Autumn!

- Enjoy a warm and prickly weekend at **Lullingstone Castle** with ‘Cactus at the Castle’, 6 & 7 September, 11am – 5pm. A celebration of everything succulent – buy, discuss, learn and meet fellow enthusiasts of these fab plants.
- Try something creatively new with Eden Valley Arts, **Riverhill Himalayan Gardens**, 10 – 21 September.
- Buy a gift at **Hever Castle’s** Autumn Craft Fair, 18 – 21 September.
- Try **Penshurst Place** new Wealden Times Pop Up Fair, Fri 12 September, 10am – 1pm. £12pp.
- Forage at **Bore Place**, with an Autumn Foraging Walk, 27 Sept, 2 – 4.30pm, £35 booking required.
- Chuckle at Toad’s outrageous antics with **Great Comp Garden’s** open air production of ‘Toad of Toad Hall’, 7 September, 3.30pm.
- Enjoy **Sevenoaks Book Shop** upbeat September 7 pm talks. Michael Rosen (4 Sept) with his new book, ‘Good Days: An A-Z of Hope and Happiness; & food writer Diana Henry (24 Sept) on her new memoir through food, ‘Around the Table’.

**Check websites for full booking and ticket details.**

**All book worms** should head to Borough Green and Sevenoaks Libraries where they’ll find a cornucopia of literary delights, including children’s activities! Check the Kent Library service website <https://www.kent.gov.uk/leisure-and-community/libraries> or call T: 03000 41 31 31 for opening hours and up to date information.



## Ramblers - September 2025

### Stroll or stride . . .

with our friendly group of Kent Ramblers, part of the national Ramblers walking organisation.

You don’t have to be a Ramblers’ member to sample a few walks to help you decide if you’d like to join. If you’re new, we suggest contacting the walk leader beforehand to check their walk’s suitability.

Walks inviting you to wander, meander or stride all feature in September. Full details can be found on [Upcoming Walks](#) link or [Facebook page](#) or E: [info@tonbridgeandmallingeramblers.org.uk](mailto:info@tonbridgeandmallingeramblers.org.uk)



We look forward to welcoming you!





## WROTHAM COMPUTER CARE LIMITED

Friendly, local IT support for Home & Business users of  
PC's & Apple Mac's

Software & Hardware repairs or installation

Install Broadband, Wired or Wireless Networks

Virus & Spyware removal

**Tel: 01732 780176**



## WELHAM JONES

An independent family owned company

Funeral Directors & Monumental Masons

Borough Green, Ightham, Wrotham & West Malling

**01732 780600**

43 Western Road, Borough Green, TN15 8AL  
email: [boroughgreen@welhamjones.co.uk](mailto:boroughgreen@welhamjones.co.uk)

[www.welhamjones.co.uk](http://www.welhamjones.co.uk)



24 hour  
service

Pre - paid funeral  
plans available



# IGHTHAM WI

July was our garden meeting which was held in the Church Centre. We were blessed with good weather and members had a wonderful time wearing our Celebratory Hats. The outright winner showcased an outstanding hat circled with homemade felt animals, birds and other adornments. We were all very impressed! The traditional raffle raised over £180 with a donation made to Babons Cancer Support, a local Tonbridge-based charity.

In August, 25 ladies thoroughly enjoyed a very social gathering at The Kentish Rifleman for Pie and Pint - an event we always look forward to.

## September meeting:

*Elizabeth Knight talking about Jane Austen.*

Between these two gatherings, the WI have been busy making sandwiches and cupcakes,

catering for a Celebratory Tea at Ightham Mote marking the house's 40th birthday of National Trust ownership. Again, we were blessed with sunshine, a band and a lot of happy smiling faces. A memorable afternoon for all.

**theWI**  
**INSPIRING WOMEN**

**New members and visitors are always welcome. Any enquiries, please contact Helen Johnson, President, Ightham WI. E: [happyflowers@live.co.uk](mailto:happyflowers@live.co.uk)**





# LJ Travel

Dream - Explore - Discover

Are you looking for your own little piece of paradise?

Then look no further!

We offer professional, friendly advice with the assurance that your holiday and money will be financially protected.

Please support local!

Cruise  
Luxury  
Family Fun  
City Breaks  
Tailor Made  
& Much Much More!

OPENING HOURS  
MONDAY – FRIDAY 9AM – 5PM  
SATURDAY 9AM – 1PM



Tel: 01732 886968

email: [info@ljtravel.co.uk](mailto:info@ljtravel.co.uk)

[www.ljtravel.co.uk](http://www.ljtravel.co.uk)



## Sunshine Landscape and Gardening Services

Full Garden Services from Design and Construction to Lawn maintenance and cutting, beds planted and weeded. Trees and shrubs trimmed, hedge cutting and planting. Paths, Patios and Fencing.

Free quotes with no obligation.

For all your garden requirements  
call Alan on 07711 079014

Locally based and Hadlow qualified.



## Pilates

Tuesdays 9am & 10am

Ightham Village Hall

Find out more by emailing:  
[bodywellnesspilatesstudio@gmail.com](mailto:bodywellnesspilatesstudio@gmail.com)

Group Reformer and  
Private Sessions  
at other times - Studio in  
Hildenborough

[www.bodywellnesspilates.org](http://www.bodywellnesspilates.org)



## FROM YOUR MEMBER OF PARLIAMENT

As we approach the start of the next academic year in September I, like every other parent, am preparing to send my children back to school after the long summer holidays. The next long break won't be until Christmas, of course. It will be here before we know it.

It means we are at the time of year in which I start accepting nominations for my annual Christmas Card Competition.

Each year I meet thousands of people across Tonbridge, Edenbridge and North Downs villages, as well as people in Parliament and abroad too. I always try and send as many Christmas cards as I possibly can.

Given the creativity and imagination I see from children in our area every time I visit a school, each year I invite entries to design the front cover of my Christmas card from children in our area. If you have any children, grandchildren, friends or relatives who have a talent for art and would like to apply, I would like to hear from you.

Drawings must be A4, portrait or landscape. It would be great to have a Christmas theme. The winning design and three highly commended entries will



also receive 100 blank copies of their own card and I will invite them to meet me and have a tour of the Houses of Parliament with their parents.

The deadline for entries is the end of October, so the cards can be printed, signed and posted to arrive before 25 December. Please kindly post entries to my office at 130 Vale Road, Tonbridge, Kent, TN9 1SP. If you have any questions please call 01732 441563 or e-mail me on [tom.tugendhat.mp@parliament.uk](mailto:tom.tugendhat.mp@parliament.uk).

Best wishes

Tom

Tom Tugendhat MBE MP - Member of Parliament for Tonbridge and Malling

### FOOD BANK SUPPORT

Food bank donations are greatly appreciated. Please keep dropping off your contributions in church. Kindly remember that all donations must be non-perishable and within 3 months of the 'best before date'. Thank you for your generous support, The Food Bank is administered by the Church of the Good Shepherd, Borough Green and makes a huge difference for local families in need.

# Adam's Gardens

*Let your garden be mine too*

- General Garden Maintenance
- Renovation
- Expert Pruning
- Ideas & Inspiration
- Plant Advice / Supplies

**Friendly, Reliable & Fully insured  
Studied Horticulture at Hadlow  
(National Diploma - Distinction)**

*Ring for a free quote*

**07957461958**

**01732 846796**

**adamurgardener@aol.com**



## BEST BEHAVIOUR

SCHOOL FOR DOGS

### Can we help to exercise your dog?

We collect your dog to run and play with others in a secure field. We return them home happy and tired!

Dogs are collected from Sevenoaks and surrounding villages

Call for more information

Tel: 07967 075917

[www.bestbehaviourschoolfordogs.co.uk](http://www.bestbehaviourschoolfordogs.co.uk)

Naomi Brooks BSc Animal Behaviour & Welfare



**IGHTHAM  
PLUMBING & HEATING LTD**

**01732 905959**

[services@ighthamplumbingandheatingltd.co.uk](mailto:services@ighthamplumbingandheatingltd.co.uk)

Your local reliable  
plumbing & heating  
engineers,  
plus bathroom designs &  
installation  
with over 25 years of  
experience

- ✓ FULLY GAS SAFE & OFTEC (OIL) QUALIFIED - INC LANDLORD CERTS & SERVICING
- ✓ G3 UNVENTED GAS CYLINDERS
- ✓ LPG
- ✓ ACCREDITED WITH SAMSUNG & VAILLANT AIR SOURCE HEAT PUMPS
- ✓ A/C F1 GAS REFRIGERANT
- ✓ CSCS SITE TRAINED
- ✓ 24/7 EMERGENCY CALLOUT



# St Mary's Platt Scarecrow Trail

**Sat. 6<sup>th</sup> – Sat. 27<sup>th</sup> September**

People in the village have been working hard on their scarecrows and welcome you to come and spot as many as you can and vote for your favourite!

Hunters will find a voting box in the Platt church, where you'll find a prize for your hard work!

The scarecrows with the most votes will be winning prizes, kindly donated by local businesses.

Why not stop at The Blue Anchor for refreshments on your way round?

Head to Reuthe's, on the A25 to see their Scarecrows!

Maps will be available to purchase from Saturday 6<sup>th</sup> September from **The Blue Anchor Pub, Reuthe's and Shakti News** for only £2.

All proceeds go to St Mary the Virgin Church, Platt.



## REPORTING COMMUNITY ISSUES

**TMBC Refuse Collections:** Click on the link below for all refuse questions: <https://www.tmbc.gov.uk/bins-waste/check-waste-collection-updates>

**Highway problems** including potholes, drainage and overgrown roadside foliage: <https://www.kent.gov.uk/roads-and-travel/report-a-problem>

### Community Police Contact:

Our local contacts are: Inspector Terry Newman;  
Sgt Nick Atkinson; PC Dylan McElligott and Irina Mgebrisvili, Community Liaison Officer - PSE.



Call 101 if you need to contact the police for a non-emergency; 999 for an emergency or report issues with a simple online [form](#).



# Stephen P. Gay

Funeral Service and  
Memorial Masons

*serving the community  
Since 1982*

Funerals tailored to suit individual requirements

Memorials made using the very best materials available

## Funeral Homes

[www.stephenpgayfunerals.co.uk](http://www.stephenpgayfunerals.co.uk)

9 Western Road, Borough  
Green, Kent, TN15 8AL  
Tel: 01732 780222 (24hrs)  
[b.green@stephenpgay.co.uk](mailto:b.green@stephenpgay.co.uk)

39 & 41 High Street, West  
Malling, Kent, ME19 6QH  
Tel: 01732 780333 (24hrs)  
[w.malling@stephenpgay.co.uk](mailto:w.malling@stephenpgay.co.uk)

## Memorial Showroom

120 Old Road West, Gravesend, Kent, DA11 0LR  
Tel: 01474 321 003  
[www.stephenpgaymemorialskent.co.uk](http://www.stephenpgaymemorialskent.co.uk)



*"Remembering you on this day,  
Comforted by so many memories"*

**BRAMM**



**IGHTHAM & DISTRICT GARDENERS' CLUB**  
Held At Ightham Village Hall

**"AUTUMN EVENING SHOW"**

**FLOWER, FRUIT & VEGETABLES DOMESTIC & FLORAL CLASSES**

**TUESDAY 2nd SEPTEMBER 2025**

**Staging for Exhibitors from 6.00 to 7.00pm**

**Judging commences at 7.00pm**

**Doors open for viewing classes at 8.15pm**

**(VARIETY OF CLASSES, ALL OPEN to NON MEMBERS)  
COME ALONG AND HAVE A GO AND HAVE SOME FUN**

\*\*\*\*\*

**For further information or a Show Schedule  
contact Pippa Coulthard – 0776 198 3800  
or Dee Samways – 0779 900 2129**

**FOURWAYS**  
ENGINEERING



**EST. 1973**

**Specialists in all Classic and Sports Car  
Restoration and General  
Servicing and Repairs**

**Unit 12 Platt Industrial Estate, Maidstone Road,  
St Marys Platt, Sevenoaks, Kent, TN15 8JL**

**Telephone: 01732 884 288  
Email: [info@fourwaysgroup.co.uk](mailto:info@fourwaysgroup.co.uk)**

# Brush Strokes

## DECORATING SPECIALIST

Ightham-based decorator  
With 18 years experience in all aspects  
of Interior and Exterior work.  
Carpentry work also undertaken.

Contact: Mark Bradley

07940 564 779

[brushstrokes7oaks@gmail.com](mailto:brushstrokes7oaks@gmail.com)

<https://www.freetype.com/VectorGold>



**Slimming World  
Group  
on Wednesdays**

8.00am, 9.30am,  
5.30pm and 7.00pm  
at Borough Green  
Village Hall.

**Phone Anita on  
07725 484361**

## BRS LANDSCAPES.COM

*Specialists in hard landscaping,  
with an artistic eye and an  
understanding of plants*

Block Paving Driveways \* Patio's  
and Paths \* Brickwork, Rockery  
Construction \* Fencing and Trellis \*  
Turfing \* Planting and Staking

**Difficult conditions never a problem**

*For assistance with both the creative  
& practical aspects of garden design*

Call Bradley on 01732 763289 or  
07788 560818 or email [contact@brslandscapes.com](mailto:contact@brslandscapes.com)





# FRIENDS OF IGHTHAM SCHOOL

A new school year, new pupils, new activities and challenges, and a new Head Teacher! A warm welcome is extended to Mrs Saheed, as she commences her new role as Head Teacher this September.

Here are some happy reminders of challenges enjoyed by the pupils at the end of the last school year. We wish pupils and staff alike good luck for the Autumn term, and we look forward to sharing their news in future Magazine editions.



## FRIENDS OF IGHTHAM SCHOOL

If you would like to know more about Friends of Ightham School, make a donation or see how you can get involved please do get in touch by contacting Mark Keenor on 07770 440343

Friends of Ightham School  
Registered Charity No.1192718  
Natwest Business Current Account  
Acct No. 83188312  
Sort Code:51-81-07



## SHIPBOURNE FARMERS' MARKET



As the nights start to draw in, the shorter days signal the changing season. Right now, both vegetarians and meat eaters alike are well catered for with the wealth of produce on offer. Tomatoes, courgettes, sweetcorn, peas, cauliflowers, runner beans, cabbages and onions are all plentiful. Winter squashes and pumpkins are starting to arrive and come in an amazing array of shapes and sizes, all with different flavours and textures – try in soups, curries, gratins and risottos. It is also the season for local cobnuts and walnuts to use in cereals, salads, cakes and breads.

Raspberries and strawberries are still available but soft tree fruit are at their best and juiciest now so don't miss plums and greengages. They are wonderful for eating and using in preserves, ice-creams and pies. You will also find early apple varieties so you'll have both soft and hard fruit to enjoy.

Fish and seafood are abundant this month. Mackerel and sea bass are plentiful. Wash down with a glass of the finest Meopham's Signature Brut or Phoenix Rose Brut available from Gordon at the Market.

Venison is the current game of choice. It's the perfect free-range meat – minimum food miles, low in cholesterol and full of useful vitamins. It is lean and tender and is best cooked for a short time either fried or grilled. Serve a venison steak flash

fried with a thyme and mustard butter or marinade in olive oil, lemon, garlic and chilli and cook on a griddle.

Cheaper cuts of meat such as belly pork, shin of beef and lamb shank all taste particularly good. They tend to be easier to find at the Market, where meat producers use their skills to ensure the entire animal is prepared for home cooks to enjoy at its best with no waste. For lighter meat, try guinea fowl. Cook in the same way as a small chicken roast, wrapped in streaky bacon, and enjoy the flavour which is richer than chicken and subtly gamey.

Stall update: Freedom Coffee will be taking over from Sid's Cafezhino, who is now concentrating on her wholesale business from Singapore. Freedom Coffee, run by Dan, is a nano-roastery based locally in Borough Green. They source their beans from smallholder farmers around the world, from Brazil and Colombia to Vietnam, Burundi, and Rwanda and donate a portion of profits to their charity partner, which supports farmers and communities at origin.

**For further information regarding Farmers' Markets in Kent, visit [www.kfma.org.uk](http://www.kfma.org.uk) and to find out more about Shipbourne Farmers' Market see [www.shipbournefm.co.uk](http://www.shipbournefm.co.uk)**

## COOKERY CORNER

### HOMEMADE TOMATO KETCHUP

*A great way to use up a glut of home-grown tomatoes, delicious served with steak and chips.*

#### Ingredients

- 1 large red onion, peeled and roughly chopped
- ½ bulb of fennel, trimmed and roughly chopped
- 1 stick of celery, trimmed and roughly chopped
- Olive or rapeseed oil
- 5cm piece of ginger, peeled and roughly chopped
- 2 cloves of garlic, peeled and sliced
- ½ a fresh red chilli, deseeded and finely chopped
- 1 bunch of fresh basil (30g), leaves picked, stalks chopped
- 1 tbspcoriander seeds
- 2 cloves
- 500g ripe cherry or plum tomatoes, halved
- 500g tinned plum tomatoes, chopped
- 200ml red wine vinegar
- 70g soft brown sugar

*Taken from [www.jamieoliver.com](http://www.jamieoliver.com)*

#### Method

1. Place all the veg in a large heavy-bottomed saucepan with a big splash of olive or rapeseed oil and the garlic, ginger, chilli, basil stalks, coriander seeds and cloves. Season with a teaspoon of black pepper and good pinch of sea salt.
2. Cook gently over a low heat for 10 - 15 mins, or until softened, stirring every so often. Add all the tomatoes and 350ml cold water. Bring to the boil and simmer gently until the sauce reduces by half.
3. Add the basil leaves, then whizz the sauce in a food processor or with a hand blender and push it through a sieve to make it smooth and shiny. Put the sauce into a clean pan and add the vinegar and sugar.
4. Place the sauce on the heat and simmer until it reduces and thickens to the consistency of tomato ketchup. Season to taste.
5. Spoon the ketchup through a sterilised funnel into sterilised bottles, then seal tightly and place in a cool dark place or the fridge until needed. It will keep for six months.

#### Stallholder Shopping List:

- Veg and herbs – Watts Farms
- Rapeseed Oil – The Cooperative Stall

## BRAIN MATTERS...

### Exercise Matters...

As we leave an unseasonably warm summer - I'm sure we were all surprised by just how dry it was - we hope for a continued mild march into autumn. September always brings about the start of new learning be it school, college, university or independent learning courses.

When we consider exercise we attribute it to general fitness and body health but not necessarily its links to helping us learn.

Wonderfully an interesting piece of research was published last year examining the link between learning memory attainment and exercise. Simply, after studying a group did 20 minutes of moderate exercise - walking, cycling or light movement and had better memory retainment the following day when tested than the group that did



nothing post studying. This link is interesting and explained by improving our brain's ability to consolidate memory through the hippocampus aided by the BDNF (brain derived neurotropic factor) protein which exercise boosts via increased blood flow. This helps to wire in the new information and exercise helps to stimulate the memory function in the hippocampus. Thus strengthening the connections of the new learned information. Timing for this matters - it needs to be within an hour of studying! Just remember you don't have to do anything too strenuous. A well paced walk, an uplifting bicycle ride or even a gentle Pilates or yoga flow should help to focus all that you've learned.

Give it a whirl! The worst that can happen is you've studied and learnt something and added in some much-needed exercise. If it works, you've just made yourself a better learner!

***Chantal Montebello-Ealey***



**KENT COUNTRY SERVICES**  
Mowing Forestry Permaculture

07745 165 620  
[contact@kentcountryservices.co.uk](mailto:contact@kentcountryservices.co.uk)

# Badger Bathrooms



*Local  
Independent  
Family-run  
Bathroom Specialist  
Established 42 yrs!*

*Supply only or fully installed bathrooms*



Book an appointment!

SHOWROOM: Betsom's Farm, Westerham TN16 2DS

[www.badgerbathrooms.com](http://www.badgerbathrooms.com) 01732 464450

# IGHTHAM PARISH COUNCIL



**Chairman:** Cllr Rodney Willingham

**Vice Chairman:** Cllr Michael Holden

**Parish Clerk:** Mrs Sarah Huseyin  
T: 01732 886402  
[ighthamclerk@gmail.com](mailto:ighthamclerk@gmail.com)

**Councillors:** Cllr Steve Burgham  
Cllr Carol Clark  
Cllr David Emmett  
Cllr Stephanie Gunson  
Cllr David Hall  
Cllr Tamsin Hogarth  
Cllr Kirsty Mitchem

## AN EXTRACT OF THE PARISH COUNCIL MINUTES

**Tuesday 22 July 2025**

(Full Minutes can be found at [www.ightham.org](http://www.ightham.org) or by emailing the Clerk)

Cllr Rayner reported that the committee system had started with the governance and audit meetings, with many members being new to the Council. Local Government Reform (LGR) is active and there is an LGR committee. The report for adult services showed an over budget spend of £35.5 million; this will impact other non-statutory services. A new medium term financial plan is needed with an estimated £100-£120m in savings. There has been an increase in members' grants which will be good news for parishes. The sale of Sessions House is no longer going ahead; Invicta House will be sold instead. KCC has written to the Government to ask for a contribution from the

Dartford Bridge tolls.

KCC is looking to integrate Children's Services and buy their own facilities; this is to help with housing of asylum-seeking children of which there are 500-600 per month. The "Doge" Team (Department of Government Efficiency) have been looking at all departments at KCC to recommend cost savings and improvements in efficiency.

At KALC T&M last week, it was reported that the leader of KCC had written to the Government to ask for a relaxation in the law for providing visas for care workers coming from overseas as Adult Services are having to pay more money for agency staff. Mike Taylor reported at KALC T&M that the first draft of the Local Plan, Reg 18B, would be available in November 2025.

Cllr Emmett reported that he had contacted Emma Cobb several times regarding Old Lane and had not had a response. He said that he would pursue legal action if he didn't get a response and Cllr Rayner said that he would support this.

### MATTERS ARISING

Highways & PROW Matters: HIP update – Oldbury 20mph - The Clerk reported that Kent Highways (KH) had carried out their consultation on 20mph limit on Oldbury Lane and 8 people out of 19 respondents had



## PUBLIC OPEN DAYS

Join us at Planet Plants,  
your local wholesale  
nursery specialising  
in ornamental shrubs  
and trees, on dedicated  
public open days this year.

# PLANET PLANTS

Visit our website and follow us on Facebook and Instagram to find out about these events which take place from Spring to Autumn or get in touch to find out more.

 [planetplants.co.uk](http://planetplants.co.uk)

 [facebook.com/planetplants](https://facebook.com/planetplants)

 [instagram.com/planetplants\\_ightham](https://instagram.com/planetplants_ightham)

Tel 01732 884589 Email [info@planetplants.co.uk](mailto:info@planetplants.co.uk)

PLANET PLANTS, BACK LANE, IVY HATCH, IGHTHAM, SEVENOAKS TN15 9AU



## CAR WRIGHT

*Auto Services*

Sevenoaks Road, Ightham, TN15 9AD

**01732 780591      For All Auto Queries      07747535657**

**All makes and models | MOTs | Free Courtesy Car**

**Free local collection and delivery.**

**Brakes | Servicing | Repairs | Number Plates**

**All mechanical and diagnostic work carried out by**

**Qualified automobile engineers**

objected. Based on the number of objections, Ightham Parish Council and our member, Cllr Rayner have been asked whether we still wish to pursue the scheme. Both Ightham Parish Council and Cllr Rayner have said that we do. KH have reclassified the objections as comments as they are not objections based on road safety concerns. They are legally required to contact the objectors with additional information that may help them to remove their objection and have given them two weeks in which to respond. We are hoping that the scheme can still be approved once the 2 weeks is up.

**A227 Pedestrian Warning/Slow markings:** We have been advised that there are no suitable locations to erect pedestrian warning signs and have been asked whether we wish to proceed with the rest of the scheme to put slow markings on the road including red surfacing. We have been advised that this may be declined as generally red surfacing is only installed where there is an evidenced safety justification. The Clerk was asked to go back and ask why other verges aren't suitable and what the remaining scheme would look like, costs and so forth.

**Old Lane:** KCC's Highways Asset Management Team have visited Old Lane and are currently looking at what works would be required to make this road passable for active travel users. They have asked the Highways Improvement Team to pursue the

implementation of a Prohibition of Motor Vehicles restriction which they are taking forward with the Planning & Advice

Team. They have also asked whether we have any evidence/ thoughts on active walking/ horse riding along Old Lane and for our thoughts on future use as an active travel route if it can be an acceptable standard, and whether we have some funds to contribute towards it. It was agreed that we would reiterate that we would like to see this as an active travel route and we should go back and ask them what the likely cost would be.

Cllr Clark reported that cars have been parking along Sevenoaks Road blocking access for buses at school pick up times. It was agreed that we would revisit this in September and if it continues should request double yellow lines near the junction.

**Velocity:** Agreed that Velocity should speak to KCC and the Department of Transport to see whether we would be suitable for a trial village centre traffic calming scheme; their fee is £500 + VAT to investigate this.

Cllr Emmett reported that 2 new bollards had been installed on A25 at the Common Road junction and they obstructed the sightlines.

**Recreation Ground:** Playground repairs and new surfacing quotes – The Clerk reported that she received a quote from Sovereign for



## THE WEST KENT AUTISM PARENT SUPPORT SOCIETY



For parents and carers of children and young people with autism, ADHD or social communication difficulties

With **Claudia Goodman**

Special Needs Teacher, ex SENCO and parent of son with ASD

Meet on the  
first Tuesday  
of the month

9.30-11.30am

St Peter's Church  
Centre, Ightham,  
TN15 9JD

£2 entry includes  
refreshments

- \* Contact with other parents who understand
- \* Feel less alone in a safe, welcoming and non-judgemental setting
- \* Share useful strategies and information re contacts and local resources
- \* Learn and gain knowledge about best strategies and management
- \* Problem-solve and find ways forward
- \* Join us for talks, zooms and socials

**A friendly welcome to all!**

For further details/to register interest:  
**Claudia 07773 599543**

## MITCHELL FLOWER FARM

Rooks Hill Road,  
Bitchet Green TN15 0NG

**Pick your own  
flowers on our  
local farm!**



**June to October  
Fridays and Saturdays  
10am-3pm**

<https://mitchellflowerfarm.co.uk>

**T: 0795 1742101**

**E: alex@mitchellflowerfarm.co.uk**



*Under New Management*

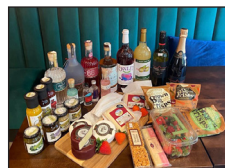
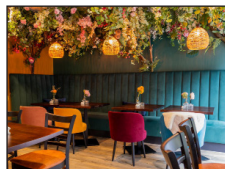
### SELLING FRESH QUALITY LOCAL PRODUCE

Winterdale Cheese - Organic Eggs from Crouch - Plaxtol Bakery Bread  
- Kentish Mayde Pies - Carvery Ham - Korkers Sausages  
Local Gins - Chapel Down Wines - Fresh Fruit - General Groceries

### DRY CLEANING

Home-made Cakes & Soup - Salads  
Fresh Paninis & Sandwiches (wide selection of fillings) - Jacket Potatoes - Tea & Coffee

**Afternoon Teas & Outside Catering  
also available**



Come and see us... Sevenoaks Road, Ightham, TN15 9AD  
(next to The Village Car Wash on the A25 - ample parking)

**Mon-Sat 08.00 - 16.00; Closed Sunday**



The Hutch Deli and Cafe



[thehutchdeliandcafe](https://www.instagram.com/thehutchdeliandcafe)



[thehutchdeliandcafe@outlook.com](mailto:thehutchdeliandcafe@outlook.com)



01732  
781134

a new gate latch and surface repairs & replacement. The Clerk thanked the Scouts for litter picking in the Recreation Ground. Drainage issue: The Clerk reported that the drain on the footpath in the Recreation Ground had overflowed with sewage again following a recent storm. This has been taken up with TMBC as there has been no long-term solution to this issue. We are aware that the problem occurs due to 1928 pipe network and sewerage systems from Ightham and other Parishes all coalescing at the Maidstone Rd pumping station. Cllr Willingham suggested a fixed manhole

cover although it was noted that this may push the problem elsewhere. The Clerk will contact Southern Water to investigate this. Broken goalpost: The Clerk will contact a contractor to repair this. Ightham Sign: update – Cllr Mitchem circulated colours and designs for the Recreation Ground; the dark blue sign with white writing was agreed. The sign will go behind the railings by the pedestrian gate near the main entrance. The Clerk will apply for planning permission with



### **Borough Green and Wrotham u3a**

This is just a reminder that Borough Green and Wrotham u3a monthly meetings are held on the second Monday of each month at 2 pm in Borough Green Village Hall, with tea, coffee and biscuits. Parking/disabled access is available.

On Monday 8th September at 2 pm we will be holding our (very short) AGM, followed by a talk by Jane Scotchmer, gardener and historian, “The Curious Tale of the Surrealist Gentleman”. Jane’s talk will take us through the lens of Edward James, an eccentric English aristocrat, writer and artist. He inherited a huge estate in Sussex and used his wealth to support famous artists and joined in a shocking society (to be revealed)! He also created a magical surrealist

garden, now a worldwide famous Unesco site. Join us to learn of his hilarious antics in creating it all. A most informative and interesting talk is promised, so don’t miss it.



We look forward to welcoming existing and new members and guests (£5). Parking is free for Village Hall users, so please remember to register your car in the Village Hall lobby when you arrive.

For further information, or to join your local u3a, please contact: [info@bgwu3a.org.uk](mailto:info@bgwu3a.org.uk) or visit our website <https://bgw.u3asite.uk>

# NPC

TREE SURGERY

BASED IN IGHTHAM

Call Nick:  
**07712 764 882**

[www.npctreesurgery.co.uk](http://www.npctreesurgery.co.uk)



Safe removal of dead  
and dangerous trees



- Felling and shaping
- Stump grinding
- Hedge cutting
- Tree and hedge planting
- Fully qualified and insured



Advanced decay detection  
equipment to check internal  
integrity of a tree



Expert installers of  
Jacksons Fencing  
(25 year guarantee)



the final design and dimensions. Cllr Willingham will chase the electrician about the repairs to the footpath lights.

Flooding: Busty Stream – it was reported that James Hayward had cleared the Busty. Cllr Clark reported that there were some logs and cuttings by the stream and that it looked messy.

Oldbury Annexe: Cllrs Willingham & Hogarth and the Parish Clerk met with KCC and the Chair of Governors last week to carry out the end of lease inspection. The annexe is in good order and Cllr Willingham recommended a deep clean. A draft copy of a new lease has been passed to the Pioneer Academy, and we are awaiting their comments.

Archive: An advert for a replacement archivist has gone into the parish magazine.

Nature Reserve: Ismays Road. The reserve has been sold and a Keep

Out sign installed. Cllr Willingham will contact the new owner.

TMBC ASB Enforcement Team: The Clerk has sent a request for the team to patrol Oldbury to monitor parking during school pick up and drop off times from September and asked for any other suggestions from councillors.

Churchyard: Update – Cllr Willingham reported that he had approached Nick Connell to cut back the hedge on the boundary between the church and Simon Durling's land. Cllr Willingham has agreed to meet with Anthony Edwards next time he's at the churchyard to agree a schedule of work; the Clerk suggested that a representative from the church should also be present.

5 planning applications were received, and we raised 1 objection. TMBC approved 9 planning applications.

End of meeting.

## **IN MEMORIAM**

Peter Thompson RD MBBS FRCS

9 January 1946 – 27 July 2025

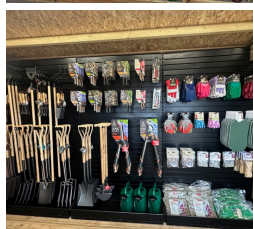
Blessed are those who mourn, for they will be comforted.

**Matthew 5:4**



Borough Green Road, Ightham, Kent, TN15 9JA.  
T: 01732 884726

## Autumn Planting Time!



- Visit us for shrubs, trees, heathers, seeds and bulbs
- Compost, pots, logs, lawn feed and bird feed
- Gardening tools, planting accessories, fertilisers and plant feed
- Plaxtol apples, pears and raspberries
- Local cheeses, cakes and Simply Ice Cream
- Treat yourself to a coffee available in farm shop
- We stock frozen meals and desserts



**Open every day: 9am-5pm**

E: [sales@greenacresgardencentre.co.uk](mailto:sales@greenacresgardencentre.co.uk)



We stock **COOK** frozen meals and desserts



## PLAXTOL PEST AND WILDLIFE MANAGEMENT

rats... mice... bird control... squirrels... rabbits... wasps... hornets...  
flies... moths... cockroaches... bedbugs... fleas... moles... ants



All Pests Covered  
Fully Insured  
Fully Certified

Satisfaction Guarantee  
Value for Money

DBS Checked  
BPCA/RSPH Trained  
Electronic Fly Unit

DOMESTIC

COMMERCIAL

PEST PREVENTION CONTRACTS

Ciaran Payne 07368 605762

@PlaxtolPest f @

info@plaxtolpest.co.uk www.plaxtolpest.

designed by www.amazonsdesigns.com

# Hello Organ!

St Mary's Platt Church

**21st September 2025 16:30**



Come and enjoy organ  
and piano performance  
and musical talk given by  
the Director of Music of  
Lingfield parish church,  
St Peter and St Paul,  
Sara Skyrme, formerly the  
organist of St Mary's Platt.

Whether you know anything about church organs or not, come and find out!  
*All welcome.* Free of charge but there will be a voluntary retiring collection  
towards the church funds.

## THE IGHTHAM CLUB

Sevenoaks Road (next to the Village Hall)

**Fully Licensed Bar  
with outside patio garden**

**Pool, Darts, Snooker**

**Quiz and Music nights.**

**Plenty of car parking**

New Members/Guests welcome.

Feel free to just pop in for a drink  
and meet the team

Open from 7pm (except Mondays and  
Saturdays). Available for private hire.

**Contact Mark on 07517 548731  
with any enquiries**

## Clock Care Ltd.



Antique Clock  
Repairs & Restoration

**John Mathieson**

**Accredited MBHI**

**West Dean/BADA Diploma**

**Based in Tonbridge**

Tel: 01732 359006

E: [john@clockcare.co.uk](mailto:john@clockcare.co.uk)

[www.clockcare.co.uk](http://www.clockcare.co.uk)

EST. 1991

# BIRCH

## Construction & Property Maintenance

**Email - [tbirchltd@gmail.com](mailto:tbirchltd@gmail.com)**

**Tel - 01732 674317**

**Mob - 07789 797943**

**A local company for all your renovation  
and property maintenance requirements**



**Central Heating & Boiler Engineers**

**Gas \* Oil \* LPG**

*"you may not need a local & reliable boiler engineer today, just remember our name for the day you do"*



**Service Installation Repair**



**01732 885882**

**<https://www.samsian.co.uk>**

## **GF Harris Garden Maintenance**

Small local company (based in Platt) offering a reliable, friendly and professional garden maintenance service including one off, weekly, fortnightly or ongoing visits.

Services include: Lawn Mowing, Hedge Cutting, Planting, Pruning, Leaf Clearance and much more!

Free Estimates - Fully Insured

Contact Grant: 07532340210

Email:

[gfharrisgardening@gmail.com](mailto:gfharrisgardening@gmail.com)



## **Handyman**

All DIY work for reasonable rates

Painting and Decorating,  
Kitchen Fitting,  
Decking, Fencing,  
Sheds and all Carpentry work,  
Flat pack assembly,  
Jet Washing.

General property maintenance  
No job too small

**John Ballantyne**  
**Mobile: 07890 034846**





## Could you be a hero and share your skills?

There are lots of opportunities for you to make a difference and support your local community.

### \* **Green fingers?**

Lend a hand, tidying up the churchyard and supporting our local biodiversity.

### \* **Baking or tea-making skills?**

We offer a warm welcome at our Community Coffee Shop, after our Sunday morning services and at Breakfast@Church

### \* **Good with words or design?**

We're looking for help with the Parish Magazine - writing articles, editing or graphic design, there are a variety of ways to be involved.

### \* **Digital skills?**

You could help run powerpoint slides, press play for music during the services, help with the website and social media.

**If you could be a hero and help, email Naomi on [churchwardens@ighthamchurch.org.uk](mailto:churchwardens@ighthamchurch.org.uk)**



Website:  
[TheEcoPantry.co.uk](http://TheEcoPantry.co.uk)

*the eco*  
**Pantry**

Social media:  
[@ecopantryuk](https://www.instagram.com/ecopantryuk)

## Local Plastic-Free Refill Shop

food – toiletries – household

We are an independent plastic-free refill store on a mission to help you cut down single-use plastic waste. Bring your containers & fill them with eco-friendly, organic & sustainable products. Good for you, good for the environment.



**Bring your own  
containers & bottles**



**Fill them up**



**As much or as little  
as you like**

### Refill your:

Cereals, nuts, seeds, pasta,  
grains, baking, tea, coffee,  
cleaning products, haircare,  
body care, skincare,  
chocolate & more.

### Open:

Tuesday to Friday: 9–4  
Saturday: 9–3  
Sunday & Monday: CLOSED

Find out more at: [www.TheEcoPantry.co.uk](http://www.TheEcoPantry.co.uk)

### Find us:

Chart Farm,  
Styants Bottom Road,  
Seal Chart, Sevenoaks,  
TN15 0ES

or type 'The Eco Pantry'  
into Google Maps

**The summer holidays are nearly over and we are excited to be getting back to school!**

We are offering Puppy and Junior Classes, as well as Puppy Clubs, Advanced Classes and our BRAND NEW Heelwork Masterclass. Our first Heelwork Masterclass in September is now fully booked, so we have added another date.



**BEST BEHAVIOUR**  
SCHOOL FOR DOGS

### **Puppy Classes**

Wednesday 3rd September, 9.30am  
(Hythe)

Wednesday 10th September,  
4.30pm (Hythe)

Friday 5th September, 10.30am  
(Sevenoaks)

Saturday 13th September, 9.30am  
(Sevenoaks)

### **Junior Classes**

Wednesday 3rd September,  
10.30am (Hythe)

Wednesday 10th September,  
5.30pm (Hythe)

Friday 5th September, 11.30am  
(Sevenoaks)

### **Advanced Classes**

Saturday 13th September, 10.30am  
(Sevenoaks)

### **Outdoor Classes**

Puppy Club - Saturday 27th

September, 9.30am (Etchinghill)

Heelwork Masterclass - Saturday  
27th September, 10.30am  
(Etchinghill)

For more information or to book,  
please contact ...

E: [pippa@](mailto:pippa@bestbehaviourschoolfordogs.co.uk)

[bestbehaviourschoolfordogs.co.uk](http://bestbehaviourschoolfordogs.co.uk)

T: 07779 100204

[www.bestbehaviourschoolfordogs.co.uk](http://www.bestbehaviourschoolfordogs.co.uk)



**SAMARITANS**

Sevenoaks

## Do something you're proud of

As a Samaritans volunteer,  
you'll help us be there for  
people when it matters most.

## Volunteer with us

We will train, mentor and  
support you all the way.

To find out more and apply, visit  
[samaritans.org/volunteer](http://samaritans.org/volunteer)

Call 07388 179 760

Email [sevenoaks.recruitment@  
samaritans.org](mailto:sevenoaks.recruitment@samaritans.org)

A registered charity

**We need tea makers,  
activity planners,  
tidy-uppers and helpers  
for as little or as much  
time as you can spare.**

We meet every Wednesday evening to help our  
8- to 11-year-olds get going, get thinking and get stuck  
into all kinds of things to give them skills for life. Every now  
and then that may well mean using a compass, but more  
often than not it's about confidence, speaking up,  
thinking on their feet and going for it. Can you help?

[ighthamscouts.org.uk](http://ighthamscouts.org.uk) [James.r@ighthamscouts.org.uk](mailto:James.r@ighthamscouts.org.uk)



# ON CALL CARPETS

Your local company for reliable service & quality products at a price you can afford.

## Domestic and Commercial

Private Homes, New Buildings,  
Offices, Medical Centres,  
Dentists, Nursing Homes,  
Shops, Let Properties.



# 01732 886672

[www.oncallcarpets.co.uk](http://www.oncallcarpets.co.uk)

[sales@oncallcarpets.co.uk](mailto:sales@oncallcarpets.co.uk)

Choose in the comfort of your home or office - Quality fitting service, fully insured  
Call: ANDY to arrange a no obligation quotation at a time to suit you - day or evening



# MEDITATE

## *Happy thoughts for September* *How to have a ‘more healthy’ heart*

Gratitude may help you recover more quickly from a heart attack. So says a study by the University of California, who examined gratitude as part of an outlook that involves appreciating the positive aspects of life, and often goes hand in hand with spirituality.

It was found that people who have a life attitude of being grateful are also likely to have a better mood, better sleep, less fatigue, and lower levels of inflammatory biomarkers related to cardiac health. Researchers said they were surprised to find that gratitude accounted for such beneficial effects. As one scientist put it, “It seems that a more grateful heart is indeed a more healthy heart.”

How can you express gratitude in an easy-to-remember and daily way? Why not bring back the habit of pausing to say a simple grace of thanks before each meal? And why not take a few minutes to say your prayers before bed each night?

**Source: The Parish Pump**

## **Is Gen Z coming to church?**

Could it be true that a Quiet Revival (as the report is called) is taking place? Another reasonably large survey commissioned by the Bible Society’s research team suggests it could be. In March 2025 the Bible Society repeated a 2018 survey, asking 13,000 (19,000 in 2018) people if they went to church).

Perhaps to their surprise, but as suspected by others, and to the incredulity of still many others, they reported that attendance at church once a month in England and Wales



**Do more.  
Share more.  
Be more.**

[lghthamscouts.org.uk](https://lghthamscouts.org.uk)  
[James.r@lghthamscouts.org.uk](mailto:James.r@lghthamscouts.org.uk)  
[#SkillsForLife](https://twitter.com/SkillsForLife)

**Scouts**  
1st Lghtham

Copyright 2018 The Scout Association Registered Charity numbers: 86101/SC038437

had increased from 8% in 2018 to 12% in 2025, and the increase was mostly seen among those aged 18 to 34, defined generally as those born between 1997 and 2012; that is, those now aged 12 to 27 in 2024.

A more detailed breakdown showed that in every age-group, men are attending more than women, except for those aged 65 plus, where the percentages are equal. For men aged 18 to 24, this meant an increase from 4% in 2018 to 21% in 2024 and for women from 3% to 12%, respectively.

Whatever the reason some Gen Z people are coming to church, the report's findings agreed with other

studies - that churchgoers are often happier than those not going to church.

As for denominations, the Roman Catholic growth has been substantial and widespread. The April Daily Telegraph 'Features' supplement had the headline: 'The extraordinary resurgence of Catholicism in Britain', and explained, "Gen Z want to belong – modern life can be lonely .... They have digital friends but never meet them. They are crying out for community."

## 1ST IGHTHAM BEAVERS, CUBS AND SCOUTS



Thursday evenings  
6 – 8 years old  
[Ighthambeavers@gmail.com](mailto:Ighthambeavers@gmail.com)



Monday evenings  
8 – 10 ½ years old  
[Ighthamcubs@gmail.com](mailto:Ighthamcubs@gmail.com)



Friday evenings  
10 ½ – 14 years old  
[James.r@Ighthamscouts.org.uk](mailto:James.r@Ighthamscouts.org.uk)

All Sections are open to both boys and girls and operate an admission policy, please contact us as early as possible to have your child put on the expression of interest list, as all sections are always very popular.

The admissions manager email is [ighthambeaverlist@gmail.com](mailto:ighthambeaverlist@gmail.com)

Any questions about the Scout Group please email [James.r@Ighthamscouts.org.uk](mailto:James.r@Ighthamscouts.org.uk) or ring 07974 412932

[www.Scouts247.org.uk](http://www.Scouts247.org.uk)



**WEEKLY**

8.30 – 11.00am  
every Thursday  
St Giles' Church,  
Shipbourne

**LOCAL**

Seasonal produce  
and goods

**SUPPORTING**

Farmers, artisans and crafters



[www.shipbournefm.co.uk](http://www.shipbournefm.co.uk)

## PHONE SOCKETS



25 Years Local  
BT Engineer

**WHY PAY SERVICE PROVIDER  
PRICES FOR INTERNAL  
FAULT REPAIRS!**

New Telephone & Broadband  
Extensions and Improve BB  
Speeds. Phone Sockets For  
Sky TV. Cat5 Wiring.

Fault Finding, Rewiring  
& Socket Repairs.

Internal & External Re-routing / Tidying  
of Cables prior to Double glazing.  
Fully Insured. CRB Certificated.

**TEL: G. NUGENT  
07845 705900**

Are you organising a  
children's party? A talk?  
A disco? A yoga class? A  
wedding reception?

If so, why not think of using the  
**IGHTHAM VILLAGE HALL?**

Hire charges are highly  
competitive, and the space is  
perfect for all kind of gatherings.  
There is also ample and well-lit  
parking.

For further information contact  
Jenny Elliot  
E: [ighthamvillagehall@gmail.com](mailto:ighthamvillagehall@gmail.com)



# We're going on a GHOST HUNT

11 October  
to  
2 November

This Halloween the bunnies are setting off on an adventure. Join them to find the ghosts hidden around **Ightham Mote** with heaps of exciting things to see and do along the way.

[nationaltrust.org.uk/ightham-mote](https://nationaltrust.org.uk/ightham-mote)

BLOOMSBURY

© Bloomsbury Publishing 2023



# DIRECTORY

## St Peter's Church

Rector	Parish in Vacancy	
Church Warden	Naomi Webster	T: 07421 832919.
	E: <a href="mailto:churchwardens@ighthamchurch.org.uk">churchwardens@ighthamchurch.org.uk</a>	
Parish Office (Mon/Tue/Thur/Fri 9am-1pm)	Administrator	T: 07940 547310
	E: <a href="mailto:admin@ighthamchurch.org.uk">admin@ighthamchurch.org.uk</a>	
Licensed Lay Minister	John Webster	T: 884819
Lay Readers	Michelle Lawson	T: 01634 240598
	Bryan Harris (honorary)	T: 07733 228048
Hon. Treas/Gift Aid Sec.	Max Robinson	T: 885966
Safeguarding Officer	Finley Lawson	T: 01634 240598
PCC Secretary	Sarah Reid	
	E: <a href="mailto:pccsecretary@ighthamchurch.org.uk">pccsecretary@ighthamchurch.org.uk</a>	
Church Flowers	Judy Debenham	T: 882640
St Peter's Choir & Music	Carol Kennedy	T: 884764
Bell Ringing	Judith Robinson	T: 0788 0507066
Coffee Shop	Jenny Webster	T: 884819
Men's Breakfast	John Webster	T: 884819
Oasis	Bridget Kelsey	M: 07789 692967
	E: <a href="mailto:oasis@ighthamchurch.org.uk">oasis@ighthamchurch.org.uk</a>	
Parent & Toddlers	Kirsty Mitcham	T: 885072
Prayer Group	John Webster	T: 884819

## Ightham Magazine

Editorial	Penny Cracknell	T: 07811 066253
Advertising	E: <a href="mailto:stpetersadverts@btinternet.com">stpetersadverts@btinternet.com</a>	
Subscriptions/Distribution	E: <a href="mailto:magazine@ighthamchurch.org.uk">magazine@ighthamchurch.org.uk</a>	

## Community Groups & Events

Autism Parents Support Soc.	Claudia Goodman	T: 07773 599543
Ightham Club	Mark Brenta	T: 882104
Ightham Gardeners' Club	Pippa Coulthard	T: 883041.
	Dee Samways	T: 07799 002 129
Ightham School	D Sherhod, Headteacher	T: 882405
Ightham Village Hall	E: <a href="mailto:ighthamvillagehall@gmail.com">ighthamvillagehall@gmail.com</a>	
Ightham Scouts-		
Explorers & Scouts	James Reid	T: 789400
Cubs	E: <a href="mailto:ighthamcubs@gmail.com">ighthamcubs@gmail.com</a>	
Beavers	E: <a href="mailto:ighthambeavers@gmail.com">ighthambeavers@gmail.com</a>	
Ightham WI	Helen Johnson	
	E: <a href="mailto:ightham@wkwfwi.org">ightham@wkwfwi.org</a>	
PCSO	PC Dylan McElligott	T: 101 (non emergencies)

## Sports

Badminton Club	Nick Dennis	T: 882078
Cricket Club	Geoff Preston	T: 01474 812594
	Tom Bentall	T: 07712 566772
Football Club	Martyn Reardon	T: 07725 896 886
Tennis Club	Max Robinson	T: 885966

# It's time for a Macmillan Coffee Morning and you're invited

**Let's do whatever it takes  
to support people living with cancer.**

**Place:** St Peter's Church Centre  
Ightham TN15 9JD

**Date:** Wednesday 24th  
September 2025

**Time:** 10am - 11.45am

**Raffle**

**Bring and Buy Stall on the theme of Harvest**



**MACMILLAN**  
CANCER SUPPORT

 Registered with  
FUNDRAISING  
REGULATOR