

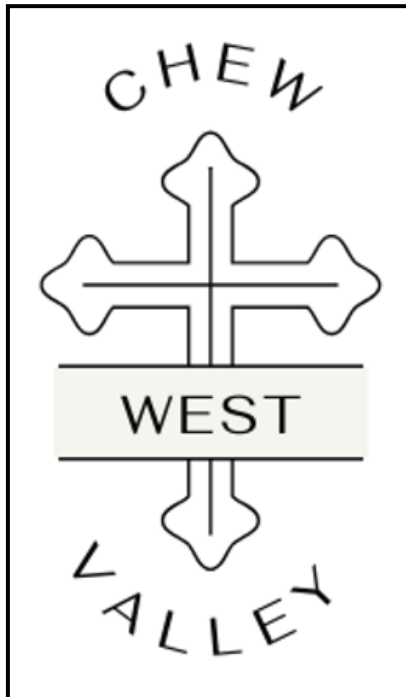
**Chew Stoke with
Nempnett Thrubwell
Parish News**

chewstokemag@gmail.com

Free for EVERYONE in the area

February 2022

www.chewvalleywest.org





Bath & North East
Somerset Council

Lending with Heart and Mind

Bath & North East Somerset Council fund a not-for-profit loan scheme for homeowners and landlords*.

We understand the expense of maintaining your home and we work with you to take the stress out of funding repairs, improvements or adaptations.

We see you as an individual, not a credit score. Our knowledgeable team of advisers will guide you through the process of applying for a home improvement loan.

For a no-obligation assessment or more information visit

www.lendology.org.uk or call 01823 461099

Heatherton Park Studios, Bradford on Tone, Taunton, TA4 1EU

*subject to eligibility

Chew Stoke Church Hall

AVAILABLE FOR HIRE
Suitable for private parties, group activities etc.

Regular Hire / Single Event Hire
Modern kitchen and toilet facilities, bar area and stage.

For availability see

chewstokechurchhall.org.uk

FFI phone 01275 332222 or online
c_boardman@icloud.com



WHEELCHAIR
FRIENDLY



Baby
Changing



I.D. MORGAN

Bristol Road,
Nr Chew Stoke



Building & Plastering • Stonework
Extension • Plastering • Pointing
Garage Roofing • Patios • Painting

Tel: 01761 221764

Mobile 07977 704195

Email: idmorgan250@gmail.com

NEMPNETT THRUBWELL VILLAGE HALL

is situated in a beautiful rural location with amazing views! It is an ideal venue for all types of functions and occasions, having extensive parking, level access, full disabled facilities, fully fitted kitchen, video/audio system and children's play area..

To book or for more details, please visit our Facebook page
or call 01761 462391



...the local professional agents who can assist you with all your property needs



Country Houses



Rural



Fine Art



Residential



Commercial

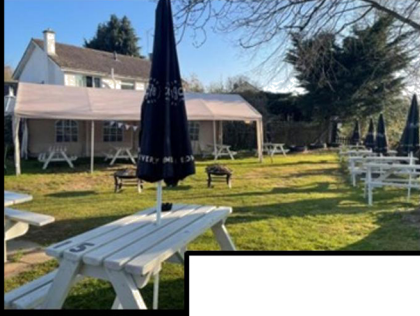


Equestrian

5 South Parade, Chew Magna, Bristol. BS40 8SH.
t. 01275 333993 | e. chewmagna@killens.org.uk

Offices also in Ston Easton, Wells & Knightsbridge
And at the Mendip Auction Rooms






EST. 1753

▪ THE STOKE INN ▪

PUBLIC HOUSE



Enjoy our covered courtyard & enclosed grass beer garden!

We are open daily!

Discover all of your favourite food and drinks here

| Breakfast | Lunch | Dinner | Tapas | Takeaways |

01275 332120 | Bristol Road, Chew Stoke, BS40 8XE

Chew Valley Osteopathic & Therapies Practice

01275 333587

www.chewvalleytherapies.co.uk

**Osteopathy
Chiropody
Massage Therapies**

Unit 2c Fairseat Workshops, Stoke Hill, Chew Stoke
(opposite Tony Hucker TV)



MICHAEL W. ROWE

FUNERAL DIRECTOR

A family business offering
personal service day or night



Rest Room facilities

2 The Vinery,

**Harford Square Chew Magna,
BS40 8RD**

michaelrowefunerals@outlook.com

Telephone: 01275 332565



TAI CHI QIGONG

Flowing movements to ease & relax body & mind

Monday	09:30 - 10:30 am	Compton Martin School Room <i>(next to St. Michael's Church)</i>
Tuesday	10:00 - 11:00 am	Blagdon Village Club
NEW Wednesday	09:30 - 10:30 am	Chew Stoke Church Hall

£7 per session

Please contact me to confirm availability

ZOOM Class

Monday	6:30 - 7.30pm	Online Zoom Classes - £6
---------------	---------------	---------------------------------

Mary Bancroft FwSS

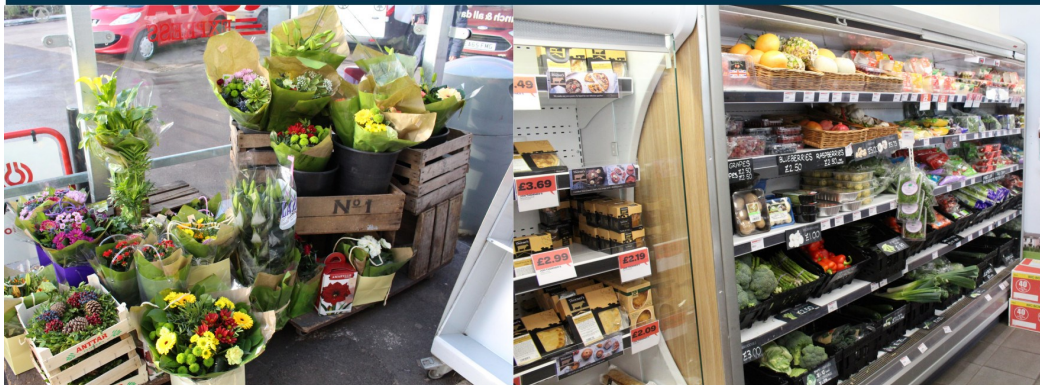
Tai Chi Qigong Instructor, Shiatsu, Reiki, Hopi Ear Candle Practitioner

Tel: 07749 407023

mary.bancroft@hotmail.co.uk

www.harmonyandhealing.co.uk

**MORE THAN
JUST A FORECOURT SHOP...**



OPEN EVERY DAY 6:30am-10:00pm

FIND US

CHEW ROAD, WINFORD, BRISTOL, BS408JH

VEG SHED SATURDAYS

We're now open every Saturday from 10am - 2pm at The Community Farm!



Come pick up fresh, local, organic food of the highest quality; stay for chit-chat and lush lake views.

the
community
farm.co.uk

The Community Farm, Denny Lane, Chew Magna, BS40 8SZ



TCFarm



TheCommunityFarm



thecommunityfarm

USEFUL CONTACTS

Chew Stoke Parish Council	Chairperson: Dick Raffety Clerk: SJ Streatfeild	01275 331102 07916 785348
Nempnett Thrubwell Parish Council Chew Stoke Church Hall www.chewstokechurchhall.org.uk	Clerk: A Johnstone Chairperson: Pete Wring Bookings Sec.: C. Boardman	07771 763557 01275 333720 01275 332222
Nempnett Thrubwell Village Hall Women's Institute Toddler group	Gill Ford Hazel Wedlake Sara Hindlle	01761 462391 01275 332812 07798 922683
U3A Intermediate Bridge Bowling Club Chew Stoke Golf Society Cricket Club Drama Club Chew Stoke School	Carol Hare Martyn Edmonds Nigel Roberts Ro Masters Andrew Tromans Headteacher: Ben Hewett Chair/Governors: Gill Baker	01761 221695 01275 474729 01275 333516 01275 331229 07710 163743 01275 332354 01275 333753
Chew Valley School Chew Valley Lake Sailing Club Chew Valley Choral Society Chew Stoke Film Club Harvest Home www.chewstokeharvesthome.org.uk Chew Valley Art Club Chew Valley Leisure Centre	Headteacher: Gareth Beynon Allen Marsh Helen Boyde Kim Heath Nick Baker Anne Holloman	01275 332272 01275 331143 01275 333014 01275 331711 01275 333753 01275 333143 01275 333375

MAGAZINE CONTACTS AND DEADLINES

Got some news? Want to advertise an event or your business?

You can get in touch with us either by

Email: chewstokemag@gmail.com

or contacting the Editor:

Cynthia K Troup 01275 333002

Handwritten entries can be delivered to Cynthia at

Fairwood, Pilgrims Way, Chew Stoke

Distribution: Suzanne McDonald Tel 01275 333130

Email suzanne@mcdonaldmccall.com

**The copy deadline for the March edition
will be
Friday 18th February**



Classes/Personal Training ONLINE!

In Lockdown and in real life after! We can help you get fit/toned

- * PILATES: for core strength
- * ZUMBA: easy dance fitness
- * BOOT-CAMP: Get fit and tone
- * PHYSIO with Bluesky
- * BODY WEIGHT CLASS: get toned
- * AEROBICS fun for all!

For info/free taster session: www.lynnejoynerfitness.co.uk

Email lynne.joyner1@gmail.com Tel 07748 963297

WHO'S WHO IN THE CHURCH

Vicar: Rev Dr Ian Mills 01275 474504 chewvalleywest@gmail.com

Churchwardens: Chew Stoke: Andrew Troup 01275 333002
Tina Kilroy 07920246322

Nempnett Thrubwell: Rosemary Porter 01761 462571
Nick Houlton 01761 462075

Capt. Bellringers: Chew Stoke: John Bone 01275 332328
Nempnett Thrubwell: Andrew Ball 01275 472356

Churchyard Maintenance: Chew Stoke: Anne Summers 01275 333812
Nempnett Thrubwell: Nick Houlton 01761 462075

Chew Stoke Childrens Group: Tina Kilroy, Angela White, Angela Hurford,
Sheila Limburn, Heather Patch, Cynthia Troup

Magazine: Editor: Cynthia Troup

Distribution: Suzanne Macdonald & Joanne Stephenson

Deanery Synod Reps: Chew Stoke: Jessica McInnes
Jerry Moorhouse
Nempnett Thrubwell: Rosemary Porter

PCC Secretaries:

Chew Stoke: Jessica McInnes Nempnett Thrubwell: Alison Howard

PCC Treasurers:

Chew Stoke: Peter Jameson Nempnett Thrubwell: Nick Houlton

PCC members:

Chew Stoke: Tina Kilroy, Peter Jameson, Jessica McInnes, Laura Down, Sheila Limburn
Andrew Troup (Vice Chair), Les Poynter, Jerry Moorhouse., Liz Wormald,
Sue Cook and Hazel Wedlake

Nempnett Thrubwell:

Jane Batten, James Everett, Geraldine Ford, Nick Houlton,
Alison Howard, Hugo King, Jane Oosthuizen and Rosemary Porter

Chew Stoke Sidespeople: Mesdames Limburn, Patch, Manville, McInnes,
Troup, Kilroy and Down

Messrs: Jameson, Murrant, Soper, Kilroy, Poynter and
Moorhouse.

Letter from our Vicar, the Rev. Dr. Ian Mills

Dear Friends,

One of the Church's lesser-known festivals falls on 2nd February: the Feast of Candlemas. It is the official end of the season of Christmastide, and a midpoint in our journey through the Church Year. On Candlemas Day, we find ourselves 40 days after the great Festival of Christmas, and 40 days away from the approaching season of Lent. As the manger in Bethlehem disappears in our rear-view mirrors, the cross of Good Friday and Resurrection of Easter comes into view.

As the name Candlemas suggests, this Feast Day has a strong connection with light. As people walking in darkness, we have seen a great light: the light of God revealed to us in Jesus. And yet, as St John's Gospel tells us, that light shone in our darkness and we did not understand it; this world of darkness could not bear the light of Christ, and tried to extinguish it on the cross.

There is a temptation in the way we use light in church and in our homes at this time of year that makes us associate light only with things that are cosy and comfortable. The glow of a candle-lit carol service, a roaring fire, or the joy of a Christingle candle reflected in the faces of children—yes, these are important lights that say something about who we are as a community of faith—beacons to others, drawing their senses and ours into a deeper, richer understanding of that faith. But those words of Saint John in the Christmas Gospel—the Light shining in darkness, and the darkness failing to understand it—speak to me of a very different sort of light. Those words speak of a searchlight: a powerful spotlight, a beam interrogating and penetrating the darkness of the world—a light shining fearlessly into the unknown.

We must remember that to sit in the light of Christ is often far from a cosy experience. This is a light that exposes us for what we really are; a light that shines on those parts of our lives that we would rather people didn't see—the parts that we would prefer to keep hidden from God. Rather than providing a comfortable hiding place, the Light of Christ forces us into a full-beam, head-on encounter with God. We see ourselves for what we really are, and we realise how much we need God's help in putting it right.

At Candlemas we read about Jesus being Presented in the Temple according to Jewish custom (St Luke 2: 22–40). Here, the Holy Family meet Anna and Simeon, two people who, after a lifetime of devotion and prayer, finally discover what it is like to have a close-up encounter with God in Jesus. The sort of encounter where, caught in the searchlight, we have nowhere to hide. The sort of encounter that made both of them take Jesus into their arms and praise God for the gift of Jesus.

Continued over leaf:

For us, today, perhaps the thought of such an intimate encounter with God is terrifying. We're not ready! There are parts of our lives, like the corner of the attic, that need a good sorting out.

We need to shine Christ's light upon it, and ask God to help us sort out the mess.

At Candlemas, we stand forty days away from Lent, the season where we traditionally give something up. Perhaps we might use this festival of Candlemas to get a head-start—we could, for a season, give up seeing God in the cosy candle-glow of a winter, and instead allow his light to search and uncover those broken relationships, our abuse of His creation, the staleness of our prayer lives—whatever the loving light of Christ will show up when we let it in.

So, the countdown to Lent begins. Let's let the light shine in so that we too, like Simeon and Anna, can take Christ in our arms with rejoicing.

Lord Jesus Christ,
light of the nations and glory of Israel:
make your home among us,
and present us pure and holy
to your heavenly Father,
your God and our God. Amen.

In Christ,

Tan K. Mills +

Nempnett Parish Council are delighted to report that thanks to a grant from the Tree Council 9 specimen trees (oak, disease resistant Elm and Silver Birch) have been planted around the village. They are at entry points into the village plus by the hall, church, commemorative seat and footpath to the lake.

So together with the saplings given to the children in the spring 55 trees have now been planted.

We would love to know how many other trees are being planted or have been planted in our village from March 2021 to March 31st 2022. So a chart has been made with stickers for any children to add to and will be on display at the village hall during Feb. The hall will be open on Saturday mornings during February. This number will then be registered as part of the Queen's Platinum Green canopy.

Any queries please contact Jane Batten 01761 462673 or battanjane9@gmail.com

Midweek Eucharist



Holy Communion with Intercessions for Healing is held in our group of parishes on the first and third Wednesdays of each month at 10.30am. Do consider joining our faithful group of midweek worshippers as we take time to pause, to pray and to share the Sacrament.

Wednesday 2nd February 2022 (The Presentation of Christ in the Temple)

St Katharine's, Felton at 10.30am

Wednesday 16th February 2022

St Andrew's, Chew Stoke at 10.30am

'Come to me, all you who are weary and burdened, and I will give you rest.'
(Matthew 11:18)

Ash Wednesday



The Penitential Season of **Lent** begins on **Ash Wednesday, 2nd March 2022**. Lent is an important time which prepares us for the great celebration of Easter. It is a season when we should take seriously our duty, repent of the sins which separate us from God, receive the assurance of God's forgiveness, and grow in faith and devotion to the Lord.

We will mark Ash Wednesday—the beginning of Lent—with the following services in our group of parishes:

Ash Wednesday, 2nd March 2022

St Katharine's, Felton – Holy Communion at 10.30am

St Andrew's, Chew Stoke – Holy Communion at 7.00pm

Ashes will be available at the end of these services, if it is your custom and tradition to receive them.

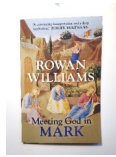
Prayer Request Box



The Prayer Box in St Andrew's, Chew Stoke has recently been reinstated. Please feel free to leave prayer requests at any stage and we will pray for you on Sundays and at our midweek celebrations of Holy Communion.

In the case of pastoral emergencies please contact the Rectory on **01275 474504**

Lent Bible Study



A **Lent Bible Study** focusing on **St Mark's Gospel** will be held on Monday nights during Lent. We will be exploring this fascinating Gospel using a devotional study guide by Rowan Williams, *Meeting God in Mark*. The book, like the Gospel itself, is short and accessible, and I am confident that you will find this course engaging, stimulating and spiritually refreshing.

Bible Study sessions will be held at The Rectory, 4 Parsonage Lane, Winford on the following dates, beginning at 7pm and lasting one hour:

Monday 7 March 2022
Monday 14 March 2022
Monday 21 March 2022
Monday 28 March 2022
Monday 4 April 2022
Monday 11 April 2022

However, you may wish to participate in these sessions by joining us live on **Zoom**. Whatever way you wish to participate, please register your interest by contacting Rev Ian at chewvalleywest@gmail.com or by phone: 01275 474504 on, or before Sunday 27 February 2022.

Copies of the study guide *Meeting God in Mark* cost £5 and can be ordered by contacting Rev Ian.

Community Choir



Chew Valley West Community Choir will return on **Thursday 24 February 2022** at **7.00pm**. (Please note the change from our usual day for this month only).

Our March session will be held on **Wednesday 16 March 2022**.

The Community Choir meet in St Mary & St Peter's Church, Winford at 7.00pm. There is no cost and all voice types and abilities are most welcome.

Sparklers

The next session of our pre-school group, Sparklers, will be held on **Monday 14th February 2022** in Winford Church at 1.45pm. Please spread the word to families who may be interested in an hour of fellowship, activities, conversation and refreshments.

Service of Wholeness and Healing

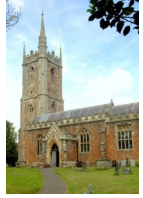
A special service of **Wholeness and Healing** for our group of parishes will be held on **Sunday 13 February in St Katharine's Church, Felton at 3.00pm**. This will be a quiet, contemplative service of readings, hymns and prayers through which we invite God's healing presence upon those who are sick or in any kind of special need. You may wish to attend in person, or on behalf of a friend or family member who is house-bound, or in nursing home, hospital or hospice care. Please be assured of a warm welcome.

Songs of Praise: Alleluia!

During the season of Lent, the Church traditionally strips back its joyful expressions of worship for forty days and nights. We do so to journey with Jesus through his temptation and fasting in the wilderness, through the events of Holy Week and towards the cross of Good Friday. Only then does the joy of the resurrection on Easter Day come into view!

Flowers are not displayed in church during Lent, and our hymns reflect the solemnity of the season. As such, we don't sing or say 'Alleluia!' between Ash Wednesday and Good Friday.

An Opportunity to Join the Parish Electoral Roll



The electoral roll has to be updated every year in March; please let us know if you would like to join this year. *If you were enrolled last year, you do not need to apply again.* **Joining the roll** is a practical symbol of commitment to our Church although there is no time or financial commitment involved.

We will contact you occasionally with information about services, in particular details of funerals & you can vote at the Annual Meeting.

Further details & an application form can be found just inside the church door or by application to the Electoral Roll Officer, Sara Hindle on 01275 331795. Forms must be returned by the beginning of April.

St Andrew's Soup Lunch Wednesday 2nd February

in the Church Hall Chew Stoke
from 12.30 till 2pm £5 (under 5's £1)

Home made soups and cakes

Fairtrade Stall

All ages welcome, high chairs available
Social distancing and masks on arrival please!

Benefice of Chew Valley West

Diocese of Bath & Wells February Services

	Sunday 6th Feb Fourth Sunday before Lent	Sunday 13th Feb Third Sunday before Lent	Sunday 20th Feb Second Sunday before Lent	Sunday 27th Feb Sunday next before Lent	Sunday 6th March Lent 1	Sunday 13th March Lent 2
CHEW STOKE St Andrew	6.30pm Evensong		6.30pm Even- song	10.30am Eucharist	6.30pm Even- song	10.30am Morning Prayer & Holy Bap- tism
NEMPNETT THRUBELL The Blessed Virgin Mary		9.00am Eucharist		6.30pm Even- song		9.00 am Eucharist
FELTON St Katharine	11.00am Eucharist	3.00pm A Service of Wholeness and Healing	11.00am Eucharist			11.00am Eucharist
WINFORD St Mary & St Peter	9.00am Morning Prayer	11.00am Eucharist		3.00pm Songs of Praise: 'Alleluia!'	11.00am Eucharist	
REGIL St James			8.30am Eucharist		5.00pm Even- song	

St Andrew's Church February Rota:

Flowers: 6th + 13th Feb: L Wormald (Altar & Lady Chapel) & 20th + 27th Feb: S Hindle (Altar) & Carol Rafferty (Lady Chapel). **Cleaning:** S Limburn & **Brass:** Bethan and Lowri.

Sunday 6th Feb Evensong at 6.30pm

Isiah6 vv.1-8 Reader J Moorhouse
St Luke 5 vv. 1-11 Reader L Wormald

Sidespersons: P Jameson & J McInnes

Sunday 20th Feb Evensong at 6.30pm

Genesis 2:4b-9, 15-end Reader: T Kilroy
St Luke 8 vv. 22-25 Reader S Hindle

Sidespersons: L Down & S Limburn

Sunday 27th Feb Eucharist at 10.30am

2 Corinthians 3 vv. 12-4.2 Reader: S Hindle

Sidespersons: S Manville & J McInnes

SCHOOL NEWS

Friends Around the World

Chew Stoke Church School has been busy over the last few months strengthening their partnership with Christian Life Primary School in Uganda as part of Connecting Classrooms through Global Learning, a unique global education programme.

Connecting Classrooms is run in over 30 countries by the British Council in partnership with the Foreign, Commonwealth & Development Office (FCDO). It works with schools across the globe to help young people develop the knowledge, skills and attitudes to make a positive contribution to their world.

The programme enables teachers not only to teach these skills to children in their classroom, but also to connect, via the internet, with partner schools in other countries to exchange insights and ideas on how to improve teaching and global learning in their schools.



Students from both schools have been working with each other on a number of exciting projects this year which include: finding out about each other's cultures, wildlife and habitats and about the quality of education in each country. During the project the pupils have been exchanging letters, pictures, photos and have set up their own online Padlet to share learning.

To finish off last term's project, the children from Chew Stoke Church School all made a Christmas card to send to their friends at school in Uganda alongside sending a special Christmas pencil for each child.

CV Recreational Trail at Woodford Lane - Councillors and Ward Cllr Warrington have been talking with Bristol Water and B&NES about the lack of access to the CV Recreational Trail from Woodford Lane. Discussions are continuing but we hope to get this resolved so that residents of Chew Stoke can access the path at this point.

Walley Lane across the dam towards Bishop Sutton is now closed, possibly until March 25th. The Parish Council and Ward Councillor have requested that even a partial opening (evenings and weekends) be permitted as soon as possible. We will update residents with any news.

Some trees in Rectory Field and Bilbie Playpark have ash die-back and they are due to be removed shortly. We will be replanting trees later this year, as part of the Queen's Green Canopy, which is part of the Platinum Jubilee celebrations, please contact the PC if you would like to be involved. <https://queensgreencanopy.org>

The June PC meeting is scheduled for June 2nd but this is now during the long Platinum Jubilee weekend, so the meeting has been rescheduled for June 9th.

The Parish Council is due to receive £250 from the Ward Councillors Empowerment Fund, this is to be spent on repairs to play equipment in Bilbie Road Playpark.

Please can we remind people not to park on the pavements as it causes an obstruction for pedestrians, especially those with pushchairs or wheelchairs.

If you see anything that needs mending or repairing, please report it to B&NES via www.fixmystreet.com

Next monthly Parish Council Meeting **Thursday 3rd February at 7.30pm** in the Village Hall, all welcome.

Chew Stoke Village Shop Survey: Results

Overwhelming support to once more have a village shop in Chew Stoke has been recorded in 204 completed surveys. If the daily grocery items and other produce listed on the survey was sold, 100% would use the shop - 63% weekly and 34% daily.

Over 80 households are willing to volunteer in a Community Shop model (rule of thumb for a Community Shop model is 30 volunteers). More than 60% are willing to contribute financially to set up/maintain a shop. 94% felt that if the shop at that site didn't reopen it would be a significant loss of local amenity and possible employment. Comments showed strong support to retain the current shop site due to its central location, passing trade and easier access for less mobile residents. With the site having had a shop historically for a significant time, 98% felt a community shop on the Bristol Road garage site would further the social well-being and social interests of the village.

The Community Shop working group made enquiries to the shop owners last October about the possibility of renting or buying the shop space, but were told that other interested parties were engaged in discussion. As yet, the working group has not heard whether this is progressing or not. Following the strong support from residents via the petition and survey, there has been a Parish Council vote in favour of applying for Asset of Community Value.

Clubs & Societies

CHEW VALLEY LOCAL HISTORY SOCIETY

The recent television programme “Digging for Britain”, presented by Professor Alice Roberts, stimulated me into thinking more about our treasured archaeological sites locally. Hill Forts aplenty; but for some reason my thoughts drifted towards pilgrims and pilgrimages. A pilgrim is usually thought of as one who travels to a shrine or holy place as a devotee and the pilgrimage is thought of as the journey being undertaken. Let's step back nearly 2000 years into our own local history!

At Pagans Hill, Chew Stoke and less than a mile from Chew Magna a Roman temple once stood. Thought possibly to have been dedicated to the Roman gods Apollo or Mercury. Said to have attracted pilgrims; no one really knows, but just imagine their journeys to this place. On terrain very different from now it was probably built towards the end of the 3rd century AD. At a time when Roman culture had permeated significantly throughout the country's population. This site was, however, not just Roman, as archaeological digs in 1949 and 1953 revealed. Artefacts representing the Iron Age and going right through to the 7th century AD were discovered. Some of the artefacts were 'curse tablets', from the Roman era, on which the 'pilgrims' asked the god of the temples to put a curse on or bring bad luck to another person. There is a brilliant collection of these on display at the Roman Baths. Nothing now to be seen apart from small irregularities in the landscape but how exciting to cast one's imagination back to what was a thriving hub two millennia ago!

Russell Peters. Tel: 01275332741 / 07976266427.

Email: russpeters@btinternet.com

Chew Valley Gadget Busters are back!!

February 16th 12.30-2.30 and the 1st and 3rd Wednesday of each month thereafter

Chew Valley Gadget Busters are restarting face to face sessions from the middle of Feb, thanks to some new volunteer recruits and The Queens pub in Chew Magna. Do you have problems using your laptop, iPad, tablet, phone or digital camera? Or do you want to make video calls or use WhatsApp to contact your friends and family, but don't know how? Perhaps you're worried about how to order supermarket and other goods on-line?

Visit **Gadget Busters** who are here to help. Either book an appointment by e-mailing cvgadgetbusters@gmail.com, or turn up on the day. We are holding 2 hour sessions on the first and third Wednesdays of each month, starting February 16th from 12.30-2.30 at The Queens, Silver Street, Chew Magna. Masks to be worn. It costs £3 per session, with proceeds going to charity.

We are still looking for more volunteers, so if you would like to become a Gadget Busters volunteer, please email cvgadgetbusters@gmail.com for more information.



Avon

Thursday 24th February 2022: Avon Wildlife Trust - Chew Valley
Group: MOROCCO - BIRDS & SCENES an illustrated talk by Mike Landen & Mark Watson on their travels from Marrakesh to the Atlas Mountains, the Sahara Desert and the Atlantic coast.

Chew Magna Old School Room, 7.45pm. Admission £2.50.

Harptrees History Society

Out of the Earth: Bath's Mineral Wealth, Coal, Stone and Clay.

Stuart Burroughs, Director of the Museum of Bath at Work, sees his job as championing the city's working heritage and local history. At the next meeting of the Harptrees History Society, he will be explaining how the mineral wealth of the city has determined its appearance and also sustained its needs for heat, light and commercial development.

The museum, in Julian Road, Bath, celebrates both the everyday and the workaday. You can enter the world of working Bath through a series of authentically reconstructed workplaces, workshops and display galleries. It is currently open weekends only and is well worth a visit.

West Harptree Memorial Hall, **Wednesday 23rd February**. Doors open at 7.15pm for 7.30pm.

Chairs will be socially distanced so that everyone will feel comfortable. Both members and visitors are asked to book a seat in advance, although there is no charge for members. Visitors are very welcome at £3 a head.

To book the available places, please email info@harptreeshistorysociety.org

Chew Valley Gardening Society

This friendly society meet on the second Thursday of the month at 8pm at Stanton Drew Village Hall where there is easy access and parking.

On Thursday 10th February

John Tucker will talk on 'Right Plant, Wrong Place' and there will be a competition for the loveliest pot plant

New members very welcome, just come along!
FFI jill.broadhead@cpsoutlook.co.uk



The hall was buzzing on January 19th when members old and new met for the first meeting of our 2022 programme.

16.2.22 We look forward to meeting Debbie Dillon, a physiotherapist specializing in women's health. Her talk is entitled "**What Every Woman should know - Pelvic Health**" An important topic for women of all ages, so if you are female do come along (Sorry no male guests for this meeting!)

7.00 for 7.30pm The Hall, Church Lane, Chew Stoke.

FFI. Tel: President Jan Osborne 07940818984 or Secretary Hazel Wedlake 01275 332812

Chew Valley U3A

Chew Valley U3A will hold its Monthly Meeting in Ubley Parish Hall at 10.00am on Mon, 21st February 2022, when Derek Holloman, of Chew Stoke, will present a talk about the Chew Valley Clockmakers. This promises to be an interesting talk, Derek having a depth of knowledge of local history. Members and guests are most welcome.

Supporting the Valley's School Children - Chew Valley School Society (PTA) 500 Club Lottery

Do you have a child or a grandchild at Chew Valley School? Or would you simply like to support the educational needs of the local children in the Valley, whilst being in with a chance of winning our monthly jackpot?

Supporting your local charity, the Chew Valley School Society (PTA), is simple.

Just sign up to be a part of our **MONTHLY 500 CLUB LOTTERY**

Like other charities, fundraising has been extremely hard due to the Covid pandemic, so we are extremely keen to boost our 500 club membership as this can continue through all Covid restrictions and also gives a nice bonus to our 3 winners each month, a real win-win situation!

From as little as £2 per month, you could be in the monthly draw.

For an application form or if you have any questions, please contact us at cvssociety@chewvalleyschool.co.uk or download an application form from the Society page under 'Parents' on the school website.

It's all run by a committee of local volunteers, so no funds go to third-party lottery organisers and all profits go straight to support the children's education.

We have helped to support our children's education in many ways over the years - for example, funding learning software, media equipment, counselling, revision sessions, educational and sporting equipment and laptops for home learning.

Many thanks for your support.

For information on The Chew Valley Art Group (previously known as the Litton Art Group) who meet at Chew Stoke Church Hall on Mondays please contact:

orchardhse@ukgateway.net



Contemporary Artists: Anthony Gormley and Amish Kapoor. Rosalind Whyte investigates comparative styles and techniques of selected works to the Arts Society Mendip on **1st March at 11.00 am.**, in Croscombe Village Hall (Zoom-links will be sent to all members). Guests welcome, on request to tasmendip.comm@gmail.com. A guest donation of £6 will be requested.



Danny's Dustaway Cleaning Services

**No job too big, no job
too small!**

Tel: 07340 338256

**Martin Giles
Chew Stoke Gardening
Services**

07894898817

**Grass Cutting
Hedge Trimming
Path and Patio Cleaning
Weeding
General Tidying**



PATTERSON ELECTRICALS

Chew Valley based Electrician

NAPIT Approved

Domestic & Commercial

Contact Ross to discuss your electrical requirements:

07786 382085

pattersonelectricals@hotmail.com

www.facebook.com/PattersonElectricals



TAXI!



Established 1991

PRIVATE HIRE

CARS FOR ALL OCCASIONS

LONG & SHORT JOURNEYS

SCHOOL RUNS

ACCOUNT CUSTOMERS WELCOME

4, 6 AND 8 SEATER VEHICLES

SUPERIOR CHAUFFEURS S & C CLASS

MERCEDES ALSO AVAILABLE

Nick Houlton
Antique Dealer

**Valuations for Insurance,
Probate & Family Division**

**Single items or complete
estates purchased.**

House Clearance Service

40 Years Experience

Telephone: 01761 462075

or 07766 752327



Mon to Sat: 10am - 4pm

Telephone: 01761 450 060

**THE SOAP
BAR CAFE
& GIFT SHOP**

**EXCELLENT COFFEE,
HOMEMADE CAKES,
LIGHT LUNCHES**

GORGEOUS GIFT SHOP

**On The A37, Upper Bristol Road,
Clutton, BS39 5TA.**

www.thesomersettoiletryco.co.uk

W.J. PEARCE & SONS

- * Local meat from
- * Local farms for
- * Local customers from
- * Local quality butcher



**Farm Fresh Turkey,
Free range & barn reared Chicken,
Wild Duck, Grouse & Pheasant
Locally produced Venison,
Beef, Lamb & Pork**

also

**Free range eggs, locally baked bread,
local honey and fresh vegetables**

*We cater for your individual needs -
phone us for that special occasion.*

Tel: 01275 332417

*"The valley butcher for valley people -
we are known for our excellent quality"*

YOUR ENGLISH GARDEN



Design • Build • Maintain

A Chew Valley based business that specialises in all aspects of
Garden Design
Garden Landscaping
Garden Maintenance

For discussions and quotes please contact:

Gavin English

Mobile: 07748968527, landline 01275 380150

Email: gavin@yourenglisgarden.com

www.yourenglisgarden.com

We are fully qualified and insured. References are available on request.



Your village flower & gift shop.

Call in and buy cut flowers,
'ready to go' bouquets, plants,
gifts and much more!

Open Monday to Friday

9am-4pm

We also supply flowers for weddings
and funerals.

Local delivery available.

Find us at:

Unit 5 Fairseat Workshops,

Stoke Hill, Chew Stoke,

BS40 8XF

www.classicflowerdesigns.co.uk

Tel: 01275 333095

West Heating & Plumbing

For all your domestic plumbing needs

**Friendly local
service, phone
Paul West for a
no obligation
quote**



Tel: 01275 333748
Mobile: 07717 411385
paulwest180@hotmail.com



Felling

FELLING: Dangerous or damaged tree? We can help. Many tree pruning and removal jobs are very unsafe for the average homeowner to do himself or herself. As professional Certified Arborists we have the necessary skills, equipment and fully insured and licensed to get the job done correctly and safely.

STUMP REMOVAL: Removed a tree in the past? Can't get rid of that pesky old tree stump? We can completely remove your old tree stumps using powerful machinery. Great if you want to free up some valuable garden space or just want to plant something new!

Reductions

REDUCTIONS: Healthy trees just keep on growing! When yours gets a little out of hand, we can reduce the height of the tree, and the outside dimensions to make it more manageable and let more light into your garden. We carry out our works to [British Standards 3998](#), so you can be sure we won't harm your tree... just give it a haircut!

own lifts

CROWN LIFTS: Low hanging branches getting in your way? Do you need to clear the branches off your property? We can remove low branches safely without damaging the tree so you can gain access to parts of your garden. We can lift the crown of your tree to your requirements

We cover Bristol and the surrounding area, just give us a call on **07764 633 003** or send an email to holroydtgs@gmail.com if you'd like a quote.

Orchard House

A home from home, for friends and family



Orchard House, Bristol Road, Chew Stoke, Bristol, BS40 8UB
Telephone: (01275) 333143 Fax: (01275) 333754
Email: orchardhse@ukgateway.net

Web Site: www.orchardhouse-chewstoke.co.uk



Absolutely Feet

Caring for your feet, in your own home.

Professional treatment of corns, callus, fungal infections, painful or thickened nails, diabetic foot care, nail trimming etc.

Joanne Nash MCFHP MAFHP
Insured & Registered Foot Health Professional

07881 530600
absolutelyfeet@hotmail.com

Tincknell
COUNTRY STORES
Bringing the Country to Life

OPEN 7 DAYS
Mon - Fri: 8am-5.30pm
Saturday: 8am-4pm
Sunday: 10am-4pm

Wells
Glastonbury Rd
BA5 1TH
01749 683150

Congresbury
Brinsea Rd
BS49 5JG
01934 832318

Both stores now stocking a
Huge Range of Footwear

Wellies - Safety Boots - Walking Boots - Equestrian



www.tincknellcountrystore.co.uk

TINTINNA LTD

**We can help get your message across,
whatever your audience.**

**Writing, web content, broadcast and
print journalism, research, analysis
and lobbying with insight.**

Ian and Sandy Bell
Summerfield, Bristol Road, Chew Stoke, BS40 8UB.
01275 333 128 – tintinna@aol.com
www.tintinna.com

PILATES

Classes in the Chew Valley villages

CHEW STOKE - DAYTIME

WEST HARPTREE - DAYTIME

UBLEY - DAYTIME & EVENING

BISHOP SUTTON - DAYTIME & EVENING



EMMA WALKER
PILATES

Please contact for availability

T 07747 600668

E enquiries@emmawalkerpilates.co.uk

www.emmawalkerpilates.co.uk

Serving The Chew Valley Area: Chew Valley Library

The Old Chapel, Bishop Sutton
Near the post office with off street
parking in the chapel grounds.
www.chewvalleylibrary.org.uk

Library now open for browsing and for
collection of pre-ordered books.
The Library is now a distribution point
for COVID lateral flow test kits

Thursday Afternoon
2 pm till 4-30 pm
Saturday Morning
10am till 12 noon

Café reopened with waiter service!



Chew Valley IT

www.ChewValleyIT.co.uk

Your local IT expert in the Chew Valley

- ✓ Broadband & WiFi problem solving
- ✓ Laptop & Network
- ✓ Computer advice, help & lessons
- ✓ Home Entertainment & Technology
- ✓ PC Builds & Upgrades
- ✓ IT Help & Support
- ✓ Website Design & Build
- ✓ PC Repairs and Servicing
- ✓ Home Security
- ✓ IT Security & Viruses

Contact Callum for a no obligation quote

Office - 01275 333003

Mobile - 07943 232635

Email - callum@chewvalleyit.com

CHIMNEY

SWEEP

ROB HEMBROW

01934 732998

ESTABLISHED OVER 20 YEARS



CHEW VALLEY

ELECTRICS LIMITED

- All work & qualifications up to date
- Comply with 17th edition
- Over 30 years experience



Tel: 01761 490952 • Mobile: 07792 758321 24 hrs

The Old Sty, Nursery Farm, Pensford, Bristol BS39 4NB

Hudson

Heating Plumbing Supplies & Services Ltd



BRISTOL drains ltd

For a genuine plumbing, heating or drain enquiry, a 24 hour call-out service is available 365 days a year. Please feel free to call us for a no-obligation, highly competitive quotation at fixed hourly rates.

HUDSON PLUMBING AND HEATING SERVICES LIMITED

Tel: 0117 902 5820 • Fax: 0117 964 4666

Email: info@hudsonplumbing.co.uk

Hudson Plumbing & Heating Services is a well-established local business located in the Bristol area.

With over 20 years' experience, we have built up an enviable reputation for quality workmanship, high levels of customer care, reliability and value for money across the building maintenance market.

- Central Heating installation • Shower Room installations
- Wet Room Specialists • Boiler System Upgrades
- Annual Service Contracts • Local Authority Approved
- Boiler Servicing & Repairs • Bathroom installations
- Kitchen Plumbing • Bespoke Adaptations for Disabilities
- Building Refurbishments • Extensions • Fencing



BRISTOL drains ltd

Tel: 0117 940 0074 •

Fax: 0117 964 4666

Email: info@bristoldrains.com

At Bristol Drains, you can be assured of first-class work carried out by our own experienced and professional engineers. Whether you have a blocked drain at your home or your office, you may require a buried drain traced/located – CALL US NOW

- Waste Pipes • Unblocking of Toilets/Sinks/Baths • Water Jetting
- Septic Tanks • Drain Repairs and Replacements
- Gully Emptying • Camera Surveying and Reports
- Domestic Drain and Pipe Cleaning • Sewer Cleaning



JOANNA TILEY

ESTATE AGENTS

01275 33 33 11
info@joannatiley.com
www.joannatiley.com

Fairseat, Chew Stoke, BS40 8XF

If you are thinking of
Buying or Selling now or in the future
please speak to Joanna.

Free Valuations

Imagination

Dedication



Delivery

Three superb offices:

Congresbury Office
Bridge House,
High Street
Congresbury,
BS49 5JA

01934 862370
salesadmin@debbiefortune.co.uk

Backwell Office
2-4 Dark Lane
Backwell
BS48 3NP

01275406880
backwell@debbiefortune.co.uk

Lettings:
01275406370
lettings@debbiefortune.co.uk

Chew Magna Office
9 South Parade
Chew Magna
BS40 8SH

01275 333888
chewsales@debbiefortune.co.uk



Over 40 years' experience in your
local property market, covering:

Property Sales

Lettings and management

Land and New Homes

Auctions

Mortgages

Members of the Guild Property Professionals - all our
homes are available in our associated Park Lane Office
on 0207 4098449.

A service you can trust

debbie fortune

ESTATE AGENTS

www.debbiefortune.co.uk



*This magazine is printed by Geni Printing
Tel: 01275 333895 info@geniprinting.co.uk*