

**FREE**

# **The Haltwhistle Herald**

**MAY 2026**





### CLASS ONLY MEMBERSHIPS

Free admission to centre run exercise classes.  
Free use of our Changing & Shower facilities.

£ 27

### CENTRE MEMBERSHIPS

Unlimited use of our Fitness Suite  
Free Gym Inductions.  
Free admission to centre run exercise classes.  
Free use of seasonal swimming pools during public sessions.  
Discounts on most centre activities / hirings.

£ 38

### GYM ONLY MEMBERSHIPS

Unlimited use of our Fitness Suite  
Free Gym Inductions.  
Free use of our Changing & Shower facilities.

£ 27

VISIT US ON  
[WWW.HALTWHISTLELEISURE.CO.UK](http://WWW.HALTWHISTLELEISURE.CO.UK)

CALL NOW  
01434 320727

Prices are for Direct Debit Memberships.  
Casual cash membership prices may vary.

# Contents

- 4/5 What's on this month
- 6 Welcome from the Editorial Team
- 9/10 Haltwhistle Partnership
- 13/14 Haltwhistle Town Council
- 15 Chamber of Trade
- 18 Local Hero
- 20 View From The Vicarage
- 21/22/23 Parishes by the Wall West
  - 24 Methodist Church & Churches Together
- 25/26 Out & About
- 29/30 Culture & Arts
- 33 Haltwhistle Horticulture
- 35/36 Hidden History
- 38 Health Matters
- 40 Next Generation
- 41 Sports
- 43 Directory



# What's on in May

- 1st** Mayday Fair, 4-6pm, Market Sq and Main Street
- 1st** Celebrating 100 years at Armstrong's - pop into the shop
- 2nd** Coffee Morning, Haltwhistle Town Council, Methodist Village Hall
- 6th** Poetry Drop-in, 1:30-3pm, Greenhead Village Hall
- 7th** Stories & Rhymes - 0-5yrs, 1-2pm, Warm Welcome, Methodist Church Hall
- 8th** Over The Wall Players - 'Rambles on Radio,' £10, see p31
- 10th** Hadrian's Wall Farmers Market, 10-1:30, Greenhead
- 11th** Gardening Club Talk - Looking after Houseplants, 7:30pm, Comrades Club
- 12th** Gentle Walk & Draw workshop with Joe Richardson, 12:30pm, Field Shelter, Shield Hill
- 13th** History & Heritage Group AGM, 6:30pm, Comrades Club
- 15th** Men's Brunch for over 50s, 10:15-12, Hillside 33 Park Avenue
- 16th** Coffee Morning, Henshaw Nursery, Methodist Village Hall
- 16th** Councillor Surgery, 10-12, Town Council Office, Station Platform
- 16th** The Gospel of Mark dramatic presentation, see p22
- 17th** Community Litter Pick, 10-12, Market Sq
- 18th** The Great Sale for the Memory Cafe, 10:30-3:30pm, Hospital Community Room
- 18th** Shopping Club for the Over 50s to Hexham, £10, see p25
- 23rd** Coffee Morning, Bowls Club, Methodist Village Hall
- 30th** Open Day & Meet the Artist - Katie Lock, 11-3pm, Field Shelter, Shield Hill
- 27th-31st** Free Family Activities - Music and Storymaking, Greencroft Threshing Barn, see p29

# Regular Events

**Churches Together - Praying Together:** Every Monday, 10:30am, Holy Cross

**Haltwhistle Memory Café:** First Monday of the month, 2-4pm, Community Room

**Greenhead Art Club (also crafts):** Every Monday, 1:30-3pm, Village Hall

**Greenhead W.I.:** Every second Monday 7pm, Greenhead Village Hall

**Henshaw W.I.:** Every Monday 11-3, All Hallows Church Room

**Older People's Project:** Every Tuesday, 10am-12noon, Drop In, Methodist Church Hall

**Family Cafe:** First Tuesday, 2-3pm, Drop-In, free refreshments, Family Hub

**Warhammer Club:** Every Tuesday, 5-7pm, Bonnie's Cafe

**Mothers' Union:** Every second Tuesday, 2:15pm, Holy Cross

**Bardon Mill Film Night:** Every third Tuesday, 4pm in the church room

**Community Gardeners:** Every Wednesday, 9.45am-12.30pm, meet behind Pillar Box Cafe

**Knit & Natter:** Every Wednesday, 2pm, Haltwhistle Library

**Craft & Chat:** Every Wednesday, 2pm, Holy Cross

**Haltwhistle Friendship Group:** Every Wednesday, 1-3pm, Community Room

**Armchair Warriors exercise classes,** every Thursday 10-11am, Haltwhistle Library Hub

**Haltwhistle Growing Together,** every Thursday 10-12, Hillside Youth and Community Space

**Haltwhistle W.I.:** Every 1st Thursday 7:15pm, Comrades Club

**Calico Hinnies:** Every 4th Thursday, 10:00-2.30pm, Greenhead Village Hall

**Men's Brunch:** Every 3<sup>rd</sup> Friday, 10:15-12, Hillside Park Avenue, Free

**Badminton For All:** Every Friday, 10am-12noon, Haltwhistle Leisure Centre

**Stay and Play:** Term Time Fridays, 10.00am-11.30am (drop in), 0-5yrs, Family Hub

**ZigZag Days:** Alternate Fridays, from 10am, for info call Sue 07935 259 416

**New Hadrian Singers:** Every Friday, 7pm, Hospital Community Room

**Haltwhistle Art Club:** Every Friday, 10.30-2:30pm, Methodist Church Hall

**Greenhead Dominos Night:** Every Friday, 7pm, Greenhead Village Hall

**Breakfast Club:** Last Sunday of the Month, bacon butties, tea and coffee, 9am-1pm, Greenhead Village Hall

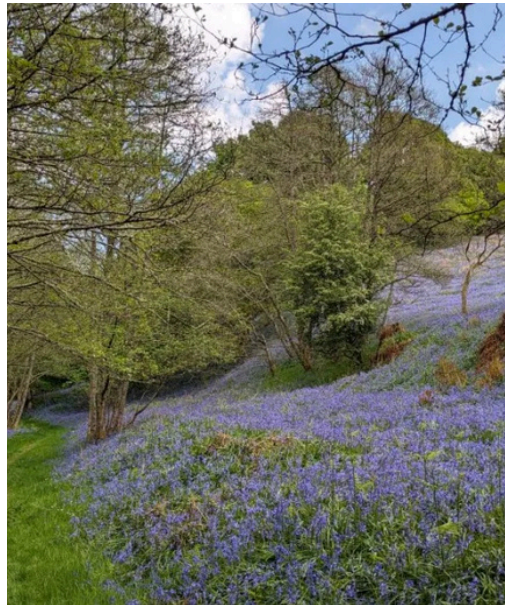
# From The Editorial Team

Here is your May edition of the Haltwhistle Herald and a shout out to Carol Edwards who has supplied us with this month's front cover. Thank you Carol for capturing another beautiful view of our local area. We really do live in a stunning part of the country!

Our big celebration this month is 100 years of Armstrong's Fashion on Main Street. You can read the history of this truly local business over the last 100 years on pages 35 and 36. Drop into the shop on Friday 1<sup>st</sup> May, share in the celebrations and pass on your best wishes to Catherine, her family and team. You are sure of a warm welcome and some refreshments.

Also on Friday 1st the May Day Fair will be taking place from 4-6pm, see page 15. Thank you to the Chamber of Trade for organising this event and we are informed there will be a traditional May pole, stalls and rides as well as extended shopping hours until 6pm. Let's hope for a lovely sunny afternoon as we look for the arrival of summer.

We have launched our new look back page of old photographs of Haltwhistle and the local area. Appropriately, this month we have printed an old picture of Armstrong's shop front. We would love to hear from you with any old photos, postcards or pictures you might have. You know what you have to do....get hunting and see what you can turn up and send them to us - either by email, details at the foot of the page or leave in an envelope at the library. Thank you



Our next edition will be June so contributions need to be with us by the **20th May** at the very latest please, maximum 250 words with a couple of pictures. To send contributions or to contact us email [haltwhistleherald@gmail.com](mailto:haltwhistleherald@gmail.com)

# Billy Bell

**Game, Fishmonger and Fresh  
Fruit & Veg**



Also a good selection of  
sausages, homemade pies  
and pastries

Over 20 different home  
made jams, curds and  
chutneys



01434 320253  
Market Square, Haltwhistle



Sales, Lettings & Holiday Cottages in Northumberland



Northumberland Office

Westgate Chambers, Haltwhistle, NE49 9AQ  
01434 322 277

info@pennine-ways.co.uk      www.pennine-ways.co.uk



The  
**Hadrian's Wall  
Farmers' Market**  
at **GREENHEAD**

**Local foods and crafts**

**Second Sunday every month**

**10.00—1.30**

**Greenhead Village Hall**

Home made cake and teas available

For more information contact:

Howard Maxted 016977 47855



*"Serving Good Vibes"*

**DELUXE SUBS, SMASH BURGERS, WRAPS, DAILY SPECIALS AND FRESH BAKED GOODS.  
AVAILABLE TO CATER LUNCHES AND PARTIES OF ANY SIZE, ANY TIME!**

MAIN STREET

HALTWHISTLE NE49 0AZ

ORDER ONLINE [WWW.THEYELLOWBIRDCAFE.COM](http://WWW.THEYELLOWBIRDCAFE.COM)

TUESDAY - SATURDAY

10AM - 3PM



Greenhead

Tearoom



Open Monday to  
Saturday 10am-3pm



Fresh home bakes food  
and treats available  
every day



Afternoon Tea available  
with 48 hour notice



Buffets and outside  
catering available for  
up to 50 people



**Pasture-fed beef**  
from Galloway cattle  
born and reared at  
Moss Peteral.

Value boxes and  
bespoke orders

07935 259 416 [sue@mosspeteral.com](mailto:sue@mosspeteral.com)  
[www.mosspeteral.com](http://www.mosspeteral.com)



Cutting  
Colouring  
Styling  
Hair extensions



01434 321152

[thehairdesignershaltwhistle@outlook.com](mailto:thehairdesignershaltwhistle@outlook.com)[the\\_hairdesigners](https://www.instagram.com/the_hairdesigners)

Manicures  
Tanning  
Waxing  
Massage



01434 321152

[The Beauty Room](https://www.facebook.com/TheBeautyRoom)

Sports Massage  
Acupuncture  
Rehabilitation plans  
Exercise Plans



07857485611

[ewanmitchell024@gmail.com](mailto:ewanmitchell024@gmail.com)[Ewan\\_spt](https://www.instagram.com/Ewan_spt)

# Haltwhistle Partnership

## Community Shops Fund

The Community Shops Fund has now closed for this round, and all applications have been carefully assessed against the established criteria. Successful applicants have been notified, and a full list of recipients will be published in the next edition of the Haltwhistle Herald.

This fund continues to be made possible thanks to the generosity of local donors, as well as the ongoing dedication and hard work of volunteers at both the Community Shop and the Community Bookshop. Their combined efforts ensure that vital resources can be directed toward projects that bring real, lasting benefits to the local community. From supporting grassroots initiatives to enabling new ideas to take shape, the fund plays an important role in strengthening community life.

If you weren't successful this time - or didn't have the chance to apply - there's no need to worry. The next funding round will open on 14th September, offering another opportunity to put forward your project. Further details on eligibility, application criteria, and how to apply will be available on our website [www.haltwhistle.org](http://www.haltwhistle.org), so keep an eye out for updates.

**JOIN OUR VOLUNTEER TEAMS**

Could you spare half a day each week?  
We're looking for volunteers to join our fun & friendly Community Shops teams.  
No experience is necessary — training and support will be provided.

Pop into the Community Shop or Community Bookshop to find out more!

# Haltwhistle Partnership

## Employment Opportunities

Applications for the Administrative Assistant position have now closed. All submissions are currently under review, and shortlisted candidates will be contacted in the first half of May with details of interview times.

Meanwhile, applications remain open for the Green Development role until 9th May. This is an exciting new opportunity focused on enhancing and reimagining green and underused spaces across Haltwhistle. The role aims to deliver a wide range of benefits, including environmental improvements, increased biodiversity, and stronger community engagement, helping to create spaces that can be enjoyed and valued by local residents. We are seeking a motivated and enthusiastic individual with a background in environmental sustainability or community-led projects. Knowledge of areas such as biodiversity, food growing, or green space development would be highly beneficial. Experience of working collaboratively with volunteers or community groups is also important, as the role will involve building partnerships and supporting local involvement in shaping and maintaining these spaces.

If you are passionate about making a positive impact on the local environment and community, we encourage you to apply before the closing date.

For further information or to apply, please contact the Partnership Officer:

Landline: 01434 321242

Mobile: 07307 107436

Email: [admin@haltwhistle.org](mailto:admin@haltwhistle.org)



**THE OLDER PEOPLE'S PROJECT**

**Volunteers Needed!**

**DROP-IN & LUNCH CLUB**

**Tuesday mornings from 8.30am**

Looking for an easy way to give back and brighten someone's day? The Older People's Project is seeking friendly volunteers to help serve tea and coffee.

Join a welcoming team, enjoy good conversation, and help create a warm, relaxed space where older people feel valued and connected.

No experience is needed—just a positive attitude and a little time to spare. Every bit of help makes a real difference.

For More Information contact: [olderpeoplesproject@haltwhistle.org](mailto:olderpeoplesproject@haltwhistle.org)

CHARITY NO: 1022486



The Milecastle Inn is one of Britain's most historic Inns – located beside the world famous Hadrian's Wall – since the 1600s.

Warm cosy welcoming atmosphere

Delicious home-cooked food

Real ales

Booking recommended

01434 341248

[www.milecastle-inn.co.uk](http://www.milecastle-inn.co.uk)



[www.theblackbullhaltwhistle.co.uk](http://www.theblackbullhaltwhistle.co.uk)

Enjoy our fine ales, great bar meals  
& Sunday lunches.

Private functions catered for  
Covered outside heated areas  
Accommodation

Prop. Martin **T. 01434 320463**

Casque Marque Approved



# Haltwhistle Gardening & Landscaping Suppliers

W: [www.haltwhistlegardenandlandscapesupplies.co.uk](http://www.haltwhistlegardenandlandscapesupplies.co.uk)

E: [HGLS@ritemixltd.co.uk](mailto:HGLS@ritemixltd.co.uk)

T: 01434 322623

Situated at

Ritemix Ltd., Lyntleydale,

Townfoot, Haltwhistle, Northumberland, NE49 0ND

*Secrets*  
BEAUTY SALON

MAIN STREET  
HALTWHISTLE  
NORTHUMBERLAND  
NE49 9AE

T: 01434 322100  
M: 07854 121238

E: [secretssalon123@yahoo.co.uk](mailto:secretssalon123@yahoo.co.uk)

*Natalie Jackson*



just flowers



Flowers For All Occasions

Main Street, Haltwhistle,  
Northumberland, NE49 0BH  
01434 320283

[info@justflowershaltwhistle.org.uk](mailto:info@justflowershaltwhistle.org.uk)

# Town Council



THE HALTWHISTLE HERALD  
**Haltwhistle Town Council**  
 Your Council. Your Community. Your Voice.

May 2026  
 Community Update

DON'T MISS

## Annual Town Meeting

 Tuesday 19th May 2026

 6:30 pm

 Haltwhistle Library, First Floor

*Hear from your councillors · Share your views · Shape your town · All residents welcome*

CEMETERY NOTICE

### Headstone Safety Inspection — Action Required

The Haltwhistle & District Joint Burial Committee has completed a safety inspection of the cemetery. A number of headstones have been found to be unsafe and have been marked with a **yellow warning label**. Families are asked to contact the Burial Clerk to discuss how to arrange for these memorials to be made safe.

⚠ Some headstones posing an urgent and immediate risk have been removed for health and safety reasons. Families will need to work with the Burial Clerk and an approved monumental mason to reinstate these memorials safely. **All remedial works must be completed by 3rd December 2026.**

 Burial Clerk: Emma Ackroyd | [burialclerk@haltwhistletowncouncil.org](mailto:burialclerk@haltwhistletowncouncil.org) |  07818 915171

COMMUNITY CONCERN

### Graffiti & Antisocial Behaviour — We Need Your Help

The Town Council has noticed a concerning increase in graffiti in the area. The cost of repairing this damage falls to the Town Council — money that could otherwise be spent on improving your community. We urge anyone who witnesses graffiti or antisocial behaviour to report it to police on the non-emergency number:

NON-EMERGENCY POLICE NUMBER

# 101

*Your report really does make a difference. Together we can keep Haltwhistle the community we are all proud of.*

# Town Council



## Community Events — May 2026

Haltwhistle Town Council

2ND MAY 2026

Friday

9:30 – 11:30 am

The Methodist Church

### Coffee Morning

Join your Town Councillors for a relaxed morning of cake, coffee, and conversation. Whether you have a concern to raise or simply want to meet your representatives, all are very welcome. A great chance to find out what the council has been working on and to have your say on matters that affect your community.

*All money raised goes directly back into the community.*

16TH MAY 2026

Saturday

10:00 am – 12 noon

Town Council Office,  
Station Platform

### Councillor Surgery

Want to speak directly with a councillor? Drop in to our Councillor Surgery on Saturday 16th May. Whether you have a local issue to raise, a question about council business, or simply want to find out more about what your council does — no appointment is needed, just come along and talk to your local representatives.

*Your concerns matter to us.*

17TH MAY 2026

Sunday

10:00 am – 12 noon

Meet at the  
Market Place

### Community Litter Pick

Help us keep Haltwhistle tidy and looking its very best! Join fellow residents for a community litter pick. **Gloves, bags and refreshments will all be provided** — just turn up ready to help. Whether you can spare an hour or the whole morning, every bit of effort makes a real difference to our town.

*Meet at the Market Place at 10:00 am sharp.*

### Report Antisocial Behaviour

Vandalism and antisocial behaviour cost our community real money. Repairs to council property must be funded from the council budget — money that should be spent on local services for everyone in Haltwhistle. If you witness graffiti or antisocial behaviour, please report it immediately:

NON-EMERGENCY POLICE

**101**

STAY CONNECTED



[www.haltwhistletowncouncil.gov.uk](http://www.haltwhistletowncouncil.gov.uk)

Council information,  
agendas & minutes

# Chamber of Trade

The Easter Afternoon Tea, held in support of the Christmas Lights, was a tremendous success, raising an impressive £1,585 towards the cost of installing and maintaining the festive display for the upcoming Christmas season.

The event brought together residents and visitors alike for an enjoyable afternoon, and its success is a testament to the strong community spirit that continues to make these initiatives possible. Special thanks go to Christine Dover, along with the dedicated team of volunteers, whose hard work and careful organisation ensured the event ran so smoothly. From preparation to hosting on the day, their efforts were instrumental in creating such a welcoming and successful occasion.

We would also like to extend our sincere appreciation to everyone who attended and contributed. Your generosity and support play a vital role in making the Christmas Lights display a reality each year. Without the continued involvement of the community, this much-loved festive feature simply would not be possible. An additional £175 has also been raised through the donation boxes located throughout the town, further contributing to the overall fundraising total.

These small but steady contributions make a real difference, demonstrating how even loose change can quickly add up to support important community initiatives. The generosity shown through these everyday donations plays a valuable role in helping to fund and sustain the Christmas Lights display. If you happen to pass one of the collection boxes, please consider dropping in any spare change. Every contribution, no matter how small, helps to keep these much-loved community efforts shining bright year after year.



You Are Invited To

## Haltwhistle May Day Fair

Celebrate the season of renewal and blooming beauty at our May Day Fair.

**May pole | stalls | rides**  
**| garland stringing |**  
**| 100 years of Armstrongs |**  
**| Extended shopping hours |**

Friday | May 1<sup>st</sup> | 4-6pm  
 Market Square & Main Street  
 Haltwhistle

# HEXHAM

## CENTRE

HEXHAMS ONLY DEDICATED  
CLASS 4 MOT TESTING CENTRE

01434 602 602

[www.hexhammotcentre.co.uk](http://www.hexhammotcentre.co.uk)



TAKE A PIECE OF  
**HALTWHISTLE**  
HOME WITH YOU

**UNIQUE . HIGH - QUALITY  
MERCHANDISE**

BASED IN THE HISTORIC TOWN  
OF HALTWHISTLE

THE FIRST AND ONLY  
**CENTRE OF BRITAIN  
SOUVENIR PROVIDER!**

BROWSE AND PURCHASE  
OUR RANGE OF  
HIGH QUALITY PRODUCTS  
FROM OUR WEBSITE



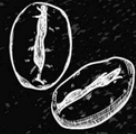
ebay ALSO FIND US HERE

[www.CENTREOFBRITAIN.com](http://www.CENTREOFBRITAIN.com)



# JETHROS

## Cafe & Takeaway



OPEN MONDAY - SATURDAY  
SERVING



**Breakfast**

**Sandwiches**

**Paninis**

**Burgers & Fries**

**Jacket Potatoes**

**Salad Boxes**

**Coffee & Teas**

**Homemade Sweet Treats**

**Bubble Tea**



Market Square

Haltwhistle

NE49 0BQ

01434 321086



HOMEMADE BAKES

PRE-ORDERED AFTERNOON TEA

HOUSE OF MEG TEA ROOMS  
GILSLAND

OPEN MONDAY - SUNDAY  
10.00AM - 3.00PM  
CLOSED WEDNESDAY



LIGHT LUNCHES



TEL: 01697747777



# Local Heroes

## Tynedale Hospice at Home

Tynedale Hospice at Home provides expert end of life nursing care, including overnight care, enabling individuals to be cared for with comfort and dignity in their own homes. Being able to stay in familiar surroundings, close to loved ones, treasured belongings, much-loved pets, and the everyday sounds of home, helps people feel safer, more settled, and more themselves during an incredibly difficult time. This is available to the people of Haltwhistle.

They offer the following all free of charge, not means tested, but based solely on need:

Nursing care at home delivers skilled, compassionate support with symptom management and personal care. Patients can remain where they feel most at peace, surrounded by the routines, memories, pets, and comforting sounds that make home so meaningful.

Respite care gives families essential time to rest and recharge, knowing their loved one is being cared for with warmth and professionalism.

Patient transport, provided by dedicated volunteer drivers, ensures people can reach vital hospital appointments without the stress of travelling alone, and patients are welcome to have someone accompany them for added comfort and reassurance.

Holistic and Complementary Therapies such as massage, aromatherapy, and relaxation techniques.

Family support offers compassionate guidance, listening, and specialist pre- and post-bereavement care for adults, children, and young people. Dementia Nurse providing advice and support to families.

Together, these services provide compassionate care that offers reassurance when it's needed most. The staff and volunteers of the Tynedale Hospice at Home fully deserve to be our Local Heroes of the month. Thank you very much for this amazing service you offer us.

See Page 31 if you can help with some volunteer driving.



Unit K3, Hadrian Enterprise Park, Haltwhistle, Northumberland, NE49 0EX

## POSTMA ELECTRICAL LIMITED

Domestic & Commercial Electrical Contractors & Engineers

TEL: 01434 320226

Email: [info.office.postma@gmail.com](mailto:info.office.postma@gmail.com)

Web: [www.postmaelectrical.co.uk](http://www.postmaelectrical.co.uk)



### Security Division

Security Lights

Intruder Alarm Installation

Servicing & Testing

Fire Alarm Installation, Servicing & Testing

CCTV Installation & Maintenance

Secure Door Entry Systems & Intercom



### Electrical Division

House Re-wires

Extra Sockets & Lights

Cooker Installations

Immersion Heaters

Shower Installations

Domestic Heating System Wiring

Periodic Testing & Inspection (EICR)

Landlord Certificates (EICR)

Emergency Lighting Installation

Emergency Lighting Servicing

Fault Finding & Diagnosis

LED Flood Lighting

PAT (Portable Appliance Testing)

Electric Vehicle Charger Installation



## *We're your local PET SHOP!*

Stockists of a wide range of feeds and accessories for dogs, cats, birds, small animals, fish, horses etc

***Competitive prices and free local delivery service!***

Give us a call before you shop online - we can get most brands and we may well be able to save you some money!



Poltross Enterprises, Unit 8b, West End Ind Estate,  
Haltwhistle. NE49 9HA. Tel 01434 321111  
Open Mon, Tues, Thurs 10 - 5 and Sat 10 - 1

# Holy Cross, Haltwhistle

Our Easter Day service was a wonderful occasion with the Bishop of Berwick. There were a lot of entries for the Easter Bonnet competition and several good Pace Eggs and our entrants made a cheerful sight standing together. One bright spark suggested that the bishop's own entry was very good LOL.

Members of our Social Committee and Craft and Chat group teamed up with others to do a wonderful afternoon tea in aid of Haltwhistle's Christmas lights during the week after Easter, raising nearly £1600 for the town.

Coming up this month is our dramatic presentation of the complete gospel of Mark, live! on Saturday 16th May at 7pm. This is a moving presentation, admission is free, and there will be light refreshments half way through.



# St Cuthberts, Greenhead

Our schools are very important to us and we are very fortunate to have ours. Steve, our vicar, goes in several times a term into each of them - this picture at Greenhead. Trying to explain the Easter events to Primary school age children is not always easy, and they can have such interesting questions. Of course the disciples didn't understand what God was doing at first but Jesus helps us both to understand the heart of it, and also to live with the uncertainty of what we do not know. May our wonderful God bless and guide our children and those who teach them!



# All Hallows, Henshaw

During the week before Easter we had some services in the evenings at each church. We are so used to seeing the windows that we hardly look at them when we come into church, but seeing them lit up at night I noticed them in a way I haven't done for a long time. I was struck by the richness of colour seeing them lit up by the glow of the light within. The centre pane in the East window has a representation of the famous picture by Holman Hunt of Jesus, The light of the World. That this is the centre piece speaks of the centrality of the call of Jesus on our lives, and that inviting him into our lives is key to walking with God.

The two windows either side of that are St Hilda and Ruth, the colours of their robes looking so good in the light at night. St Hilda was of the royal household of Deira and became Abbess of Whitby and was well known as a wise and godly woman whose advice was appreciated by political leaders of her day. The staff she carries along with the model of a church building indicate something about who she is.

Ruth carries a sheaf of wheat or barley, and if you read her story - it is very short, four chapters in the bible - you will see quickly why she carries that. It is a sign of her humility, her hard work, and faithfulness to her mother in law. With no food banks to fall back on, the kindness of a more distant relative along with Ruth's faithfulness became essential for family survival.

Come and have a look when we are having services, or when open for Chat and Chill on Monday mornings, or our Film nights.



*From the Registers:*

Funeral – Percy Murray Coats, Graham Ridley

*In this resurrection month we give thanks for birth and new birth into eternal life within the love of God who gives us life. Thanks be to God.*



# the gospel of **MARK**

a dramatic presentation of the complete gospel – live!

**devised and performed by Rev'd Ian Birkinshaw  
with original music by Rev'd Peter Birkinshaw**

**A traveller arrives to tell the story of a preacher and miracle-worker  
whose dynamic presence touches the lives of all who meet him...  
with the most astonishing twist-in-the-tale the world has ever known!**

There is joy, comedy and sadness  
as Mark's fast-moving narrative brings the characters to life.  
The drama is underscored throughout by live music.

In the second act we begin the journey to Jerusalem and the Cross,  
with an open invitation to share bread and wine  
before the startling discovery of the empty tomb.

*I never describe anything as awesome  
but tonight I saw two men give a  
properly awesome performance of  
The Gospel of Mark. It was incredibly  
captivating.*

*Compelling! Stunning!  
Mesmerising! Phenomenal!*

*So many insights into the  
life and teaching of Christ.*

*You touched my heart.*

*It took me right to the heart of the  
story as if I was there alongside Jesus.*

*I thought I knew the Gospel of Mark  
but what you brought us was like  
fresh rain.*

*You had the hairs standing up on the  
back of my neck, and several times  
I was close to tears.*

*Profoundly moving.  
We were on Holy Ground.*

[gospelofmarklive.wordpress.com](http://gospelofmarklive.wordpress.com)

**Saturday 16<sup>th</sup> May at 7pm**

Holy Cross Church, Haltwhistle

# View From The Vicarage

Canon Steve Wright

Do you suffer from anxiety that a stranger may be hiding in your room? You're not alone. The disciples more than once in those post resurrection days found that Jesus had somehow bypassed locked doors to be standing in their midst. Sometimes today God makes his presence felt in a very real way but more often people realise after the event that God was with them somehow as they look back and think about what happened. Pray to God and ask for his peace. Then come and give thanks with all his people together and find a way to tell of his goodness.

## CHURCH SERVICES

### Church of England

First Sunday of May - 10am Group service, All Hallow's Henshaw.

Other Sundays of May -

- 9.30am Holy Cross, Haltwhistle
- 11am St. Cuthbert's, Greenhead
- 11am All Hallows' Henshaw (except 10th May in Beltingham)

Thursdays 10am - a quiet meditative service - Holy Cross, Haltwhistle

### Roman Catholic Services

9.30am on Thursdays at St. Wilfrid's Church Haltwhistle

### Methodist Services

10.30am on Sundays at Haltwhistle Methodist Church

## CONTACTS

### Church of England

Revd Canon Steve Wright  
Holy Cross Church, Haltwhistle NE49 0AB  
01434 320215  
<https://parishesbythewall.org.uk/>

### Methodist

Revd Marie Beard  
Haltwhistle Methodist Church, Westgate, Haltwhistle  
01434 632210  
[www.tynedalemethcircuit.org/churches/haltwhistle.html](http://www.tynedalemethcircuit.org/churches/haltwhistle.html)

### Roman Catholic

Father Jeffrey Dodds  
St. Wilfred's Catholic Church, Westgate, Haltwhistle  
01434 603119  
<https://www.stmaryshexham.org.uk/st-wilfrids-haltwhistle/>

# Methodist Church & Churches Together

## Frugal Lunches

On behalf of Churches Together in Haltwhistle I send a big THANK YOU to all who attended the Frugal Lunches during Lent in support of Christian Aid. We have done this for more than 20 years and the £954.50 raised is the most we have forwarded to Christian Aid since 2013. Many thanks are also due to the (mostly) ladies from our churches who provided some excellent soups and gave great service to us all.

## Procession of Witness

On Good Friday about 35 of us braved the heavy rain as we processed from the War Memorial to the Market Place. This is our humble reflection of the journey of Jesus to his crucifixion on the hill of Calvary. Many of us were struggling to turn the sodden pages of the order of service by the time we reached our destination: nevertheless, the readings were read and the hymns sung despite the squall. We were very thankful for the hot cross buns and hot drinks served in Holy Cross and much appreciated coming indoors. Particular thanks to Stephen Palmer and Pat Dawber for their help in preparation of the cross, its decoration on Easter Day and dismantling. John Clark



Haltwhistle **Methodist** Church 

**May 2026**

**Services**

Sunday 3rd

10.30am Rev Marie Beard  
(Holy Communion)

Sunday 10th

10.30am Sheila Holland

Sunday 17th

10.30am Worship Leaders

Sunday 24th

10.30am Rev Marie Beard

Sunday 31st

10.30am Circuit Service  
at Bellingham

**ALL WELCOME**

# Out & About

## Silver Friends Shopping Trip (for people over 50 years of age)

Silver Friends are working with Adapt Transport and running a monthly Shopping Club. The route is Haltwhistle - Hexham - Haltwhistle. The minibus collects you from your home, drops you in Hexham for 2 hours and then returns you home again.. The monthly trips run on the 3<sup>rd</sup> Monday of every month. Pick up is from 10:15 am and the cost is £10.00

If anyone would like to book please get in touch with Elizabeth on tel 07761 207 355 or 0191 223 8662 or email

[silver.friends@karbonhomes.co.uk](mailto:silver.friends@karbonhomes.co.uk)

Upcoming dates are Monday 18<sup>th</sup> May, Monday 15<sup>th</sup> June, Monday 20<sup>th</sup> July.

## Men's Brunch

Every third Friday of the month we host a Men's Brunch - a time for male companionship, some chat, a bacon buttie and a cuppa. We are meeting at Hillside and our numbers are growing. See below for further details.

silver friends



### Monthly Shopping Club for people aged 50+

Haltwhistle to Hexham Return  
2 hours of shopping in Hexham

Monday 18th May

Pick up at 10:15 am  
from  
Tynedale Grange

Drop off approx 1:45 pm  
at Tynedale Grange



To book a place contact Elizabeth on

📞 07761 207 355

📞 0191 223 8662

✉️ [silver.friends@karbonhomes.co.uk](mailto:silver.friends@karbonhomes.co.uk)

Funded by  
**karbon**  
homes



silver friends



### Men's Brunch

Chat with other men aged 50+  
Enjoy a bacon buttie & a hot drink.  
All Free.

Date: Friday 15<sup>th</sup> May

Time: 10:15 - 12:00 pm

Venue: Hillside  
Bottom of School Bank  
33 Park Avenue  
Haltwhistle  
NE499AU



For more information contact Elizabeth on

📞 07761 207 355

📞 0191 223 8662

✉️ [silver.friends@karbonhomes.co.uk](mailto:silver.friends@karbonhomes.co.uk)

Funded by

**karbon**  
homes



# Out & About

## Historic Homes Exhibition at Walltown Country Park

Saturday May 23<sup>rd</sup> to Sunday May 31<sup>st</sup>, 10am – 3.30pm every day.

Free entry and a second chance to see Zigzag's models of ten historic homes and an opportunity to meet the model makers.

Also a short film 'The Making of Poltross Burn Milecastle 48' and four films using local English Heritage sites as inspiration: Pike Hill Signal Tower, Leahill Turret, Hare Hill - Wall remains, Banks East Turret. These films were made by FilmAble, a company within Haltwhistle Film Project, run by and for people with learning disabilities.

Zigzag's Historic Homes project was funded by Haltwhistle's Community Shops fund. Zigzag's Milecastle 48 model and film and the FilmAble films were part of English Heritage's Community Connections Project.

## Hearing Aid Clinic update

Apologies this will not start for a couple on months as volunteer recruitment and training continues. If interested in volunteering contact Helen on 07703150443, some computer literacy required.

## Treasure Hunting for a Cause in Haltwhistle

A charming mix of curiosities, collectibles, and hidden gems is set to arrive in Haltwhistle this spring, as the community comes together for a special Antiques Fair in support of a meaningful local cause.

Where? Haltwhistle Hospital Community Room

When? Monday May 18th 2026

What Time? 10.30 to 3.30

What's it in aid of? The Memory Cafe (Dementia Support at Haltwhistle)

What's on Sale? Antiques, Car Boot Items, Might Come Handies, PLUS Raffles in aid of Haltwhistle Hospital

Where can I get further details? 0748 475 7022





# RITEMIX Ltd.



**SUPPLIERS OF  
READY MIX CONCRETE, CONCRETE LEGO BLOCKS,  
READY MIX MORTAR & ALL TYPES OF AGGREGATES  
GRABS, TIPPERS & PLANT HIRE**

**Inquiries:** For more information on the different types of concrete, or any of the other services we provide call us on **01434 321458** or email us at **info@wannopltd.co.uk**

**Head Office:** Ritemix Ltd, Lyntleydale, Townfoot, Haltwhistle, Northumberland, NE49 0ND



## Special Camping And Glamping In The Heart Of Northumberland And Hadrian's Wall

This is a special campsite less than a mile from Hadrian's wall. Perfect for great walking, stargazing and family time. We are dog friendly too. You will get the warmest of welcomes here at Hadrian's Wall Camping and Caravan Site

We have the most precious thing here, being surrounded by views and nature that make us smile every day. All we want is for you to experience it also and we know you'll love it as much as we do. Here you can totally connect with nature, relax and recharge.

This is the perfect place for your Northumberland camping getaway whether in your campervan, motorhome, caravan, tent or in one of our luxury glamping units



HADRIAN'S WALL  
CAMPSITE

[www.hadrianswallcampsite.co.uk](http://www.hadrianswallcampsite.co.uk) +44 1434 320 495 [info@hadrianswallcampsite.co.uk](mailto:info@hadrianswallcampsite.co.uk)



A Family ran cafe with 30 years of experience.  
We cater to Allergies and intolerances and try to be as flexible as possible to suit everyones needs.

We source everything as locally as possible.

We bake all of our cakes and bakes in house and offer catering and celebration bakes.

Opening hours -  
Tuesday 10 - 4  
Wednesday 10 - 2  
Thursday 10 - 4  
Friday 10 - 4  
Saturday 10 - 4  
Sunday 10 - 2

Tel: 07841871404  
Email: [bonnieboobakes@gmail.com](mailto:bonnieboobakes@gmail.com)  
Find us on Facebook and Instagram



New term starting the beginning of September!

Space in all classes, for both adults and children, simply get in touch to book your space

Contact Hannah on  
07983 470534  
[info@hannahlucystageschool.co.uk](mailto:info@hannahlucystageschool.co.uk)

Wed – cheerleading 4-4:50  
Acro 5-5:50  
Adult ballet/Modern 6-6:45  
Adult tap 6:45-7:30  
Clubbercise 7:45 – 8:30

Thurs – Teeny boppers 4-4:30  
Mini ballet/tap/mod 4:30-5:20  
Junior ballet/tap/mod 5:30-6:20  
Street 6:30-7:30  
Senior ballet/tap/mod 7:30-8:30

Fri – Junior ballet/tap/mod 5-5:50  
Street 6-6:50



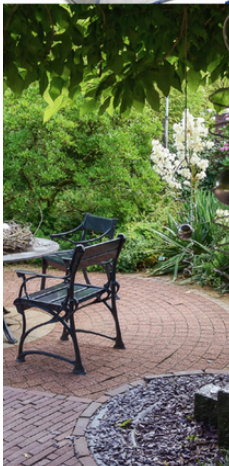
# PPH

## HIRE AND SUPPLIES

Townfoot Yard, Avenue St Meen,  
Haltwhistle  
Northumberland NE49 0ND  
Call 01434 322222

[www.planthirenorthumberland.co.uk](http://www.planthirenorthumberland.co.uk)

Your one stop  
DIY shop



# Culture & Arts

## Andrew Cadie at The Threshing Barn

On Friday 10th April, The Threshing Barn welcomed multi-instrumentalist, Andrew Cadie for an intimate evening of music that felt both deeply rooted and refreshingly expansive.

Now based in Germany, Andrew returned to his Northumbrian/North East heritage with a set that wove together traditional work songs, soulful originals, fiddle and pipe tunes, and moments of unexpected big choruses. His ease across instruments and styles created a rich, layered sound that filled the barn while still holding a sense of closeness and connection with the audience.

The acoustics of the barn seemed to suit the music perfectly, allowing the subtleties of the fiddle and pipes to resonate, while the more rhythmic and driving pieces lifted the energy in the room.

Tracks from his recent album *Flooding The Ocean*—recently nominated for the German Record Critics' Prize—sat comfortably alongside older material, showcasing both his musicianship and his ability to reinterpret tradition in a contemporary voice.



It was a special evening: rooted in the landscape, rich in musicality, and shared with a warmly appreciative audience. We are excited for what's coming up. In June Johnny Campbell and Sue Reed present an evening of creative writing and song in July we welcome a fairly new duo Jon Doran (2019 finalist on BBC Radio 2's Young Folk Awards) & Dave Gray (Kaite Doherty & The Navigators). Tickets from [www.greencroftonthewall.com](http://www.greencroftonthewall.com)

## THE THRESHING BARN



What's On May 2026



### BELTANE GATHERING

Friday 1<sup>st</sup> May 19:00 - 20:30

Sound bath, fire ceremony and intention setting

### DAY RETREAT

Saturday 16<sup>th</sup> May 10:00 - 16:00

Yoga, Sound Healing and Somatic Coaching



### AN EVENING OF CARE

Friday 30<sup>th</sup> May 19:00 - 20:30

Tropic Facial Massage & Sound Bath



### FREE FAMILY ACTIVITIES

Wed 27<sup>th</sup> - Sun 31<sup>st</sup> May 2026

Half term music and story making activities



Regular Weekly Classes For All Levels  
Chair Yoga, Hatha Yoga and Adult Ballet



# Culture & Arts

## Poetry Drop-in

Wednesday 6th May, Greenhead Village hall 1.30 to 3.pm

We will be 'reading round' the long but delicious poem by Robert Browning about the ancient German legend of the Pied Piper - you may remember it from childhood, but it's full of things for all ages to enjoy - sparkling language, outrageous rhymes and a moral lesson, too! And bring a favourite poem of your own as well to share!

## The New Hadrian Singers

We are looking forward to performing some of our latest repertoire during the May Day festivities in Haltwhistle - meet you there! Otherwise we meet every Friday in the Community room at the Hospital at 7pm (earlier if our leader, Lindsay has a gig in a distant city) and have a lot of fun! All ages welcome - you just need to enjoy singing.

## Haltwhistle History Group

We will be welcoming Sophie Westlake from The Roman Army Museum to the meeting on Wednesday, 13th May at 10.30 in the Community Room at Haltwhistle Hospital to bring us all up to date on the exciting finds and alarming research happening at the dig at Magna fort - clearly visible on the horizon from the Military Road approaching Greenhead! As always, the talk is free though the Group welcomes donations.



At the **Roman Army Museum** from Sunday 24<sup>th</sup> to Wednesday 27<sup>th</sup> May there is the Great Pottery Throwdown! You can have a go at being a pottery illustrator and get hands on with the pottery collection as you learn to draw accurately like an archeologist. This event is included with your standard admission and is suitable for all ages.

## The Over The Wall Players

present

### An evening of light entertainment including the comedy play "Rambles on Radio" (by Robert Scott)

The evening will open with comedy sketches and songs. After a break for a light supper join our 'professional actors' as they rehearse, and then broadcast live, their radio play — the sinister tale of Bellister Hall. Frictions emerge as the cast rehearse this spooky play but surely such professionals would not allow their emotions to affect their live broadcast .... or would they?



Bardon Mill Village Hall on Friday 8 May  
Greenhead Village Hall on Saturday 9 May  
Doors open at 6:45pm for a 7:15 pm start.  
Ticket price £10 to include a light supper.

There will be a cash bar for beer, wine and soft drinks at Bardon Mill. For Greenhead bring your own drinks, although tea and coffee and some soft drinks will be available.

Tickets available (cash only), from Bardon Mill Village Shop and Haltwhistle Community Bookshop or by telephoning Diane on 07878 697751 or for Greenhead, Elsie on 07796 103000

## Volunteer drivers needed!

For people receiving treatment for a life limiting illness, getting to medical appointments should be the least of their worries.

Yet for many families in our area, the distance to GPs, hospitals, and health centres can create stress and anxiety, especially for those living in more remote areas.

Our Patient Transport Service provides free private car travel to help patients attend medical appointments associated with their treatment safely, comfortably and stress free. They are welcome to bring a friend to support them.

Our volunteers choose to give their time for a variety of reasons. You can volunteer as much or as little as you like, and all petrol costs associated with the drive are covered by the Hospice. Every journey made has a real impact on local families, giving peace of mind to patients and their families during life's most challenging times.

If you have spare time and want to make a difference in your community, consider joining our Patient Transport Service.

Your support can help ensure that no one misses the treatment they need due to transport barriers.



For more information, visit [tynedalehospice.com](http://tynedalehospice.com)  
or email [volunteering@tynedalehospice.com](mailto:volunteering@tynedalehospice.com).

**tynedalehospice.com**  
**01434 600388**

Charity No. 1034170



## Hands-on Therapy for joints, muscles and mobility issues

With over 20 years experience  
I can help resolve your  
problem quickly

"Brilliant  
treatments that  
give results."

"Knowledgeable,  
professional, highly  
recommended."

Call Maureen on  
**07981 101651**

**muscleMatters**

[www.muscleMatters.co.uk](http://www.muscleMatters.co.uk)



*Keeping you moving*

## Armstrong Fashion & Bridal

*"The Personal Touch"*

Stockists of  
Lily & Me  
Pomodoro London  
Barbara Lebek  
Saloos  
Marble

New Stockist for Gardeur Trousers  
New Sunday Knitwear & Casuals  
New for 2026 - Bianca

Tigi shop - plus Viz-a-Viz and Penny  
Plain Size 8-24

Jewellery, Bags, Gloves & Scarves

We are here on your doorstep,  
with a personal service.

Three Day Approval Service -  
Try at Home

Catherine  
Main Street, Haltwhistle  
01434 322223  
armstrongfab@hotmail.co.uk



## T.C Tree Services

Contact us for a free quote today  
07815613444  
01434 673918  
tctreeservices1@gmail.com

Your local Tyne Valley Tree Surgeon

Fully Qualified & Fully  
Insured Expert team

### OUR SERVICES

- Tree Removals
- Pruning
- Tree Inspections
- Stump Grinding
- Hedge Cutting
- Tree Surgery
- TPO & Conservation Area  
Advice & Applications

[www.tctreeservices.co.uk](http://www.tctreeservices.co.uk)

Follow Us



# Haltwhistle Horticulture

By the end of April we should all have seen some sunshine and signs of growth in gardens and allotments. Spring flowers are attracting emerging bees and insects and early sowings of hardy salad crops should be well on their way if you have been organised enough.



I used to get carried away and sow or plant everything I was told to in spring by television gardeners, then wondered why nothing grew? I soon learned that in our area you need to add at least a couple of weeks on seed packets which often say "plant or sow in the early spring." Not much will germinate outdoors before mid April here in the North of England.

There are two things necessary for germination and growth for most plants. First is daylight. Most plants need 10 to 12 hours minimum to grow. The second is ground temperature. Even "cool season" crops such as cabbage, kale, onion, and peas need soil temperatures of 32 to 40 degrees to germinate. This is why we start off so many seeds in poly-tunnels or greenhouses. Just remember to acclimatise plants to outdoors using a cold frame or covering with fleece for a few days before planting out in beds or pots.

There is not space in this column to go into more detail but if anyone is interested to find out more come along to Haltwhistle Growing Together at Hillside Youth and Community Centre on a Thursday between 10 am and 12 noon. You will get lots of advice (and a cup of tea).

This is an excellent guide on the RHS website.

<https://www.rhs.org.uk/vegetables/potatoes/grow-your-own> that gives you actual air and soil temperatures for the stocksfield area.

Pick up some hints and tips and see what we are growing on Thursday mornings 10 am til 12 noon at Hillside Youth and Community Space.





# Curlew Accounting

**"Accountancy with a personal approach"**

**Based in Hexham, but providing services throughout the North East & Cumbria**

**[www.curlewaccounting.com](http://www.curlewaccounting.com)**

**Email: [paul@curlewaccounting.com](mailto:paul@curlewaccounting.com)**

**Tel: 07950 972152**



## Need **help** on a **legal matter?**

Get in touch with your local team of friendly legal experts.

From buying or selling your home, making a Will, employment and family issues to helping you with your business we are...

*Always at your side*

📍 Main Street, Haltwhistle, Northumberland, NE49 9AB

✉ [haltwhistle@cartmells.co.uk](mailto:haltwhistle@cartmells.co.uk) 🌐 [www.cartmells.co.uk](http://www.cartmells.co.uk)

☎ 01434 320362 Find us on... [f](#) [in](#) [x](#) [@](#)

We are authorised and regulated by the Solicitors Regulation Authority (618960)



Kindly sponsored by the Roman Army Museum



# Hidden History

## Armstrong's of Haltwhistle - a short history and celebration of 100 years

On May 1st, 1926 two days before the National General Strike, two Armstrong sisters opened their first shop in Haltwhistle, selling ladies clothing and draperies.

Rebecca May (Beccy) and Catherine (Kitty) were joined in the early 1930s by their brother William (Willie). This led to a move from Westgate to larger premises on Main Street. Willie increased the business by building up a large travelling connection, calling on farms throughout Northumberland and North Cumbria.

In 1938 William married Dorethy and their four children Helen, Catherine, Billy and David all joined the firm on leaving school.

In 1944 the firm became a limited company and as the business grew adjoining properties on Main Street were acquired. To complete the picture in Haltwhistle the large property of Westbourne House was purchased in 1947, to expand the ladies fashion trade.

By the early 1950s Beccy had left the firm, and when Willie died unexpectedly in 1960 his children took over with Kitty's guidance. Billy took over his father's travelling rounds and Helen managed their newly acquired shop in Brampton. Kitty died in 1975, just one year before our 50th anniversary.

Through the 1970s and 1980s the business continued to expand, twice winning the national window display competition for Ladybird Children's Clothes. The prize of £1,000 each time was a substantial amount in those days. The prize money was spent taking the entire staff on several outings.



Kindly sponsored by the Roman Army Museum



# Hidden History

Over the years the firm has been active in its support of the local Chamber of Trade, the Carnival and many community events.

In the early 1980s Catherine's two children joined the firm, with Anthony concentrating on carpets and Eleanor, the bridal wear. By this time the firm employed 26 staff and 6 family members but times were changing fast. New out of town shopping centres like the Metro and the Lanes at Carlisle and increasing internet shopping saw a rapid decrease in local business.

In 1994 the whole business was restructured. The Brampton store and Westbourne House were sold and all staff were paid their full redundancy. Helen retired, Anthony left to start his own carpet business, Catherine and Eleanor kept their bridal and fashion business and Billy and David kept their carpet business. From 1994, the two separate businesses flourished and were just emerging from the Covid pandemic when tragically Eleanor died at the age of only 50. Billy and David decided to retire in 2022 but Catherine continues to serve her loyal customers with ladies fashion to this day. An inspiring story of dedication to providing a much loved service to Haltwhistle,

Make a note in your diary -  
Friday May 1st, 2026 do join us at Armstrong's Fashion and help us celebrate.





Tel 07904 412378 email [info@amblecoaches.co.uk](mailto:info@amblecoaches.co.uk) [www.amblecoaches.co.uk](http://www.amblecoaches.co.uk)

## 2026 Brochure out soon, but still availability on some of our 2025 tours.



We have coaches from 16 to 80 seats available to hire for your day trip, club outing, group holiday etc - give us a call for a no obligation quote. We operate a wide range of day trips, short breaks and coach holidays throughout the year, keep an eye on our website or facebook page as they are kept fully up to date with all our latest news.

Picking up at Corbridge, Hexham, Haydon Bridge, Bardon Mill, Haltwhistle, Greenhead, & Brampton.



Tel 07904412378 or email  
[info@amblecoaches.co.uk](mailto:info@amblecoaches.co.uk)

## Haltwhistle Little Star

Childrens Day Nursery  
Growing and learning together

Open Monday to Friday 8am-5.30pm  
Telephone 01434 322233

[www.haltwhistlelittlestar.co.uk](http://www.haltwhistlelittlestar.co.uk)

Established 2004 - Registered Charity No 1100529

*We can help*

Back Pain  
Neck Pain  
Shoulder Pain  
Sciatica  
Headaches  
Migraines

HEXHAM  
*Family*  
CHIROPRACTIC

*Call*

01434 602666

[www.hexhamchiropractic.co.uk](http://www.hexhamchiropractic.co.uk)

[info@hexhamchiropractic.co.uk](mailto:info@hexhamchiropractic.co.uk)

*Mention this  
advert for  
discount*

# Health Matters

## STAY WELL - BE HAPPY with Haltwhistle Growing Together

Being a Mum can be very isolating at times. You may be missing work or social contact? Or just needing some time to yourself, to relax? Would you appreciate an opportunity to share some time together with other Mums.

If so, come and join our six week programme created especially for Mums living in the Haltwhistle Area.

Starting on 4th June, these Thursday afternoon sessions will be from 1pm until 3pm. You will explore how nature, exercise, being outdoors, having fun, crafting and even chocolate can help you feel better about yourself and help boost your mental and physical health.

The programme includes, yoga, creating a cyanotype portrait, forest bathing, good mood food, making herb bags and Qi gong.

During each themed session you will have the chance to pause and relax over a cuppa and cake, make new friends or catch with old ones.

All sessions will be based at Hillside Youth and Community Centre apart from one which will be elsewhere in Haltwhistle.

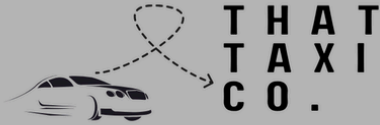


There will be some gentle exercise and movement involved in some of the sessions. Please enquire if you have any concerns as to your ability to take part.

This six week "Stay Well, Be Happy" programme is available for just £35 (thanks to funding support from Haltwhistle Partnership). Please contact us to discuss concessions. Sorry no childcare available.

To book places and find out more you can email [haltwhistlegt@gmail.com](mailto:haltwhistlegt@gmail.com) or phone 07934 703546 or checkout "Haltwhistle Growing Together" on Facebook.





HERE TO GET YOU THERE  
IN HEXHAM & HALTWHISTLE

Safe  
Reliable  
Booking confirmation  
Text updates  
Tracking  
Cash & card  
Pre-payment

- Airport transfers 24 hour (pre-booked)
- Account facility (minimum spend)
- Pets welcome
- Up to 20 passengers (multiple vehicles)
- Long distance
- Day hire

About Us & contact @  
Email - [thattaxico@gmail.com](mailto:thattaxico@gmail.com)

 [www.thattaxicohexham.com](http://www.thattaxicohexham.com)

**CALL NOW: 01434 303 123**



FACEBOOK



WEBSITE



GOOGLE

**Colophon**  
Print & Design

get your business noticed



ALL YOUR PRINT  
SOLUTIONS IN ONE PLACE  
**FOLDERS**  
**NEWSLETTERS & BOOKLETS**  
**NCR DUPLICATE FORMS**  
**BUSINESS STATIONERY**  
**STICKERS & LABELS**  
**LEAFLETS/FLYERS**

SERVING CUMBRIA & SOUTH WEST SCOTLAND FOR OVER 35 YEARS  
**CONTACT US TODAY**

[www.colophonpress.com](http://www.colophonpress.com)  
[sales@colophonpress.com](mailto:sales@colophonpress.com)  
01228 524444

Follow us



**COLLINGWOOD**  
**EAR CARE**  
MOBILE EAR WAX REMOVAL

Covering a 15 mile radius of Hexham

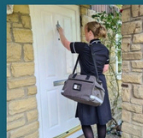
[collingwoodearcare.co.uk](http://collingwoodearcare.co.uk)  
email

[collingwoodearcare@outlook.com](mailto:collingwoodearcare@outlook.com)

**07716451597**

Home visits  
7 days per week

Qualified nurse  
CQC registered



Assessment £15  
1 ear irrigation £45  
2 ear irrigation £60  
Irrigation price  
includes assessment



# Next Generation

## Young & Sweet

Our members have been enjoying the lighter nights with lots of outdoor play. We try to use our wonderful gardens as much as we can between Spring and Autumn. Regular sessions have included celebrating International Women's Day, learning to use SMART goals and having thoughtful conversations about healthy relationships. We had great fun in the Easter holidays where our members took part in Easter Activities including making Easter bonnets, chocolate nests, pace eggs and competing in egg jarping.

We also had a great day visiting Adventure Valley using outdoor climbing frames, trampolines and visiting farm animals.



We have eight members working towards completing their Northumberland challenge which consists of six missions including volunteering, cooking a three-course meal, fundraising, taking part in a new outdoor sport, visiting a place of culture and staying away from home. The young people have made a good start with cooking and organising small fundraising events such as a beetle drive to be held at youth club in the summer which will be run by Anya and George.

This term we plan to go around the world! We will learn about different cultures, taste new foods and take part in activities which encourage young people to be open minded and respectful of things that are new/different from what they are normally used to.



# Sports

## Tynedale RFC

Tynedale RFC have enjoyed an impressive 2025/26 season so far, establishing themselves as one of the leading sides in National League 2 North. Currently sitting second in the table with two games to go, putting them in playoff contention.

A strong run of results has underpinned their campaign, with notable victories including dominant wins over Darlington Mowden Park (39-0) and Billingham (41-0), as well as an emphatic 47-5 away performance at Scunthorpe. These performances highlight both their defensive resilience and their ability to score freely. Which shows in the league table with Tynedale winning 19 of their 24 games so far.

Leadership has played a key role this season, with co-captains Will Miller and Oscar Caudle guiding the squad and leading by example. Meanwhile, individual contributions from both flyhalves with impressive points tally have helped maintain momentum in a highly competitive league. Although it has not been all plain sailing with the Flying Will Roberts (Winger) being a huge miss from the team at the start of the season due to injury.

However, he made a terrific comeback in the new year, scoring an abundance of tries since returning. Also not to be overlooked from this season is the incredible achievement of Graeme Dunn, who got his 350th Cap for Tynedale earlier this year, a true clubman.



Overall, Tynedale's season to date reflects a well-balanced side, which has put in consistent performance each week, giving them the opportunity to get back into National League One, a league they have been trying to get back into since 2015.

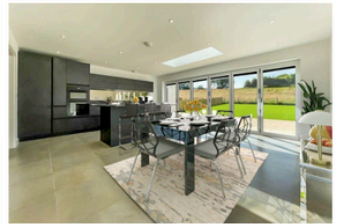


# CLINIC BASED PHYSIO

We offer multiple services in our Hexham based clinic. Our therapists are all CSP, HCPC registered and DBS checked.

- ✓ Physiotherapy
- ✓ Pre and Post op Rehabilitation
- ✓ Access to Private MRI
- ✓ Access to Private Consultants
- ✓ Acupuncture
- ✓ Shockwave Therapy

📞 07833494268    🌐 [www.insynctherapy.co.uk](http://www.insynctherapy.co.uk)



# wannop

DEVELOPMENTS & BUILDERS

Give us a call today to see how we can help! For all enquiries, quotations or information contact us on:

T: 01228 670311    M: 07747 897166    E: [info@wannopltd.co.uk](mailto:info@wannopltd.co.uk)

Address: Esk Quarry, Sandpit Number 2, Faugh, Carlisle, England, CA8 9EG

# Directory

## HEALTH

Hexham General Hospital	01434 606161
War Memorial Hospital	01434 362200
Haltwhistle Health Centre	01434 320077
Cumbria Infirmary	01228 523444
Haltwhistle Dental Health	01434 322300
Geoff Steven and Sons Opticians	01434 322217
Anne Watson Podiatrist	01434 322723

## SERVICES

Police	0345 6043043
Library & Tourist Information	01434 321863
Capontree Veterinary Centre	01434 320705
Co-op Funeral Director	01434 321755
Ian Blair Funeral Director	01434 322400
Northumberland Communities Together	01670 620015
Haltwhistle Family Hub	01434 321761
Cartmell Shepherd Solicitors	01434 320362

## SCHOOLS

Haltwhistle Academy	01434 320467
Haydon Bridge High School	01434 684422
Henshaw C of E Primary	01434 344324
Greenhead C of E Primary	01697 747347
Gilsland C of E Primary	01697 747302

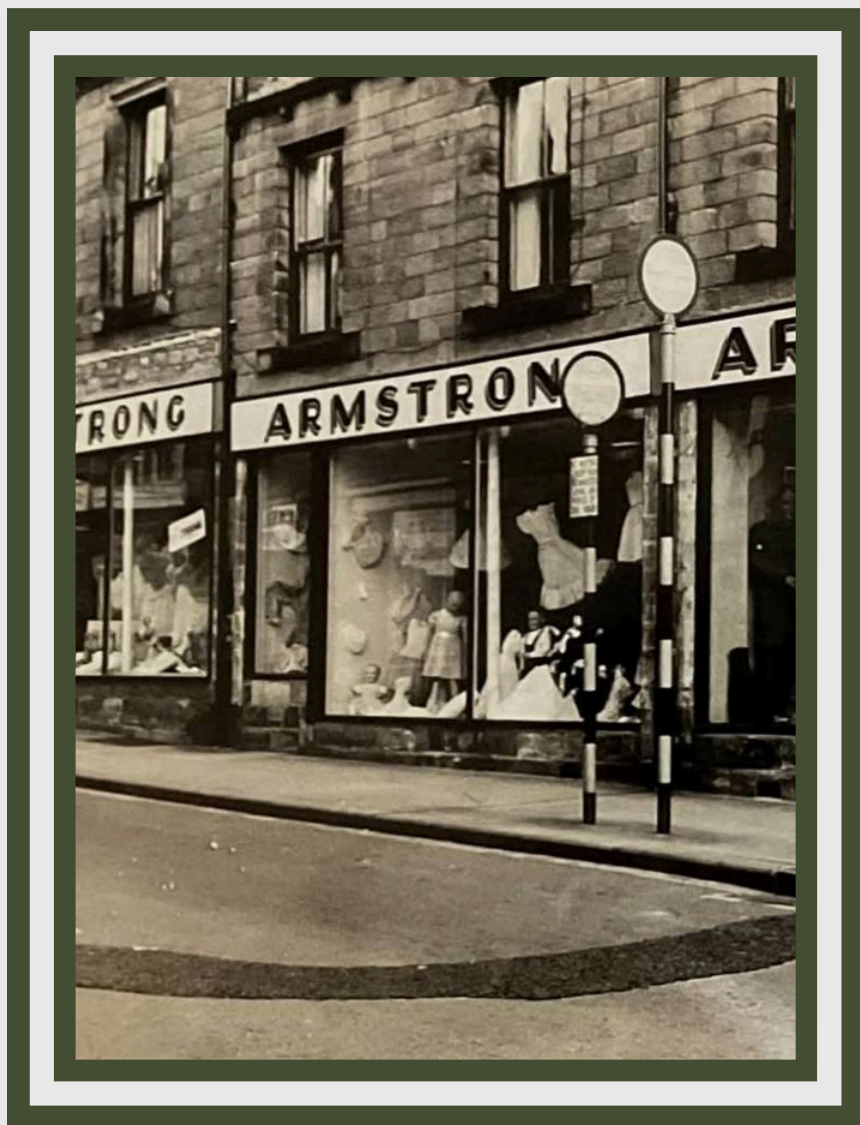
## LEISURE

Haltwhistle Golf Club	01697 747367
Haltwhistle Leisure Club	01434 320727

## HELP LINES

Victim Support	0300 3033 797
Childline Counselling	0800 11 11
Samaritan's Freephone	116 123
Farm Community Network	07002 32632
OneCall	01670 536400

# PICTURE OF THE MONTH



***Memories of Haltwhistle and the local area -  
celebrating 100 years of Armstrong's***

Share your old pictures and photos of life in or around Haltwhistle pre 1980 to [haltwhistleherald@gmail.com](mailto:haltwhistleherald@gmail.com), or drop them off in an envelope addressed to the Herald at the library - don't forget to include your name, and address if you would like them returned.