



ELEVEN SAYS

APRIL /
MAY 2026

ISSUE 318

THE NEWSPAPER OF THE BRAMERTON GROUP OF CHURCHES COVERING 11 PARISHES

Convoy4Ukraine . . .

Some of you may recall from a previous 11 Says, that Nigel and I were asked if we could be part of Convoy4Ukraine in February. Drivers and co-drivers are asked to raise £9,000 each to buy the trucks, which are then left in Ukraine for the soldiers and civilians. Each truck is filled with £9,000 of quality medical aid and humanitarian supplies specifically requested by the Charity's contacts in Ukraine. These are items such as electric wheelchairs and winches, generators, tourniquets, diesel heaters and adapters, celox gauze and burn gels. Each volunteer pays about £1,000 to cover the costs of overnight stays, food, train and flights home meaning all donations go direct to the charity.



Convoy. Paul and Ant in the lead!



At the border

We left from Towcester at 6 am on 13th February in a convoy of 22 trucks. From there, we spent the first night in Dortmund, followed by Gliwice, Poland, and then to Lviv for two nights. We were driving, with stops, on average for nine hours a day.

Lviv was an enormous mixture of emotions. We felt joy at the profound gratitude of the soldiers and civilians we met, along with deep distress at visiting the military rehabilitation hospital and witnessing the soldiers learning how to use their prosthetic limbs. One young soldier had had his legs blown off with six inches of thigh left which is apparently a common injury. There was a poster of a child in a wheelchair on the wall of the hospital with no feet and she is one of numerous numbers of children who have and will continue to be wounded or killed as a result of this unbelievably vicious war.



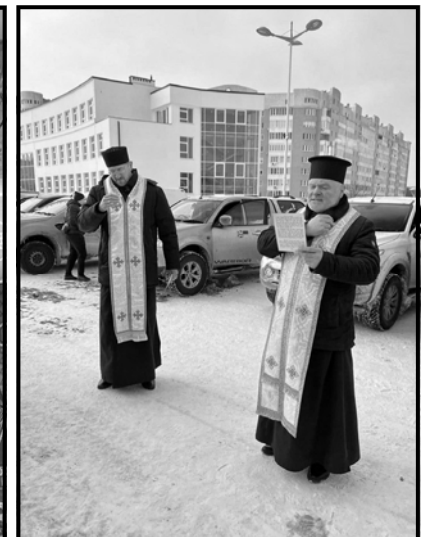
Garrison Church

We visited a Greek Catholic Church where two priests blessed the trucks and showed us their beautiful church. The murals remain uncompleted as the artist is away fighting.

In contrast, the Garrison Church not only had photos of some of the thousands of soldiers killed but also a cloud of white origami birds flying overhead. We all found this evocation of those killed intensely moving.



Greek Orthodox Church



Blessing the trucks

We visited the cemetery, which used to be an empty green field but is now filled with rows and rows of the dead. Every grave includes a photo of the soldier who has been killed. We met and hugged weeping parents, and helped them clear the snow from the photographs of their children. Although we did not share the same spoken language, we were united in the common language of grief and despair at the futility of war. The tears we shed with those parents have come home with us and live on in our hearts.

We also had several talks in the evening to deepen our understanding of the situation there. Five veterans now enduring PTSD gave a talk, two of whom had suffered terribly in a Russian prison. The Veteran's Association supporting these men, women and their families is incredible, even extending support to families who now live in other countries.

Every day at 9 am Ukraine stops, including the radio. We all got out of our trucks – ours at a green light on the first day - and stood with our heads bowed for a minute. Many of us continue to do this every morning at 7 am, Ukraine being two hours ahead.

We have now passed the fourth anniversary of the full-scale Russian invasion. It is an astonishing achievement by the Ukrainian people to have stood up to the resources and savagery of the world's third superpower for four bleak intensely cold winters, often with no heat or electricity and thousands having had their homes destroyed.

Thank you to all those generous souls who supported this trip. Nigel and I hold this cause very close and will be returning on the October convoy this year. If you would like to contribute to this, we would be very grateful. Please email parisback14@gmail.com or ring if you would like to hear more about it on 07900 683 617.



Cemetery in Lviv

Paris Back, Washingford House

FROST LANDSCAPING LTD

- Paths & Patios including Porcelain & Sandstone
- Driveways
- Fencing
- Wood & Composite Decking
- Digger Work
- Hedge & Tree Trimming
- General Clearance and more.

Contact details below for any enquiries, free quotations available

Stuart Frost, High Bungay Road, Loddon. Tel: 07900 432108
Stuartfrost1985@icloud.com

CHARLIE GARLICK ELECTRICIAN

Mobile: 07999 640808

Email: charlie.s.garlick@gmail.com

Website: www.cgelectricalservices.co.uk

Alpington, NR14 7NY

Lady Mole Catcher™

Wildlife Management Specialist

The established, recognised and proven expert you can trust for the control of:

**Moles • Rats • Mice
Squirrels • Wild Rabbits
American Mink • Bed Bugs
Cluster Flies • Moths
Ants • Fleas • Wasp Nests**

Plus effective Wildlife-Proof Fencing

For a no-obligation consultation and quotation please contact Louise on:

**01603 25 99 45
07876 14 11 53**

louis@ladymolecatcher.co.uk

www.ladymolecatcher.co.uk

Prince Gardening Services

Need a gardener or handyman?

Garden maintenance, Mowing, Hedge Trimming, Pruning, Planting, Fencing, Handyman Work, Basic DIY jobs indoors and out, Reliable, Insured, No job too small.

Tel: 07741 479259 or email princegardening@icloud.com

CHRIS CLITHEROE PAINTER & DECORATOR

Interior and Exterior
Free estimates

Tel: (01508) 480283

The Cottage, Chapel Road, Ashby St Mary. Norwich NR14 7BH

Website Design

Professional Website Design and PC Support Services from PSLWeb.co.uk

- Low-cost website hosting,
- Domain name registration,
- Search engine optimization,
- Content Management,
- PC support, help and training.

Call now for a free no-obligation consultation and quote

01508 491622

www.pslweb.co.uk
21 Cherrywood, Alpington, NR14 7NJ

WE SAVE BEES

Buzz-Off®

Live Honey Bee Removal

We harmlessly remove and re-home bees and professionally repair any damage that bees have caused to your property

For a site visit and no-obligation quotation please contact Louise Chapman SA (Hons) PGCE

t: 01603 259945 m: 07876 141153
e: louise@buzz-off.co.uk

For further information about Honey Bee and Wasp removal and view case studies/testimonials visit: www.buzz-off.co.uk

ALDIS & SONS FARM SHOP

Church Farm, Framingham Earl
01508 492293 / 07831392347

Our Own Grown Veg and Salads

Large Selection of Fruits
Our Own Reared Lamb
Local Beef, Chicken, Pork and Game
Free Range Eggs
Fresh Cut Flowers
Water Softener Salt
Potatoes by the Bag

SUPPLIERS TO THE CATERING TRADE

R J Plumbing & Heating

- Bathrooms
- Heating
- Plumbing
- Gas & Oil
- Free quotes
- Renewables

Contact 07954 122085 | 07881 951591

GIBLING Florida Villas

Enjoy the holiday of a lifetime in our luxury villa close to Disney World, Universal Studios and all of central Florida's attractions and golf courses

Luxuriously equipped throughout - own swimming pool and games room, 5 large bedrooms, 2 are king sized suites, 4 bathrooms (3 en-suite), Sleeps 10 comfortably

We can advise you on every aspect of your holiday from flights to attraction tickets.

Contact: Jilly or Stephen Gibling 01508 480608
stephen@gibling.com www.gibling.com

Tiled floors cleaned and polished

 CRB checked Trusted Trader

1st Aardvark Professional Upholstery & Carpet Cleaning

Carpets, Rugs, Furniture, Curtains, Vinyl Flooring, Deoderising, Shielding, Patios, Pressure Washing, Domestic and Commercial

Competitive Rates
Fast Reliable Local Service

**01508 495064
07733 213840**

jamie@1staardvark.co.uk
www.1staardvark.co.uk

A Qualified Accountant and Tax Advisor offering a full accountancy and taxation service.

Including: VAT returns, payroll, bookkeeping, final accounts, tax returns and advice for individuals and companies.

njfaccounts

t/f: 01508 495559
e: office@njf-accounts.co.uk

A W PLASTERING

FOR ALL YOUR PLASTERING NEEDS

Domestic & Commercial Plastering

Call ADAM

Tel: 01508 480014

Mobile: 07733 107339

SPECIALISTS IN

- PLASTERING
- COVERING ARTEX
- RENDERING
- PAINTING & DECORATING

The Hollies Classroom Loddon

www.loddonnurseryschool.co.uk

Open 8am - 6pm for 0 - 5 year olds

Funded places available
Full and part days available
Holiday club for 2 - 9 year olds

Rated OUTSTANDING by Ofsted

Please telephone Jayne White for further information or to arrange a visit

01508 520286

info@loddonnurseryschool.co.uk

B-Spoked Cycles

Mobile Cycle Repairs, Sales and Servicing

Based in Bergh Apton and covering the surrounding area.

I come to you and repair your bike on the spot or I will collect and return it later



Contact Paul on **07905 857767** or B-spoked@hotmail.com

Robert Clough Carpenter/Joiner

The local service for ALL your carpentry/joinery needs, and MORE!!

Specialists in purpose made windows and doors for period and listed properties

Prompt, reliable and fully qualified
A local company, established 1988

All aspects of carpentry and joinery work undertaken

Ceramic tiling and domestic plumbing

Suppliers and fitters of high quality kitchens and bathrooms

01508 493711
www.robertclough.co.uk

ROCKLAND WINDOWS, DOORS & REPAIRS

Replacement uPVC 'Wood' or 'Aluminium' Windows and Doors, etc

Replacement sealed units
Insurance work undertaken

FASCIAS * BARGEBOARDS
GUTTERING * CLADDING
SOFFITS & DOWNPIPES

All Carpentry work & roof repairs

Mark Clayton, 87 The Street
Rockland St Mary, Norwich

Tel: 01508 538757
Mobile: 07710 124949

Angels with parachutes

The testimony of General Charles Duke, Lunar Module Pilot of Apollo 16

I once told my father about some friends who were pilots. One day God let them see an Angel sitting on the wing of the airplane. Well, my Dad had a good laugh "If I ever see an Angel, he had better be wearing a parachute."

Two years later, when my Dad was in the hospital, my brother led him to the Lord and a wonderful peace came over my Dad. All his fear of death had departed.

Then Dad died. A couple of hours later I got a call from a friend I had asked to pray. He said, "Charlie, it was about 5 pm that God showed me a vision of two Angels who were coming for your Dad to carry him to heaven. Has he gone?"

"He died just a few minutes after 5 pm", I replied, rejoicing that my Dad was in Heaven. Then my friend said, "Charlie, those Angels were a bit strange. They were both wearing parachutes. I have never seen an Angel with a parachute".

I was puzzled too until I remembered my Dad's words "If I ever see an Angel, he had better be wearing a parachute!".

The Little Dog Angel

High up in the Courts of Heaven to-day
A little dog angel waits;
With other angels he will not play,
But sits alone at the gate.
"For I know my master will come," says he
"and when he comes he will call for me."
And his master far on the earth below,
As he sits in his easy chair,
Forgets sometimes - and he whistles low
For the dog that is not there:
And the little dog angel cocks his ears
And dreams that his master's voice he hears.
And I know when at length his master waits
Outside in the dark and the cold:
For the hand of death to open the gate
And to lead to those courts of gold;
The little dog angel's eager bark,
Will comfort his soul in the shivering dark.



Author Unknown

Where is God?

Two little boys, ages 3 and 5, are excessively mischievous. They are always getting into trouble and their parents know if any mischief occurs in their neighbourhood, the two boys are probably involved.

The boys' mother heard that the local vicar had been successful in disciplining children, so she asked if he would speak with her boys. The vicar agreed and asked to see them individually.

The mother sent the 3 year old in the morning with a view to sending the older boy in the afternoon. The vicar, a huge man with a deep booming voice, sat the younger boy down and asked him sternly, "Do you know where God is, son?"

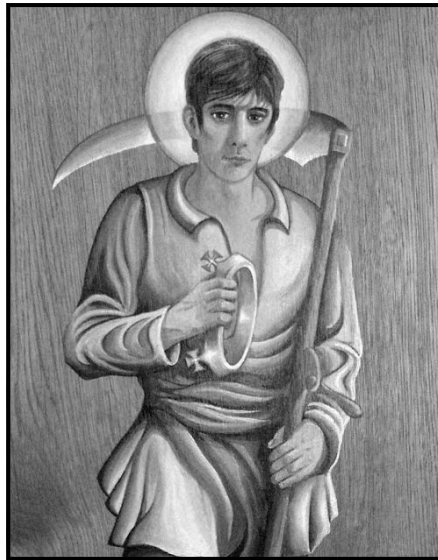
The boy's mouth dropped open, but he made no response, sitting there wide-eyed with his mouth hanging open. So the vicar repeated the question in an even sterner tone, "Where is God?!"

Again, the boy made no attempt to answer. The vicar raised his voice even more and shook his finger in the boy's face and bellowed, "WHERE IS GOD?!" The boy screamed and bolted from the room. He ran directly home and into his bedroom, slamming the door behind him.

When his older brother found him, he asked, "What happened?" The younger brother, gasping for breath, replied, "We are in BIG trouble this time! GOD is missing, and they think WE did it!"

John Pountain

St Walstan (975-1016) - a Norfolk Saint



St Walstan's Day is celebrated each year in Bawburgh, when a Patronal Service is held on the nearest Sunday to 30 May, his feast day.

St Walstan is patron saint of farmers, farm workers, farmhands, mowers, haymakers, reapers, herdsmen, villagers, farms and farm animals.

He is usually pictured with a crown and sceptre, with a scythe in his hand and cattle near him.

Pre Reformation icons of him are found mainly in Norfolk and Suffolk, but spread to Buckinghamshire, Kent and Rongai in Kenya, where a church was dedicated to him in 1988.

By popular demand, he was declared a saint and a new chapel was erected on the north side of St Mary the Virgin Church in Bawburgh, where he was buried. The church was later re-dedicated, with St. Walstan as co-patron.

Walstan was born in Bawburgh in 975 AD to a wealthy family. His father was Benedict and his mother was Saint Blitha of Martham, a relative of King Ethelred the Unready and his son, Edmund Ironside.

His parents had a library and Walstan came to love reading. He was deeply impressed by a verse in Luke's Gospel, "*In the same way, none of you who are unwilling to give up all of your possessions can be my disciple*", which touched his heart so deeply that he decided to leave home at the age of twelve and take up a life of penitence and humility.

He travelled via Costessey (where he exchanged his own clothes for those of a beggar) to Taverham where Nalga, who owned a large farm, offered him work. He remained at Taverham till the end of his life, applying himself to the meanest and most painful labour in a perfect spirit of penance and quietness, fasting and spending time in fervent prayer, keeping his royal origins a secret and giving away the wages he earned. Through his prayers people were cured of many illnesses, and animals were frequently brought to him for healing.

He died on 30 May 1016 while scything a hay crop in a meadow after seeing a vision of an angel. The villagers laid his body on a cart pulled by two white oxen and he was taken to Bawburgh, where he was buried. The oxen stopped three times on the journey - at Taverham, Costessey and finally at Bawburgh - and in each place a spring arose.

The sites of St. Walstan's birth, work and death, together with Costessey, became places of pilgrimage and in medieval times people visiting his shrine included local farmers and farm labourers. His shrine remained a site of pilgrimage until the Reformation, when his relics were destroyed in 1538. The first official pilgrimage in modern times took place in 1998.

The ancient well at Costessey, though dry for many years, was rediscovered and is visible west of the site of Costessey Hall, near a housing estate, in the grounds of the local golf course. There is also a well in Taverham, not far from the church, which may be from the spring which appeared on the day Walstan died. It lies to the south of the church at the end of the churchyard in the grounds of a privately-owned property.

St Walstan's Well at Bawburgh, a little way downhill from the church of St Mary & St Walstan, has been restored and is full of water. It is the only surviving spring out of the three connected to the 10th-century legend and is situated on private garden land behind the church. Small, respectful groups are welcome, but groups larger than four should contact the rector.



A festival service and blessing of the well are held annually in May to celebrate St Walstan. The site was historically a major pilgrimage centre.



Rockland St Mary Benefice

This edition of *Eleven Says* may well plop through your letterbox or appear on your screen halfway through Holy Week, so at the risk of repetition here are the remaining services of Holy Week and the beginning of Easter:

On Wednesday **April 1st** we share an early morning **Communion** at 7.45 am in The Barn.

On **Maundy Thursday, April 2nd**, at 10 am in Claxton Church **Communion** we recall the Last Supper.

On **Good Friday, April 3rd**, at 10 am **Family Worship** at Surlingham is an all-age opportunity to hear and respond to the story of Jesus' crucifixion.

Still with the Cross in the Barn at 2 pm recalls Jesus' last hour on the cross.

On **Holy Saturday, April 4th**, we celebrate the start of Easter with the **Lighting of the New Fire and Communion** at Rockland St. Mary at 7.30 pm. This candlelit service welcomes back the light of Christ, and in his light we renew our baptism vows.

On **Easter morning, April 5th**, we welcome Easter dawn at the **Sunrise Service** on Rockland Staithe at 6 am. **Communion** will be celebrated at Claxton and **Family Worship with Easter Hymns and Readings** at Bramerton at 9.30 am, 11 am **Communion** at Kirby Bedon and at 3.30 pm **Easter Hymns and Readings** at Surlingham.

Joint Annual Parochial Church Meeting (Benefice AGM) - This year's Rockland Benefice Annual Meeting takes place on **Wednesday May 13th** at The Barn at Rockland Rectory, beginning at 7.30 pm. Please come along as we review the past year, elect members to our church councils and look forward to the future and meet one another over cheese and wine!

News from the Barn - A huge 'thank you' to our friendly and hardworking team who made **Warm Welcome** such cheerful events for all who came to our weekly Monday gatherings. We are very grateful to Rockland St. Mary Parish Council, Rockland Poors' Trust and South Norfolk District Council for their generous support. We've moved back to monthly opening on fourth Mondays and **our next date is April 27th, 11.30 am - 2.30 pm**. There will be no Warm Welcome in May due to the Bank holiday. Please look out for more dates in future editions of *Eleven Says*.

Art Café in the Barn is happening on **April 22nd and May 13th**. Please drop in between 10.30 am and 12.30 pm, for good company, fresh coffee and some art!

Online Art Café meets next on Zoom at 10.30 am on **April 29th and May 27th**. Please contact Nick for your Zoom invitation and details of our lively and varied programme.

Still at the Barn on **May 3rd** offers a quiet, informal space for reflection, discussion and response. We gather at 4 pm and end by 5.30 pm.

Christian Aid Week May 10th - 16th

Over 55% of the world's population live in urban areas, projected to rise to 70% by 2050. This year's Christian Aid Week focuses on developing urban farming to lift people out of poverty and make the cities of the future more sustainable. Please give generously to this year's appeal if you are able..

Look out for collections and fundraising events in your area. There will be Christian Aid envelopes available in church porches, which you are welcome to put in the Rectory letterbox, or you can donate online by following this link <https://give.christianaid.org.uk/donate/CAM-009429> Thank you.

Another thank you . . . to everyone who supported February's Christingle services and events, which raised £175.53 for the Children's Society.

Revd Nick Garrard: 01508 538014



Thurton Benefice

Confirmation Service: I am delighted that Bishop Ian will be coming to the Benefice on **Sunday 25th October 2026** for a Confirmation Service. In the Anglican tradition, confirmation is the second sacrament of initiation which completes the process of membership started with the candidate's baptism and allows them to make a personal, mature decision to affirm the promises made on their behalf through infant baptism. Through it, the affirming believer receives the gift of the Holy Spirit by the laying on of hands and anointing with the oil of Chris and strengthens their relationship with God in Jesus Christ.

Confirmation can happen at any age in our adult life, usually from the age of 12 or 13 onwards. I will be arranging preparation classes in late summer/early autumn which will probably be on Saturday mornings in Bergh Apton Church. **The service and preparation classes will be open to anyone in the Bramerton Group and Loddon Deanery so please contact me if you would like an informal conversation about whether confirmation might be appropriate for you or a family member.**

The Annual Parochial Church Meeting (APCM) this year will be held on **Tuesday 28th April** at 7 pm at Alington & Bergh Apton Primary School. The APCM is an opportunity to hear reports from the various groups and activities associated with the life of the church in our benefice as well as a time when we discuss and approve various matters to fulfil our legal obligations, elect PCC members and receive the church accounts for approval. We will begin as usual with a joint meeting for agenda items relating to all parishes before moving into individual parish meetings to deal with local matters.

To ensure the meeting is effective and relevant I would encourage all electoral roll members to make every effort to attend. Refreshments will be served afterwards.

The Churches of our benefice belong to all parishioners and far from being a clubhouse for members, they are available at any reasonable time for private prayer and reflection which is why they are kept open during the day. They serve as focal points for important life events and have been used for generations for baptisms, weddings and funerals as well as for community events of fundraising and celebration. I am always available for an informal conversation with anyone considering being married in church or having a child baptised. **Please contact me by phone or email if you would like to know more.**

Midweek Communion: usually take place on Wednesday mornings at 10.30 am on a rotating basis in Ashby St Mary, Bergh Apton, Framingham Pigot and Thurton and on the first Thursday of each month at Yelverton. **Please see the separate table on Page 5 with details of locations and dates.** The service is from the Book of Common Prayer and lasts for 30 minutes. I am usually available after the service to meet with anyone who would welcome the opportunity to speak with me in confidence in a church setting.

Safeguarding: The churches of the Thurton Benefice are committed to the safeguarding, care and nurture of everyone within our Church community. PCC members and all volunteers who work with children or vulnerable adults have completed or are undertaking the appropriate safeguarding training and the PCCs are adopting formal safeguarding policies to ensure we comply with all current legislation. If you have a safeguarding concern please contact our Safeguarding Officer, Mrs Leo Smith, on 01508 493695 or me on 01508 484174. Where a child or adult is at imminent risk do not delay: call 999.

Home visits and Home Communion: I am very keen to visit anyone who is unwell or feeling isolated or lonely, either simply for a conversation or to share Holy Communion in their home. **If someone cannot make it to church, the church comes to them!** Please do contact me if you, or anyone you know, would like a visit. I am particularly keen to hear if a parishioner has been admitted to hospital; I would rather be told several times than not at all!

Revd Chris Ellis: 01508 484174



From the Registers

BAPTISMS

MARRIAGES

FUNERALS, BURIALS, CREMATATIONS, INTERMENT OF ASHES

14/01/26	Susan Mary THURMAN	Surlingham
22/01/26	Jill Mary WATSON	Kirby Bedon
24/01/26	Michelle Jayne FLYNN (Née BAKER)	Rockland St Mary
28/01/26	Pamela Margaret BEVAN (96)	Ashby St mary
28/01/26	Lorraine Susan CASON (Née ELLIS) (Interment of Ashes)	Surlingham
06/02/26	Cynthia Ivy May STEWARD (96)	Yelverton
10/02/26	David Charles TAYLOR	
17/02/26	Colin Frank BARTER (88)	Yelverton
18/02/26	Valentine Sidney 'Derek' SECKER (92)	Bergh Apton
20/02/26	Susan Ann STACKWOOD (Interment of Ashes)	Surlingham

Midweek Communions

April and May

All Services at 10.30am

April

Wednesday 1st – No Service

Thursday 2nd – No Service

Wednesday 8th – Bergh Apton

Wednesday 15th – Framingham Pigot

Wednesday 22nd – Thurton

Wednesday 29th – No Service

May

Wednesday 6th – Ashby St Mary

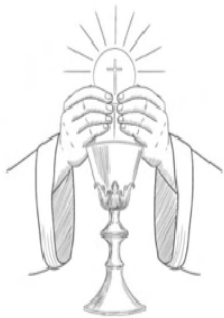
Thursday 7th – Yelverton

Wednesday 13th – No Service

Wednesday 20th – Framingham Pigot

Wednesday 27th – Thurton

All are very welcome to this said service of Holy Communion from the Book of Common Prayer. Services last 30 minutes.



Celtic Daily Prayer at St Mary's Church, Surlingham

This is the lovely view seen from inside Surlingham Church porch as we sit together to pray and meditate on a Bible reading and a reflection for the day. We meet at 10 am for approx half an hour on the 2nd and 4th Tuesday mornings of the month.

Future dates: **April 14th and 28th.**
May 12th and 26th.

Everyone from the Group is very welcome to join us. If you are unable to come but would like to receive the chosen material for the day, please email mandy.ansell44@gmail.com and I will send you a copy for your own reflection time.

Revd. Mandy Ansell, 01508 538654



Worship in Stillness is held at 9:30 am on Monday Mornings at Cherry House, Wheel Road, Alington. Half an hour of praise, silence, meditation and prayer followed by tea and coffee for those wishing to stay.

Enjoy Shakespeare in Norwich Cathedral's Cloister this summer



One of Shakespeare's most powerful and poignant plays will be performed in Norwich Cathedral's Cloister this summer as *Othello* takes to the stage for this year's Shakespeare Festival. The Lord Chamberlain's Men will perform the show on **Friday 3 and Saturday 4 July** at the annual open-air theatre event which is always a summer highlight at the Cathedral.

A story of deception, jealousy and a man that loved not wisely but too well, the tale of *Othello* is among the most captivating yet heartbreaking plays ever written. See it performed how William Shakespeare first saw it, as The Lord Chamberlain's Men – with a history stretching back to Shakespeare's original company – present this play in the open air, with an all-male cast and Elizabethan costumes, music and dance.

It is a welcome return for The Lord Chamberlain's Men who have previously wowed audiences at Norwich Cathedral with sold-out performances of shows including *Twelfth Night*, *Hamlet*, *Romeo and Juliet* and *A Midsummer Night's Dream*.

Tickets for *Othello* cost £24 plus booking fee and are on sale now. <https://cathedral.org.uk/events/shakespeare-festival-othello/>

Gentlemen, you are cordially invited to a

Mid-Day Mardle

An opportunity for men to quench their thirst for good company and conversation, share good food and, perhaps, to enjoy a glass of something.



New members are always given a warm welcome.

Ferry House, Surlingham

Wednesdays: April 15th, May 6th, June 3rd

(every month, normally 1st Wednesday)

Any time between 12 noon and 2 pm

Any questions, please contact David Fairbourn on 01508 538437 or email surlingham.midday.mardle@gmail.com

Wednesday Fellowship

This is a meeting for all people in the Bramerton Group and beyond! Meetings are held on the second Wednesday of the month 2 - 4 pm at Alington and Yelverton Village Hall. We have Christian and secular speakers followed by tea / coffee, cake and fellowship. All are welcome.

April 8th - Teapots. Speaker Jonathon Dutton

May 13th - Speaker from our Catholic Friends

June 10th - The Revd Canon Pat Atkinson on her 20th visit to India and updating on the work of the Vidiyal Trust

For more information please contact Pat Barter on 01508 493570.



Wheatfen Nature Reserve News

In February the Wheatfen team headed over to the John Innes Centre for a fundraising event hosted by South Norfolk District Council. We are very fortunate to be their chosen charity, nominated by Chair Deborah Sacks.



We hoped to have raised awareness of the Ted Ellis Trust and inspired people to visit the reserve.



A raffle at the event raised over £1,000 for Wheatfen!

Many thanks to the hard work of our volunteers who helped set up the displays and talked to the guests about our magical reserve.



Sally-Ann Meadows, Chair Ted Ellis Trust, Wheatfen Nature Reserve



South Yare ART TRAIL

Saturday 6th & Sunday 7th June 2026
Open 10am to 5.30pm - Free Entry

Art Trail | Exhibition
Open Gardens | Demonstrations
Refreshments

37 Artists open their studios to the public where you can see, experience & buy art. Discover a variety of media including painting, original print, sculpture, jewellery, ceramics, textiles and furniture.

Please see website to plan your visit
www.SouthYareArtTrail.co.uk

Willow Tree

Poor, sad looking willow tree
 You have a name fitting for thee
 Gently your boughs reach down to the river
 Leaves in the breeze, rustle, and quiver
 "You" cannot reach up to the sky
 Instead, you just bow and sigh
 Nothing ever seems to cheer you
 But willow tree, it's nice to be near you
 You have a certain charming grace
 No other tree could take your place.

Phyllis Christina Samuel



South Yare Wildlife Group

Eco churches – a response to the climate emergency

The South Yare Wildlife Group has invited Richard Beach the Eco-Chaplain for the Diocese of Norwich to speak about Eco-Churches at their forthcoming AGM on April 21st. Churches have an important role to play in helping protect the environment, not only because churchyards are often unspoilt natural habitats, but also because they have ancient, draughty, buildings that require extensive heating.

'Eco-Churches' is a non-denominational campaign, offering a structured approach to reducing a church's carbon footprint, managing land for biodiversity, and responding to the urgent, dual crises of climate change and nature loss.

Some churches in our area have already registered as an Eco-church, such as Claxton St. Andrew, which has gained a Bronze Award for its notable efforts, and where orchids are once again flowering in their beautiful churchyard. Whether you are a church goer or not it is important that we ensure that our precious church buildings and their lands are managed sustainably to preserve the natural environment and our natural world.



Pyramidal orchid in Claxton St. Andrew churchyard (Paul Carter)

Upcoming events



- Tuesday April 21st -
A.G.M. followed by "Eco-churches – a response to the Climate Emergency" a talk by Richard Beach. Eco-Chaplain. 7.30 pm at Claxton Village Hall. All welcome

- Sunday May 10th -
"Breakfast with the Birds" Dawn Chorus Walk around RSPB Church Marsh, Surlingham. Meet at the Ferryhouse Pub at 5.30 am, followed by full English Breakfast at 7.30 am (vegetarian option available). £12.00 members, £14.00 non-members, booking essential Peter Armitage **07834 810181**

See SYWG website for further details, and for events in 2026

www.southyarewildlifegroup.org



Loddon Flower Club

Loddon Flower Club meets on the first Tuesday of the month in St John's Lecture Hall, in George Lane, Loddon. Doors open at 6.30pm for a 7pm start.



We have visiting demonstrators who show us and give us ideas on how to use our garden flowers or a bunch from the supermarket. We also arrange visits and outings and hold the occasional workshops. All flower arrangements made on the night are raffled at the end of the evening. We have a short interval when we can enjoy tea, coffee and cake and have a catch up with friends.

Our next meeting is on **Tuesday April 7th** when Lorraine Gagen is demonstrating for us, her title being 'Into the Wardrobe'.

On **Tuesday 5th May** the demonstration is when Moira Neville will show us her take on 'Whatever the Weather'. (Hopefully it will be dry and sunny!)

We have no demonstration in June, instead we have a garden visit to 'Muddy Boots' in Bergh Apton. For more info give us a call.

Do come and give us a look, we would love to see friends old and new, no experience needed, cost for visitors is £7.50, or yearly subscription of £40 (pro rata). For more information call Tricia on 01508480522, or email: loddonflowerclub@gmail.com. We also have a website: www.loddonflowerclub.co.uk and a Facebook page. See you soon.

Poringland Community Centre
Overtons Way, Poringland, Norwich, NR14 7WB

Poringland Community Cinema

Friday 17th April - The Choral (15)
Drama. Stars Ralph Fiennes, Roger Allum

Tickets are £5 on the door (includes tea or coffee).
Doors open at 6.45 pm. Films start at 7.30 pm

Buena Vista Social Club

Friday Film Nights:

April 10th, May 1st

Contacts are: John on 01508 494358 or Carol on 01508 492630

ALPHA CONSTRUCTION

(East Anglia) Ltd

New Builds ✓
Renovations ✓
Extensions ✓
Carpentry ✓
Kitchens ✓

01508 538699
07747 778972

alphaconstructionea@gmail.com

YOUR FRIENDLY CHIMNEY SWEEP

PORINGLAND, NORWICH, NORFOLK

www.mrchimney4u.co.uk

Guild of Master Chimney Sweeps Member
I offer a professional, clean and friendly service/advice

Wood burners Inglenook fires Multi-fuel stoves Aga/Rayburn
Open fires Gas/Oil Inset stoves Biomass

Certificates Issued. CCTV Flue/Chimney Checks. Stoves Serviced/Repaired

David Wilson, 54 Cawstons Meadow, Poringland, NR14 7SX
info@mrchimney4u.co.uk 01508 493219 or 07835 757528

Trevor Myhill

Painter & Decorator

Over 25 years experience

(01508) 480657

FREE ESTIMATES GIVEN - NO JOB TOO SMALL



www.homedesignnorfolk.co.uk

Home Design

QUALITY FITTED KITCHENS & BEDROOMS

We come to you to design and quote
Wide variety of Doors and Worktops inc Corian/Granite

- ❖ Kitchen Refurbishments
- ❖ Highly Experienced
- ❖ Local reliable tradesmen
- ❖ Computer Aided Designs
- ❖ No obligation quotations
- ❖ Very Competitive Prices
- ❖ Supply and Fit or Supply only

Please Telephone
01508 538691 or
07810 77 33 23

8 Rookery Hill Rockland St Mary, Norwich NR14 7EW
Email: robin@homedesignnorfolk.co.uk



ADEPTA LTD

Accounting & Bookkeeping Services

Proud to be serving local people & businesses for 20 years

Free consultation | Upfront pricing | Experienced staff

- Annual Accounts
- Tax returns & advice
- Making Tax digital
- Bookkeeping & VAT
- Payroll & pension compliance
- New business start ups

Call Jacquie 01508 537024
jacquie@adepta-online.co.uk
www.adepta-online.co.uk

Hill Farm | Kirby Road | Kirby Bedon | NR14 7DU

John Hurrell & Sons

Lawnmowers and Garden Machinery

Sharpening, Service, Sales, Spares



- Power Driven Petrol Mowers
- New & Used Sales
- Hedge Cutters, Chainsaws
- Blower Vacs & All Garden Machinery
- Shear Sharpening Service

FLO GAS Bottled FLO GAS Stockist

COBRA **DANARM** Professional Garden Machinery

HAYTER **STIHL** **TORO** Count on it. **Webb**

Prompt, Reliable, Professional Service With Over 40 years Experience.
FREE Local Collection and Delivery.
Authorised Hayter Stockist and Service Dealer

Old School Building, Kirby Road, Kirby Bedon, Norwich. NR14 7DS
www.johnhurrellandsons.co.uk **01508 492244**

Reliable, Friendly, Family Business

Kingdom Landscapes

Individual or whole landscaping projects

For a free no obligation quote, please call with your enquiry.

- Patios • Paths • Driveways • Walls • Fencing • Decking
- Water features • Turfing • Clearance and renovation
- General construction work

Contact: Darren Barnes, Nunns Cottage, Framingham Pigot, Norwich, NR14 7QJ

For quality landscaping services call 07979724438 or 01508 495588 or kingdom.landscapes@yahoo.co.uk

Website: www.kingdomlandscapes.co.uk



YELVERTON GARAGE

A146 LODDON ROAD

SERVICE - DIAGNOSTICS - AIR CON - MOTs

01508 492758

V.W. AUDI SPECIALISTS



www.vwaudinorwich.com

QUALITY LIGHT COMMERCIAL VEHICLE SALES

WITH FULL AFTER SALES SERVICE

01508 494464

www.yelvertonvans.com

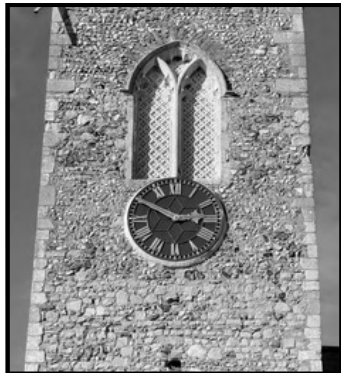
Village News

Bramerton

St. Peter's Church Parochial Church Council

"At the first stroke it will be precisely the hour".
"The clock it stands at ten to three, but is it right for you and me?"

Well, it is now as the village church clock in St. Peter's has just had automatic timekeeping equipment added by Smith of Derby who made the clock in 1928 which cost £168!



All mechanical clocks however well made, ours being well engineered, are subject to variations because of fluctuations in temperature, humidity and atmospheric pressure all of which can cause them to gain or lose time. To overcome this you can try adjusting the length of the pendulum, but it is difficult to get a fine adjustment or change slightly the weight of the pendulum by adding or removing small weights and ours has some old pennies balanced on the top.

Failing the above our intrepid tower climber, John Firmin, would go to the clock chamber and either stop the clock if it had gained or move it forward if it had lost time. Generally, it would be losing time so to reduce the frequency of visits he would set it 2 minutes fast, so it gradually became correct and then 2 minutes slow before having to be reset. Then of course there is also the British Summer Time changes to be made twice a year.

Various ideas for automatically speeding up or slowing down a clock were tried by altering the weight of the pendulum, but their accuracy was still somewhat lacking. Rather than trying to do both actions Smiths realised that it is easier to stop and pause a fast clock and so produced their PAR-100 Pendulum Regulator and Controller. It is one of those simple ideas that, like conjuring tricks, once you see how it is done you think "well yes that is obvious".

It works by setting the clock to gain within the hour, a detector on the main drive checks the clock's time against a quartz clock every hour and if the clock is fast then an arm extends out with an electromagnet and holds the pendulum until the correct time, then releases it. Smiths aim to keep the clock correct to within three seconds.

As there was sufficient funding the PCC placed an order with Smiths and the equipment was fitted in early February by their engineer Phil Cockell who also does the clock's annual service. John can now sit back with his feet up but suspect he will still visit his 'old friend' to see it steadily marking time towards its first centenary.

To see the regulator operating search YouTube for "Bramerton church clock auto timer".

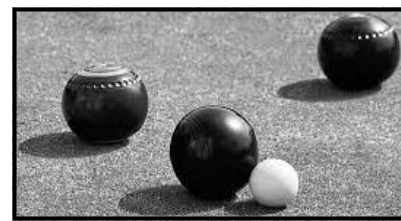
Tony Evans



Bramerton continued . . .

Bramerton & District Bowls Club

Bramerton & District Bowls Club was established over 60 years ago in April 1965. The first meeting was held at The Old School House in Bramerton. The princely sum of 5 shillings (25p) was agreed as a yearly subscription and each player to pay one shilling (5p) when they played a match.



Originally, matches were played at the White House in The Street, where Mr and Mrs Hanton lived, moving from there (when the owners left) to some land that was offered at the Rectory (Rectory Meadow) in 1969. In 1971 the AGM was a momentous one when George Ellis, seconded by Mr Fox, proposed that ladies should be allowed to join the club.

There was bad news in July 1972 when the club was told to vacate their green at the Rectory by the end of August. This was devastating news as they still had many fixtures planned that season. Fortunately the time was extended to the end of September. Bramerton Parish Council came to the rescue by offering land at the Recreation Ground which is where the club has stayed to the present day.

We are still an active club and always encourage new-comers so if you're interested and would like to come along for a practise/ instruction session on the green by Bramerton Village Hall, we will be starting some "roll ups" on Saturday afternoons at 2 pm from 11th April. We will also be having a pre-season meeting at the village hall on 16th April at 7 pm, where we will try to answer any questions you may have. For further details, please telephone Terry Henry 01508 538129 or Graham Hardy 01508 538103

Carleton St Peter

Future date: Carleton St Peter will be holding its annual flower festival again this year on Saturday 1st and Sunday 2nd August. I would like to thank all of you who have attended over the years to support this annual event and those who help to make it such a success. Let's hope for calm weather.

Claxton

Community Café

Our last lunch time café in February saw a good attendance and there was a lively buzz in the hall. In March we moved back to our normal time slot, 10 am - 12 noon. It was lovely to see some new customers who were quickly chatting to our more regular visitors. It really is a good place to meet people over a very reasonably priced cuppa.

Our April Café, on **Wednesday 1st April**, will have an Easter Theme with fun activities for the children. Come and enjoy the home baking, freshly brewed coffee and tea, and our popular bacon or bacon and egg rolls.

We would like to thank the small group who have been helping to clear up after the café. Their efforts have made a real difference.

Claxton Social Club

Where can you enjoy a pint of ale or a glass of wine for just £3? Claxton Village Hall on a Friday evening open between 8 - 11 pm. Everyone welcome.

Reminder:
Bramerton Group Quiz
Saturday 25th April at 7 pm

Hope to see you at Claxton Village Hall



Village News

Rockland St Mary

Rockland St Mary & District Gardening Club

The Gardening Club normally meets in the Rockland Parish Room on the fourth Thursday of each month. In the winter we have speakers whilst in the summer we have garden visits which begin in May. New members are always welcome.



At our February meeting Ken Abel gave us a very interesting illustrated talk all about Pelargoniums. We saw many of his prize winning plants for which he has won numerous awards all around the country. The meeting was very well attended. Members enjoyed a very informative evening which ended with a Q&A session that kept Ken on his toes!. He offered lots of advice about composts, the best way to do cuttings, about potting, feeding and watering to get the best out of our plants.

Thursday 23rd April Jim Paine will talk about The Art of Botany - An illustrated journey through the depiction of plants in art.

Our garden visits, which are always very popular, will begin in May and continue through the summer months until September. We will soon begin planning for our annual Summer Show, information will follow soon.

If you wish for further details or would like to join the Gardening Club please contact Ruth Everett on 01508 538231 or email everettapplebee@hotmail.co.uk

 *
Rockland Open Gardens Festival
 *
Saturday 13th June, 10am-4pm
 *
 There are 20 gardens open to the public throughout
 Rockland St Mary and the surrounding area.
 *
 Maps and tickets available from the Parish Room, The Street,
 Rockland St Mary. £5 per adult, children free
 *
 Café open all day in the Parish Room with plant sales
 *
 Proceeds going to Friends of Rockland St Mary School
 *

Rockland St. Mary & District W.I.

We had a fun evening in February, when we were entertained by a group of actors performing a radio Murder Mystery Play. They kept us guessing the whole evening, with only one member correctly guessing the murderer! Well Done Jean!



On **Tuesday April 14th** we will welcome our speaker Liz Scott (another well-known performer from Bramrocks) as she brings to life some characters from a "Living History"

At our meeting on **Tuesday May 12th** we will be intrigued to learn "How to become a Roman Emperor" with Ralph Jackman.

All meetings begin at 7.30 pm in the Margaret Mack Hall. For further details or request for a lift please contact Ruth 01508 538231 or Sandra 01508 538100.

Surlingham

Church News - One minute it feels like Spring has arrived the next we are plunged back into grey overcast days and frozen fingers. But there is lots of bird song and more violets than ever before in the churchyard. The ashes of two of the village have been laid in the churchyard recently: Sue Stackwood, who was a helpful lady and Lorraine Cason (Ellis) who I remember as a lovely schoolgirl.

Now in Lent, a time of reflection shared one evening a week among people from this group of parishes, led by Canon Paul Thomas OBE. The music, words and stories made for a special time.

The 6th March was the World Day of Prayer when groups all around the World gathered for a service, this year put together by Christian women in Nigeria and titled 'I will give you rest, come'. A message of hope for women coping with poverty and social difficulties in that country but when there is so much 'unrest' around the world it's appropriate to all.

Over the Easter holidays there will be a Butterfly Trail through the village, organised by FOSS as a community event. On **6th April** (Bank Holiday Monday), you can decorate your own butterfly to take home. There will be cake!

Surlingham WI - On **2nd April** there is an Open WI meeting with a talk on the Hoxne Hoard (see on Google, it's amazing). Then on **1st May** there will be fun with Bingo!

Allotments - The allotments that were overgrown with brambles and home to a skipful of rubbish have now been cleared. A heroic feat! Wishing you successful vegetable growing.

Pippa

Seasonal Gardening Tips

A gardener's work is never done. Any outdoor space, big or small, requires year round attention, whether you're cultivating a kitchen garden or curating a minimalistic haven of relaxation. That being said, when it comes to keeping on top of your garden it can be difficult to know where to start - especially as the seasons change. Which is where our season-by-season garden calendar comes in handy, to help you decide which jobs to take when, and turn your garden into a space to be enjoyed all year round.



Spring

Where better to start than spring? When the lighter days and warmer air entice us all into the great outdoors. Which is just as well, because there's plenty to do this season!


- Refresh your container plants
- Pressure wash the patio
- Clean your outdoor furniture
- Mow and feed the lawn
- Fill your borders with plants
- Harden off tender and young plants
- Prune your roses and hydrangeas
- Prune early flowering shrubs after they have flowered
- Deadhead your daffodils and tulips
- Plant summer bulbs
- Mulch your border



Summer

While the Great British Summer can be unpredictable at the best of times, make the most of those long, hazy summer days with our list of top jobs to keep your garden in ship shape.

- Prune late flowering deciduous shrubs after they have flowered
- Clip and prune hedges, fruit bushes & trees
- Regularly mow the lawn
- Plant autumn bulbs
- Feed and deadhead roses
- Cut back geraniums and other summer perennials
- Water tomatoes daily
- Feed houseplants weekly
- Trim conifers to maintain an even shape
- Water hanging baskets twice daily

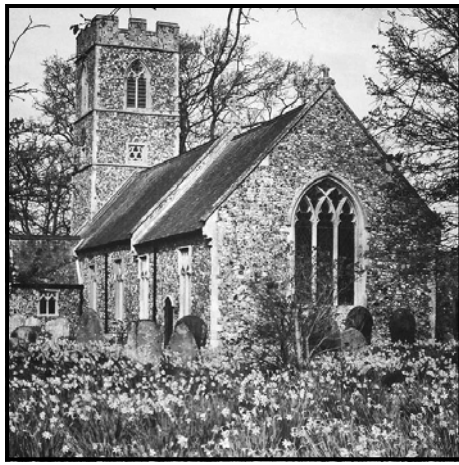
ACTION GROUP ROOK RAMBLE, APRIL 19th 

Meet at Rockland St Mary Staithe (NR14 7HP) at 11 am - tea/coffee available. River walk to Claxton village hall for lunch. Return via footpaths to Rockland St Mary with the option to return to car park or walk to the Parish Room for dessert. £15 per person, children £5:00. Pre-lunch walk 3 miles. Pre-dessert walk under 2 miles. Booking is essential: contact Jane Paterson, 01508 538415, 07545888007 or email: apatersonvt029@gmail.com

The Daffodil Bulb

A letter came from a Charity enclosing a Daffodil bulb as a gift. Then the Lord began to speak to me.

“Consider this daffodil Bulb. It is brown, wizened, covered in dirt and ugly. As it is it serves no purpose. If it stays like this one day it will be thrown into the bin.



But should the Daffodil bulb come into contact with water, something wonderful begins to happen. Shoots appear thrusting deep into the earth. Then, in its season, a flower unfolds, beautiful and fragrant. The Daffodil has achieved the purpose for which it was created.”

It was then that I realised that we, too, are like Daffodil bulbs. We become increasingly dried up with selfishness, and sad as we approach the end of an empty life.

Oh, yes, we may have attained riches and worldly success, but there has been no flower, no fragrance in the sight of heaven.

But if we search earnestly for the Living Water to be found in Christ alone, everything can change. The dirt of such things as pride, lust, and selfishness is gradually washed away. Then shoots of love, joy, peace, gentleness and self - control appear. They form the beauty of Jesus in us and their fragrance tells people we have been with Him.

A great film star said at the end of his life, ‘I always felt I was created for some purpose in this life but I never found it. I missed it.’ What will you say at the end of your life?

The photo, depicting Kirby Bedon Church surrounded by Daffodils, is courtesy of Paul Rooker.

‘Bugs and Trugs’

I wish I had a garden in which there are no weeds,
Where scented flowers pervade the space, a lovely place, indeed.
Where people passing by it cry what a lovely sight,
But when asked ‘how?’ about it I’ll have to say what’s right.

I haven’t got a magic touch, my fingers are not green
The answer is I fill my trug and squirt the bugs unseen.
To keep it nice demands a price with aching back and knees,
The trouble is it doesn’t last, I wish it did - yes please!



I wonder how the Queen may fare with garden parties yonder,
She doesn’t deal with bugs and trugs yet guests break out in wonder.
But when the time approaches The Queen comes into sight,
To get a glimpse of royalty can really make your night.

A greater party has been booked to which we’re all invited,
To meet with Christ the King of Kings should makes us quite excited.
You do not have to earn your place through Christ it’s freely given,
He died so we can have a space in His eternal Heaven.

Though Heaven is a lovely place our focus must be changed,
To live with Christ and share His life is something to be gained.
Away with bugs, away with trugs, no need in this domain,
This perfect life away from strife eternally remains.

Leslie Moore

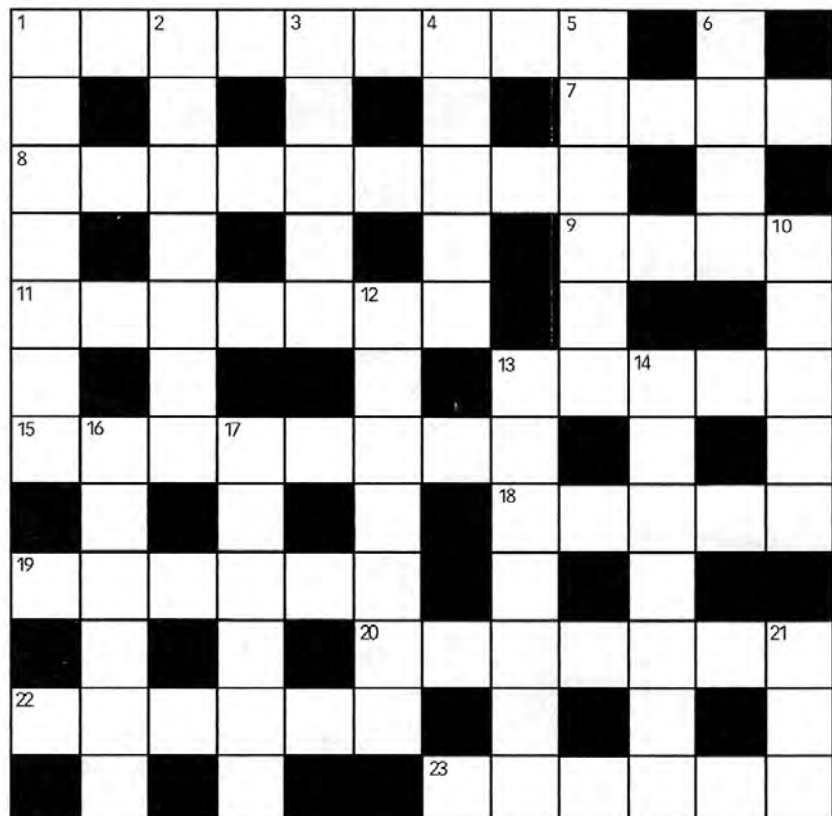


A crossword with a gardening theme

Hopefully, by the time you read this the weather will have warmed up (fingers crossed) giving us all a bit more incentive to maybe do some weeding and tidying around the borders in our gardens. Then, with some nice warm sunshine, we might sit outside, look around and enjoy what we see and know all our hard work was worth it.

Enjoy this puzzle while you put your feet up and maybe enjoy a cuppa . . .

The answers can be found on the bottom right of Page 15.



ACROSS

- 1 Sow __ plants, such as tagetes, in the vegetable plot to attract beneficial insects (9)
- 7 Genus commonly called gorse (4)
- 8 Seeds of this flat-podded pea variety can be sown now (9)
- 9 Eliminate this mat-forming invader from lawns (4)
- 11 Latin name meaning scented, as in *Viola* __ (7)
- 13 Tropical American genus grown for its rosettes of showy, pointed leaves (5)
- 15 Ponds should be full of these infant amphibians (8)
- 18 Lambs’ __ is a descriptive name for the distinctive male catkins of hazel (5)
- 19 The art of growing tiny trees in pots (6)
- 20 Microscopic pest that can kill potatoes (7)
- 22 Fuji cherry is the popular name for *Prunus* __ (6)
- 23 The segments of a flower corolla, often colourful (6)

DOWN

- 1 Fork __ into flower 6 now to prepare for summer bedding (7)
- 2 __ fly is a pest whose larvae tunnel through beetroot leaves (7)
- 3 __ *sativa* is better known as oat (5)
- 4 Genus of tropical evergreen shrubs and trees, mostly from Asia, with colourful blooms (5)
- 5 Hard, aromatic seed from the tropics used as a spice (6)
- 6 Flower __ will need hand weeding every fortnight (4)
- 10 Dogwoods and willows brighten the winter garden with their colourful __ (5)
- 12 Piggyback plant is a name for __ *menziesii* (7)
- 13 Genus of clump-forming perennials with striking, plume-like blooms (7)
- 14 American state that gives its name to a popular cypress (7)
- 16 Fruits of the oak (6)
- 17 Female reproductive organ of a flower, comprising one or more carpels (6)
- 21 Cornelian cherry is a name for *Cornus* __ (3)



PAWS & CLAWS
Grooming 

A complete dog grooming service with kindness and care. All breeds welcome. Trimming, Grooming, Shampooing, Nail Clipping, Ear Cleaning

Telephone Jane on
01508 538757

YOUNGS
FUNERAL DIRECTORS OF LODDON

At your time of need we are here to help you;
"Quiet guidance, gentle words and our professional knowledge will help you make the right decisions for you and your family."
-Rachael Barber

'Providing the very best care'

19 Bridge Street Loddon NR14 6NA
Tel: 01508 528274

Buyer of old car spares, manuals and badges.
Also interested in enamel signs, pub memorabilia, coins, tools, old toys, air rifles and any other old interesting objects.

Steve Webster
01508538453 Evenings / Weekends Only
07734591929
stevewebster1955@hotmail.com

Will arrange visits at your convenience. You never know what you can find in your shed or garage!



Simmonds Clockmaking Ltd
MEMBER OF THE BRITISH HOROLOGICAL INSTITUTE
Repairer, Conserver and Maker of Clocks

Tel/Fax: (01508) 548085
No. 3, The Raveningham Centre, Beccles Road,
Raveningham, NORWICH. NR14 6NU
www.clockmaking.co.uk



ARB ENGINEERS
TREE & HEDGE SERVICES

TREE REMOVAL
WOODCHIPPER HIRE WITH OPERATOR
STUMP GRIDING
PROFESSIONAL WASTE REMOVAL
HEDGE CUTTING
POLLARDING
CROWN LIFT/ REDUCTIONS
FULLY INSURED
ON SITE MILLING
ON & OFF ROAD VEHICLES

CALL TODAY FOR YOUR FREE QUOTE
07748 461202
WWW.ARBENGINEERS.CO.UK



Looking To Improve Your Home Then We Can Help!

- GARDENS & LANDSCAPE DESIGN
- DRIVEWAYS & PATIOS
- EXTENSIONS
- DIGGER / MICRO DIGGER HIRE
- DRAINAGE
- FENCING
- ALTERATIONS & ANYTHING ELSE!

If there is a project that you feel we could help you with, please contact us on 07930 378804
Email: gbgcivilsltd@gmail.com

GB GROUNDWORKS & CIVILS LTD.
ALPINGTON, NORFOLK
T 07930 378804



STARKINGS WATSON
HYBRID ESTATE AGENTS

Thinking of selling or letting?

Call **01508 356456** Poringland Office
2a Shotesham Road, Poringland

Call **01508 820830** Loddon Office
2a High Street, Loddon

Free advice from your local property experts.

You'll like the way we **move.**
For our full list of available properties, or for a FREE INSTANT online valuation visit
starkingsandwatson.co.uk

Products and services advertised in this publication are not necessarily endorsed by the Eleven Says editorial board.
Articles in this publication do not necessarily express the views of the Bramerton Group Clergy or the Eleven Says editorial board.

Rockland St Mary Post Office and Store

Open 7 days a week for all your local needs

All Post office services including:

Free cash withdrawals / Deposits from most major banks, Euros and Dollars in stock. Motor vehicle licence office. Evri, Amazon, DPD Inpost locker as well as Royal Mail.

Store: Fresh fruit, Vegetables and Milk, Fresh Bread baked in store. Wide range of Groceries, Newspapers, Magazines, Stationery, Greeting Cards, Off Licence, Sweets, Soft Drinks, Ice-cream. Electric, Gas and Mobile Phone Top-ups. National Lottery and more.

HOT and COLD FOOD and DRINKS TO GO

Call Karen, Alan or Emma Tranter
01508 538123

rocklandstmarypo@hotmail.com

Opening Times

Shop: Mon-Thur: 8am-7pm. Fri-Sat: 8am-8pm. Sun and Bank Holidays: 9 am-4 pm

PO: Mon-Fri: 9am - 1pm. 1.30pm - 5.30pm. Sat: 9am - 12.30pm

MURDOCH Opticians

- Sight testing
- Spectacles
- Contact lenses
- Easy parking / all ground floor

Opening Hours

Mon-Fri: 9am - 1pm 2pm - 5pm

Sat: 9am - 12 noon

Sun: closed

4 The Street, Poringland NR14 7JR

01508 494670

www.murdochoptical.com

JR HANDYMAN SERVICES

Tiling Laminate flooring
Plaster repairs Decorating
Fixtures and fittings
Fencing Plumbing repairs
Flatpack assembly Paving

Your reliable local handyman

Contact Jason on

Mobile : 07962 125002

Email : jasongrix@gmail.com



'Applebee'

Rockland St Mary
01508 538231

Beekeeping equipment,
courses and advice



Local Honey for sale

Selection of local grown fruit
and vegetables available

Contact:
Ruth and John Everett

Firewood

Seasoned Hardwood, mostly Ash, Oak, Beech
Softwood and Mixed loads also available

Available from Autumn 2018 onwards

Free delivery 10 miles radius of Framingham Pigot
Delivered in bulk bags or tipper trailer loads

Contact: Darren Barnes, Nunns Cottage,
Framingham Pigot, Norwich. NR14 7QJ

07979724438 or 01508 495588
kingdom.landscapes@yahoo.co.uk

www.kingdomlandscapes.co.uk



G J STOKES

NORFOLK REED THATCHER

FREE ADVICE and ESTIMATES
COUNCIL APPROVED.
COMPETITIVE RATES

PEAR TREES, RECTORY LANE,
ROCKLAND ST MARY,
NORFOLK. NR14 7EY

Tel: 01508 538267

07715 711637

Email: enquiries@gjstokes.co.uk

Website: www.gjstokes.co.uk

NORFOLK SOCIETY
AWARD WINNER



L A Robinson

Architectural Services Ltd



- ✓ Planning Drawings
- ✓ Building Regulations
- ✓ Architectural Design
- ✓ Listed Building / Conservation



www.larobinson.co.uk

07786753349

louise@larobinson.co.uk

WOODLAND STOVES

The White House, Mill Road,
Ashby St Mary, Norfolk, NR14 7BN
w: www.woodlandstoves.co.uk
t: 01508 480351

AN EXTENSIVE AND COMPETITIVELY PRICED RANGE OF WOODBURNING AND
MULTIFUEL STOVES ON SHOWROOM DISPLAY.

FULLY QUALIFIED HETAS REGISTERED INSTALLATION SERVICE AVAILABLE.
SUPPLIERS OF FLUE LINERS, FLUE PIPES, CHIMNEY COWLS AND ACCESSORIES

Please Phone or check our website for opening times.



Chimney Sweep

Certificates Issued
Insurance Approved
Prices from £40

Discounts for Multiple Sweeps

Call Tom
07816 462542
01508 528522

or find me on Facebook
[sweep&vac chimney sweeping](https://www.facebook.com/sweep&vacchimneysweeping)



ARBORCARE (UK) LTD



Arborcare Tree services specialises in all aspects of tree care including;

Tree Felling, Crown reduction, Crown Thinning, Crown Lifting, Deadwood
removal, Pollarding, Stump Grinding, Hedge cutting and Garden Clearance.

We also can help with TPO and Conservation applications where necessary.

Free quotations and advice. Fully qualified and insured.

Travis Sarginson Tel: 01508 492730 Mob: 07905 612127

travis@arborcareuk.co.uk

www.arborcareuk.co.uk

1 Fox Rd, Framingham Pigot, NR14 7PZ



DHS

Landscaping

Complete landscaping service available including: paths,
patios, driveways, decking, turfing, seeding, fencing, planting,
tree work, clearance & renovation and creating low
maintenance gardens. Garden design service available.

Call Mark for any enquiries, free quotations &
advice: 01508 538734 / 07798 516919

email: dhslandscaping@gmail.com

or find us at: www.dhslandscaping.co.uk

DHS Landscaping Ltd. The Old Forge, Bramerton, Norwich NR14 7DW





Care that works for you

Our founder, Peter Shaw, was less than impressed with the care received by a number of his relatives, he believed there must be a better way.

Focusing on the quality of care, careful recruitment, high quality training and paying The Home Team's professional carers better and more fairly than other home care companies.

Above all, it's about allowing enough time to care for our clients as they would really like. On time and never rushed, our care is tailored specifically to the individual client. Which is why, according to the national review site homecare.co.uk, The Home Team is one of the top client-rated home care companies in Norfolk.

- 1 Companionship
- 2 Personal care
- 3 Medication
- 4 Home help
- 5 Dementia care
- 6 Appointments
- 7 Shopping & errands
- 8 End-of-life care

Please contact us to discuss how we might be able to help:

☎ **01603 926465**

info@thehometeam.care
www.thehometeam.care



The Home Team is a Norfolk company.



SM Osteopathy

Osteopath in Surlingham

Restoring movement and relieving pain naturally and effectively

I have over 28 years experience in treating back and neck pain; headaches; shoulder, hand and wrist problems; lower limb pain; infant, paediatric and pregnancy issues, as well as sports injuries.

I use hands on osteopathic techniques, dry needling, taping, ergonomics advice as well as exercise and rehab programmes to help restore balance to your body so you can feel better.

Book online www.smosteopathy.co.uk

WhatsApp: 07944 855101

info@smosteopathy.co.uk

Tremere, Mill Road, Surlingham, NR14 7AF



JERMYN & CO.
CHARTERED ACCOUNTANTS

Your local Chartered Accountants

Bespoke tax planning and advice

Tailored strategies for individuals and businesses.

Making Tax Digital

Feeling overwhelmed? We help you stay compliant and ready for the changes ahead.



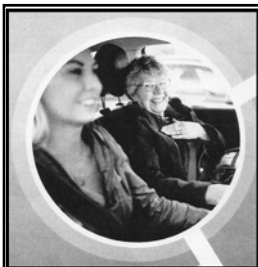
01508 824105

office@jermyn.co.uk

Scan for a free consultation



KARL JERMYN
Director



VOLUNTEER DRIVERS NEEDED IN YOUR AREA!

- DO YOU ENJOY DRIVING?
- MEETING PEOPLE?
- HELPING OTHERS?

WHY NOT GIVE A GIFT OF A LIFT

As a Travel Norfolk Volunteer driver, you'll help people get to:

- Medical and Health Care appointments
- Day Care
- Essential Shopping
- Social activities;

Unpaid role. Expenses covered for every journey. Learn how you can make a big impact by becoming a volunteer driver.

www.norfolk.gov.uk/volunteerdriers or call us at 0344 800 8020 (Mon – Fri. 0900 - 1700)

Norfolk County Council



Learn how you can make a big impact by becoming a volunteer driver:

www.norfolk.gov.uk/volunteerdriers

or call us at 0344 800 8020 (Monday to Friday 0900 to 1700)



Surlingham Timeshare Swimming Pool



Are you interested in having an indoor heated swimming pool exclusively for yourself, family or friends? If so, please ring (01508) 538206.

3, 6 or 12 monthly bookings for weekly slots available, also one offs. Open seven days a week 6.30 am - 10 pm. We are situated 6 miles SE of Norwich between Surlingham and Rockland St Mary.

Yare Valley Farm Shop open 8 am - 9 pm. Producers of Yare Valley Rapeseed Oil. To order: 01508 538206 or www.yarevalleyoils.co.uk

R.B.COPPING FUNERAL SERVICE

Independent Family Funeral Directors Since 1935

- For Personal Attention with Dignity and Respect
- Private Chapels of Rest
- Memorials & floral tributes supplied
- Pre-paid funeral plans available



125 The Street, Poringland,
Norwich, NR14 7RP

Tel. 01508 494434

56 Langley Road, Chedgrave,
Nr Loddon NR14 6HE

Tel. 01508 521159

www.coppingfunerals.co.uk



Thurton Benefice: Revd. Chris Ellis – Ashby St Mary. Thurton. Bergh Apton. Framingham Pigot. Yelverton with Alington.

Rockland St Mary Benefice: Revds. Nick and Helen Garrard. Revd Mandy Ansell – Bramerton. Carleton. Claxton. Kirby Bedon. Rockland. Surlingham.

Midweek Communion held in April and May can be found on Page 5..

	5th April Easter Sunday White or Gold	12th April Easter 2 White	19th April Easter 3 White	26th April Easter 4 White	3rd May Easter 5 White	10th May Easter 6 White	Thursday 14th May Ascension Day	17th May Easter 7 White	24th May Pentecost Red	31st May Trinity Sunday Gold or White	7th June Trinity 1 Green
Ashby St Mary	11.00 HC			11.00 HC	11.00 MP	10.00 Benefice			11.00 HC		11.00 PT
Bergh Apton	10.00 HC		09.30 PT	09.30 HC	09.30 PT			09.30 PT	09.30 HC BCP		09.30 PT
Bramerton	09.30 Easter		11.00 HC							11.00 FW	
Carleton St Peter	11.00 MW				11.00 HC						11.00 MW
Claxton	09.30 HC			10.00 All-Age @ VH	09.30 HC			09.30 MW			09.30 HC
Framingham Pigot	11.00 HC		11.00 HC		09.30 HC BCP			11.00 HC			09.30 HC BCP
Kirby Bedon	11.00 HC (BCP)							11.00 HC			
Rockland St Mary	6.00 Sunrise Service @ Rockland Staithe	09.30 HC	09.30 MW		16.00 Still @ The Barn	09.30 HC		09.30-11.00 Open Church @ The Barn		GROUP SERVICE 09.30 HC	
Surlingham	15.30 Easter Hymns & Readings	11.00 HC				11.00 HC	10.00 HC (BCP)		10.00 Ben HC		
Thurton		10.00 Benefice service			11.00 HC						11.00 HC
Yelverton	09.30 HC		09.30 HC	16.00 All 4	09.30 PT			09.30 HC	16.00 All 4		09.30 PT

CODE: HC = Holy Communion; E Praise = Evening Praise; FC = Family Communion; FW = Family Worship; MP = Morning Prayer; EP = Evening Prayer; .PT = Parish Team; VM = Vestry Meeting

Bible Readings Sunday by Sunday: December 2025 and January 2026

Date	Old Testament	Epistle	Gospel	
05/04/26	Acts 10.34-43	Colossians 3.1-4	John 20.1-18	Easter Day
12/04/26	Acts 2.14a,22-32	1 Peter 1.3-9	John 20.19-31	2nd Sunday of Easter
19/04/26	Acts 2.14a,36-41	1 Peter 1.17-23	Luke 24.13-35	3rd Sunday of Easter
26/04/26	Acts 2.42-47	1 Peter 2.19-25	John 10.1-10	4th Sunday of Easter
03/05/26	Acts 7.55-60	1 Peter 2.2-10	John 14.1-14	5th Sunday of Easter
10/05/26	Acts 17.22-31	1 Peter 3.13-22	John 14.15-21	6th Sunday of Easter
17/05/26	Acts 1.6-14	1 Peter 4.12-14;5.6-11	John 17:1-11	7 th Sunday of Easter
24/05/26	Acts 2.1-21	1 Corinthians 12.3b-13	John 20.19-23	Pentecost
31/05/26	Isaiah 40.12-17,27-31	2 Corinthians 13.11-13	Matthew 28.16-20	Trinity Sunday
07/06/26	Hosea 5.15-6.6	Romans 4.13-25	Matthew 9.9-13,18-26	Trinity 1

Please note: At Holy Communion, where only two readings are used, the first reading will usually be the Epistle, and the second will always be the Gospel reading. At other services where two readings are used, the first will usually be the Old Testament reading, and the second can be either the Epistle or the Gospel readings.



CLERGY OF THE BRAMERTON GROUP		ROMAN CATHOLIC PARISH OF PORINGLAND AND LODDON	ELEVEN SAYS EDITORIAL BOARD										
<p>Thurton Benefice</p> <p>Revd Chris Ellis The Rectory 29 Ashby Road THURTON NR14 6AX Tel: 01508 484174 Email: rector.thurtonbenefice@btinternet.com</p> <p>Explorers and HALOS are held at Thurton Village Hall every other Friday evening. For more information please contact Gary WATSON Youth Worker Norwich Youth for Christ Floor 2, Carrow House, King Street, NORWICH. NR1 2TG Tel: 01603 620678. 07747 471218</p>	<p>Rockland Benefice</p> <p>Revd Canon Nick Garrard The Rectory Rockland St Mary NORWICH NR14 7EY Tel: 01508 538014 Email: nickgarr39@aol.com</p> <p>Revd. Helen Garrard The Rectory Rockland St Mary NORWICH NR14 7EY Tel: 01508 538014 Email: broadsidecurate@aol.com</p> <p>Revd Mandy Ansell 44 The Street,, Rockland St Mary, NR14 7AH. Tel: 01508 538654 Email: mandy.ansell44@gmail.com</p>	<p>Parish Priest Fr Andrew Eburne, The Presbytery, 17 Uppgate, Poringland. NR14 7SH. Tel: 01508 494770. Email: frandreweburne@gmail.com</p> <table border="1"> <tr> <th colspan="2">Times of Masses</th> </tr> <tr> <td>Saturday</td> <td>6 pm</td> </tr> <tr> <td>Sunday</td> <td>9 am</td> </tr> <tr> <td>Tues</td> <td>6 pm</td> </tr> <tr> <td>Wed -Saturday</td> <td>10 am</td> </tr> </table> <p>Staff days off:</p> <p>Monday Revd Chris Ellis Thursday Revd Mandy Ansell Friday Revd Nick Garrard Revd Helen Garrard</p> <p>Safeguarding Officer Leo Smith 01508 493695</p>	Times of Masses		Saturday	6 pm	Sunday	9 am	Tues	6 pm	Wed -Saturday	10 am	<p>Liz Bloomfield: Editor, Treasurer, Adverts The Bloomfields, Nichols Corner, Church Meadow Lane, Alington, NR14 7NF Tel: 01508 493958</p> <p>Angie Yeomans: Adverts, Contributions, Page Layout and Design 15 Bramerton Lodge, Bramerton, NR14 7EQ. Tel: 01508 538131 (Answerphone)</p> <p>Kind donations may be sent to one of the addresses above either by cash or cheque payable to Eleven Says. Or BACS payment to Eleven Says 20-92-08 a/c 90137065.</p> <p>Contributions are welcome subject to the Board's discretion and available space. Deadline for all material ("copy") for the next issue is 5th MAY 2026 Email: elevensays22@gmail.com</p> <p>Produced by: Angie Yeomans Printed by: Roberts & Son Printers, 2-6 Bridge Street, Loddon, NORWICH. NR14 6EZ Tel: 01508 520221</p>
Times of Masses													
Saturday	6 pm												
Sunday	9 am												
Tues	6 pm												
Wed -Saturday	10 am												

NEXT ASSEMBLY: SATURDAY 30th MAY, BERGH APTON VILLAGE HALL, COOKE'S ROAD, NR15 1AA, 9 am - 11 am (approx)