



75p January 2026

# Connected

A large, three-dimensional sculpture made of quilted fabric letters, arranged in a pyramid shape. The letters spell out 'JOY FAITH GRACE KINDNESS HUMILITY MERCY WISDOM AT ST WILFRIDS IN 2026'. Each letter is made of multiple pieces of colorful, patterned fabric (quilted) and has a soft, padded appearance. The sculpture is set against a background of a church interior with stone walls and a wooden pulpit.

[www.StWilfridsParish.com](http://www.StWilfridsParish.com)

# Welcome

to the January 2026 edition of *Connected*.

Most of the articles this month came from Parish Pump, although I am indebted to Revd. Roy Shaw for the Dear Friends article. Thanks also to Jan Tetley for the update on the Gentle Movement group at St Francis, and to Mrs Clarke for taking the

trouble to check and embellish the text on VAT. Gripping Stuff!

Printed copies of *Connected* cost £5 a year, or you can pick up a single copy for 75p from any of the Churches mentioned within these pages. They will be collected by whoever delivers your copy of the magazine.

*Connected* may be downloaded

free from the *A Church Near You* websites.

Articles for *Connected* are always gratefully received, by the 11<sup>th</sup> of the month please.

**John Clarke** ✝  
01757 708646  
js\_clarke@btinternet.com

## Inside This Month

#TheParishThisMonth.....	3	Reflecting Faith .....	13
Dear Friends .....	6	As a New Year Begins .....	14
Songs of Praise @ St Francis.....	7	Methodist Clergy .....	15
Resolutions .....	7	From the Registers .....	15
VAT News.....	8	St Wilfrid's Clergy.....	16
From Strength to Strength .....	9	St Francis' Clergy .....	16
A Peaceful Mind.....	9	Service Roster .....	17
Prayer for the New Year.....	10	The Directory.....	18
Swaziland.....	11	St Wilfrid's Notices .....	20
Craft Group Thank You .....	11	St Francis' Notices .....	20
What's The Big Idea?.....	12	#TheParishThisMonth (Continued) .....	21

## Famous last words

- Step back a bit, I can't get you in the picture.
- Don't worry, it's not used any more.
- I thought it tasted rather strange.
- You have driven this before, haven't you?
- Of course the power is off!
- It's okay, I saw them do it on TV



#TheParishThisMonth

St Wilfrid's thanked Alana for the splendid work that she puts into providing teas and coffees for the faithful after the Sunday morning service.



RCS reinspected the church tower during December. Mrs Clarke was on hand to offer support to chief steeplejack Richard Brennan



The St Wilfrid's first aid team were awarded their certificates this month. So to avoid NHS queues, just pop along and see any of the above after any Sunday Service!

# Dear Friends

## Epiphany!

You probably know from tales of Greek mythology that gods and goddesses would often appear out of nowhere in ancient Greece to beguile or trick mortals. The word for this in everyday Greek was 'epiphany'; - the appearance or manifestation of a divine being on earth to humans. For Christians, Epiphany is the season after the 12 days of Christmas.

Our Epiphany Bible readings tell of the 'manifestation' of Jesus to a wider audience than those in the Christmas stories. We mark this in the first instance by placing the Wise Men in the crib scene; they have now arrived to see the consummation of their hopes and travels in the infant Jesus. And our Epiphany readings usually continue through the season with Jesus' baptism; John the Baptist's witness to Christ; Jesus' family attempting to take charge of Him because of His popularity with the crowds; and the Presentation in the Temple. In all these, something of divine glory is being made manifest.

In more common parlance today, an epiphany means a sudden or blinding realisation ('I had a sudden epiphany that John was going to marry Celia'). That modern meaning is helpful; 'Gosh, epiphanies can be part of our Christian experience!' Remember that occasion we were so conscious of God's love holding us? Or the time we knew the words we used to that stranger were infused with a grace we didn't know we had? These and similar experiences which we've probably all had can be seen as our epiphanies- a time when God was made manifest to



Bread and Wine: Newcastle Cathedral

us (and possibly through us) in a distinct way.

Have you ever thought of those sorts of experiences as an epiphany? Not ring-fenced to a particular time of year, but part of our everyday experience, as we seek to live out our baptism promises, and follow Jesus through the ups and downs, the humdrum and the extraordinary, the joys and sorrows of the everyday.

The promise and reality of Christmas is 'Emmanuel-God with us'. And the reality of Epiphany is that God IS with us,

in the everyday realisation of how great God is, how much God loves us, and how God pours upon us grace after grace after grace.

May we have many epiphanies in 2026, and may they all bring us closer to the God who has chosen in His love to reveal Himself to us.

**Rev. Roy Shaw** ✝

# Songs of Praise at St. Francis

On a chilly November Saturday afternoon, about 25 of us gathered in anticipation, cough sweets at the ready. Revd. Roy, with a list of our choices, introduced each with background information of the writers, and some of the circumstances in which they had been written, which was very interesting.

We started tentatively, but got into our stride with an eclectic selection. By the time we concluded with the great Wesley classic "And can it be...", we almost raised the roof!

Tea and cake afterwards was well earned, and much appreciated.

It was a joyful occasion.

Pat Ainger ✝



## Resolutions, Resolutions

We are full of good intentions at the start of each year. How come we usually fizzle out by February? Here are some tips to keep you going...

Be realistic. If you have several goals, don't attempt them all at once. Research has found that if you stagger your goals, you will have more success. So, for example, if this year you want to spend less money, do more exercise and spend more time with your family, start one change this month, another in February, and start the third in March.

Be specific. For example, don't tell yourself: Lose weight. Decide exactly how much you want to lose. When do you want to lose it by? How will you do it? If you want more time with your family, how and when will you do that? The more exact you can be, the

more likely you are to succeed.

Write it down. There's something about committing thoughts to paper that helps to cement your resolve. Why not start some sort of journal this year, to track your thoughts, your hopes, your goals – and your successes!

Tell other people. If you intend to do something, tell someone, and therefore you will feel more obliged to get going with it... your pride may keep you going when all else fails!

Focus on GAIN, not loss. Ever notice how many resolutions are about giving something up? Why not put it the other way round - instead of saying you will eat less, tell yourself you are headed for those skinny jeans...

Give yourself rewards. If you are quitting smoking or sweets, for example, put the money

that you would have spent in a jam jar, and treat yourself to something nice (and healthy) with it.

Break your resolution into steps. Some goals will take months to achieve. So, break each one down into tiny steps, and simply head for each step. Build in some time frames, to prevent you procrastinating.

Finally, don't let failure defeat you. You will make mistakes. But the secret is to simply get up again and to keep going. Only if you stop are you really defeated. None of us are perfect, and the Bible encourages us to always start again.

Parish Pump ✝



The Chancellor has been urged to retain a tax scheme for listed places of worship, as a survey, recently published, showed the majority of the UK population backs government support to help churches pay for repairs to their buildings.

A poll shows that two in five people, or 43 per cent of all adults, report having had contact with their local church. The majority of these, or 53 per cent, was for services and worship, but also 23 per cent – nearly seven million people in the UK – had contact for community support such as parent toddler groups, lunch clubs and food banks.

An estimated 2.8 million people – or four per cent of the UK population – have been in contact with their local church for a food bank. Church of England churches run or support 31,300 social action projects, including nearly 8,000 food banks, with emergency food provision and community cafés on the rise.

More than three quarters of the population – 77 per cent – said historic cathedrals and

churches are local and national treasures. And two in five – 41% – said they had visited a church or cathedral simply to find a quiet space for reflection or prayer, with this figure rising to 50 per cent amongst young adults in the 18 to 34 age range.

The survey conducted for the Church of England by Savanta, shows 59 per cent of the UK population agree that the Government should help with the costs of repairing and maintaining historic churches.

The Listed Places of Worship Grant scheme was first put in place by the then Chancellor Gordon Brown in 2001 and allows for VAT grants on repairs of more than £1,000 to be claimed for essential repairs and maintenance.

The future of the scheme is in doubt after the Department of Culture, Media & Sport (DCMS) announced an interim arrangement earlier this year with a reduction in the amount of money available from £42 million a year to £23 million and a cap of £25,000 per building. The scheme is due to come to an end in March 2026 and there

has been no confirmation from the Government on whether it will be renewed.

The Church of England is responsible for 45 per cent of the UK's Grade I listed buildings. More than 12,500 of its church buildings have listed status.

Current estimates show that around 260 churches and cathedrals have reported that their essential repair projects are at risk because of uncertainty over the scheme's future and big increases in costs as a result of the £25,000 limit on claims.

At St Wilfrid's (Grade I Listed) we make use of the scheme particularly for large repair projects.

The DCMS Commons select committee called in July for the scheme to be made permanent and the cap on claims to be lifted, after hearing evidence from the Church of England as part of its inquiry into built heritage.

**Parish Pump** 

# From Strength to Strength

Blessed are those whose strength is in you, whose hearts are set on pilgrimage. As they pass through the Valley of Baca, they make it a place of springs; the autumn rains also cover it with pools. They go from strength to strength, till each appears before God in Zion. (Psalm 84: 5-7)

January can be a grim month! Back to work after Christmas, dark days and early nights. Colds, sniffles and bugs, then the bills, renewals and invoices come in. There is not much going on in

church, as Candlemas is not until February.

I like the psalms, as they are written from personal experience. This one is a belter and has been called one of the sweetest psalms. I suppose January could be a type of 'valley of Baca' or veil of tears, meaning a difficult time to get through. The psalmist encourages us to look for wells and pools of water even in the driest desert.

Many people have debt or other problems. Perhaps the church could set up a group to

support members or look for local sources of advice, food banks or help.

January may be cold, costly and dark but there are things to look forward to: snowdrops, bulbs and days beginning to lengthen and at least the stress of Christmas is past!

**Parish Pump** ✝

---

## A Peaceful Mind

There is a lot of talk about 'mindfulness' these days, and how to find calm moments in our daily lives. Both the BBC and Classic FM have even got radio stations devoted to 'mindful' and 'calm' music. But as Christians, we have an extra, divine resource, to call on. And so this month we are launching a new series, simply offering three verses to help reassure your readers that they are not alone in their tough times.

The Bible tells the story of Jesus and His disciples in a boat. The wind blows, the waves rise, and the disciples are stressed. Like them, we also get hit by storms in life. Like them, we can't control what comes our way. But like them, we can know that Jesus is also with us.

Why not take a moment to ponder these promises:

1. In peace I will lie down and sleep, for You alone, Lord, make me dwell in safety. (Psalm 4:8)
2. The Lord gives strength to His people, the Lord blesses His people with peace. (Psalm 29:11)
3. For God is not a God of disorder but of peace - as in all the congregations of the Lord's people. (1 Corinthians 14:33)

**Parish Pump** ✝



# Prayer for the New Year

Dear Father, Lord of all time,  
Here we are! Another New Year!  
So many mixed emotions for different people, for different reasons. For some, the reluctance to leave a year which brought joy and happiness; for some the relief of leaving behind a difficult year; for some, sadness at moving into a year where a loved one has never been; for some, apprehension and insecurity about what might lie ahead in this world of polarisation, conflict and confusion about what is true.

Lord, help us to take time at the start of 2026 to refocus our hearts, minds and spirits – to tune into you, our un-changing God.

Help us to be calmed and encouraged by the promise of Jesus that He is the Way, the Truth and the Life. The safe Way. The ultimate Truth. The Life, your gift, to be with you for all eternity.

You promised never to leave us or forsake us. When we put our trust in you, through what Jesus did on the cross, we are secure, we are accompanied, no matter what the New Year brings.

We can go forward, safely.  
Thank you, in Jesus' name,  
Amen.

**Daphne Kitching**

# A Letter From Swaziland

## Overseas Mission

Each year we make an annual donation from Brayton PCC to one or more overseas missions. In December 2025 we sent the full amount to the Swaziland Schools Project.

This charity both supports children to attend school (secondary education is not free in Eswantini - previously known as Swaziland), and is involved in repairing and renovating school buildings and equipment.

Links between the charity and Brayton PCC date back to

the 1980s as the late Rev Ken Manners (priest in Brayton parish) was a friend of the late Rev John Dobson in Swaziland. A few of the current Brayton congregation still have the 'globe' donation containers and make annual gifts to the



Swaziland Schools Project. Extracts from the thank you letter are reproduced below and follow the website is [www.SwazilandSchooolsProject.org](http://www.SwazilandSchooolsProject.org).

For more information please contact Lis Middup (07770 440214) or Jill Clarke. We are hoping that Keith Fossey will visit Brayton and tell us more about the Swaziland Schools Project sometime in the coming months.

*Jill Clarke* ✝

"Dear Jill

I am writing on behalf of the Trustees of Swaziland Schools Projects (SSP) to thank the PCC for the amazing donation of £2500. It will be put towards the bursaries that pay for children to get a secondary education which includes uniform, food and transport if necessary.

The donation is very timely because 2025 has been a tough year for us in terms of fundraising – as I believe it has for many charities – so it will make a huge difference.

Liz and I will be going to Eswatini in March and, as usual, will be visiting a number of the students who are on the bursary scheme. They are all so grateful that people so far away are thinking of them and helping them to have a chance to escape poverty and stay healthy.

I hope that you have been reading some of the thank you letters that I receive from the students and which are published in the monthly newsletter.

Please pass on our grateful thanks to everyone on the PCC and beyond and may I wish you all a Happy Christmas and an amazing 2026!

Best wishes

Keith Fossey MBE  
(On behalf of the SSP  
UK Board)"

---

## Thank You

The Craft Group would like to thank everyone who supported them during the year at the Fairs or coffee mornings.

We raised over £1800 during the year.

If you would like to join us, we usually host our coffee

mornings in the Parish Hall on the second Saturday of the month - the next coffee morning will be on the 10<sup>th</sup> January, 10am to 11:30 am.

Our Craft Group meetings are held on the second Tuesday of the month in the Parish Hall

- the next meeting will be on 13<sup>th</sup> January 2pm to 4pm. You would be most welcome.

*June Whitehouse* ✝

# Song of Songs



The title of this book, 'Solomon's Song of Song' (1:1), claims to be written by Solomon, and while his name is mentioned seven times and several verses speak of the 'king', the book may be more about Solomon rather than written by him. However, it is reasonable to assume that Song of Songs was written in the tenth century BC, during Solomon's reign (971-931 BC).

The focus of the Song is God's choicest gifts of love and the voice of this love belongs to a woman, the beloved. It is her experience of love, both as the one who loves and as the one who is loved, that is most clearly expressed. The Song begins with her wish for her lover's kiss and ends with an invitation for intimate love. It describes the intimacies of married love as God intends it

to be. She speaks profoundly of love; of its beauty and delight; its exclusiveness (2:16); its spontaneity (2:7) and its overwhelming power: 'Place me like a seal over your heart, like a seal on your arm; for love is as strong as death, its jealousy unyielding as the grave. It burns like blazing fire, like a mighty flame. Many waters cannot quench love; rivers cannot wash it away.' (8:6,7)

God created man and woman, and established marriage as His purpose for society (Genesis 1:27; 2:20-24). This Song is part of the wisdom literature and shows us how to receive and live the gift of God's love with thanksgiving and celebration. However, the Song also speaks symbolically of the experience of intimacy to be found in our relationship

with Christ: 'My lover is mine and I am his...and his banner over me is love.' (2:16,4).

## **She[a]**

- 2 Let him kiss me with the kisses of his mouth – for your love is more delightful than wine.
- 3 Pleasing is the fragrance of your perfumes; your name is like perfume poured out. No wonder the young women love you!
- 4 Take me away with you – let us hurry! Let the king bring me into his chambers.

**Canon Paul Hardingham**



# Reflecting Faith: God's Acre

Have you ever considered the outside of a church building, and the gardens around it?

For many churches this will include a churchyard, though not necessarily. If your church does stand in a churchyard, then it may be what is known as a 'closed' one, meaning that burials and interments no longer take place other than within an existing family grave. An 'open' churchyard is one where burials and interments are still able to take place.

The maintenance for open churchyards is the responsibility of the church, whilst once closed (which, for Church of England churches, has to be agreed by Parliament) the maintenance is passed to the local or parish civil council. This is the case with St Wilfrid's.

These days, with the many financial cutbacks, Councils often try to refuse to take on a churchyard. But as it is a statutory obligation, they have no choice, and many will simply reduce the number of grass-cutting sessions to fit their slimmed budget.

Churchyards have not always looked as they do today, with memorial stones of varying shapes and sizes. Originally, they were simply left grassed and in towns this became one of the few green areas. People were buried there without any permanent marker being placed, nor any other official record of placement kept.

The thinking was that their life here on earth had ended and the person was now with God in heaven. Only those people in 'God's kingdom' would be allowed to be buried in the



St Wilfrid's Church 1901 from the Francis Frith collection

consecrated grounds, so anyone who had taken their own life, or unbaptised babies, would not be allowed.

Church buildings are usually built facing east - the place of the rising sun - and the people's entrance is on the south wall. This gives access to the churchyard from the south, and in European countries that means your first experience of entering the churchyard and the building is on its sunny side.

It was common practise to bury to the south of the church, as this was the lighter and warmer side. The richer and more influential folk would request to go as near to the altar - the Holy of Holies - as possible; even if that was outside the building itself.

Over the course of time folk wanted - and richer folk could afford - a marker for where their loved one lay. This idea of having a permanent marker

reflected the attitudes at the time, of visiting the place of rest specifically marked. Not just to know where to visit and even bring a picnic for the family on a good weather day, especially in working busy town areas; but also, to recognise the importance of their loved one's life.

**The Revd Dr Jo White**

## **This Month**

Try and visit a churchyard with very old memorials. Have a look at all the different materials, styles, wording and embellishments. What message do they give to you?

# As a New Year Begins

O Lord, our Father!...at the turn of the year... our hearts are filled with sombre thoughts... our ears are deafened by the voices of the radio and the newspapers, with their numerous predictions for the coming year. Instead we want to hear your word, your voice, your assurance, your guidance. We know that you are in our midst, and are eager to give us all that we need, whether we ask or not.

We ask for one thing only: that you collect our scattered thoughts, getting rid of the confused and defiant thoughts that may distract us, and thus enable us to concentrate on your limitless generosity to us. You were abundantly generous to us last year, and will be no less generous to us next year, and in every year to come. Fill us with gratitude to you.

**A prayer by Karl Barth (1886 – 1968). This most prominent Protestant theologian of his time spent much of his life resisting the Nazi movement, and so knew a thing or two about entering a New Year undaunted by troubles all around him.**

# From the Parish Registers

## Funerals

We offer our love and sympathy to the relatives of:

**12<sup>th</sup> December**

Stewart Geoffrey Stephenson (59)  
at St Wilfrid's

If you would like the church illuminated to celebrate a birth, baptism, birthday, marriage, anniversary, or the life of a loved one please contact Pat Griffiths on 01757 705793

## Church Floodlights

St Wilfrid's Church was, or will be, illuminated on:

**21<sup>st</sup> December**

In Loving Memory of Carole Doncaster Flannery

**22<sup>nd</sup> December**

In Loving Birthday Memories of Ronald Doncaster

**24<sup>th</sup> December**

In Loving Memory of Eric Chilvers (Senior)

In Loving Memory of Ellen Chilvers

In loving Memory of Eric Chilvers

In Loving Memory of Judith Chilvers

## Methodist Clergy

**Brayton and Burn Acting Superintendent Minister**

Rev. Ruth Gilson-Webb

[superintendent@gooleselebymethodist.org.uk](mailto:superintendent@gooleselebymethodist.org.uk)

(07305 350088)

**Life is too short for us to  
do everything we want to  
do; but it is long enough for  
us to do everything God  
wants us to do**

**Anon**

# St Wilfrid's, Clergy & Officers

## Clergy

Rev. Glyn Diggins      glyn.diggins@btinternet.com  
 Rev. Roy Shaw      revroyshaw@protonmail.com

## Reader

Jackie Jackman      porgles.pogs@icloud.com      (01757 706475)

## Church Warden (Currently Vacant)

Ruth Breeze point of contact      (01757 701911)

## Ministry Team

Mel Allan      (01757 706068)  
 Lynn Allan      (01757 706068)  
 Sue Beevers      (01757 229515)  
 Pat Griffiths      (01757 705793)  
 Joan Howden      (01757 700942)  
 Sheila Newsome      (01757 705497)  
 Carol Sowden      (01757 703590)

## Sacristan

Sheila Newsome      (01757 705497)

## Officers

### PCC Secretary

Ruth Breeze      (01757 701911)  
 ruthie5611@hotmail.com

### Treasurer

Jill Clarke      (01757 708646)

## Electoral Roll Officer

Margaret Seager      (07840 817005)

## Parish Safeguarding Representative

Linda Bunn      (07711 384003)

## Pastoral Care

Sue Beevers      (01757 229515)

## Craft Group

June Whitehouse      (01757 704331)

## Mothers Union

Lynn Allan      (01757 706068)

## Book Club

Rosalind Wilson      (01757 708856)

Registered Charity Number 1169956

# St Francis' Clergy & Officers

## Clergy, Thorpe Willoughby Methodist/Anglican Church

Rev. Glyn Diggins      glyn.diggins@btinternet.com  
 Rev. Roy Shaw      revroyshaw@protonmail.com

(The Rev. Roy Shaw has the Archbishop's permission to officiate and we are very grateful for his help in the parish)

## Reader

Jackie Jackman      (01757 706475)      porgles.pogs@icloud.com

## Officers

### ECC Secretary

Jan Tetley      (01757 707987)  
 tetleyjan@gmail.com

### Treasurer

Maggie Beal      (01757 703892)

### Electoral Roll Officer

Shirley Croft      (01757 707380)

### Child Protection Representative

Jan Tetley      (01757 707987)  
 tetleyjan@gmail.com

### Church Coordinator

Shirley Croft      (01757 707380)  
 Rosemary Finlinson      (07921 255988)

# Service Roster for January

## St Wilfrid's

**Sunday 4<sup>th</sup> January**

**Epiphany**

10:30am Morning Prayer

**Tuesday 6<sup>th</sup> January**

10:30am Holy Communion

**at Fernbank Court**

**Wednesday 7<sup>th</sup> January**

9:30am Holy Communion

**Sunday 11<sup>th</sup> January**

**Baptism of Christ**

10:30am Holy Communion

**Monday 12<sup>th</sup> January**

10:30am Holy Communion

**at St Wilfrid's Court**

**Wednesday 14<sup>th</sup> January**

9:30am Holy Communion

**Sunday 18<sup>th</sup> January**

**Second Sunday of Epiphany**

10:30am Joint Celtic Holy

Communion **at St Francis**

**Wednesday 21<sup>st</sup> January**

9:30am Holy Communion

**Sunday 25<sup>th</sup> January**

**The Conversion of Paul**

10:30am Churches Together Service

**in Selby Abbey**

**Wednesday 28<sup>th</sup> January**

9:30am Holy Communion

## St Francis

**Thursday 1<sup>st</sup> January**

**No Service**

**Sunday 4<sup>th</sup> January**

**Epiphany**

10:30am Holy Communion

**Thursday 8<sup>th</sup> January**

10am Holy Communion

**Sunday 11<sup>th</sup> January**

**Baptism of Christ**

10:30am Methodist led Holy  
Communion

**Thursday 15<sup>th</sup> January**

10am Holy Communion

**Sunday 18<sup>th</sup> January**

**Second Sunday of Epiphany**

10:30am Joint Celtic Holy

Communion **at St Francis**

**Thursday 22<sup>nd</sup> January**

10am Holy Communion

**Sunday 25<sup>th</sup> January**

**The Conversion of Paul**

10:30am Churches Together

Service **in Selby Abbey**

**Thursday 29<sup>th</sup> January**

10am Holy Communion

## Methodists

**Brayton**

**Sunday 4<sup>th</sup> January**

10:30am Morning Worship

**Sunday 11<sup>th</sup> January**

10:30am United Covenant

Service with Burn and

Hambleton

**Sunday 18<sup>th</sup> January**

10:30am United Service at Burn

**Wednesday 25<sup>th</sup> January**

10:30am Week of Prayer for

Christian Unity at Selby Abbey

**Burn**

**Sunday 4<sup>th</sup> January**

10:30am Morning Worship

**Sunday 11<sup>th</sup> January**

10:30am United Covenant

Service at Brayton

**Sunday 18<sup>th</sup> January**

10:30am United Service with

Brayton and Hambleton

**Wednesday 25<sup>th</sup> January**

10:30am United Service at

Hambleton

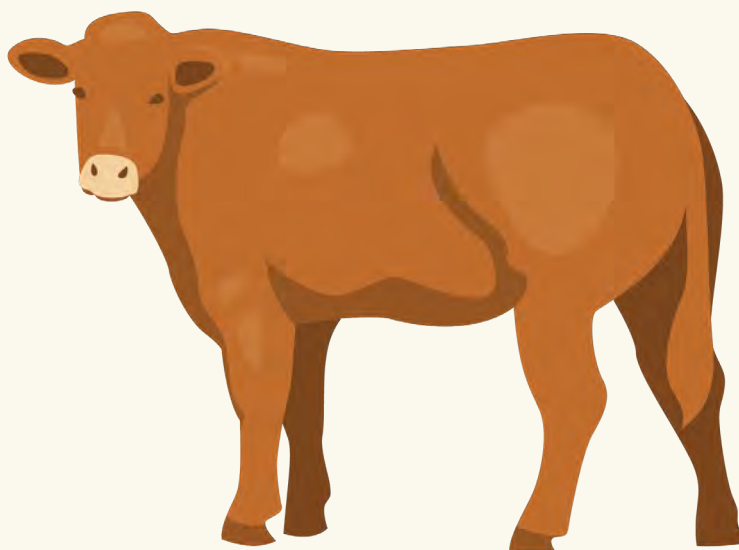
**Thorpe Willoughby**

**Sunday 11<sup>th</sup> January**

10:30am Holy Communion

**Thursday 29<sup>th</sup> January**

10am Holy Communion



# The Directory

## Tea Up!

### Coffee Corner

**Saturday 3<sup>rd</sup> January**  
**10am - 11:15am**  
**St Francis Church**

Have a lovely sociable New Year catch-up with friends old & new.  
**Pat**

### Community Lunch

**Wednesday 4<sup>th</sup> February**  
**12noon-1:30pm**  
**St Wilfrid's Parish Hall**

No Community Lunch in January.  
A simple lunch of soup and dessert **with custard** for only £5  
**Pat**

### Craft Group Coffee Morning

**Saturday 10<sup>th</sup> January**  
**10am - 11:30pm**  
**St Wilfrid's Parish Hall**

A very happy new year with good company, coffee and cakes. We hope to see you there! **June**

### Coffeemates

**Wednesday 28<sup>th</sup> January**  
**10am - 12noon**  
**St Wilfrid's Parish Hall**

Join us for tea, coffee and fantastic homemade cakes! **Lynn**

### Coffee for All

**Every Tuesday**  
**10am-11:30am**  
**St Francis Church**

Come along for coffee, tea and a chat. Everyone is welcome.  
**Pauline**

## Wellbeing

### Soup and a Song

**Friday 30<sup>th</sup> January**  
**10:30am-1pm**  
**St Francis Church**

Memory letting you down? Caring for someone with memory problems? Lonely or know someone who is? Enjoy a good sing-song? Join our happy group for an hour of song & fun, then share a meal of soup, butties and cake. 07921255988. **Rosemary**

### Churchyard Tidying

**Saturday 31<sup>st</sup> January**  
**9:30am-12noon**  
**St Wilfrid's Churchyard**

Come and help maintain the flower borders, cut back the brambles, and empty the rubbish bins! Live the dream! **John**



# Crafty Folks

## St Wilfrid's Craft Group

**Tuesday 13<sup>th</sup> January**  
**2pm–4pm**  
**St Wilfrid's Parish Hall**

Everyone welcome, come along for good company and a cuppa. You may learn a new craft! **June**

## St Wilfrid's Stitchers Group

**Monday 26<sup>th</sup> January**  
**1:30pm**  
**St Wilfrid's Parish Hall**

We meet on the last Monday in the month. We enjoy any type of sewing, cross stitch, and embroidery of any kind, as well as patchwork. All welcome, further details from 01757 705793. **Pat**

## St Francis Crafters

**Every Wednesday**  
**2pm-4pm**  
**St Francis Church**

We meet every Wednesday to knit, sew, crochet, craft and natter. Everyone is welcome! Or come along if you just want to chat! Contact me for more information on 01757 703892. **Margaret**

# Women Matters

## Mothers' Union

**Thursday 8<sup>th</sup> January**  
**From 2pm**  
**St Wilfrid's Parish Hall**

This month we are all excited for our AGM, the collection of subscriptions, and finding out about the programme for the year ahead. **Jill**

## Brayton WI

**Monday 12<sup>th</sup> January**  
**From 2pm**  
**St Wilfrid's Parish Hall**

This month we are having a Beetle Drive! Jean 07840 750844 for more information. **Jean**

## Thorpe WI

**Thursday 8<sup>th</sup> January**  
**7:30pm**  
**St Francis' Church**

This month we are also having a Beetle Drive!. **Jan**

# Camera, Action! Services

## Cake, Coffee, Movie

**Friday 16<sup>th</sup> January**  
**10am - 12noon**  
**St Francis Church**

We encourage people to come along and socialise over coffee & cake. Doors open at 10am with lots of refreshments followed by the film starting at 10.30am. **Jan**

## Headstart

**Mondays in Term Time**  
**9:30am - 11am**  
**St Wilfrid's Parish Hall**

Headstart Baby and Toddler Group, Mondays in term time in the church hall, 9.30 - 11am. Voluntary contribution. **Martin**



# St Wilfrid's Notices

## **Brayton Parish Council**

Our grateful thanks go to Brayton Parish Council for their generous grant of £880 towards the floodlights in the churchyard at St Wilfrid's. This will be used for both the maintenance of the lights and energy usage over the Christmas and Easter festivals.

**Jill Clarke**

## **Generous Giving**

Following Reverend Glyn's sermon about generosity on the first Sunday of Advent, I have registered St Wilfrid's with the Parish Giving Scheme and our parish code is 430643139.

Thank you to the ten or so households who have already completed direct debit forms and increased their monthly giving. Your first gifts will be received in February so please don't forget to cancel any existing standing order to St Wilfrid's once the January donation has been made.

Further details about the Parish Giving Scheme can be found at <https://www.parishgiving.org.uk/> I have also printed copies of the forms for setting up a direct debit. As stated in the literature the main benefits are "Through regular donations, your generosity enriches the life of your church in your community. The Parish Giving Scheme is in place to support this ministry of giving, safely and simply. Gifts made through this scheme use a Direct Debit. With your permission, we are able to reclaim the Gift Aid for your church. It is also easy to protect your donation from inflation if you choose; we will calculate the difference and notify you each year in advance, to ask if you are happy to increase your gift by the cost of living."

Please speak to me if you want more information including other ways to give.

Thank you also to those who have made one-off donations to support St Wilfrid's - at least £800 extra was received in November/December.

**Jill Clarke**

Treasurer, Brayton PCC

[Treasurer@stwilfridsparish.com](mailto:Treasurer@stwilfridsparish.com)

# St Francis' Notices

## **Coffee, Cake and Movie @ St Francis**

3<sup>rd</sup> Friday in each month: next showing 16<sup>th</sup> January 2026. Doors open at 10am with lots of refreshments followed by the film starting at 10.30am. We encourage people to come along and socialise over coffee & cake. Contact me on (01757) 707987, or [tetleyjan@gmail.com](mailto:tetleyjan@gmail.com) for more details.

**Jan Tetley**

## #TheParishThisMonth (Continued)



Thank you to Jan Tetley for these pictures of the Gentle Movement Christmas Lunch

at the Fox. I do hope that the lunch was **after** the class, rather than **instead** of

the exercises!

**John Clarke** ✝

# A SLIDE SHOW FOR MACMILLAN CANCER CARE

2000 FLORAL ART EXHIBITS IN GLOUCESTER  
CATHEDRAL: NATIONAL ASSOCIATION FLOWER  
ARRANGERS NATIONAL COMPETITIONS 2025



15TH JANUARY 2026, 1pm - DOORS 12.30pm  
ADMISSION £3 INCL. LIGHT REFRESHMENTS: RAFFLE  
ST FRANCIS CHURCH, THORPE WILLOUGHBY, YO8 9NH

# Community Lunch!



Wednesday 4th February  
12noon to 1:30pm in the  
Parish Hall. Enjoy good  
company plus soup and  
dessert for only £5

CÔME AĽONG TO

C MATES F F F E E

WEDNESDAY 28TH JANUARY

FROM 10AM TILL 12NŌŌN

IN ST WÍLFŘID'S PÂRISH HALL,

CÔFFĒE, CĂKE &  
GRÈAT COMPANÝ!



STARTING 3<sup>RD</sup> OF  
NOVEMBER

**EVERY MONDAY**

TERM TIME ONLY

**YOU ARE INVITED TO OUR**

# **HEADSTART PARENT/CARERS BABY AND TODDLER GROUP**

**IN PARTNERSHIP WITH ST WILFRID'S CHURCH**

**9:30AM - 11AM**

£3 VOLUNTARY  
PAYMENT VIA CARD

**REFRESHMENTS AVAILABLE**

**BABY SCALES  
AVAILABLE FOR  
WEEKLY WEIGH INS**



Located in the Parish Hall  
behind St Wilfrid's Church

**ST WILFRID'S CHURCH  
BRAYTON, YO89HE**

PARKING AVAILABLE BEHIND THE CHURCH