

Final Issue

The Mid-Elloe Villager



exploring the opportunities within

**DECEMBER
2025**

**JANUARY
2026**

"We extend our best wishes to **SUTTON ELLOE NEWS** for every success in the future, and trust they will enjoy the same support and goodwill that we have been fortunate to receive."

Parish and Community Contacts

Rural Dean - Revd. Carolyn Bailey - 01788 217366

Ness.rector@gmail.com

Parish Priest - Rev. Paul Carey-Slater— 01406 478523

rev.paulcareyslater@yahoo.com

Focal Minister - David Smith — 01406363388

tay58@btinternet.com

Y&CW - Micki Carey-Slater - 07935 380880

micki.carey-slater@lincoln.anglican.org

Deanery Administrator - Caz Dennis - 01406 423460

eedeanery@lincoln.anglican.org

Church Wardens:

St Mary Magdalene, Fleet

Vacant (Please Contact Rev. Paul Carey-Slater)

St Mary Magdalene, Gedney

Jill Duffey - 01406 365586 jillduffey@argonet.co.uk

William Webb - 01406 363673 janeandwilliamwebb@hotmail.com

St Lukes, Holbeach Hurn

Church Contact - Kay Jenkinson 01406 424428

St Marks, Holbeach St Marks

Neil Sturgeon - neilk.sturg@yahoo.co.uk

Parish Safeguarding Officers: Gedney

David Smith

01406 363388 tay58@btinternet.com

Fleet Rev. Paul Carey-Slater— 01406 478523

rev.paulcareyslater@yahoo.com

Holbeach Hurn Jane Thompson

01406 423934 grove@gtfarms.co.uk



From the Editor

A Fond Farewell

As the editor of *The Mid-Elloe Villager*, it is with a mix of warmth and genuine emotion that I write to you in this, our final issue.

For many wonderful years, this magazine has been more than just pages it's been the heartbeat of our community, a shared space for stories, achievements, laughter, and reflection.

Putting together each issue has been a true privilege. I've been incredibly proud to showcase the talent, generosity, and spirit that makes our community so special.

Thank you to every writer, photographer, and contributor who filled these pages with life.

Thank you to our local businesses and sponsors for their unwavering support.

Most of all, thank you to you, our dedicated reader. Your feedback, enthusiasm, and willingness to share your own lives have been the fuel that kept us going.

I will miss the anticipation of putting the next issue together, the thrill of uncovering a great local story, and the joy of seeing the magazine on your kitchen tables and in local shops.

While this chapter is closing, the connections we've forged will last. The history we've documented and the friendships we've enabled through these pages are a lasting legacy.

I wish you all the very best, and I look forward to seeing the wonderful things our community continues to do.

With sincere thanks and a heartfelt goodbye,

Christine

Magazine Editor Christine Marchant

Copy for the magazine should be with Christine by 18th of the previous month, marked Mid Elloe Magazine

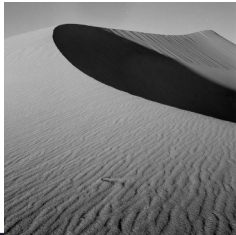
Advertising and Items for Magazine Contact Details



midelloevillager@outlook.com



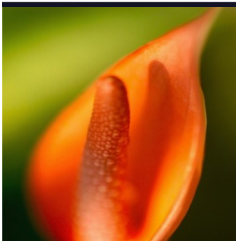
07788712121



For all enquiries about Baptisms, Weddings and Funerals please contact the Deanery Administrator, Caz Dennis, on 01406 423460 (office hours Mon- Thurs 9.00-1.00)

For urgent pastoral issues please contact the Rural Dean

For all other enquiries please contact the churchwardens - details are in the Mid Elloe Community magazine.



SEE US ON THE WEB

The Magazine and details of services will be put on the new church website every month so please do check there for details of what is going on in your Parish and in the Benefice.

Fleet: www.achurchnearyou.com/church/14562/

Gedney: www.achurchnearyou.com/church/14564/

Holbeach Hurn: www.achurchnearyou.com/church/14569/

Holbeach St Marks: www.achurchnearyou.com/church/14564/



MORRISS & HAYNES

FUNERAL SERVICES

HOLBEACH

PRIVATELY OWNED AND MANAGED

Offering 24 hour personal service

Private chapel of rest

Floral tributes

Catering

Stationery

Monumental masons

Golden charter pre-paid funeral plans available

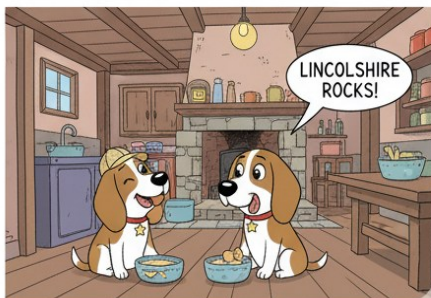
34 FLEET STREET, HOLBEACH

SPALDING. PE12 7AF

TELEPHONE 01406 425 225



TIGGY AND STORM IN LINCOLNSHIRE FOR THE DAY



Have you ever thought about Bell Ringing?

Contact John Bennett on 07563756186

We ring at Gedney St. Mary Magdalene Church
and

Sutton St. James Parish Church

On Alternate Tuesday evenings from 7pm to 9pm

Or just turn up and have a try



Ring the changes

Bell ringing: a great tradition

New skills, new friends,
new places, all ages

Join the band!

Bell Details

Ringling Times

Contact

Find Out More

Mail: edmund@uk.bellringing.org
Email: john.bennett@groundswell.org.uk

- ✓ The comprehensive advice for all ages (children and adults)
- ✓ The essential handbook for finding material (methodology, call for change)
- ✓ The all Bellringing and more (with the help of our members)



Part 2: The Scent of the Solution

Gedney left the butcher's shop, walking a deliberate, measured path along the High Street. He ignored the raised eyebrows of the villagers, who were unaccustomed to seeing the Inspector sniffing the pavement with such intensity.

"Find the thread, Gedney, find the thread," he muttered to himself, tracing a mental line from the dark hair, through the faint scent of sage, and down to the *thwumping* sound.

He ended up at the cottage of Mrs. Plummatt. She was indeed making jam, her kitchen cloaked in a sugary-sweet fog.

"Inspector Gedney! Come in, come in! I'm just bottling the rhubarb. Did you want a jar?"

"Later, Mrs. Plummatt, later. I'm on a sausage trail. Tell me about your jam-making yesterday evening, specifically around six o'clock. Did you hear anything unusual?"

Mrs. Plummatt paused, a glistening spoon hovering near her mouth.

"Unusual? Well, yes! My darling **Baron von Barkenstein** was quite agitated. He kept barking at the back of the coal shed, which is odd, as he usually saves his outrage for the postman."

Gedney's eyebrows nearly vanished into his hairline. "Baron... von Barkenstein? Would he happen to be a dog of considerable size and dark hair, by any chance?"

"He's an enormous, fluffy black Newfoundland, Inspector. A gentle giant! Though... he was oddly *quiet* this morning. Just whimpering near the coal shed."

"The coal shed!" Gedney exclaimed. "The *thwumping*!"

He dashed out to the small, wooden shed. The door, usually latched, was slightly ajar. Inside, among the coal dust and gardening implements, was a large, black dog, staring mournfully at a pile of scattered straw.

But the dog wasn't the culprit.

Lying next to the straw, looking utterly defeated, was **Mr. Peter Plankton**, the butcher's apprentice, covered head-to-toe in coal dust and tiny fragments of dried herbs.

And beside him? A large, empty canvas sack, which, upon closer inspection, bore the faint inscription: "*B. Grimsby - Cumberland Sausages - DO NOT DROP.*"

Gedney crossed his arms. "Mr. Plankton. Perhaps you could explain why a whole coil of Cumberland Sausages was last seen disappearing into a coal shed on the head of a very large dog?"

Plankton sighed, the coal dust puffing off him in a sad, grey cloud. "It was the *bet*, Inspector! Young Timmy down at the bakery dared me. Said I couldn't steal the sausages and smuggle them out of town without Grimsby knowing."

"And the dog?"

"I was going to use the sack," Plankton mumbled. "But when I got to the back door, the Baron was there, wagging. I thought I could slip the sack past him. But he thought it was a **game**."

He looked down at Plankton, shaking his head. "Mr. Plankton, next time you feel the need for a dare, I suggest you stick to rearranging the jars of pickled onions. It's far less fragrant. Now, if you'll excuse me, I believe Mrs. Plummett promised me a jar of rhubarb jam. I've developed quite an appetite."

Gedney massaged his temples. "The muffled *thwumping* was you trying to wrestle twenty pounds of pork product out of the jaws of a Newfoundland, wasn't it?"

"Yes, Inspector. The Baron thought the whole sack was a chew toy. He yanked it, I fell into the coal pile, and the whole coil—" Plankton gestured vaguely— "just kind of... *sprang* out and landed on the Baron's head. He ran off into the night with the entire circumference of the county's finest sausage coil for a collar."

Gedney pulled out his notebook one last time. *Case Closed: Apprentice's Hubris / Dog's Playfulness. Sausages recovered, mostly uneaten, three streets over, near the bandstand.*

SAFEGUARDING IN THE MID ELLOE GROUP

If you are concerned that someone you know is at risk of, or is being abused, or presents a risk to others, please seek advice from one of our Safeguarding Officers or if necessary report the matter to the Local Authority Social Services Care Services or the Police without delay

St Mary Magdalene, Gedney – David Smith

01406 363388 – tay58@btinternet.com

St Luke's, Holbeach Hurn – Jane Thompson

01406 423934 – grove@gtfarms.co.uk

If There Is IMMEDIATE RISK or DANGER please contact the Police on 999

Safeguarding is the responsibility of everyone who participates in the life of our churches!

(The Last) Belfry News

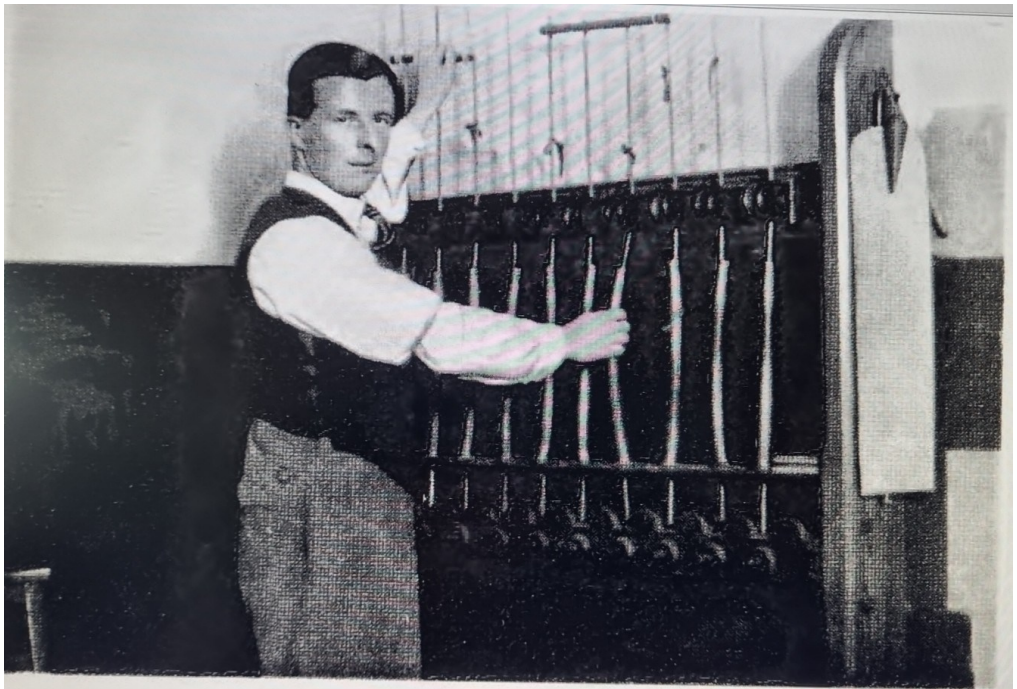
The Ellacombe Chiming Apparatus

I have occasionally mentioned these devices but what were they, how were they used and who invented them? Well, they comprised a set of cords and pulleys connected to auxiliary hammers which allowed one person to chime (not ring) all bells in a church tower. Invented in 1821 they were the brain-child of Reverend H T Ellacombe , 1790 to 1885, Rector of Bitton, Gloucs from 1817 to 1850. A very devout man the behaviour of the ringers in Bitton Tower appalled his theological beliefs and feelings. He tells us, “ they were considered respectable honest men in their way” but then continues; “practices in a country belfry had better be passed over in silence for such things I have seen and heard would hardly be tolerated in a village alehouse. A more drunken set of fellows could not be found.” He goes on to recount how the ringers tended to hang about in the churchyard during the service and then ring “ a merry peal” afterwards. Oh dear!

Closer to home James R Jerram in the late 1800’s installed Ellacombes at Fleet, Long Sutton, *Newton-in-the -Isle and Tydd St Mary. Those at Fleet and Long Sutton have long gone, but that at Newton is intact while at Tydd, a dismantled clavier remains in the ringing room, though whether this is the original I’m not sure . Of interest, the Tydd installation (I believe around 1875 or thereabouts) was put there because their ringers were in the habit of “taking beer into the ringing room and the Rector rightly objected”-or so we are informed by North in his 1882 “Bells of Lincolnshire.”

I only heard one Ellacombe expertly used and this was at St John-the-Divine, Leicester, shown on the accompanying photograph. In my youth Sydney Harrison was Tower Captain at St Johns and he was a master on the Ellacombe, chiming a variety of tunes, both hymns and secular, all without music and completely by ear, never any mistakes. Occasionally after Wednesday evening practice he would give us a short recital, always most enjoyable and entertaining. The Easter hymn “Christ Our Lord is risen today”, I particularly recall, Sydneys arms and elboes working away at the clavier, St Johns bells singing out above, melody with accompanying chords. Those days have gone as St Johns is now a block of flats and its bells transferred to Peterborough Cathedral where a few years ago I had the pleasure of once more ringing them. As for Rev Ellacombe, I quote a few lines from his 1849 publication,- “Advice for Ringers.” He says , “Eyes Open, Eyes Wide, Feet Steady, Tongue Tied” Good advice fellow ringers? I will leave that to your individual opinions. John Bennett

*“Not strictly an Ellacombe but rather, I think, of French design but installed by Jerra



Chiming at St. John-the-Divine, Leicester. (Mr Sidney Harrison)

Although sometimes short of ringers we have during the past year managed to ring for most Sunday services at Gedney and Sutton St James. There were weddings on March 28 and June 4 both requesting bells and on June 4, a beautiful sunny day, our outing, organised by Janet, to Fentanton, Willingham, Over and Longstanton. Meanwhile we look forward to our annual Christmas Dinner on December 16th at The Anchor, Sutton Bridge.

My sincere thanks to Angela, Christine, Janice, Jane, Janet, Phil, Malcolm and Terry for their support and encouragement during 2025.

John Bennett

The Origen of the Word Hill

We thank Joan Woolard for this update

Dear Editor, this may be too late for the November issue but maybe can be used later. The word 'hill' refers to salt-erns which were the waste from saltmaking. This was the biggest industry for many years in very ancient times and the foundation of great wealth, salt being essential for life itself. Roman soldiers were paid in salt, hence the word 'salary' and other linked words. Salterns are mentioned in the Domesday Book. This region was rich in salt with all the many creeks and gullies running inland from the sea. Fleet became the centre of the local salt industry and the richest vill. But evaporating salt from the seawater meant burning fuel and stripping off turf and anything burnable from the soil. In time this led to actual turf wars with rival groups battling for their rights to burn. In 1189 several local lords assembled in the Prior of Weston's barn before attacking Crowland, cutting down trees and digging turves. When the fens were drained and sheep introduced as an alternative and very lucrative income, the demand for salt declined although there was a saltern recorded near Holbeach as late as the 19th century.

Tenants paid rent for a 'hoga et area' or 'hill and yard' to process salt. This is well documented in 'A Terrier of Fleet' written by an American professor who spent summer vacations at the British Museum studying ancient records. Several books have been written on the subject, one of the best by Hallam: 'Saltmaking in the Lincolnshire Fens'. References can be found in 'A description of Fleet' on the Fleet Parish Council website.

Joan Woolard



The Lawns & Lakes Camping Site

Camping and Caravanning Site

Lowgate, Fleet, PE12 8LN

Come and Join us for the Best Sunday Lunch, now with Licensed Bar – Table Service – Choice of Meats & Vegetables – using local ingredients all food is prepared on site from crop to plate – Please call on 07810026107 to reserve a table



We very much look forward to welcoming you to our warm and friendly atmosphere



CHURCH SERVICES AT GEDNEY

The services at Gedney Church for December/January and February will be as per the table below. The second and fourth Sundays will be Communion Services with Morning Prayer on the third Sunday led by David Smith.

Sunday 14th December – Advent 3 – 11.00 – Communion Service.

Sunday 21st December – Advent 4 – 6.30 pm – Candlelit Carol Service.

Sunday 28th December – Christmas 1 – 11.00 Communion Service.

Sunday 11th January – Baptism of Christ – 11.00 – Communion Service

Sunday 18th January – Epiphany 2 – 11.00 – Morning Prayer

Sunday 25th January – Epiphany 3 – 11.00 – Communion Service

Sunday 8th February – 2nd before Lent – 11.00 – Communion Service

Sunday 15th February – 1st before Lent – 11.00 – Morning Prayer

Wednesday 18th February – Ash Wednesday – Details yet to be announced

Sunday 22nd February – Lent 1 – 11.00 – Communion Service

Church continues to be open every day for private prayer. If you would like to be included with those who receive the pew sheet electronically then please send an email to janeandwilliamwebb@hotmail.com

GEDNEY HARVEST FESTIVAL CELEBRATIONS

Harvest Festival was celebrated at **Gedney Church on Sunday 5th October**. Around 56 diners tucked into Harvest fare with a sumptuous array of puddings. Thank you to everyone who helped in the preparations, flower arrangers, cooks and those kind souls who 'mucked in' to make it such an enjoyable evening. Many favourable comments were received.



COFFEE MORNINGS AT CHURCH

The Coffee Mornings at Church continue to be popular. The next dates are
**Thursdays 4th and 18th December,
15th January, 5th and 19th February.**

TABLETALK LUNCHES

Tabletalk Lunch in November saw almost thirty diners tuck into 'bangers and mash' served with vegetables followed by apple crumble.

The next date is **Wednesday 10th December** which will be the Christmas meal. The date for **January is Wednesday 14th** at the usual time. Please contact either Jane or Jill if you would like to be included.

You can contact us either by phone or email on:-

Jane Webb – 01406 363673 janeandwilliamwebb@hotmail.com J

Jill Duffey – 01406 365586 jillduffey@argonet.co.uk

REETING CARDS

Our organist, Peter Graper, very generously makes greeting cards for Fleet and Gedney Churches to sell to raise funds. There is a good selection of cards available. The cards are on display inside the respective churches. It is well worth a look! Peter is always keen to transform cards which you have received and unwanted cards can be left at the back of either Fleet or Gedney Churches. Thank you Peter.



ALL SOULS SERVICE – SUNDAY 2ND NOVEMBER AT 4PM AT GEDNEY CHURCH

Every year at All Souls Tide we have a service where we remember those of our loved ones who have gone before us. The names of all whose funerals have been held in the last year will be read out. There will be an opportunity to light a candle in their memory.

Other names can be commemorated by signing the list in Church or writing the name clearly on a piece of paper and handing it in at the beginning of the service. All are most welcome.

Please note the earlier start time of this service as last year which proved popular.

ALL SOULS SERVICE – SUNDAY 2ND NOVEMBER

This service has become a regular event in the Church calendar and many families came together to remember loved ones who are no longer with us. Candles were lit to remember the bereaved and packets of bulbs were given out as a sign of hope and new life. A sincere 'Thank You' to Adam Taylor and Taylors for donating the bulbs to Gedney Church for this service.

CRAFT AND GIFT FAIR – SATURDAY 15TH NOVEMBER

The Craft and Gift Fair was a huge success. Church quickly filled with people and the stall holders saw a steady stream of customers. The team serving refreshments were kept extremely busy. Church also held a Cake Stall, a Gift Stall and a Tombola Stall. Flowers were also sold with the proceeds going to church funds. Many people were involved in the planning and running of this very successful day and they are all to be congratulated and thanked for their sterling efforts which raised the grand sum of £2,900.00. A truly wonderful achievement! We do appreciate the support of both the stall holders and visitors.

REMEMBRANCE SUNDAY 9TH NOVEMBER 10.50

Our Annual Service of Remembrance started at 10.50 when we remembered all who had been lost in conflict. The names from the memorial were read before the two minute silence. Our organist, Peter Graper, kindly played both Last Post and Reveille. The congregation then returned to their seats and the service continued as usual.

Tuesday 11th November saw the older children from the school come into Church before visiting the war grave in the churchyard and laying a wreath.

CANDLELIT CAROL SERVICE – SUNDAY 21ST DECEMBER – 6.30 PM

The Gedney Candlelit Carol Service will take place on Sunday 21st December at 6.30 pm. Let's hope the weather is kind. Once inside hundreds of flickering candles will give the interior of the church a very special atmosphere.

This is an extremely popular service in our calendar at Gedney and we do look forward to you being able to join us and start your Christmas celebrations in a very special way. There will be an opportunity at the end of the service to light a candle to remember loved ones no longer with us. Refreshments will be served after the service.

GEDNEY CHURCH CHRISTMAS CARDS

As mentioned in previous years, packs of Christmas cards showing Gedney Church are available. The picture is a new photo taken during the Carol Service. The cards come in two sizes in packs of either 5 or 10. Please bear this in mind as the nights pull in and thoughts turn to the Festive Season. Please contact me on 01406 363673 if you would like more details or to see a sample. Jane Webb

Gedney Church End Primary Academy

At Gedney Church End Primary Academy, we would like to extend our thanks to the church for the continued connections and support shown throughout our first term of the academic year.

Harvest Festival

This term, we celebrated our Harvest Festival at the church, and what a wonderful event it was! Families joined us in great numbers to enjoy performances, songs, and readings from our learners. Together, the school community shared the joy of harvest, exploring how it is celebrated around the world through the lens of our class names (Japan, Egypt and Iceland). The atmosphere was full of warmth, pride, and gratitude



Remembrance

On Tuesday 11th November, our Year 5/6 learners had the privilege of visiting the church to mark Remembrance Day. They took part in thoughtful discussions about the significance of Remembrance and the wars and visited the memorial grave where they laid a wreath to pay their respects. We are especially grateful to Mr and Mrs Webb for kindly leading this meaningful experience.



Looking Ahead

As we move towards the end of term, we are excited to celebrate with our end-of-term Christmas Service, which will include traditional Christingle making with the church warden, as well as our much-anticipated nativity.

GEDNEY PCC

On behalf of all members of the Parochial Church Council we should like to thank everyone for their continued support of Gedney Church throughout 2025. We take this opportunity to wish you all a very Happy Christmas and a Peaceful New Year.

Jill Duffey and William Webb

TRAVELLING NATIVITIES

Towards the end of November the Travelling Nativity Sets will begin their journey around the village.

Families may borrow one of the sets, which will be based at Gedney School, to explain the Nativity to their children. Each consists of a set of knitted figures and reading material for parents to share with the youngsters. Children use the figures to act out the Christmas story.

A group of ladies in the village knitted the figures a few years ago and they were a huge success. There is a small comments booklet so that anyone who wishes may add a few remarks before passing the set on.

If your family would like to have a travelling nativity set for a couple of days in the run-up to Christmas then please ring Jane Webb on 01406 363673. Hopefully each set will complete its round a few days before Christmas. If you know of any families who do not receive this magazine but would like to be included then please pass the information on.

CHRISTMAS WREATHS AND FLORAL TRIBUTES

The Parochial Church Council would remind you that Christmas wreaths and floral tributes should be removed from the Churchyard by Candlemas which is February 2nd. This marks the end of the Christmas Season in the Church's calendar.

Thank you for your help in this matter.

We also appreciate the input of all contributors to this magazine since its inception.

William and Jill, Gedney Churchwardens

AND FINALLY:-

This December/January edition of the Mid Elloe Villager will be the last in its current form.

We are sure you will know that since September our parishes have been re-grouped as part of the Diocese's 'Time To Change Together' initiative and I must sincerely apologise for omitting Holbeach Hurn and Holbeach St Marks in an earlier explanation in this magazine.

Gedney is now part of the Sutton Elloe group of parishes, along with Long Sutton, Lutton and Dawsmere, and the existing Long Sutton magazine will from February be given a new title and incorporate Gedney news and information under a new editor and a slightly different format.

We, in Gedney, offer our sincere thanks to the retiring editorial team of Christine and Laurence Marchant for their patience and extremely hard work, not to mention their superior IT skills.

OPPORTUNITIES TO SOCIALISE

Here-4-U meets every first and last Monday Holbeach to the United Services Club on Church Street. The club's chief focus is Dementia Care but anyone at risk of mental illness through isolation or injury is welcome.

Sadly a similar group at Long Sutton Outreach closed due to circumstances - and dogs - beyond control. If anyone feels they could run the club which offered relaxation and friendly company for carers, especially dementia care, please call Joan Woolard on 01406 426508. Dementia is truly a modern scourge.

Sutton Elloe News Email contact details are

Susan Benfell

Email : Susan.Benfell@ls.keystonemat.org

Geoff Palmer

Email : geoff@gpalmer.myzen.co.uk



50/50 CLUB FLEET CHURCH WINNERS

OCTOBER

£30 Jane King

£20 Hiary Edwards

We do hope that many people from the Parish and friends of Fleet Church from far and wide will wish to join the 50/50 Club for 2026. Details will follow in the November and December magazines. Each £10 ticket will help us to ensure our beautiful church building can survive and that services can continue on a fairly regular basis.

SERVICES AT ST MARY MAGDALENE CHURCH

December 7th 9.00 a.m. Sung Eucharist
December 16th 10.00 a.m. Said Eucharist
December 17th 6.00 p.m. Carol Service
December 24th 11.30 p.m. Midnight Mass
January 4th 9.00 a.m. Sung Eucharist
January 20th 10.00 a.m. Said Eucharist

The Craft Fair in October raised just over £1800. Thanks are due to our Friends of Fleet and PCC members and of course to all the crafters who booked tables and helped to make it such a busy and successful event. Sadly the future for such an event is in doubt, because there are very few regulars in our congregation who feel they can continue to organise such events. It is hoped that others, perhaps in the village or parents from Fleet School, might step forward with ideas of how we can continue to ensure we have the finances to keep the church open.

ST MARY MAGDALENE CHURCH, FLEET 50 /50 CLUB

Please consider supporting this scheme which is a vital part of our fundraising during the year. In these difficult times it is even more important that we find different ways of ensuring there is a future for the church in Fleet. Whilst we only have one or two services a month, we try to ensure the church is open every day and that it is available for baptisms, weddings, funerals and special services throughout the year for Fleet Wood Lane Primary School. The Church is also a precious historic building that has meant so much to so many people for hundreds of years. To maintain this building and keep it open for future generations we really do need your support.

The club runs from January 2026 for 12 months and the annual membership will be £10 per ticket for 2026. You are invited to join the club by completing the membership form below. You may also wish to include additional names for other members of your family or suggest to friends that they might like to purchase some tickets. Each month there is a draw for prizes: £30 and £20.

PLEASE PRINT THE DETAILS CLEARLY

ADDRESS: _____

POST CODE: _____

TELEPHONE NUMBER: _____

EMAIL: _____

NAME	NO of TICKETS @ £10 EACH

Cheques payable to **PAROCHIAL CHURCH COUNCIL OF FLEET** OR
CASH _____ enclosed or directly to the Bank

Sort Code: 20-80-78 **Account No:** 20689408 **Description:** FLEET 5050

Please return form with payment to Gill Graper

Diamond House, Roman Bank, Holbeach Clough, Lincs PE12 8DJ OR

gill.graper@googlemail.com to inform me you have paid directly to the bank and how many tickets you are purchasing.

HELPLINES FOR SUPPORT

During these difficult times there are many reasons why people may need extra support: practical, emotional and spiritual. Many support agencies have existed for a long time, whilst in the past few weeks many other groups have been formed to support people through the present crisis. Not everyone has access to a computer or the internet, so the following may particularly be of use to those people for whom a phone call is their only means of communicating with the outside world.



PHONE: 116123

**FREE HELPLINE FOR THOSE IN
EMOTIONAL DISTRESS**

Particularly for those who are lonely, anxious or depressed, this is a 24/7 service. Samaritans are trained listeners and able to give comforting words, without offering advice or judging people. You can speak in confidence to someone at any time of the day or night.



This is a well known Lincolnshire charity that offers support for the terminally ill. Recently they have set up a helpline for those who are in isolation and have suffered bereavement, because of the death of a loved one during COVID 19.

The specific helpline number for this service is: 0300 303 1897

Available: Monday – Friday 9.00 a.m. – 5.00 p.m.

Monday and Wednesday also until 8.00 p.m.

Whilst churches are closed many are missing the comforting words and music that are so important, particularly at difficult times. There are many offerings on websites and on Facebook pages, but here is a direct phone line that has been set up to help people:
0800 804 8044





Fleet Primary School will be visiting the church for their Morning Assembly on Friday, 28th November and in the afternoon Years 5 and 6 will come to church for their Christingle service. Our thanks go to Micki Carey Slater for organising this event and for all she does in so many schools and churches across the Deanery.

The Christmas season is a special time in the Church Calendar and we are very fortunate this year to be able to have both a Carol Service on 17th December and Midnight Mass on 24th December. Our thanks go to Revd Paul Carey-Slater who is priest for so many parishes in the Deanery at the moment. Did you know that for the 18 parishes in the Deanery there are now only two full time priests? We all need to think and pray about the future for our local churches. They are obviously much loved for the buildings alone, which cost a great deal of money to preserve and look after. Most importantly they are there for worship and for when people need a place of prayer and contemplation; for baptisms, weddings, funerals; for celebration and sanctuary; for friendship and fellowship.

Christmas cards (recycled) are available in church and a huge range of other cards. Please have a look and just leave a donation if you have found a few to take. There is also always a good selection of second hand books to purchase.

This is likely to be the final issue of the Mid Elloe magazine, but there are thoughts of having a monthly short newsletter so that information is still available to as many as possible in our local area. Posters will be on noticeboards about services and special events. Maybe you have ideas about how to sustain our Church for future generations?

Sutton Elloe News Email contact details are

Susan Benfell

Email : Susan.Benfell@ls.keystonemat.org

Geoff Palmer

Email : geoff@gpalmer.myzen.co.uk



Chimney Sweep

07806635548

dkchimneyservices@icloud.com

Google Search DK Chimney Services for customer reviews
& work carried out

Chimney Sweeping, Power Sweeping
Sweep Certificates Issued
Smoke Test Every Sweep
Bird Guards & Cowls Supplied & Fitted
Birds Nests Removed
Chimney Camera Available
Solid Fuel Appliances Serviced & Repaired
All Chimney Repairs & Repointing
Member of Guild of Master Sweeps
Fully Insured and Qualified
Call, Text or Email Dave for free no obligation advice
Church End, Gedney

NEW BRANCH NOW OPEN IN HOLBEACH!



BOSTON ROAD SOUTH, HOLBEACH, PE12 7LR (opposite Tesco)

BRANCH BROS



- **FREE LOCAL DAILY DELIVERY**
*(Delivery Service Mon-Fri,
Free Delivery on orders £25 & over)*
- **TIMBER CUTTING FACILITIES**
 - **TRADE AND RETAIL
CUSTOMERS WELCOME**

Large stocks of:-

- Landscape Products - Paving, Fencing, Decking & Decorative Aggregates
- Building Materials - Cement, Bulk Bags, Blocks
- Timber - Carcassing, Sheet Materials, Softwood PSE and MDF mouldings
- Plumbing & Electrical, Hardware & Fixings, Paints & Decorating, Tools & Workwear

Open:
Monday - Friday 7.30am to 5pm
Saturday 8am to 2pm

01406 426 333
holbeach@branchbros.co.uk



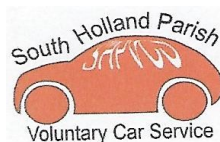
South Holland Parish Voluntary Car Service

Are you a car driver with a little spare time? Could you take people to hospital or doctor appointments?

South Holland Parish Voluntary Car Service is a great service to meet and help people in your community.

We accommodate any time and any day you wish to volunteer to help. Petrol money awarded for journeys driven.

Thank you in anticipation. If you are interested please call Sharon on 07734634336



GEDNEY UNITED CHARITIES

Registered Charity No. 216410

Providing help for individuals and charitable purposes

This may include provisions such as fuel, general items and services,

respite support and annually awarded educational grants



All residents in the Parish of Gedney including Gedney Dyke, Gedney Drove End, Gedney Dawsmere and Gedney Hill may apply

The clerk may be contacted at:

gedneyuc@hotmail.com or phone 07745 583605

Holbeach Meadows

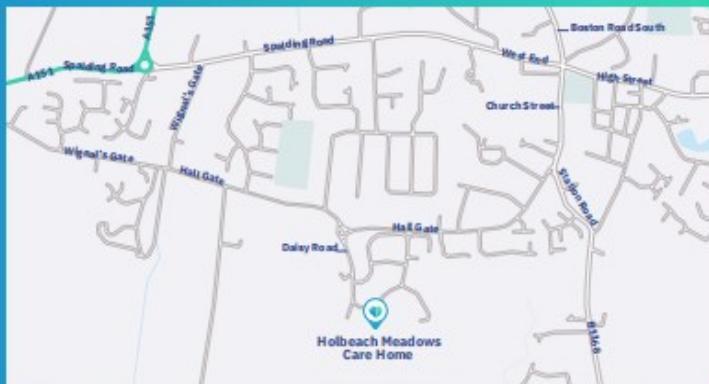


Open Now

We are accepting bookings for full-time occupancy, respite and dementia care

Facilities include:

• Cinema • Hairdressing salon • Garden room • Activities and lifestyle team



Coming from Spalding: Having come through Whaplode take the right turn down Wignall's Gate, follow the road to the roundabout and take the second exit into the Holbeach Meadows estate. Follow Daisy Road around the corner - Holbeach Meadows Care Home is opposite Jasmine Crescent.

Coming from Kings Lynn: Turn off the A17 at the Peppermint Roundabout, taking the first exit, signposted for Spalding. At the next roundabout, take the second exit, continuing towards Spalding. At the third roundabout, take the 3rd exit towards Spalding, and take the left turn down Wignall's Gate. Follow the

road to the roundabout and take the second exit into the Holbeach Meadows estate. Follow Daisy Road around the corner - Holbeach Meadows Care Home is opposite Jasmine Crescent

Coming from Holbeach Town Centre: At the main junction in the town centre, with Park Road, West End, Boston Road South, Church Street and High Street, head down Church Street. At the fork junction (before the Fire Station), turn right into Hall gate and follow the road to the roundabout and take the first exit into the Holbeach Meadows estate. Follow Daisy Road around the corner - Holbeach Meadows Care Home is opposite Jasmine Crescent.



SCAN ME

Holbeach Meadows boasts exceptional facilities and when combined with a personalised activities programme, residents are able to maintain their independence and engage in the social occasions they prefer. At Holbeach Meadows there is something for everyone.

Tanglewood

01406 431222 • info@twhealthcare.co.uk

Holbeach Meadows, Daisy Road, Holbeach, Lincolnshire, PE12 7NJ



MOT – SERVICE – TYRES
EXHAUST – CAMBELTS
CLUTCHES
WELDING REPAIRS

01406 364747

Main Road, Gedney
Spalding, Lincs PE12 OBW



OIL BOILER SERVICE & REPAIR



SECKER WELDING
OIL BOILER SERVICING

Star Cross Holbeach

Call Linden on

07399 527876



WELLBEING WALKS

Long Sutton wellbeing walkers WE ARE A FRIENDLY, SOCIABLE GROUP FOR ANYONE
50 AND OVER

MEETING AT BRITISH LEGION LONG SUTTON EVERY FRIDAY AT 10.30 am

LOCAL WALKS LASTING ABOUT AN HOUR OCCASIONAL AWAY-DAYS

REFRESHMENTS AND CHAT AFTERWARDS £1.50 pp To include refreshments

CONTACT JULIET 07557 342725 OR JANICE 01406 366589

FOR FURTHER DETAILS OR JUST TURN UP

Do join us, we welcome new members

Gedney Victory Hall

EXCELLENT VENUE FOR -

Wedding receptions, Parties, Meetings, Clubs etc.

For more information

For All Enquiries and Bookings 07899537821

David Osborne

est 1980

COMPLETE BATHROOM RENOVATIONS

**Installations
for the disabled**

**Kitchens supplied
and fitted**

**General
plumbing
repairs**

FREE
quotations

Tel: 01406 423715

Mobile: 07715 084249

Friendship Club

New Group beginning - Thursday 17th February 10-12pm.

Join us for Friendship club - £3.00 p/p

Are you 50+? Would you like to meet new friends, have a chat, play a game of cards or scrabble or bring your knitting.

Enjoy tea, coffee, biscuits and company with us.

Come along to - WI Hall, Park Lane - Holbeach

Every Second Thursday - 10-12pm

Book your place by calling 0345 5564 144



DK Landscape & Property Services Church End , Gedney

**Block Paving
Patios
Driveways
Fencing
Tree and Hedge Trimming
All Garden Work
Garden Walls
Shed Bases
Garden Structures**

**Painting & Decorating
Gutter Cleaning and
Repair
Pointing
Facias & Soffits
Decking
Tiling
Roof Repairs
Chimney Services**

No job too small, free no obligation quotes, competitive rates, local service.

dklandscape@icloud.com or mobile 07806635548

GEDNEY JESSE WINDOW

The Jesse Window in churches originates from medieval Christian art and symbolizes the genealogy of Christ, tracing his lineage back to Jesse, the father of King David. It visually represents the prophecy in Isaiah 11:1: “And there shall come forth a rod out of the stem of Jesse, and a Branch shall grow out of his roots.”

Origin

- The concept comes from the **Tree of Jesse**, a biblical motif illustrating Christ's ancestry.
- First depicted in illuminated manuscripts in the 11th century, it spread into **stained glass, carvings, wall paintings, and embroidery** during the Middle Ages.
- The earliest surviving stained glass Jesse Window is from the **13th century at Selby Abbey, Yorkshire**.
- Famous examples include **Wells Cathedral (c.1340)**, **York Minster**, and **St Dyfnog's Church, Llanrhaeadr (1533)**.

Meaning

- **Spiritual lineage**: Jesse is often shown reclining at the base of the window, with a vine or branch growing from him, symbolizing the family tree leading to Christ.
- **Fulfillment of prophecy**: The imagery emphasizes that Jesus is the promised Messiah, rooted in Israel's royal line.
- **Visual catechism**: In medieval times, stained glass windows taught biblical stories to largely illiterate congregations. The Jesse Window was a vivid way to show Christ's divine heritage.
- **Hierarchy of figures**: Ancestors, prophets, and kings are depicted along the branching tree, culminating in **Mary and the Christ Child** at the top.

• In summary

The Jesse Window is both **art and theology in glass**: a medieval visual sermon showing Christ's roots in Israel's royal family, fulfilling Isaiah's prophecy, and reminding worshippers of the continuity between Old Testament promises and New Testament fulfillment. It remains one of the most beautiful and symbolic features of Gothic church design.

Would you like me to create a **timeline of famous Jesse Windows across Europe** so you can see how the tradition evolved over centuries?

At **Selby Abbey**, Jesse lies at the bottom, from whom the vine rises, encircling figures up to Christ at the summit.

At **Wells Cathedral**, the Jesse Window is considered one of the finest medieval stained glass works in Europe.





Could you help someone experiencing grief?

We're looking for volunteers to support people at a local Sue Ryder Grief Kind Space.

Grief Kind Spaces are informal drop-in sessions for people who have been bereaved to share their feelings and experiences.

As a volunteer you will help ensure nobody faces grief alone. No previous experience is needed as full training will be given.



Find out more:
visit sueryder.org/GKVolunteer
email GriefKindSpaces@sueryder.org

Sue Ryder is a charity registered in England and Wales (1052076) and in Scotland (SC039578). Ref. No. 07549d. © Sue Ryder, June 2024.



**Because no one
should face death
or grief alone**



The Lawns & Lakes Camping Site

Camping and Caravanning Site

Lowgate, Fleet, Spalding, Lincs PE12 8LN—Just off the A17 towards Gedney Dyke—half a mile on the left—please use intercom button on key pad for entry

All welcome you don't have to be stopping with us to use the restaurant!!



**Come and Join us for Breakfast on Saturdays from
9.00am—11.00am**

Full English - Eggs Benedict - Or American Pancakes served with Maple Syrup and Fresh Fruit—All freshly prepared on site

Please give us a call to reserve a Table on 07810026107 or just use the intercom on the key pad at the gate to gain entry

We look Forward to Welcoming You



Mossop & Bowser Solicitors

www.mossops.co.uk

We are local, accessible and experienced providers of legal services
including: -

Buying and selling property
Wills & Lasting Powers of Attorney

Estate administration
Divorce and family problems
Employment advice
Disputes
Commercial Law

Find us at:

10 Spalding Road, Holbeach PE12 7LP Tel: 01406 422651

and

30 Market Place, Long Sutton PE12 9JH Tel: 01406 363212

Authorised and regulated by the Solicitors Regulation Authority number
(SRA Number 52592)





Local company based in Holbeach St Marks

For all your heating and plumbing needs Give us a call 07938
613958

oilheatingservices@outlook.co

Free quotations on all work

- **Boiler repairs and breakdowns**
- **Servicing Oil Fired Boilers**
- **Emergency Call Out – 24hrs a day**
- **All aspects of plumbing**
- **Heating**
- **Underground drainage**
- **Bathrooms**
- **OFTEC Certified**

Do you have a property in need of some TLC?

No time for D.I.Y? We have 7 Ways to do it for you.

Repairing floors/doors/skirting

Light plumbing

Putting up curtain rails, banister rails, shelves

Re-sealing baths/showers/worktops/sinks

Re-attaching bathroom/kitchen fittings

Installing external electric/gas box covers

Adjustments/repairs to internal doors and fittings

Painting/Decorating

and generally those annoying little jobs.

We even enjoy building flatpacks!

Fully Insured & DBS Certified

See our Facebook and Instagram pages

facebook.com/7waysgpm

instagram.com/7ways_gpm

We still do free assessments and quotes so why not give us a call?

Proudly working with local estate agents, property landlords
and homeowners in Spalding and surrounding areas



General Property Management Ltd

☎ Charlie on **07935 847007**

☎ Suzan on **07935 847008**

✉ sevenwaysgpm@outlook.com





24 Hr Local Locksmith Service

Honest & Reliable Local Business Quick Response UPVC Multipoint Lock Specialist

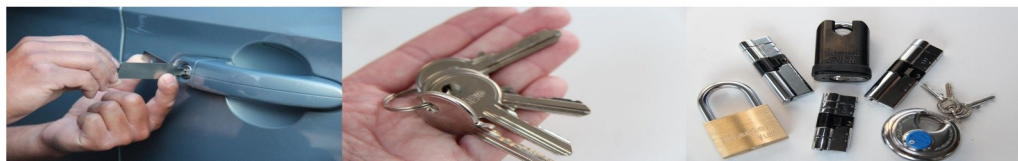
24/7 Service, 365 Days a Year Police Checked Vehicle Keys Cut & Programmed

Domestic & Commercial Locks Supplied Quotes & Advice Security Upgrades

Call Martin On 01406 709089
Mobile 07767 476101

Email : info@lockstocklocksmith.co.uk

www.lockstocklocksmith.co.uk



Defibrillators in Fleet & Gedney

There are now four defibrillators in Fleet.

1st is on the outside of the Rose and Crown, Fleet Hargate,

2nd is at the Branches Lane side of the Fleet Road Garage.

3rd Pavilion, Fleet Playing Field,

4th Farmers Barn, Hazelwood Lane.

There are three in Gedney

1st Gedney Victory Hall, Gedney.

2nd Gedney Drove End Village Hall Dawsmere Road Chapel Gate

3rd Gedney Dyke Village Hall Main Street

They also one at the Co-Op food stores of Holbeach,

This may be just what you are looking for...

**Looking to gain new skills and experiences?
Want to help make a difference?
Do you have a little time to spare?**

At Citizens Advice South Lincolnshire, we have great opportunities for people from all backgrounds, who are looking to give their time to help local communities either working from home or at one of our various locations.

For more information on becoming a volunteer, contact Erica at:
trainingofficer@citizensadvice-southlincs.org.uk



**South
Lincolnshire**





**CHIMNEY SWEEPING ON
ALL TYPES OF APPLIANCES**



STOVE SERVICE AND REPAIRS



CCTV CAMERA INSPECTIONS



**BIRD GUARDS / COWLS
SUPPLIED AND FITTED**



**GUILD OF MASTER CHIMNEY
SWEEP TRAINED**



**SMOKE TEST AND CERTIFICATE
ON EVERY JOB**



AREAS COVERED: LINCOLNSHIRE, NORFOLK, CAMBRIDGESHIRE



WWW.BRETBURN.CO.UK

☎ 01406 328832 ☎ 07474 733301

✉ BRETTBILLARD@BRETBURN.CO.UK

Great Value at



**Television * Audio * Electrical Goods
Satellite and Aerial Installations**

TOYS GALORE

**Photo Booth – Passport,
Driving Licence etc
Approved**

**26-28 Market Place
Long Sutton
01406 362381**



South Lincolnshire

Registered Charity

Blind Society

Number 1182486

JOIN OUR CAMPAIGN TO END LONELINESS

AND SOCIAL ISOLATION

South Lincolnshire Blind Society provides support and advice to help visually impaired people, improving their independence and increasing their quality of life.

We have people living with sight loss who have been waiting for 6 months or more in your area!!

Do you have a few hours to spare and enjoy making new friends??

Why not become a Volunteer??

We are looking for Volunteers to
vice within the Spalding area. If



join our **Home Befriending** ser-
you are friendly, outgoing, have a

WILLS & POWERS OF ATTORNEY

As a retired solicitor, I offer a professional and sympathetic service that will bring peace of mind.

REGULATED & INSURED FIXED FEES, NO VAT, FREE HOME VISITS

"James makes things easy to understand and puts you completely at ease"

Mr. & Mrs. S.

"Extremely helpful and friendly. Made a difficult task very easy and less stressful."

Mrs. B.

"I would consider James an "old style solicitor". I enjoyed his visits and he did an excellent job." Mr. M.

If my approach looks right for you, please get in touch to see if I can help.

Tel 01406 709944

Lincolnshire Will Company



Access to NHS Dentistry is currently limited during the pandemic as dentists have been asked to stop all routine "face-to-face" dental care.

However, if you need urgent dental care, help is at hand:



CALL your dental practice:
They will give you advice over the telephone
and make arrangements for you
if you need to be seen.



If you don't have a dentist, find your nearest dentist and CALL them. You can search for your nearest dentist at: <https://www.nhs.uk/service-search/find-a-dentist>



You can also contact NHS 111:



OR



You can ask for a translator if you need one.
NHS 111 is available 24 hours a day, 7 days a week

If you're deaf, you can:

- use the NHS 111 British Sign Language service:
interpreternow.co.uk/nhs111
or
- call 18001 111 on a textphone

Do not worry if you have COVID-19 symptoms, appropriate arrangements can be made to see you if you need urgent dental care.



The Lawns & Lakes Camping Site

Camping and Caravanning Site

Lowgate, Fleet, Spalding, Lincs PE12 8LN—Just off the A17 towards Gedney Dyke—half a mile on the left—please use intercom button on key pad for entry

All welcome you don't have to be stopping with us to use the restaurant!!



New Service Added

In Addition to our Fish & Chip Service at 5.30pm we are now Pleased to add a 12 noon until 2pm OAP Special Service

**Cod, Chips and Peas/Beans/Curry Sauce for
£10.50**

Please call 07810026107 to reserve a table or just use the intercom button located on the right hand side of the key pad to gain entry (as the gate is closed for security)

We look forward to Welcoming you

SIMON'S ROOFING

Roofing Contractor

~~~

**Phone 01406 490262 / 07742 173058**

**Email:**

**simonsroofing123@gmail.com**

**Over 30 years experience**

**All types of Roofing work**

**undertaken**

**Specialist in Flat Roofing and Lead  
Work**

**Will cover all areas of South**

**Lincolnshire**

**All work fully guaranteed**



***S.R. Brickwork***

**Semi retired bricklayer  
looking for small jobs,  
garden walls etc**

**Call Steve on  
07484653659**





Good Bye and thank you all for your support over the years  
Christine and Laurence

