



# ELEVEN SAYS

OCTOBER /  
NOVEMBER  
2025

ISSUE 315

THE NEWSPAPER OF THE BRAMERTON GROUP OF CHURCHES COVERING 11 PARISHES

## Abiding

To me, 'Abide' is a lovely word. Old-fashioned, maybe, but not easily translated into a modern term. 'Live', or 'dwell' don't seem to have the same sense of continuity and stability. When we sing the hymn 'Abide with me' frequently at Remembrance Services or funerals, the word confers a feeling of comfort and support, 'I triumph still, if Thou abide with me'.

Another hymn, one of my favourites, is 'In heavenly love abiding', and in the King James version of the Bible in the gospel of St. John, chapter 15, Jesus uses the word repeatedly to emphasize the relationship between himself and his disciples, and between the Father and himself: 'If ye keep my commandments, ye shall abide in my love; even as I have kept my Father's commandments, and abide in his love.' Modern versions of the Bible translate the word into 'remain'. Not, to me, the same feeling at all.

In his book, 'Abiding', the author Ben Quash points out that the word implies commitment, and links this with the development of the parish church. He writes that the "celebration of the role of the parish church has a number of aspects, but two key ones are the following. First of all, the parish church is a long-term institution: it abides in time. Indeed, it is committed to the longest possible time-scale. It intends to be in the community as long as the community exists, and the corollary of this is that it also abides in place. This is the second key virtue of the parish church."

Certainly this can be said of all the churches in our group of parishes. All of them can trace their origins back to the Norman period, and some even further. Most have significant Norman or even Saxon features such as magnificent doorways or small, round-topped windows, and even the lost church of Holverstone, a small parish now united with Bergh Apton, is recorded as having had circular, probably Saxon, windows. Those enthusiastic early Christian Saxons, either lords of manors or groups of villagers, built their wooden churches - small and simple - to worship God in. They later raised the funds to rebuild them in flint, managing to find the money to import stone to create the grand doorways and start building tall towers. These buildings have been abiding ever since!

Think what they have abided through: apart from disasters like flood, storms or fires, they have been witness to plagues, wars, major changes in religious practice, periods of prosperity and poverty. They have been altered, enlarged, made lighter by the insertion of large windows; they have been neglected and come close at times to dereliction.

The old church at Framingham Pigot had become very dilapidated when in 1859 it was rebuilt on its original site in the latest Gothic Revival style, to reflect the growing Liturgist movement, celebrating, as it states in the frieze above the baptism, 'the beauty of holiness'.

Some fragments of the old building were recovered and incorporated in the new building, and like all the others, it remained the focus for its parish.



Parishes evolved sometime between the 9th and 12th centuries, sometimes tracing the borders of large manors, sometimes incorporating more than one manor, but forming an area which was served by a particular priest, and therefore centred on a parish church. It was to that church that the people of the parish paid their tithes for the upkeep of the priest, and their rates for the upkeep of the church. It was their church, and was often the identifying feature in the name of the parish if there was more than one settlement of the same name, Carlton St. Peter; Ashby St. Mary; Rockland St. Mary.

Today the rural parish church, and the parochial system itself, is very much the subject of debate and some might say, under threat. Increasing costs and declining numbers of regular worshippers have led to suggestions of 'rationalization', with rural churches being closed and 'worship hubs' being established. However, experiments in this course of action do not seem to have been that successful, and I don't think the communities have benefitted. The parish church is still a focal point in the village, and more so as many other village institutions such as the shop, post office and pub have disappeared, and even church or parish halls have closed or been sold off.

Interestingly, all these centres of activity have arrived over the last couple of centuries - an eye-blink in the lifetime of the parish church - and have gone, but the church is still there. For many centuries it was the meeting place for all community activities, and the destination for the significant points in people's lives of birth, marriage and death, for celebrations and commemorations, and for social get-togethers such as the 'church ales', where the church-wardens would brew up ale and then sell it for church funds, the medieval equivalent of the coffee morning perhaps.

Sadly, there are alternative venues for significant gatherings, and this has led to a loosening of the bond between the church and its community and, let's be frank, a loss of income to keep it upright. Many rural churches are supported by active groups of Friends, and the buildings are maintained to shelter and support the worshippers who get together to share the joy of worship and fellowship, and will always welcome anyone who cares to join them. They are also maintained because many people still feel they are the identifying and central focus of the village, otherwise it would just be a group of houses.

We don't know what the future holds for us, or for our parish churches. Of course, we should not seek to recreate the past, and we have to relate to the needs and priorities of today. I remember the words of Bishop Peter Knott when he came to Yelverton to bless the reordering of the church and the provision of a kitchenette and toilet: he drew attention to all the changes in the building and worship that had happened since it was built all those centuries ago, and pointed out that each generation had responded to the needs of the people of its time. We can make that response and still be a focus for our community.

As part of the current debate on the rural church, I have sometimes been asked what our mission is, and it occurs to me that our most important mission is to abide. Our clergy and congregation still meet together regularly to share worship and prayer; we hold our community in prayer and seek to serve those who need us. Most of our churches are open during the day, and we provide a place of stillness where people can drop in for a few moments of quiet during a busy day; for prayer if they are under stress or are anxious; for a sit-down when they are out walking the dog. Our churches are after all buildings steeped in prayer and stillness over 900 years.

Yes, there are times for grand celebrations and big events, but the church community has gone on doing the ordinary things, saying the familiar words, sharing the joys and sorrows of the community through the joys and sorrows of the Christian story and abiding. John Betjeman sought to express this in his poem, 'Septuagesima', which can be found on Page 3.



- Paths & Patios including Porcelain & Sandstone
- Driveways
- Fencing
- Wood & Composite Decking
- Digger Work
- Hedge & Tree Trimming
- General Clearance and more.

Contact details below for any enquiries, free quotations available

Stuart Frost, High Bungay Road, Loddon. Tel: 07900 432108  
[Stuartfrost1985@icloud.com](mailto:Stuartfrost1985@icloud.com)

## CHARLIE GARLICK ELECTRICIAN

Mobile:  
07999 640808

Email:  
[charlie.s.garlick@gmail.com](mailto:charlie.s.garlick@gmail.com)

Website:  
[www.cgelectricalservices.co.uk](http://www.cgelectricalservices.co.uk)

Alpington, NR14 7NY



## Lady Mole Catcher™

Wildlife Management Specialist

The established, recognised and proven expert you can trust for the control of:

**Moles • Rats • Mice  
Squirrels • Wild Rabbits  
American Mink • Bed Bugs  
Cluster Flies • Moths  
Ants • Fleas • Wasp Nests**

Plus effective Wildlife-Proof Fencing



[www.ladymolecatcher.co.uk](http://www.ladymolecatcher.co.uk)

## Prince Gardening Services

Need a gardener or handyman?

Garden maintenance,  
Mowing,  
Hedge Trimming,  
Pruning, Planting,  
Fencing,  
Handyman Work,  
Basic DIY jobs indoors  
and out,  
Reliable, Insured,  
No job too small.



Tel: 07741 479259 or email  
[princegardening@icloud.com](mailto:princegardening@icloud.com)

## The Hollies Classroom Loddon

[www.loddonnureryschool.co.uk](http://www.loddonnureryschool.co.uk)

Open 8am - 6pm  
for 0 - 5 year olds

Funded places available

Full and part days available

Holiday club for 2 - 9 year olds

**Rated OUTSTANDING by  
Ofsted**

Please telephone Jayne White  
for further information  
or to arrange  
a visit

01508 520286

[info@loddonnureryschool.co.uk](mailto:info@loddonnureryschool.co.uk)



## Website Design

Professional Website Design  
and PC Support Services  
from PSLWeb.co.uk

- Low-cost website hosting,
- Domain name registration,
- Search engine optimization,
- Content Management,
- PC support, help and training.

Call now for a  
free no-obligation  
consultation and quote

01508 491622

[www.pslweb.co.uk](http://www.pslweb.co.uk)

21 Cherrywood, Alpington, NR14 7NJ

## Buzz-Off®

### Live Honey Bee Removal

We harmlessly remove and re-home bees and professionally repair any damage that bees have caused to your property

For a site visit and no-obligation quotation please contact Louise Chapman SA (Hons) PGCE  
 t: 01603 259945 m: 07876 141153  
 e: [louise@buzz-off.co.uk](mailto:louise@buzz-off.co.uk)

For further information about Honey Bee and Wasp removal and view case studies/testimonials visit:  
[www.buzz-off.co.uk](http://www.buzz-off.co.uk)

## ALDIS & SONS FARM SHOP

Church Farm, Framingham Earl  
 01508 492293 / 07831392347

Our Own Grown Veg and  
Salads

Large Selection of Fruits

Our Own Reared Lamb

Local Beef, Chicken,  
Pork and Game

Free Range Eggs

Fresh Cut Flowers

Water Softener Salt

Potatoes by the Bag

SUPPLIERS TO THE CATERING TRADE

## Gibling Florida Villas

Enjoy the holiday of a lifetime in our luxury villa close to Disney World, Universal Studios and all of central Florida's attractions and golf courses

Luxuriously equipped throughout - own swimming pool and games room, 5 large bedrooms, 2 are king sized suites, 4 bathrooms (3 en-suite),

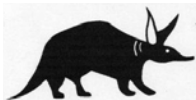
Sleeps 10 comfortably

We can advise you on every aspect of your holiday from flights to attraction tickets.



Contact: Jilly or Stephen Gibling 01508 480608  
[stephen@gibling.com](mailto:stephen@gibling.com) [www.gibling.com](http://www.gibling.com)

Tiled floors  
cleaned  
and  
polished



CRB  
checked  
Trusted  
Trader

**1st Armadillo  
Professional Upholstery &  
Carpet Cleaning**

Carpets, Rugs, Furniture, Curtains,  
Vinyl Flooring, Deoderising,  
Shielding, Patios, Pressure  
Washing,  
Domestic and Commercial

**Competitive Rates  
Fast Reliable Local Service**

01508 495064

07733 213840

[jamie@1staardvark.co.uk](mailto:jamie@1staardvark.co.uk)

[www.1staardvark.co.uk](http://www.1staardvark.co.uk)



**A Qualified Accountant  
and Tax Advisor offering  
a full accountancy and  
taxation service.**

Including: VAT returns, payroll,  
bookkeeping, final accounts,  
tax returns and advice  
for individuals and companies.

**nifaccounts**

t/f: 01508 495559  
 e: [office@nif-accounts.co.uk](mailto:office@nif-accounts.co.uk)

## A W PLASTERING

FOR ALL YOUR PLASTERING NEEDS

**Domestic & Commercial  
Plastering**

Call ADAM

Tel: 01508 480014

Mobile: 07733 107339

SPECIALISTS IN

- PLASTERING
- COVERING ARTEX
- RENDERING
- PAINTING & DECORATING

## HAY FOR SALE



Conventional bales of quality hay  
off ancient grazing meadows.

No chemicals or fertilizer applied.

Large or small loads for delivery  
or collection.

Suitable for Horses, livestock and  
small pets.

Contact Darren Barnes.

07979724438 or 01508495588

## B-Spoked Cycles

**Mobile Cycle Repairs,  
Sales and Servicing**

Based in Bergh Apton and  
covering the surrounding area.

I come to you  
and repair your  
bike on the spot  
or I will collect  
and return it later



Contact Paul on

07905 857767

or

[B-spoked@hotmail.com](mailto:B-spoked@hotmail.com)

## Robert Clough Carpenter/Joiner

*The local service for ALL your  
carpentry/joinery needs, and MORE!!*

Specialists in purpose made windows  
and doors for period and listed  
properties

Prompt, reliable and fully qualified

A local company, established 1988

All aspects of carpentry and joinery  
work undertaken

Ceramic tiling and domestic plumbing

Suppliers and fitters of high quality  
kitchens and bathrooms

01508 493711

[www.robertclough.co.uk](http://www.robertclough.co.uk)

## ROCKLAND WINDOWS, DOORS & REPAIRS



Replacement  
uPVC 'Wood'  
or 'Aluminium'  
Windows and  
Doors, etc

**Replacement sealed units  
Insurance work undertaken**

FASCIAS \* BARGEBOARDS  
GUTTERING \* CLADDING  
SOFFITS & DOWNPIPES

All Carpentry work & roof repairs

Mark Clayton, 87 The Street  
Rockland St Mary, Norwich

Tel: 01508 538757

Mobile: 07710 124949

(Continuation of front page . . . )

### 'Septuagesima'

Let's praise the man who goes to light  
The church stove on an icy night.  
Let's praise that hard-worked he or she  
The Treasurer of the P.C.C  
Let's praise the cleaner of the aisles,  
The nave and candlesticks and tiles.  
Let's praise the organist who tries  
To make the choir increase in size,  
Or if that simply cannot be,  
Just to improve its quality.  
Let's praise the ringers in the tower  
Who come to ring in cold and shower.  
But most of all let's praise the few  
Who are seen in their accustomed pew  
Throughout the year, whate'er the weather  
That they may worship God together.  
These, like a fire of glowing coals,  
Strike warmth into each other's souls,  
And though they be but two or three  
They keep the church for you and me.

#### \*\*\*\*\* Café Church - All Welcome \*\*\*\*\*

The PARISH ROOM, The Street, Rockland St Mary.

With REFRESHMENTS, BIBLE STORIES, MAGAZINES,  
CRAFTS, PUZZLES and GOOD CONVERSATION



FOR ALL AGES

All with our compliments!

SUNDAY 5th OCTOBER



**Theme: "The Harvest: Fishers of Men"**

Drop in any time between 10.30 am-12 noon

Future date: 7th December

For details, or possible help with transport, please contact Nick  
Garrard 01508 538014 or Mandy Ansell 01508 538654

\*\*\*\*\* Café Church - All Welcome \*\*\*\*\*

### Gentlemen, you are cordially invited to a Mid-Day Mardle

An opportunity for men to quench their thirst for good company  
and conversation, share good food and, perhaps,  
to enjoy a glass of something.



New members are always given a warm welcome.

Ferry House, Surlingham

Wednesday: October 1st, November 5th, December 3rd  
(every month, normally 1st Wednesday)  
Any time between 12 noon and 2 pm

Any questions, please contact David Fairbourn on  
01508 538437 or email [surlingham.midday.mardle@gmail.com](mailto:surlingham.midday.mardle@gmail.com)

**Worship in Stillness** is held at 9:30 am on Monday Mornings  
at Cherry House, Wheel Road, Alington.

Half an hour of praise, silence, meditation and prayer followed  
by tea and coffee for those wishing to stay.

## Annual Open Air Service at St Benet's Abbey

One of Norfolk's most  
fascinating traditions  
took place in one of its  
most isolated and  
picturesque locations  
on Sunday July 28th.

The Bishop of Norwich,  
the Right Revd Graham  
Usher, sailed from  
Ranworth Broad to St  
Benet's Abbey aboard a  
traditional wherry, the  
Norada, to lead an  
open-air service in the  
riverside ruins of St  
Benet's Abbey, near  
Ludham. He was met  
by the modern-day  
heirs of the monks who  
lived, worked and  
worshipped here for  
centuries. Local people,  
holidaymakers, visitors  
and pilgrims, who travel  
by boat and footpath for  
the annual ecumenical  
service, also joined the  
procession to the site  
where the high altar  
once stood

Atmospheric St Benet's  
stands in reed-fringed  
water-meadows beside  
the River Bure and the  
annual ecumenical  
service, is open to all.

The abbey of St Benet's was founded in 1019, more than a  
thousand years ago, when Canute, King of Denmark, Norway,  
Sweden and England, gave the land to a community of monks,  
and it was the only monastery in the country to survive Henry  
VIII's destruction. The Bishop of Norwich became Abbot of St  
Benet's and the abbey was never officially dissolved. To this day  
every Bishop of Norwich is also Abbot of St Benet's and lead the  
annual outdoor service surrounded by water, sky and the remains  
of the once-magnificent abbey.

Although St Benet's was never formally dissolved, little is left  
except a gatehouse and an 18th century wind pump. The view is  
much loved by painters and photographers and the site, looked  
after by the Norfolk Archaeological Trust, is free to enter.

There are even earlier traditions of Christian hermits living in this  
holy place. Stories and legends have swirled around the abbey  
and one of its biggest benefactors (and the inspiration for  
Shakespeare's Falstaff) was Norfolk Knight Sir John Fastolf,  
whose grave is here.

*Photos courtesy of Jason Bye*



**Wednesday Fellowship** is a meeting for all people in the  
Bramerton Group and beyond! Meetings are held on the second  
Wednesday of the month 2 - 4 pm at Alington and Yelverton  
Village Hall. We have Christian and secular speakers followed by  
tea / coffee, cake and fellowship. All are welcome.

**October 8th** - The John Aves Education Project - Speaker Anne  
Aves

**November 12th** - 10:30 - 12:00 - Coffee Morning in St. Mary's  
Church, Yelverton

**December 10th** - Local Schoolchildren entertain.

For more information contact Pat Barter on 01508 493570.



## Rockland St Mary Benefice Update

As we move through Autumn, days grow shorter but the lights (and heat) are on in our churches and The Barn! We hope you will enjoy and find helpful our forthcoming service festivals and events.

**Harvest Festival Services.** Our Harvest celebrations continue with Festivals at Claxton (October 5th), Bramerton (Oct 12th) and Kirby Bedon (Oct 19th). As we thank God for the bounty of the harvest, we remember all those who depend on support from the Norwich Food Bank. We're collecting long-life goods at our services and The Rectory. All in-date contributions will be gratefully received. Please see the Norwich Foodbank notice on Page 5 for foodstuffs they're particularly in need of at the moment.

**Warm Welcome Mondays** at the Barn at Rockland Rectory. From Monday October 28th (11.30 am - 2.30 pm) we resume our weekly pattern, with longer opening hours (11.30 am - 3.30 pm) between November 3rd and December 15th. Warm Welcome is a drop in for people of all ages. You're welcome to come in for coffee, tea or a warming lunch of soup, bread and cheese and homemade cakes. It's still free (donations are welcome), plus good Wi-Fi!

**Café Church** meets in Rockland Parish Room for discussion, refreshments, crafts, worship and children's activities on October 5th and December 7th between 10.30 am and 12 noon.

**Remembrance Sunday.** On November 9th we will hold Acts of Remembrance in Rockland St. Mary (9.30 am) and Bramerton, Claxton, Kirby Bedon, and Surlingham (all at 10.50 am). In a world of continuing conflict, we continue to honour the fallen from our parishes in two World Wars and re-commit ourselves to peace and justice today. You are most welcome to attend.

**Autumn Supper in The Barn,** November 13th, 6.30 pm. Come inside for some Autumn cheer! Please see posters and the Rockland Church FaceBook page for more details.

**Communion with Prayer for Healing.** On November 16th we're gathering as a benefice in The Barn at 10 am. It's a comfortable, largely accessible place for all ages to share communion and also to receive prayer for healing, if you wish. This can include anointing with holy oil and laying on of hands, and you are welcome to come forward for yourself or someone else for whom you feel concern. Please contact Helen and Nick for further information.

**Advent Group Service.** This year Advent Sunday falls on November 30th and is the beginning of the Church year and we're being joined by our friends from Thurton Benefice at 10 am in St. Mary's, Surlingham for Holy Communion. Advent is a season of preparation, not just for Christmas, but also to meet Jesus at the end of time or the end of our lives. It's a season that's rich in meaning and it feels appropriate that we enter the Church new year as a Group.

**Tree of Light.** In this time leading up to Christmas our thoughts and feelings naturally turn towards those we have loved and lost. We're holding the annual Tree of Light service in Rockland Church on November 30th at 3.30 pm. This is an opportunity to remember loved ones, light candles and write their names on a star to be placed on the Christmas tree. You are warmly invited to join us then. However, if you're unable to attend, please send us the names of those you remember; we will write them on a star, place them on the Tree and light an individual candle for each person. Please contact Helen or Nick for more information. The stars will remain in Church until the end of Christmas (January 5th). You're most welcome to visit on any day during that period.

**News from the Barn.** After a busy September The Barn is still buzzing throughout the Autumn.

**Art Café** in the Barn opens its doors on October 15th and November 12th between 10.30 am and 12.15 pm. All welcome for good times, friendly company, coffee, and art opportunities! **Art Café Online** meets on Zoom on October 22nd and November 26th. Please contact Nick for your invitation and details of our lively, eclectic programme.

**Still at the Barn** provides a quiet, informal space for reflection, conversation, and response on Sunday afternoons, from 4 pm - 5.30 pm. Still will be gathering on October 19th for Still in Prayer and Still before Advent on November 23rd. Please contact Nick and Helen for more details.

## Thurton Benefice Update

**Authorised Pastoral Assistant:** I am delighted that Lisa Flatman has completed her training and will shortly be commissioned as an Authorised Pastoral Assistant. Her role will be to support me as the parish priest in offering pastoral care to parishioners in the five parishes of our benefice. I am very grateful to Lisa for responding to a sense of call to this ministry and I look forward to working with her and encouraging her as she grows into this new role.

**Confirmation Service:** On **Sunday 2nd November** at 10 am we look forward to welcoming Bishop Ian Bishop, the Bishop of Thetford, to Bergh Apton Parish Church for a Confirmation Service. This will be the main service in the benefice on the day, and I would encourage members of the churches in all five of our parishes to join together to welcome our two confirmation candidates from the parish of Bergh Apton.

**All Souls' Day** also on the **2nd November!** After the excitement of the Confirmation Service in the morning, we offer a more reflective service at 4 pm at St Mary's, Yelverton when we meet to remember our loved ones departed. I write in person to all families who have experienced a bereavement and been supported by the Church in the past year, but the service is very much open to everyone across the five parishes who would like to attend. The short service which includes readings, prayers, a short homily and the opportunity to light a candle in remembrance is followed by refreshments. Please do join us for what is always a well-supported, very special service.

**Remembrance Sunday:** Services will take place in all five parishes in our benefice. Please check the service rota on the back page for timings.

**Midweek Communions:** usually take place on Wednesday mornings at 10.30 am on a rotating basis in Ashby St Mary, Bergh Apton, Framingham Pigot and Thurton and on the first Thursday of each month at Yelverton. Please see the separate table on Page 15 with details of locations and dates. The service is from the Book of Common Prayer and lasts for 30 minutes. I am usually available after the service to meet with anyone who would welcome the opportunity to speak with me in confidence in a church setting.

**Norwich Foodbank:** The Thurton Benefice has supported the Norwich Foodbank for several years and there are collection boxes at the back of each of our church buildings. The amount donated has continued to be very generous in a couple of our parishes but has tailed off rather in others. As we approach the winter months when pressure on many families increases with rising heating and fuel costs, now is a very good time to try to reinvigorate our support for this essential charity. If we all managed to donate just one or two items each month, it would make a huge difference. Thank you for your support. Please check the latest poster from Norwich Foodbank (on Page 5 in this edition of Eleven Says and on the notice boards in the churches) for details of their 'Harvest Appeal' and the most needed items.

**VJ Day commemoration:** My thanks to John Ling and Chris Johnson as the main organisers of the VJ Day commemoration at the War Memorial in Bergh Apton Churchyard on the evening of the 15th August and for those who took part in the ceremony in whatever way. It was a very fitting end to the events held in the village this summer to commemorate this important time in the history of our nation.

**Safeguarding:** The churches of the Thurton Benefice are committed to the safeguarding, care and nurture of everyone within our Church community. PCC members and all volunteers who work with children or vulnerable adults have completed or are undertaking the appropriate safeguarding training and the PCCs are adopting formal safeguarding policies to ensure we comply with all current legislation. If you have a safeguarding concern please contact our Safeguarding Officer, Mrs Leo Smith, 01508 493695 or me on 01508 484174. Where a child or adult is at imminent risk do not delay: call 999.

**Home visits and Home Communions:** I am very keen to visit anyone who is unwell or feeling isolated or lonely, either simply for a conversation or to share Holy Communion in their home. If someone cannot make it to church, the church comes to them! Please do contact me if you, or anyone you know, would like a visit. I am particularly keen to hear if a parishioner has been admitted to hospital; I would rather be told several times than not at all!

**Revd Chris Ellis: 01508 484174**



## From the Registers

### BAPTISMS

20/07/25	Henry Thomas WINN-VIEIRA	Bergh Apton
16/08/25	Digby John McLeod WALKER	Claxton
16/08/25	Robert Bruce Stirling WALKER	Claxton
16/08/25	Rufus Scott Perceval WALKER	Claxton

### MARRIAGES

09/08/25	Jamie KERRY and Frances DUNHAM	Bergh Apton
23/08/25	Joshua BEALE and Caitlin AVERY	Bergh Apton
23/08/25	Harry LARTER and Ruby COX	Framingham Pigot

### FUNERALS, BURIALS, CREMATIONS, INTERMENT OF ASHES

10/07/25	Maureen Olive MARKKANEN (nee Hale) Carleton St Peter (Interment of Ashes)	
17/07/25	Terry KITT (87) (Interment of Ashes)	Ashby St Mary
23/07/25	Janet May HIGH (86)	Framingham Pigot
31/07/25	Helen Innes (Lynne) JERMY (84)	Bergh Apton
01/08/25	Dennis WALL (84) (Interment of Ashes)	Thurton
01/08/25	Sheila WALL (89) (Interment of Ashes)	Thurton
05/08/25	Anthony WATSON (63) (Interment of Ashes)	Framingham Pigot
15/08/25	Michael (Mike) James CLOUGH	Surlingham

## RIP Revd Canon Ivan Bailey, 1933 – 2025

We were saddened to learn of Ivan Bailey's death in July. Ivan served faithfully as Priest in Charge of Kirby Bedon with Bixley and Whitlingham for many years and is still fondly remembered by many of the villagers.

He was well known across the county for his broadcasting role on Anglia TV and Radio Norfolk. An able and witty communicator, Ivan shared his faith far beyond the boundaries of church life.

His funeral service was held on August 11th at St Andrew's Church, Eaton. We give thanks for his life among us and commend him into God's care, together with his beloved wife Romaine.



## A Wedding with a difference . . .

On the 23rd August, Ruby Cox and Harry Larter came to be married at St Andrew's Church, Framingham Pigot. They are a lovely couple who prefer to keep life simple and do things rather differently.

They arrived together in a shiny, green vintage car. The bride wore a pretty, white, mid-length dress and cowgirl boots, and the groom looked very relaxed in a check shirt and shorts. Little bridesmaid, Lily, had a lovely pink dress and matching pink Stetson, trimmed with twinkling lights and the remaining 'bridesmaid' was the patient family dog!

The 80 guests were in a variety of cowboy attire and were joined by 10 well behaved dogs sporting neckerchiefs to complete the theme. One even sported a tiny cowboy hat too! Traditional hymns mixed with country and western music, made it a very joyful occasion and instead of a formal reception, everyone was invited onto the field next to the church for Prosecco and delicious cakes, served from the back of a truck, while the children and dogs played happily in the sun.

It was indeed proof that at a wedding - simple or extravagant - really "all you need is Love".



## Wedding in Bergh Apton

Having been blessed with so much lovely weather this year, the sun continued to shine for the wedding of Josh Beale and Caitlin Avery. They were married in St Peter and St Paul Church, Bergh Apton, on 23rd August.

Caitlin grew up in Bergh Apton and Josh in Mundham. They're currently living in North-east Norfolk.



## Celtic Daily Prayer at St Mary's Church, Surlingham

This is the lovely view seen from inside Surlingham Church porch as we sit together to pray and meditate on a Bible reading and a reflection for the day. We meet at 10 am for approx half an hour on the 2nd and 4th Tuesday mornings of the month. Future dates are: **October 14th and 28th. November 11th and 25th.**

Everyone from the Group is very welcome to join us. If you are unable to come but would like to receive the chosen material for the day, please email [mandy.ansell44@gmail.com](mailto:mandy.ansell44@gmail.com) and I will send you a copy for your own reflection time.

Revd. Mandy Ansell, 01508 538654



## Bishop's YANA (You Are Not Alone) Appeal

A big thank you to everyone who raised money for the Bishop's Lent Appeal 2025. With cake sales, collections, lunches and Lent events, people across the diocese of Norwich raised a magnificent £16,415 for the Norfolk-based farming and rural mental health charity YANA (You Are Not Alone). The money will help fund the telephone helpline.

The Bishop of Norwich chose YANA for his Lent Appeal this year and presented the grand total to charity founder Melinda Raker and trustee Virginia Edgecombe.

The Bishop said: "Thank you to every single person who held an event, gave their time and money, collected donations or played any part in raising this wonderful sum for YANA. I am so pleased that the Diocese of Norwich is able to help its vital work, standing alongside people struggling with stress or depression and those caring for them."



NORWICH.FOODBANK.ORG.UK

Norwich  
**Foodbank**  
Together with Trussell

**HARVEST  
Appeal**

**OCTOBER 2025**

**REQUESTED DONATIONS**

**Top 5 items**  
Tinned vegetables  
Tinned meat  
Tinned fruit  
Pasta sauce  
Milk (UHT)

**Also**  
Fruit juice  
Teabags (40s)  
Rice pudding  
Tinned tomatoes  
Penguin bars (or similar)

We can split these up to share to multiple parcels for a treat

Donations can be brought to our warehouse,  
Unit 14 NR5 8BF  
Mondays, Thursdays, Fridays 9am - 1pm  
[norwich.foodbank.org.uk](http://norwich.foodbank.org.uk)

## VJ Day Service Held At Norwich Cathedral

The bravery of all who served in the Far East during the Second World War was remembered at a special service at Norwich Cathedral to mark the 80th anniversary of VJ Day. VJ Day (Victory over Japan Day) marked the day Japan surrendered on 15 August 1945, which ended the Second World War.

The 80th anniversary commemorations began with a military parade march through the Cathedral Close ahead of the Service of Thanksgiving and Remembrance. Hymns were sung by Norwich Cathedral Choir and more than 1,000 people gathered to pay their respects.

During the service wreaths were laid by His Royal Highness The Duke of Gloucester, Olga Henderson, who was representing the National FEPOW Fellowship Welfare Remembrance Association, and The Lord Dannatt GCB CBE MC, on behalf of the Veterans of Norfolk.

Following the service, Their Royal Highnesses joined a reception in the Cloister where they spoke with civilian internees, family members of Far East prisoners of war and representatives of the National FEPOW Fellowship Welfare Remembrance Association (NFFWRA).

Regiments from East Anglia were among those who suffered in the prisoner of war camps before and after victory was declared over Japan on 15th August 1945.

On Friday, the Duke and Duchess of Gloucester joined members of the military and relatives of those who were caught up in the conflict.

Speaking ahead of the service, the Dean of Norwich, the Very Rev Andrew Braddock, said it would be about "the human cost and our common humanity".



## WEA Loddon Branch

We are looking forward to a series of exciting courses in the Autumn Term. We have worked hard to bring these face-to-face lecturers to Loddon. No other courses are available in Norfolk from the WEA apart from the dreaded online ones!

Starting on **6th October**, Nigel Herwin will give a series of lectures Exploring the Films of Stanley Kubrick. Course No. Q00023969.

Joe Williams will be giving a course on English Poetry from Shakespeare to Today starting **3rd November**, Course No. Q00024485.

Finally, Neil Storey will be looking at Three Different Views of Norfolk during the 1st and 2nd World Wars and also the social history of the Norfolk Coast. Course No. Q00024233.

No previous knowledge of the subject is necessary and you can be assured of a lively discussion! Each course will be of three weeks duration and take place in the Jubilee Hall, Loddon on Monday afternoons, 2 pm - 4 pm. Each course will cost £48.00. To enrol: Visit [www.wea.org.uk](http://www.wea.org.uk) and search course code, location or title and pay online, or phone: 0300 303 3464. Remissions are available for those receiving certain benefits.

If you would like to join our mailing list for the WEA please contact Sharon by email, [swsmith949@gmail.com](mailto:swsmith949@gmail.com) or call 01508 520386 or call Alison on 01508 521976.

## South Yare Wildlife Group

**BIODIVERSITY SUCCESS – The Hop of Hope** • There is exciting news from the marshes and reed beds of Wheatfen Nature Reserve on the Southern Broads where long-extinct Large Marsh Grasshoppers (LMG) are being re-introduced, alongside a number of other sites. South Yare Wildlife Group (SYWG) has been working with Citizen Zoo to re-introduce this large, colourful insect back into its former natural habitat of the Norfolk Broads. SYWG recruited volunteers (Citizen Scientists) who were supplied with a vivarium, a thermometer and, most importantly, LMG eggs to rear in their own homes. It takes about 6-7 weeks for the insects to reach full adulthood. Each grasshopper is then colour marked and ready for release.

**The Release** • The Citizen Scientists gathered together to liberate their beautiful insects. Once on site (Wheatfen Reserve for us), each batch is examined, counted and sexed by the group Entomologist. Finally, excitement builds as in single file we troop over to the specially-selected reed bed within the reserve. We open the mesh release pens and in a very short time LMGs are flying and jumping all around us. The insects are very strong flyers, so there is a hope and possibility of them not only settling at Wheatfen, but progressing to new sites such as Strumpshaw Fen Nature Reserve.

**A promising future** • This is the second year of the project, and last year's release of LMGs had successfully laid eggs, as a second generation of young LMGs were spotted on the marsh. They have been joined by the release of this year's brood, hopefully creating a large viable colony which will spread along the Yare valley and once again take their rightful place in the elaborate eco-system of the Broads landscape. It is wonderful to be part of a biodiversity success story.

**Further information** about the project can be found on the BBC Norfolk website, or on the Govt. Natural England website under 'Hop of Hope'.



SOUTH YARE  
WILDLIFE GROUP



### Upcoming events

**Thursday 9th October**  
**Hedgehogs talk** with  
Julia Paul from Hodmedods  
Hedgehog Support.  
7.30 Claxton Village Hall

**Wednesday 12th November**  
**Bringing Back the Beaver**  
with Ursula Jutta from  
Norfolk Rivers Trust.  
7.30 Poringland Community Centre

[www.southyarewildlifegroup.org](http://www.southyarewildlifegroup.org)



## Loddon Flower Club

Summer has sadly now gone and we look forward to the autumnal colours in our gardens and also in the flowers in our homes. Both our next club meetings look to be very entertaining.

**Tuesday 7th October** - Crystal Dyball - 'Behind the Shed Door' !!

**Tuesday the 4th November** - David Wright - 'A Broadland Tour'.

Doors open at 6.30 for a 7 pm start for our meetings which are held in St John's Lecture Hall, on George Lane in Loddon. All flower arrangements are raffled at the end of the evening and we have an interval for refreshments and a catch-up half way through.

In December we hold our Christmas Open evening, with stalls, games, refreshments, along with a demonstration, which this year will be Wendy Goodliff, 'Countdown to Christmas', more details next time.

If you would like further information regarding our meetings, or would like help with family flowers for any occasion, please contact us in any of the following ways; email: [loddonflowerclub@gmail.com](mailto:loddonflowerclub@gmail.com), call Tricia on 01508 480522 or Jenny on 01508 520254. We also have a website: [www.loddonflowerclub.co.uk](http://www.loddonflowerclub.co.uk) and a Facebook page: Loddon Flower Club.

We look forward to seeing friends, old and new.

## Poringland Community Cinema at Poringland Community Centre

**Friday 12th September** - Bridget Jones in Mad about the Boy (15)  
Comedy/Romance. Stars Renee Zellweger, Chiwetel Ejiofor, Leo Woodall

**Friday 10th October** - The Black Bag (15)  
Thriller. Stars Michael Fassbender, Cate Blanchett

**Friday 14th November** - Mr Burton (12A)  
Drama/Biography. Stars Harry Lawtey, Toby Jones, Lesley Manville

**Friday 12th December** - The Penguin - Lessons (12A)  
Comedy/Drama. Stars Steve Coogan, Jonathan Pryce

Tickets are £5 on the door (includes tea or coffee). Doors open at 6.45 pm. Films start at 7.30 pm

## Buena Vista Social Club at Poringland Community Centre

Dates for your diary: Friday Film Nights: September 5th, October 3rd, November 7th, December 5th

Contacts are: John on 01508 494358 or Carol on 01508 492630





**ALPHA CONSTRUCTION**  
(East Anglia) Ltd

New Builds ✓  
Renovations ✓  
Extensions ✓  
Carpentry ✓  
Kitchens ✓

01508 538699  
07747 778972

alphaconstructionea@gmail.com

**YOUR FRIENDLY CHIMNEY SWEEP**  
PORINGLAND, NORWICH, NORFOLK

[www.mrchimney4u.co.uk](http://www.mrchimney4u.co.uk)

Guild of Master Chimney Sweeps Member  
I offer a professional, clean and friendly service/advice

Wood burners Inglenook fires Multi-fuel stoves Aga/Rayburn  
Open fires Gas/Oil Inset stoves Biomass

Certificates Issued. CCTV Flue/Chimney Checks. Stoves Serviced/Repaired

David Wilson, 54 Cawstons Meadow, Poringland, NR14 7SX  
info@mrchimney4u.co.uk 01508 493219 or 07835 757528

**Trevor Myhill**  
Painter & Decorator

Over 25 years experience

(01508) 480657

FREE ESTIMATES GIVEN - NO JOB TOO SMALL



**Home Design**  
QUALITY FITTED KITCHENS & BEDROOMS

We come to you to design and quote  
Wide variety of Doors and Worktops inc Corian/Granite

- ❖ Kitchen Refurbishments
- ❖ Highly Experienced
- ❖ Local reliable tradesmen
- ❖ Computer Aided Designs
- ❖ No obligation quotations
- ❖ Very Competitive Prices
- ❖ Supply and Fit or Supply only

Please Telephone  
01508 538691 or  
07810 77 33 23

8 Rookery Hill Rockland St Mary, Norwich NR14 7EW  
Email: robin@homedesignnorfolk.co.uk

[www.homedesignnorfolk.co.uk](http://www.homedesignnorfolk.co.uk)





**DAVID WHISKERD BUILDERS LTD**

SPECIALISTS IN: • NEW BUILDS • EXTENSIONS  
• BARN CONVERSION • LISTED & CONSERVATION BUILDING  
ALTERATIONS AND RENOVATIONS • RE-POINTING

BASED IN BERGH APTON [info@dwbuildltd.co.uk](mailto:info@dwbuildltd.co.uk)

**TEL: 01603 328110 MOB: 07762 909754**  
[www.davidwhiskerdbuilders.co.uk](http://www.davidwhiskerdbuilders.co.uk)

**John Hurrell & Sons**

Lawnmowers and Garden Machinery  
Sharpening, Service, Sales, Spares



- Power Driven Petrol Mowers
- New & Used Sales
- Hedge Cutters, Chainsaws
- Blower Vacs & All Garden Machinery
- Shear Sharpening Service

**FLO GAS**  
Bottled FLO GAS Stockist

**COBRA** **DANARM** Professional Garden Machinery  
**HAYTER** **STIHL** **TORO** Count on it. **Webb**

Prompt, Reliable, Professional Service With Over 40 years Experience.  
FREE Local Collection and Delivery.  
Authorised Hayter Stockist and Service Dealer

Old School Building, Kirby Road,  
Kirby Bedon, Norwich. NR14 7DS  
[www.johnhurrellandsons.co.uk](http://www.johnhurrellandsons.co.uk)

**01508 492244**

Reliable, Friendly, Family Business

**Kingdom**  
landscapes



Individual or whole landscaping projects

For a free no obligation quote, please call with your enquiry.

- Patios • Paths • Driveways • Walls • Fencing • Decking
- Water features • Turfing • Clearance and renovation
- General construction work

Contact: Darren Barnes, Nunns Cottage, Framingham Pigot,  
Norwich, NR14 7QJ

For quality landscaping services call 07979724438 or  
01508 495588 or [kingdom.landscapes@yahoo.co.uk](mailto:kingdom.landscapes@yahoo.co.uk)

Website: [www.kingdomlandscapes.co.uk](http://www.kingdomlandscapes.co.uk)

**YELVERTON GARAGE**  
A146 LODDON ROAD

SERVICE - DIAGNOSTICS - AIR CON - MOTs

**01508 492758**

**V.W. AUDI SPECIALISTS**



[www.vwaudinorwich.com](http://www.vwaudinorwich.com)

**QUALITY LIGHT COMMERCIAL VEHICLE SALES**

WITH FULL AFTER SALES SERVICE

**01508 494464**

[www.yelvertonvans.com](http://www.yelvertonvans.com)

# Village News

## Alpington & Yelverton

### Friends of St. Mary's

Our annual Coffee Morning took place on Saturday, 16th August at the Wheel of Fortune.



As it was a special year, our usual offering was enhanced by the Mini Spangles Steel Band and special children's activities, including a face painter. It was an overcast day, but in some ways this was a relief from the extremely hot weather, and a number of those who came sat around to enjoy the music after the official end of the event. Amazingly, we managed to beat last year's excellent total by raising the incredible sum of £760.07.

Our thanks are due to all those who participated or donated, those who gave cakes, items for the raffle, tombola and stall, sponsored the band (the cost was covered, so it did not come out of the takings). Also to those who helped on the day, and, of course, to all who came along and spent so generously. This will be a hard act to follow. Thanks are due to Barry and Naomi, of course, for being so helpful to the Friends.

Important details of our next event to be held in Alpington with Yelverton Village Hall:

**Saturday, 11th October - 'An Evening with Wally Webb: Forty Years of BBC Radio Norfolk'.** The legendary presenter has a wealth of anecdotes on the reports and activities he was involved in, and the National Press has asked, "Is Wally Webb the real Alan Partridge?"



The talk will be followed by supper. Tickets are £10, maximum 50 people, so please book early.

Please contact Mary Fewster (01508 492059) for tickets.

## Bergh Apton

### Harvest Festival

**Bergh Apton Church**  
**Sunday 5th October**  
**10:00 am**

**Decorate the Church**  
**for Harvest**  
**Saturday**  
**4th October**  
**9.30**



### QUIZ 'n' CHILLI

**Saturday 25th October**  
**6.60 pm for a 7.00 start**

*Bergh Apton's Brain of Britain*

To join this friendly, good-humoured event, compile your team and **book in with Milton - 01508 550473.**

Let Milton know your team's meal preferences. Chilli options range from very mild (Bolognese) to moderately fearsome, and veggie/gluten-free will be catered for.

**£9 per person** – cash or cheques payable to Bergh Apton PCC preferred.

Ideal team size is however many can comfortably sit and eat at one table – 7-8 – but exceptions can be made.

Things get under way at 6.30pm when the teams gather to buy a few raffle tickets, size up their rivals and have a first look at the Table Round.



**Another Bergh Apton Church Event**  
**Saturday 18th October, 7pm**  
**Charlie Haylock presents a talk**  
**- 'History of Spoken English'**



**If a history of our spoken language doesn't sound like your idea of a fun night out, best think again!**

Charlie is a brilliant speaker, yarn spinner, entertainer and a fount of information on a multitude of subjects.

He brings this subject alive with a combination of his own rakish wit and an encyclopaedic knowledge of the roots and development of our native tongue.

There will be an interval with refreshments, a Q&A session at the end and Charlie will bring a selection his books for sale.

This is Charlie's third appearance in Bergh Apton Church. We would have liked to book him in future years but sadly (for us), he retires at the end of 2025, so it would be a pity to miss this chance to see him!

**Tickets: £12** Advance booking is required as Charlie's previous appearances have been sell-outs.

For enquiries/to book, call Shirley 01508 480576 (do leave a message)

Or Email [bachurchwarden@outlook.com](mailto:bachurchwarden@outlook.com)

<https://berghapton.org.uk/bergh-apton-festival-2025/>



## OPEN DAYS

### ALPINGTON & BERGH APTON

Church of England VA Primary School



**Monday 20th Oct. at 9.15am and 11am**  
**Tuesday 4th Nov. at 9.15am and 11am**  
**Thursday 6th Nov. at 9.15am and 11am**

Meetings with the Headteacher and tours of the school will take place for interested parents of new intake children 2026.

Please email the school office at [office@alpington.norfolk.sch.uk](mailto:office@alpington.norfolk.sch.uk) or ring **01508 492700** to book your appointment at the times shown above.

**"Let every  
Light shine"**



Visit our website for a flavour of what life is like for the children at Alpington and Bergh Apton.



**Be a Star  
and donate  
a gift**

**Be a  
Star!**



Last year, The Salvation Army in the UK distributed over 84,000 gifts. In Norwich alone over 850 gift bags were distributed. This year, they're expecting the number of families requesting help to rise as a result of the ongoing cost of living crisis.

As in previous years, they'll be running a Christmas Present Appeal, collecting donated (new) presents until mid-December. Each gift bag given out contains five gifts. One larger present, two smaller presents, a book and colouring or quiz books and stocking fillers.

There will be a **special child-centred Family Service at**  
**BERGH APTON CHURCH**

on  
**Sunday 16th November at 11 am**  
to support this year's

**Salvation Army Christmas Present Appeal**

You can 'Be a Star' by donating and helping to spread the joy of Christmas to families whose children would otherwise not receive a gift.

Bring along your donations of **new, unwrapped** toys or gifts, for children and Young People aged 0 – 16

Afterwards, the Bergh Apton team will arrange for them to be taken to the Salvation Army Norwich depot where the gifts will be wrapped before distribution to those in need.

Here are a few gift ideas

- 0-3 years: dolls, teddy bears, cot mobiles, baby clothes, bath toys, puzzles
- 3-5: dolls and action figures, cars, lorries, colouring sets, pencils, crayons, books, puzzles
- 5-9: educational games & toys, stationery (colouring sets, pencils, crayons, school sets), books, puzzles, wordsearch, crosswords
- 9-12: games and toys, stationery, books, t-shirts, hair accessories, gloves, scarves, hats
- 13-16: books, make-up and toiletries (please try to ensure non-allergic ingredients if possible), gloves, scarves, hats, t-shirts, hair accessories and gift vouchers

There will also be an opportunity at the service to make monetary donations to the Appeal.

Nearly-new toys in good condition can also be donated for sale in Salvation Army shops to raise funds for their valuable work



# Village News

## Bergh Apton

**Bergh Apton Festival 2025** - (probably) the final event of the year:

**Friday 21st  
November at 7 pm:**  
**A concert by  
Norwegian choir,  
Lardal Kantori.**

We're delighted to welcome them back again this year and they will bring a selection of songs and carols in Norwegian and English to herald the Advent season.



**Tickets £12** from 01508 480576 / email [bachurchwarden@outlook.com](mailto:bachurchwarden@outlook.com) or book online via the Eventbrite link on the website [berghapton.org.uk/bergh-apton-festival-20245](http://berghapton.org.uk/bergh-apton-festival-20245). With over 30 people in the choir, we have to be able to anticipate the number of tickets sold so we do ask for advance booking. This also ensures that we cater adequately and have enough glasses.

### Bergh Apton & District Society

Bergh Apton Village Hall, Cooke's Road, Bergh Apton NR15 1AA

**Wednesday 8 October 7.30 pm.** Before he retires from Public Speaking, **Pete Goodrum** joins us again, this time to talk about Norwich in the 50's and 60's. Come and view the City layout and be reminded of businesses operating in those days.

Finally to end our 2025 speaker evenings, on **Wednesday 12 November 7.30 pm** Chris Garrod will be talking to us about the Dad's Army Museum, based in Thetford, dedicated to the TV programme which is still being rerun on our screens today.

As usual there will be our Raffle and tea/coffee and biscuits and the opportunity to sign up for our Christmas dinner and other events still to take place.

We look forward to seeing visitors, old and new.

### ARE YOU FEELING BRAINY?

Join us for a

### QUIZ & CHILLI EVENING

AT  
**BRAMERTON VILLAGE HALL**  
ON  
**FRIDAY 17TH OCTOBER**  
**6.30pm**

A fun quiz and a homemade bowl of chilli.  
Come along as an individual or as a team  
(max. 6 per team)

We'll make sure there's a team for everyone!

£10 per head  
bring your own drinks and nibbles.

Booking essential, please email  
[bramertonvillagehall@gmail.com](mailto:bramertonvillagehall@gmail.com)  
or

complete a slip from the village hall & post in VH  
letterbox. Limited spaces so please book early.

### Bramerton Village Hall

### Friday Social Evenings

We invite you to join us at our regular social evenings held on the last Friday of each month. Bring something to drink, bring some nibbles and come along for a chat, or maybe have a game of pool or darts . . .

From 7 pm - 9 pm

**Our next social evenings  
are: Friday 31st October,  
Friday 28th November**

**Sunday 7th December  
Christmas Event**

## Bramerton

### Let it rain!

St. Peter's Church Roof Appeal last year was very well supported and, as well as the many generous donations received, we were indebted to the following for their grants: The Benefact Trust - £2500, The Norfolk Churches Trust - £5000, The Geoffrey Watling Charity - £2000 and The Garfield Weston Foundation - £5000. Additionally, an exceptional donation was received from the Higham Family Trust, who wished it to be in memory of Richard Higham's wife, Jacqueline Higham, who loved living in her home in Bramerton Village.

As a result it allowed us to proceed with the roof repairs and other associated work. Thankfully, it was found the Chancel roof was not in as bad condition as feared with the rot confined to just the top battens, so a useful saving was made. With the roof open it was able to be seen that the structure had been repaired, which the architect thought was prior to the Second World War from the materials used with the original rafters which were laid flat and alongside them the 'new' rafters set upright. The roofs would originally have been thatch, which at some point was changed to lead as shown in Ladbroke's sketch of 1809 and then to Westmorland slates in the 1866 restorations, all of which helps to explain the multiple layers of the roof structure.



The existing long slate ridges were considered to be part of the problem of water getting in as they simply sat on top of the slates, so new roll top grey clay ridge tiles were used bedded on lime mortar. The similar slate ridges on the North Transept and South Porch (which was leaking) were also changed to the clay bedded ridges. With the replacement of the rainwater fittings and associated drainage on the north side, the church is now well prepared for the winter weather.

The north side scaffold allowed the architect a closer inspection of the roof and serious deterioration of the stone capping to the Nave gable wall and the water table on the adjoining buttress was discovered. So the saving on the roof repairs enabled this additional work to be included along with the redecoration of the Chancel walls. We also were able to have the section of churchyard wall that was in danger of falling into the road rebuilt using funds we already had. It was then found that one of the panels in the Reredos had slipped out of its frame and down the back, which required the screen to be carefully released to gain access and all five panels, some of which had bowed, have been secured.

Finally, we were able to wave goodbye to Phoenix Build our contractor and now revisit the list of outstanding maintenance and await the result of next year's Quinquennial Inspection!

**Tony Evans**

(St. Peter's Church PCC Fabric Officer)

## Cottontails Pre-School in Alington has places available from September 2025

We have sessions available for 2, 3 and 4 year olds.

We have a dedicated and highly qualified team who are waiting to give your child the best start to their education!

15 and 30 hours of funding available.

Please call: 07585 873508 or email:

[alingtonpreschool@gmail.com](mailto:alingtonpreschool@gmail.com) to arrange a visit.



# Village News

## Carleton St Peter

### Carleton St Peter Church News

The annual flower festival was another well supported occasion which saw some spectacular arrangements. The theme celebrations proved popular and the church looked beautiful. Thank you to all who helped in so many ways in making this event happen. Also, special thanks to those of you who came and supported it or sent a donation.

## Claxton

### St Andrew's Church News

St Andrew's took over Claxton Community Café in August. We had a bumper attendance and this, along with a successful raffle and donations, meant we were able to make almost £500. It was a fun but manic morning and we would like to thank everyone who supported us. We will be taking the café over again in December and hope this will be equally successful.

We were delighted to have not one, but three christenings in Claxton Church one Saturday in August. The family christening for the three young brothers, Digby, Robert and Rufus Walker, was a very happy affair.

### Claxton and Carleton Village Hall

Our September trustees meeting was the last one for our chairman Adrian Gidlow, who is moving away. He has been an enthusiastic 'hands on' chairman for several years and his practical common-sense approach to managing the hall will be missed. Thank you, Adrian, for all you have done.

The village hall trustees are a committed team, who work together to ensure the village hall is a well-maintained facility, available for all members of the community. If you would like to know more about becoming a trustee and joining our happy team, you can call Sarah on 01508 480555 or Janice on 01508 480693.

### Claxton Community Café - Dates for your diary

As is our usual custom, we will take part in the nationwide Macmillan Coffee mornings and our October Community Café (Wednesday 1st) will be in aid of Macmillan Cancer Research.

Both the October and November (5th) cafés will be held at the usual time of 10 am -12 noon.

Look out for our 'winter warmer' cafés in December, January and February. These will run from 10 am until 1 pm. In addition to the usual fare of bacon rolls, savoury items and cake, we will be offering simple lunches of homemade soup and bread.

Our December (3rd) café will feature festive craft stalls and a Christmas raffle.

## Framingham Pigot

### Sunshine all the way!

It was a perfect summer's day on the 9th August, and the garden at the Cottage on the Beck in Framingham Pigot was open for its Annual Garden Party.



Friends, neighbours and families enjoyed a wonderful afternoon of wandering among the beautiful flower beds, looking around the many stalls and sitting in the sun, chatting happily over cups of tea and sampling delicious cakes.....with

the occasional visit from the resident turkey reviewing the situation!

Thank you so much to Leeanne and her family and helpers for a wonderful afternoon which raised over £800 to be divided between St Andrew's Church, EACH and Hallswood Animal Sanctuary.



## Rockland St Mary

We're raising money for Children In Need at our Coffee Morning on **Friday 14th November**, from **10 am - 1 pm** in the Parish Room, Rockland St. Mary. Tea, coffee, home made cakes, raffle, crafts

Contact Jayne Regan 538087



### Rockland St Mary & District Gardening Club

#### Summer Show, 2025

In spite of the lack of rain there were a good number of entries for Rockland's Gardening Club Summer Show on 19th July.

The winners were:

**Floral Class** - Susie Chapman.

**Vegetable Class** - Carol Timson

**Domestic Class** - Julia Kaye.

**Best in Show** - Deborah Smith for her tomatoes.



Thank you to all who supported our Gardening Club - the numerous competitors, those who donated raffle prizes or plants for sale, and to those who joined us for refreshments - your support was very much appreciated. We hope you enjoyed the day as much as we did.

**The Gardening Club** normally meets in the Rockland Parish Room at 7.30 pm on the fourth Thursday of the month throughout the winter months when we have interesting speakers. In the summer we enjoy garden visits which begin in May. New members are always welcome.

The topic for **October 23rd** should prove very interesting for all gardeners when Ian Bedford tells us all we might ever need to know about slugs!!

On **November 27th** Annette Hurt will talk about 'Gardening Naturally. Moving from chemicals', which again, should prove to be very interesting.

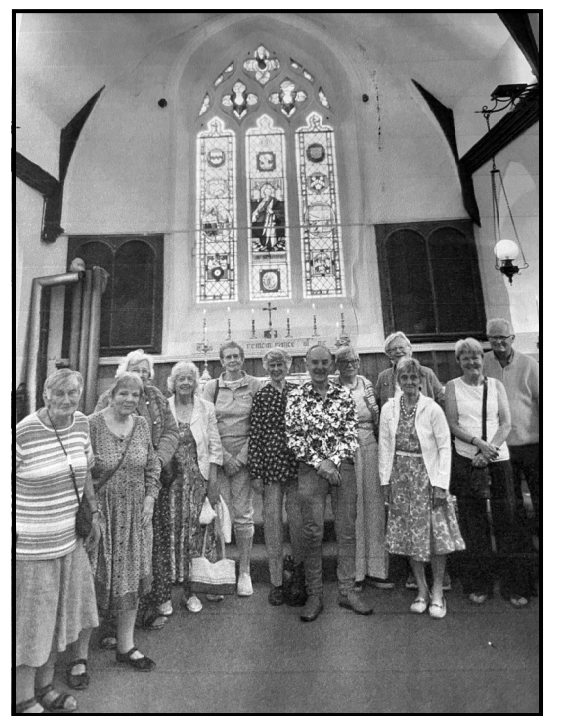
If you would like to join the Gardening Club please contact Ruth Everett, 01508 538231 or email [everettapplebee@hotmail.co.uk](mailto:everettapplebee@hotmail.co.uk)

### Rockland St Mary & District W.I.

Our W.I. recently enjoyed a lovely afternoon in the village of Thurton, guided by Lynton Johnson. Firstly, he gave our group of 12 a very informative tour of the local church, St. Ethelbert's, with its stunning window glass and medieval wall paintings.

Afterwards we enjoyed a wonderful Afternoon Tea in the sunshine, surrounded by the colours and scents of numerous flowers and shrubs in Lynton and Ray's beautiful and colourful garden.

We're now looking forward to the Autumn for colours of a different kind.



On **Tuesday October 14th at 7.30 pm** in the Margaret Mack Hall, Rob Spray is coming along to tell us all about "North Norfolk's Chalk Reef". This is an Open Meeting where everyone is welcome. Admission will be £5 for visitors with refreshments and a raffle to follow later in the evening. We look forward to seeing you there.

If you would like any more details or need a lift to any of our meetings please do contact Ruth 538231 or Sandra 538100.

# Village News

## Surlingham



The sunflowers are setting seed and apples falling with the wind, the autumn cycle is upon us, harvest time too.

Looking at the VJ Day record book in the church, 80 years ago now, I read where village members were at that time and what they were doing, from being prisoners of war in the Far East to being members of the land army at home. Many I came to know.

The structure of communities has changed so much and everyone is busy but if anyone has time to spare to take on small jobs that keep our Church and St. Saviour's ruins looking cared for, it would be a great help. There are daily visitors out for walks and one picks up snippets of history, the children enjoy 'the Butterfly Corner' or people just come for quiet time.

Hopefully, with success of the Lottery Funding bid for repair to the church tower, a new chapter of activity will open at St. Mary's. If you would like to know more, please ask one of the PCC members.

Pippa

### Inter-village Quiz 2025

The very popular annual inter-village quiz will be held **Saturday October 18th at 6 pm.**

Although conducted by last year's winners, Surlingham, it will be hosted by Claxton at their village hall where there is ample parking.

Teams do need to pre-book by emailing [SurlinghamNewsletter@outlook.com](mailto:SurlinghamNewsletter@outlook.com). We suggest SIX people per team. Cost of entry (to include a cooked meal and hot drinks) is £12 per person. We look forward to having a fun night!



Friends of Thurton Church

## A Concert

by

**Fine City Chorus**

**Friday 28<sup>th</sup> November**

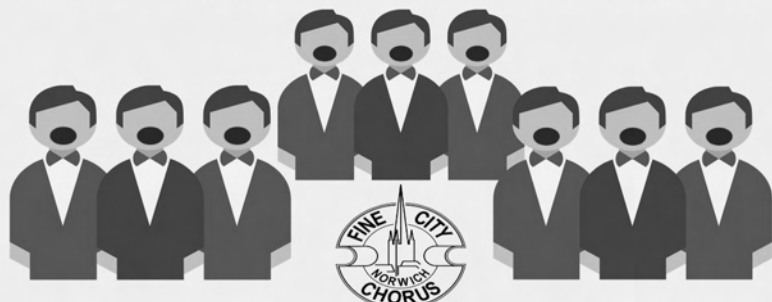
**7.30pm**

**St Ethelbert's Church, Thurton**

**Tickets £12**

Ticket includes Light Refreshments & Complimentary Drink

To Book Contact: 01508 480629 or 01508 484174



## Thurton

### Thurton Fuel Allotment Charity Christmas Monies

Christmas may be many weeks away but the trustees of the Thurton Fuel Allotment Charity would like to remind parishioners that money is distributed each Christmas to residents of Thurton who have lived in the Parish for 5 years, are in receipt of a State pension or are Widows/widowers.

There is one payment per household. If you received the payment in 2024 there is no need to register again but if you have become eligible to receive the monies in 2025 please contact Patricia Black on 01508 480695 or email: [blacks@btinternet.com](mailto:blacks@btinternet.com) by November 5th 2025 with your details.

### Ashby & Thurton Community Café

Ashby & Thurton village hall, Ashby Road, Thurton, NR14 6AX

**Monday 13th October, Monday 10th November  
Monday 8th December**



Hot and cold drinks available, as well as cakes and savoury snacks

Everyone is welcome.  
We look forward to seeing you!!!

Contact Carol Powell for more information on 01508 480089

Charity Reg. No.: 303890

### The Bramrocks Panto is coming

Oh yes it is!

**28th, 29th, and 30th November**

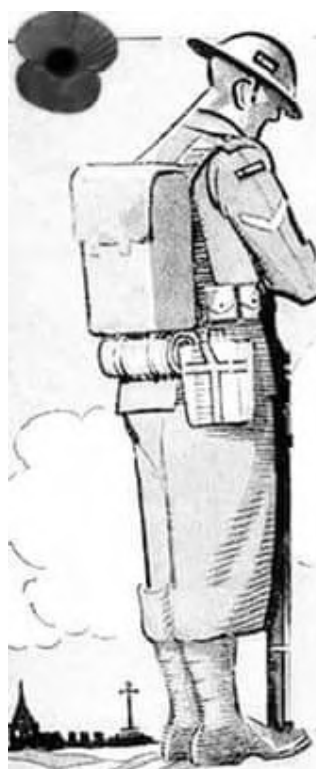
Look out for posters or visit  
[www.bramrocks.co.uk](http://www.bramrocks.co.uk)



### WANTED sheep grazing

For small flock of Kerry hills. No plot too small.

Please contact  
Caroline 07966 926055  
or Jamie 07557 319842



### Remember Them

They heard the call, they answered yes  
They proudly wore the battle dress,  
For us who live they gave their all  
That our great flag would never fall.

Let us this day remember all  
Who answered yes, who heard the call,  
Who gallantly opposed the foe;  
On them let us our praise bestow.

They bravely died that we might live,  
Unselfishly their lives did give  
For King and Country and all men,  
That we might live in peace again.

Let us with praise these men salute,  
Let peace and love be our pursuit,  
Let's daily lead a life humane  
That they will not have died in vain.


D Ross Campbell



**MATT STEELE**  
*Carpet & Upholstery Cleaning*  
 Over 20 Years Experience  
**01603 360160**  
 View our work on Facebook  
 @ Matt Steele Cleaning  
 Services  
 or  
[www.carpetcleanorwich.co.uk](http://www.carpetcleanorwich.co.uk)


**PAWS & CLAWS**  
 Grooming   
 A complete dog grooming service with kindness and care. All breeds welcome. Trimming, Grooming, Shampooing, Nail Clipping, Ear Cleaning  
 Telephone Jane on  
**01508 538757**

**YOUNGS**  
 FUNERAL DIRECTORS OF LODDON  
*At your time of need we are here to help you;*  
 "Quiet guidance, gentle words and our professional knowledge will help you make the right decisions for you and your family."  
**'Providing the very best care'** *- Rachael Barber*  
 19 Bridge Street Loddon NR14 6NA  
 Tel: **01508 528274**  
 



Buyer of old car spares, manuals and badges.  
 Also interested in enamel signs, pub memorabilia, coins, tools, old toys, air rifles and any other old interesting objects.  
  
**Steve Webster**  
 01508538453 Evenings / Weekends Only  
 07734591929  
[stevewebster1955@hotmail.com](mailto:stevewebster1955@hotmail.com)  
 Will arrange visits at your convenience. You never know what you can find in your shed or garage!

**Simmonds Clockmaking Ltd**  
 MEMBER OF THE BRITISH HOROLOGICAL INSTITUTE  
 Repairer, Conservator and Maker of Clocks  
  
 Tel/Fax: (01508) 548085  
 No. 3, The Raveningham Centre, Beccles Road,  
 Raveningham, NORWICH. NR14 6NU  
[www.clockmaking.co.uk](http://www.clockmaking.co.uk)

**Adepta Accountants**  
 Proud to be serving local people & business for 20 years  
 ✓ Professional service on your doorstep  
 ✓ Free consultation  
 ✓ Upfront pricing  
 ✓ Experienced & friendly staff  
**Our Services**  
 ✓ Annual accounts    ✓ Tax returns & advice  
 ✓ Bookkeeping & VAT    ✓ Payroll & pension compliance  
 ✓ New business start ups    ✓ Making Tax Digital compliance  
 Call Jacque today **01508 537024**  
 www.adepta-online.co.uk    jacque@adepta-online.co.uk  
 Office Address Hill Farm, Kirby Road, Kirby Bedon, NR14 7DU

**Looking To Improve Your Home Then We Can Help!**  
  

- GARDENS & LANDSCAPE DESIGN
- DRIVEWAYS & PATIOS
- EXTENSIONS
- DIGGER / MICRO DIGGER HIRE
- DRAINAGE
- FENCING
- ALTERATIONS & ANYTHING ELSE!

  
 If there is a project that you feel we could help you with, please contact us on **07930 378804**  
 Email: [gbcivilsltd@gmail.com](mailto:gbcivilsltd@gmail.com)  
 **GB GROUNDWORKS & CIVILS LTD.**  
 ALPINGTON, NORFOLK    T 07930 378804

**STARKINGS & WATSON**  
 HYBRID ESTATE AGENTS  
  
**Thinking of selling or letting?**  
 Call **01508 356456** Poringland Office  
 2a Shotesham Road, Poringland  
 Call **01508 820830** Loddon Office  
 2a High Street, Loddon  
 Free advice from your local property experts.  
 You'll like the way we **move.**  
 For our full list of available properties, or for a FREE INSTANT online valuation visit  
**[starkingsandwatson.co.uk](http://starkingsandwatson.co.uk)**  
  

We hope you enjoy reading Eleven Says. Your feedback, any comments or ideas for improvement will be greatly appreciated. Please remember to send us your village news, future events, etc., as not all our readers look on social media, therefore, local fundraising events could be missed.

**Rockland St Mary  
Post Office and Store**  
Open 7 days a week  
for all your local needs

All Post office services including: Free cash withdrawals/Deposits from most major banks, Euros and Dollars now in stock. Motor vehicle licence office

**Store** - Fresh fruit, Veg and Milk, Fresh Bread baked in store. Wide range of Groceries, Newspapers, Magazines, Stationery, Greeting Cards, Off Licence, Sweets, Soft Drinks, Ice-cream. Electric, Gas and Mobile Phone Top-ups. National Lottery and more.

HOT and COLD FOOD and DRINKS TO GO

Call Karen, Alan or Emma Tranter  
01508 538123,  
[rocklandstmarypo@hotmail.com](mailto:rocklandstmarypo@hotmail.com)

**Opening Times**

Shop: Mon-Sat: 8am - 8pm.  
Sun and Bank Holidays: 9am - 4pm

PO: Mon-Fri: 9am - 1pm. 1.30pm - 5.30pm.  
Sat: 9am - 12.30pm

**MURDOCH**  
Opticians

- Sight testing
- Spectacles
- Contact lenses
- Easy parking / all ground floor

**Opening Hours**

Mon-Fri: 9am - 1pm 2pm - 5pm

Sat: 9am - 12 noon

Sun: closed

4 The Street, Poringland NR14 7JR

01508 494670

[www.murdochoptical.com](http://www.murdochoptical.com)

**JR HANDYMAN SERVICES**

Tiling Laminate flooring  
Plaster repairs Decorating  
Fixtures and fittings  
Fencing Plumbing repairs  
Flatpack assembly Paving

**Your reliable local handyman**

Contact Jason on

Mobile : 07962 125002

Email : [jasongrix@gmail.com](mailto:jasongrix@gmail.com)



**'Applebee'**

Rockland St Mary  
01508 538231

Beekeeping equipment,  
courses and advice



Local Honey for sale

Selection of local grown fruit  
and vegetables available

Contact:

Ruth and John Everett

# Firewood

Seasoned Hardwood, mostly Ash, Oak, Beech  
Softwood and Mixed loads also available

Available from Autumn 2018 onwards

Free delivery 10 miles radius of Framingham Pigot  
Delivered in bulk bags or tipper trailer loads

Contact: Darren Barnes, Nunns Cottage,  
Framingham Pigot, Norwich. NR14 7QJ

07979724438 or 01508 495588  
[kingdom.landscapes@yahoo.co.uk](mailto:kingdom.landscapes@yahoo.co.uk)

[www.kingdomlandscapes.co.uk](http://www.kingdomlandscapes.co.uk)



**G J STOKES**

**NORFOLK REED THATCHER**

FREE ADVICE and ESTIMATES  
COUNCIL APPROVED.  
COMPETITIVE RATES

PEAR TREES, RECTORY LANE,  
ROCKLAND ST MARY,  
NORFOLK. NR14 7EY

Tel: 01508 538267

07715 711637

Email: [enquiries@gjstokes.co.uk](mailto:enquiries@gjstokes.co.uk)

Website: [www.gjstokes.co.uk](http://www.gjstokes.co.uk)

NORFOLK SOCIETY  
AWARD WINNER



**L A Robinson**  
Architectural Services Ltd

- ✓ Planning Drawings
- ✓ Building Regulations
- ✓ Architectural Design
- ✓ Listed Building / Conservation



[www.larobinson.co.uk](http://www.larobinson.co.uk)

07786753349

[louise@larobinson.co.uk](mailto:louise@larobinson.co.uk)

**WOODLAND  
STOVES**

AN EXTENSIVE AND COMPETITIVELY PRICED RANGE OF WOODBURNING AND  
MULTIFUEL STOVES ON SHOWROOM DISPLAY.

FULLY QUALIFIED HETAS REGISTERED INSTALLATION SERVICE AVAILABLE.  
SUPPLIERS OF FLUE LINERS, FLUE PIPES, CHIMNEY COWLS AND ACCESSORIES

Please Phone or check our website for opening times.

The White House, Mill Road,  
Ashby St Mary, Norfolk, NR14 7BN  
w: [www.woodlandstoves.co.uk](http://www.woodlandstoves.co.uk)  
t: 01508 480351

**Chimney Sweep**

Certificates Issued  
Insurance Approved  
Prices from £40  
Discounts for Multiple Sweeps

Call Tom  
07816 462542  
01508 528522

or find me on Facebook  
[sweep&vacchimneysweeping](https://www.facebook.com/sweep&vacchimneysweeping)



**ARBORCARE (UK) LTD**



Arborcare Tree services specialises in all aspects of tree care including;

Tree Felling, Crown reduction, Crown Thinning, Crown Lifting, Deadwood  
removal, Pollarding, Stump Grinding, Hedge cutting and Garden Clearance.

We also can help with TPO and Conservation applications where necessary.  
Free quotations and advice. Fully qualified and insured.

Travis Sarginson Tel: 01508 492730 Mob: 07905 612127

[travis@arborcareuk.co.uk](mailto:travis@arborcareuk.co.uk)

[www.arborcareuk.co.uk](http://www.arborcareuk.co.uk)

1 Fox Rd, Framingham Pigot, NR14 7PZ



**DHS**

# Landscaping

Complete landscaping service available including: paths,  
patios, driveways, decking, turfing, seeding, fencing, planting,  
tree work, clearance & renovation and creating low  
maintenance gardens. Garden design service available.

Call Mark for any enquiries, free quotations &  
advice: 01508 538734 / 07798 516919

email: [dhslandscaping@gmail.com](mailto:dhslandscaping@gmail.com)

or find us at: [www.dhslandscaping.co.uk](http://www.dhslandscaping.co.uk)

**DHS Landscaping Ltd. The Old Forge, Bramerton, Norwich NR14 7DW**

Products and services advertised in this publication are not necessarily  
endorsed by the Eleven Says editorial board.

Articles in this publication do not necessarily express the views of the  
Bramerton Group Clergy or the Eleven Says editorial board.







## Care that works for you

Our founder, Peter Shaw, was less than impressed with the care received by a number of his relatives, he believed there must be a better way.

Focusing on the quality of care, careful recruitment, high quality training and paying The Home Team's professional carers better and more fairly than other home care companies.

Above all, it's about allowing enough time to care for our clients as they would really like. On time and never rushed, our care is tailored specifically to the individual client. Which is why, according to the national review site [homecare.co.uk](http://homecare.co.uk), The Home Team is one of the top client-rated home care companies in Norfolk.

- Companionship
- Personal care
- Medication
- Home help
- Dementia care
- Appointments
- Shopping & errands
- End-of-life care

Please contact us to discuss how we might be able to help:

☎ 01603 926465

[info@thehometeam.care](mailto:info@thehometeam.care)  
[www.thehometeam.care](http://www.thehometeam.care)



The Home Team is a Norfolk company.



## Volunteer drivers needed in your area!

- Do you enjoy driving?
- Meeting people?
- Helping others?



**Why not give the gift of a lift.**

**As a Travel Norfolk Volunteer driver, you'll help people get to:**

- Medical and health care appointments
- Day care
- Essential shopping
- Social activities

**Unpaid role, expenses covered for every journey.**



## SM Osteopathy

### Osteopath in Surlingham

Restoring movement and relieving pain naturally and effectively

I have over 28 years experience in treating back and neck pain; headaches; shoulder, hand and wrist problems; lower limb pain; infant, paediatric and pregnancy issues, as well as sports injuries.

I use hands on osteopathic techniques, dry needling, taping, ergonomics advice as well as exercise and rehab programmes to help restore balance to your body so you can feel better.

Book online [www.smosteopathy.co.uk](http://www.smosteopathy.co.uk)

WhatsApp: 07944 855101

[info@smosteopathy.co.uk](mailto:info@smosteopathy.co.uk)

Tremere, Mill Road, Surlingham, NR14 7AF



JERMYN & CO.  
CHARTERED ACCOUNTANTS

A local firm of **Chartered Accountants** with over 25 years of experience.

- VAT
- Tax Return
- Tax Planning
- Capital Gains Tax
- Bookkeeping
- Probate & Estate planning
- Pension Compliance
- Payroll
- Corporate Finance
- New Business Start-up
- Charity
- International Services
- Probate



KARL JERMYN  
Director

Book a **FREE** consultation with us today:

[www.jermyn.co.uk](http://www.jermyn.co.uk)

01508 824 105

[office@jermyn.co.uk](mailto:office@jermyn.co.uk)

## R.B.COPPING FUNERAL SERVICE

Independent Family Funeral Directors Since 1935

For Personal Attention with Dignity and Respect

Private Chapels of Rest

Memorials & floral tributes supplied

Pre-paid funeral plans available



125 The Street, Poringland,  
Norwich, NR14 7RP

Tel. 01508 494434

56 Langley Road, Chedgrave,  
Nr Loddon NR14 6HE

Tel. 01508 521159

[www.coppingfunerals.co.uk](http://www.coppingfunerals.co.uk)





**Decorating**  
**Ian Poole**

Painting, Tiling, Wallpapering  
Hand-painted kitchens/furniture

**01502 710257/07952022436**  
E:decor@ipooledecorator.co.uk  
www.ipooledecorator.co.uk  
Reliable & Insured

**R J Plumbing & Heating**

• Bathrooms • Heating  
• Plumbing • Gas & Oil  
• Free quotes • Renewables

Contact 07954 122085 | 07881 951591

**SARAH WYATT HEALING & GEMS**

Reiki & Crystal Healing  
Acupressure Massage  
Reiki level 1, 2 & 3 Courses

Bespoke Handmade Gemstone Jewellery  
Repairs/Restraining  
Jewellery Making Workshops

www.sarahwyatthealingandgems.uk  
07949661468

Accredited Therapist & Qualified Reiki Master/Teacher

**Surlingham Timeshare Swimming Pool**

Are you interested in having an indoor heated swimming pool exclusively for yourself, family or friends? If so, please ring (01508) 538206.

3, 6 or 12 monthly bookings for weekly slots available, also one offs. Open seven days a week 6.30 am - 10 pm. We are situated 6 miles SE of Norwich between Surlingham and Rockland St Mary.

Yare Valley Farm Shop open 8am - 9pm. Producers of Yare Valley Rapeseed Oil. To order: 01508 538206 or [www.yarevalleyoils.co.uk](http://www.yarevalleyoils.co.uk)

Window Cleaning • Pressure Washing  
Render Cleaning & Treatment • Soffits • Fascias  
Cladding Cleaning • Conservatory Cleaning

**Daniel Barber**  
07947 636274  
www.dsbexteriorcleaning.co.uk

Call for a FREE QUOTATION

**ARB ENGINEERS**

**TREE & HEDGE SERVICES**

TREE REMOVAL  
STUMP GRIDING  
HEDGE CUTTING  
POLLARDING  
CROWN LIFT/ REDUCTIONS

WOODCHIPPER HIRE WITH OPERATOR  
PROFESSIONAL WASTE REMOVAL  
FULLY INSURED  
ON & OFF ROAD VEHICLES

ON SITE MILLING

CALL TODAY FOR YOUR FREE QUOTE  
**07748 461202**  
**WWW.ARBENGINEERS.CO.UK**

**HC HARPER CARPENTRY**

Covering all aspects of your home projects!  
And everything in between.

• Doors • Decking  
• Skirting & Architrave • Wardrobes  
• Media Walls • Bathrooms  
• Flooring • Kitchens

Free and Friendly Quotation  
07710 174 784  
info@harpercarpentry.co.uk

**HELEN SAPEY**  
MSSCh. MBChA

QUALIFIED SURGICAL  
CHIROPODIST  
VISITING PRACTITIONER  
Registered Member of the British Chiropractic Association

Call: 01508 480137 or 07765620561 for a home visit

**CHRIS CLITHEROE**  
PAINTER & DECORATOR  
Interior and Exterior  
Free estimates  
Tel: (01508) 480283  
The Cottage, Chapel Road,  
Ashby St Mary. Norwich  
NR14 7BH



**HOLIDAY LET.**  
**The Barn at the Well House, Rockland St Mary.** 1 bedroom barn available for holiday lets, weekend stays, etc. All amenities. Call Lisa Reynolds, 07939 037743 or 01508 538551 or email: [lichreynolds@gmail.com](mailto:lichreynolds@gmail.com).

**VILLAGE HALLS**  
**Alpington and Yelverton** - Main hall, large committee / club room, kitchen and dining area. Excellent heating. Car park. Children's play area. £10.50 an hour for regular user groups and private functions. Business and trade £21 an hour. For bookings email: [alpingtonvillagehall@gmail.com](mailto:alpingtonvillagehall@gmail.com) or call mobile 07747 443567, Website address: [www.alpingtonvillagehall.wordpress.com](http://www.alpingtonvillagehall.wordpress.com).

**Ashby and Thurton** - Main hall with kitchen facilities and/or committee room available for private hire per hour, day or half day. Discounted rates for regular contract bookings. Ideal for meeting groups and social activities. Please contact Laura Vaissiere, telephone: 01508 480773 or email: [ashbythurtonvillagehall@gmail.com](mailto:ashbythurtonvillagehall@gmail.com).

**Bergh Apton** - Large main hall with stage plus smaller room, fully-fitted kitchen, heating throughout. Disabled toilet with baby-changing area. Large car park, gardens and play park. Contact Hilary Ling on 01508 480439 or email [hilary.ling@btinternet.com](mailto:hilary.ling@btinternet.com).

**Bramerton** - Spacious, refurbished hall with separate fully equipped kitchen. Free Wi-Fi. Beautiful enclosed garden and large car park. Disabled facilities. £9 per hour, minimum hire 2 hours. Daily rate available and discounted rates for regular bookings. Please contact Alison, 07976264469 or Duncan, 01508 538444.

**Claxton & Carleton St Peter** - Spacious refurbished well-equipped hall. Fitted kitchen. Ideal for one-off functions and regular users. Disabled facilities. Large car park. Free high speed broadband. £10 per hour or by session. Bar available. Contact Judy Jackson, 01508 480128 or Sarah Carter, 01508 480555, or email: [contact@claxtonvillagehall.co.uk](mailto:contact@claxtonvillagehall.co.uk). Website: [www.claxtonvillagehall.co.uk](http://www.claxtonvillagehall.co.uk)

**Rockland St Mary - Margaret Mack Hall** available evenings and weekends for private parties, meetings and social activities. Rates per hour or per day. Contact after 4 pm please, Deb Sayles, 01508 537077, or email: [deborah.sayles8@gmail.com](mailto:deborah.sayles8@gmail.com).

**Rockland St Mary - The Parish Room** is available for hire. With excellent kitchen facilities it is ideal for social functions, parties, clubs and meetings. Hire rates are extremely reasonable. Contact Jayne Regan, 01508 538087.

**Roberts & Son Printers**  
For all your printing requirements

Established for over 60 years

01508 520221 | [print@robertsandson.co.uk](mailto:print@robertsandson.co.uk)

Print Design Supplies

Digital, Litho & Wide Format  
Professional Colour Printing

2-6 Bridge Street • Loddon • Norwich • NR14 6EZ

## Midweek Communions in October and November

All Services will be held at 10.30am.

### October

Wednesday 1st - Ashby St Mary  
Thursday 2nd - Yelverton  
Wednesday 8th - No Service  
Wednesday 15th - Framingham Pigot  
Wednesday 22nd - Thurton

### November

Wednesday 5th - No Service  
Thursday 6th - No Service  
Wednesday 12th - Bergh Apton  
Wednesday 19th - Framingham Pigot  
Wednesday 26th - Thurton

All are very welcome to these said services of Holy Communion from the Book of Common Prayer. Services last 30 minutes.

	5th Oct Trinity 16 Green	12th Oct Trinity 17 Green	19th Oct Trinity 18 Green	26th Oct Bible Sunday Green	2nd Nov All Saints Sunday White/Gold	9th Nov Remembrance Sunday Red or Green	16th Nov 2nd before Advent Red	23rd Nov Christ the King White	30th Nov Advent Sunday Purple	7th Dec Advent 2 Purple
Ashby St Mary	11.00 HC		Join Thurton		11.00 MP	10.50 Remembrance PT		11.00 PT		
Bergh Apton	10.00 Harvest Festival PT		09.30 PT	09.30 HC	10.00 HC and Confirmation with the Bishop of Thetford	10.30 Remembrance Service	11.00 Salvation Army present appeal PT	09.30 HC BCP		09.30 PT
Bramerton	09.30 Family Service	16.00 Harvest Festival				10.50 Remembrance Service				
Carleton St Peter	11.00 MP				11.00 HC					
Claxton	09.30 Harvest Festival		09.30 HC		09.30 HC	10.50 Remembrance Service				09.30 HC
Framingham Pigot		10.00 Benefice HC				10.50 Remembrance Service HC		11.00 HC		
Kirby Bedon			11.00 Harvest Festival			10.50 Remembrance Service				
Rockland St Mary	10.30 - 12 Café Church in Parish Room	09.30 MW	16.00 Still at The Barn	09.30 HC		09.30 Remembrance Service	10.00 HC with Healing Prayers at the Barn	09.30 <u>HC</u> 16.00 Still at The Barn	15.30 Tree of Light Service	10.30 - 12 Café Church in Parish Room
Surlingham		11.00 HC		11.00 HC		10.50 Remembrance Service		11.00 HC	10.00 <b>Group</b> HC	
Thurton	Join Ashby		11.00 Harvest Festival			14.00 Remembrance Service	10.00 Benefice HC			
Yelverton	09.30 PT		09.30 HC	16.00 All 4	16.00 All Souls	09.30 Remembrance Service HC		16.00 All 4		09.30 HC

Midweek Communions in October and November are outlined on Page 15.

CODE: HC = Holy Communion; E Praise = Evening Praise; FC = Family Communion; FW = Family Worship; MP = Morning Prayer; EP = Evening Prayer; .PT = Parish Team; VM = Vestry Meeting

Bible Readings Sunday by Sunday: October and November 2025

Date	Old Testament	Epistle	Gospel	
05/10/25	Habakkuk 1.1-4; 2.1-4	2 Timothy 1.1-14	Luke 17.5-10	Trinity 16
12/10/25	2 Kings 5.1-3,7-15c	2 Timothy 2.8-15	Luke 17.11-19	Trinity 17
19/10/25	Genesis 32.22-31	2 Timothy 3.14 - 4.5	Luke 18.1-8	Trinity 18
26/10/25	Isaiah 45.22-25	Romans 15.1-6	Luke 4.16-24	Bible Sunday
02/11/25	Daniel 7.1-3,15-18	Ephesians 1.11-23	Luke 6.20-31	All Saints Sunday
09/11/25	Job 19.23-27a	2 Thessalonians 2.1-5, 13-17	Luke 20.27-38	Remembrance Sunday
16/11/25	Malachi 4.1-2a	2 Thessalonians 3.6-13	Luke 21.5-19	2nd Sunday before Advent
23/11/25	Jeremiah 23.1-6	Colossians 1.11-20	Luke 23.33-43	Christ the King
30/11/25	Isaiah 2.1-5	Romans 13.11-14	Matthew 24.36-44	Advent Sunday
07/12/25	Isaiah 11.1-10	Romans 15.4-13	Matthew 3.1-12	Advent 2
Harvest Service Readings				
	Deuteronomy 26.1-11	Philippians 4.4-9	John 6.25-35	

Please note: At Holy Communion, where only two readings are used, the first reading will usually be the Epistle, and the second will always be the Gospel reading. At other services where two readings are used, the first will usually be the Old Testament reading, and the second can be either the Epistle or the Gospel readings.



At the going down of the sun,  
and in the morning . . .  
we will remember them

CLERGY OF THE BRAMERTON GROUP		ROMAN CATHOLIC PARISH OF PORINGLAND AND LODDON		ELEVEN SAYS EDITORIAL BOARD										
<b>Thurton Benefice</b>  <b>Revd Chris Ellis</b> The Rectory 29 Ashby Road THURTON NR14 6AX <i>Tel.</i> 01508 484174 <i>Email:</i> <u><a href="mailto:rector.thurtonbenefice@btinternet.com">rector.thurtonbenefice@btinternet.com</a></u>  <b>Explorers and HALOS</b> are held at Thurton Village Hall every other Friday evening. For more information please contact <b>Gary WATSON</b> Youth Worker Norwich Youth for Christ City Gates Centre, 30 Cowgate NORWICH. NR3 1SZ <b>Tel:</b> 01603 620678. 07747 471218 <b>Email:</b> gwatson@norwichyfc.co.uk	<b>Rockland Benefice</b>  <b>Revd Canon Nick Garrard</b> The Rectory Rockland St Mary NORWICH NR14 7EY <i>Tel.</i> 01508 538014 <i>Email:</i> <u><a href="mailto:nickgarr39@aol.com">nickgarr39@aol.com</a></u>  <b>Revd. Helen Garrard</b> The Rectory Rockland St Mary NORWICH NR14 7EY <i>Tel.</i> 01508 538014 <i>Email:</i> <u><a href="mailto:broadsidecurate@aol.com">broadsidecurate@aol.com</a></u>  <b>Revd Mandy Ansell</b> 44 The Street,, Rockland St Mary NR14 7AH. <i>Tel.</i> 01508 538654 <i>Email:</i> <u><a href="mailto:mandy.ansell44@gmail.com">mandy.ansell44@gmail.com</a></u>	<b>Parish Priest</b> Fr Andrew Eburne, The Presbytery, 17 Upgate, Poringland. NR14 7SH. <i>Tel.</i> 01508 494770. <i>Email:</i> <u><a href="mailto:frandreweburne@gmail.com">frandreweburne@gmail.com</a></u>		<b>Liz Bloomfield:</b> Editor, Treasurer, Adverts The Bloomfields, Nichols Corner, Church Meadow Lane, Alington, NR14 7NF <b>Tel:</b> 01508 493958  <b>Angie Yeomans:</b> Adverts, Contributions, Page Layout and Design 15 Bramerton Lodge, Bramerton, Norwich. NR14 7EQ. <i>Tel:</i> 01508 538131 ( <i>Answerphone</i> )  <b>Kind donations may be sent to one of the addresses above either by cash or cheque payable to Eleven Says. Or BACS payment to Eleven Says 20-92-08 a/c 90137065.</b> Contributions are very welcome subject to the Board's discretion and available space. <b>Deadline for all material ("copy") for the next issue is 5th NOVEMBER 2025</b> <b>Email:</b> <u><a href="mailto:elevensays22@gmail.com">elevensays22@gmail.com</a></u>  <b>Produced by:</b> Angie Yeomans  <b>Printed by:</b> Roberts & Son Printers, 2-6 Bridge Street, Loddon, NORWICH. NR14 6EZ <i>Tel:</i> 01508 520221										
		<table><tr><th>Times of Masses</th><th></th></tr><tr><td>Saturday</td><td>6 pm</td></tr><tr><td>Sunday</td><td>9 am</td></tr><tr><td>Tues</td><td>6 pm</td></tr><tr><td>Wed -Saturday</td><td>10 am</td></tr></table>			Times of Masses		Saturday	6 pm	Sunday	9 am	Tues	6 pm	Wed -Saturday	10 am
		Times of Masses												
		Saturday	6 pm											
		Sunday	9 am											
Tues	6 pm													
Wed -Saturday	10 am													
<b>Staff days off.</b>  Monday                      Revd Chris Ellis Thursday                    Revd Mandy Ansell Friday                        Revd Nick Garrard Revd Helen Garrard														
NEXT ASSEMBLY: SATURDAY 29th NOVEMBER, BERGH APTON VILLAGE HALL, COOKE'S ROAD, NR15 1AA, 9 am - 11 am (approx)														