

September 2021 75p

connected

The Parish Magazine of St Wilfrid's Brayton

*Includes news from the Local Ecumenical Partnership
at the Church of St Francis Thorpe Willoughby,
and the Methodist churches at Brayton and Burn*



www.StWilfridsParish.com

Welcome

to the September 2021 edition of *Connected*.

This month Revd. Pete Watson considers facing the challenge and discomfort of change as a blessing and a sign of God's love for us. Whilst the Ven. Revd. John Barton encourages us not to hide and allow God's love through Jesus to find us.

Derek Cooper of the Friends of Brayton Barff this month records his joy that nuthatches have found a home on the Barff; something to look out for the next time we take a stroll through the trees.

There are signs that the Parish is returning to some sort of normality; Lynn Allan reports on the Mothers Union afternoon tea that was held one gloriously

sunny afternoon in August, and I witter on about the return of the Craft Group Coffee Morning.

I have also included a short text on the Lords Prayer, with a page of colouring in for readers of all ages ☺

The Brayton Parish Website sends out notices of Services and events in St Francis and St Wilfrid's, but only to subscribers. It is easy to subscribe on the website (<http://www.StWilfridsParish.com/LatestNews>, look for the Subscribe link) so why not use this method of staying up-to-date on news in the Parish? It is of course free.

Thank you to those who have paid their annual subscriptions. If possible please pay the person

who delivers your printed copy. Printed copies of *Connected* delivered to your door cost £5 a year (£4 for pensioners), or you can pick up a single copy for 75p from any of the Churches mentioned within these pages. Subscriptions run from June each year.

You may also download *Connected* free from the St Wilfrid's website www.StWilfridsParish.com.

Articles for *Connected* are always gratefully received, by the 11th of the month please.

John Clarke 
01757 708646
js_clarke@btinternet.com

Inside This Month

#TheParishThisMonth.....	3	September Prayer	19
Dear Friends	6	Covid Update.....	20
U3A	7	St Wilfrid's Notices	21
Nuthatches	8	Methodist Clergy	22
The Lord's Prayer	11	From the Registers	22
How Wonderful Creation Is	13	St Wilfrid's Clergy.....	23
Scripture & Science	14	St Francis' Clergy	23
Repentance.....	15	Service Roster	24
Do Not be Troubled.....	16	The Directory.....	25
Mothers Union	17	When We Were Very Young.....	26
Craft Group Coffee Morning.....	18		

Grammatical Sense

If people from Poland are called Poles, then why aren't people from Holland called Holes? And isn't it lucky that Yorkie chocolate bars are not made in Goole?

#TheParishThisMonth



Blimey! I've just swallowed a chilli! The Beer & Banter 'Lads' celebrate Mike Bunn's impending nuptials, with an Indian meal at the Jinnah.



The Mothers Union Afternoon Tea in full swing!





The view from the south door at St Wilfrid's.
Thanks to Sue Beevers for the picture

Dear Friends

As some of you know, the Watson household's summer holiday destination of choice has been, for many years, a wee fishing village in the north of Scotland. One of our many favourite activities there, especially when the girls were younger, is rock-pooling, and best of all searching for and finding tiny hermit crabs! One of the amazing things about these wee fellas is that when they get too big for their shell, they

thing's for sure...change, new beginnings, are all part of life! I often hear people saying, 'Why do things have to change?' I'd be being less than honest, if I didn't admit to feeling that way too at times! But imagine if we never changed or nothing new ever happened? If we stayed the same, wouldn't life get a tad boring? I mean, imagine not learning anything new, seeing new things, visiting new places, hearing new

times of change, new beginnings, can make us feel vulnerable, make us feel unsafe at times, anxious, fearful; I'm guessing it's not an easy decision for the hermit crab to move out of the shelter of one shell before it necessarily has a new one ready to move into. But look what happens to the crab...after a few days, find a new one it does! What a clever and courageous creature indeed!

It seems to me it's like that with



leave its shelter to find a new, bigger one!

As we continue through these ever-changing times, especially as we move into the autumn, a kind of new beginning as a church community, returning, we hope, to some kind of "normality", it seems to me there's a lot we can learn from our wee friends, the hermit crabs!

Change, new beginnings, can be pretty scary or exciting; some of us love it, others don't! But one

music, taking up new interests, tasting new food, making new friends...life would pretty dull, wouldn't it?!

But, like the hermit crab, a sort of new beginning like the one we're embarking upon as a church community this autumn, is a bit like moving out of the safety of our current shell, where we're comfortable, where we know how things work, what to expect – yes, even in a pandemic! Like our wee hermit crab between shells,

us...as we move through times of change, new beginnings, no, it's not always easy, but eventually we "find our new shell", we do get used to the 'new', we adapt, growing to feel comfortable once again, safe and secure.

But you know, being people who are hermit-crab-like isn't just about saying with resignation and resentment, 'Oh alright, I'd better put up with the new beginning, the change'. No, the hermit crab knows it needs to get a bigger

shell if it is to live more fully; it seizes the moment, because it recognises the life to be found in the change. In a similar way, as we move into a new phase of this pandemic, the attitude of those wee hermit crabs challenges and encourages us to say, 'Okay, let's make the most of this new beginning. Sure, it's not like it's my ideal, but through it I'm going to grow and learn and experience lots of new things...even if it's not always easy, especially at first'. Again, I'm pretty sure it's not a simple matter for the hermit crab to abandon one shell without the guarantee of an immediate replacement. Nevertheless, it seizes the moment, it makes the change. This autumn and the months ahead give us the same opportunity to change our shells too, and find blessing and life in that.

The Bible writers knew only too well the hermit-crab-like nature of life. They knew that growth only comes through new beginnings, through change. The wonderful thing is that the Bible is full of references to their trust in the constant love of God in the midst of that change, those new beginnings. When we face our new beginnings, those times between our shells when vulnerability holds sway, when anxiety and fear threaten to overwhelm, when resentment is a false friend, the God of constant love never stops being with us, standing alongside us, offering us the shelter of his peace, his hope, his courage. In the middle of all our changes, God's love for us never changes. As we move forward together with some trepidation, let's give God thanks for our wee hermit crabs, and so grasp hold of our

new beginnings with excitement and a sense of anticipation too!

With all this in mind, I'd like to leave you with a blessing:

***As you set out on new paths,
God walk with you.***

***As you taste and see new things,
God refresh you.***

***As you move from old to new,
God's love smile upon you.***

Amen.

Rev. Pete Watson ✝



The u3a is a worldwide organization providing people in their 'third age' with opportunities to come together to take up new interests and skills and share knowledge with like-minded people for pleasure, not for qualifications. By 'third age' we mean the time when you have finished full time work or raising a family and have time to take up or resume leisure interests. In fact, we have no lower age limit for membership and people who are in part time work are very welcome.

Selby u3a was formed in 2015. As well as coming from Selby itself, our members come from Brayton, Thorpe Willoughby

and other surrounding villages. We don't have a waiting list and new members are always very welcome. Membership for 2021-22 is £18.00 with reductions for joining part year.

Selby u3a gives you opportunities to develop your interests, make friends and enjoy yourself. We have sub groups that you can also attend e.g. walking, family history, art, flower arranging, book club etc. Meetings are held on the first Wednesday of each month from 10.00am, at Selby Bowling Club, Baffam Lane, Selby YO8 9AX and are open to all members. We have talks from an invited speaker on a variety of subjects, tea and coffee

is available and there is time to chat and make new friends.

Future talks include:

1st September - Malcolm Brooke,
The background of the Baedeker Raids 1942 and York

6th October - Jeff Jacklin *The History of the NHS*

For further details call me on 01757 707987

Jan Tetley ✝

Encounters with Nuthatches

The Barff's birdlife is constantly changing. Bird species numbers can fluctuate significantly. Various factors such as weather conditions, a suitable feeding and nesting habitat, predation, even human disturbance to name but a few can determine a bird's success.

The Nuthatch is one bird species that has prospered, where many others have declined or even disappeared.

Nationally the Nuthatch has successfully spread its range from west to east across the UK over the last 40 years.

In the lower Vale of York, you would have been hard pressed to find this colourful character in the 70's and 80's.

It was not until the 16th of February 1996 that I encountered my first bird on the Barff. It was a great highlight at the time. Over the next few years Nuthatch observations increased and in 2002, breeding on the Barff was confirmed.

Now in 2021 we have roughly 6 pairs breeding around the Barff Woodland but initially this cheeky chap relied on help to increase its numbers from a human source.

Over 25 years ago, one of the Barff's owners, Yorkshire Water supplied me with quite a few birdboxes.

They ranged from Treecreeper, Blue Tit, Great Tit and Spotted Flycatcher boxes. They were all different to suit a particular breedingbirdspeciesrequirement.

What they all had in common was the material that was used to make the boxes. It was a hard, tough concrete composite material, rather than wood. This meant that the boxes would last many years and even now are still being used by various birds'

species around the woodland.

The first breeding Nuthatch discovered the smaller Blue Tit boxes and attempted to use them.

In size the Nuthatch measures 14cm in size. The same size as a Great Tit. The smaller Blue Tit measures 12cm.

“This did not stop the Nuthatch!

So the smaller Blue Tit boxes with its entrance hole can only accommodate this species and nothing larger like the Nuthatch or Great Tit.

This did not stop the Nuthatch!

Its sheer determination to gain entry through the small entry hole had to be admired. He was able to peck away at the concrete around the entrance hole and make it wide enough to gain access to the small cramp interior that was suitable only for the smaller Blue Tit.

The power and strength in the Nuthatches bill, to peck away concrete, to me seems utterly amazing but over the next few years they managed to do this to nest in at least 6 other similar Blue Tit boxes.

Of course, this was to the detriment of the smaller breeding Blue Tits and once inside, the larger Nuthatch was rather restricted in its normal nest building construction, due to the smaller size of the interior of these concrete birdboxes.

It was still satisfying to know that these boxes helped to establish the Nuthatch as a resident bird around the Barff

Woodland and now there is evidence that they have now moved onto using more natural holes in the Oak and Birch trees of the woodland.

The Nuthatch begins singing in late January and has several distinct noisy variations on a song that can be heard through the wood until nesting begins in mid to late April. I have noticed that once they begin feeding their young into May, they decrease their singing, possibly as not to give away their nesting location.

They often line their entrance holes with mud and saliva to allow only them access and not larger birds like the Great Spotted woodpecker. Interestingly I have also seen them do this on a Concrete Spotted Flycatcher box which has a larger open entrance that usually would suit the Flycatcher.

If you visit the Barff, you can often see or hear the Nuthatch around the Car Park. They often taking advantage of the Bird Feeders nearby. It is the only UK bird that can hop down tree trunks as easily as it hops up them.

For me it is always nice to see this colourful and quite vocal bird with all its character and personality. Hopefully it will continue to thrive around the ancient Barff woodland for many years to come.

Derek R Cooper †

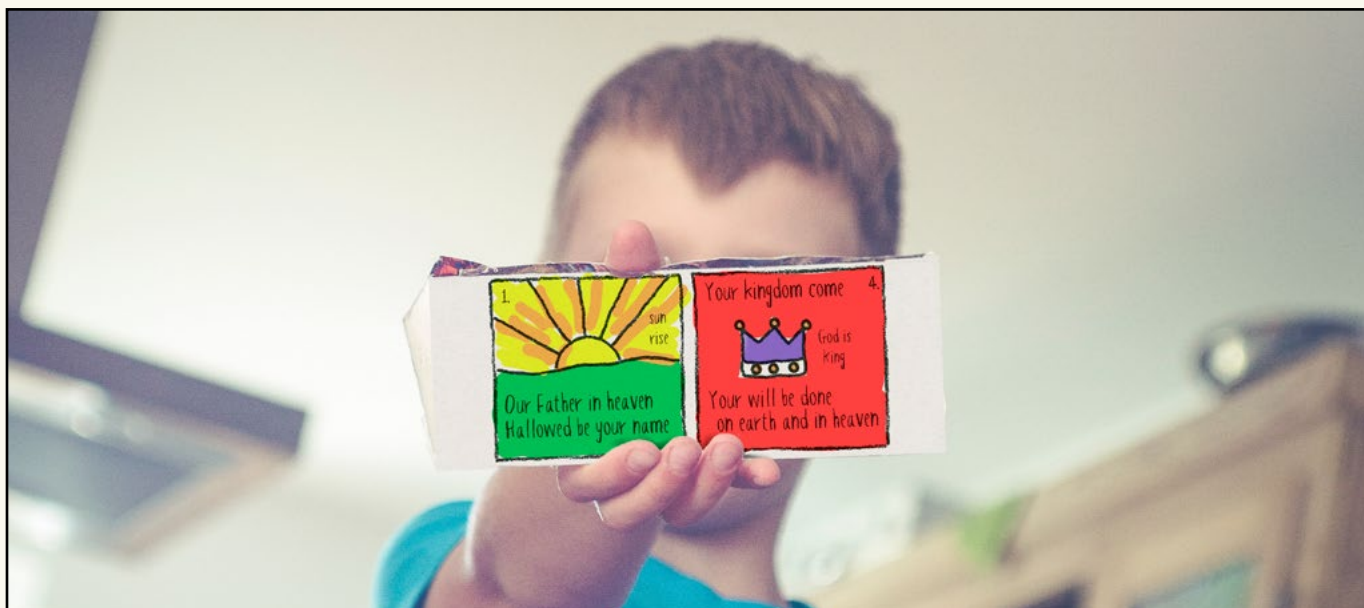
Friends of Brayton Barff

Images by Derek Cooper





Our Father in Heaven



Every funeral service that I have attended always includes the *Lord's Prayer* even if it isn't printed in the Order of Service. It is a part of the service involves everyone, and everyone knows how to respond.

The family and friends of the deceased person are usually of an age that they would have been taught the *Lord's Prayer* at school. (I certainly was, and I can still remember my surprise at the meaning of 'trespass'

within the context of the prayer: amazingly it had nothing to do with playing football on the grass in front of Newark Castle.) Yet the majority of people attending the funeral are probably not regular church goers but saying this childhood prayer helps them feel included even if much of the liturgy is unfamiliar. I wonder what will happen when today's schoolchildren attend a church funeral service in years to come? How many of them will be able

to join in the *Lord's Prayer* without having a copy in front of them? Just because **we** know The Lord's Prayer by heart let us remember that generations are now growing up without this special gift from Jesus unless they attend church. We can't rely on schools teaching such an essential fundamental of our Christian faith.

John Clarke ✝

Lord's Prayer Cards

Children might like to create their own Lord's Prayer Cards using the illustrations on page 12!

1. Using bright pencils or crayons colour in the different cards
2. Cut them out
3. Place them in order
4. Talk about the meaning of the different cards!

The Lord's Prayer

1.



sun
rise

Our Father in heaven
Hallowed be your name

4.

Your kingdom come



God is
king

Your will be done
on earth and in heaven

2.

Give us today our
daily bread



ciabatta bread

5.

Forgive us our sins



love everyone!

as we forgive those
who sin against us

3.

Lead us not into
temptation



HV vest
to keep us
safe

but deliver us from evil

the power and the glory
are yours for ever



For the kingdom
and ever. Amen!

Idea borrowed from FlameCreativeKids. Bless you and thanks!

God in the Arts

There is a story that someone asked a Father of the early church, Tertullian, to prove the existence of God.

He replied by showing the person a rose. But Tertullian took a risk, for while many appreciate the beauty and wonder of a rose, it is not everyone who sees that beauty pointing to God as its creator.

In one of his hymns, Fr Faber wrote: *'How wonderful creation is, The work which thou didst bless, And O! what then must Thou be like – Eternal loveliness.'* A rose can speak of beauty and speak of God to some; to others a rose is just another flower in the garden. William Blake wrote, *'The tree which moves some to tears of joy is in the eyes of others only a green thing which stands in the way.'* We know that only too well when forests are cut down in the name of progress, and trees that have stood for centuries are hewn down in a moment.

This month's work of art is 'A Hill Prayer' by Maxfield Parrish: it shows a man standing in a forest of venerable and imposing trees, and the hills stretching out behind him. Maxfield Parrish was an American artist, who created paintings of brilliant colour and luminosity. The particular cobalt he used was known as 'Parrish blue.' Much of his work was for illustrations in books and magazines and in advertising. But here is an early drawing of 1897, based in a New England forest, that has a haunting quality about

it. He drew it to accompany a poem of Marian Warner Wildman where the writer goes into the forest to escape the doubts and worries of the world and to find

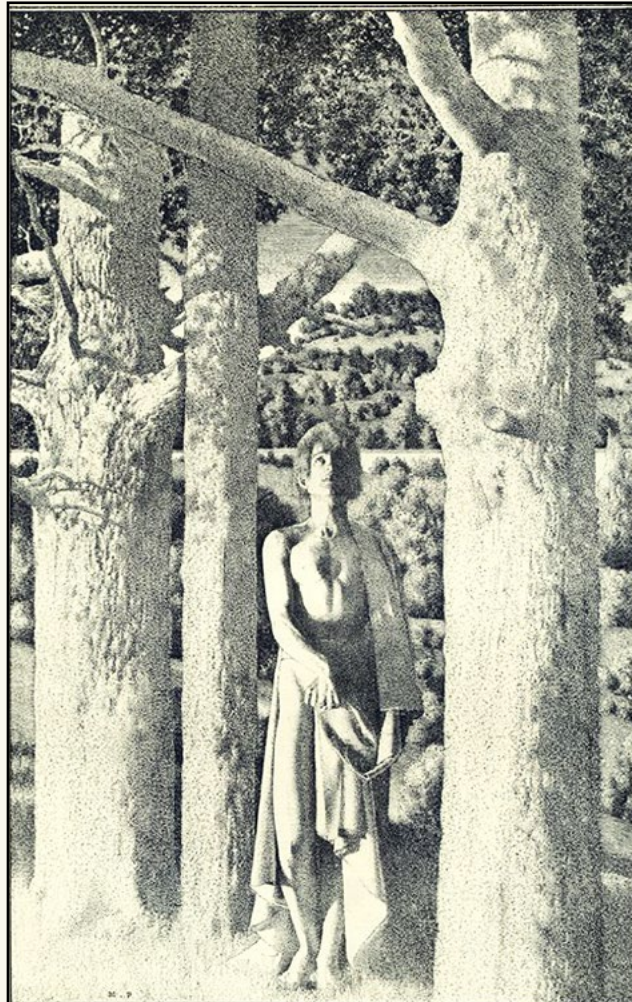
around us. In their beauty we can glimpse their Creator; in the miracle of their life, we can see the bringer of life and eternal life. For scripture begins with

trees: the tree of life and the tree of the knowledge of good and evil with the story of how human pride exchanges paradise for hard work and toil.

But the final pages of the Bible describe that tree of life once again: this time arching over the river that runs through the heavenly city with leaves that bring healing and restoration. And bridging that tree of Genesis and the tree of Revelation is the wood of the cross: 'None in foliage, none in blossom, none in fruit thy peer may be.' In that tree we can truly glory.

Autumn will soon be with us, and the magnificence of the trees around will fade as their leaves fall and are swept away. After the death of winter, spring will come and bring the miracle of new life to their roots and branches, and once

again we can behold their glory, like the traveller in the forest of Maxfield Parrish's drawing – trees that remind us of 'the one and only noble tree': the Cross that is the sign of salvation for all seasons and all lives.



Maxfield Parrish's illustration for A Hill Prayer by Mirian Warner Wildman, Century Magazine, December, 1899

release and peace. It ends with the lines:

*"I love thee with a beauty -
broken heart
And worship thee, be whatever
thou art."*

The drawing may evoke for us memories of forests and countryside we have explored, with trees towering above us, reaching to the sky, their leaves rustling in the wind and letting shafts of sunlight through. Like the artist, we may have wondered at their age and beauty and pondered the mystery of creation

Rev. Michael Burgess ✝

God in the Sciences

Faithful to Scripture, Faithful to Science: Alister McGrath on science and Christian faith

Alister McGrath is well-known as a theologian, but he started out as a scientist. After becoming a Christian as a student, he wanted to learn about his new faith so he studied theology at the same time as completing his PhD in molecular biophysics. He has not lost touch with science, but has continued to write and speak about how science and Christian faith work together. In this extract from a recently released interview, he shares his experience of being a scientist and a Christian.

“I think my most vivid experience of wonder took place in the 1970’s when I was on vacation in Iran. We were travelling on a bus in the middle of the night because it wasn’t hot then, and the bus broke down. We found ourselves in the middle of this solemn black desert, and the night sky shone with a brilliance like I had never seen before. That just overwhelmed me, it made me think there is something really wonderful here.

“Now, I was a Christian by that time and I knew how Christianity could answer that but it just struck me, that sense of wonder has two possible outcomes. One is science - this universe is wonderful, what’s it all about? But of course, it is also about religion, the deeper levels of things that science can’t really engage. I think one of the

things I have discovered over time is that maybe this sense of wonder both opens the gateway to science and to faith, and that those two together are able to

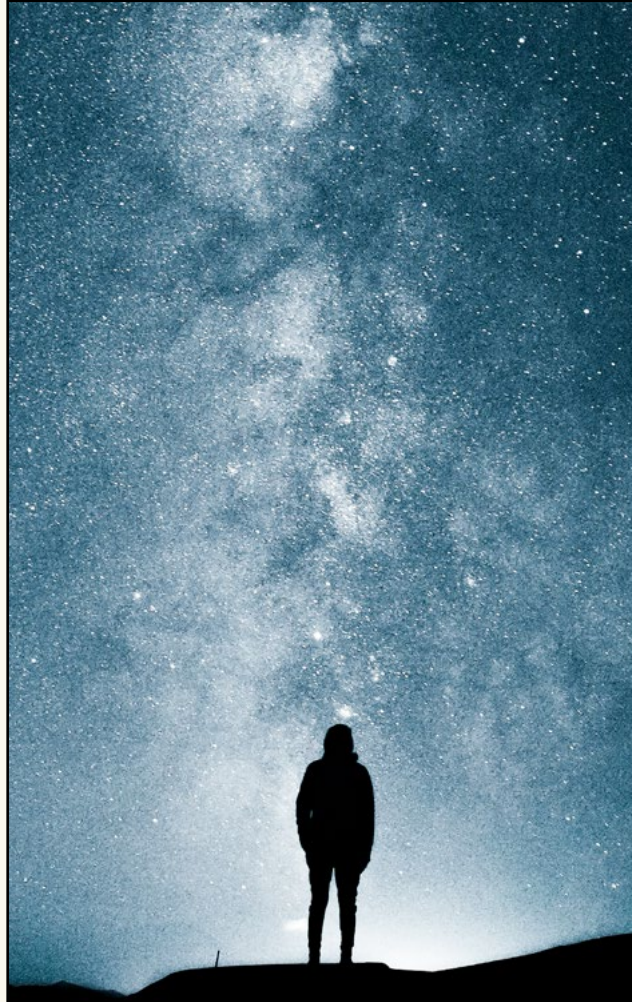


Image by Usukhbayar Gankhuyag on Unsplash

answer questions which on their own they simply couldn’t.

“I think science is wonderful at asking questions. Some of those questions can be answered, but very often when you do answer them, they simply open up yet more questions. But of course, there are some more fundamental questions I think science simply cannot answer - they transcend its capacities to answer, and you might think of non-empirical questions like, ‘Why am I here? What is the meaning of life? What is good and how do I live a good life?’

“These are real questions and they’re good questions but they’re not scientific questions. And the psychologists tell us that we really need answers to those questions if we are to lead a fulfilled human existence. You find some scientists who say, ‘Well because science can’t answer them there are no answers to be given’, but actually most realise that there are answers waiting to be discovered - it’s just that science can’t deliver them.

“Science fills in part of a big picture but there are parts of the picture you have to fill in from somewhere else. Science is part of the answer but only part, and faith supplements it, giving us a vision of life that is exciting and reliable, and also something that we can inhabit meaningfully.”

Find more on wondersofthelivingworld.org

Dr Ruth M Bancewicz



Church Engagement
Director at The
Faraday Institute for
Science and Religion
in Cambridge

Repentance

Lord God,

take pity on me.

During my infancy I ignored You;

During my boyhood

I had no interest in You.

During my adolescence

I pursued vain pleasures.

But now, Lord Jesus,

I crave Your mercy.

I want to know You,

I want to understand Your truth,

I want to feel Your joy.

Richard Rolle (c 1300 – 1349)

A hermit who lived in Yorkshire

Let Jesus Christ find you

Jesus said, 'Do not let your hearts be troubled. Believe in God, believe also in me. In my Father's house there are many dwelling-places. If it were not so, would I have told you that I go to prepare a place for you? And if I go and prepare a place for

In the meantime, humanity is invited to stop, turn round, and face God who is in pursuit. 'Turning round' is what 'repentance' means.

Becoming a Christian is letting Christ find us; being a Christian

come again and will take you to myself, so that where I am, there you may be also."

For the disciple, death is a union - a reunion with Christ. It's the most natural thing in the world. So, we pray that at our end, we



you, I will come again and will take you to myself, so that where I am, there you may be also.' John 14:1-6

We come to church regularly to meet God. But actually, God comes to meet us. He comes to us personally though His Word; and in Holy Communion, Jesus arrives under cover of bread and wine, saying 'this is My body; this is My blood'.

The whole Bible is the story of God searching for us, not the other way round. It begins with Adam and Eve running away and hiding, and that's how it continues to this day. But it ends with a dramatic vision of reunion.

is becoming an apprentice in His workforce.

Not long before His crucifixion, Jesus taught His apprentices about His death - and theirs. "I'm going to prepare a place for you, and I will come again and take you to myself, so that where I am you may be also."

When we contemplate dying, it may seem like a journey into the dark. But we will not go alone. Never alone. As we reach out into the darkness, Christ is reaching out to us. Just as He has been reaching out to us throughout our lives, so He is there to grasp us as we breathe our last. "I will

may reach out into the darkness, to find we are grasped by the One who has already prepared a place for us.

The Ven John Barton



Normality re-emerges

The signs that the covid lockdowns are coming to an end was obvious over the second week of August. On Thursday 12th Lynn & Mel Allan hosted an MU Afternoon Tea, and

on Saturday 14th the St Wilfrid's Craft Group held a Coffee Morning in the the Parish hall. It was lovely to see so many familiar faces after so long in semi-isolation.

I am pleased to include reports on both events; long may the reinstatement of normal service continue!

Mothers' UNION

Christian care for families

On Thursday 12 August we hosted an afternoon tea in aid of the Mothers' Union. We were blessed with gloriously sunny weather and around 30 people enjoyed scones and cakes in our garden.

In total we raised £215. A small amount, £15, will go to top up our almost non-existent Branch Funds and the remaining £200 to the MU Summer of Hope Appeal, supporting the ongoing work of women in leadership roles across the world, enabling women to improve the lives of families of all kinds worldwide.

2021 marks the 145th anniversary of Mothers' Union brought to life by Mary Sumner's vision of women supporting families and communities. This summer we also mark 100 years since she died after a truly remarkable and inspiring life.

Mary Sumner led a breakthrough for women, whose role during her lifetime was chiefly to give support to male leaders in the Church, work, and society. Her vision was a world where women's voices were heard and their own rights recognised.

Thanks to everyone who supported the event.

Lynn Allan ✝





On Saturday 14th August Mrs Clarke and I went along to St Wilfrid's to tidy the Churchyard ahead of Linda Nash & Mike Bunn's wedding to be held the following Saturday. So what a splendid surprise it was to discover that the Craft Group was also holding a coffee morning! Particularly since the last time that we had a brew to sustain us whilst pulling out brambles was in February 2020...

Organiser Linda Crackles had advertised the event in *Connected*, and through the Craft Group, but I think that we were all surprised by how well it was attended. People are not so reluctant to come together after covid as expected.

All of the usual elements were present - good company, coffee & tea, excellent cakes, crafts and the ever popular raffle. The event was well attended.

Ann Whike organised the raffle and Brian did the honours in drawing the winning tickets in between popping out for a newspaper.

In total £248 was raised for church funds, and many thanks to Linda Crackles for having the courage to restart the Craft Group Coffee Mornings and showing what can be achieved.

John Clarke †



September Prayer

Dear Lord,

September – the month of new beginnings for many, as summer fades and school and college terms start.

After such a strange time of restrictions, hopes of freedom, with warnings to be cautious, it is hard to know what to expect this September.

We can't know what lies ahead, Lord, but we can trust you to see us through whatever it turns out to be.

Thank you for your promise, I will never leave you or forsake you...
(Hebrews 13:5)

Help us to hold fast to that promise, to keep trusting you - and to be thankful for each September day.

In Jesus' name. Amen.

Daphne Kitching

The Test of a Civilization is the Way that it Cares for its Most Vulnerable Members

American writer and novelist Pearl Buck (1892-1973)

As we move forward as a nation, local community and church family, the Bishop of Selby and his fellow York bishops are asking us to do so based on the Biblical principle of **compassion for others**; that we **“bear one another’s burdens, and so fulfil the law of Christ”** (Galatians 6.2), and **must not allow our own liberty to be the cause of other’s stumbling** (1 Corinthians 8.9; Romans 14.21).

In other words, whilst there will now be fewer hard and fast rules, it will be a loving service to others if, for the time being, we find ways to act more cautiously than might suit our own personal convenience and preferences.

Here at St Wilfrid’s we are inspired by these words, and believe this church building should be a place where everybody feels safe.

We therefore urge you strongly to continue to wear a mask or other face covering, and maintain socially distancing, if at all possible.

The back pews in the central nave area are reserved for those who wish to remain socially distanced.

Please ask our welcomers to direct you there.

With grateful thanks

Revd Pete Watson (Rector) and Mrs Pat Jarvis (Churchwarden)

St Wilfrid's Notices

Changes to the Service Pattern at St Francis & St Wilfrid's from September

This will look more or less the same as pre-pandemic, but with some changes due to significantly limited clergy personnel and their availability. Sunday morning times will revert to the 10:30am start

Sunday	St Wilfrid's	St Francis
1st Sunday		
10:30am	Lay Led Morning Prayer	Holy Communion (with prayer for healing)
12:30pm	Baptism	
5:00pm	Inspire	
2nd Sunday		
8:00am	Holy Communion	
10:30am	Family Communion	Methodist Led Service
3rd Sunday		
10:30am	Joint Parish Celtic Communion: alternating monthly between the 2 churches	
4th Sunday		
8:00am	Holy Communion	
10:30am	Holy Communion (Both with prayer for healing)	Lay Led Morning Worship
5th Sunday		
10:30am	Joint Parish Holy Communion: alternating between the 2 churches as pre pandemic.	

Whatever is the final Sunday of the month (4th or 5th): 5:00pm Alive@5

St Wilfrid's Wednesday 9:30am & St Francis Thursday 10:00am Communion services will resume from the beginning of September.

Zoom Morning Prayer on Wednesdays will end at the end of August.

Pete Watson, and for Christine Gillespie ✝
And on behalf of the PCC and ECC



From the Parish Registers

Weddings

We offer our congratulations to:

21st August

Jessica Baker and Nicholas Wrigley

Linda Nash and Mike Bunn

24th August

Sam Johnson and Tom Hudson

Funerals

We offer our love and sympathy to the relatives of:

19th August

Jack Haynes at York Crematorium

Church Floodlights

The Church will be illuminated on:

19th September

In Loving Memory of Ann Margaret Hind

If you would like the church illuminated to celebrate a birth, baptism, birthday marriage, anniversary, or the life of a loved one please contact Pat Griffiths on 01757 705793



Methodist Clergy

Brayton and Burn Methodist Ministers

Rev. Philip Macdonald 1 Olive Grove, Goole, DN14 5AD

philipmacdonald@tiscali.co.uk (01405 765154)

Rev. Peter Barnett 5 Lynwith Close, Carlton, Goole, DN14 5RR

revpb@revpb.karoo.co.uk (01405 869701)

St Wilfrid's, Clergy & Officers

Clergy

Rev. Pete Watson	The Rectory, Doncaster Road, Brayton, YO8 9HE	(01757 704707)
Rev. Rodger Place	rodgerplace17@gmail.com	
Rev. Roy Shaw	revroyshaw@protonmail.com	
Rev. Paul Finlinson	p.finlinson@outlook.com	

MULTIPLY 20s-40s Leader

Rev. Rob Suekarran	rpsuekarran@gmail.com	(07901 359208)
--------------------	-----------------------	----------------

Reader

Jackie Jackman	porgles.pogs@icloud.com	(01757 706475)
----------------	-------------------------	----------------

Church Warden

Pat Jarvis	churchwarden@stwilfridsparish.com	(01757 708881)
------------	-----------------------------------	----------------

Ministry Team

Mel Allan	(01757 706068)
Lynn Allan	(01757 706068)
Sue Beevers	(01757 229515)
Pat Griffiths	(01757 705793)
Joan Howden	(01757 700942)
Sheila Newsome	(01757 705497)
Claire Nutt	(01757 712206)
Carol Sowden	(01757 703590)
Gordon Tute	(01757 707123)

Sacristan

Sheila Newsome	(01757 705497)
----------------	----------------

Officers

PCC Secretary

Ruth Breeze	(01757 701911) ruthie5611@hotmail.com
-------------	--

Treasurer

Jill Clarke	(01757 708646)
-------------	----------------

Electoral Roll Officer

Margaret Seager	(07840 817005)
-----------------	----------------

Junior Church

Martha Harrold	(01757 291254)
----------------	----------------

Friday Fun Club

Cathy Rodgers	(01757 704303)
---------------	----------------

Parish Safeguarding Representative

Cathy Rodgers	(01757 704303)
---------------	----------------

Craft Group

Linda Crackles	(01757 704944)
----------------	----------------

Mothers Union

Lynn Allan	(01757 706068)
------------	----------------

Book Club

Rosalind Wilson	(01757 708856)
-----------------	----------------

St Francis' Clergy & Officers

Clergy.Thorpe Willoughby Methodist/Anglican Church

Rev. Christine Gillespie	24 Tomlinson Way, Sherburn in Elmet LS25 6EQ	gillespiec39@gmail.com	(01977 682695)
Rev. Pete Watson	The Rectory, Doncaster Road, Brayton, YO8 9HE		(01757 704707)
Rev. Rodger Place	rodgerplace17@gmail.com		
Rev. Roy Shaw	revroyshaw@protonmail.com		
Rev. Paul Finlinson	p.finlinson@outlook.com		

(The Revs. Rodger Place, Roy Shaw, and Paul Finlinson have the Archbishop's permission to officiate and we are very grateful for their help in the parish)

Reader

Jackie Jackman	(01757 706475)	porgles.pogs@icloud.com
----------------	----------------	-------------------------

Officers

ECC Secretary

Jan Tetley	(01757 707987) tetleyjan@gmail.com
------------	---------------------------------------

Treasurer

Reginold George	regi-george@hotmail.co.uk
-----------------	---------------------------

Electoral Roll Officer

Shirley Croft	(01757 707380)
---------------	----------------

Child Protection Representative

Jan Tetley	(01757 707987) tetleyjan@gmail.com
------------	---------------------------------------

Church Coordinator

Shirley Croft	(01757 707380)
Rosemary Finlinson	

Service Roster

You are more than welcome to join us in any of the Services in September below

St Wilfrid's

Wednesday 1st Mothers Union

9:30am Holy Communion in St Wilfrid's

Sunday 5th Trinity 14

10:30am Lay-led Morning Prayer in St Wilfrid's

12:30pm Baptisms in St Wilfrid's

5pm Inspire in St Wilfrid's Hall

Tuesday 7th

10:30am Holy Communion in Fernbank Court

Wednesday 8th

9:30am Holy Communion in St Wilfrid's

Sunday 12th Trinity 15

8:00am Holy Communion in St Wilfrid's

10:30am Family Communion in St Wilfrid's

Monday 13th

10:30am Holy Communion in St Wilfrid's Court

Wednesday 15th

9:30am Holy Communion in St Wilfrid's

Sunday 19th Trinity 16

10:30am Joint Parish Celtic Communion in St Wilfrid's

12:30pm Baptisms in St Wilfrid's

Wednesday 22nd

9:30am Holy Communion in St Wilfrid's

Sunday 26th Trinity 17

8:00am Holy Communion with Prayer and Anointing for Healing in St Wilfrid's

10:30am Holy Communion with Prayer and Anointing for Healing in St Wilfrid's

5pm Alive@5 in St Wilfrid's Hall

Wednesday 29th

9:30am Holy Communion in St Wilfrid's

Thursday 2nd

10:00am Holy Communion in St Francis

Sunday 5th Trinity 14

10:30am Holy Communion with Prayer and Anointing for Healing in St Francis

Thursday 9th

10:00am Holy Communion in St Francis

Sunday 12th Trinity 15

10:30am Methodist led service in St Francis

Thursday 16th

10:00am Holy Communion in St Francis

Sunday 19th Trinity 16

10:30am Joint Parish Celtic Communion **now in St Wilfrid's**

Thursday 23rd

10:00am Holy Communion in St Francis

Sunday 26th Trinity 17

10:30am Lay-led Morning Worship in St Francis

Thursday 30th

10:00am Holy Communion in St Francis

Brayton

Sunday 5th

10:30am Morning Worship

Sunday 12th

10:30am Morning Worship

Sunday 19th

10:30am Morning Worship

Sunday 26th

10:30am Harvest Festival

Burn

Sunday 5th

10:00am Morning Worship

Sunday 12th

10:00am Morning Worship

Sunday 19th

10:00am Morning Worship

Sunday 26th

10:30am Morning Worship at Hambleton

Thorpe Willoughby

Sunday 12th

10:30am Morning Worship with Holy Communion



Health and Wellbeing

Gentle Movement

Mondays 2pm–3:45pm
St Francis' Church

Sitting down exercises for all ages and for your own capabilities; free but donations accepted for Church funds. We are a warm friendly group, so why not come and join us; or come for company, coffee and cake! More information from me on 07821 257923. *Jean*

Crafty Folks

St Wilfrid's Craft Group

Tuesday 14th & 28th September
1:30pm–4:00pm St Wilfrid's Parish Hall

If anyone wants to join us they are welcome to come along with their latest project, join in the chatter and enjoy a cuppa from 1:30pm. No need to contact me beforehand. *Linda*

Churchyard Tidying

Saturday 25th September
9:30am–12noon St Wilfrid's Churchyard

Get close to nature and help tidy the Churchyard! Hopefully tea & coffee, plus biscuits at mid-morning will restart soon! Finish about 12noon. Everyone welcome! *John & Jill*

St Francis Crafters

Wednesdays 2pm–4pm
St Francis Church

We meet every Wednesday to knit, sew, crochet, craft and natter. Everyone is welcome, from beginners upwards, or if you just want to chat with a friendly group of people. Contact me for more information on 01757 703892. *Margaret*

One Lump or Two?

Coffee Morning

Saturday 11th September
10:00am–11:30am St Wilfrid's Parish Hall

Tea, coffee and cakes, raffle and craft items for sale. The numbers are limited so call me on 01757 704944 by 10th September to reserve a place. The following Coffee Morning will be on Saturday 9th October. *Linda*

Coffeemates

Wednesday 29th September
10am - 12noon St Wilfrid's Parish Hall

Come along and join us for tea, coffee and homemade cakes. Meet your friends, and make new ones! We look forward to greeting you again. *Lynn*

Women Matters

Thorpe WI

Thursday 9th September
From 7:30pm St Francis Church on Fox Lane

Meetings are now on again! At our next meeting Angela Beaumont will speak about "By Bus from London to Kathmandu". Further details from Rebecca (07771 3648170) or Lindsay (01757 290975)

Mothers' Union

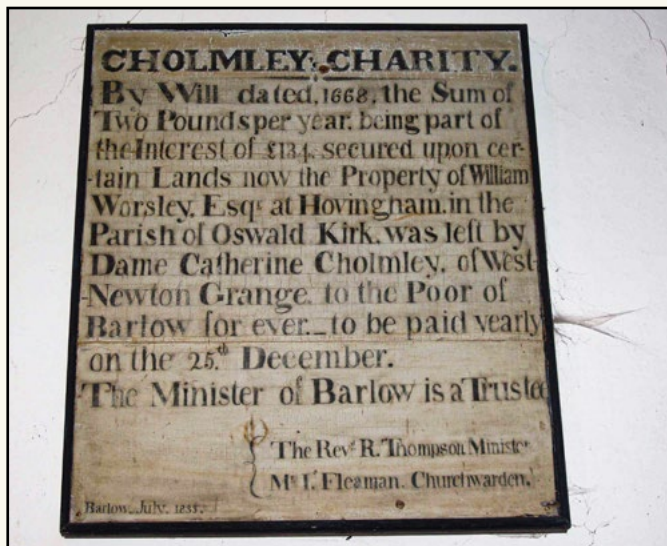
Thursday 9th September
2pm St Wilfrid's Parish Hall

There will be a service for the Lifting of the Covid Restrictions, plus informal discussion time with Diocesan President Hilary Castle who will be bringing cards to sell for MU. *Barbara*

When We Were Very Young

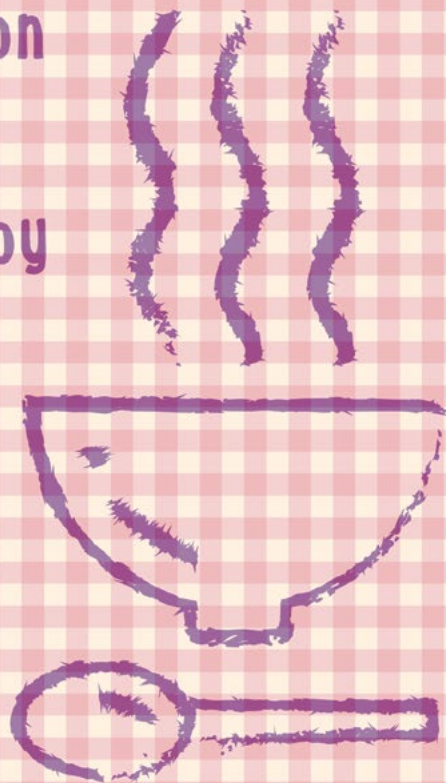
Some more random photographs from Tony Williams' archive this month. Two pictures of the former chapel at Barlow, some folks waiting to be watered, some happy people with too much

water, the choir looking particularly pleased with themselves, and a post-service catchup at St Francis. Parish life is so varied and so very wonderful!



Community Lunch Returns!

The Lunches will recommence on
Wed. 6th October 12noon to
1:30pm in the Parish Hall. Enjoy
good company plus soup &
dessert for only £4. Booking
essential – please contact Pat
on 01757 705793 by Fri. 1st
October to reserve a place.



Gentle Movement Exercises for All Ages

Relax and improve your flexibility in a warm, calm, and friendly environment.

We meet every Monday from 2pm
at St Francis Church, Fox Lane
Thorpe Willoughby

Why not come along and try it for yourself?
More information is available from Jean
(07821 257923)

The cost is free, but donations to
the church are welcome.

