



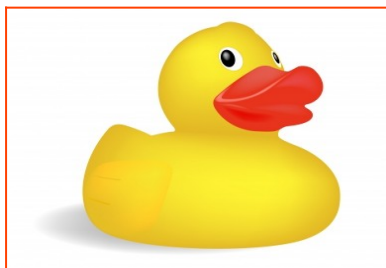
Upper Coquet Resource Group COMMUNITY NEWSLETTER JULY & AUGUST 2026



Supported by

FINAL CALL:

The Upper Coquet Resource Group Duck Race SUNDAY 28th JUNE – 12 Noon at Shilmoor



£2 per duck

£50 first prize

£30 second prize

£20 third prize

Please help us to sell all of the ducks for this year's race.

Please buy your entries from:

The Star Inn, Harbottle or Rose & Thistle, Alwinton

or

UCRG Committee members:

***Margaret Ward, Bessie Rogerson, Tracey Boldy, Gail Johnston,
Pauline Burke, Billy Gibson, Simon Taylor & Susan Rogerson***

All proceeds to the Upper Coquet Resource Group

The UCRG have been raising money to help fund local groups and activities for over 30 years. Details of their past activities can be found near the end (p34) of this monthly newsletter – another of their long standing contributions to local valley life. Funds are raised via the sale of calendars leading up to Christmas, monthly quiz sheets, donations and the annual duck race.

We are grateful for every penny as it enables us to continue adding to valley life around the Upper Coquet.

Just in case....if the weather isn't kind and the river is too fast or too shallow, the race may either be relocated to an area lower down the valley with more water on the same date, probably nearer Alwinton/Harbottle or a draw will be made if the race needs to be cancelled. ***Please check the local Harbottle Facebook page and Alwinton village noticeboard on 28/06/26 for any update in case of cancellation or relocation.***

THANK YOU FOR YOUR SUPPORT

Newsletter Circulation

It is great that we are still welcoming new names to our circulation list. Please can we ask you to continue to spread the word so that everyone knows and can sign up to the blind copied circulation list by contacting Tracey on the email below. Plus, if you are able to print a copy to share with someone without internet then thank you. Items for the newsletter can be sent in electronic form ahead of the monthly submission deadline to Tracey Boldy via stickypud@harbottle.net

Planned 2026 dates: submission deadlines with electronic distribution by the end of each month are:

<u>Issue</u>	<u>Wednesday Deadlines</u>	
September	19/08/26	
October	23/09/26	
November	21/10/26	
December/January 2027	18/11/26	DOUBLE ISSUE

The UCRG monthly quiz sheets you may see in various outlets can be purchased for the year ahead. They are coordinated by Margaret Ward (01669 650317) and they have been a fantastic steady way to boost our funds over the years. We continue to be grateful to Margaret and all those who regularly support this fun activity.

Harbottle School Community Group: Supporting Our Local School

We welcome anyone from the school and local community to come along and help. No set times so it can be daytime or weekends, an hour or a morning whatever suits. Jobs could include weeding, bed clearing, tying back, tidying, painting etc.

So if you enjoy a bit of gardening in your spare time and would like to join us to look after our local school gardens, then please contact Margaret Ward for more information (01669 650317).

Harbottle School Community GROUP continues to collect and sell both new and pre loved puzzles, be they 300-2000 pieces. XL piece jigsaws are especially popular. Funds raised go towards the group's endeavours to help pay for the annual ground rent for the top field so that the school children and community have access to a green space for playing, plus covering the costs of refreshing the planters. Other past efforts have included supporting getting the school Bistro off the ground, out of school clubs, craft classes, and sending out the bat signal for locals and businesses to gather to maintain the school grounds e.g. maintenance, painting, gardening, tidying, gravel installation.....all help always very much appreciated.

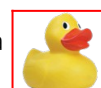
Should you wish to purchase/donate jigsaws, please contact Tracey Boldy, Pauline Bickle, Ann Hennessy or Margaret Ward. We have also tried our luck at selling online and this is proving a popular way to bring in additional income for the group.

NEW: And from all at the UCRG:

Thank you to all who submitted pieces and help to distribute this community newsletter. It all helps to share news, activities and opportunities up and down the valley and support the UCRG Newsletter's aim to help the valley communicate. We are always on the lookout for items to include from recipes, local activities, local successes, nature watch, items for sale/available/sought, local history etc.



Please don't forget that this is a double issue covering both July and August. Our next one will be for September, with the deadline for submissions set as Wednesday 19th August. In the meanwhile why not pick a few of the local events advertised and give them a whirl; your support would be much appreciated. **And please support our Duck Race by helping make every duck count and enable us to continue supporting local good causes.**



We wish all the very best to all of our local youngsters who are moving on to new schools, places of work or further study. Enjoy your well-earned breaks over the summer and remember...


"It is absolutely still possible to make a difference."
Michelle Obama

"Go into the world and do well, but more importantly, go into the world and do good."
Minor Myers JR.

Until next time, have a great summer.
Take care

SAVE SOME DATES

Further details for each event plus many more are detailed in the articles within this newsletter. Enjoy.

Forever Yung Dance: Ongoing cycle of lessons, always welcoming both beginners and those with dance experience. Lots of fun and great instruction. Ballroom/Latin Line dance lessons on Wednesday mornings plus ballroom/salsa on Friday evenings. First dance, Father/Bride dance and 1:1 tuition also available (p 13/15). 

Coquettale Creatives: Thursday 25th June, 7pm at Rothbury Golf Club: Evening of entertainment, tickets £10/£5 (p20).

Social Dance: Saturday 27th June, Harbottle Village Hall: Around the World with half hour Salsa workshop (p15) 

Repair Cafe: Saturday 27th June, 10am-2pm, Jubilee Hall, Rothbury (p21).

UCRG Duck Race: Sunday 28th June, 12 noon at Shilmoor. Fund raising for the UCRG (p1).  

Cafe Church: Sunday 28th June, 3.45-5pm, Harbottle Village Hall. All welcome (p13,33)

Fashion Show: Friday 3rd July, 7pm at Rothbury Golf Club. In aid of Hospice Care North Northumberland (p29).

The Star Inn, Harbottle: Saturday 4th July, from 8pm: Acoustic Music Night in the bar (p14) 

Craged Farm: Tuesday 7th July, 2 – 3.30pm: The Tree Trail (p28) 

Hepple WI: Thursday 9th July: Angeline Schofield, Chinese Cookery Demonstration Competition: Chinese Item (p7)

Netherton Garden Club: Thursday 9th July: Day trip to Abbotsford House and Gardens, Kelso. £25 pre-book (p6).

The Star Inn, Harbottle: Saturday 11th July, 8pm: Live music with Ten Bob Blind (p14) 

Rothbury Music Festival: Friday 10th – Sunday 12th July: A modern welcoming celebration of traditional music at various venues around Rothbury (p29).

Open Garden: Sunday, 12th July, 12-4pm: at Trew hitt Hall, Thropton (p18).

The Star Inn, Harbottle: Saturday 18th July, from 7.30pm: Cheviot Folk Night in the Courtyard Barn (p14) 

U3A, Rothbury: Monday 20th July, 10am: Nick Lewis: The Cultural Significance of The Farne Islands (p19)

County Councillor Surgery Tour: Monday 20th July, Rothbury Library. “Here to listen & help.” Pre-book appointments (p22).

County Councillor Surgery Tour: Friday 24th July, Rothbury Library. “Here to listen & help.” Pre-book appointments (p22).

County Councillor Surgery Tour: Saturday 25th July: Glanton, Whittingham, Netherton, Alwinton and Harbottle: “Here to listen & help.” Pre-book appointments (p22).

Music night & BBQ: Saturday 25th July, 6pm at Alwinton Church: £10 Ticket (p9,31,32).

Cafe Church: Sunday 26th July, 3.45-5pm, Harbottle Village Hall. All welcome (p13, 33)

County Councillor Surgery Tour: Saturday 1st August: Thropton, Hepple and Elsdon. “Here to listen & help.” Pre-book appointments (p22).

Village First Aid: Saturday 1st August, 9am until mid afternoon at Harbottle Village Hall: Free first aid course with St John’s Ambulance, open to all ages, please sign up (p12).

Powburn Show: Saturday 1st August: Powburn NE66 4JE (p27)

The Star Inn, Harbottle: Saturday 1st August, from 8pm: Acoustic Music Night in the bar (p14) 

SAVE SOME DATES continued

- Glanton Show:** Saturday 8th August: Glanton Show Field NE66 4AL (p27)
- Coffee & Sale:** Saturday 8th August, 10-12 noon, at Thropton Hall. Thropton WI raising funds for Northumberland Mountain Rescue Team. A sale of cakes, plants, bric-a-brac bargains & raffle. All support and donations welcome (p17).
- Hepple WI:** Thursday 13th August: Steph & Ali Mills, Ginger House Garden, Horncliffe Mill, Berwick: Flower Arranging Talk and Demonstration.
Competition: Floral Arrangement in a Tea Cup (p7)
- Whittingham Show:** Saturday 15th August: Show Field near Whittingham Lane NE66 4RJ (p27)
- The Star Inn, Harbottle:** Saturday 15th August, from 7.30pm: Cheviot Folk Night in The Courtyard Barn (p14) 
- Charity Event:** Sunday 16th August, 12.30pm start at Shillmoor Farm: fund raising for MS, Injured Jockeys and Parkinson's UK. Fun for all the family (p16).
- U3A, Rothbury:** Monday 17th August: Outing: The Great Tapestry of Scotland (p19)
- UCRG Newsletter deadline:** Wednesday 19th August for the September edition (p2) 
- Cafe Church:** Sunday 23rd August, 3.45-5pm, Harbottle Village Hall. All welcome (p13,33)
- Glendale Show:** Saturday 29th August: Wooler Show field, NE71 6QX (south of Wooler on A697) (p27).
- Bellingham Show:** Saturday 29th August: Bellingham Show Field NE48 2JY (p27)
- ALNHAM CHURCH:** SUNDAY 30TH AUGUST: Summer Lunch At the Church 12.30 for 1.30pm (p5)..
- Rothbury Educational Trust:** Tuesday 1st September: Deadline for submissions to apply for an educational grant (p19).
- Harbottle Show:** Saturday 5th September: The Oak Field NE65 7DG (p11,27)
- The Star Inn, Harbottle:** Saturday 5th September: food & drink available plus evening Auction of Produce for Harbottle Show (p14). 
- Coquetdale Music Trust:** Sunday 13th September: Thropton 7.30pm: Claude Bourbon (p17)
- Coquetdale Music Trust:** Saturday 19th September: Thropton 7.30pm: Sam Kelly with Jamie Francis (p17)
- Thropton Show:** Saturday 19th September: NE65 7JE (p27)
- UCRG Newsletter deadline:** Wednesday 23rd September for the October edition (p2) 
- Alwinton Show:** Saturday 10th October: NE65 7BQ (p27)
- Harden Quarry Talk:** Thursday 22nd October, from 7pm at The Rose & Thistle, Alwinton: An UCRG event: Archaeologist Dr Clive Waddington will speak on his team's excavation work at Harden Quarry. Free community event, all welcome (p8).
- Coquetdale Music Trust:** Monday 9th November: Thropton 7.30pm: Toby Shaer, Archie Moss & Jack Warnock (p17)
- Coquetdale Music Trust:** Saturday 28th November: Thropton 7.30pm: Grace Smith Trio & Archie Churchill-Moss (p17)

ALNHAM

NEW:

ALNHAM CHURCH SUMMER LUNCH

To be held on

SUNDAY 30TH AUGUST

At the Church

12.30 for 1.30

Pimms on arrival followed by Lunch

Raffle. Cash Bar

For queries and dietary requirements please contact
Jenny Sordy: 07736486367. jenny@alnhamfarm.co.uk

Tickets £25 per person. Children under 12 years free

Payment by BACS: Alnham District Church Council
Sort Code: 30-99-50. Account No: 34157460
Please state name as reference

Numbers limited due to the capacity of the Church

We look forward to seeing you!

NETHERTON

Netherton exercise class: Drop in and have a go at Chair Based Exercises, **every Monday 10am to 11am** in Netherton Village Hall. Everyone is welcome, £3 per person per session.

For more information call Charlotte on 01669 640265 or email Charlottebx@gmail.com

Netherton WI: New members always welcome. For further information please contact Joan Blakey.

Netherton Village Hall Coffee mornings: the Hall Coffee mornings are normally held on the **First Monday in each month from 11am until 12noon**. Everyone is welcome.

The Netherton Craft Group: We meet at Netherton Memorial Hall at **2pm until 4pm on the 3rd Thursday of the month**. Come along and join us for chat and an afternoon spent with like-minded company. Please bring along anything you are currently working on. We also knit small blankets, cardigans and hats for premature babies. We very much look forward to welcoming you to the Group so if you require any further information please contact Judith on 01669 631189 or email judith_barton256@btinternet.com



Netherton Garden Club

Invite you to join us for a visit on

THURSDAY 9TH JULY 2026

TO

ABBOTSFORD HOUSE AND GARDENS, KELSO.

You can find out more here: <https://www.scottsabbotsford.com>

Stopping on the way at Woodside Nursery for refreshments and plants.

Picking up from:

Rothbury Library 08.30, Thropton (X Keys) 08.40 Netherton 08.50
(plus Whittingham/Glanton by request)

COST: £25.00 per head.

Reserve your place first, email:

fcmog@hotmail.co.uk (01669 620085) advising where you wish to be picked up.

To secure the booking, **payment must be made by Friday 3rd July 2026.**

Pay by BACS to **sort code: 80-22-60 Account Number 26130665**, quoting your name and 'outing' as the reference.

To pay by cash or cheque, please ring to arrange with **Charlotte** (01669 640265)

HEPPLE

Hepple Village Hall:

Seated chair exercise:	Thursdays 10-11am
Northumberland Basketry Group:	3 rd Wednesday of the month
Table Tennis:	Tuesdays 7pm

Hepple WI: regular Thursday meetings and activities, including guest speakers. New members always welcome.



Table Tennis is at Hepple Village Hall on Tuesday evenings at 7pm. All welcome.



Northumbria Basketry Group meets monthly, mostly, on the 3rd

Wednesday of each month between 10am-4pm. New members are always welcome. Please contact Gill Phillipson for extra details and queries.

Chair Based Exercise in Hepple:

Chair based exercise will benefit everyone; you don't need to be chair bound to benefit.

The Hepple Seated Chair Exercise runs every Thursday 10am-11am.

For information contact Chris Wilson:
01669 640012 or
Chris.wilson601@btinternet.com

Hepple Women's Institute Programme 2026-27

**Thursday Meeting starts at 7.00 pm in Hepple Village Hall
Pooled supper. Visitors welcome £5**

2026

- | | |
|-----------------------------|--|
| July 9th | Angeline Schofield, Chinese Cookery Demonstration
Competition: Chinese Item |
| Aug 13th | Steph & Ali Mills, Ginger House Garden, Horncliffe Mill,
Berwick: Flower Arranging Talk and Demonstration
Competition: Floral Arrangement in a Tea Cup |
| Sept 10th | Majorie Davy, Felting Workshop
Competition: Most Number of Items in 1 lb Jar beginning with
letter F |
| Oct 8th | Tony Iley, Talk on Sheepdog Trialling
Competition: Photo of a Dog |
| Nov 12th | Charlotte Boxall, Christmas Wreaths Workshop
Competition: Home-made Christmas Card |
| Dec 10th | Christmas Dinner, venue tbc |

2027

- | | |
|-----------------------------|--|
| January | No meeting |
| Feb 11th | Pie and Pea Supper, followed by Programme Planning
Subs Due |
| Mar 11th | Kate Simpson, Talk on her Work as an Artist
Competition: Drawing, any Medium |
| April 8th | Performance by Blyth Tall Ship Sea Shanty Singers
Competition: Musical Instrument |
| May 13th | A.G.M. |

Contributions for raffle prizes will be gratefully received each month.

ALWINTON



The Rose & Thistle

We have new menus to explore, so please come along and enjoy our traditional country pub deep in the heart of the wonderful Northumberland National Park.



Message from Alwinton Parish Council

The new email address for Alwinton Parish Council is: clerk@alwintonparishcouncil.gov.uk

Please note that our old 'Gmail' address will not be monitored going forward and a new website will be launched in the coming weeks which will also have contact details for the PC via our clerk.

Simon Taylor, Chair - Alwinton Parish Council

Harden Quarry Excavation Talk by Dr Clive Waddington

The Upper Coquet Resource Group are delighted to announce that Archaeologist Dr Clive Waddington will speak on his team's excavation work at Harden Quarry on **Thursday 22 October from 7.00 pm at The Rose & Thistle Inn, Alwinton.**

The team, which excavated the site for several months in 2025, found platforms where roundhouses may have once stood and piles of stones cleared by Bronze Age farmers to create fields. Their work suggested that people lived on the Cheviot Hills as far back as 2400 BC. Although they already knew people from this era lived along the river valleys, the uplands were not believed to have been cleared for farming and settlements until late into the Bronze Age. The team also found multiple burial cairns (piles of stones that were used as grave markers) on the site. In these cairns the team found stone grave boxes, which once likely held skeletal remains that had since decomposed, as well as a fully intact pot containing cremated remains.

This will be a free to attend community event and will include a raffle to benefit the ongoing efforts of The Upper Coquet Resource Group to assist community groups, events and necessities such as defibrillator consumables and first aid courses. We also hope to have our 2027 Calendars on sale. Should anyone wish to donate a raffle prize please contact Margaret Ward, Susan Rogerson, Simon Taylor, Billy Gibson, Gail Johnston, Pauline Burke, Bessie Rogerson or Tracey Boldy. Thank you.



Updated:

ALWINTON CHURCH

MUSIC

& BBQ Available



In Alwinton Church
Saturday 25th July 6pm



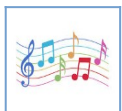
Alastair Anderson



Through The Bedroom Floor (folk/pop)



James Tait with Martha Darcy and Jonah Sampson
(classical, folk & pop)



The Sturdy Beggars (folk)

Cat & Mac

(Latin-inspired covers & their own Alt-folk compositions)

Tickets cost £10 and are available from Sharon Graham
sharon@alwinton.net, Julia Stott 630241 & Helen Holmes 650009

In Aid of Alwinton & Holystone Churches

CLENNELL

Clennell Hall Hotel



HARBOTTLE

HATHA YOGA CLASSES: Tuesday Evenings 7- 8.30pm in Harbottle Village Hall (also online). Contact info@judaliyoga.com or see www.judaliyoga.com for more info.



Iyengar Yoga in Harbottle Village Hall on Monday evenings from 6.00pm to 7.30pm. This is a general Iyengar class suitable for all abilities including beginners. For more information call Margaret on 650281 or email margaret@ranken.co.uk

CANINE PARTNERS: Please continue to save your used postage stamps for the charity, Canine Partners, in order to help towards the cost of training even more puppies to develop into helping dogs for disabled and injured people. Karen has kindly agreed to keep the collection bag at The Star Inn, Harbottle. The charity is very grateful for all your hard work. It has helped so much.

<https://caninepartners.org.uk/get-involved/fundraising/recycle-used-postage-stamps/>

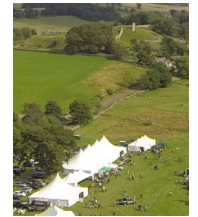
Friends of Harbottle First School

We aim to meet every month to discuss ideas, upcoming events, fundraising ideas etc. and would love to welcome new members from the local community to join us (please note you do not need to have a child at Harbottle First School to join). If you have a little time to spare and would like to help in **any** way then please get in touch via our email: FriendsofHarbottleFirstSchool@gmail.com

and we can add you to the 'Friends' contact list for notification of future meetings and times (these will be varied to try and cater to everyone).

Bev

NEW: 152nd Harbottle Show on Saturday 5th September 2026



The Team are busy planning this year's show and look forward to seeing you all on The Oak Field, Harbottle on the first Saturday in September.

Ringside seats will be available to watch the ever popular **Cumberland and Westmorland Wrestling** and the **Music Tent** will again keep your toes tapping with a truly fantastic selection of local talent on stage throughout the day. Why not join the **car boot sale** on the show field; £10 payable on the day and it will help you to have a bit of a de-clutter as well as enjoying the show from a prime location.

The full **2026 Show Schedule**, which lists all of the classes and programme for this year's show will be available in the coming weeks. Please have a look through and think about which classes you fancy entering. There are lots to choose from and all help to make the show a wonderful, colourful community display. **Tombola and raffle donations are always welcomed, and can be handed to any Committee Member before show day.**

Putting on a village show requires a great **team of volunteers** from this community who year after year give up their time to do so many tasks requiring such different skill sets. We are always wishing to expand the team so if you are willing and able to help out in any capacity be it on the day (car parking, stints on raffle or tombola etc.), during Show week (setting up the show field – always on the lookout for the next generation of strong bodies, or prepping the inside of the tents etc.) or at any point in the year (committee, help with bookings, advertising and sponsors, assist with schedule booklet preparation etc.) then please get in touch via the "Contact Us" section on www.harbottleshows.com. All help is very welcome.

We look forward to welcoming you to our traditional friendly show, set beside the ancient Drakestone and Harbottle Castle.

**The 152nd
HARBOTTLE SHOW**
THE OAK TREE FIELD, HARBOTTLE
By kind permission of The Common Family
SATURDAY 5th SEPTEMBER 2026
from 12pm

ADMISSION AT GATE
Adults: £5
Children (Under 16) : Free

CAR BOOT
£10 per car
(includes drivers admission)

ON FIELD CAR PARKING FREE

HORTICULTURAL, INDUSTRIAL & CHILDREN'S CLASSES
CRAFT DEMONSTRATIONS • CUMBERLAND WRESTLING • DOG SHOW
MUSIC TENT • TERRIER RACING • ARCHERY • FAMILY FUN & MORE

**AUCTION OF PRODUCE TO BE HELD IN THE EVENING
(8PM APPROX) AT THE STAR INN - HARBOTTLE**

PLEASE NOTE, LIMITED MOBILE SIGNAL ON THE SHOW FIELD
CASH SALES PREFERRED

Last call:

Village First Aid : organised and run by St John's Ambulance

Saturday 1st August

**Harbottle Village Hall
9am until mid afternoon**

FREE to all, but please sign up

To book your place please contact John: John.Short2@sja.org.uk or 0779 1797600

The UCRG/Harbottle Village Hall have been approached by John Short of St John's Ambulance, who is keen to resume their training project of what to do if faced with various medical emergencies and injuries. Open to all ages. Further details on the ads below.

This isn't a formal certificated course, but one taking a more flexible approach, which can add or remove topics (on request prior to delivery/at the time of booking) to maximise benefit to the group.

They currently cover: CPR with defibrillator, Seizures, Wound Care, Anaphylaxis/allergic reactions and Medical emergencies.

This is a fabulous opportunity for individuals within the wider valley community to learn, become more confident as well as providing a welcome addition to the free Work Place First Aid courses currently co-ordinated through The UCRG and Harbottle Village Hall.

Village First Aid

Could you be a Local Hero?

St John Ambulance aims to expand back into Northumberland after a long hiatus away. Last year we opened a cadet unit in Alnwick and plans to open more groups:

- Badgers: Aged 5 - 10
- Cadets: Aged 11 - 18
- Adults: Aged 18 +

To help us expand in Northumberland, create partnerships and identify locations for possible units We have launched a project where we aim to bring First Aid knowledge to rural villages throughout the UK. With ourselves locally looking to develop the project in Northumberland.

We carried out our trial for the project in Longhoughton, in February 2026. We worked in partnership with the Parish Council and further support from the Lord Lieutenant for Northumberland. After a week of teaching, 28 members of the community were trained with positive feedback from the residents and plans for further sessions planned in the near future.

The subjects we covered included:

- CPR with Defibrillator
- Choking
- Medical Emergencies
- Seizures
- Bleeding and Wound Care

The First Aid Village sessions will be completely free of charge and open to all age groups and all abilities. We can tailor the sessions to individual group needs. All training will be delivered by qualified St John Ambulance volunteers who have a wide range of specialities and backgrounds. Additional subjects we can cover on request include:

- Major Trauma and catastrophic bleeding
- Falls
- Fracture management

We would love to hear from anybody who wishes to either take part in the Village First Aid Project or would like to discuss volunteering opportunities with St John Ambulance.

Thank you for your time and consideration, and I hope to hear from you soon.

John Short
First Aid Village Project Lead - Northumberland

E: john.short2@sja.org.uk



First Aid Village

Could you be a Local Hero?

Did you know that someone in cardiac Arrest loses a 10% change of survival every minute they do not receive CPR and debibrillation?

Minutes matter, action saves lives.



CPR with Defibrillator

Choking

Medical Emergencies.

Seizures

We're on a mission to give the people of Northumberland the skills they need to save a life.

If you would like to know more information about the project and if you would like to know how to bring the village first aid project to your village you can either scan the QR code above or contact via email

john.short2@sja.org.uk

Bleeding and Wound Care



Harbottle Village Hall:

Harbottle Village Hall: a local amenity for the community of Harbottle, Alwinton, Sharperton & Holystone.

This community resource, with comfy chairs and Wi-Fi, can be booked for private and community events. It is a great space for music lessons, parties, discos, auction of promises, coffee mornings or perhaps even a new venture? Please chat to Tracey Boldy for more information and to make a booking: stickypud@harbottle.net

The past generations have used it for fund raising Coffee Mornings, Jumble sales, Discos, Auction of Promises, Village Pantomimes, Ceilidhs, Private Parties, Art Groups, Sewing Groups, Music Evenings, community consultations, museum exhibitions, mindfulness training plus youth and toddler groups.

Weekly Classes

Monday:	<i>Iyengar Yoga</i>	6 - 7.30 pm
Tuesday:	Judali Hatha Yoga:	7- 8.30 pm
Wednesday:	<i>Ballroom & Latin Line Dance</i>	
	Beginner:	10 - 10.55 am
	Beginner Plus:	11 – 11.55 am
Friday:	<i>Ballroom & Latin Dance:</i>	
	Focus Dance*** or Beginner:	6 - 6.55 pm
	Beginner Plus	7 - 7.55 pm
	<i>Salsa</i>	8 – 8.55 pm
Sunday:	Café Church	3.45 - 5 pm (Fourth Sunday each month)

Harbottle Badminton & Short Tennis:

The equipment and venue are ready when you are.

Focus Dance Fridays 6 - 6.55 pm

We are currently learning how to Samba,
Viennese Waltz and Slow Foxtrot

Come along and join us!

Cafe Church at Harbottle Village Hall

A Coquetdale Churches Together event.

ALL WELCOME!

We would love you to join us for an informal service with a cuppa & cake, songs, talk and creative activity. This is an opportunity for all generations to be together. These services will now be happening 3.45-5pm monthly on the fourth Sunday of each month (except December):

28th June

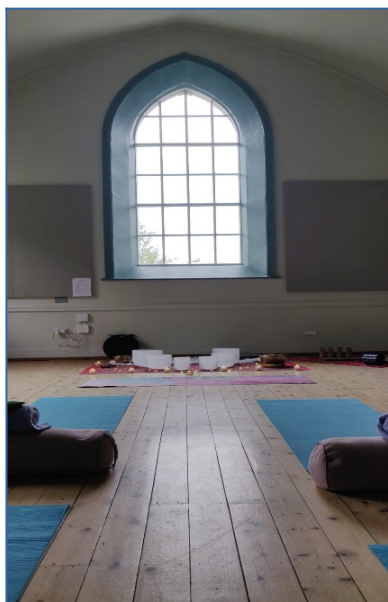
26th July

23rd August

For more information or to get involved please contact either:

Catherine Iley:
catherine.iley@gmail.com

Angela Feather
angela.feather@urc-northernsynod.org



A very peaceful spot for a recent Summer Sound Bath experience.



NEW: The Star Inn, Harbottle

We welcome walkers, cyclists, tourists, bikers, local residents and their families, friends and dogs!



Events Planned over the coming months:

- Saturday 4th July, from 8pm:** Acoustic Music Night in the bar
- Saturday 11th July, from 8pm:** Live music with Ten Bob Blind
- Saturday 18th July, from 7.30pm:** Cheviot Folk Night in the Courtyard Barn
- Saturday 1st August, from 8pm:** Acoustic Music Night in the bar
- Saturday 15th August, from 7.30pm:** Cheviot Folk Night in the Courtyard Barn
- Saturday 5th September:** Harbottle Show Day with food, bar and then Show Auction of Produce in the evening
- Saturday 19th September, from 7.30pm:** Cheviot Folk Night in the Courtyard Barn

June has continued to be a strong month with a busy pub and a high occupancy rate in our B&B rooms and cottage. Thanks to good weather, we are seeing lots of visitors to the area, walkers and cyclists. July and August are our busiest months of the year so here's hoping for good weather 😊.

We were nominated for North East Pub of the Year 2026 in the My Local Awards. Following a few weeks of public voting, we are delighted to have won the award. Thank you to everyone who voted for us, it is very much appreciated. It's great for our fabulous team to be recognised as they are the ones who make this place what it is.

We will continue to open 7 days a week and are now serving food until a bit later in the evenings, until 8.30pm Sunday to Thursday, and until 9pm on a Friday and Saturday.

Staff Vacancies. We are looking for a kitchen assistant or cook 20-30 hours per week to join the kitchen team, aged 16+. This could lead to a catering apprenticeship if the applicant was interested.

Our pizza and pint offer continues during the World Cup - any pizza and any pint for £15 whilst watching the football ⚽ 📺 📺.

Thank you for your ongoing support, it's very much appreciated. We look forward to seeing you again over the warmer days ahead 😊

Karen



The Star Inn, Harbottle Morpeth Northumberland NE65 7DG	Tel: 01669 650221 Email: info@thestarinnharbottle.co.uk Website: www.thestarinnharbottle.co.uk Follow us on Facebook - twitter - Instagram
--	--



Forever Yung Dance Classes in Harbottle Village Hall



Focus Dance Fridays 6 - 6.55 pm
 We are currently learning how to Samba, Viennese Waltz
 and Slow Foxtrot:
 Come along and join us!

We are always ready and keen to welcome new starters..... if you are tempted to try then please get in touch and we will help to get you moving in whichever class that suits you best.

Quotes from current local dancers:

"Happily married but love our different dance classes!"

"Good fun, made new friends and the perfect way to keep fit."

"We never thought ballroom dancing would be our cup of tea, but we joined when we moved here, just to get to know people. We've loved it ever since and I have even taken up Salsa classes!"

"There is no such thing as bad dancing, it's all just joyful."

"Great fun with a very patient teacher, nice meeting new people including the opportunity for coffee at The Star after some good, gentle, relaxing exercise."

"Very friendly groups; great teacher. You won't regret it. One of the best things I have done; love it!"

"Just love it and it makes me smile. Like the social, health & fun aspects, including the social dances expertly curated by Lisa, as well the challenge of learning so many different styles of dance slowly over time. Ken has the patience of a saint, carefully explaining and re-explaining the steps to us."

ADULT

Ballroom, Latin, Salsa, Line

Dance Classes

Harbottle Village Hall



Ballroom & Latin
Beginner
 Friday Evenings
 6:00 - 8:55pm
 Fun & Welcoming.
 Learn Foxtrot,
 Jive, Waltz
 and Cha Cha.



Salsa
Beginner
 Friday Evenings
 8:00 - 8:55pm
 Fun & Welcoming
 Dance Classes for
 Beginners.
 Immerse yourself in
 the rhythms
 of Latin America.



Ballroom & Latin
Modern
LINE DANCE
Beginner
 Wednesday Mornings
 10: 00- 10:55am
Beginner PLUS
 Wednesday Mornings
 11:00 - 11:55am
 Non partner form of
 Ballroom & Latin
 Dancing.
 Great exercise
 and lots of fun.

Ballroom & Latin
Beginner PLUS
 Friday Evenings
 7:00 - 7:55pm
 Foxtrot, Jive,
 Waltz, Cha Cha
 PLUS Tango & Quickstep!

NO Partner
Required for
any of our
programs!

£25 per
4 week program

£45 per 8 week program



CONTACT INFO:
 Tel: 07818 726941
 Email: yungdance@icloud.com
 Website: www.foreveryungdance.co.uk

2026 Community Social Dances at Harbottle Village Hall

Saturday 27th June	Around the World theme with half hour Salsa workshop
Saturday 29th August	Fire and Ice theme with half hour Paso Doble workshop
Saturday 24th October*	Spooktacular Halloween Dance with half hour Tango workshop
Saturday 12th December*	Christmas Dance at <u>St Michael's, Alnwick</u> with half hour Viennese Waltz workshop

6:15 – 9.15pm/*6.00- 10.00pm Please purchase tickets in advance

Door prize "pooled food" for mid-evening buffet Everyone is welcome No dance experience/partner req'd

If you wish to know more or join any of the classes then please contact Ken & Lisa:

www.foreveryungdance.co.uk

Email: yungdance@icloud.com

Please check our Facebook page for updates: <https://www.facebook.com/foreveryungdance/>

NEW:

CHARITY EVENT

for Multiple Sclerosis,
Injured Jockeys and Parkinson's UK



SUNDAY 16TH AUGUST, 2026

12.30 p.m. Start



SHILLMOOR FARM

Upper Coquetdale, Northumberland
NE65 7BN



Come help
the Waltons
celebrate
100 YEARS
as Coquetdale
Tenants

FUN FOR ALL THE FAMILY!



**GUIDED WALKS
2 ROUTES**
(Mobility friendly)



TERRIER RACING



**TRACTOR &
TRAILER RIDE**



AUCTION



DUCK RACE
Kindly sponsored by
our friends at



FISH 'N' CHIPS



BAR & MUSIC



ALNCOM

TIMES



Arrival for walkers @ **12 noon**
Walk @ **12.30pm**
Duck Race @ **3pm**
Terrier Race @ **4pm**
Auction @ **5pm**



WALKERS ENTRANCE FEE (incl. fish 'n' chips)
£25pp • £10 per child (before the day)



NON WALKERS - 2.30pm ONWARDS
£10 DONATION PER CAR

Payable to Rhona Elliot (07598 034072) • Weatherbys Bank
MS Borders Racing Club
Account Number: 00433766 • Sort Code: 60 93 03



NEW: Coquet River Action Group

One of the activities that CRAG is undertaking at present is pulling out Himalayan Balsam (an invasive, non-native species) from the river banks in an attempt to stop it spreading.

We are keen to locate sites as soon as possible. If you know of any or find some then please get in touch via the email below with details, including if possible a photo and a What3words location or google maps pin drop location.

We would hope then to gain the landowner's permission to go and pull it out before it seeds.

Thank you.

couqetriveractiongroup@outlook.com

THROPTON

NEW:



COFFEE AND SALE



SATURDAY 8TH AUGUST

10-12 NOON

AT THROPTON VILLAGE HALL

Thropton W.I. raising funds for

NORTHUMBERLAND NATIONAL PARK MOUNTAIN RESCUE TEAM

Cakes, plants, bric-a-brac bargains & raffle

Please come along and support this great cause!

NEW: The Coquetdale Music Trust – Thropton at 7.30pm

Sunday 13th September:	Claude Bourbon
Saturday 19th September:	Sam Kelly with Jamie Francis
Monday 9th November:	Toby Shaer, Archie Moss & Jack Warnock
Saturday 28th November:	Grace Smith Trio & Archie Churchill-Moss

Tickets on sale at Tully's, or see website: www.coquetdalemusictrust.com
Or contact: lesleyhallcoquetdalemusictrust@gmail.com

All Concerts start at 7.30pm and feel free to bring your own refreshments

Open Garden at Trehitt Hall

Sunday, 12th July, 12-4pm: at Trehitt Hall NE65 7ET.

Part of The National Open Garden Scheme North East 2026, where Gardens open for Charity.

33 NEW TREWHITT HALL B3
Thropton, Morpeth, NE65 7ET. James and Catarina Leigh-Pemberton. 5.4m N of Rothbury. From Rothbury through Thropton to Snitter. Follow signs from Snitter. 1m on L. **Sun 12 July (12-4). Adm £10, chd free. Home-made teas.** Refreshments in aid of Netherton WI. Fabulous views to the south (Simonside) and west. The garden, surrounding the hall, is a mix of formal, pastoral and woodland. Walled garden with large greenhouse, pond and voluminous herbaceous planting. Vegetable beds and espaliered fruit trees. Woodland walks. A beautiful garden in a rural setting.



ROTHBURY

Rothbury Community Hospital, our local hospital: If you, or a loved one, are interested in a residential place please either email rothbury@pfcare.co.uk or telephone People First Care at their Wooler site on 01668 281 662; ask for Amanda Cowell. Here is a link to a virtual tour of the facility, you can see how lovely and homely it is: <https://youtu.be/Aw5UkCMj9Yo> Or find Rothbury Cottage Care on You Tube.

Over the Bridges: The Church & Community Magazine for Upper Coquetdale is available online at: www.overthebridges.org The UCRG are grateful for the ongoing link in Over the Bridges for people to find our latest newsletter via the Church website.



COQUETDALE LEAGUE OF FRIENDS

Reg. Charity No. 508289

About us: The Coquetdale League of Friends, a local registered charity, has been run for the last 46 years by volunteers. Our aim is to support health providers and those who rely on their services in the Coquet Valley. We do this by raising funds and managing donations so that we can help our health care providers give their patients the best health services in this very rural area.

Join: We are always very happy to welcome new Friends. If you would like to get involved please contact the Secretary at cathyjacob@hotmail.com. We are particularly in need of anyone with social media or web building skills.

Donate: We are only able to continue our work supporting the nurses and doctors working in the Coquet Valley and their patients because of the money generously donated by the public. If you would like to donate our bank account details are as follows:

Lloyd's Bank, Sort code: 30-99-50, Account number: 20679463

Updated: Retired? Or semi-retired? Thought about joining U3A?

Forthcoming Events for 2026

20 th July, 10am:	Nick Lewis: The Cultural Significance of The Farne Islands
17 th August:	Outing: The Great Tapestry of Scotland
21 st September, 10am:	Margaret Bozic: The History of The Lit & Phil
19 th October, 10am:	Poems and Music on the theme of Autumn
22 nd November, 10am:	Annual Lecture: Dr Chris Ferguson: Anglo-Saxon Northumbria, a maritime kingdom
21 st December, 10am:	Fool's Gold – The Blaydon Races Show, Stories, and Live Music around this iconic Geordie folk song

Everyone is welcome to come along to these talks. Non-members simply pay £2 on the door which includes light refreshments. All talks take place in the Jubilee Hall - here's what's coming up over the next few months.

To find out more about Coquetdale u3a, visit www.coquetdale.u3asite.uk

Membership is only £10 for the year up to April 2026 (or £5 if joining from January). For more information, email us at: coquetdale.u3a.secretary@gmail.com

Joining your local u3a is a great way to find and develop new interests and make friends in a relaxed environment. We have monthly get-togethers, quiz nights and trips and visits. The interest groups that are the lifeblood of an u3a and at Coquetdale u3a we offer a broad range of groups, just look at the list below:

Art Appreciation	Book Groups	Ceilidh Dancing	French Conversation
Cycling	Discussion Group	Board games	Food and Drink
Gardening	Music Appreciation	Nordic Walking	Poetry
Spanish Conversation	Table Tennis	Vegetarian Food	Walking Group
Natural History	Knit & Stitch	Italian Conversation	Philosophy
Ukulele			

Susie, Coquetdale u3a Group Coordinator

REMINDER: ROTHBURY EDUCATIONAL TRUST

The Trustees of the above Trust have a yearly amount available to provide a certain number of grants. These will be considered for:

- Students entering the first year of a recognised University degree course
- Students commencing an accredited apprenticeship, including those involving courses at Colleges of Further Education
- Students must be under 25 years of age on 1st September 2026
- Students will be granted one payment only

Potential beneficiaries must be permanently resident within the Parishes of Cartington, Hepple, Hesleyhurst, Rothbury, Snitter, Thropton, Alwinton, Harbottle and Tosson and the parts of the Parishes of Brinkburn, Hollinghill and Netherton that lie within the Ancient Parish of Rothbury.

There will be a limited number of payments and applicants will be required to complete a short form outlining why they feel they should be considered for the grant. Forms will be available from the Clerk, Marga Scott-Johnson, email: margascott@rothbury.net

Only applications by email will be acknowledged and applicants must stipulate a 'start date' for their course. The deadline for submission of forms is **1st September 2026**. Please note that students will not be notified until mid-October as to whether their application has been successful or not.

Please note this annual opportunity for local young people to apply for a grant (yes an actual grant, not a loan that you have to pay back with exorbitant interest during your working lifetime; they still exist!).

Simply contact Marga for the application form and return it by 1st September.

Don't miss out on the chance of help to cover some vital costs.



An evening of words and music

©Susan Barwood Photography

Rothbury Golf Club



Thursday 25th June

**A Celebration of Nature and the
River Coquet**

Tickets £10/£5

7.00 - 10.00pm

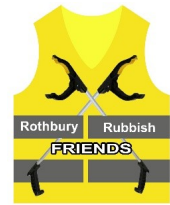
More details and tickets from Alnwick Playhouse

<https://alnwickplayhouse.co.uk/event/poetry-music>



**Coquetdale
CREATIVES**





Rothbury Rubbish Friends

Rothbury Rubbish Friends are aligning their dates with the Coquetdale Repair Café sessions (see below). So we will be meeting every six weeks, for a community litter pick and get together for a cuppa, in the Jubilee Hall, at 11.00am.

Meet in the Haugh Car Park at 10.00am, litter pick till 11.00, then join us for a cuppa and chat. See our posts on the Rothbury Rubbish Friends Facebook Group, or email Katie Scott at rothburyrubbishfriends@gmail.com to be added to the mailing list.



Coquetdale Creatives

Rothbury Poetry, Writing, and Music Events take place on the first Wednesday of each month, except January and August. We have a guest writer and guest musician. Audience members can also share their work or perform a song or tune.

Email Katie Scott at Coquetdale.creatives@gmail.com or check out the website for more information, and to see who the guest artists are: www.coquetdalecreatives.art



Rothbury Climate and Nature (CAN)

Rothbury CAN holds monthly meetings for members and supporters to socialise and share ideas. If you would like to come along keep an eye on the Rothbury CAN Facebook group, or email Katie Scott at rothbury.can@gmail.com See our website for more information www.rothburycan.org

The Rothbury Tree Trail

A new tree has been added to this popular, circular, walk. The Fastigate Yew in All Saints Church Yard is waiting to tell you her stories. This includes information about the church itself, told by Jeff Reynolds. Also stunning music by local group *Tillering Tree*. Free! Download via the Rothbury Tree website: Climate And Nature | Rothbury Trees UK



Next Coquetdale Repair Café for 2026:

10 am-2 pm in the Jubilee Hall, Rothbury

Saturday 27th June

Saturday 19th September

Saturday 21st November

Broken toaster? Torn clothes? Broken zips? Garden items need sharpening?
Damaged picture frames? Dodgy chair? Loose garden fork handle? Don't bin it! Fix it!

Please visit us on Facebook and Twitter (@CoquetRepair) or <https://www.coquetrepair.co.uk/> for the latest information on how you can have your broken items repaired, learn repairing skills & have a cuppa, cake & a chat.

New Volunteers always welcomed, especially if you have electrical/woodwork expertise or have a specialist area like mending clocks for example. If interested please email the group.

Messages from Rothbury GP Practice


The Rothbury Practice
1 August at 20:20

Please remember A&E is for genuine life-threatening emergencies only!
If you do go to A&E and your medical need is not life-threatening you will experience significant delays.
Getting the right care, in the right place, can be quicker and closer to home...

Think:

- pharmacy first
- GP
- NHS111 online - or by phone - 24 hours a day, 7 days a week - they can help assess and direct you to the right place to go

#NHS #HeretoHelp




About our urgent treatment centres (UTCs)

Did you know?

Our UTCs have an appointment service.

Call **NHS 111** and they can book an appointment. You will see a doctor or nurse practitioner depending on your need.

You won't have to wait as long. Simply turn up for your appointment slot.



building a caring future

NPC Rothbury
14 November at 18:00

UTCs are for certain urgent care needs. Conditions like:

- Minor head injuries
- Sprains and minor fractures
- Minor skin infections and wounds
- Minor allergic reactions

If you're not sure, check with NHS 111. They can book appointments at our UTCs.

You can find urgent treatment centres at these hospitals:

- Alnwick Infirmary
- Berwick Infirmary
- Hexham General Hospital
- Wansbeck General Hospital

More details and opening times - <https://orlo.uk/M14Eo> See less

NEW:



THE ROTHBURY DIVISION

Rothbury • Coquetdale • Whittingham Vale
Glanton • Elsdon



COUNTY COUNCILLOR
STEVEN BRIDGETT



SURGERY TOUR

I'M HERE TO LISTEN AND HELP
Come along to speak with me about local issues, concerns or ideas.

SATURDAY 25TH JULY 2026	
Glanton Memorial Hall	9:00am - 9:45am
Whittingham Memorial Institute	10:00am - 10:45am
Netherton War Memorial Hall	11:00am - 11:45am
The Rose & Thistle, Alwinton	12:00pm - 12:45pm
Harbottle Village Hall	1:00pm - 2:00pm

SATURDAY 1ST AUGUST 2026	
Thropton War Memorial Hall	9:00am - 9:45am
Hepple Village Hall	10:00am - 10:45am
Elsdon Village Hall	11:00am - 12:30pm

MONDAY 20TH JULY 2026	
Rothbury Library	4:30pm - 6:00pm

FRIDAY 24TH JULY 2026	
Rothbury Library	10:30am - 12:00pm

i If you'd like to come along, please email or call to book an appointment.
Email: Steven.Bridgett@northumberland.gov.uk
Tel: 07590032619

If you can't make it to a surgery, please get in touch. I'd be happy to hear from you.

LOCAL VOICE • LOCAL ACTION • STRONGER COMMUNITIES

News from the Valley

The Coquet Valley Archers Club

Under 18's must be accompanied by a parent or guardian. If you wish to know more why not join up and come along to our twice monthly Sunday sessions. For more information email: info@coquetvalleyarchers.org



COQUETDALE YOUNG FARMERS

You don't have to be a farmer to be part of Young Farmers as it is a rural, youth based organisation for anyone interested in rural and countryside activities. Coquetdale Young Farmers Club warmly invites anyone interested in becoming a member to join them. The club meets usually once a week on a Monday night and welcomes anyone between the ages of 14 - 26. It is a great way to meet friends and get involved in competitions and other activities.

Interested? Then please contact Lauren Clark on 07788724835 for more information.

Out-reach Post Office Services (aka Find Bessie)



Day	Location	Time
Monday	Hepple Post Office	9.00 am - 10.00 am
	Netherton Village Hall	10.30 am - 12.30 pm
	Holystone Church	1 pm - 2.30pm
	Hepple Post Office	3.00 pm - 5.30 pm
Tuesday	Thropton Village Hall	10.00 am - 12.00 noon
	Hepple Post Office	2.00 pm - 5.30 pm
Wednesday	CLOSED	
Thursday	Rochester Village Hall	9.15 am - 11.15 am
	Otterburn Village Hall	12.00 noon - 2.00 pm
	Hepple Post Office	2.30 pm - 5.30 pm
Friday	Hepple Post Office	9.00 am - 1.00 pm
	Hepple Post Office	2.00 pm - 5.30 pm
Saturday	Hepple Post Office	9.00 am - 12.30 pm

Government Help for Off Gas Grid Homes

The UK Government has announced new financial support for households that rely on heating oil, aimed at helping rural and off-grid communities manage rising energy costs. The support will be targeted at low-income households in rural communities affected by the recent surge in energy prices.

Support for rural & off-grid homes

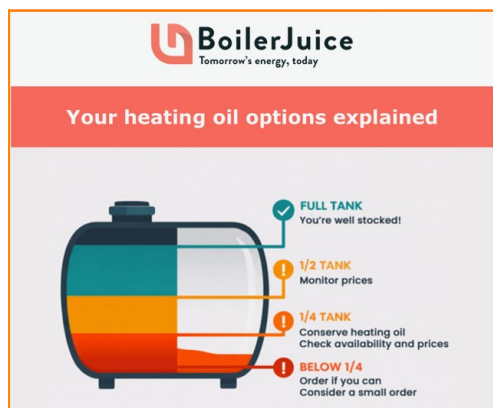
The funding is intended to support homes not connected to the gas grid, many of which rely on heating oil for both home heating and hot water.

Support delivered locally

In **England**, the funding will be distributed by local authorities through **the Crisis and Resilience Fund**, which comes into effect on 1 April. In Northumberland further information regarding what it covers and how to apply can be found via the following link:

<https://www.northumberland.gov.uk/cost-living-support/crisis-and-resilience-fund>

It is worth noting that this fund remains in place until 31st March 2029 and aims to support vulnerable households and may help with food, energy & water bills plus essentials linked to them e.g. blankets, soap, warm clothing etc. The funds can also help build local resilience, so appears to be open to communities as well as individuals. Please check it out. Also, please think of your neighbours, family and friends – not all will be aware of this potential bit of help.





Coquetdale Food Hub

**Struggling to make ends meet?
Finding there's little money left for food?**

**We can help!
We can provide:**



Cupboard staples



Meat & dairy



Fresh fruit & vegetables



Pet food

**...to support you and your family until your
circumstances improve**



Coquetdale.hub@gmail.com



07957 298057 (message or text only)

Confidential • Local • Here to help our community

Coquetdale Food Hub is a wholly owned partner of the Alnwick District Food Bank,
Lindisfarne Community Hub, Alnwick NE66 1AX

Registered with the Charity Commission for England & Wales, Number 1173294

Email: alnwickdistrictfoodbank@gmail.com Website: www.alnwickdistrictfoodbank.co.uk

Cost of Living Sources of Information

The Citizens Advice Service for free, confidential information and advice on benefits, debt, housing and employment problems. You can obtain help from us in a number of ways:



- By telephoning Northumberland Advice line on 0808 278 7944
- For energy advice 01670 339749.
- Help claiming universal credit 0800 144 8444. Open Monday to Friday 9am to 4.30pm. Closed Bank Holidays.
- By calling into our drop-in sessions: 10-12 on **Tuesday mornings**.

Debt advice is also available:

- **Monday to Friday on 01670 339960 or text DEBT to 81400**
- By going on-line at www.citizensadvice.org.uk/northumberland

Warm Hubs: created by CAN as places within the local community where people can be assured of finding a safe, warm and friendly environment in which to enjoy refreshments, social activity, information and advice and the company of other people'. The local Warm Hubs currently available are in The Star Inn in Harbottle, Hepple, Thropton War Memorial Hall, Rothbury Jubilee Hall, Longframlington and Coquetdale Lunch Club.

Did you know.....there are cheaper social tariffs out there for broadband?

<https://www.gov.uk/government/news/cheaper-broadband-for-struggling-families-14-august-2022>

Travelling to the EU? Check your EHIC expiry date. If expired, apply for a free GHIC via the NHS site to provide access to state run hospitals and GPs in the EU for the same price as a local. Travel insurance is still advisable.

<https://www.nhs.uk/using-the-nhs/healthcare-abroad/apply-for-a-free-uk-global-health-insurance-card-ghic/>

Energy Advice in Rural Northumberland:

<https://energyadvicenorthumberland.org.uk/our-work/>

Pension Credit:

To calculate if you are eligible use:

<https://www.gov.uk/pension-credit-calculator>

For more information:

<https://www.gov.uk/pension-credit>

Don't miss out if you are eligible. If in doubt then check it out as it will help with paying for fuel.

Travelling to Europe? Don't get caught out by the 10 year rule

UK travellers used to be able to carry up to nine months left on an old passport over to a new one.

This meant that a passport could be valid for more than 10 years.

This did not matter when the UK was a member of the European Union (EU).

But the rules changed after Brexit, and the majority of EU countries no longer accept British passports which were issued more than 10 years before the date of travel.

This is known as the "10-year rule".

To enter those countries now, your UK passport must:

- have been issued less than 10 years before the date you enter the EU country (i.e. the "date of issue")
- be valid for at least three months after the day you plan to leave (i.e. the "date of expiry")

If your passport does not meet these requirements, you will be refused entry.

It is always worth checking in with **Moneysaving expert Martin Lewis** to read about his latest advice on energy bills, rising mortgages and the cost of living crisis.

Simpler Recycling in Northumberland....possibly by 2027/28 for rural areas like ours?

Across England from 1st April 2026 the Government is introducing new Simpler Recycling rules, which means that all councils must collect the same set of recycling materials from all households. Changes appear to include new food waste collections plus a new bin for additional recycling materials. The green bin general waste will still be collected every two weeks. For an update on where Northumberland County Council are with this please check their website:

<https://www.northumberland.gov.uk/bins-recycling-waste/simpler-recycling-northumberland>

It seems that food waste collections are going to start firstly in the urban areas from Autumn 2026, with a further roll out to remaining areas, dependant upon securing additional funding, in 2027/28. The additional dry recycling will begin its phased introduction in early 2027.

Landlines are changing

BT is the first telecoms company to axe the timetable that would have seen the nation's old landlines replaced with digital phone lines by December 2025. The timeline for completing the transition has been pushed back to the **end of January 2027...but companies are working on this switchover NOW.**

In power cuts: the new digital phone services will not work. If you do not have a mobile phone or reception then your provider should give you a battery back up so that you are not cut off if there is a power cut. Remember to check how long the offered battery pack lasts for and discuss if it is sufficient to cover the length of power cuts that we usually endure.

If you are worried about being switched over based on your lack of mobile phone or internet, or our poor history of power cuts, or rely on personal fall alarms or burglar alarms, or have medical worries that require access to 999 etc.then get in touch with your provider NOW and check if your devices will work with this new enforced digital connection.

This is especially important for those who rely on Telecare alarms. Providers need to know this information to ensure customers continue receiving Telecare services without disruption during the switchover.

For more information: www.digitalphonesswitchover.com

There was a recent media article covering issues encountered elsewhere which may be of interest: <https://www.theguardian.com/money/2026/may/02/landline-phone-users-voice-fears-over-digital-switchover>

Social Tariffs

Social tariffs for broadband, phone and mobile are available to help people on Universal Credit and some other benefits to get connected at a lower cost.

Check if you're eligible by asking your provider.

If your provider doesn't offer a social tariff, you can switch to one that does. Your current provider might let you leave your contract without paying a penalty fee.

Mobile providers including EE, O2, Smarty and VOXI offer social tariffs for mobile phones.

For a list of broadband providers offering social tariffs visit www.inorthumberland.org.uk

iNorthumberland

Better connectivity for Home & Business

Landlines going digital

Everyone with a landline in the UK will be affected by this change.

The good news is your landline isn't going anywhere, and for most this change will be straightforward.

The company that supplies your phone line, such as BT, Sky and TalkTalk, will contact you before the planned switch over date to check in and discuss what you need to do to make sure your service isn't affected.

If you have any concerns, you can contact your phone line supplier at any time to ask what their plans are for your phone line.

If you need more information, visit www.gov.uk/guidance/uk-transition-from-analogue-to-digital-landlines

The image shows a social media post from NPC Rothbury (8h) and a UK Health Security Agency poster. The poster features a sun icon and a thermometer icon, with the text: "HOT WEATHER", "Hot weather is forecast in the North East", and "Look out for vulnerable family, friends and neighbours. Make sure they are aware of how they can keep cool and hydrated".

The infographic is titled "Six signs of heatstroke" and features a central illustration of a dog lying down. Six arrows point to the dog with labels: "Heavy panting", "Drowsy and uncoordinated", "Diarrhoea", "Collapsing", "Vomiting", and "Excessive drooling". To the right, the text reads: "If your dog is showing any of these signs: Immediately contact your nearest vet". Below this, a list of actions is provided: "• Move your dog into the shade", "• Offer them drinking water", and "• Start cooling your dog by soaking their body with cold water, avoiding their face". A small logo for "Dog Trust" is in the bottom right corner.

UK Entry Requirements for Dual Nationals are changing: The new requirements are part of changes to the immigration system that aim to streamline and modernise the UK border. Dual nationals will need to show either a British Passport or a new digital version of the certificate of entitlement (£589) to attach to their second nationality passport.

The new rules are linked to the roll out of the Electronic Travel Authorisation (ETA) system, which requires visitors to the UK who do not have a visa to apply for a £16 entry document before arriving. The new rules do not affect Irish passport holders but do affect other EU citizens. However these new rules also affect dual nationals who can not apply for a ETA and must meet the new documentation requirements instead.

Check before travel (ideally before booking) as checks will be carried out by airlines when departing en route back to the UK.

For an overview of the changes: <https://www.bbc.co.uk/news/articles/cy57p1v61d1o>

REMINDER: POT HOLES DON'T REPORT THEMSELVES!

Have a go after every journey as it is very easy to do. www.northumberland.gov.uk , scroll and find Report road/street Issues (top left at present on the web page) - <https://fix.northumberland.gov.uk/>

If you consider them to be dangerous or an emergency, please call **0345 600 6400**.

Go on, have a go at reporting at least two after each journey as there are plenty to choose from.

There were many reports of tyre and car damage occurring locally in the past year, so don't forget that you can make a claim for the damage.....look for evidence on the above website in case your demon pothole has previously been reported but not repaired. And don't give up after the first refusal letter.

Coquetdale 500 – that's holes not miles!

Northumberland National Park

There are always plenty of activities and sites to visit across the whole of the Northumberland National Park.

For more information please check the website: <https://www.northumberlandnationalpark.org.uk/whats-on/>

Local Village Shows at a glance:

- Powburn Show:** Saturday 1st August: Powburn NE66 4JE
- Glanton Show:** Saturday 8th August: Glanton Show Field NE66 4AL
- Whittingham Show:** Saturday 15th August: Show Field near Whittingham Lane NE66 4RJ
- Glendale Show:** Saturday 29th August: Wooler Show Field, NE71 6QX (south of Wooler on A697).
- Bellingham Show:** Saturday 29th August: Bellingham Show Field NE48 2JY
- Harbottle Show:** Saturday 5th September: The Oak Field NE65 7DG
- Thropton Show:** Saturday 19th September: NE65 7JE
- Alwinton Show:** Saturday 10th October: NE65 7BQ

Northumbria Police

It is always worth a reminder to us all about the advice from our local police regarding fraud and scammers:
<https://www.northumbria.police.uk/advice/advice-and-information/fa/fraud/personal-fraud/>

Phone scams

Your bank and the police will never ring and ask you to verify your PIN, withdraw cash or purchase high-value goods. They'll also never come to your home to collect your card, cash or purchased items. If you get a call like this, end the call.

If you get a call from your bank or the police, make sure you know who the person is before handing over any personal details. You can do this by calling your bank (the number on the back of your card) or the police (**101**) on a different phone line.

To get a different line, use a phone owned by a family member, friend or neighbour. This is because scammers can keep phone lines open after pretending to hang up. So while you think you're making a new phone call, the line is still open to the scammer, who pretends to be someone from your bank or the police (also see [Courier fraud](#)).

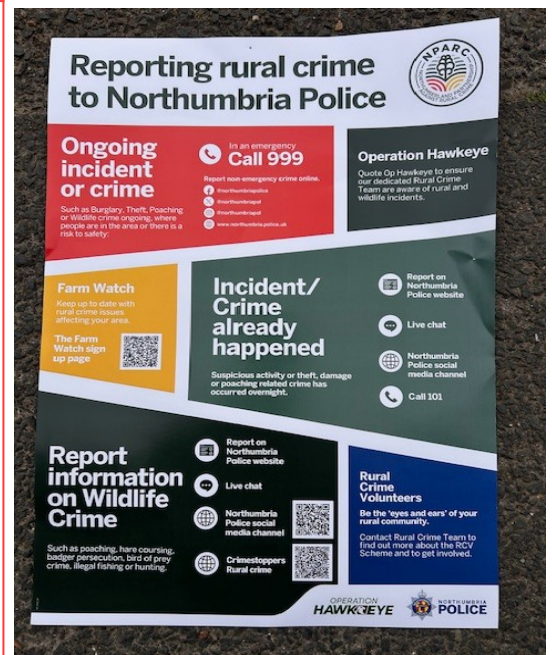
Depending on your bank, the security questions they ask may be different, but they'll never ask you to authorise anything by entering your PIN into your phone.

Never send money abroad to a person you've never met or to anyone you don't actually know and trust.

Likewise, never agree to keep your online relationship a secret. This is a ploy to get you not to tell your family and friends, who'll see the scam for exactly what it is.

Equally, don't accept any offer of money. A scammer may ask you to accept money from them into your own bank account, using a convincing story as to why they can't use their own account.

The circumstances may seem genuine, but you may unwittingly be committing the criminal offence of money laundering.



Some Ideas for the Coming Months



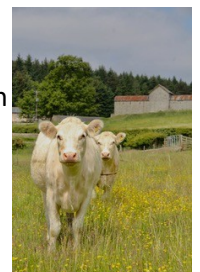
NEW: Cragend Farm for Historic Tours every Tuesday and Wednesday from now until October plus B&B & Self Catering Accommodation. All visits must be booked in advance.

Cragend Farm is opening its gates for three one day visits to walk **"The Tree Trail."** With a collection of specimen trees planted by Lord Armstrong of Cragside, the newer plantation and The Great Northumberland Forest additions, Cragend Farm is now offering the opportunity to see parts of the Estate not usually open to the public, in order to see the Tree Evolution from the Blackburn to the River Coquet, and up to The Cragside Estate border. The dates are:

Tuesday July 7th 2 - 3.30pm

Booking in advance required as limited numbers. Bring sensible outdoor attire, picnic snacks in rucksack and a thermos of something hot or cold (weather dependant). This trail is rugged and varied with wet and steep areas plus craggy and pastoral areas.

Cragside's little neighbour with a big story to tell, Cragend Farm, was featured on TV's 'Matt Bakers Travels with Mum and Dad' On More 4 Series 3.: Since being featured a book has been written about the findings at the farm called: Transformation: Lord Armstrong's Cragend Farm and is available to buy from Tully's and Soulsby's in Rothbury.



01669-621533

lourenwick@cragendfarm.co.uk

shaunrenwick@cragendfarm.co.uk

www.cragendfarm.co.uk

Holidays Heritage Farming, Cragend Grange, Cragend Farm, Rothbury, Northumberland NE65 7XN
Historic Houses Member.

Gift Vouchers are also available for Cragend Farm tours - ideal for birthdays, thank yous and Father's/Mother's Day.

R & DM EDMONDSON LTD
t/a **NEWTOWN ENGINEERING CO.**
AGRICULTURAL - HORTICULTURAL - PLANT ENGINEERING
FABRICATION & COUNTRY STORE

Garleigh Road, Rothbury, Morpeth, Northumberland, NE65 7RG

 We have now updated our website,
you can find it here:-
www.newtownengineering.co.uk

You can also now find us on Facebook:-
 **Newtown Engineering Co**
(please like and follow our page)

If you have any queries or are interested
in any products, please contact us
by telephone:-
01669 620755

or by email:-
enqs@newtownengineering.com
or
stores@newtownengineering.com

September 2025

A "Local Hero" shout out goes to Michael and Tim at **Colliedog Computers in Rothbury**, who carefully took me step by step through the process of buying my new PC and transferring everything so that it looked as familiar as possible in order to assist a bear of little brain!

Just look at all they can do to help you with your computing challenges:

<https://colliedogcomputers.co.uk/what-we-do/>

"And last, but not least, we offer free advice! Call us, send a message, send a tweet, or better yet,

simply walk into our shop in Rothbury and talk to us face-to-face; we will listen to you and do our very best to answer your questions and solve the problem."

Support local makers, bakers & artists

POP UP CAFE!

FREE ENTRY

NORTHCRAFTED
ARTISAN
MARKETS

WIN A £25 VOUCHER FOR £1 PROFITS TO A LOCAL CHARITY

ARTISAN CRAFT MARKETS 2026
LONGFRAMLINGTON MEMORIAL HALL
ROTHBURY ROAD
LONGFRAMLINGTON
NE65 8AH
10.30AM TO 3.30PM

SUN 8 TH MARCH	SUN 16 TH AUGUST
SUN 19 TH APRIL	SUN 20 TH SEPTEMBER
SUN 17 TH MAY	SUN 18 TH OCTOBER
SUN 14 TH JUNE	SUN 15 TH NOVEMBER
SUN 19 TH JULY	

WANT TO TRADE WITH US? SCAN HERE 

NEW: Rothbury Traditional Music Festival

Friday 10th- Sunday 12th July
Various venues around Rothbury
All welcome

Programme & More information:
www.rothburymusicfestival.co.uk

ROTHBURY
EST 1891 **GOLF CLUB**

LADY CAPTAIN'S CHARITY NIGHT
FASHION SHOW

Friday 3RD JULY
7 PM

In aid of
 **HospiceCare**
NORTH NORTHUMBERLAND

BIG DISCOUNTS
ON FAMOUS BRANDS,
M&S, NEXT AND MANY MORE.
AVAILABLE IN ALL SIZES.
PAYMENT BY CASH OR CARD.

PLUS RAFFLE
AND PRE-LOVED
LADIES CLOTHES RAIL
FOR HCNN
PLEASE BRING
CASH

£5 TICKETS
AVAILABLE AT THE BAR,
INCLUDES A PROSECCO
OR ORANGE JUICE.

*Style with Purpose,
Fashion with Heart*

SHOP. SUPPORT. MAKE A DIFFERENCE.

For more info Call Paul on 07792 728 262 or search for: www.rcvbarn.info

DO YOU WANT TO LEARN A NEW SKILL?
DO YOU ENJOY WOODWORKING?
DO YOU HAVE PRACTICAL SKILL YOU CAN SHARE?

If so we can help each other at

**"THE BARN"
COMMUNITY WORKSHOP**

Ryehill Framhouse NE65 7NG
(just North of Rothbury)
my three word ### candy.campfires.propelled




"The Barn" Sessions

"The Barn" Community Workshop is now open

Tuesdays 2pm to 4.30pm
Mens Shed-Wednesdays 10am to 12.30pm
Wednesdays 7pm to 9.30pm

New from 17th January 2023
Mens Shed-Tuesdays 10am to 12.30pm

For more details e-mail: rcvbarn@gmail.com

COQUETDALE TRANSPORT



Route 16a and 16b Timetable

NEW TIMETABLE FROM 1ST NOVEMBER 2024

	Departure times		
	16a	16a	16a
Tuesday and Saturday Service			
X14 (From Newcastle) arrives Rothbury*	07:23	11:43	14:38
471 (From Alnwick) arrives Rothbury**	N/A	13:05	14:35
Rothbury, Silvertown Lane corner with Garleigh Road	08:10	12:00	14:40
Rothbury, Rothbury Community Hospital	08:13	12:03	14:43
Rothbury, Opposite Queens Head	08:15	12:05	14:45
Thropton, Cross Keys	08:21	12:11	14:51
Snitter, The Cottage	08:25	12:15	14:55
Netherton, Old Coach House	08:35	12:25	15:05
Alwinton, Phone Box	08:49	12:39	15:19
Harbottle, First School	08:55	12:45	15:25
Holystone, Mill	09:02	12:52	15:32
Hepple, Post Office	09:15	13:05	15:45
Thropton, Three Wheat Heads	09:24	13:14	15:54
Rothbury, Queens Head	09:30	13:20	16:00
Rothbury, Rothbury Community Hospital	09:32	13:22	16:02
Rothbury, Garleigh Road before Silvertown Lane	09:35	13:25	16:05
<i>This Service will not operate on Christmas Day, Boxing Day or New Years Day</i>			
X14 (to Newcastle) arrives Rothbury*	10:00	14:00	17:05
471 (to Alnwick) arrives Rothbury**	09:33	13:33	N/A

	Departure times	
	16b	16b
Thursday Service		
X14 (From Newcastle) arrives Rothbury*	07:23	14:38
471 (From Alnwick) arrives Rothbury**	N/A	14:35
Rothbury, Silvertown Lane corner with Garleigh Road	08:10	14:55
Rothbury, Rothbury Community Hospital	08:13	14:58
Rothbury, Opposite Queens Head	08:15	15:00
Thropton, Cross Keys	08:21	15:06
Snitter, The Cottage	08:25	15:10
Netherton, Old Coach House	08:35	15:20
Alwinton, Phone Box	08:49	15:34
Harbottle, First School	08:55	15:40
Holystone, Mill	09:02	15:47
Hepple, Post Office	09:15	16:00
Thropton, Three Wheat Heads	09:24	16:09
Rothbury, Queens Head	09:30	16:15
Rothbury, Rothbury Community Hospital	09:32	16:17
Rothbury, Garleigh Road before Silvertown Lane	09:35	16:20
<i>This Service will not operate on Christmas Day, Boxing Day or New Years Day</i>		
X14 (to Newcastle) arrives Rothbury*	10:00	17:05
471 (to Alnwick) arrives Rothbury**	09:33	N/A

Rothbury Shopper's Route

It is essential to book your place via Lesley to avoid disappointment. This **FRIDAY** only service is aimed at the elderly or mobility- impaired, providing door to door service and arrives at Rothbury at approximately 9.45am and leaves around 11am.

Upper Coquetdale Community Healthcare Transport

Visiting Rothbury Hospital or a local surgery? Having trouble getting there? Need a lift?

Upper Coquetdale Community Transport offers a friendly and cost effective Healthcare transport service to help those with no transport to get to their **GP appointments**:
£2 for journeys under 5 miles **£5** for journeys 5-15 miles
£10 if the journey is above 15 miles

We also go to various **regional hospitals**:

Alnwick **£15** Wansbeck/Morpeth **£20**
 North Tyneside/RVI/Cramlington/Freeman/Hexham **£25**

Opticians/Dentists/Podiatry/physio and other essential appointments work alongside pricing for regional hospitals according to their locations (unless at Rothbury hospital).

DRIVERS NEEDED: UCCT are looking for volunteer drivers for both the car and the minibus services. If you feel that you could help then please contact Lesley in order to help keep these much valued services on the road.

PARISH OF UPPER COQUETDALE

COMMUNITY NEWSLETTER

JULY & AUGUST 2026



NEW: The Happenings

I did say at the end of the last letter that we might have some good news regarding a Rector for the parish..... well we have heard from the horse's mouth (The Bishop of Newcastle) that Anastasia (Stacy) Tregartha has been appointed and her induction service will be announced at a later date. She has been for some time at a church near Northallerton but everyone that met her recently thought her a joy, so we hope she settles here. We are so delighted that she wishes to come and we will do everything possible to make it a happy post for her.

On Friday 12th, we had a very lovely music night in Alwinton Church with Gareth Davies-Jones - not a big audience unfortunately but many there had heard him previously and enjoyed his music.

On Sunday 14th we held our Pimm's Party, which was blessed with a good day. We spent a very nice afternoon with plenty of people supporting us and enjoyed many delicious canapes! We raised £1300, which is marvellous and so thank you to all who came along, and a special thank you to Marion and John for opening their house and garden for us.

On **Saturday 25th July** we hope to have a full house for an evening with Alistair Anderson, James Tait and other super local artists performing at Alwinton Church. There will be a BBQ available probably in the interval and we start at 6pm.

The beautiful Trewhitt Hall garden is open to the public on **Sunday 12th July** and is well worth a visit. They will open from 12 noon until 4pm, with tea being provided by Netherton WI and our church!

On **Sunday 28th July** we are all joining the United Reform Church for Ed Butler's last service here. He will be such a miss and sadly another interregnum which probably like ours will last for several years, which does make things very difficult for everyone involved.

We are all celebrating and looking forward to the arrival of Stacy and hope you all have a wonderful summer. We wish all the children either moving school or leaving for Uni, college or work the very best of luck.

Until next time....

Julia

NEW:

200 Club Winners for July 2026

200 Club Winners for August 2026



£20: *George Thompson*
£15: *Chrissie Easton*
£10: *Ian & Jo Wood*

£20: *Margaret Henderson*
£15: *Caroline Vickers*
£10: *Catherine Hill*



*The new batch of **200 Club** tickets are now on sale and all the proceeds go towards keeping Alwinton and Holystone churchyards in good order - **please ring Julia Stott (01669 630241) or Joan Blakey (07810 772967) if you wish to buy tickets from the last few remaining for £10 each.***

Updated:



& BBQ Available



**In Alwinton Church
Saturday 25th July 6pm**



Alastair Anderson



Through The Bedroom Floor (folk/pop)



**James Tait with Martha Darcy and Jonah Sampson
(classical, folk & pop)**



The Sturdy Beggars (folk)

Cat & Mac

(Latin-inspired covers & their own Alt-folk compositions)

Tickets cost £10 and are available from Sharon Graham
sharon@alwinton.net, Julia Stott 630241 & Helen Holmes 650009

In Aid of Alwinton & Holystone Churches

The Parish website has moved: to the Church of England site called **A Church Near You** - and it is important to include the "A": <https://www.achurchnearyou.com/> Simply type in the name of your church e.g. Alnham or the postcode and the site will take you there. Eventually we will probably add a Parish site but at the moment all the information is to be found at each church's page. Please remember it is a growing site and it will take a while to add everything and to make sure we are making the most use of the site.

Alison Ball

The latest copy of The UCRG Newsletter can always be located on this new website under any of the local churches e.g. Rothbury All Saints/ Notice Sheets section at:

<https://www.achurchnearyou.com/church/8034/news/notice-sheet/grid/>

Thank you to Alison for updating this each month and helping to share news around Upper Coquetdale.



Cafe Church at Harbottle Village Hall

**A Coquetdale Churches Together event.
ALL WELCOME!**

We would love you to join us for an informal service with a cuppa & cake, songs, talk and creative activity. This is an opportunity for all generations to be together.

These services will now be happening monthly on the fourth Sunday of each month (except December), 3.45-5pm:

2026: 28th June 26th July 23rd August

For more information or to get involved please contact either:

Catherine Iley:
catherine.iley@gmail.com

Angela Feather
angela.feather@urc-northersynod.org

We are still trying to widen the Newsletter coverage, as well as our contact database. We don't have a complete set of contacts for all households in the area. PLEASE CAN YOU HELP? We are grateful to the many that we know of who already print and share copies with their neighbours, especially for those living "off the net." Also, if you have new or old neighbours ask them if they wish to join the blind copied distribution list by asking them to email me, Tracey, on stickypud@harbottle.net and I will add them to my list. Susan also has a distribution list and posts the latest copy on some local social media outlets. It isn't perfect but at least we keep trying to improve it. Thank you.

In addition to these sharing routes, since the start of COVID as many are aware we very occasionally use the same distribution network to speedily distribute additional items that perhaps have missed a newsletter deadline, or may aid people in anticipation of storms, or even help local businesses advertise a sudden bit of information. We always hope that this is acceptable and it has never been excessive (1-2 a year), but just in case anyone out there wishes to sign up only to the newsletters and nothing else, then please let me know via the email above and I can easily put you into a "no extras" mail box.

The UCRG has been established over 20 years as a registered charity. We promote the benefit of the inhabitants of the Upper Coquetdale area, consisting of the parishes of Netherton & Biddlestone, Harbottle, Hepple & Alwinton. The charity supports in the interest of social welfare for recreation and other leisure time occupations and is run by local volunteers.

If you know of a group that may benefit from some funding and they meet the above criteria, then please contact us via jsjrogerson@btinternet.com

Funds are raised each year via the Quiz sheets, Duck Race, Calendars and other activities such as Bingo evenings. We have also been grateful recipients of the proceeds of a Thursday evening Quiz at The Star Inn, Harbottle (Thank you all and Karen). Donations are always welcomed.

Over the years we have supported many local activities and events including the local toddler group, sport equipment in Harbottle Village Hall, purchasing local defibrillators and their cabinets, music events in the church and Young Farmers events.

Throughout the pandemic we were able to continue with our community newsletter by switching to an electronic format thus enabling isolated communities to keep in touch.

In 2021 we covered the costs of renewing the batteries and consumables for the Alwinton & Netherton defibrillators. In 2022 we funded the provision of a defibrillator in Harbottle village at a cost of £1510 plus the cost of several first aid/defibrillator training courses open to anyone in the local parishes. Then in 2023 we assisted with the training of members of the local Archery Club and again ran a free First Aid Course. In 2024 we covered the cost of consumables in some of the local defibrillators, contributed to the mat fundraising efforts of Rothbury Wrestling Academy, assisted in the repair of the trailer belonging to the Coquet Valley Archers and made a donation to Coquetdale Squirrel Group to help them continue their important conservation work. A grant was also made to fund some new Christmas lights in Harbottle. Harbottle Baby & Toddler Group also benefitted from a grant.

We have recently, February 2026, funded the framing of a Mothers' Union Banner, a piece of local heritage, which will be available to view in Alwinton Church. March 2026 sees us funding yet another free first aid course. In February 2026 the UCRG donated £400 to help the Coquet River Action Group purchase a new test kit to assist them with their work on the River Coquet.

We appreciate all the support we receive and put every penny to good use locally.



EM ELSDON MEMORIALS
 MJ ROBERTS AND SON
 MEMORIAL, VASES AND ENGRAVING SERVICES

ALL ENQUIRIES TO:
ANGI ROBERTS
 TELEPHONE NUMBER: 01669 650367
 EMAIL: ELSDONMEMORIALS@GMAIL.COM

HINDMARSH EQUESTRIAN: Freelance groom covering Northumberland/Scottish Borders. Available for:
 Coaching/Teaching * Riding- schooling, hacking, jumping, competition * Lunging * All general yard duties: Bringing in/turning out * Competition/ hunt turnout * Plaiting * Trimming * Competition grooming * Pony Club grooming * Holiday cover * Tack cleaning * Holding for vet/ farrier etc. Fully Insured*First aid certificate*Full Pony Club B test*certified freelancer with British Grooms Association*Quad bike ticket



Please contact me to discuss your requirements: Anna Hindmarsh.

Call/text: 07469249158 * Email: hindmarshequestrian@hotmail.com * PM on Facebook.

My "local" heroes; Pass it on:

Heads2toe: soft tissue and sports/remedial massage therapist Stephen Heads, based in Rothbury but can visit your home. 07921 568965 or <https://www.heads2toe.co.uk/>

Rothbury based Kevin T Coe for fixing plumbing leaks! Friends have been saved recently by Kevin appearing quickly to work his magic. When in need: 07970 539574.

Please call or email for a free quote
 07825888462
 Twin_trees@yahoo.com

- Tree removal
- Crown reductions
- Crown lifting
- Tree pruning & thinning
- Stump grinding
- Pollarding
- Hedge trimming
- Hedge reduction

Wag & Co: We are the only visiting dogs charity befriending older dog lovers in their own homes as well as in care or in hospitals. For further details either to volunteer with your dog or ask us to visit, then please check our web site: www.wagandcompany.co.uk

Volunteer with your dog
 ...and help end loneliness in older dog lovers.

We're a community of dog owners sharing our dogs with older dog lovers across the North East. There are thousands of lonely pensioners who can no longer look after a dog of their own and miss them terribly. Just a couple of hours a week for a chat and a cuddle with your special dog makes all the difference to someone else's life and probably yours too. Apply today, we'll make it safe and easy to volunteer!

Apply online www.wagandcompany.co.uk



THE ROSE AND THISTLE ALWINTON
 FOOD & ACCOMMODATION IN NORTHUMBERLAND

BAR & RESTAURANT
 Now fully refurbished - The Rose & Thistle Inn is a traditional country inn serving real ales, lunches, evening and Sunday meals in the bar and in our stunning beer garden.

BED & BREAKFAST
 Five rooms at The Rose & Thistle Inn provide quiet, comfortable and spacious bed and breakfast accommodation in a beautiful setting.

RED LION HOUSE
 A stunning self catering property set over three floors that can very comfortably accommodate up to 11 people.

THE ROSE & THISTLE
 Alwinton, Northumberland NE65 7BQ
 Bar & Restaurant • 01669 650226
 Accommodation • 07881 365809 • rooms@roseandthistlealwinton.co.uk
www.roseandthistlealwinton.co.uk

<p><u>Local Private Hire Taxi Service</u> I've just set up as a Private Hire taxi service here in the valley. I live in Netherton so I'm local for the needs of people living and working here. My contact details are as follows: Mobile number 07718 585508 and email rickyvph24@gmail.com Web site details will follow shortly. I have all my NCC licences and insurance in place and started the service recently. Please get in touch and I will get you to where you need to be! Ricky Lawrence</p>	<p><u>DEFIBRILLATOR LOCATIONS</u></p> <p>Alnham: the wall of Kings Priory School Field Centre Alwinton: car park on the toilet block wall Biddlestone: wall of No1, Biddlestone Barn, NE65 7DT Clennell: at Clennell Hall Hotel Harbottle: Star Inn courtyard Hepple: on the village hall wall Holystone: Priory Farm wall Netherton: on the village hall wall Sharperton: End wall of Sawmill Close, nr junction Thropton: on the school wall</p>  
<p><u>DRAKESTONE BUILDING SERVICES</u> Joinery, General Building, Tiling & Decorating Work <u>Billy Gibson</u> Tel: 01669 650206 OR 07979042499 Email: feeshearer@googlemail.com</p>	<p><u>Collins Fish Van</u> Visits the area on a Thursday: Hepple Post Office: 8.00am Sharperton (on the hill): 8.30am Alwinton Village Green: 9.00am Harbottle (Chapel end then Pub): 9.10am Holystone Post Office: 9.40am</p>
<p><u>Northumbria</u> <u>Pet Crematorium</u></p> <ul style="list-style-type: none"> • Beautiful Peaceful Environment • Compassionate and Caring Service • 100% Guarantee Your Pets Ashes Back • Pick Up & Delivery Service • 24hr Ashes Return Service <p>Tel: 07393 481 561 Email: northumbriapetcrem@gmail.com www.northumbriapetcrematorium.co.uk</p>	<p><u>POT HOLES DON'T REPORT THEMSELVES!</u></p> <p>Have a go after every journey as it is very easy to do. www.northumberland.gov.uk, scroll down to TOP TASKS and click on Report a Pothole. Alternatively phone them on 0345 600 6400. How easy is that? NCC defines "an actionable defect" as a pothole of at least 40mm (1.5 inches) deep and a minimum of 300mm (1 foot) in diameter. However, we think that if you aren't happy, then report it!</p>

RMAC Heating: Small business focussing on quality not quantity. With extensive experience in the Heating industry working as engineer and service manager I decided a few years ago to go solo and concentrate on the installation, service and repair of oil, gas and LPG boilers and heating systems. Undertaken work in Upper Coquet area as well as Alnwick & Morpeth. **Trades:** Gas Work, Central Heating & Plumbing. Annual visit to current Harbottle clients occurs in September, but can do more if you wish to coordinate with neighbours for a boiler service...please just get in touch.



Humanities Tutor Available

French, English, History, Classical Civilisation & Ancient Greek

I am a student at the University of St Andrews studying English and Classics with over three years of tutoring experience to GCSE and A-level. Available for enthusiastic, student-led sessions online and in-person!

Email: ibredmaynecontact@gmail.com

Litter Challenge: Enjoy, Respect & Protect our Countryside

Please help; if you see it then please pick it up safely and bin it.

LOCAL EV CHARGING POINTS:

***ALWINTON CAR PARK *HARBOTTLE: IN FRONT OF THE SCHOOL**

Reminder from Northern Power Grid:

Winter is coming...Being winter ready isn't just about getting your big coat out. We know northern winters can be tough. Whilst we will do everything in our power to make sure the cold doesn't dampen our winter season festivities, the weather can be severe enough to damage your local electricity network.

We will do everything we can to prevent this, including spending millions of pounds on maintaining and looking after your power network. But it can still happen, particularly in winter weather. So, as we get ready for the season of fireworks and festivities, it's important that you know what to do and are prepared if your power goes off.

Support available for our customers: If you experience a power cut, the easiest way to report and access the latest information is via our website www.northernpowergrid.com/power-cuts. Alternatively, our teams are here for you 24/7 by calling **105.....store this number on your mobile or address book.**

You can also find some useful hints and tips on our website at www.northernpowergrid.com/what-to-do-in-a-power-cut. Our customer support vehicles are prepared and ready to go out into local communities, where possible.

Power cut advice and tips include:

- Bookmark Northern Powergrid's online power cut map and reporting service on your mobile devices – www.northernpowergrid.com/power-cuts
- Have a charged mobile phone with important numbers saved, including 105, the free national power cut phone line.
- check out our **Be Prepared** page on our website for handy tips on how to manage during a power cut
- Turn off electrical appliances at the socket (this is particularly important for heating or cooking appliances as your power could be restored at any time and potentially cause a safety hazard).
- Keep one light switched on so you know when power is restored.
- Keep a battery-operated or wind-up torch handy – they're much safer than candles.
- Have a grab bag ready in your home with a torch, spare batteries, charged power banks, and a blanket - just in case!
- Check on your elderly or sick neighbours and relatives.
- Ensure you have warm clothing and blankets handy and some food and drink in your home that does not require electricity to heat or prepare it.
- Call 999 in the event of a medical emergency.

If you have **additional needs due to your medical or personal circumstances**, and are not part of our Priority Services Membership, you should consider joining for **free** by visiting [Priority Services Membership](#) on our website or by **calling 0800 169 2996**. This will help us to support you during a power cut. This will include regular updates on the situation and consideration of any need for provision of hot food and alternative accommodation.

Those who can join include customers:

- Of pensionable age
- Who have a hearing or visual impairment
- Who have additional communication needs
- Who are in a vulnerable situation
- Who have young children at home
- Who are disabled, chronically sick, or have a long-term medical condition

Please remember to check on neighbours, friends and family members who may need additional support.

Advice and help with your bills this winter: We know that cold weather can cause worry about energy bills. You can find FREE independent advice from our charity partners on our web site.

Keeping in touch: If your power is ever affected, we might share a link with you to a video with more information. The link is safe to click.

Here for you, whatever the weather: Our teams work 24/7 to look after your power network and keep the lights on. If your power does go off, call us on 105 and we will do everything we can to get it back on as quickly as possible. Our teams will be ready to help whenever you need us.

Stay safe this winter season.

[CONTINUED OVERLEAF.....](#)

CIVIL EMERGENCIES PLAN FOR HARBOTTLE PARISH

Emergencies resulting in loss of power, telephone, mobile telephone, water.
Damage to property

In the Event of Electricity Failure

The Emergency Hub at the Star Inn will come into operation in the event of a long power outage, especially if there is no indication when power will be restored.

A varied response will be needed according to the emergency, but as a general rule:

Loss of power overnight: Emergency hub will open up in the morning and remain open as long as needed.

Loss of power during the day: Emergency hub will open late afternoon/early evening to provide hot food, drinks and hot water.

A sign will be placed outside the Star to indicate that the Hub is open and we will endeavour to spread information by word of mouth or telephone if they are working.

Emergency Centre:

Star Inn, Harbottle: Telephone: 01669 650221
Equipped with generator and providing shelter, heat, hot water and food.

Main Contacts:

Harbottle:	Sue Bolam:	The Old Mill, 01669 650360
Holystone:	Stuart Wardlaw:	Lanternside, 01669 650409
Sharperton:	Joe Ormston:	North Sharperton Farm, 01669 650321

Other contacts:

Simon Kenny, Park House Farm:	01669 650250
Alan Stripp, Well House Cottage:	01669 650324
Northumberland County Council:	01670 627599; 0345 6006400

Other Resources

Two tents, 10m x 15m and 3m x 4m with lights and heaters
Contact: Simon Kenny

Parish Emergency Fund

Held by Harbottle Parish Council
March 2024

As Storm Eowyn raged the Warm Hub Kicked In....Please remember this for next time...



The Star Inn - Harbottle

18h · 🌐



Our emergency warm hub is up and running in The Courtyard Barn via the generator. It's toasty warm with a log fire, tea/coffee facilities and WiFi. We also have food and drinks available via the pub/kitchen, eat-in or take-away. Tel: 01669 650221.

Everyone is welcome to use this space whilst the power is off, whether you buy anything or not. #StaySafe. #storm