

## The Radcliffe Team Ministry

Parish of St Mary

and

Parish of St Thomas and St John with St Philip's Community Centre



# NOTICES THIS WEEK

*Sunday 3 May 2026*  
*The Fifth Sunday of Easter*

## Sunday and the week ahead

Sun 3 <sup>rd</sup>  Fifth Sunday of Easter	9:30am	Eucharist at St Mary's followed by the Meeting of Parishioners (to elect Churchwardens), the Annual Parochial Church Meeting (election of Deanery Synod reps and PCC members; to receive Annual Report and Accounts), and a short PCC meeting; first Sunday graveyard cleanup	Readings: Acts 7:55-end; 1 Peter 2:2-10; John 14:1-14  Followed by refreshments
	11:00am	Eucharist at St Thomas and St John's <ul style="list-style-type: none"> <li>• <b>First Sunday ingathering of non-perishable food and toiletries for Porch Boxes food packs</b></li> <li>• <b>Small Projects Team are running short of Raffle prizes could you help please,we would like to have a raffle at the Christian Aid Quiz night. Please see Debs Heaven with any donations.</b></li> </ul>	
	12:30pm	Baptism at St TJ's of Cruz Cameron Downes	
	2:30pm	Baptism at St TJ's of Nellie Tomlinson	
Tue 5 <sup>th</sup>	7:30pm	Deanery Synod at Christ Church Walmersley	
Wed 6 <sup>th</sup>	10:00am	Team mid-week Communion at St Mary's	With refreshments
	7:00pm	(-9:00pm) First meeting of Team First Wednesday Friends in the vicarage. Eucharist followed by discussion. Please let Rev Marie know if you intend to be present.	
	7:30pm	AGM of Churches Together in Radcliffe at St TJ's	Refreshments from 7:15
Thu 7 <sup>th</sup>	10:00am	(- 11:00am) First Thursday of each month until October, St TJ Gardening Group meets	
	7:00pm	St Mary's Parochial Church Council	At the vicarage
Fri 8 <sup>th</sup>	10:15am	(- 11:30) Following coffee, Team Friday Friends Study Group, at St TJ's. All welcome as we meet to study the Bible	
	noon	Team Intercessions at St Thomas and St John's, followed by bring-your-own-lunch	
Sat 9 <sup>th</sup>	10:30am	Saturday Café at St Thomas and St John's, including Vestry Hour (10:30-11:30am) for baptism and wedding enquirers. <ul style="list-style-type: none"> <li>• April Bonus Ball was won by Susan Prime</li> </ul>	Until 12:30pm
	11:00am	(- 2:00pm) Spring Fayre at St Mary's	No 2 <sup>nd</sup> Saturday Cafe
Sun 10 <sup>th</sup>  Sixth Sunday of Easter Beginning of Christian Aid Week	9:30am	Eucharist at St Mary's	Followed by refreshments  
	11:00am	Eucharist at St Thomas and St John's	
	<b>In each church there will be Christian Aid Week envelopes to help us support the relief and development work of the Churches. Please gift aid if you are a UK taxpayer.</b>		
	12:30pm	Baptism at St Thomas and St John's of Noah Reeve Maudsley Severs	

# Points for Prayer

<b>Simon Cook</b>	For Simon, appointed to be our next Archdeacon
<b>Baptism</b>	Cruz Cameron Downes and Nellie Tomlinson, their parents, godparents and supporters
<b>For healing</b>	<b>St Mary's:</b> Catherine, Andrew Berry, Revd Dougie Bird, Berenice Carey, Anna Cowsill, David Duckworth, Mick Dugdill, Colin Embrey, Margaret Embrey, Christine Firth, William Firth, Peter Gorman, John Heuze, Chris Hollis, Pauline Holt, Harry Melling, Sue Richardson, Joyce Uren, Ian Williams, Denis Wright, Janice Wright <b>St TJ and elsewhere:</b> Marilyn Alldred, Joyce Baker, Lawson Bant, Carol Cain, Stuart Cowpe, Reg Dee, Jacob Dewar, Zohreh Galati, Lyn Hill, Claire Jones, Louise Peart
<b>Bereaved</b>	Family and friends of Elizabeth Allen and Margaret Ratcliffe
<b>Books of Remembrance</b>	<b>St Mary's:</b> William Roberts (3 <sup>rd</sup> ); Julia Rhoda Simms (4 <sup>th</sup> ); Mary Mable Holden (9 <sup>th</sup> ) <b>St Thomas and St John's:</b> Samuel Cooper, Cyril Barrand (3 <sup>rd</sup> ); Emma Lena Smethurst, Kenneth Henry George Coldridge (4 <sup>th</sup> ); John Todd (6 <sup>th</sup> ); Florence Brooks (8 <sup>th</sup> ); Derek Riley (9 <sup>th</sup> )

## Looking ahead

<b>May</b>		
10 <sup>th</sup> - 16 <sup>th</sup>		Christian Aid Week. Christian Aid is the relief and development agency of the British Churches. As well as envelopes in church to support our own giving, we seek to involve others by house-to-house collecting and by in-supermarket collecting. <b>Can you volunteer a few hours please? See Philip Gooderson (0161 761 6136). These slots need volunteers please:</b> Tuesday 12 May, noon - 2pm @ Tesco Little Lever Fri 15 May, 9am-noon, noon-2pm, 2-4pm all @ Tesco Little Lever Fri 29 May, noon - 2pm @ Morrisons Whitefield
Mon 11 <sup>th</sup>	12:30pm	Funeral of Elizabeth Allen at St Thomas and St John's
	7:00pm	Deanery Mothers' Union Festival at St Mary's
Thu 14 <sup>th</sup>	10:00am	ASCENSION DAY Mission Community Prayer Journey - two walks begin at 10:00am, one from Christ Church Walshaw and one from St George Unsworth. Both end at St Thomas and St John's with "bring your own lunch" and Holy Communion at 1:15pm led by Revd Phil Cansdale.
	7:00pm	Holy Communion at St Mary's
Fri 15 <sup>th</sup>	6:00pm	Mission Community Zoom Prayers (10 minutes) during the days of the "Thy Kingdom Come" prayer Campaign, Ascension until Pentecost. This is a global ecumenical prayer movement praying for people to come to know Jesus. Each day except Sundays.
Sat 16 <sup>th</sup>	7:30pm	Quiz at St Philip's Community Centre: fund-raiser for Christian Aid. Tickets from Philip Gooderson or see poster.
Wed 20 <sup>th</sup>	7:00pm	PCC of St Thomas and St John meets
Thu 21 <sup>st</sup>	7:00pm	PCC Building Sub-committee of St Thomas and St John meets

*To be in touch with the clergy, please contact Revd Marie Pattison, Team Rector (0161 989 5785 or 07795 805767), Revd Irene Thirkell, Curate (07435 657865) or Revd Adele McKie, Associate Priest (07946 383024).*

*To discuss baptisms or weddings, please go to Vestry Hour from 10:30 on Saturdays at St Thomas and St John's, or from 10:45 on Sundays at St Mary's.*

*Please supply future information to [lesandkathleen@btinternet.com](mailto:lesandkathleen@btinternet.com) or to 0161 724 5696.*



St Mary's

Radcliffe Parish

Church



Spring Fayre

(On Church Green weather permitting)



**09<sup>th</sup> May 2026**



**11am till 2pm**

**Come along & support  
your Parish church.**



**Various stalls :**



**Jigsaws(old & New) : Chocolate Tombola : Bottle Tombola  
General Tombola : Raffle : Pick a Bag :**

**Cakes: Inspirational Bit's & Bob's / Necklaces : Café**



Please see below a prayer list from our Mission Community covering first the coming week, then the month.

In the coming week the Churches of our Mission Community will be:

- Giving thanks for & praying for all those who will be part of the Prayer & Spirituality Group in the coming week; praying that someone from each Church would feel called to be part of this group.
- Giving thanks for the many prayer groups & prayer opportunities which are available to us, both in our individual Churches & as multi-Church Mission Community initiatives.
- Giving thanks & praying for those who are preparing for our annual Ascension Day Prayer Journey & Communion Service – that they would be led and guided by the Holy Spirit.
- Praying for inspiration from the Holy Spirit as we look for new ways for our Churches to engage with our worshipping & wider communities; that prayer might be at the heart of all that we do.

## Radcliffe & Whitefield Mission Community Prayer Diary



May 2026

#  
#

1 <sup>st</sup>	We give thanks and pray for all those at St. Thomas & St. John, Radcliffe, who volunteered or agreed to carry on with roles, at the Annual Parochial Church Meeting.
2 <sup>nd</sup>	We pray for all who are involved with ministry to children, families & schools; praying that the seeds of faith would be sown & nurtured in young hearts.
3 <sup>rd</sup>	We pray for many people to respond to Christ Church Walshaw's community survey, to help the team there to discern the best way to develop their mission.
4 <sup>th</sup>	We pray for mission & ministry at All Saints, Stand.
5 <sup>th</sup>	On African World Heritage Day, we give thanks for the continent's unique cultural and natural heritage.
6 <sup>th</sup>	We pray for The Well @ Radcliffe, the new welcome space for the community of St. Andrew's, Radcliffe - for people to come, and for guidance to develop what we offer.
7 <sup>th</sup>	We give thanks for & pray for all who will be part of the Prayer & Spirituality Group meeting this evening; praying that this would be a time of inspiration, sharing & support.
8 <sup>th</sup>	We pray for members of Christ Church Walshaw's Community Choir, as they prepare for their summer concert.
9 <sup>th</sup>	We pray for all who will be running or attending the Bazaar at St. George's, Unsworth today; that this might be a well attended & successful event.
10 <sup>th</sup>	At the start of Christian Aid Week, we give thanks for the work that is done by this charity. We give thanks for our local volunteers & pray for the individuals & communities which are in need of aid.
11 <sup>th</sup>	We pray for members of Christ Church Ainsworth PCC, as they explore new opportunities for mission & outreach.
12 <sup>th</sup>	During Mental Health Awareness Week, we pray for all who suffer from mental health issues; praying also for greater awareness of the importance of good mental health.
13 <sup>th</sup>	We pray for mission & ministry at St. Thomas & St. John, Radcliffe.
14 <sup>th</sup>	We pray for all those who will be part of our Mission Community Prayer Journey today. Praying also for those who will lead or attend Ascension Day Communion at St. Andrew's, Hillock this evening.
15 <sup>th</sup>	We pray for the youth group at St. Andrew's, Radcliffe as they begin Youth Alpha.
16 <sup>th</sup>	We pray for all who will be running or attending the Spring Fair at Christ Church Ainsworth today; that this might be a well supported & successful event.
17 <sup>th</sup>	We pray for & give thanks for the work of the Food Pantry Team at St. Andrew's, Hillock; praying also for all of the individuals & families who access this service.
18 <sup>th</sup>	We pray for mission & ministry at Christ Church Ainsworth.
19 <sup>th</sup>	We pray for mission & ministry at St. Andrew's, Hillock.
20 <sup>th</sup>	On World Bee Day, we pray for greater awareness of the importance of pollinators, the threats they face and their contribution to sustainable development.
21 <sup>st</sup>	We pray for mission & ministry at St. George's, Unsworth.
22 <sup>nd</sup>	We pray for mission & ministry at St. Andrew's, Radcliffe.
23 <sup>rd</sup>	We give thanks for 200 years of faith and worship at All Saints, Stand and ask for God's blessing for the celebratory events taking place throughout the year, and on those involved in organising them. We pray that the year may be a time for building closer relationships with the local community.
24 <sup>th</sup>	We pray for mission & ministry at Christ Church Walshaw.
25 <sup>th</sup>	During the coming days of Eid ul-Adha, we pray for our Muslim communities.
26 <sup>th</sup>	We pray for those who will join together for Jesus Prayer on Zoom this evening; praying also that others might feel called to be part of this time of prayer.
27 <sup>th</sup>	We pray for those who lead & participate in the prayer groups & Bible study groups which are run by our Churches; may they know God's presence & grow in faith.
28 <sup>th</sup>	We pray for those throughout our Mission Community who will be preparing for Baptism in the coming weeks & months.
29 <sup>th</sup>	We give thanks for the green spaces within our parishes & pray that we would be good guardians of this world. We give thanks for all who work for environmental sustainability & climate justice.
30 <sup>th</sup>	We pray for mission & ministry at Emmanuel Community Church, Radcliffe.
31 <sup>st</sup>	We pray for those throughout our Mission Community who will be preparing for Confirmation in the coming weeks, praying that they would be guided by & filled with the Holy Spirit.

*"What wings are to a bird, & sails are to a ship; so prayer is to the soul."*

Radcliffe & Whitefield Mission Community

## Prayer Journey

Thursday 14<sup>th</sup> May 2026

- 10am - Christ Church Walshaw  
Celtic Morning Prayer
- 11am - Christ Church Ainsworth  
Refreshments & Prayer
- 12.15pm - St. Andrew's, Radcliffe  
Prayer
- 1.15pm - St Thomas & St. John,  
Radcliffe  
Refreshments & Holy Communion, led by  
Revd Phil Cansdale

*Please join us as we come together to pray  
throughout our Mission Community.*

*If you don't feel able to walk, join us for  
prayer at any of the Churches on our route.*

# Please join us in prayer for the people of Iran

— for peace, for protection, for comfort for grieving families, and for hope to shine in the midst of great darkness. We also **hold in prayer those members of our community from Iran**, who are deeply concerned for their loved ones back home.

We share [this prayer written by the Rt Revd Dr Guli Francis-Dehqani, Bishop of Chelmsford](#) and unite together in praying:

Ever-loving God,  
who hears us in our anguish and distress,  
and longs for us to be free.  
We pray for the people of Iran and the wider Middle East,  
at this time of fear and uncertainty.  
Be near to those who are anxious;  
bring comfort to all who are suffering.  
Guide those with the power to make decisions,  
and lead them in the ways of wisdom, compassion and moderation:  
that people of goodwill would seek harmony and reconciliation.  
Join us with our Christian brothers and sisters in all places,  
in praying for peace with justice,  
through him who is the prince of peace,  
Jesus Christ our Lord.  
Amen.

## Giving to church

Our Churches depend on income from fees paid for some of our services, from fund-raising, from activities at St Philip's Community Centre and – *most particularly* – from monetary gifts from worshippers and other supporters. In each of our churches, donations can be made via digital giving machines using credit or debit cards. You can use the QR codes below to give. Please speak to us for advice on gift aiding your offering, so that each £1 you give becomes £1.25 – at no extra cost to you.



Left: St Thomas and St John  
Right: St Mary



Radcliffe & Whitefield Mission  
Community

# Thy Kingdom Come Zoom Prayers Are Back!

An easy and powerful way of praying together,  
plus

a great opportunity to get to know people  
from

other churches within our *Mission Community*.

Starts on Friday 15<sup>th</sup> May, then each evening  
throughout Thy Kingdom Come (excluding  
Sundays)

@ 6pm on Zoom; simply click on the link below  
to

take part:

[https://us02web.zoom.us/j/88510585974?](https://us02web.zoom.us/j/88510585974?pwd=QUdY)

[pwd=QUdY](https://us02web.zoom.us/j/88510585974?pwd=QUdY)

[YjN6bDFoakxpZnBoY2ZDMUFoZ](https://us02web.zoom.us/j/88510585974?pwd=QUdY)

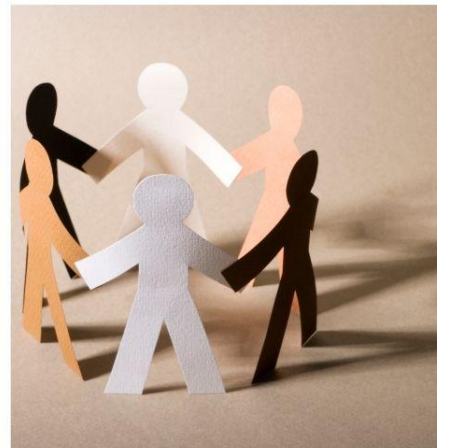
# Saturday Cafe



**Every Saturday  
10:30am - 12:30pm**

*Everyone Welcome*

**ST THOMAS & ST JOHN CHURCH  
NEW CHURCH STREET, RADCLIFFE**



Together, we can  
beat extreme poverty.

# Quiz



**Pasty and Peas**

**Drinks for sale  
at the bar**

## **Fundraising Quiz Night**

**Saturday 16<sup>th</sup> May**

7pm doors for 7:30pm start

**£7.50 for tickets**

St Philips Community Centre

Higher Dean St, Radcliffe, M26 3TE



**Buy tickets online for £8  
on Eventbrite**



**St George, Unsworth**

**Saturday 9<sup>th</sup> May**



**SPRING  
BAZAAR**

**11.30am - 2pm**

**Sale of**

**New & Nearly New Clothing,  
Shoes, Handbags, Jewellery  
Gifts, Crafts, Books, Toys  
Household (Practical & Decorative)  
Cakes, Golf, also Refreshments  
with Double Hotdogs  
Free Admission**

Being stewards of God's creation and doing our bit as Christians for the planet, if you have any of the following lying around your home then please bring them to be recycled 🌍♻️😊



## RECYCLE FOR CHARITY

**Did you know, many of your unwanted items could be recycled?**

**Do you have any of these items stuck in a drawer or cupboard ?**

**Please bring along your glasses, hearing aids, foreign currency, stamps, keys, ink & toner cartridges (branded only) & bra's & place them into the boxes provided in church.**

**All items will be collected at the monthly Mission Community Task Group meetings where they will be sorted and sent to where they are needed most.**

**Thank you**



**RADCLIFFE & WHITEFIELD MISSION COMMUNITY**

**Eagle's Wing** is a mutual support group of friends made up of local people, asylum seekers and refugees living in this area. It meets at the United reformed Church, Parsons Lane, Bury BL9 0LY, Monday, Tuesday and Thursday mornings from 10am to noon (term time only). "Come as strangers, stay as friends" – they say.

## Children Are Welcome

### At St Thomas & St John with St Philips

We have 3 ways to help your child to feel welcome in church  
Just speak to someone at the back of church

For young children we have some

#### Baby Bags

Containing some soft toys and picture books



For toddler children we have

#### Play Packs

With story books and colouring sheets



In the Children's Corner at the back of church

There are some small quiet toys, some colouring pages and reading books.

You and your child are more than welcome  
to enjoy using these resources during the service

**PLEASE STAY WITH YOUR CHILD AT ALL TIMES**



Our churchyard is maintained by a group of volunteers on a monthly basis, who try to keep on top of the cutting, trimming, weeding and tidying. We try to ensure that our grounds are a calm and welcoming environment for visiting families. We rely on the regular giving of our parishioners and one-off donations from visitors in order to find the funds to maintain our beautiful church building and grounds. If you would like to make a donation please see the information given below. Thank you

Supporting our ministry  
Radcliffe Parish Church of St Mary  
Thank you for your generosity

Please scan the QR code or go to our website at

[www.radcliffeparishchurch.com](http://www.radcliffeparishchurch.com)

and find the link to our Give a Little campaign to make a donation.

Thank you



Thank you for your kind donation!



Charity/charitable purpose verified by Give a Little  
CDPR, PCI & PCI-DSS Compliant Point of Donation

HOSTED BY  
**NEW LIFE CHURCH**


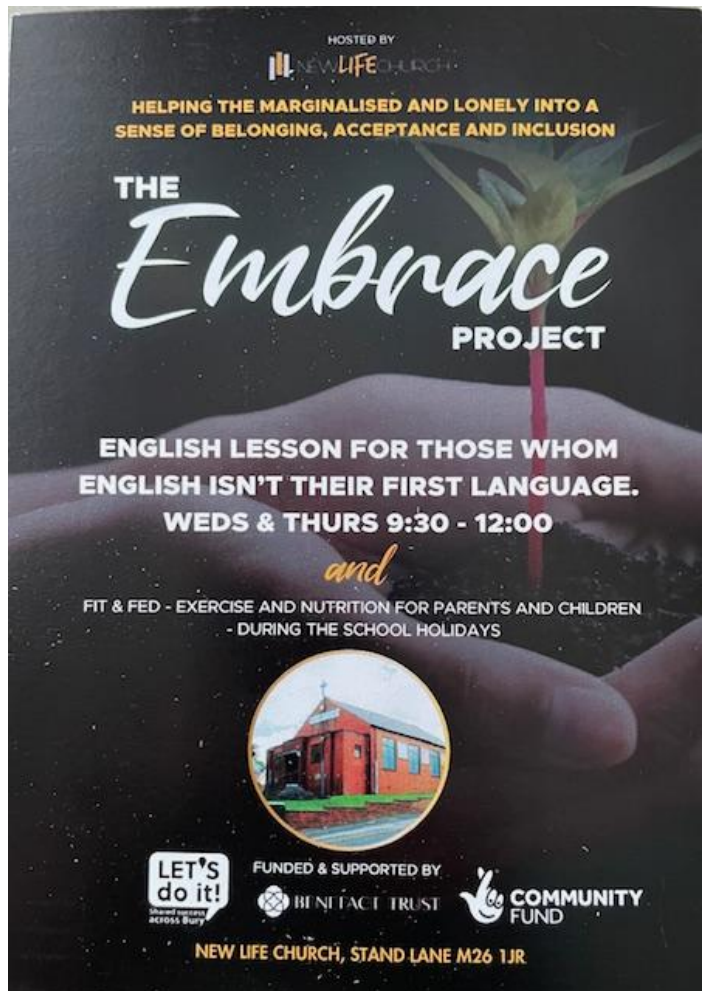
HELPING THE MARGINALISED AND LONELY INTO A  
SENSE OF BELONGING, ACCEPTANCE AND INCLUSION

# THE Embrace PROJECT

ENGLISH LESSON FOR THOSE WHOM  
ENGLISH ISN'T THEIR FIRST LANGUAGE.  
WEDS & THURS 9:30 - 12:00

and

FIT & FED - EXERCISE AND NUTRITION FOR PARENTS AND CHILDREN  
- DURING THE SCHOOL HOLIDAYS



LET'S do it!  
Small groups across the city

FUNDED & SUPPORTED BY  
BENEFACT TRUST

COMMUNITY FUND

NEW LIFE CHURCH, STAND LANE M26 1JR

Vicky at St Mary's writes: "Our St Mary's WAG's are once again taking part in the Race for Life at Heaton Park this year. This year's event is on Sunday 5<sup>th</sup> July and anyone wanting to join us can use the link below. There is a St Mary's team which you can also join once you have entered. Please speak to Vicky (07533 894392) if you need further details.

<https://raceforlife.cancerresearchuk.org/>

# CHRISTIAN LIFE & WITNESS COURSE

You are invited to come deepen your faith in Jesus Christ and discover practical ways to point others to Him during this free, engaging three-hour session.

**Saturday 30th May 2026**

**10:00am - 1:00pm**

**Bridge Community Church**

**Milltown Street / Regan Street**

**Radcliffe**

**M26 1WD**

A MINISTRY OF  
**BILLY  
GRAHAM**  
Evangelistic Association UK  
*Always Good News.*

**GODLOVESYOU**OUR**.ORG.UK/COURSES**



# WHAT MADE JESUS TURN

WITH DR. JOHN ANDREWS



GUEST WORSHIP LEADER  
PAUL CARTER

**SAT 23 MAY - 10AM - 2:00PM**

COME AND JOIN US FOR A  
SPECIAL DAY OF TEACHING

NEW LIFE CHURCH, STAND LANE M26 1JR