

# The Minsterley Parish Magazine

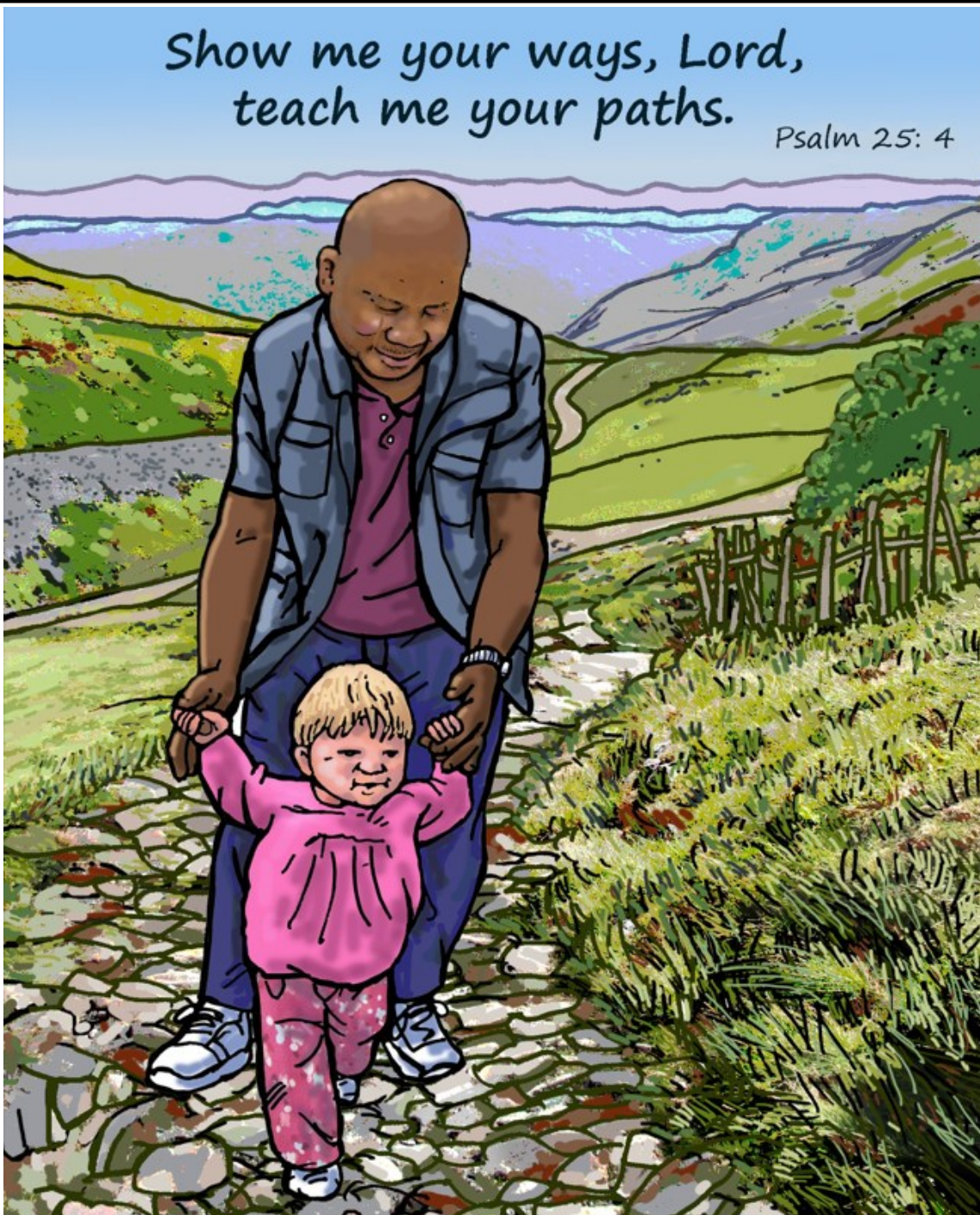
with the Stiperstones church group:  
**Hope & Shelve, Snailbeach, Habberley**



incorporating news from the Chirbury Hills benefice:  
**Chirbury, Middleton, Leighton,  
Marton, Corndon Marsh, Trelystan,**

*Show me your ways, Lord,  
teach me your paths.*

*Psalm 25: 4*





# Holy Trinity Church, Minsterley



**Rector:** Rev. Greg Smith  
(day off - Friday)  
The Deanery, Pontesbury  
07902 794653  
rectorpontstip@gmail.com

**Associate Minister:** Rev. Fran Brealey  
(days off - Mon, Fri, Sat)  
07982 324760  
revfran@btinternet.com

**Curate:** Rev. Richard Lonsdale  
(day off - Tuesday)  
The New Vicarage, Minsterley  
07922 830488  
richardlonsdale1@gmail.com

**Church Warden**  
Sarah Edwards 07971 984925

**Treasurer**  
Mike Bowen 07826 061054  
mintreasure@btinternet.com

## Church services this month

Sunday 3rd	4.00pm	Tea time service
Sunday 10th	10.30am	Holy Communion
Sunday 17th	10.30am	Minsterley Praise
Sunday 24th	3.00pm	Deanery Pentecost service in Worthen Village Hall
Sunday 31st	10.30am	Group service with the Bishop of Hereford

Please see page 34 -35 for details of services in the other churches in our Stiperstones group

## Other events this month

Sat 2nd	Big Green Day (pp 6, 13)
Thu 7th	Knitter Natter (EVERY Thursday) (p7)
Fri 8th	Vocal Workshop (p17)
Mon 11th	Crafty Monday (p13)
	Hillcrest singing (p20)
Tues 12th	Oasis meeting (p7)
	Ichthus Bible study (p15)
	"A.I. Uncovered" (p29)
	Parish Council meeting (p11)
Fri 15th	Quiz Night (p6)
Sat 16th	Plant Sale (p11)
Sun 17th	Wildlife Group walk (p15)
Tue 19th	The Gathering (p6)
Wed 20th	u3a open meeting (p20)
Sat 23rd	Organ Recital (p6)
Tue 26th	Oasis (p7)
	Ichthus Bible study (p15)
Wed 27th - Sat 30th	"Daisy Pulls It Off" (p29)

**Monthly diary for Chirbury Hills events**  
- see page 19

## Weekly events in the church (see page 31)

Mondays	3.30pm	Youth Café
Tuesdays	10.00am	Foodbank
Wednesdays	10.00am	Coffee Hub
Thursday	10.00am	Trinity Tots

The Minsterley Parish Magazine is published by Holy Trinity Church.

Copy date for the next issue is the 20th of the month

**Editor:** David Young      **Tel:** 01743 537081

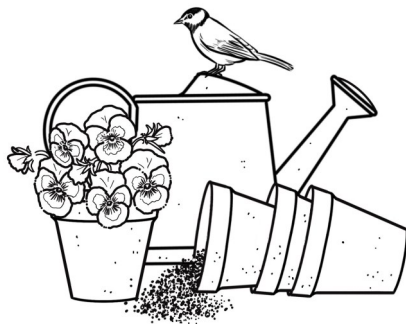
**e-mail:** MinsterleyParishMagazine@gmail.com

**To advertise:** see details on page 23

When I awoke this morning, I was puzzled by the pain in my thigh muscles. I had done nothing more strenuous the previous day than drive to the Wirral and back to see my week-old granddaughter – and I'm not that heavy on the clutch or the accelerator! However after a couple of hours of puzzlement the penny dropped. What I had forgotten was that the previous day I had initiated a lower back muscle strengthening regime (after two days it's a bit early to calculate its success), a regime that also involved putting those thigh muscles (glutes I think is the technical term) under unaccustomed stress. This is the law of unintended consequences.

This is a little like launching a bombing campaign on a country and only subsequently realizing that the same nation has the ability to disrupt 25% of the world's oil supply. Of course, both the impact on my thigh muscles from a new exercise regime and the threat to the Straits of Hormuz are foreseeable consequences. We are still in the midst of the Easter season when the world was amazed at the apparent connection between Jesus' death and resurrection.

The connection between these two events is absolutely central to St Paul's writings. 2 Corinthians 5 v.15 says:

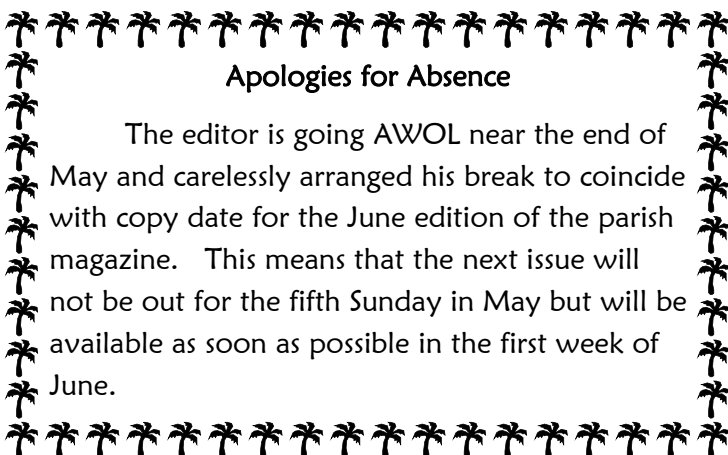


*“Christ died for all, that those who live should no longer live for themselves but for Him who died for them and rose again.”*

We might feel that St Paul had an advantage over the other apostles in that he came to the Christian faith a little later, when it was already accepted that the resurrection was a central tenet of the faith. Those other apostles had received countless predictions and prophecies from the lips of Jesus but had failed to understand how His death would lead to His victory over death.

We ought to marvel at how God uses the Roman authorities and Jewish religious leaders' inability to see how the execution of the supposed Messiah would supercharge this new religious movement rather than quash it. God is always at least three steps ahead of us, working all things together for the good of those who love Him (Romans 8 v.28). This should give us peace and confidence in the face of our own trials and worries. It should also give us a degree of peace and confidence as we look upon the turmoil of the world, concerned as we are as to how it will all end. He's got it!

Greg Smith


  
**Apologies for Absence**
  
 The editor is going AWOL near the end of May and carelessly arranged his break to coincide with copy date for the June edition of the parish magazine. This means that the next issue will not be out for the fifth Sunday in May but will be available as soon as possible in the first week of June.



## What's On!

<b>16 MAY</b>	<b>ANNUAL PLANT SALE</b> <small>plants, cakes, tombola and raffle on the Crown and Sceptre car park</small>
<b>31 MAY</b>	<b>TRINITY SUNDAY LUNCH</b> <small>prebooking required. Speak to Sarah on 07971 984925</small>
<b>20 JUNE</b>	<b>CLOTHES SWAP</b> <small>at Snailbeach Village Hall</small>
<b>11 JULY</b>	<b>BINGO NIGHT</b> <small>eyes down for a full house!</small>
<b>15 AUG</b>	<b>MINSTERLEY SHOW</b> <small>visit us at the refreshments tent for homemade sandwiches and cakes</small>
<b>12 SEPT</b>	<b>OF ONE ACCORD CONCERT</b> <small>an evening of music and entertainment</small>
<b>12 &amp; 19 SEPT</b>	<b>RIDE &amp; STRIDE</b> <small>sponsored walk for Shropshire Historic Churches Trust</small>
<b>4 OCT</b>	<b>HARVEST LUNCH</b> <small>celebrating our rural community</small>
<b>14 NOV</b>	<b>SOUP AND A SANDWICH</b> <small>our take on a lunchtime coffee morning!</small>
<b>12 DEC</b>	<b>CHRISTMAS FAIR</b> <small>cakes, crafts, food, music and Santa</small>
<b>DEC</b>	<b>CHRISTMAS EVENTS</b> <small>more to follow...</small>

## Deanery of Pontesbury

Rural Dean: Rev Greg Smith

telephone: 07902 794653 • email: rectorpontstip@gmail.com

### Thank 'heavens' for Thomas

I appreciate that when you read this article, we will be in May, but as I sit and write it we have just had the second Sunday of Easter where our focus was on 'doubting Thomas' – poor old Thomas forever associated with doubt. But is that a bad thing necessarily? The fact that the gospel writer John recorded it in the way that he did, suggests that he at least thinks that there was some divine purpose in this seemingly random encounter.

We have no idea where Thomas was when the other ten disciples plus everyone else met the risen Christ. Scripture is silent as with many of Jesus' encounters we are not told names, reasons, places or any key 'evidence' – we are simply given a story to interpret. Maybe like many of us, when overwhelmed with grief, we just seek out some time alone, away from those who would seek to try to 'explain' or make sense of things. We simply want to journey with grief as best we can.

But John's gospel opens with what is known as the prologue in chapter 1. It is an incredibly profound statement about 'the beginning', a fresh look at Genesis 1. He declares this Jesus to be the Word, which was both with God and was God. Then John tells us about Jesus' adult life, three years of his friendship, love, teachings, encounters, stories, healings and so on; all leading to the terrible events of Good Friday. But then remarkably, John brings his gospel to an end with a book-end story that matches the opening declaration of who Jesus is: Thomas' encounter declares 'my Lord and my God.' The first time Jesus is identified as God since the prologue.

Actually John loves a 'book-end' style, as Easter begins and ends with a meal: The Last Supper on Thursday and the breakfast camp fire on the shore of Galilee when the act of re-bonding takes place with Peter following his denial.

But fundamentally, Thomas is an encourager. It is reassuring for all of us who often face moments of doubt, or need reassurance, or a little positive hope in our lives that this is not something unique

to us, but in fact even in Jesus' inner circle there were those who felt the same. I don't know about you, but for many people their lives are a tightrope – with faith on the one hand and doubt on the other, with highs and lows, with good days and bad days, and Thomas says to all of us: "I know, I've been there..." But what got him through it? Simply looking at his Lord, not (I think) with his eyes, but with the eyes of his heart. Allowing his God to minister directly into that place, not his mind (which holds reason and logic) but his heart – the seat of love, the temple within.

I think that John knew that too, hence his inclusion of the Thomas story and the lack of other detail. Did Thomas actually reach his hand into Jesus' side? John doesn't tell us, because it doesn't matter. So thank you God for Thomas, I say!

**Do you believe because you see?  
No. You see because you believe.**

A prayer:

*Thank you, 'my Lord and my God' for the example of Thomas which encourages us in times of doubt; thank you too for the example of Peter when we find that we deny you; for the example of Nicodemus, when we seek you by night so that others won't see, and for all of the disciples when all we want to do is run away.*

*Thank you Lord that you love us despite our failures; you meet us in our need, you lift us out of darkness and into your glorious light. As we walk on with you towards Pentecost, may our lives radiate your glory and our mouths shew forth your praise.*

*Amen.*

Rev David Moss  
Westbury



Deanery News editor: Ann Jones ([annmorganjones456@gmail.com](mailto:annmorganjones456@gmail.com))

Copy to be submitted by 10<sup>th</sup> of previous month please.

## World News . . . .

. . . .or “some more of the items you are not likely to see on the TV news”

### Nepali pastor acquitted of illegal conversion charges

A pastor in Nepal has been acquitted of charges of illegal religious conversion of schoolchildren in a case lasting 15 months.

The Kailali District Court in the western city of Dhangadhi dismissed all charges because of a lack of evidence against Pastor Janmajaya Bhattarai on 24th March, concluding a legal battle dating back to December 2024.

Pastor Bhattarai’s arrest followed days after he and his team distributed 30 bags and clothing items to underprivileged students. The pastor had given out gifts as a Christmas tradition for several years at the request of local schools, including Shree Bal Kalyan Secondary School and Shaheed Smriti Madhyamik Vidhyalaya.



Pastor Janmajaya Bhattarai  
[Image credit: Kathmandu Media Publications]

When Bhattarai broadcast the event on his Facebook page, religious extremists lodged a protest. Several Hindu members of the school management committee complained that the pastor was evangelising students in an attempt to convert them, contrary to the agreed terms of the gift distribution event.

Bhattarai was arrested on 24th December 2024 and released three weeks later on bail of 250,000 rupees (£1,260).

“I feel relieved that the court dismissed the charges,” Bhattarai commented. “The judgement could set a precedent for future cases involving minorities against harassment and hostility for practising and propagating one’s religion.”

Officially a secular state since 2008, Nepal’s 2015 constitution guarantees freedom of religion but outlaws conversion “to another religion.” A law introduced in 2018 made it an offence, punishable with five years in jail, to attempt to convert a follower of a religion “being practised since ancient times.” This is interpreted as a religion passed down through at least three generations, a ruling that provides protection for Hindus and Buddhists but withholds it for most Nepali Christians, who are either first-generation or second-generation believers.

### Up to 60 Christians killed in Congo after rejecting Islamic State “generous offer”

Up to 60 Christians were massacred by Islamists in the province of Ituri, north-eastern Democratic Republic of the Congo (DRC), on 1st April. A source affiliated to Islamic State (IS – also known as ISIS, ISIL, Daesh) reported that its fighters “targeted Christians” after they “rejected the generous offer made to them by Islamic State, based on the just rulings of Islam”.

This “generous offer” was likely a demand for members of the Christian community of Bafwakoa, a village in the territory of Mambasa, to convert to Islam or accept *dhimmi* status as subjugated, supposedly protected, people.

Christian Alimasi, a local official, said that some of the victims had been killed with machetes and that two people had been abducted. Additionally, 44 houses in the village were burned.

Islamic State Central Africa Province (ISCAP) has targeted Christians across north-eastern DRC since pledging allegiance to IS in 2017. In a July 2025 statement, ISCAP declared, “Let the Christians of Africa and their Crusader armies know that there is no security for you except by Islam or *jizya*.” In classical Islam, *jizya* is a tax paid by non-Muslim “People of the Book” – that is, Jews and Christians – as a sign of their subjugation to their Muslim rulers.

# The Gathering

An evening of Praising & Worshipping God

*Encourage one another and build each other up, just as in fact you are doing.*

(1 Thessalonians 5: 11)

Everyone welcome

**Refreshments from 7.00 p.m.** | **Tues 19th May, 7.30 p.m. start**

Marton Village Hall

### Annual Parochial Church Meeting - 23rd April

If you would like to see the Holy Trinity Church Minsterley annual report for 2025 there is a paper copy in the church. The treasurer's report will be available imminently. For your own digital copy please email Caroline Holloway at: [minsterleychurchsecretary@gmail.com](mailto:minsterleychurchsecretary@gmail.com).

**St George's Church  
Pontesbury**

## FREE ORGAN RECITAL

(Retiring collection for St George's)

WITH  
**RICHARD WALKER**  
ARCO, FRCO

On  
**Saturday 23rd May at 11.00am**

Coffee and refreshments from 10.15am

**Richard Walker – Assistant Director of Music at St Chad's Church, Shrewsbury**

Richard studied organ with David Willcocks. His career has been largely in teaching, first at The Edinburgh Academy, and then as Director of Music at Daniel Stewart's and Melville College Edinburgh (1975 – 80), The Leys School Cambridge (1980 – 85), and Harrow School (1985 – 2005). He was also Assistant Organist at St Mary's Episcopal Cathedral Edinburgh and subsequently Organist at St John's, Princes Street, Edinburgh. He has given recitals all over the UK, and also in Germany and the USA.

## REA VALLEY BIG GREEN DAY IN PONTESBURY

SATURDAY MAY 2<sup>ND</sup> 2026 10. AM TO 3.30PM

START AT SCHOOL GREEN TO GET YOUR MAP!

- Plant Sale at the Pavilion
- Children's Activities at St George's
- Meet an Owl!
- Stalls at the Public Hall
- BIRDSONG WALK. 9.30 PONTESFORD HILL
- talks and refreshments
- community garden tours
- Family workshop - Why Nature Matters

Shrewsbury YOUTH FOR CHRIST

# THE BIG Quiz Night!

Email: [hello@s-yfc.org](mailto:hello@s-yfc.org)

## FRIDAY 15TH MAY

Join us for a fun night of quizzing whilst supporting the work of Shrewsbury Youth for Christ! Refreshments will be available for donations, but you are also welcome to bring your own drinks.

- 7 PM START (DOORS OPEN AT 6:30PM)
- FRIDAY 15TH MAY 2026
- CHRIST CHURCH BAYSTON HILL
- £5 PER PERSON (TICKETS AVAILABLE ON THE DOOR)

**Prizes for the top three teams!**

**illuminate** Illuminate Christian bookshop will run a bookstall on the night and donate 10% of profits towards Shrewsbury Youth for Christ.



Rea Valley  
foodbank



Supporting those in food crisis within the Rea Valley Community

### IMPORTANT NOTICE

Having a new Bank Account means we urgently need missing contact information from some regular financial donors. As you will know from the last newsletters, Rea Valley Foodbank is now a registered charity and we are required to set up a new bank account. Our treasurer will be in contact soon with details and we have most of our regular donors' email addresses. If you have previously received emails from us, you do not need to do anything yet. We value these financial donations so much and they are the lifeblood of our service. **If you make financial donations, or you know someone who does, but have never received an email from our treasurer, please contact Jonathan Brown (07497 142485)** (do leave a message or text) or email him at [reavalleyfoodbank@gmail.com](mailto:reavalleyfoodbank@gmail.com).

### Please help by Donating Packaged Food

We are very grateful to everyone who donates what they can, when they can, as it makes a difference to how much we must buy in. You can drop off in-date, unopened packaged food and toiletries at: Pontesbury Co-op and Longden Village Stores, or Worthen Village Hall on the third Wednesday of each month between 8.30 - 11am. Foodbank Donation boxes are in many churches; please see our website for a full list <https://reavalleyfoodbank.co.uk/donating/>. These are the top five basic items we must regularly buy in: Tinned meat, fish, vegetables and fruit; and long-life milk.

We do not have refrigerated storage and so we cannot take perishable items. We can take small quantities of fresh fruit and vegetables, but please only drop off when the Foodbank is open and talk to our volunteers or contact us in advance.

### To use the Foodbank or find out more:

Call for a chat with Rev Greg Smith (07902 794653) or Rev Richard Lonsdale (07922 830488), or ask your local clergy, GP, school, nursery, social/health worker, housing provider or other support agency. See our website: <https://reavalleyfoodbank.co.uk/> or Facebook.

Jean Garner

# Oasis

FREE lunch & companionship  
for the bereaved

2nd & 4th Tuesdays • 12pm - 1.30pm

Minsterley Methodist Chapel,  
Horsebridge Rd, Minsterley

For more information, contact Heather Ryder  
on 01743 790359 or ryder928@btinternet.com



The Crown & Sceptre Presents

## KNITTER NATTER

EVERY THURSDAY

10am - 1pm

Hot drinks & cake available to buy  
throughout the session!  
All crafters welcome be it knitting or  
crocheting & other crafts!  
Free to join us, Just bring your  
projects with you!



Made with PosterMyWall.com

Are YOU thinking of selling  
your home?

Shrewsbury  
01743 343343

Roger  
Parry  
& Partners

BOOK YOUR  
FREE VALUATION  
TODAY...

- High Street Offices
- No contract tie-ins
- Expert knowledge
- Villages & Rural

Your Trusted Local  
Property Professionals



Your Local Estate Agents for  
Sales & Lettings

WWW.ROGERPARRY.NET

Please support our advertisers



Simplifying Computers  
and Technology  
across Shropshire



ShropTech help local businesses and home users with:

- Backing up your data – e.g. emails and photos from your computers and mobile phones, etc. – the best protection from ransomware
- Computer upgrades and repairs, no fix, no fee
- Fixing internet / WiFi problems
- Domain, Website and Email from £49 per year, £299 setup
- Upgrading to Windows 11
- Data recovery, transfer to new devices

We sell 3 grades of Electronics – New, Open Box or 2nd User, all minimum 1 year warranty: Laptops, Desktops, TVs, Mobiles, Tablets, Security Cameras, WiFi

 01743 790968

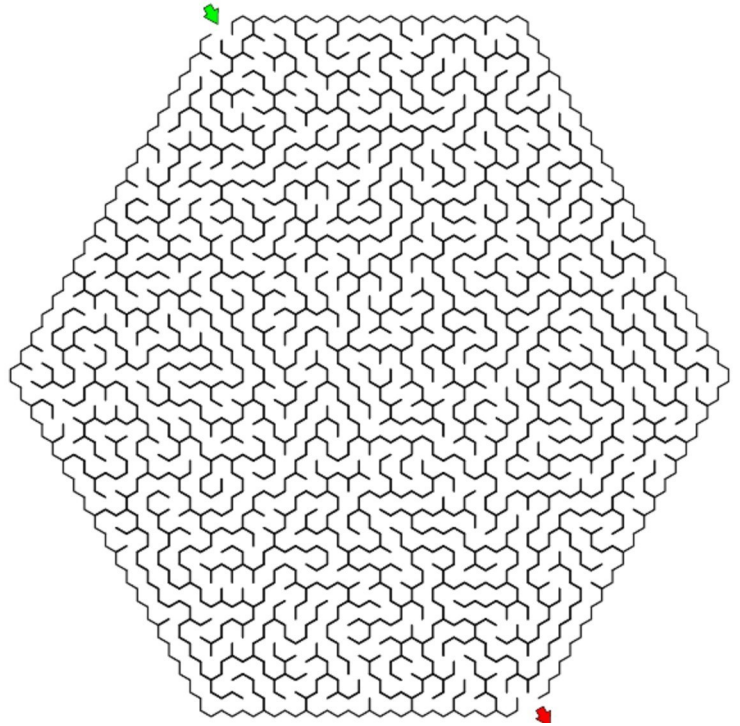


office@shroptech.com

Data Protection Act 2018: Shropshire Technology Ltd. is registered with the ICO, your data is safe with us

## Puzzle Page

8				4				5
5		7			8		6	
	4			5			2	
					9	3		2
9				1				7
4		1	7					
	8			9			7	
	7		2			5		6
1				7				9



### Wordsearch for May 2026 - A prayer for the Middle East

Lord, we pray for the conflict in the Middle East, and how it is damaging the lives of so many millions of people. You, Lord, make wars cease to the end of the earth; You break bows, shatter spears, and burn shields with fire

[Psalm 46:9]. Through Your Holy Spirit, move upon the leaders of the nations to de-escalate this crisis. We hear of wars and rumours of wars (Matt. 24:6], but You Lord are our rock, our fortress and our deliverer. Our hope is in You. Let Your name be exalted among the nations; may You be exalted in the earth [Psalm 46:10]. Amen.

*Kyrie eleison – Lord have mercy.*

Middle	Crisis
East	Many
Conflict	Lives
Pray	Millions
Damage	Lord
War	Our
Cease	Rock
Earth	Fortress
Break	Deliverer
Bows	Hope
Shatter	Kyrie
Spears	In
Burn	You
Shields	Mercy
Fire	

D	F	E	E	E	G	O	D	M	C	W	E
Y	I	Y	A	R	P	S	U	R	A	R	I
C	R	I	S	I	S	O	S	R	O	N	R
R	E	T	T	A	H	S	H	C	P	L	Y
E	R	A	I	A	I	S	K	F	E	I	K
M	E	T	C	I	L	F	N	O	C	V	A
M	V	I	E	A	I	H	T	R	A	E	E
M	I	L	L	I	O	N	S	T	U	S	R
R	L	D	A	M	A	G	E	R	A	B	B
U	E	O	D	R	S	H	I	E	L	D	S
O	D	C	E	L	E	U	C	S	W	O	B
Y	O	E	S	P	E	A	R	S	O	S	M

## MINSTERLEY PARISH HALL

Available for hire

Versatile space of 3 rooms that can be used separately or altogether.

Ideal for meetings, birthdays, weddings.

For more details or to book contact Gill Gawthorne  
Telephone: 07775 334661 or email  
[bookings@minsterleyparishhall.co.uk](mailto:bookings@minsterleyparishhall.co.uk)



## The Flower Shop, Minsterley



3 Station Road, Minsterley  
01743 791860

For all your floral requirements,  
fresh eggs and a small selection of groceries.

We are open as follows:

Tuesday – Friday: 9.00am – 4.00pm

Saturday: 9.00am – 12 noon

**We look forward to seeing you.**

### MINSTERLEY 59 CLUB WINNERS

Draw 11	18 <sup>th</sup> March	No. 54	Jan Gittins
Draw 12	25 <sup>th</sup> March	No. 43	Susan Bates
Draw 13	1 <sup>st</sup> April	No. 48	Jeannie Buckle
Draw 14	8 <sup>th</sup> April	No. 37	Beryl Allen
Draw 15	15 <sup>th</sup> April	No. 25	Geoff Rogers

*Today is the oldest you've ever been,  
yet the youngest you'll ever be,  
so enjoy this day while it lasts.*

Please support our advertisers

# SHROPSHIRE HILLS GARDEN SERVICES

[www.shropshirehillsgardenservices.co.uk](http://www.shropshirehillsgardenservices.co.uk)

All aspects of gardening and landscaping services

Get in touch to discuss your needs  
and get a free quote



Tools powered  
by renewable energy

Tel: 01743 632703 or 07971 679702

[will@shropshirehillsgardenservices.co.uk](mailto:will@shropshirehillsgardenservices.co.uk)

## Minsterley Parish Council

### PARISH COUNCIL ANNUAL REPORT 2026

Last May, six Members from the previous parish council put their names forward to stand as candidates for the election of a new parish council. This left three vacancies to be filled by co-option, and the parish was fortunate that three residents agreed to join as members, to help with parish matters.

Monthly meetings continue to take place to discuss and implement decisions regarding footway lighting, together with the joint working relationship with Pontesbury regarding the solar lighting on the cycle/footway between the two villages.

Also meetings take place during the twelve months between the three parishes of the Rea Valley area: Hanwood, Pontesbury and Minsterley, who work together to deliver the A.N.P.R. camera scheme and local nature recovery issues.

The parish continues to operate the playground areas, the playing field, bus shelters and the area around the Square.

The parish spring bulbs planted every year by Tony Bishton have provided beautiful displays this year. Also last Christmas arrangements were implemented for the display of Christmas trees and lights on the Parish Hall, and plans are to increase the display to both ends of the hall this coming Christmas.

Flooding issues remain on the agenda every meeting, and the council is very grateful to Doug Jones for all the time and work he dedicates to these matters.

All planning applications are discussed, and comments are forwarded to the Planning Department on behalf of the parish.

The Parish continues to report highway issues to Shropshire Council but also recognises the difficult financial position Shropshire Council is experiencing.

Continued requests by residents for a 40mph speed restriction area on the A488 on the south side of the parish remain an important issue for the Council.

After the first twelve months, the work and commitment to the Minsterley Meadows Project is a great asset in the parish. Thanks go to Sarah Wallace-Johnson and her team for all their time and work in this area.

As always the Parish Council appreciates the work that Ian, the Parish Clerk, his assistant Sabrina and caretaker contractor Steve, give to the village.

Finally thank you to the members of the parish council who give their time to support the residents and the area. With a special thank you to Liz Penrose for clearing the verges of litter which would be a blight in our village.

The next monthly meeting of Minsterley Parish Council is on Tuesday 12<sup>th</sup> May at 7.00pm in Minsterley Parish Hall.

**Geoff Rogers**  
**Chairman, Minsterley Parish Council**  
[www.minsterley.org.uk](http://www.minsterley.org.uk)

To contact the parish council, e-mail:  
[clerk@minsterley.org.uk](mailto:clerk@minsterley.org.uk)



Please support our advertisers

**THE LOCAL FAMILY BUTCHER**  
**SMITHS BUTCHERS MINSTERLEY**  
**HOLLY HOUSE, MINSTERLEY, SY5 0BA**

tel: 07807 898404

email: gawain101@hotmail.com

**FREE LOCAL DELIVERY SERVICE AVAILABLE**



**WE ARE TAKING ORDERS WHICH CAN  
BE DELIVERED FREE OF CHARGE.**

**KEEP AN EYE OUT FOR WEEKLY SPECIALS  
ON FACEBOOK OR ON MY ADVERTISING  
BOARD OUTSIDE THE SHOP**

# CRAFTY MONDAYS

## CRAFT AND CHAT

2<sup>ND</sup> MONDAY OF THE MONTH  
LOUNGE AREA

AT

MINSTERLEY METHODIST CHURCH

7 PM TO 9 PM

FOR MORE INFORMATION CONTACT  
LESLEY ON 01743-791045  
OR SANDRA ON 01743-891861  
OR  
JUST TURN UP ON THE NIGHT  
AND JOIN US!



Pontesbury & District  
Gardeners Association

Unfortunately we have had to cancel our May social evening, Spring into the Garden, as a number of the stallholders were unable to attend. We hope that some of the plant sales will be held at the Trading Post on a Saturday morning in the near future.

The Trading Post is situated in the Old Station buildings on Station Road and is open every Saturday from 9.30am to 12 noon.

Rob Dixon

[robedixon@btopenworld.com](mailto:robedixon@btopenworld.com)

*A father was approached by his small son who told him proudly, "I know what the Bible means, Daddy."*

*His father smiled; "Okay. What does the Bible mean?"*

*"It's easy, Daddy," the young boy replied excitedly, "It stands for 'Basic Information Before Leaving Earth'."*



## WHY NATURE MATTERS Free Workshop for Parents and Children

Saturday 2nd May 2pm - 3.30pm

The Pavilion, Pontesbury, Shropshire, SY5 0RF

This one-and-a-half-hour session for parents and children to explore how we feel and behave towards the rest of nature. The workshop will involve creating a story with words and pictures.



Join us for an **informative, fun and interactive workshop** to discover what's happening to our planet, why it's happening and what you can – and can't – do about it.



Meet others who share your concerns, hear about what is happening in your local area and how you can get involved.



Reserve your **FREE** place now.

Email [clerk@pontesbury-pc.gov.uk](mailto:clerk@pontesbury-pc.gov.uk)

Pontesbury Deanery

# Pentecost Praise

Let's Worship Together!

Sunday  
May 24<sup>th</sup>

3 pm

Worthen Village Hall

SY5 9HT

**Holy Communion service  
followed by tea and cake**



# LOCAL MILK IN GLASS BOTTLES,

from our Milk Vending Machine.

AVAILABLE  
AT HIGNETTS  
OF PONTESBURY

-----  
**£1.70 for 1 Litre**

Empty bottle is £1.20.

Then simply refill  
your bottle for **£1.70**  
each time.

-----



[www.propergooddairy.co.uk](http://www.propergooddairy.co.uk)



# REA VALLEY COMMUNITY WILDLIFE GROUP

## MONTHLY WALKS : 2026



Join our friendly Rea Valley Community Wildlife Group at our monthly local walks - providing an opportunity to discover local flora and fauna together.

**Free to attend and no booking required.**

<b>Sun 18<sup>th</sup> Jan</b> 10am - 1pm Stapeley Saunter Mitchell's Fold Car Park <small>cabbages.update.quantity</small>	<b>Sat 14<sup>th</sup> Feb</b> 10am - 1pm Snailbeach Woods Walkabout Snailbeach Car Park <small>works.plenty.ecologist</small>	<b>Sun 15<sup>th</sup> Mar</b> 10am - 1pm Earls Hill Lope Pontesford Hill Car Park <small>marginal.owns.transcribes</small>	<b>Sat 18<sup>th</sup> Apr</b> 10am - 1pm Gatten Yomp Gatton Daffodil Car Park <small>hedge.scales.freshest</small>
<b>Sun 17<sup>th</sup> May</b> 10am - 1pm Buxton Hill Stroll Viewpoint Car Park Tankerville <small>games.cheeses.strongman</small>	<b>Sat 20<sup>th</sup> Jun</b> 10am - 1pm Minsterley Mooch On street, Minsterley <small>mush.harsh.factories</small>	<b>Sun 19<sup>th</sup> Jul</b> 10am - 1pm Hinton Hike Station Road Car Park, Pontesbury <small>irritated.swift.freedom</small>	<b>Sat 15<sup>th</sup> Aug</b> 10am - 1pm Pulverbatch Plod Pulverbatch Car Park <small>wriggle.disbelief.housework</small>
<b>Sun 20<sup>th</sup> Sep</b> 10am - 1pm The Hollies Bimble Snailbeach Car Park <small>works.plenty.ecologist</small>	<b>Sat 17<sup>th</sup> Oct</b> 10am - 1pm Hope Valley Amble Hope Valley Nature Reserve Car Park <small>movements.ankle.logs</small>	<b>Sun 15<sup>th</sup> Nov</b> 10am - 1pm Eastringe Excursion Eastringe Wood Car Park <small>buzzards.uniforms.swift</small>	<b>Sat 12<sup>th</sup> Dec</b> 10am - 1pm Stiperstones Stomp Stiperstones Inn Car Park <small>foods.grownup.overdone</small>

**Facebook**  
[www.facebook.com/groups/reavalleycwg](http://www.facebook.com/groups/reavalleycwg)

**More Information**  
[www.shropscwgs.org.uk/reavalley-wildlife-group/](http://www.shropscwgs.org.uk/reavalley-wildlife-group/)



**JOIN US TODAY!**  
 Email: [reavalleycwg@gmail.com](mailto:reavalleycwg@gmail.com)

Active and vibrant WhatsApp group also available

## Bible Readings in church this month



Why not read these at home if you are unable to join us for Sunday worship?

<b>3<sup>rd</sup> May</b>	Acts 7.55-end Psalm 31. 1-5 John 14. 1-14
<b>10<sup>th</sup> May</b>	Acts 17.22-31 1 Peter 3.13-end John 14. 15-21
<b>17<sup>th</sup> May</b>	Psalm 68.1-10 Acts 1.6-14 John 17.1-11
<b>24<sup>th</sup> May</b>	1 Corinthians 12. 3b-13 Acts 2. 1-21 John 20. 19-23
<b>31<sup>st</sup> May</b>	Psalm 8 2 Corinthians 13. 11-end Matthew 28. 16-end



Shirley caught the flower ladies red-handed, dealing trugs

**Spring tidy up in the churchyard**

A huge thank you to everyone who helped at the spring tidy up at Holy Trinity church on Saturday 25th April. The sun was shining, the cake was plentiful and much cleaning, clearing, sweeping and tidying was done.

A great team effort, thank you all.

Sarah Edwards

Your word is a lamp to my feet  
 and a light to my path.  
 Psalm 119 : 105

## ICHTHUS



The Spring session of 'Ichthus' meetings concludes this month. Anyone with a desire to study the Bible with others is welcome to come.

Meetings start at 2.30pm on Tuesday afternoons.

Liz Jackson 01743 791352

May 12th	The Blessing Snailbeach	Psalm 68:1-10	Acts 1:6-14	John 17:1-11
May 26th	Brookfield Waterwheel	Psalm 8	2 Corinthians 13:11-end	Matthew 28:16-end

Investment Planning  
Retirement Planning  
Inheritance Tax  
Planning  
Intergenerational  
Planning  
Mortgages

It's important you make  
the right decisions.



lewis wealth  
management

Lewis Wealth Management Ltd is an Appointed Representative of and represents only St James's Place Wealth Management plc (which is authorised and regulated by the Financial Conduct Authority) for the purpose of advising solely on the Group's wealth management products and services, more details of which are set out on the Group's website [www.sjp.co.uk/products](http://www.sjp.co.uk/products). The St James's Place Partnership and the titles 'Partner' and 'Partner Practice' are marketing terms used to describe St James's Place representatives.

With over 30 years experience, we offer friendly professional advice on a wide range of financial services.

Lewis Wealth Management Limited,  
St. James's House, Anchorage Avenue,  
Shrewsbury SY2 6FG

Office: 01743 444 700

Mobile: 07967 430 392

Email: [Neil.Lewis@sjpg.co.uk](mailto:Neil.Lewis@sjpg.co.uk)

Web: [lewiswealthmanagement.co.uk](http://lewiswealthmanagement.co.uk)

Your home may be repossessed if you do not keep up repayments on your mortgage.

Partner Practice

St  
James's  
Place

Approved 08/12/2025

Please support our advertisers

## STRENGTH & STABILITY CLASS FOR AGES 60+



Tuesdays 9.30am—10.30am  
at Minsterley Parish Hall

Thursdays 10.00am—  
11.00am

at The Pavilion Community Hub,  
Pontesbury

Booking is essential.

Contact Dan Lewis on 07904 338 791

or

[danlewisfitness@btinternet.com](mailto:danlewisfitness@btinternet.com)

## Snailbeach WI

Be inspired & widen your  
circle of friends  
Come and see what we have to offer.  
Give it a try—  
you might be surprised!



We meet in Snailbeach Village Hall, SY5 0NX,  
on the second Thursday of the month at 7.30pm  
(2pm Dec, & Jan)

For more information contact Sue:

tel: 07375 463536

e-mail: [suexjohnson@gmail.com](mailto:suexjohnson@gmail.com)

theWI  
INSPIRING WOMEN





THE CHURCH OF ENGLAND

## Sunday services in the Chirbury Hills Group of Parishes May 2026

within the Deanery of Pontesbury and the Diocese of Hereford

	Holy Trinity Leighton	St Mary's Trelystan	St Michael's Chirbury	St Mark's Marton-in-Chirbury	Holy Trinity Middleton-in-Chirbury	Corndon Marsh Chapel
Sun 3rd	10.00am Morning Worship Aster		11.15am Holy Communion Richard			6.00pm Evensong Fran
Sun 10 <sup>th</sup>	No Evensong 5pm Deanery Choral Evensong at			9.00 am  Holy Communion Richard	11.15 am  Holy Communion Richard	
Sun 17 <sup>th</sup>		3.00pm Holy Communion Greg	No service		10.00am Family Worship Allen Marsden	
Sun 24 <sup>th</sup> Pentecost	3pm Deanery Pentecost Service - Worthen Village Hall					
Sun 31 <sup>st</sup>	10.30am Holy Trinity, Leighton - Joint Benefice Service Richard					

*You are warmly invited  
to join us at any of our  
churches!*

THE CHIRBURY HILLS



GROUP OF PARISHES

### Chirbury Hills Benefice contacts

**Local Lay Minister:** Kay Yeates  
01938 561 640  
[km\\_yeates@yahoo.co.uk](mailto:km_yeates@yahoo.co.uk)

**Lay Worship Leader:** Aster Meyer  
[aster.meyer@pm.me](mailto:aster.meyer@pm.me)

**Safeguarding Officers:**  
Kay Yeates (as above)  
Chris Jerman  
[chrisjerman@yahoo.co.uk](mailto:chrisjerman@yahoo.co.uk)

**Churchwardens:**

**St. Michael's Chirbury**  
Tony Sheppard 01938 561821

**St. Mark's Marton**  
Maureen Jenkins 01938 561645

**Holy Trinity Middleton and The Marsh**  
Kay Yeates 01938 561640  
Emma Bailey-Beech 01686 669971

**Holy Trinity Leighton**  
John Markwick 01938 555043  
Sally Beech 01938 554942

**St. Mary's Trelystan**  
Janet Jones 07967 312460

## Chirbury Hills group of churches

### May - dates for your diary

- Sunday 3rd Bluebell Walk -  
see poster on next page
- Mon 11<sup>th</sup> Middleton and the Marsh parishes  
APCM - see poster below
- Tues 12<sup>th</sup> Coffee and Chat, Chirbury Café,  
10.30am
- Wed 13<sup>th</sup> Closing date for response to advert for  
new rector and rural chaplain - please  
pray for potential candidates.
- Sat 16<sup>th</sup> Messy church and Chirbury Jumble  
Sale – see posters adjacent.
- Tues 19<sup>th</sup> Meeting of parish representatives to  
discuss orientation day for candidates
- Sunday 24<sup>th</sup> **Deanery Pentecost Service**, 3pm  
Worthen Village Hall – please support  
this, it was an uplifting occasion last  
year.
- Sunday 31<sup>st</sup> **Benefice service**, Holy Trinity, Leighton  
10.30am



**JUMBLE SALE**

Our Annual Jumble Sale will be  
on Saturday 16<sup>th</sup> May  
in aid of St Michael's Church,  
Chirbury.

Please keep any unwanted items of clothing,  
shoes, bric a brac, books, plants. We would be  
delighted to receive any contributions.

Looking forward to  
seeing you all. It is always  
good fun.

Caroline Slowik



**Messy Church**  
**Saturday May 16<sup>th</sup>**  
**Chirbury Church 10.30**  
(at the same time as the Jumble Sale)  
All the usual crafts, icing  
biscuits, a delayed egg hunt,  
planting sunflower seeds and  
much more. Talking about  
Pentecost and the Holy Spirit.  
Do come and join us, all very  
welcome



**Walk along the River Camlad & into  
a Bluebell Wood at  
Heightley, Chirbury, SY15 6BW on  
Sunday 3<sup>rd</sup> May 2pm.**

**Walking from 2.00pm last walkers 3.30pm**

£5 per adult to include tea and cake.

Proceeds to Chirbury Church.

Everyone welcome, bring wellies if it is damp as the route is across open fields, along the unfenced riverbank and into a wood where the path is very narrow, steep and very uneven underfoot.

Brambles are present, no access for pushchairs or mobility aids.

Approx. distance to Blue Bells ½ mile.

Children to be always accompanied as the river is not fenced off.

**Dogs on leads as ewes & new-born lambs in fields and  
young cattle nearby.**



Contact tel: [Tony Sheppard 0798671518](tel:0798671518)

Depending on season the bluebells may be passed their best.

## Lent lunches

A big thank you to all who provided food, waited on tables, gave raffle prizes and supported the Lent lunches at Marton Village Hall. A total of more than £1,000 has been raised; well done Maureen and her team.

These lunches are a great social event bringing in people to catch up with friends new and old. It would be great to have more of these events throughout the benefice during the year.

Kay Yeates

## Sing a Song at Hillcrest . .

On Monday 11th May some folk from Holy Trinity Church will be singing songs for the residents of Hillcrest Manor Nursing Home.

We would welcome more singers to benefit both volume and residents.

Just turn up at 1.45pm or contact me for more information.

Thank you.

Caroline Bowen



Join us for our next Open Meeting on **Wednesday 20th May 2026 2pm** at Minsterley Parish Hall, for an engaging and thought-provoking talk on the work of the **Commonwealth War Graves Commission (CWGC)**.

Founded by Royal Charter in 1917, the CWGC work on behalf of six nations to commemorate the 1.7 million men and women from the Commonwealth who lost their lives in the two World Wars. As well as cemeteries and memorials, the archives and records are of international importance to historians, families, and local communities. This talk will explore the history of the Commission as well as the scope of our work today.

Refreshments will follow the talk, with time to chat and reflect. **Members & non-members are very welcome.**

Our u3a is part of a UK charity dedicated to bringing together individuals with a focus on those not in full-time employment for enjoyable learning or active experiences. We are local, friendly, and affordable, featuring over 25 interest groups covering a variety of activities, from history, literature and geology to walking, cycling, pickleball, table tennis and many more.

## OPEN MEETING



learn, laugh, live



## COMMONWEALTH WAR GRAVES

Presentation by Dan Cornes



Behind the familiar war graves lies a remarkable story, from quiet village churchyards to great memorials.

Discover how the Commonwealth War Graves Commission began, and how it continues to honour 1.7 million lives lost in two world wars.



**Wednesday**  
20 May 2026



**Time**  
2.00 PM



**Minsterley Parish Hall**  
SY5 0EH



**Free entrance**  
**Refreshments available**  
[pontesbury.u3asite.uk](http://pontesbury.u3asite.uk)



## The Visitor Centre has reopened for the season



The Stiperstones National Nature Reserve managed by Natural England presents a unique landscape of rocky tors and heathland that has a rich natural history and geology. Lead and other minerals provided reason for centuries of human occupation in which industry The Bog played an important part. It is a privilege and pleasure to pass on information of these aspects to visitors, and to provide guidance on the range of walks, long and short, that are available for them to enjoy.

Our team of staff are looking forward to welcoming visitors from near and far with information and refreshments. A wide range of local crafts are available to purchase, as are books, maps and walk leaflets.

### Opening hours

Mon - Tues	Closed
Wed - Fri	12 noon – 4pm
Sat - Sunday	11am – 4pm
<b>Closed Bank Holidays</b>	

Craft workshops and group meeting are welcomed to hire the Centre on Mondays, Tuesdays and evenings. Contact details for our secretary, Lin Brown, are shown below.

### Staffing The Bog Visitor Centre

Staff work their first 26 hours voluntarily and additional hours after that are paid at the minimum rate (for those who chose to be paid):

Under 18	£8.00
18 – 20	£10.85
Over 21	£12.71

Our pool of volunteers ranging in age from 16 to 80+ needs expanding and we are looking for people who would enjoy interacting with our visitors. New recruits receive comprehensive training during their induction period. If you are interested please email Lin Brown our secretary: [bogcentre@hotmail.co.uk](mailto:bogcentre@hotmail.co.uk).

Students make a considerable contribution to the successful operation of the Centre at weekends and during the holidays and are paid for all their working hours at the appropriate rate for their age.

**Jerry Hughes**

[www.bogvisitorcentre.com](http://www.bogvisitorcentre.com)  
email: [bogcentre@hotmail.co.uk](mailto:bogcentre@hotmail.co.uk)  
01694 781634

*There was a very gracious lady who was posting an old family Bible to her brother in another part of the country. "Is there anything breakable in here?" asked the man in the post office. "Only the Ten Commandments", answered the lady.*

*Somebody has said there are only two kinds of people in the world. There are those who wake up in the morning and say, "Good morning, Lord", and there are those who wake up in the morning and say, "Good Lord, it's morning."*

**£5 entry**

Join us for a

# Clothes Swap

good quality clothes and accessories

**20th June | 2 - 4.30pm**  
**Snailbeach Village Hall**

• Raffle • Refreshments • Cakes •

Proceeds to Holy Trinity Church, Minsterley

On Saturday 20th June we are holding a Clothes Swap at Snailbeach village hall from 2.00 - 4.30pm. If you've never been before, this is what happens: bring along good quality clean clothes (not jumble) that you no longer want - also scarves, shoes, hats and jewellery.

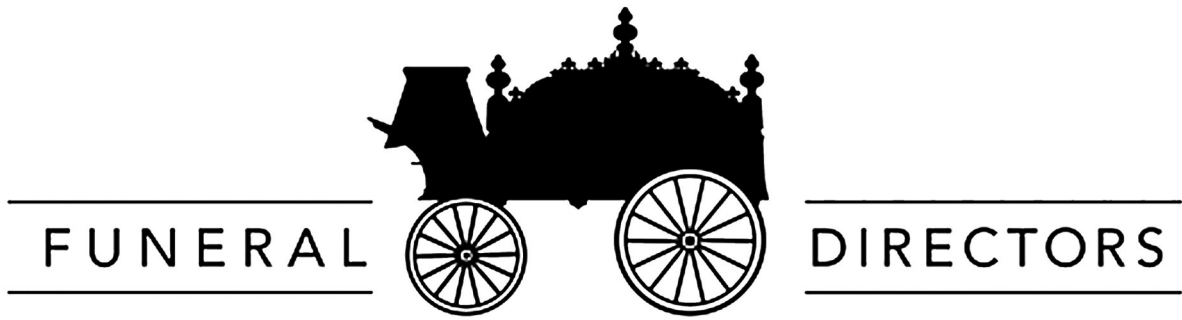
The first half hour is spent putting clothes on rails and accessories on tables. After that its time to check what is on the rails and try on!! Always fun and there will be refreshments available to buy - tea, coffee, cake and prosecco. There will be a raffle too.

The cost is £5 and all proceeds are going to Holy Trinity Church, Minsterley.

If you have any questions please email me.

**Pam Bickley**

[revpambickley@gmail.com](mailto:revpambickley@gmail.com)



# W·R·R Pugh & Son

— established 1890 —

133 Longden Coleham Shrewsbury SY3 7DN | 87 Whitchurch Road Shrewsbury SY1 4EE

01743 344646

info@pughsfuneraldirectors.com

Dedicated professional service throughout Shropshire offering help and guidance in every aspect of arranging a funeral service.

- No obligation written estimates available upon request
  - Private service chapel
- Personalised funeral stationery and orders of service
  - Forget Me Not Florist
- Private parking & disabled access
- Environmentally friendly options
- We can recommend professional stone masons for all your memorial needs.



# Painter & Decorator

*DWS Property Services*

All Interior & Exterior  
work

Fully Insured

Free Competitive estimates

dugloussteele@hotmail.com

07860 528943



# TUESDAY

## 5.30 pm

# MINSTERLEY

## Parish Hall, Callow Room

Wendy 07734218169 xx

real food, real support, real results



Please support our advertisers

## PHIL GRIFFITHS

### Local Plumber

Tap Replacement  
and Plumbing Repairs Undertaken

New Taps Supplied and Fitted

Full Range available

Established 35 years

**Tel: 01743 790046**

**Mobile : 07970 010148**



Prompt and Professional Service

## Advertising in the Minsterley Parish Magazine

Please do support our advertisers where possible - and if you run a local business or would like to advertise something in these pages, contact Colin Edwards on 01743 791508 or at [marieandcol@icloud.com](mailto:marieandcol@icloud.com).

Our annual rates (12 issues) are:

Full page	£120.00
Half page	£60.00
Quarter page	£30.00
Eighth page	£15.00

Short-term adverts can also be accepted at the editor's discretion.

Adverts are accepted in good faith. Please advise us if anything is incorrect or misleading.

# SP GARDEN & PROPERTY SERVICES

- Lawn Cutting • Lawn Treatments
- Maintenance • Hedge & Tree Trimming
- Garden & House Clearance • Painting

Contact Steve **07868 701704**  
[spgardenservices@outlook.com](mailto:spgardenservices@outlook.com)

Please support our advertisers



**STONEMASONS**  
of CHURCH STRETTON

-----  
**MEMORIALS**  
-----

Headstones  
Cremation tablets  
Traditional and modern  
Additional inscriptions

-----  
**HOME**  
-----

Kitchen worktops  
Fireplaces and hearths  
Bathroom and wet room  
Signs and general masonry

**01694 724 448** [www.strettonstonemasons.co.uk](http://www.strettonstonemasons.co.uk)



# WEST MERCIA POLICE

### Police contact numbers

Emergency: **999**  
Non Emergency: **101**  
Crime stoppers: **0800 555 111**  
Website: [www.westmercia.police.uk](http://www.westmercia.police.uk)

Report online: [www.westmercia.police.uk/ro/report/](http://www.westmercia.police.uk/ro/report/)

**BISHOPS CASTLE & RURAL**  
Safer Neighbourhood Team  
(covers all our magazine area except Minsterley)

**SHREWSBURY RURAL WEST**  
Safer Neighbourhood team  
(covers Minsterley)

Twitter: [@SouthShropCops](https://twitter.com/SouthShropCops)  
Email: [bccar.snt@westmercia.pnn.police.uk](mailto:bccar.snt@westmercia.pnn.police.uk)  
Facebook: [Bishops Castle Policing Team Rural Watch](#)

Twitter: [@ShrewsburyCops](https://twitter.com/ShrewsburyCops)  
Email: [shrewsburyrw.snt@westmercia.pnn.police.uk](mailto:shrewsburyrw.snt@westmercia.pnn.police.uk)

## CRIME/INCIDENTS TO NOTE REPORTED CHIRBURY, WORTHEN, HOPE, SHELVE & STIPERSTONE 16<sup>th</sup> March – 15<sup>th</sup> April 2026

CRIME	DETAILS	LOCATION	NOTES
Theft	600 litres of heating oil stolen	Priest Weston	3 <sup>rd</sup> March – 12 <sup>th</sup> March
Allowing dog to be dangerously out of		Worthen	

### House burglaries

During recent months there have been a number of house burglaries in our policing area. Thankfully, house burglaries are rare, however it's always vital to secure your home whenever you leave it. Burglars often target homes that they think will contain valuables (a common target is jewellery), that aren't overlooked, appear unoccupied at the time and have windows or doors left open or with vulnerable features that they can exploit.

Here's what we recommend:

- close and lock all your doors and windows, even if you're only going out for a few minutes
- double-lock any door
- make sure that any valuables are out of sight
- never leave car documents or ID in obvious places such as kitchens or hallways
- in the evening, shut the curtains and leave lights on
- if you're out all day, then it's advisable to use a timer device to turn on lights in the evening
- set your burglar alarm
- make sure any side gates that give access to the rear of the property are locked

If you are going away for a period of time:

- leave lights and a radio on a timer to make the property appears occupied

- ask a neighbour to keep an eye on your property and to take in parcels
- consider asking your neighbour to close curtains and park a car on your drive
- cancel newspaper and milk deliveries.

John Campion  
Police and Crime Commissioner  
West Mercia

## Get involved

Have your say on the Government's plans to merge police forces across England and Wales.

This is your chance to share your views - whether you support the proposals or not.

The PCC will share your views with the Government to form part of their review.

[www.westmercia-pcc.gov.uk](http://www.westmercia-pcc.gov.uk)

The consultation closes on Monday 15 June.

## Welcome to 'The Gables Book Shed'

Minsterley is a lovely place to live with the hills on our doorstep and a great community spirit.

The Book Exchange was a joint idea. Whilst we love to read and encourage our children to do the same, we have always been a part of our community in some way or other.

Where so many children's books and adult books are typically taken to the Charity Shop we decided to do something different and open a Book Exchange where the parish community can take a book and donate a book.

The local area is wonderful for outdoor walks and cycling where on a weekend the Book Exchange can be used as a destination or a stop off point. It's typically open on Saturdays and Sundays, just keep an eye on the Facebook page for other opening times.

You can find your Local Book Exchange on the 'Little Free Library' App/Website and we have created a Facebook Page called 'The Gables Book Shed'.

**Liz and Justin Hambidge**  
The Gables  
The Grove, Minsterley

[Editor's note - if you think the address sounds familiar, it is the former home of Bruce & Barbara]

## Recipe

### Orange & almond cake

#### Ingredients

- 200g unsalted butter at room temperature, plus extra for greasing the cake tin.
- 200g demerara sugar.
- 3 large free-range eggs.
- 1tsp vanilla essence.
- 200g ground almonds.
- 100g fine polenta.
- 2 large oranges (zest of).
- 1tsp orange blossom water.
- 1tsp gluten-free baking powder.

#### The syrup

- 250ml orange juice (from about 3-4 oranges).
- 30ml orange blossom water.
- 5 cardamom pods, crushed.
- 125g golden caster sugar.

#### Method

Preheat the oven to 160C (320f/gas mark 2, 150C fan oven). Grease a 20cm springform cake tin, line the bottom and sides with baking paper and grease again.

Beat the butter and sugar in a large bowl until light and creamy - don't worry if it looks gritty, as the sugar will dissolve when its cooked. Beat in the eggs

one at a time, then stir in the vanilla essence.

In a small bowl, combine the almonds, polenta, orange zest, orange blossom water and baking powder, then stir this into the cake mix.

Pour the mixture into the tin and bake for 40 - 50 minutes until the surface is light brown and the cake is coming away slightly from the sides of the tin.

Remove the tin from the oven, leave to cool for 10 mins, then turn it out onto a plate. This cake will be quite moist and a little fragile at this point so handle carefully as you remove it from the tin.

#### How to make the syrup:

Whilst the cake is baking put all of the ingredients into a saucepan and simmer over a low-medium heat until slightly reduced and slightly thickened, it should take about 10mins. Set aside to cool.

Prick the cake all over with a skewer or kebab stick, then brush or drizzle generously with syrup.

Slice and serve with a dollop of crème fraiche, or gluten free ice cream, or fresh cream.

I always have lots of syrup left over if people would like extra. This cake and the syrup freezes really well. The syrup is so delicious that you can use it with other desserts such as pancakes, rice pudding, ice cream, etc.

My final word of caution is, if you are using a fan assisted oven definitely check the cake at 40mins. ENJOY! (I shall of course expect a small portion of cake from anyone who makes it, purely for research purposes!).

**Fran Smith**

## Local organisations offering help and support

Here are some contact details you might find useful. This page was updated in January 2022, but if you find anything to be out of date, incorrect or not relevant please let the editor know. Likewise please share details of any other group which can offer support to local residents. Thank you.

**Rea Valley Foodbank** 07902 794653  
Food parcels available locally in Minsterley and Pontesbury. Referral needed.

**Rea Valley Transport Scheme** 07468 115939  
Enabling residents to access medical appointments. Please give a minimum of a week's notice.

**Community Good Neighbours, Rea Valley**  
07944 891953

Get in touch with a local Good Neighbour for a friendly chat, small errands and support to stay active and connected within the community.

**Pontesbury Community and Care Co-ordinator**  
01743 790325

Helen Tazewell can give assistance to patients of all ages in need of help, support and advice by signposting to other useful services. She works Monday and Wednesday locally.

**Healthy Shropshire** 0345 678 9025  
Shropshire Council telephone line for information and advice on a healthy lifestyle, including smoking, alcohol, weight, exercise and other matters.

**Shrewsbury Food Hub** [Shrewsburyfoodhub.org.uk](http://Shrewsburyfoodhub.org.uk)  
Surplus food share tables across Shrewsbury. See Facebook page for venue details.

**Shrewsbury "foodbank PLUS"** 07421 745857  
Food parcels, debt advice, returning to work, digital Inclusion, life skills. Referral needed.

**Citizens Advice Shropshire** 0344 499 1100  
Confidential advice and help to solve problems with debt, benefits, housing, legal matters & employment.

Need help claiming Universal Credit? Call their dedicated Help to Claim helpline, 0800 144 8444

**Keep Shropshire Warm** 0800 112 3743  
Advice and grants for people struggling with heating and energy bills.

**Age UK Shropshire Telford & Wrekin**  
01743 233123

Confidential advice for older people, their families and carers.

**Shropshire Council Housing Support**  
0345 678 9005

Support on all housing matters particularly rentals and homelessness.

**Shropshire Mental Health Support** 01743 368647  
Mental health support.

**Shropshire Recovery Partnership** 01743 294700  
Drugs and alcohol support.

**Shropshire Rural Support** 0300 123 2825  
Confidential support during periods of anxiety and stress, and with problems relating to family and business. Website: [shropshireruralsupport.org.uk](http://shropshireruralsupport.org.uk).

**Samaritans** 116 123  
Free 24/7 confidential support whatever you are going through.

**Shropshire Domestic Abuse Helpline**  
0300 303 1191  
Support for anyone suffering domestic violence.

**West Mercia Women's Aid** 0800 783 1359  
24hr helpline for women and children suffering from domestic violence.

**Shropshire Carers' Support Service** 01743 341995  
Wide range of support for unpaid carers.

-----  
**SOME SHORT NUMBERS TO REMEMBER**

101 to contact the police in a non-emergency  
111 NHS non-emergency number  
159 to contact your bank if you suspect fraud.

159 is our first public-facing initiative. Intended for use by consumers, 159 provides an easy route back to safety when you get an unexpected phone call about a financial matter. Easy to remember, the short code number now connects customers of more than 99% of the UK's retail bank current accounts safely and directly with their bank. Unlike many long-form numbers, 159 cannot be spoofed or impersonated.





**Organic produce, eggs, dairy  
& much more  
delivered to your door!**

“Working together to make  
supporting local easy”



GB-ORG-02  
UK/non-UK Agriculture

[www.shropshireorganics.co.uk](http://www.shropshireorganics.co.uk)  
[shropshireorganics@gmail.com](mailto:shropshireorganics@gmail.com)  
07939 199672



**KITCHENS | BEDROOMS | BATHROOMS**

From home survey to design,  
supply and installation...  
***we take care of it all.***

 **01938 570067**

 [info@milneinstallations.co.uk](mailto:info@milneinstallations.co.uk)

Get in touch for **FREE** consultation.

Please support our advertisers



**Shire  
Stairlifts**

**SHROPSHIRE BASED STAIRLIFT COMPANY**

**INSTALLATION  
SERVICE & REPAIR  
FREE NO OBLIGATION QUOTATION  
2yr warranty on new stairlifts**

**Contact us for details**

**07725 337918**

**Crown House, Lancaster Rd  
Shrewsbury, SY1 3LG**

**Email: [info@shirestairlifts.co.uk](mailto:info@shirestairlifts.co.uk)**

**[www.shirestairlifts.co.uk](http://www.shirestairlifts.co.uk)**



# AI UNCOVERED

**What It Is, What It Does & What It Means for You**

**12TH OF MAY**

**6PM DOORS – 6:30PM START**

Discover the truth about Artificial intelligence, with national AI expert Sonia Nash for you:

- ✓ What AI is and how it affects you
- ✓ The AI you already use every day
- ✓ The rise of Agentic AI
- ✓ Addressing concerns: risks & benefits
- ✓ How AI can improve everyday life

**SNAILBEACH VILLAGE HALL**  
**£5 entry – Coffee and tea included**  
 No prior knowledge needed. All welcome!

## DAISY PULLS IT OFF by Denise Deegan

Abbey Foregate Church Drama Group will perform “Daisy Pulls It Off” on Wed 27th to Sat 30th May at 7.30pm in St. Nicholas’ Hall.

Daisy Meredith, the new girl, is the first scholarship student to attend the Grangewood School for Girls. Some of the privileged students are determined to make Daisy look bad in the eyes of the administration. However, Grangewood has its own problems, financial ones. After a series of ripping adventures, Daisy wins over her chums, and saves the school when she cracks a secret code, finds the missing treasure and saves the life of her chief persecutor all on the same night!

The play will be performed in the genre of Physical Theatre where the narrative, set, props and staging are communicated through heightened movement, gesture, and (of course) hockey sticks! This Olivier Award-winning yarn about life in a 1920s Boarding School promises to be jolly good fun for all the family.

Tickets cost £12 (£6 for under 18s) and can be obtained through the Drama Group website on [info@abbeydrama.com](mailto:info@abbeydrama.com) or by telephoning Robert Currie (01743 790123).

**Nick Jones and Robert Currie**

## Questions you might ask

**Question** – If I get a call from my bank, I am now suspicious as you hear so much about fraud. What is the advice if ‘my bank’ says it is calling me?

**Answer** – You are right to be suspicious as nearly 75 percent of attempted frauds are conducted via telephone, with 60% through voice calls and 11% via text messages.

### The Safety Advice is:

If you receive a suspicious call about your bank account or finances, hang up immediately and dial 159. This free service, now available to 27 UK banks and building societies, covering over 99% of UK current accounts, connects you directly to your bank’s fraud team, helping protect you from scams.

Fraudsters often create a sense of urgency, pressuring you to move money or share personal details quickly. Remember - your bank will never ask you to transfer money to a ‘safe account’ or pressure you into making immediate decisions.

If in doubt, always hang up and call 159 to verify whether the call was genuine. Since its launch in 2021, over one million calls have been made to 159 so taking a moment to check could save you from significant financial loss.

**Question** – I find it difficult to get an appointment at my GP surgery, sometimes having to wait two weeks or more? Is there anything I can do?

**Answer** – Yes, you may be able to if you have a community pharmacy.

**Pharmacy First** is an NHS England initiative launched in 2024. With **Pharmacy First**, you can walk into your local community pharmacy and ask for a private consultation with a pharmacist. They can assess symptoms, give advice, and in some cases provide NHS treatment — all without needing to see a GP first.

This is especially helpful for:

- Older adults needing quick advice
- Families with children who are unwell

Carers supporting relatives

There are over 10,000 participating pharmacies in England, meaning most local pharmacies can offer this service. Just go in and ask: “Can I have a **Pharmacy First** consultation, please?”

**Angela Gifford**

[www.ablecommunitycare.com](http://www.ablecommunitycare.com)



## ***Hair by Jen***

***3 Station Road, Minsterley***



*Jenny and Stacey offer a friendly service including foils, tints, perms, cut and blow dries, etc.*

*Open: Tuesday 9am-3pm*

*Wednesday 9am-6pm*

*Thursday 9am-9pm (late night!)*

*Friday 9am-4pm*

*Appointments advisable: call 01743 792548 or drop in.*

Please support our advertisers

## **Leaton Forest Firewood**

Locally Grown, Traditionally  
Seasoned Firewood

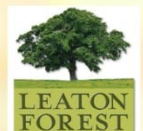
Barrow Bags  
Premium grade, £50  
B grade, £45

Bulk Bags  
Premium grade, £150.00  
B grade, £125.00

Kindling £8.00

Free Local Delivery

To order;  
Email; [trees@leatonforest.co.uk](mailto:trees@leatonforest.co.uk)  
or  
order through our website;  
[www.leatonforest.co.uk/  
firewood-log-sales/](http://www.leatonforest.co.uk/firewood-log-sales/)





# WEEKLY EVENTS



## MONDAY

### YOUTH CAFE (term time)

3.30 - 5pm

Years 7 - 10 | activities | snacks | free Wi-Fi | music  
Contact Joe on 07387 578230 for more information

### BIBLE STUDY

7 - 8pm

Group meets every two weeks. For information contact Greg Smith 07902 794653



## TUESDAY

### REA VALLEY FOODBANK

10am - 12pm

For information contact Greg Smith 07902 794653 or go to [www.reavalleyfoodbank.co.uk](http://www.reavalleyfoodbank.co.uk)

### ICTHUS BIBLE STUDY GROUP

2.30 - 4.30pm

2nd and 4th Tuesday of each month. For information contact [PApontstip@outlook.com](mailto:PApontstip@outlook.com)



## WEDNESDAY

### COFFEE HUB

10am - 12pm

A drop-in community cafe where everyone is welcome. FREE tea and coffee | cake and biscuits | chat and companionship



## THURSDAY

### TRINITY TOTS (term time)

10am - 11.30pm

A pre-school drop-in group for under 5s with their parents or carers. Activities | crafts | toys | stories | songs | snacks

ALL OUR WEEKLY GROUPS ARE FREE AND OPEN TO EVERYONE

For more details about these events please visit [www.stiperstoneschurch.org.uk](http://www.stiperstoneschurch.org.uk) or follow us on **Facebook** (scan the QR code)







## Hope and Shelve Parish

**Summer Fete**  
**Saturday June 6<sup>th</sup>**  
**2-4pm at Leigh Manor,**  
**Minsterley SY5 0EG.**

**FREE ENTRY!**

raffle

refreshments

sideshow

stalls

music from the  
**Stiperstones Brass Band**

## Stiperstones group of churches

- recent 'life event' services

11<sup>th</sup> April

**Burial of Ashes at Hope Cemetery:**  
Beryl Bullen

12<sup>th</sup> April

**Baptism at All Saints Shelve:**  
Eleanor Alice Roberts

## Snailbeach & District Village Hall Newsletter

If you are interested in events and news from up the hill, the Newsletter is now available online - together with the previous year's issues. In the absence of a village website it is available on the church website: [www.stiperstoneschurches.org.uk](http://www.stiperstoneschurches.org.uk).

Choose "St. Luke's Snailbeach" and find the "News and Notices" button on the left hand side, and finally press "Notice Sheets."

There's lots going on!

## Minsterley Methodist Church

**10am Sunday services**



- 3<sup>rd</sup> May    CAFÉ CHURCH led by  
Rev Brian Spencer
- 10<sup>th</sup> May    Service led by Rev Kim Stilwell and  
will include Holy Communion
- 17<sup>th</sup> May.    MINSTERLEY PRAISE at Holy Trinity –  
starts at 10.30am
- 24<sup>th</sup> May.    PENTECOST Sunday. Service led by  
Rev Richard Hall
- 31<sup>st</sup> May.    Service led by members of the  
congregation.

A warm welcome is extended to everyone who would like to come and join us at any of our services and for refreshments afterwards.

**Sandra Lewis**

## Snailbeach Methodist Chapel

**2.45pm Sunday services**

- 3<sup>rd</sup> May                      Rev. Richard Hall  
17<sup>th</sup> May                     Domini Lucas

We meet in the schoolroom adjacent to the chapel. All are welcome to come.

### Advance notice

The final service at Stiperstones Methodist Church will be held on 28th June at 3.00pm. This will hopefully be outside: please bring a chair!

### Thank you

Following our recent Gift Day at Minsterley, over £1,000 was raised for the furtherance of outreach in the Rea Valley church group. Thank you to all who supported us.

**Sue Priddey (01743 790913)**

# Our partner churches in the Stiperstones Group —

## St Luke's Festival Church Snailbeach



St Luke's is a "Festival Church." Services are usually held on five festival days: Mothering Sunday, Easter, Harvest Festival, Remembrance Sunday and Christmas day. A few other services are planned too. See Stiperstones churches website.

### Next services:

3rd May	3.00pm	Afternoon service
24th	3.00pm	<b>Deanery Pentecost service</b> at Worthen
31st	10.30am	Group Service at Minsterley led by the Bishop of Hereford
12th July	3.00pm	Afternoon service with Ian Williams

## St Mary's Parish Church Habberley

**Church Wardens** Pauline Stopford, The Kennels, Habberley (01743 790784)  
 Pearl Hannigan, 9 Yarlington Orchard, Pontesbury (01743 790495)

Sunday 10th	5.00pm	Deanery Choral Evensong
Sunday 24th	3.00pm	<b>Deanery Pentecost service</b> at Worthen Village Hall
Sunday 31st	10.30am	Group Service at Minsterley led by the Bishop of Hereford



## Hope & Shelve Parish

(services at Holy Trinity Church Hope and All Saints' Church Shelve)

**Church Warden** Barbara Venables

Refreshments are served at all our services



### Services this month

Sunday 3rd	9.00am	Shelve	Holy Communion
Sunday 10th	9.00am	Hope	Holy Communion
Sunday 17th	9.00am	Shelve	Worship Together
Sunday 24th	3.00pm		<b>Deanery Pentecost service</b> at Worthen Village Hall
Sunday 31st	10.30am	Minsterley	<b>Group Service</b> of Holy Communion led by Bishop of Hereford

EST  1936

# Frank Painter & Sons

F U N E R A L D I R E C T O R S

Spring Gardens, Shrewsbury, SY1 2TF  
01743 362024 (24-Hours)

- Family-run and well respected
- Pre-paid funeral plans
- Home visits
- Private Chapel of Rest
- On-site Service Chapel
- Unattended cremation services
- Local Knowledge
- Male or Female Funeral Directors



4th Generation family-run Funeral Directors, covering all areas of Shropshire and beyond, for over 85 years.

[www.frankpainterandsons.co.uk](http://www.frankpainterandsons.co.uk)