



# Sinfin Moor Church

Arleston Lane, Sinfin Moor, Derby DE24 3DH

A Local Ecumenical Partnership (LEP) serving

Sinfin Moor and Stenson Fields

## February Newsletter

(Published Sunday 1<sup>st</sup> February 2026)

### Welcome to our Monthly Newsletter

A reminder that at any of our Church Services, please be considerate to others and ensure your phone is set to silent or switched off. Thank you for your consideration.



The Church is fitted with an inductive loop system.

Hearing aid users should switch to the 'T' position (if so fitted) or adjust your hearing aid as required.

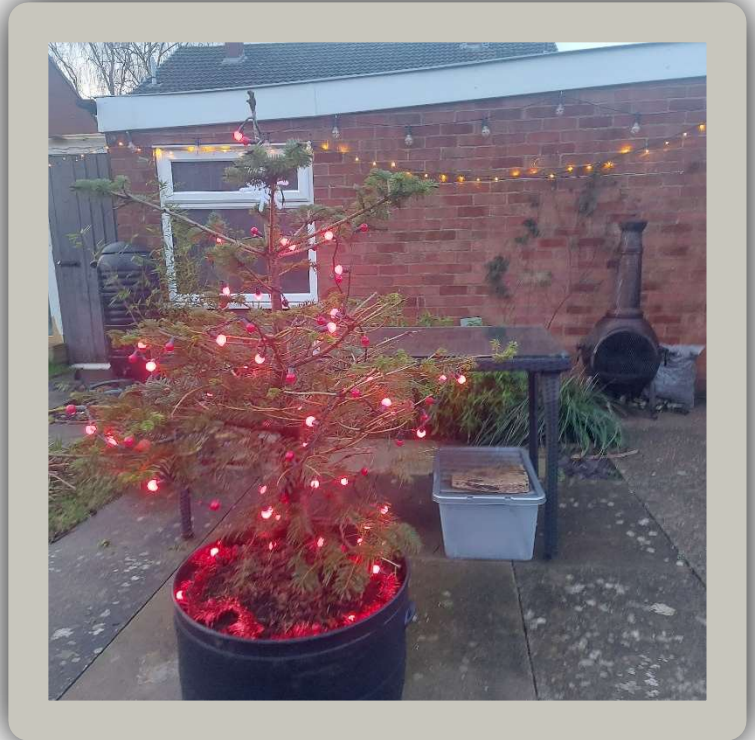
With it being the first service of the month, Communion will be served at the rail, please come forward when asked to do so by the Usher. If you cannot easily come to the rail, please tell the Usher and we will happily serve you Communion to you at your seat. Should you require a blessing, please come to the rail when asked to do so, and tell the person who is presiding or tell the Usher if you cannot get to the rail.

## Paul's Piece

Are all your Christmas decorations back in their boxes and packed away? When did you pack them away? On Boxing Day? On the twelfth day of Christmas - January 5<sup>th</sup>? A bit earlier or a bit later? Do you have a particular day and time or just when you feel like it?

This year although all the internal decorations are packed away, we usually get it done by our sons birthday on January 6<sup>th</sup>, somehow we have managed to leave our outside Christmas tree and lights still up, and still on the timer to come on every night. It feels a bit strange now we're past the Christmas season.

I have all sorts of thoughts why I haven't got around to what will be a 30 minute task. I've been busy, its been too cold, I haven't felt up to it, they look nice in the evening and I just haven't had the motivation. But I am constantly reminded that we are not in the Christmas season.



This month we will be starting Lent, a very different season. A time when Christians around the world remember the events leading up to and including the death of Jesus Christ, whose life and teachings are the foundation of Christianity. It is a time of reflection and of recognising the things that hold us back from entering into more of the life and love of God. An opportunity for Christians to recognise the continuing gift of God's presence - Emmanuel: God is with us. The gift of new life that has re-directed us to an ever-growing knowledge and love of God.

My decorations in the garden are going to come down, we are in a new season. I can see alongside them that there are signs of a new season in my garden. Daffodils, snow drops, grape hyacinths, the colours of spring and new life. The season of Lent is a reminder to "fast from indifference" and give attention to the differences God has made, and continues to open up to us. A season to move on from the things that hold us back, to put them away, and to embrace his forever renewing work, in and through our lives. A new season to embrace what is set before us and not hold on to what is past, to recognise the differences God is making for us and for others.

# Sinfin Moor Church

We are a Christian Fellowship  
committed to serving God  
and sharing the good news of Jesus with everyone

## Church Community Prayer Meetings

"Any concern too small to be turned into a prayer  
is too small to be made into a burden."  
— Corrie Ten Boom



Each week we meet to pray together for our church and local community for around 30 minutes at the Church Centre on Thursdays 9am. All are welcome to join and you are not required to pray aloud.

We follow the Celtic Daily Morning Prayer that has some written prayer that we say together, some short bible readings, then we hear a reflection, meditation and move into a time of 'open prayer' for current needs and concerns, and life in the surrounding area, including praying for the church and its activities. You are welcome to join.

Other opportunities to share together in prayer are through the

Prayer List in this newsletter - Contact Glen [roeglennard@gmail.com](mailto:roeglennard@gmail.com) with any requests

at Heath Court on Thursdays 10:00am in the Quiet Room

and with the CoDA (School) prayer group - the next meeting is **February 9th 2.30pm** in the Church Centre Welcome Area. contact Fiona [fiona@sinfinmoorchurch.org.uk](mailto:fiona@sinfinmoorchurch.org.uk)

## Hazel Carvell Funeral



Hazel's funeral will be held at Sinfin Moor Church on Tuesday 4<sup>th</sup> February at 10.15am. This will be followed by a private family service at Markeaton Crematorium.

People are welcome to remain at the Church Centre and join the family upon their return for light refreshments to celebrate Hazel's life and share fond memories.

Please pray for her daughters Julie and Mandy along with the wider family at this time of loss and grief, that they may know the comfort and peace of God.

## Connecting with the City of Derby Academy

As immediate neighbours of the Church Centre a number of us regularly intentionally pray for the school, the staff, pupils and all who work there and this will continue.



We have now also been approached by **Derby City Council** to connect with young people in this area and have a safe after school space. As a pilot we are joining with **Sporting Communities**, who already have staff working in the school, and for a time limited pilot provide a safe space for an hour a week in the Church Centre after Easter. This will be initially led by the SC staff.

***We would like to invite you, or anyone you may know who is interested in being involved, to contact either Paul or Gael.*** At this stage we are looking for people to continue praying by joining the CoDA prayer meetings and to serve refreshments during the pilot. There may be other roles that emerge as the project progresses and other ideas that we as a Church Community can offer. Please pray for continuing wisdom and discernment as this opportunity to connect and serve the young people in our local community develops.



Rev Fionas Update



"Taste and see that the Lord is good"

Down on Boundary Moor Gardens, those that gather every month for Food & Faith have been exploring the Holy Habit of "Eating Together" alongside Sinfin Moor Church and Heath Court.

We started back in October to try out the small group material. On Wednesday night this week, we gathered together, a table of 20 from age one upwards with a bring and share supper of food from across the world!

Over the months as we reflected together, we've seen some common threads interweaving our conversations. One's that I know will be familiar within the other small groups and in our conversations on Sundays. Amongst others - that we may have eyes to see the angle within others; the challenge of caring for strangers - who is welcome at our own tables? An overall thought has been the need for kindness towards those we meet.

Our prayer on Boundary Moor Garden - as we deepen our relationships with each other, as we share food and lives - is that God will draw others together to learn and know more of God's story and God's love through us.

To encourage these connections - and to spark curiosity! - with February being the month we celebrate St. Valentine, I have been making little coloured hearts. At this moment I'm up to 85. My plan is to attach a little tag to each with the words:

"With Love"

and leave them around the estate on February 13th...I'll let you know how it goes!



With love

Fiona





## Update from Revd. Gael

All the believers devoted themselves to the apostles' teaching, and to fellowship, and to sharing in meals (including the Lord's Supper), and to prayer.

A deep sense of awe came over them all, and the apostles performed many miraculous signs and wonders. And all the believers met together in one place and shared everything they had. They sold their property and possessions and shared the money with those in need. They worshipped together at the Temple each day, met in homes for the Lord's Supper, **and shared their meals** with great joy and generosity - all the while praising God and enjoying the goodwill of all the people. And each day the Lord added to their fellowship those who were being saved.

*Acts 2:42-47*

Well, friends, we've finished our first month of journeying with the Holy Habits material, beginning with the habit of 'Eating Together'. All the habits we'll explore over the course of these two years stem from the vision of the early church community in Acts 2, as above.

It was an intentional choice to begin with this habit because it's a practice we can easily pick up and integrate into our times together, which is exactly what our new home groups have discovered...

### Home Groups

Home groups, small groups, life groups, whatever language you find yourself using, we have been so encouraged as a leadership team to see them really 'take off'! We now have four groups that meet, three of them weekly and one bi-weekly, over evenings and lunch times, and on our last count, about half of Sunday attenders are now in one, which is an amazing start!

We've been following the material that complements the habit and often builds on what has been spoken about on Sunday. We also eat together every time, which has been SO important in creating an environment of friendship. Some menu items have included jacket potatoes, buffet food, stew, cakes, puddings, cheese and crackers, etc. (if that's not reason enough to go, I don't know what is!). Each group has found itself getting to know each other better and having fantastic conversations and times of prayer, and the whole premise of eating in each other's homes helps us to foster and remember that we are indeed a 'family' as the church.

If you'd like to join a group, it's never too late, and we'd love to welcome you! The more the merrier. There is no pressure to speak or contribute - you can come and share a meal and enjoy the company. We would be so very glad to have you.

*Please speak to Gael for more information about joining a home group.*

### **Reflection Booklets**

The final thing in this update is that, for those who cannot get to a home group or who would like something to reflect on daily, there are optional reflection booklets that can be ordered for personal use during the week. These booklets have 40 Bible readings with a short reflection and a thoughtful question or prayer. They are intended to be read Monday-Friday over the 8 weeks, and they often link in with the passages we may be looking at in home-groups or church, helping you feel connected and bolstering your learning as we journey together.

Some people have already ordered and received theirs for this habit (I gave a notice one Sunday and took orders). If this is something you would like ready for the next habit (Fellowship), which will begin on the 1<sup>st</sup> of March, please do let me know and I'll make sure they are ready for you.

---

In Psalm 145:16, it says of God,

**"When you open your hand, you satisfy the hunger of every living thing."**

I pray that as we continue to walk together and become better disciples of Jesus, we would know the satisfying love of God and see and celebrate his provision in our lives as individuals and as a community. Amen!



## MONTHLY PRAYER LIST

## FOR FEBRUARY

Hi Everyone,

Answer to prayers

Chris Burrow's operation was successful, and he is on the road to recovery.

Paul has had some positive connection with CODA.

The Holy Habits groups are going really well and are well attended.

The involvement of the children in our service.

Thank You Father

Let us be thankful for each of the church services, thanking all who lead and prepared for the success of each one.

Pray for each of our church leaders that God will guide and protect them in all they do. Pray for their families too as all the outreach they do affects each member of their family. Pray for patience and grace for their families as they release them to do the work the Lord ordained for them to do.

Pray for continued growth of relationship with Redwood School and other schools in the area. For each of the Churches within Sinfin that we can build on relationships and connections with each other.

Pray for World leaders and ask for wisdom, perseverance to work towards Peace, Grace and Wisdom in all they do. Help each one to stand up for what is needed to bring an end to wars and the exploitation of those unable to defend themselves.

Pray for all who are displaced and affected by war and tyranny to get the help they need. Especially our brothers and sisters around the world who are being persecuted, tortured and killed for their belief in you, give our government and those at work with the asylum seekers and refugees the wisdom to acknowledge those who are genuinely in fear of their lives and need help. Let them provide for what they need, with care and compassion.

Pray for all those within our church family that are struggling with ill health at this time,

Pat MacDonald to have peace and for the right treatment to help her to be calm

Eileen Baker

John Keith who is quite poorly

All those who are struggling with ill health, physical and emotional.

For all who are struggling financially give them the help they need and the peace to know You are our provider.

Pray for members of our church who are no longer able to attend our services. Pray that they will know they are still in our thoughts and prayers.

For all the young people that they will seek you as they struggle with many areas of their life.

Pray that God will put the right people around them.

Pray for the upcoming season of Lent. Help each one of us be open to hearing your still small voice during this special time .

Prayer is our most powerful tool when we pray in true faith even faith as big as a mustard seed how do I know? It's because the Bible tells us so.

Thank you for your commitment to pray and lets make a difference in 2026



Please remember to get in touch for any prayer requests

My contact for any prayer requests is, Glenn Roe Mobile 07949654286 email, [roeglennard@gmail.com](mailto:roeglennard@gmail.com)



## **Treasurer's Report - February Newsletter**

The year 2025 Accounts are with our Inspector of Accounts, there is just one query which I have answered, hopefully they will be signed off as a correct record and back with me in the next few days. Good news! - for me at least. That's one thing ready for the Annual General Meeting in April.

Our financial situation has not really improved as we enter February, though it has not got much worse. I like to think we are nearly over the worst of our expensive months which tend to be December to February. So 'Almost There' as Andy Williams sang. Who is Andy Williams, I hear you say.

We are still awaiting the grant from the Methodist Circuit towards our Solar Panels although this has now been progressed to the point where it is in the hands of the people that hold the money in Manchester. No doubt they will pay it once it has been processed in accordance with their procedures. The Circuit Superintendent and the Circuit Treasurer have done their bit. The delay has been caused by the serious illness to the Circuit Treasurer, the appointment of a replacement and the procedures and paperwork that need to be completed in order to facilitate this.

Another effect on our finances has been the ongoing delay to receiving the 2025 Gift Aid and the 2024/2025 GASDS payment from HMRC. The application was submitted on the 2<sup>nd</sup> January 2026; it normally takes them 10 to 14 days to make the payment, but not this year. Patience is virtue they say, so since we are virtuous people, patience it is.

We have lost one of our regular givers and also gained one, so hopefully, it will be status quo and things will not change on that front.

We have had to transfer most of the 'spare' money we hold in our Deposit Account to the Current Account in order to see the month of January out. This was done to eliminate any risk of going into the 'red' mostly caused by HMRC not sending us the Gift Aid and GASDS when expected. I think this is their normal practice and we 'assumed' they would be as quick as in previous years.

Other than that, we are on an even keel having paid all invoices in a more or less timely manner.

The things on the horizon to help us along is the better weather thus reducing our costs, the payment of the outstanding claim from HMRC and the energy the solar panels are producing, this is already reducing our electricity bills and will give us an extra income as we start to export energy to the National Grid.

Finally, some say that the Church never issue thanks, I am one Treasurer that does try to, so here is one of my occasional 'thank you' messages. It is to those of you who give money to the Church, through the offering on a Sunday, directly through the bank account, whether it be regularly or on an ad-hoc basis, thank you. It is all gratefully received and used to keep our Church functioning. Without it we may possibly not have a Church to come to worship our Lord. It is right and proper for me to thank those of you who do not give money as well, giving your time and skills so generously.

Should you have any concerns or questions about our finances (like the 'spare' money I referred to above), please do feel free to approach me to chat about, it's a free service I can provide, and I promise not to try and wring more money out of you.

With very best wishes to you all.

**Ian Sant - Treasurer**

Our Lent Collection 2026

HOLYHABITS

For the season of Lent  
we are encouraging donations to  
**Storehouse, the Food Bank.**

Donations of non-perishable items, tins of meat and vegetables,  
toiletries, coffee, tea, dried pasta, UHT milk etc. can be left in the  
collection bin in the Front Bay from  
**Sunday 22<sup>nd</sup> until Sunday April 5<sup>th</sup>.**  
Many thanks for your generosity

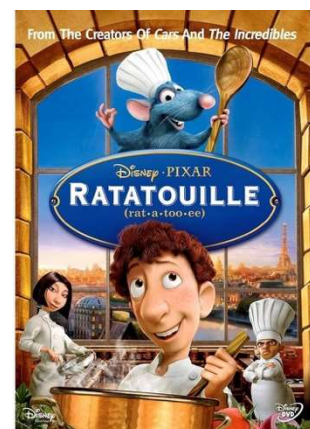



## Movie Afternoon

Another integral part of our program of Holy Habits events is a Movie Afternoon every eight weeks, which will signify and celebrate the last Sunday of each topic we look at. The first one, to mark the end of 'Eating Together', will be

***Sunday 22<sup>nd</sup> February, 3pm***

The Holy Habits resource suggests several films, books, and other resources, and for this theme, we have selected the Disney film, 'Ratatouille'. There will be popcorn and refreshments, along with a few questions to accompany the movie on the tables, to help you reflect on all we've learned at church, considering the story.



It will be a great event to share, for all ages together, and a wonderful opportunity for you to invite family and friends to church!

# licensing

**February  
28th  
at 3pm**



**Saturday 28<sup>th</sup> February  
at 3pm**  
5 Glentress Drive,  
DE24 3GT

You are invited to  
the licensing of  
**Revd Fiona Barber**  
as  
**Associate Minister of the  
benefice of  
Sinfin Moor,  
Diocese of Derby.**  
by  
**The Bishop of Derby,**  
the Rt Revd Libby Lane  
assisted by  
**The Archdeacon of Derby  
City And South Derbyshire,**  
The Venerable Matthew Trick



**Please RSVP to Fiona on**  
[fiona@sinfinmoorchurch.org.uk](mailto:fiona@sinfinmoorchurch.org.uk)  
or 07966 520390  
**by Monday 23<sup>rd</sup> February**

Please note this event will be in a Gazebo!



# THE DERBY CIRCUIT OF THE METHODIST CHURCH

Registered Charity no. 1142341

**Local Lay Pastor (part-time, 20 hours/week)**

Salary £15,990 per annum (full-time equivalent £31,980)

The Derby Methodist Circuit is seeking to appoint a part-time Local Lay Pastor to support mission, ministry and pastoral care at St John's with Duffield Methodist Church in Allestree, as well as supporting a monthly gathering of Methodists in Duffield.

This role offers an exciting opportunity to build on the faithful ministry of the current Lay Pastor who will retire in February 2026. The Lay Pastor will be hands-on in supporting volunteers who run Church groups and activities and will also help to develop new mission initiatives to help the church connect with the local community through outreach, hospitality, and relationship building.

We are looking for an enthusiastic, self-motivated person who can work collaboratively with existing volunteers and the Minister who has pastoral charge and oversight. If you have proven leadership skills, and an ability to support, encourage and inspire, we would love to hear from you.

You will need to be able to work flexibly to meet the needs of the role. Some evening and weekend work will be required.

There is a genuine Occupational Requirement for the post holder to be a Christian.

Closing date for applications: Wednesday 11<sup>th</sup> February 2026

Interviews: Saturday 28<sup>th</sup> February 2026

For an information pack (including job description and person specification), please contact Fiona, **Circuit Administrator**:

**Email:** [office@derbymethodists.org.uk](mailto:office@derbymethodists.org.uk) **Telephone:** 07842 719677

For an informal conversation about the role contact **Rev Tracey Harris**, Superintendent Minister.

**Telephone** 01332 233320 before 21st January.

To find out more about Derby Methodist Circuit and St John's with Duffield Methodist Church, please visit <https://derbymethodists.org.uk/> and

<https://stjohnsallestree.org.uk/>

## Some Save the dates

### Heath Court Services

You are invited to a time of worship at Heath Court at **2.00 pm** (note the start time is now 2.00 pm) on the first Friday of every month.

You can be certain of a warm welcome, and there are always some lovely refreshments afterwards.



### Biscuits Needed

We are in need of biscuits for after the Morning Service, it seems that they keep being eaten! If you are able, we need packets of biscuits, please give them to those serving refreshments on any Sunday Morning. Thank you to those who do bring biscuits occasionally, they are very gratefully consumed!



### Duty Rotas

Can I please just ask again if anyone can help cover the coffee rota, if you would like more information just ask. We have lost 2 people and this is going to make it harder to cover on a Sunday morning, it may come to us setting up but you may have to help yourselves.

Also, if anyone is interested in helping on any of the rotas below, please ask for more information of what you have to do. Welcome rota, greeting people, Intersession Prayers, Bible Readers and help with setting out the chairs for Sunday services please let me know.

Thank you

**Julie Froggatt**

## ***Smile Time (or grimace)***

### Biblical Humour

Q. What kind of man was Boaz before he Married Ruth?

A. Ruthless

Q. What do they call pastors in Germany?

A. German Shepherds

Q. Why didn't they put playing cards on The Ark?

A. Because Noah was standing on the deck

## **Rev Dr Khawsiamia of Myanmar (Burma)**

We first met Khawsiamia and his wife Romani with their youngest child when he was studying in Selly Oak, Birmingham. After that ended we kept in touch and met him again when he was studying for his doctorate in Hong Kong while we were returning from a holiday in New Zealand. Then again, seven years later we met again when he visited the UK. Over the years we have seen the difficulties that he and his family have had to deal with due to the economic and political conditions existing in Myanmar. Recently conditions have become so difficult that he took an opportunity to take his family and take refuge across the Indian border in Mizoram but having to leave his aging mother behind.

What follows is his story in his own words.

### **Eirlys Smith**

I come from a mixed tribal and religious family. My father is a Mizo Christian from Chin State, Myanmar, and my mother is a Burmese Buddhist from the central plains of Myanmar. We are four children, and I am the eldest. My father became a Christian when he was a teenager after hearing the Good News from the Mizoram Presbyterian Church.

After my father retired from the Burma Army, we lived in my mother's village. I often went with my mother to the Buddhist monastery, and I became a Buddhist. My father was the only Christian in the village. He used to tell me and my younger brothers and sister about his faith.

Later, we moved to Tahan, a Mizo Christian town in north-western Myanmar, because of my father's new business. From then on, we lived among Mizo Christians. When I was in 6th standard, my father told our family that we must decide whether to follow Jesus or Buddha. I quickly answered, "As for me, I want to follow Jesus." My mother also said, "It is not hard for me to follow Jesus. I want to know more about Him and His way of salvation."

So, my father invited a Methodist woman evangelist to share the Good News with us. About three months later, my mother, my brothers, my sister, and I were all baptized together by a Methodist minister. From that time, we happily became a Christian family.

I became a preacher of the Methodist Church in Tahan, Myanmar, when I was 19 years old. Later, the Synod selected me to attend ministerial training in Mandalay for three years. After successfully completing the training, I began my ministry in 1988 as a pastor of the Methodist Church in Tahan District, Myanmar, and I was ordained by the Methodist Conference in Mandalay in 1990.

I had the opportunity to study for a Bachelor of Theology (B.Th.) at Aizawl Theological College from 1992 to 1995. Since my mother is Burmese, I chose ATC in order to improve my Mizo language. I pursued a Postgraduate Diploma in Pastoral Studies at the University of Birmingham, England; Master of Theology (M.Th.) in Pastoral Theology, Care, and Counselling at the South Asia Institute of Advanced Christian Studies, Bangalore. I had joined Myanmar Theological College in Mandalay as a lecturer. Later, I pursued a Doctor of Theology (Th.D.) in Systematic Theology at Chung Chi College, The Chinese University of Hong Kong. My revised dissertation, *Ludu Theology*, was published by Peter Lang Academic Publications, Switzerland, in 2013.

I served as Principal of Myanmar Theological College for four years. In 2020, I also had the opportunity to teach as an Adjunct Professor at Union Theological Seminary in New York City, USA. Following this, the church appointed me as Principal of Tahan Institute of Theology, where I served until my retirement in April 2025.

In January 2024, one of my classmates informed me that the Mizoram Presbyterian Synod Mission Board was seeking a retired pastor fluent in Burmese to serve as Pastor-in-Charge among Burmese migrant workers in Aizawl. He advised me to apply if I was available. After much prayer with my family, I decided to apply. The Mission Board appointed me as Pastor-in-Charge for the Burmese community in Aizawl, and I began my service on May 4, 2025. As a result, the Methodist Church stopped my pension because I had become a Presbyterian pastor.

I am married to Romani, and we are blessed with three sons. We now live together in Mizoram.

I thank God for giving me this wonderful opportunity to continue serving as Pastor-in-Charge among the Burmese people in Aizawl, using my mother tongue, under the Synod Mission Board of the Mizoram Presbyterian Church.

**Rev Dr Khawsiamia**



## CHURCH MINISTER AND CONTACT DETAILS

|                           |                       |                               |  |
|---------------------------|-----------------------|-------------------------------|--|
| <b>Enabling Minister*</b> | Rev'd Paul Desborough | 756336                        | <a href="mailto:paul@sinfinmoorchurch.org.uk">paul@sinfinmoorchurch.org.uk</a>               |
|                           |                       | 07958 618507                  |  |
| <b>Assistant Curate*</b>  | Rev'd Fiona Barber    | 07966 520390                  | <a href="mailto:fiona@sinfinmoorchurch.org.uk">fiona@sinfinmoorchurch.org.uk</a>             |
| <b>Assistant Curate*</b>  | Rev'd Gael Browne     | 07405 922557                  | <a href="mailto:gael@sinfinmoorchurch.org.uk">gael@sinfinmoorchurch.org.uk</a>               |
| <b>Lay Minister*</b>      | Jean Desborough       | 07415 671004                  | <a href="mailto:reader-jean@sinfinmoorchurch.org.uk">reader-jean@sinfinmoorchurch.org.uk</a> |
| <b>Secretary*</b>         | Julie Froggatt        | 722222                        |  |
| <b>Stewards*</b>          | Lauren Foster         | Julie Froggatt                |  |
|                           | Melvin Worton         | Ian Sant ( <b>Treasurer</b> ) | <a href="mailto:finance@sinfinmoorchurch.org.uk">finance@sinfinmoorchurch.org.uk</a>         |
|                           | Melanie Sant          | Joshua Osah                   |  |
| <b>Church Council</b>     | Pam Burrows           | Christopher Froggatt          |  |
|                           | Joy Hughes            | Margaret Platt                |  |
|                           | Glenn Roe             | Wendy Roe                     |  |

*\*Are also members of the Church Council*

|                                    |                       |              |  |
|------------------------------------|-----------------------|--------------|--|
| <b>Parish Safeguarding Officer</b> |                       |              | <a href="mailto:safeguarding@sinfinmoorchurch.org.uk">safeguarding@sinfinmoorchurch.org.uk</a> |
| <b>Room Bookings</b>               | Melanie Sant          | 721927       | <a href="mailto:bookings@sinfinmoorchurch.org.uk">bookings@sinfinmoorchurch.org.uk</a>         |
| <b>Webmaster</b>                   | Rev'd Paul Desborough |              |  |
| <b>Connect Group</b>               | Wendy Roe             | 762664       |  |
|                                    | Jean Desborough       | 756336       |  |
| <b>Prayer Diary</b>                | Glenn Roe             | 07949 654286 | <a href="mailto:roeglennard@gmail.com">roeglennard@gmail.com</a>                               |
| <b>Property Steward</b>            | Melvin Worton         | 07745 294449 | <i>First contact for building matters</i>  |
| <b>Newsletter Editor</b>           | Joy Hughes            | 07428 132799 | <a href="mailto:jehughes5@hotmail.com">jehughes5@hotmail.com</a>                               |

### Diary Dates - February

|                         |          |   |
|-------------------------|----------|---|
| Sunday 1 <sup>st</sup>  | 10.00 am | Sunday Morning Communion.                   |
| Monday 2 <sup>nd</sup>  | 10.00 am | Connect Group/Community Meal (all welcome). |
| Sunday 8 <sup>th</sup>  | 10.00 am | Sunday Morning Worship                      |
| Monday 9 <sup>th</sup>  | 10.00 am | Connect Group/Community Meal (all welcome). |
| Sunday 15 <sup>th</sup> | 10.00am  | Sunday Morning Communion                    |
| Monday 16 <sup>th</sup> | 10.00 am | Connect Group/Community Meal (all welcome). |
| Sunday 22 <sup>nd</sup> | 10.00 am | Sunday Morning Worship                      |
| Monday 23 <sup>rd</sup> | 10.00 am | Connect Group/Community Meal (all welcome). |

**Thursday 26<sup>th</sup> February** Closing date for items to go in the March 2026 Newsletter.

### Normal Weekly Meetings

|           |                     |  |
|-----------|---------------------|--|
| Monday    | 10.00 am - 1.00 pm  | Connect Coffee Morning   |
|           | 10.00 am - 2.00 pm  | Community Meals (Monday hot meal 10.00 noon - 2.00 pm) everyone welcome. |
|           | 1.00 - 5.00 pm      | Asian Men Meeting  |
| Tuesday   | 5.30 - 6.45 pm      | Beavers (Term time)  |
|           | 9.15 - 10.00 am     | Yoga Group   |
|           | 1.00 - 5.00 pm      | Asian Men Meeting  |
|           | 1.30 - 2.30 pm      | Seated Exercise Group  |
|           | 6.30 - 8.00 pm      | Cubs (Term time)   |
| Wednesday | 8.15 - 9.15 pm      | Footlights Stage School Adult Fun Tap                                    |
|           | 1.00 - 5.00 pm      | Asian Men Meeting  |
|           | 2.00 - 4.00 pm      | Sinfin Moor Church Friendship Club                                       |
|           | 6.00 - 7.00 pm      | Brownies (Term Time)   |
| Thursday  | 8.00 am and 9.30 am | Slimming World   |
|           | 1.00 - 5.00 pm      | Asian Men Meeting  |
|           | 5.30 - 6.30 pm      | <u>Squirrels (Term Time) in Middle Bay</u>                               |
|           | 5.30 - 6.45 pm      | Beavers (Term time)  |
|           | 7.00 - 8.30 pm      | Scouts (Term time)   |
| Friday    | 1.00 - 5.00 pm      | Asian Men Meeting  |
|           | 7.30 - 8.30 pm      | Footlights Stage School - Ballet   |

**Please advise the Editor when there are any changes to ANY of the above.**