

# Colton Parish News

## December 2025



Colour printing kindly donated by Benhill Press

© Gwen Johnson

Copyright Gwen Johnson

**Colton Parish News is sponsored by:**

**The Parish Lands Trust, St. Mary's Church & the Parish Council**

# St Mary the Virgin Church, Colton



Church Services		
First Sunday	Holy Communion	11.00 am
Second Sunday	Morning Worship	11.00 am
Third Sunday	Holy Communion	11.00 am
Fourth Sunday	Morning Worship	11.00 am
Fifth Sunday	Service Format will vary	11.00 am
Keep your eyes peeled for details of other services and Special Sunday Afternoon Events		

For all Baptisms, Weddings, Funerals and any Pastoral Needs  
please contact Reverend Lynne Dean

<b>Resident Priest</b> Reverend Lynne Dean The New Rectory Bellamour Way Colton WS15 3JW 07736 972560 lanternlit@hotmail.com	<b>Rector</b> Prebendary Simon Davis The Vicarage Market Place Abbots Bromley WS15 3BP	<b>Church Wardens</b> Mrs Rachel Bayliss 24 Moorcroft, Colton, WS15 3ND rachel.bayliss@outlook.com 07792 234720 Mrs Victoria Hawley The Old Rectory, Bellamour Way, Colton, WS15 3JW 07939 003153
<b>Messages to the Parochial Church Council : Mrs Katie Brown 07814 729148</b>		

## Message from your editor



Congratulations to Polly on being presented with the centenary cup for her entry in the annual WI writing competition. Her entry titled My Favourite Place is on page 14. On page 13 is a picture of WI members putting the finishing touches to the incredible remembrance display. Unfortunately it is not in colour but please view it in situ to see the glorious colours

I would like to wish you all a joyful and peaceful Christmas and a Happy and Healthy 2026

Best wishes

*Fiona*

**All Items for inclusion in the NEXT EDITION  
Must reach the Editor by 15<sup>th</sup> of THIS MONTH**



**coltonparishnews@gmail.com**

**Thank you Fiona O'Brien Editor**

### Colton Community Choir

Invite you to come along and join our group of Jolly singers. A group of enthusiastic amateurs who enjoy singing a variety of music. We meet every Monday at 7pm at St. Marys Church Colton.

Do come and join us.





# Colton Parish Council

The Parish Council meet on the first Wednesday of the month in the Village Hall commencing at 7:30 pm unless advised to the contrary.

Members of the public are welcome to attend and should note their participation is limited to a maximum 20 minutes at the beginning of the meeting when questions and comments from the public are taken

## Parish Council Elected members

---

### Chairman

No one elected at Annual meeting.  
Councillors will take turns to chair meetings

### Clerk to the Council

Ms Alison James  
Apartment 48  
Handsacre Court  
Rugeley  
Mob 07969266779  
Email [colton.pc@hotmail.co.uk](mailto:colton.pc@hotmail.co.uk)

Nigel Parry

Bank Top House

75 High St

Colton

Mob 07968823066

Email [njp5@blueyonder.co.uk](mailto:njp5@blueyonder.co.uk)

Noel Talbot

22 Moorcroft

Colton

Mob 07850655807

Email [noeltalbot@hotmail.co.uk](mailto:noeltalbot@hotmail.co.uk)

Garren Edwards

Mob 07890103450

Email [garren\\_edwards@hotmail.com](mailto:garren_edwards@hotmail.com)

Richard Montbiot

Mob 07710864138

Email [richard@richardmonbiot.com](mailto:richard@richardmonbiot.com)





St Mary's Church Colton

*What's on this*  
**CHRISTMAS**

**Carols by Candlelight**

Sunday 21<sup>st</sup> December

4pm

**Christingle Service**

Wednesday 24<sup>th</sup> December

4pm

**Midnight Eucharist**

Wednesday 24<sup>th</sup> December

10:30pm

**Christmas Day Holy Communion**

Thursday 25<sup>th</sup> December

9:30am

## **December letter for the Benefice magazines**

The other day as I walked into a supermarket a sign told me there were 42 days to go. It didn't tell me until what, but I guessed it meant till Christmas given the music that was being played and the amount of chocolates and glittery stuff that greeted me as I went in.

As I did my shopping I tried to persuade myself not to get too grumpy either then or in the weeks ahead as I endure the unseasonal decorations in the supermarkets. Am I the only one who stands under the sign that says seasonal goods and asks the assistant where the Advent products are?

Seemingly people do not know what season we are in or when Christmas actually is. Last year when doing my shopping on the eve of the feast I was gobsmacked to see staff taking the decorations down. I did share my shock at them removing stuff on the day when actually they should have been going up as Christmas was only just beginning.

Obviously practicalities mean that we can't leave everything to the day before but I think it is a shame that people seem not to know when Christmas starts and indeed when it finishes, for it is not something that is done and dusted on Christmas Eve or even Boxing Day.

The trouble with putting decorations up early, with spending so much time and energy in preparing to celebrate, in counting down to a day, is that when Christmas comes people think it's over and the partying and celebrations signify the end of something, the job is done the mission accomplished.

Nothing could be further from the truth, for if we celebrate Christmas we are celebrating the story of God's presence with us and that is a continuous one. It really isn't about one day or twelve days or even 40, if like me you think the Christmas season ends at Candlemass.

Despite my muttering bah humbug (and a few expletives along with it) throughout December as I do my shopping, I will celebrate at Christmas, and I will continue to party for longer than is good for my liver. But even when the excesses of the season have stopped I will still be celebrating.

Celebrating what I believe to be an eternal truth that our lives and God's life are bound together in Christ whose birth we choose to celebrate on the 25. God is present in and through all we experience, our sorrows and our joys, with us when life makes us weep or when we laugh, in the mundane and tedious moments and in the special occasions.

In the Christ child we see love embraced in human form, the word made flesh, as the writer of the fourth gospel puts it. That love is with each and everyone of us, with each and every person on the planet and is something from which we can't be separated.

That is a good reason for the celebration not to end.



# CHRISTMAS Crafts

Sunday 7th December

St Mary's Church, Colton

2-4pm

Get in the festive spirit with tasty treats  
and seasonal tunes!

Also includes wreath making!

Please bring along some foliage and any  
decorative items you'd like to share

*Fun for all ages!*

## **Observations From the Kitchen Window**

This is the time of year when geese are flying around interrupting the peace of the countryside. As I watch the squadrons flying overhead either in neat skeins or great untidy gaggles, I am constantly reminded of the phalanxes of cyclists who pass through the village. The decibels created by either group are way off the scale! Geese are like cyclists with wings. Whereas cyclists, all toggled up in their Lycra take command of the roads they occupy, yelling and shouting to each other hoping that those at the back of the scrum can hear what the leaders are saying. So it is with the geese. The birds take over the skies. It does not matter whether they are Canada geese or Pink Footed. With all their monotone honking, they all sound the same. As far as I can tell they all speak the same language without any trace of regional dialect expressed at the tops of their voices. Like cyclists you can hear them from miles away. Gender makes no difference. I suppose as a rural community we just have to accept these noise intrusions!



Talking about noisy intrusions, it has also been fun and games at home. I have had to face up to one of my worst nightmares. Having to update my laptop. I have been burying my head in the sand for weeks hoping that the need to change to Widows 11 was just a bad dream. What could be worse than having to spend hours or days changing to a new software system when I was perfectly happy with the one I already had. The only other thing that could possibly be even worse would be an invitation to become a contestant on a TV game show.

With digital communication having crept up as an essential part of current living we have no option other than to get pulled kicking and screaming into learning how to use it. 'Er Indoors has also been bombarded with messages about the impending demise of Windows10, and when she started to ask questions about what I had done about the change over, I knew I had to act.

Now, I like to delegate things that I don't want to do. Who better than to find a younger family member to come to the rescue of a pair of aged seniors? Fortunately, we have a son whose life and work lies in the mysterious world of computers and software. Obviously, we lean on him more frequently than he would really like, although he never complains within our hearing! So, with his arm twisted up his back he very nobly volunteered to carry out the work required to transfer our data onto the new system. The bad news was that he



had to find a suitable new laptop for me for the purpose. No such problems were found on 'Er Indoors' laptop where, of course, everything was in apple pie order. Sickening isn't it!? Was this why 'Er Indoors' computer was already compatible with Windows 11 and why we did not have to buy her a new one?? On his first visit to tackle the setting up of the new system, he almost fell off his chair in disbelief at what he found on my old machine. He said my filing system was a complete and utter shambles (although his actual words were far more colourful!). There were files randomly stored on the desktop. I have no idea how they got there because that is not a place I ever use for filing, and I certainly never use it when looking for information. Had 'Er Indoors' been tidying up without my knowledge? He also found all sorts of things I had saved in weird places. My folder used for my monthly Observations was also used, apparently, for minutes of Village Hall meetings, choices of Prosecco for the Garden Guild, AND details of past wine tasting evenings! Apparently, this was a complete horror story suitable only for Halloween! Maybe this explains of why I often cannot find what I am looking for! So, he created a new file headed "**things that were filed in the wrong place**". This turned out to be the biggest single file anywhere on my system!!!



He found many other anomalies hiding away which I could not explain, but gradually over time things have become sorted into a more manageable state. After he had made five visits and a period of 48 hours of downloading had elapsed, I was told that my new computer was ready for action "so don't mess it up again!!!".

Microsoft has completely changed the "toolbar". Nothing is still in its place. Now I am working to adjust my way of working to create a new comfort zone. I have to find the new way for saving documents, including filing things in the wrong places, making attachments on emails and other manoeuvres which have to be modified in this new topsy turvy environment. What I could deal with instinctively previously now requires me to stop and think and repeatedly use trial and error. What would have previously taken me 20 minutes to accomplish, has now stretched to an hour or more!

I am not even finding solace in a glass of wine!

*'Er Indoors and I wish everyone in Colton a Merry Christmas and Happy New Year*

## COLTON GARDEN & PRODUCE CLUB.



Hello to you all once again. The illustrated talk we had in November about Transylvania was fascinating and informative – Dracula was only mentioned very briefly at the end. The main problem is the Black bears, with all houses having high walls and gates to keep them out of the gardens! The talk we have arranged for December (Thursday the 4th) is “A Garden for All Seasons” by Diane Clements. I am sure she will be able to give you much more information and better guidance than I am able to give. There will also be our Annual Mince Pie competition – 3 mince pies presented on a plate for the judge to assess. We will, of course, hope to have any surplus pies as the refreshments for the evening, along with mulled wine or Prosecco – whichever you prefer. The speaker will be judging the mince pies.

It looks as if there could be cooler weather on the way. If temperatures drop below 10 Degrees in the day, the growing process will be halted, and there will be no need to continue the task of cutting the lawns. Just make sure the leaves have been cleared so no bugs can hibernate, and the grass can breathe. With any heavy frosts, it is best not to walk on the grass as the leaf stems will snap. Ensure that flower borders are also cleared of leaves, as they could be harbouring slugs and other pests. As the Dahlias die back with the first frosts, cut the stems down to a few inches from

the base. I have told you before that I do not lift my Dahlia tubers, but if yours are in heavy soil, they will rot, so they need to be lifted, soil shaken off and stored in a cool, frost-free environment with the tubers covered in fresh dry compost. I will dig up some of my tubers, as I want to divide them to increase my number of plants for next season. Just hope they will be as fantastic in 2026 as they have been this year.

If you would like some colour in the garden during the winter, there are several winter bedding plants you can use. Pansies, Violas, Primroses, Polyanthus and Bellis will all give you some winter colour – remember to deadhead them so they continue to produce new flower heads. The bulbs you planted in November will start to come through and provide some contrasting foliage and flower varieties during the early months of next year. Depending on the amount of room you have, there are other winter-flowering plants which will bring some welcome colour and cheer to the long dark days ahead. Various Dogwoods give some great coloured stems which will also wave gently in the breeze. A variety of grasses will also do the same and are a great background for the bedding plants and bulbs. I had not thought of some of the other options I have found out about, but a winter-flowering Clematis called Cirrhosa is a fabulous-looking flower.





Other plants need long-term planning as they take time to establish, such as Viburnum, which has fragrant apple blossom pink flowers. Some Prunus produce winter flowering cherry blossom. Then there is a Golden King Holly with its variegated foliage and clusters of red berries. This reminds me - you need to pick your holly and place it in a bucket of water in a sheltered position so the birds don't pinch all the berries before you need it for the Christmas decorations. I am sure our speaker in December will be able to give us a lot more advice and information.

The Christmas tree should be put into a bucket of water in a sheltered position until it is time to bring it indoors.

December is the month for cleaning pots, trays, etc and taking terracotta pots indoors to protect them from the frosts. Clear your vegetable plots of any debris or rotting vegetation, and protect your parsnips from frost by placing straw around the base, which will also make it easier to harvest them. Clumps of rhubarb can be lifted and divided, replanted into soil enriched with well rotted manure. A potted clump can be placed under a large bin to produce an early crop of sweet stems. Any geraniums or pelargoniums you have decided to save, should be regularly dead headed and faded leaves removed. The last of the perennials should be cut down just above ground level. I hope to move some of the Japanese anemones to sunnier positions after removing some overgrown shrubs – maybe I should try planting some in pots!

Whatever you do, please do not neglect our feathered friends. If it is frosty, fresh water should be put out every day, and they will appreciate a good supply of food in clean utensils – food high in fat, such as suet blocks or balls, will help to protect them from any long cold spell of weather. All the watering equipment you have used, hoses, sprinklers, etc., need to be taken indoors to prevent them from freezing and splitting – it is a good idea to give them a clean and make sure the sprinkler heads rotate freely.

A good indoor plant is an Amaryllis. If planted in December, it will take about 8 weeks before producing spectacular flowers for 3 or 4 weeks. A Christmas cactus should flower for a long time, and of course, there is the usual Poinsettia – beware of buying too early.

Remember, Keep SMILING, whatever you are doing.

Peter Brightman – 07896521941 // 01889803678

## WI Report November 2025



Despite a dull, dark evening outside, members were greeted by a riot of colour in the village hall. Karen Wakefield was our speaker for the night and had brought a mountain of colourful items to make autumn wreaths. These products were available at a very reasonable cost, as were templates in different materials. Karen had brought some beautiful readymade wreaths to show us all possibilities.

After a short demonstration 13 members settled down to start their own creations. Karen explained about putting all the foliage in first before adding the artificial flowers or dried components.

These autumn wreaths could be added too to make Christmas wreaths for next month.

Refreshments were served as the work was being completed; every single wreath was a triumph, and members were very pleased with their individual results. They posed for a group photo, together with Karen, and a very festive sight they made.



Karen judged the competition, which was for a flower ornament, and awarded the prize to Carol for her beautiful primrose trinket.

The raffle was drawn and won by Sonia, Carol and Janet.

Sue asked members to fill in the form for helpers at the forthcoming Colton Christmas Fair, Sunday 30<sup>th</sup> November, and asked for donations of cakes, preserves and seasonal goods. The Christmas Fair is one of our major fundraising events and we are hoping for a lot of support for our stall as well as for the Fair to be the usual success for the Parish.

Our members had enjoyed a curling afternoon earlier this month, good fun and laughter reigned. We intend to have a repeat session next year and hope that more members will come along to this most enjoyable event.

Wednesday 17<sup>th</sup> December is the date of our Christmas meal at Riverbank Restaurant in Stafford.

Monday 12<sup>th</sup> January 2026 – an invitation to a New Year Party at Kingstone WI

Advanced notice of the 2026 County Quiz – Thursday 18<sup>th</sup> June

**Our next meeting is Wednesday 10<sup>th</sup> December, 7.30 in the Village Hall. The speaker is Steve Geale and the subject of his talk is 'TV Sitcoms'. This sounds like an hilarious evening, and we would like to invite new members to come along and enjoy the evening with us.**



WI members put the finishing touches to the incredible remembrance display at the entrance to the village.

Last month Polly Macmillan attended the awards ceremony at the County Showground and was presented with The Centenary Cup for her entry to the annual writing competition. Each year the Staffordshire Federation of WI's hold a 500 word writing competition, the title this year being 'My Favourite Place'. See below.



### My Favourite Place

Sometimes dramatic, sometimes tranquil, always enchanting, the tree lined avenue that is Lady Anne's Drive guides you to the place that makes me happy, Holkham Bay.

Flanked on either side by wet meadows teeming with wildfowl in the winter, sparkling with wildflowers in the summer. Families with children, wellies in winter, sandals in summer, mostly with a dog or two in tow, birdwatchers and photographers with their expensive optical equipment, all making their way to the spectacular sand dunes and pine woods.

In winter the pink footed geese fly high overhead in V formation from their daytime feeding in distant fields to roost in the meadows, their call sounding like squeaky bicycles. Swans pass over with soundless flight. Curlews and lapwings call to each other and hundreds of teal and widgeon whistle between themselves as they feed on the lush grassland.

The margins of the bay, to the east and to the west, are edged with magnificent Scots Pine, interspersed with huge Holm Oak trees, planted many years ago to give shelter to Holkham Hall, the home of The Earl of Leicester and his family.

In the rain the woods are dark and forbidding, but in sunlight they are magical, fairy-like, with shafts of light breaking through the dense evergreen canopy to play on the pinkish- brown pine tree trunks, a playground for

visitors to lose themselves, (sometimes literally), in this magical wonderland.

The pine woods give way to undulating sand dunes covered in marron grass, sparse scrub and seedling pines. Paths worn through the dunes over many years, even centuries, lead to the sparkling sea.

Tides can be notoriously fast flowing in this beautiful landscape, forming salt marshes and tidal pools, fabulous habitat for rare plants and wading birds. In winter the salt marshes are a haven for snow bunting and shore lark. Birdwatchers stand in the sun watching for these rare visitors, binoculars at the ready. People and dogs wander about in the more public areas, just enjoying being by the sea. However many people are around it always seems empty, so much expanse of sand, sea and sky.

In summer families make their way through the vast sand dunes to the twinkling sea, buckets and spades in eager young hands; parents wrestling with deck chairs, rugs and picnic hampers.

The dunes shift and change in the strong easterly winds that are a feature of this Norfolk coast, growing and diminishing with the natural elements.

The tide runs out for what seems like miles, leaving immense expanses of sand interspersed with small lagoons, so ideal for children to splash and splosh in, shrimp nets at the ready. Clouds and sky appear to merge into the sea, the landscape disappearing into the far distance. Blue sky can give way to dark forbidding clouds in a moment; wind give way to gentle breeze; sunny balm becomes driving rain, but this place is always stunning, heartwarming, and endlessly, hauntingly beautiful. My favourite place in the whole world.

**SUMMARY OF COLTON PARISH COUNCIL MEETING ON WEDNESDAY  
5<sup>th</sup> NOVEMBER (Full minutes will be available at [www.coltonpc.org.uk](http://www.coltonpc.org.uk)  
after approval at the December meeting)**

1. Planning Matters – Applications had been received for side and rear extensions at School Cottage, Bellamour Way (no objections raised) and recently for porch and rooflight at 6 Martlin Lane.
2. Highways, Footpaths and Open Spaces
  - a) Flooding and highways maintenance - Community Meeting with SCC FAIR team on 11<sup>th</sup> November, to explain objectives and begin to co-design flood mitigation, had been advertised in the parish magazine, on Facebook Residents page and notices put up by SCC officer. It was hoped that parishioners would support the initiative.
  - b) Request to HS2 to maintain its hedges – Clerk had finally received a response from HS2 agents Carter Jonas and had passed on information from a parishioner about the specific locations.
  - c) Speeding - Email received from County Cllr Janet Higgins (JH) offering 1 road nomination per parish for Neighbourhood Speed Check Initiative. Councillors had not reached a consensus by email as to which section of B5013 to nominate. It would be helpful to know if other parish councils had nominated the section near the reservoir/Admaston. Both that section and the section from Bellamour Way to Rugeley Trent Valley were considered dangerous and had a history of accidents. **Clerk** to reply to JH.
  - d) Suggestion from parishioner for priority road sign at brook bridge – An email had been received from JH that afternoon with correspondence from Highways about the potential for a new sign giving priority to drivers leaving the village. Cost sounded very high at possibly £4-5,000. JH had offered a contribution of £2,000 but PC would have to cover the remainder and councillors felt this was too expensive. The correspondence would be considered further and discussed at the next meeting.
  - e) PC arrangements for grounds maintenance in 26/27 and beyond – Complaints about the level of care of grass cutting in the Open Burial Ground would be brought to the attention of the contractors. However, the regulations state that relatives are responsible for looking after graves and councillors thought



relatives should be prepared to brush off any stray grass cuttings, remove dead flowers etc.

- f) CIL money - £1,120.39 of CIL, received from LDC, must be spent on infrastructure. One possibility is the sign at the brook bridge discussed earlier. Other ideas would be considered for discussion at the next meeting.

### 3. Other Parish Council matters

- a) Improved signage for Village Hall – The email correspondence sent earlier in the day by JH included information about the process and fee for applying. **Richard Monbiot** would take this to VHMC for them to consider.
- b) Maintenance of the parish defibrillators – As the machine at the Dun Cow is inside the pub, **Noel Talbot** would ask the landlord if he will take on the maintenance. New landlords at the Greyhound would be asked in due course if they could maintain the one there.
- c) Date of next meeting – Wednesday 3<sup>rd</sup> December - 6.30pm for 26/27 budget discussion with main PC meeting following at 7.15pm approximately. **Clerk** was asked to contact MP's office to ask for an acknowledgement and feedback following the information previously supplied justifying the precept set for this year.

## **Colton History Society October Meeting. "Who Do You Think You Are"**

This month's talk was given by history society member Sonia Jenkinson. Sonia has spent many hours researching her family history and based on her experience gave us a talk full of tips, research tools and ideas for anyone wanting to do the same.

She suggested a good way to start was to think and record what you already know about your family. Ask relatives for information. See if any of them have copies of birth, marriage, death certificates for any family members. Some families had a family bible often recording names in them. Once you have got as much as you can this way you can use search engines to explore deeper. The major ones such as Find My Past, Ancestry or Genes re united will have a subscription charge but do give a free trial period. Family Search is free although more limited on what it offers. B.M.D. is also free but only records births deaths and marriages. Most libraries offer free access to family research tools.

A good way to start your research on these sites is by using Census records. These started in 1841 and have been repeated every 10 years. If you know a name and possible place of birth you can extract all sorts of information from the Census such as actual address, number of family members, ages, occupations and where they were born. This can lead you to other records such as Parish records of births, marriages and deaths. These records date back to the 1600's but are often incomplete or hard to read the further you go back as they were written by the Parish priest. Other records that you can use are military records, inquest reports, newspaper articles. Start recording your information and the search engines show you the best way to do this. As you find each new piece of info record it because it is very easy to lose track of information the more you get.

Other sources of information are local history websites. Colton History society has all the Parish records on our site for example. County record offices will give you access to a wealth of information again accessible online and Stafford has an excellent centre for Staffordshire records. Some tips Sonia suggested if you start getting dead ends are try putting siblings names into the search engine, try alternative surnames especially for surnames pre 1850. Add your family tree to the website and it will connect you to other people who are also researching your family. This can often move your research on in leaps and bounds. A warning though this can also lead you on a false trail. American researchers in particular have a habit of trying to link their family tree to someone of importance!

Researching the history of your family can become obsessive and you may spend hours doing it but it can be a lot of fun and can also be very interesting.

## Friendship Club: October Report



Colton Friendship Club welcomed back Kevin Reynolds who, on this occasion, delivered a talk 'The Pigeon - from the Gods to the Gutter.'

Kevin delivered a fascinating talk defending a much-maligned bird. He started by describing how people's opinions of the humble pigeon were divided, arousing dislike from some and support from others.

Kevin delved into the history of mankind's relationship with the pigeon, with evidence going back 5000 years. In the Bible, it was a dove (doves being from the same family as pigeons) that brought a leaf to Noah in the ark as evidence that dry land was nearby. In more recent times, the excrement from the bird was marketed as excellent fertiliser and as an essential ingredient in gunpowder, saltpetre (potassium nitrate).

During the two World Wars both sides used pigeons to deliver messages – indeed, of the 75 Dickin medals (the highest award any animal can receive whilst serving in military conflict) awarded, 32 were awarded to pigeons.

Kevin certainly gave us plenty of reasons why this bird should be regarded as a 'dove of peace' rather than a 'rat with wings'.

### Business Meeting

- Members were reminded that, as usual, a Christmas hamper will be constructed for the December raffle prize, using food/drink items donated by members. Please contact me (Karen) if you would like to donate something (but haven't yet done so) no later than Saturday 6<sup>th</sup> December.
- Our next meeting will be held on Wednesday 10<sup>th</sup> December (**a week earlier than usual**) where we shall have sherry and mince pies and will welcome the staff and children from St Mary's school, who will sing for us and put us in the festive spirit!

**Karen Hill**  
**01889 586 379**

EXTERNAL ORGANISATIONS CONTACTS

Name	Contact No or E-mail	Web site Address
<b>Lichfield District Council</b>		
Customer Services	01543 308000	<a href="https://www.lichfielddc.gov.uk/">https://www.lichfielddc.gov.uk/</a>
Out of Hours	01527 406643	<a href="https://www.lichfielddc.gov.uk/">https://www.lichfielddc.gov.uk/</a>
Waste and Recycling	0345 002 0022	<a href="https://www.lichfielddc.gov.uk/recycling-bins-waste">https://www.lichfielddc.gov.uk/recycling-bins-waste</a>
District Councillor – Keth Vernon	07711758852	
<b>Miscellaneous Numbers</b>		
Age Concern Advice Line	0800 678 1602	<a href="https://www.ageuk.org.uk/">https://www.ageuk.org.uk/</a>
Childline	0800 1111	<a href="https://www.childline.org.uk/">https://www.childline.org.uk/</a>
Citizen advice - Lichfield	0808 278 7977	<a href="https://www.casestaffs.org.uk/">https://www.casestaffs.org.uk/</a>
Crimestoppers	0800 555 111	<a href="https://crimestoppers-uk.org/">https://crimestoppers-uk.org/</a>
Cruise Bereavement Line	0808 808 1677	<a href="https://www.cruse.org.uk/">https://www.cruse.org.uk/</a>
Deer casualty Line	101	<a href="https://www.deeraware.com/report-incident/">https://www.deeraware.com/report-incident/</a>
Domestic Violence	0808 2000 247	<a href="https://www.nationaldahelpline.org.uk/">https://www.nationaldahelpline.org.uk/</a>
Drug/Alcohol Information line	0300 123 1110	<a href="https://www.staffordshire.gov.uk/Health-wellbeing-and-leisure/Keeping-well-and-staying-healthy/">https://www.staffordshire.gov.uk/Health-wellbeing-and-leisure/Keeping-well-and-staying-healthy/</a>
Electrical Power Loss	105	National Grid ED (West)
Gas escape	0800 111 999	
Highway repair Hotline	<a href="https://www.staffordshire.gov.uk/">0300 111 8000</a>	<a href="https://www.staffordshire.gov.uk/">https://www.staffordshire.gov.uk/</a>
NHS Direct	111	<a href="https://www.nhs.uk/">https://www.nhs.uk/</a>
Neighbourhood Watch	Back Page	<a href="https://www.staffordshiresmartalert.co.uk/">https://www.staffordshiresmartalert.co.uk/</a>
Relate		<a href="https://www.relate.org.uk/">https://www.relate.org.uk/</a>
Rugeley Library	01889 869063 <a href="mailto:rugeley.library@staffordshire.gov.uk">rugeley.library@staffordshire.gov.uk</a>	
Samaritans	116 123	<a href="https://www.samaritans.org/how-we-can-help/contact-samaritan/">https://www.samaritans.org/how-we-can-help/contact-samaritan/</a>
Social Services	<a href="https://www.staffordshire.gov.uk">0300 111 8010</a>	<a href="mailto:staffordshirecares@staffordshire.gov.uk">staffordshirecares@staffordshire.gov.uk</a>
Staffordshire County Council	0300 111 8010	<a href="https://www.staffordshire.gov.uk/">https://www.staffordshire.gov.uk/</a>
Staffordshire County Councillor- Richard Cox	01543 490758 <a href="mailto:Richard.cox@staffordshire.gov.uk">Richard.cox@staffordshire.gov.uk</a>	
South Staffs Water	0800 389 1011	<a href="https://www.south-staffs-water.co.uk/contact-us/">https://www.south-staffs-water.co.uk/contact-us/</a>

## Colton Organisation Contacts

<b>Colton Local nature reserve</b> John MacMillan Tel: 01889 575394 Email:mrjkmac@sky.com	<b>Colton Parish Council</b> Ms Alison James  Tel: 07969266779  Email:colton.pc@hotmail.com
<b>Village Hall</b> <b>Bookings</b> Fiona O'Brien Tel: 07784497048 Email:bookings@coltonvillagehall.co.uk  <b>Management committee</b> John MacMillan Tel: 01889575394 Email:mrjkmac@sky.com	<b>Parish Lands Trust</b> Claire Collier Tel: 07966637044 Email:clerk.cplt@gmail.com
<b>St. Mary's Primary School</b> Mr Jon Wynn-Head Teacher Tel: 01889224506 Email:stmarysoffice@tssmat.staffs.sch.uk	<b>Colton Community Choir</b> Ruth Jones Tel: 01889 570724 Email: ruth46jones@gmail.com
<b>Colton Old People's Welfare Committee</b> Mrs Amanda Pratt Tel: 07976975960 Email: mandspratt@msn.com	<b>Colton Women's Institute</b> Email:secretarycoltonwi@gmail.com
<b>Colton Produce Guild</b> Mr Peter Brightman (Chairman) Tel: 07896521941 Email: pd.brightman@hotmail.co.uk	<b>Burial Ground Trustee</b> Ms Alison James  Tel: 07969266779  Email:colton.pc@hotmail.com
<b>Colton History Society</b> Mrs Gill Sykes Email: gillsykes@btinternat.com	<b>Colton Friendship Club</b> Mrs Karen Hill 01889 586 379

# Colton Crafters

At the Village Hall, Colton



Meeting on 2nd and 4th  
Mondays of the month  
1pm — 3pm

All welcome  
An opportunity to meet  
with fellow crafters  
and enjoy crafting in an informal group



Lynne Dean  
07736972560  
[lanterlit@hotmail.com](mailto:lanterlit@hotmail.com)

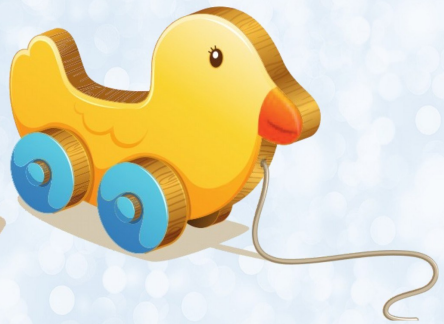






INFAMOUS ARTS PRESENT

# THE TOYMAKER



**A Family Festive Show of Traditional Stories  
from Around the World!  
Free! Suitable for ages 5+, duration 45 mins.**



**Show times: 11am & 1.30pm  
Saturday 6<sup>th</sup> December, Rugeley Library**

**\*Book your free place\***

**[rugeley.library@staffordshire.gov.uk](mailto:rugeley.library@staffordshire.gov.uk) | Tel 01889 869063**



DEvised & CReated By  
**MATT LLOYD      JACK TROW**  
**[WWW.INFAMOUSARTS.GO.UK](http://WWW.INFAMOUSARTS.GO.UK)**

**YOUR  
LIBRARY**  
 **Staffordshire  
County Council**

# WOODSMAN

LOG BURNERS & STOVES

- USED LOG BURNERS
- NEW LOG BURNERS
- REPAIRS
- REFURBISHMENTS



0330 223 7170

WOODSMANBURNERS@GMAIL.COM



# WOODSMAN

CHIMNEY SWEEP & REPAIR

- CHIMNEY SWEEP
- PROFESSIONAL
- RELIABLE
- ACCREDITED



0330 223 7170

WOODSMANBURNERS@GMAIL.COM



# REFLEXOLOGY



Colton Residents  
1st Appointment  
Reduced  
£50 to £45

**Clinical reflexology** is a therapy with deep roots in ancient traditions, originating in China approximately 4,000 years ago. Reflexology involves applying pressure to specific points on the feet that correspond to various organs and systems in the body. These reflex points are linked to different bodily functions, promoting healing and fostering balance 'homeostasis'.

**Recognised by the NHS, Clinical Reflexology is commonly used to relieve stress, manage pain, and enhance overall well-being.** Research indicates that it may help reduce anxiety, improve sleep quality, and elevate mood. While it should not replace medical treatment, Reflexology is appreciated for its ability to enhance quality of life and complement traditional medical practices, as more people seek natural, integrative and drug free health options.



*Rose is a skilled Clinical Reflexology Practitioner running a successful clinic in Colton (Rugeley). She is listed on the NHS website as a recognised practitioner and holds membership in the Association of Reflexologists.*

**To arrange an appointment contact:**

**EMAIL:**

**ROSE@THEGOODZESTCOMPANY.CO.UK**

**TEL OR TEXT: 07719023882**

**WEBSITE:**

**WWW.THEGOODZESTCOMPANY.CO.UK**

Appointments are available  
Weekdays and Saturdays.

Based in Colton Village  
(WS15 3FF). Due to demand  
Home visits & evenings no  
longer available



## T Smith & Son Plumbing

..ALL DOMESTIC PLUMBINGWORK AND REPAIRS  
UNDERTAKEN.

..SPECIALIST IN

..BATHROOM INSTALLATION

..WET ROOMS

..KITCHEN INSTALLATION

..PLASTERING WALLS AND CEILINGS

..CALL FOR FURTHER DETAILS

DAN ON 07540495913

TERRY ON 07590928071

[dan-tsmithandson@hotmail.com](mailto:dan-tsmithandson@hotmail.com)





# Panelscape

ELEVATING WALLS AND ENHANCING FLOORS

- ✓ Premium waterproof wall panels and flooring
- ✓ Transforming spaces at home, work and recreational
- ✓ Sleek and modern designs for any space

📍 Unit 16, Trent Valley Trading Estate, Rugeley, WS15 2HQ

📞 01889 576669

🌐 [www.panelscape.net](http://www.panelscape.net)

🌐 [orders@panelscape.net](mailto:orders@panelscape.net)





# Colton Art Club



EVERY WEDNESDAY

10am–1pm

COLTON VILLAGE HALL



The Art Club is run by local artist Della Welch



**Come along & join in the fun!**

My aim is to provide a fun, friendly & productive environment in which all skill levels are welcome & encouraged to artistically thrive; the classes are ideal for beginners, those looking to reinvigorate their practical art skills, wanting to learn to work with a new medium or to just simply have a few hours of focussed creativity each week in a relaxed & informal setting.



Our Art Club has been running since August 2016 and continues to run on a Pay-As-You-Go basis, so you can attend just on the weeks that you're able (GIFT VOUCHERS are also now available, please see full details below); each week we look at various subject matter & artistic styles & explore different media along the way.

Everyone participates at their own pace & I provide guided tuition throughout each session to encourage personal development of your own ideas & knowledge.

## NEW MEMBERS ARE ALWAYS WELCOME

Simply turn up if you fancy giving the club a try or if you would like to treat someone who is interested in attending the art club, I now offer GIFT VOUCHERS which can be bought in advance for single or multiple sessions and can be used on any Wednesday.

If you'd like to purchase Gift Vouchers, please contact me.

Everyone's first class is half price at £7.50 (inc. Gift Vouchers), full fees apply thereafter

- All materials provided (just bring an apron)
- Refreshments provided

Just come along or for more info please contact Della Welch;

[mrswelchsartclub@gmail.com](mailto:mrswelchsartclub@gmail.com) or 07792 741219





**COLTON & COLWICH TAI CHI**

# T'ai Chi

**for better health**



**EVERY TUESDAY AT  
COLTON VILLAGE HALL  
10 - 11 AM**

**£5 PER SESSION (BOOKED ONLY)**

For enquiries and booking, please contact Andrew or Gloria  
on **01889 808449** or **07941 650255**  
or visit the website for more information

**[www.ColwichTaiChi.org.uk](http://www.ColwichTaiChi.org.uk)**

BORDER COLLIE

TRUST

G.B.

## Acres Fold Boarding Kennels

AT BORDER COLLIE TRUST (G.B.)

BORDER COLLIE

TRUST

G.B.

Heathway, Colton  
Near Rugeley, WS15 3LY  
Tel: 01 889 577 058

Please call or visit for a brochure or  
Visit our website

[www.bordercollietrustgb.org.uk](http://www.bordercollietrustgb.org.uk)

for full details of the boarding kennels and our current costs.

Open 7 days a week 9.00 am to 12.00 pm & 2.00 pm to 5.30 pm

**ALL PROFITS TO BORDER COLLIE TRUST**

Registered Charity 1053585

## Durrant

### Funeral Service Ltd

*"Our family caring for yours at a time of need"*

We are a family run funeral service with over 40 years  
experience.

We can arrange Burials & Cremations to suit all

Budgets from £2500 for a Cremation inc all statutory fees.

(We will price match any quotes you have for the same service)

**81 Fernwood Drive, Rugeley**

**01889 574593**

(24 hours a day)

# Mobile Foot Care

**Jane Knight RGN. MCFHP. MAFHP**

- Corns
- Verrucae
- Calluses
- Ingrowing toe nails
- Nail trimming & filing
- Reduction of thick nails
- Treatment of fungal infections
- Consultation & advice



**01 889 590 114**



**07 791 625 378**

Dec20

## Cathedral Chem-Dry



Cleaning carpets & upholstery locally, regularly & professionally

33 Darnford Lane,  
Lichfield WS14 9RW

Website: [www.cathedralchemdry.co.uk](http://www.cathedralchemdry.co.uk)

**Tel: 01543 418811**

**Mobile: 07817038349**

# M&S Window Cleaning

Provide a 5 Star Rated Window Cleaning Service



A Trusted Trader with over 1,400 likes on Facebook & Over 130 5 Star Reviews & Recommendations on Facebook

We are reliable and affordable, our services are easy to book and guaranteed to meet all of your requirements

★ Gutter Cleaning & Unblocking

★ UPVC Fascias

★ Soffitt & Gutter Cleaning

★ Gutter Repairs

★ Conservatory Cleaning

★ Block Paving & Drive Cleaning

★ Window Cleaning

★ And More!



01 889 800 545



mandscleaning@live.co.uk

Ask for  
ANDY



07 870 740 371



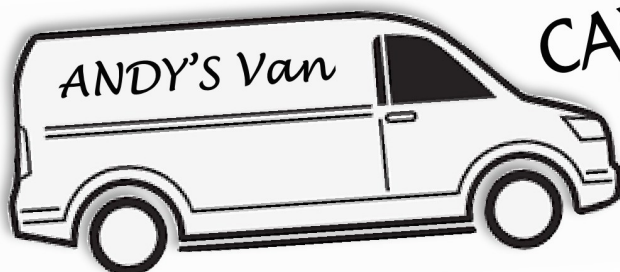
M&S Window Cleaning

*Text address & postcode, we will contact you & arrange time & date to visit*

Jan 2021

# MAN WITH A VAN

CALL ANDY!



07 870 740 371



01 889 800 545

Single Items

Full Loads

Sheds Empties

House Clearance

Garage Clearance

Rubbish Removal

Aug 2020