



UPPER
COQUET
RESOURCE
GROUP
Supporting the Local Community
Registered Charity Number: 1083085

Upper Coquet Resource Group COMMUNITY NEWSLETTER SEPTEMBER 2025



Supported by

Newsletter Circulation

It is great that we are still welcoming new names to our circulation list. Please can we ask you to continue to spread the word so that everyone knows and can sign up to the blind copied circulation list by contacting Tracey on the email below. Plus, if you are able to print a copy to share with someone without internet then thank you. Items for the newsletter can be sent in electronic form ahead of the monthly submission deadline to Tracey Boldy via stickypud@harbottle.net

Planned 2025 dates: submission deadlines with electronic distribution by the end of each month are:

Issue	Wednesday Deadlines 2025
October	24/09/25
November	22/10/25
December/January 2026	19/11/25

DOUBLE ISSUE

NEW: UCRG 2026 Calendars are being prepared and we should have them out for sale in October - more details in the next newsletter. Christmas Pressie headache solved.....thank us later! We are grateful to everyone who makes this fund raising calendar such a success each year, adding vital cash to our pot of money to use locally.

NEW: FREE FIRST AID TRAINING COURSE

The **Upper Coquet Resource Group** has organised another first aid course on **Saturday 20th September** from 9.00am – 3.00pm in **Harbottle Village Hall**.

The “Emergency first aid at work” course is intended to give a basic understanding of first aid and introduce the participant to the fundamental, theoretical and practical aspects of first aid management. This certification is valid for three years, suitable for low risk working environments and small business needs. Certification meets the requirements of the Health and Safety Executive Regulations. The training will be delivered by Northern Training Partnership Limited.

The course is **FREE** and if you would like to attend then please contact Susan Rogerson by email: jsjrogerson@btinternet.com to book a place.

NEW: The 2025 Upper Coquet Resource Group Shillmoor Duck Race

Thank you to the many people who very kindly took part in this annual fund raising event by sponsoring the hundreds of little yellow ducks that were carefully unloaded into the River Coquet off Shillmoor Bridge during the summer. Thankfully water levels were sufficient to provide a good close race and challenge the catchers at the finish line.

All profits go towards the UCRG efforts in continuing to support local groups, defibrillator supplies, first aid courses and events. Thank you.

Harbottle School Community GROUP continues to collect and sell both new and preloved puzzles, be they 300-2000 pieces. XL piece jigsaws are especially popular. Funds raised go towards the group’s endeavours to help pay for the annual ground rent for the top field so that the school children and community have access to a green space for playing, plus covering the costs of refreshing the planters. Other past efforts have included supporting getting the school Bistro off the ground, out of school clubs, craft classes, and sending out the bat signal for locals and businesses to gather to maintain the school grounds e.g. maintenance, painting, gardening, tidying, gravel installation.....all help always very much appreciated.

Should you wish to purchase/donate jigsaws, please contact Tracey Boldy, Pauline Bickle, Ann Hennessy or Margaret Ward. We have also tried our luck at selling online and this is proving a popular way to bring in additional income for the group.

The UCRG monthly quiz sheets you may see in various outlets can be purchased for the year ahead. They are coordinated by Margaret Ward (01669 650317) and they have been a fantastic steady way to boost our funds over the years. We continue to be grateful to Margaret and all those who regularly support this fun activity.

SAVE SOME DATES

Further details for each event plus many more are detailed in the articles within this newsletter. Enjoy.

Forever Yung Dance: Ongoing cycle of lessons, always welcoming both beginners and those with dance experience. Lots of fun and great instruction. Ballroom/Latin Line dance lessons on Wednesday mornings plus ballroom/salsa on Friday evenings. First dance, Father/Bride dance and 1:1 tuition also available (p11).



Children's Yoga: Every Thursday during term time 4.30-5.30pm in Harbottle Village Hall. Starting Thursday 11th September (p7)

Coquetdale Music Trust: Sunday 31st August, Thropton: Claude Bourbon (progressive blues) (p12)

Churches Together: Sunday 31st August at Alwinton Church with coffee afterwards. All very welcome (p22).

Rothbury Education Trust: Monday 1st September: Deadline for submissions for grants (p20).

Coquetdale Wildlife Group: Monday 1st September, 7.30pm Jubilee Hall: "The wildlife on Coquet Island" by Rebekah Goodwill (p18).

151st Harbottle Show: Saturday 6th September 2025: The Oak Field Harbottle (p8-9).

The Star Inn, Harbottle: Saturday 6th September, 12 noon: Harbottle Show Day, inc Auction of Produce (8pm) plus live Music with Ten Bob Blind (9pm). Late licence until 1am. Last order food at 8pm (p10).



Rothbury Maker's Market: Saturday 6th September, 10am – 4pm at Jubilee Hall, Rothbury (p16).

National Alert: Sunday 7th September: UK to test National Emergency Alert System by messaging mobile phones (p17)

Hepple WI: Thursday 11th September: Helen Poremba, Textile Artist, Demonstration. Competition: Hand-made Fabric Item (p5)

Repair Café: Saturday 13th September, 10am-2pm, Jubilee Hall Rothbury (p13).

Friends of Harbottle First School Meeting: Thursday 11th September at 6pm in The Star Inn, Harbottle. All welcome (p7).



The Star Inn, Harbottle: Saturday 20th September, 8pm: Cheviot Folk Night in The Courtyard Barn (p10).



UCRG First Aid Course: Saturday 20th September from 9.00am – 3.00pm in Harbottle Village Hall. Free. (p1).

Thropton Show: Saturday 20th September 2025. Cash only.

UCRG Newsletter: Submission deadline for October edition is 24/09/25 (p1)



The Star Inn, Harbottle: Saturday 27th September, 8pm: Live Accordion Music Night (p10)



Café Church: Sunday 28th September, 3-6pm: Harbottle Village Hall (p6, 23).

Coquetdale Music Trust: Friday 3rd October, Thropton: Methera (string quartet) (p12)

The Star Inn, Harbottle: Saturday 4th October, 8pm: Acoustic Music Night in the bar (p10)



Rothbury Maker's Market: Saturday 4th October, 10am – 4pm at Jubilee Hall, Rothbury (p16).

Coquetdale Wildlife Group: Monday 6th October, 7.30pm Jubilee Hall: "Return of the Otter: Tracking Otters & Recovery in the North East England" by Vivien Kent (p18).

Hepple WI: Thursday 9th October: David Jones, Coquetdale Archaeology. Competition: Artefact (p5).

Alwinton Show: Saturday 11th October 2025. Adults £10, under 16s & car parking free.

The Star Inn, Harbottle: Saturday 11th October, 12 noon: Alwinton Show Day (p10).



The Star Inn, Harbottle: Saturday 18th October, 7.30pm: Cheviot Folk Night in The Courtyard Barn (p10).



UCRG Newsletter: Submission deadline for November edition is 22/10/25 (p1).



Community social dance: Saturday 25th October, Harbottle: "Spooktacular Halloween Dance" with half hour Tango workshop (p11).



Coquetdale Music Trust: Sunday 26th October, Thropton: Hannah Sanders & Ben Savage (p12).

Café Church: Sunday 26th October, 3-6pm: Harbottle Village Hall (p6, 23).

The Star Inn, Harbottle: Saturday 1st November, 8pm: Acoustic Music Night in the bar (p10).



SAVE SOME DATES continued

Rothbury Maker's Market: Saturday 1st November, 10am – 4pm at Jubilee Hall, Rothbury (p16).

Coquetdale Wildlife Group: Monday 3rd November, 7.30pm Jubilee Hall: "Wildlife Sounds of Northumberland and the Borders" by Geoff Sample (p18).

Hepple WI: Thursday 13th November: Ewa Kochanoliska & Tomasz Krybus: "Poland: Its Landscapes & Its Christmas Traditions. Competition: Foreign Souvenir (p5).

The Star Inn, Harbottle: Saturday 15th November, 7.30pm: *Cheviot Folk Night in The Courtyard Barn (p10).*

UCRG Newsletter: Submission deadline for the double December/January 2026 edition is 19/11/25 (p1).

Coquetdale Music Trust: Saturday 22nd November, Thropton: Tom McConville/Michael Biggins (p12).

The Star Inn, Harbottle: Saturday 22nd November, 8pm: *Live music night with Danielle Keyes (p10).*

Repair Café: Saturday 22nd November, 10am-2 pm, Jubilee Hall Rothbury (p13).

Café Church: Sunday 23rd November, 3-6pm: Harbottle Village Hall (p6, 23).

The Star Inn, Harbottle: Saturday 29th November, 8pm: *Live music night with Vestlife (p10).*

Coquetdale Wildlife Group: Monday 1st December, 7.30pm Jubilee Hall: "Natural History in Morocco's High Atlas Mountains" by Phil Hanmer (p18).

Rothbury Maker's Market: Saturday 6th December, 10am – 4pm at Jubilee Hall, Rothbury (p16).

The Star Inn, Harbottle: Saturday 6th December, 8pm: *Acoustic Music Night in the bar (p10).*

Community Social Dance: Saturday 13th December, Harbottle: Christmas dance with half hour quick step workshop (p11).

The Star Inn, Harbottle: Saturday 20th December, 7.30 pm: *Cheviot Folk Night in The Courtyard Barn (p10).*

NETHERTON

Netherton exercise class: Drop in and have a go at Chair Based Exercises, every Monday 10am to 11am in Netherton Village Hall. Everyone is welcome, £3 per person per session.

For more information call Charlotte on 01669 640265 or email Charlottebx@gmail.com

Netherton WI: New members always welcome. For further information please contact Joan Blakey.

Netherton Village Hall Coffee mornings: the Hall Coffee mornings are normally held on the First Monday in each month from 11am until 12noon. Everyone is welcome, sanitisers are available and masks may be worn if desired.

The Netherton Craft Group: We meet in Netherton Memorial Hall at 2pm until 4pm on the 3rd Thursday of the month. Come along and join us for chat and an afternoon spent with like-minded company. Please bring along anything you are currently working on. We also knit small blankets, cardigans and hats for premature babies. We very much look forward to welcoming you to the Group so if you require any further information please contact Judith on 01669 631189 or email judith_barton256@btinternet.com



CLENNELL

NEW: Clennell Hall

**NOT YOUR AVERAGE
JOE**
PERFORMING LIVE

**SATURDAY
6TH
SEPTEMBER
8.30PM**



Clennell Hall
presents
nick chambers
**Freddie Starr
Tribute Show**

**SATURDAY 4th OCTOBER
8.30pm**
Tickets £10 07434 867939
Alwinton, Northumberland, NE65 7BG

6TH Freddie Starr TICKETS £10

**RICHY
YOUNG**
Saturday 11th
October 8.30pm

FEATURED ARTISTS:
GERRY CINAMMON
BRYAN ADAMS
PAOLO NUTINI
THE EAGLES
ROD STEWART
NEWTON FAULKNER
SIMON & GARFUNKEL
FLEETWOOD MAC
JOURNEY

6TH FREE ENTRY

TINY AFRO



TINY AFRO
SAT 18th OCT
8.30pm

6TH FREE ENTRY

**CLENNELL
COUNTRY MUSIC
FESTIVAL 2025**
12th -14th September
Clennell Hall, Alwinton, Morpeth, Northumberland, NE65 7BG

Full weekend ticket £60 - Children £30
Full weekend camping Thurs-Mon £30 per unit
Ticket Hotline - 07434 867939 (Dee)

**MILLWOOD DUO
THE JASON ARNUP BAND
BRUSHWOOD
ZENNE
ROCKIN HORSE
CHRIS JOHNO JOHNSON
ROSEMILL KIX
ROBERT E LEE**

Raffles late bar jamming sessions

Music★Food★Drink★line dancing

TICKET HOTLINE (DEE) 07434 867939

Always a great weekend of music and line dancing, with 2 camping/motorhome fields this year and 4 nights camping for the price of two, with a weekend ticket! TICKET HOTLINE 07434 867939 🍷

HEPPLE

Hepple Village Hall:

Seated chair exercise:	Thursdays 10-11am
Northumberland Basketry Group:	3 rd Wednesday of the month
Table Tennis:	Tuesdays 7pm

Hepple WI: regular Thursday meetings and activities, including guest speakers. New members always welcome.



Table Tennis is at Hepple Village Hall on Tuesday evenings at 7pm. All welcome.



Northumbria Basketry Group meets monthly, mostly, on the 3rd Wednesday of each month between 10am-4pm. New members are always welcome. Please contact Gill Phillipson for extra details and queries.

Chair Based Exercise in Hepple:

Chair based exercise will benefit everyone; you don't need to be chair bound to benefit.

The Hepple Seated Chair Exercise runs every Thursday 10am-11am.

For information contact Chris Wilson: 01669 640012 or Chris.wilson601@btinternet.com

Hepple Women's Institute Programme 2025-2026

Thursday Meeting starts at 7.00 pm,
Hepple Village Hall

Pooled supper. Visitors welcome £5

Sept 11th	Helen Poremba, Textile Artist, Demonstration. Competition: Hand-made Fabric Item
Oct 9th	David Jones, Coquetdale Archaeology Competition: Artefact
Nov 13th	Ewa Kochanoliska & Tomasz Krybus, Poland: Its Landscapes and Its Christmas Traditions Competition: Foreign Souvenir
Dec 11th	Christmas Dinner, venue tbc
2026	
January	No meeting
Feb 12th	Pie and Pea Supper, followed by Programme Planning. Subs Due
Mar 12th	Ben Howie, Morwick Dairy & Ice Cream Parlour. Competition: Sundae Dish
April 9th	Charlotte Boxall, Willow Work Competition: Basket
May 14th	A.G.M.

Contributions for raffle prizes will be gratefully received each month.

HARBOTTLE

NEW: HATHA YOGA CLASSES: Tuesday Evenings 7- 8.30pm in Harbottle Village Hall (also online). Contact info@judaliyoga.com or see www.judaliyoga.com for more info.



Iyengar Yoga in Harbottle Village Hall on Monday evenings from 6.00pm to 7.30pm.

This is a general Iyengar class suitable for all abilities including beginners. For more information call Margaret on 650281 or email margaret@ranken.co.uk

CANINE PARTNERS: Please continue to save your used postage stamps for the charity, Canine Partners, in order to help towards the cost of training even more puppies to develop into helping dogs for disabled and injured people. Karen has kindly agreed to keep the collection bag at The Star Inn, Harbottle. The charity is very grateful for all your hard work. It has helped so much.

<https://caninepartners.org.uk/get-involved/fundraising/recycle-used-postage-stamps/>

NEW: Harbottle Village Hall:

Harbottle Village Hall: a local amenity for the community of Harbottle, Alwinton, Sharperton & Holystone.

This community resource, with comfy chairs and newly installed Wi-Fi, can be booked for private and community events. It is a great space for parties, discos, auction of promises, coffee mornings or perhaps even a new venture? Please chat to Tracey Boldy for more information and to make a booking: stickypud@harbottle.net

The past generations have used it for fund raising Coffee Mornings, Jumble sales, Discos, Auction of Promises, Village Pantomimes, Ceilidhs, Private Parties, Art Groups, Sewing Groups and Music Evenings.

Weekly Classes

Monday:	Iyengar Yoga	6 - 7.30 pm
Tuesday:	Judali Hatha Yoga	7- 8.30 pm (new day/time)
Wednesday:	Ballroom & Latin Line Dance**	
	Beginner:	10 - 10.55 am
	Beginner Plus:	11 - 11.55 am
NEW: Thursday: Yoga for Children		
		4.30-5.30 pm
Friday:	Ballroom & Latin Dance: NEW Starters always welcome	
	Focus Dance or Beginner:	6 - 6.55 pm
	Beginner Plus	7 - 7.55 pm
	Salsa	8 - 8.55 pm
Sunday:	Café Church	3-6 pm (Fourth Sunday each month)

Harbottle Badminton & Short Tennis:

The equipment and venue are ready when you are.

NEW: **

Forever Yung Dance

1d · 🌟

We have a new 4 week session of our Beginner Ballroom & Latin Line Dancing starting next Wednesday.. 3rd September at Harbottle Village Hall.

Ballroom & Latin LINE Dancing is a low impact, yet highly aerobic form of exercise and, unless you like that sort of thing, it's definitely more fun than going to the gym!

Ballroom & Latin Line Dancing is a non partner form of Ballroom & Latin Dance, and includes all of the regular dances... Quickstep, Waltz, Paso Doble, Foxtrot, Viennese Waltz, Jive, Cha Cha, Tango, Mambo, Samba, Rumba, Hustle, Greek, and more!! It's great exercise and lots of fun!!



NEW: Cafe Church at Harbottle Village Hall

A Coquetdale Churches Together event.

ALL WELCOME!

We would love you to join us for an informal service with a cuppa & cake, songs, talk and creative activity. This is an opportunity for all generations to be together. These services will now be happening monthly on the fourth Sunday of each month (except December):

2025:

28th Sept 26th Oct 23rd Nov

2026:

25th Jan 22nd Feb 22nd Mar
 26th Apr 24th May 28th June
 26th July 23rd Aug

For more information or to get involved please contact either:

Catherine Iley:

catherine.iley@gmail.com

Angela Feather

[angela.feather@urc-](mailto:angela.feather@urc-northernsynod.org)

northernsynod.org

Make a Poppy for Remembrance: Janet Wood has placed a collection box with further details in Harbottle Village Hall. Please get in touch if you wish to join in or contact Vikki Ewen : 01669 622808.

NEW: 'Friends of Harbottle First School'

Our next meeting is on **11th September at 6 pm at The Star Inn, Harbottle**. All are welcome.

We aim to meet every month to discuss ideas, upcoming events, fundraising ideas etc. and would love to welcome new members from the local community to join us (please note you do not need to have a child at Harbottle First School to join).

If you have a little time to spare and would like to help in **any** way then please get in touch via our email:

FriendsofHarbottleFirstSchool@gmail.com

and we can add you to the 'Friends' contact list for notification of future meetings and times (these will be varied to try and cater to everyone).

Harbottle School Community Group: Supporting Our Local School

We welcome anyone from the school and local community to come along and help. No set times so it can be daytime or weekends, an hour or a morning whatever suits. Jobs could include weeding, bed clearing, tying back, tidying, painting etc.

So if you enjoy a bit of gardening in your spare time and would like to join us to look after our local school gardens, then please contact Margaret Ward for more information (01669 650317). We are always on the lookout for the next generation to work with us and take it forward, as we ain't getting any younger!

NEW: Children's Yoga by Amanda

Starting Thursday 11th September 2025.

Weekly Thursday Term-Time Classes in Harbottle Village Hall, 4.30-5.30 pm.

£5 a session.

Please wear comfortable clothing and bring a water bottle.

Please contact Amanda to book: 07437220608.





The 151st
HARBOTTLE SHOW
THE OAK TREE FIELD, HARBOTTLE
By kind permission of The Common Family
SATURDAY 6th SEPTEMBER 2025

from 12pm

Admission at Gate - Adults: £5 Children (Under 16): Free
Car boot - £10 per car (includes drivers admission)
On Field Car Parking - Free

HORTICULTURAL, INDUSTRIAL & CHILDREN'S CLASSES, CRAFT
DEMONSTRATIONS, CUMBERLAND WRESTLING, MUSIC TENT,
TERRIER RACING, ARCHERY, FAMILY FUN & MORE

AUCTION OF PRODUCE TO BE HELD IN THE EVENING
(8pm approx) AT THE STAR INN - HARBOTTLE

**PLEASE NOTE, LIMITED MOBILE SIGNAL ON THE SHOW FIELD,
CASH SALES ONLY**

NEW: 151st Harbottle Show on Saturday 6th September 2025....Next Week!

The Team are extremely busy finalising this year's show and look forward to seeing you all on The Oak Field, Harbottle on the first Saturday in September.



So much to choose from but here goes....the splendidly impressive **Sheep Show**, lots of "enter on the day" **horticultural, industrial and children's classes** which are **FREE to enter** but donations are always welcomed in the buckets available on the gate or main tent and then there is the crowd pulling **Music Tent** delivering toe tapping quality sounds all afternoon courtesy of local musicians. The raffle and tombola are always winners. And then the fun community gathering in The Star during the evening for the auction of donated produce, a drink, chat and live music. Exhaustion with a smile guaranteed!

Ringside seats will be available to watch the ever popular **Cumberland and Westmorland Wrestling** with all of the usual classes. There will be plenty going on to keep the whole family entertained including **racers for both children and adults, the dog show, terrier races, archery** and the **quoits competition**.

A variety of local crafts will be demonstrated and be on display in our **Trade & Craft Tent**, alongside trade stands from the local area. Why not join the **car boot sale** on the show field; £10 payable on the day and it will help you to have a bit of a de-clutter as well as enjoying the show from a prime location. And whilst you catch your breath between events and chats, please don't forget to visit our wonderful **traditional tea tent**; all brilliantly prepared each year by Sylvia, Jaycee and their team.

The **2025 Show Schedule** is now locally available listing all of the classes at this year's show. Please have a look through and think about which classes you fancy entering. There are lots to choose from and all help to make the show a wonderful, colourful community display.

All on one field on one magical September day in Harbottle. Just like Brigadoon! So not long to go but it gives you plenty of time to bake, create, get fit, tune up, clear out the cupboards AND GET SOME CASH! Because just like Brigadoon there isn't a mobile signal on the show field so **no card sales!**

Tombola donations: can be dropped off at The Star Inn, Harbottle or with Janet Wood (ASAP please, thank you).

Raffle donations: can be handed to any committee member or handed in to The Star Inn, Harbottle ASAP please. Thank you.

BIG CALL OUT.....WE WOULD APPRECIATE SOME ADDITIONAL HELP THIS YEAR. *For one reason or another the Show Team plus reserves are spread thinly this year and would welcome anyone willing to chip in with whatever time you can spare e.g. Thursday night set up on the show field from 6pm or an hour on the tombola or raffle on show day.* Putting on a village show requires a great **team of volunteers** from this community who year after year give up their time to do so many tasks requiring such different skill sets. We are always wishing to expand the team so if you are willing and able to help out in any capacity be it on the day (car parking, stints on raffle or tombola etc.), during Show week (setting up the show field – always on the lookout for the next generation of strong bodies, help inside of tents etc.) or at any point in the year (committee, help with bookings, assist with schedule booklet preparation etc.) then please get in touch via the "Contact Us" section on www.harbottleshows.com.

All help is very welcomed so why not pop along to the show field on Wednesday or Thursday evening 6pm or Friday morning to lend a hand? Otherwise we look forward to welcoming you to the Show Field next Saturday.

And in this year's Harbottle Show Music Tent..... we present:

The Rob Heron Trio

For over a decade Rob Heron and his musical chums have been gleefully tramping across genre boundaries of rockabilly, blues, country, swing and soul, and have toured widely across the UK and Europe under a number of guises.

Based in Newcastle we've brought Rob and a couple of his very talented pals to Harbottle for you to enjoy an energetic and lively performance full of good music and dry humour.

Prepare to enjoy yourself, tap your feet and sing along with these wonderfully entertaining and likeable musicians!!!!

The Lumaches

The Lumaches are a performing, writing and production duo based in Leeds but with local roots in Holystone (Mac Fielding and Cat O'Neill)!!!! Their sound is described as 'alt-folk-jazz'.

Over the years they've busked in Leeds, played at the Cluny in Newcastle and the Scala in London. Hear summery bossa nova rhythms meshed with soulful and conversational lyric delivery!!!

James Tait

James is a well known local musician and song writer, renowned for his melodious playing and relaxed renditions of Northumbrian music as well as popular modern songs. Sit back, chill and enjoy James' performance.

*We welcome walkers, cyclists, tourists, bikers, local residents
and their families, friends and dogs!*

Events Planned over the coming months:

Saturday 6th September, 12 noon:

*Harbottle Show Day, inc Auction of Produce
(8pm) plus live Music with Ten Bob Blind
(9pm). Late licence until 1am.
Last order food at 8pm.*

Saturday 20th September, 8pm:

*Cheviot Folk Night in The Courtyard Barn
Live Accordion Music Night*

Saturday 27th September, 8pm:

Saturday 4th October, 8pm:

Acoustic Music Night in the bar

Saturday 11th October, 12 noon:

Alwinton Show Day

Saturday 18th October, 7.30pm:

Cheviot Folk Night in The Courtyard Barn

Saturday 1st November, 8pm:

Acoustic Music Night in the bar

Saturday 15th November, 7.30pm:

Cheviot Folk Night in The Courtyard Barn

Saturday 22nd November, 8pm:

Live music night with Danielle Keyes

Saturday 29th November, 8pm:

Live music night with Vestlife

Saturday 6th December, 8pm:

Acoustic Music Night in the bar

Saturday 20th December, 7.30 pm:

Cheviot Folk Night in The Courtyard Barn

Look forward to welcoming you soon and thanking everyone for their ongoing support.

Karen



Newspapers, milk, eggs, cakes, store cupboard items always available....including chocolate fixes 😊



Breakfast in the Barn	
Breakfasts (served 8.30am to 10.30am)	
Full English 2 bacon, 2 sausages, mushrooms, 2 black pudding, tomato, baked beans, white or brown toast and either 2 poached, fried or scrambled eggs	£12.95
Full English (small) 1 rasher bacon, 1 sausage, mushrooms, 1 black pudding, tomato, baked beans, white or brown toast and either 1 poached, fried or scrambled egg	£8.50
Full English Vegetarian 3 vegetarian sausages, mushrooms, tomato, baked beans, white or brown toast and either 2 poached, fried or scrambled eggs	£10.95
Continental Breakfast selection of cold meats and cheese with a hard boiled egg and white or brown toasted bread	£11.95
Beans on Toast (white or brown)	£4.95
Eggs on Toast (white or brown) fried, poached or scrambled	£5.95
Pastries and Toast croissant, pain au chocolat, white or brown toast, butter and jam	£5.95
Breakfast Bap (served 8.30am to 12 noon)	
Bacon	£3.95
Bacon and Egg	£4.95
Sausage	£4.50
Sausage and Egg	£5.50
Bacon and Sausage	£5.95
Bacon, Sausage and Egg	£6.95
Bacon and Brie	£5.50
Egg	£3.50
Vegetarian Sausage	£3.50
Vegetarian Sausage and Egg	£4.50
English Breakfast Muffin (served 8.30am to 10.30am)	
Eggs Florentine spinach, poached eggs and hollandaise sauce	£6.50
Eggs Benedict roast ham, poached eggs and hollandaise sauce	£7.95
Eggs Royale smoked salmon, poached eggs and hollandaise sauce	£8.95
Eggs La Stella bacon, sausage, black pudding, poached eggs and hollandaise sauce	£8.95
Eggs Simply Poached eggs and hollandaise sauce	£5.95
Children (served 8.30am to 10.30am)	
Full English bacon, sausage, baked beans, white or brown toast with either a poached, fried or scrambled egg	£5.50
Full English Vegetarian vegetarian sausages, baked beans, white or brown toast with either a poached, fried or scrambled egg	£5.50
Beans on Toast (white or brown)	£3.50
Breakfast Sandwich (white or brown) bacon, sausage or egg with a slice of white or brown bread	£3.50
Eggs on Toast (white or brown) poached or scrambled	£3.50
Sides	
Yoghurt	£1.25
raspberry, strawberry, blueberry, rhubarb, natural	
Croissant or Pain au Chocolate	£1.50
Toast and Butter	£2.50
Portion of Jam, Marmalade or Nutella	60p
Breakfast Extras bacon, sausage, black pudding, egg, mushrooms, tomato, baked beans	£1

Please tell us about any allergies or special dietary requirements



Come rain or shine we have got you covered!



The Star Inn, Harbottle
Morpeth
Northumberland
NE65 7DG

Tel: 01669 650221 Email: info@thestarinnharbottle.co.uk
Follow us on Facebook - twitter - Instagram

Website: www.thestarinnharbottle.co.uk



NEW: Forever Yung Dance Classes in Harbottle Village Hall



We are always ready and keen to welcome new starters.....if you are tempted to try then please get in touch and we will help to get you moving in whichever class that suits you best.

Quotes from current local dancers:

"Good fun, made new friends and the perfect way to keep fit."

"We never thought ballroom dancing would be our cup of tea, but we joined when we moved here, just to get to know people. We've loved it ever since and I have even taken up Salsa classes!"

"There is no such thing as bad dancing, its all just joyful."

"Great fun with a very patient teacher, nice meeting new people including the opportunity for coffee at The Star after some good, gentle, relaxing exercise."

"Very friendly groups; great teacher. You won't regret it. One of the best things I have done; love it!"


"Just love it and it makes me smile. Like the social, health & fun aspects, including the social dances expertly curated by Lisa, as well the challenge of learning so many different styles of dance slowly over time. Ken has the patience of a saint, carefully explaining and re-explaining the steps to us."

ADULT


Ballroom, Latin, Salsa, Line

Dance Classes


Harbottle Village Hall



Ballroom & Latin
Beginner
Friday Evenings
6:00 - 6:55pm
Fun & Welcoming..
Learn Foxtrot,
Jive, Waltz
and Cha Cha



Salsa
Beginner
Friday Evenings
8:00 - 8:55pm
Fun & Welcoming
Dance Classes for
Beginners.
Immerse yourself in
the rhythms
of Latin America.




Ballroom & Latin
Modern
LINE DANCE
Beginner
Wednesday Mornings
10:00 - 10:55am
Beginner PLUS
Wednesday Mornings
11:00 - 11:55am
Non partner form of
Ballroom & Latin
Dancing.
Great exercise
and lots of fun.

NO Partner Required for any of our programs!

£45 per 8 week program

£25 per 4 week program



Forever Yung
DANCE

CONTACT INFO:
Tel: 07818 726941
Email: yungdance@icloud.com
Website: www.foreveryungdance.co.uk

Community Social Dances at Harbottle Village Hall

Saturday 25th October:
Saturday 13th December:

"Spooktacular Halloween Dance" with half hour Tango workshop*
Christmas Dance with half hour Quickstep workshop*

6:15 – 9.15pm/*9.45pm **Please purchase tickets in advance**

*Door prize

**"pooled food" for mid-evening buffet

*Everyone is welcome

*No dance experience/partner req'd

If you wish to know more or join any of the classes then please contact Ken & Lisa:

www.foreveryungdance.co.uk

Email: yungdance@icloud.com

Please check our Facebook page for updates: <https://www.facebook.com/foreveryungdance/>

News from the Valley

NEW: Messages from Rothbury GP Practice

The Rothbury Practice
1 August at 20:20

Please remember A&E is for genuine life-threatening emergencies only!

If you do go to A&E and your medical need is not life-threatening you will experience significant delays.

Getting the right care, in the right place, can be quicker and closer to home...

Think:

- pharmacy first
- GP
- NHS111 online - or by phone - 24 hours a day, 7 days a week - they can help assess and direct you to the right place to go

#NHS #HereToHelp

The Rothbury Practice
2 days ago

Urgent treatment centres are here to help you if you have an injury or illness that requires URGENT attention but is NOT life-threatening.

They can diagnose and deal with many of the most common issues people go to A&E for including:

- broken bones and sprains
- injuries, cuts and bruises
- wound dressing
- stomach pain
- coughs, colds and breathing problems
- vomiting and diarrhoea
- skin infections and rashes
- fever in children and adults

They're open at least 12 hours a day every day.

Not sure which health service is best for your needs?

Use NHS111 online 24/7 to get assessed and directed to the right place for you.

www.nhs.uk

#NHS #HereToHelp

NPC Rothbury
9 June at 19:31

Did you know 🤔

More than 80% of young people worry about being embarrassed if they said they were lonely.

Loneliness. It's a part of life. Let's talk about it this Loneliness Awareness Week

Find out more 📖

<https://orlo.uk/DVSSJ>

#EveryMindMatters
#LonelinessAwarenessWeek

NPC Rothbury
1d

If you're eligible for the flu vaccine, it's important that you get vaccinated to protect yourself and your loved ones from becoming unwell this winter.

You'll be able to book an appointment once you have received a text message from us with a booking link. You'll then be able to choose a date and time to attend one of our flu clinics.

By getting your flu vaccine with your NPC GP practice, you'll be in a familiar environment with staff who know your healthcare history and who can support you to stay safe this winter.

Rothbury Community Hospital, our local hospital: If you, or a loved one, are interested in a residential place please either email rothbury@pfcare.co.uk or telephone People First Care at their Wooler site on 01668 281 662; ask for Amanda Cowell. Here is a link to a virtual tour of the facility, you can see how lovely and homely it is: <https://youtu.be/Aw5UkCMj9Yo> Or find Rothbury Cottage Care on You Tube.

The Rothbury Tree Trail

A new tree has been added to this popular, circular, walk. The Fastigate Yew in All Saints Church Yard is waiting to tell you her stories. This includes information about the church itself, told by Jeff Reynolds. Also stunning music by local group *Tillering Tree*. Free! Download via the Rothbury Tree website: ClimateAndNature.co.uk | RothburyTrees.co.uk



The Coquet Valley Archers Club

Under 18's must be accompanied by a parent or guardian. If you wish to know more why not join up and come along to our twice monthly Sunday sessions. For more information email: info@coquetvalleyarchers.org



NEW: The Coquetdale Music Trust – Thropton at 7.30pm

Sunday 31st August: Claude Bourbon (progressive blues)
Tickets are on sale from Tully's £15.00 or contact lesleyhallcoquetdalemusictrust@gmail.com

Friday 3rd October: Methera (string quartet)

Sunday 26th October: Hannah Sanders & Ben Savage

Saturday 22nd November: Tom McConville/Michael Biggins

Tickets on sale at Tully's, or see website www.coquetdalemusictrust.com

Or contact: lesleyhallcoquetdalemusictrust@gmail.com

All Concerts start at 7.30pm and feel free to bring your own refreshments

Retired? Or semi-retired? Thought about joining U3A?



Explore new hobbies & stay active with Coquetdale u3a! Coquetdale u3a offers those who aren't in full-time work a wide variety of interest groups to develop existing hobbies and explore new ones.

Those with an interest in keeping fit might like to try Table Tennis, the Cycling Group or one of our walking groups. If you're more interested in expanding your brain rather than muscles, you could join the monthly Discussion Group debate, say Holá! to the Spanish Conversation group or take up Creative Writing. If you simply want to have fun, there's Ceilidh Dancing in Thropton's Memorial Hall or the Board Games group who meet in the Queens Head.

Joining your local u3a is a great way to find and develop new interests and make friends in a relaxed environment. We have monthly get-togethers, quiz nights and trips and visits. The interest groups that are the lifeblood of an u3a! At Coquetdale u3a we offer a broad range of groups, just look at the list below!

Art Appreciation	Book Groups	Ceilidh Dancing	Creative Writing
Cycling	Discussion Group	Board games	Food and Drink
Gardening	Music Appreciation	Nordic Walking	Poetry
Railways and Modelling	Spanish Conversation	Table Tennis	Vegetarian Food
Walking Group	Natural History	Knit & Stitch	

For information on these groups and many, many more, visit our website: www.coquetdale.u3asite.uk/groups or drop us a line through our Facebook page (simply search for **Coquetdale u3a**) or drop into one of our monthly talks held on 3rd Monday of each month in the Jubilee Hall at 10 for 10.30am. Here's our upcoming programme:

Doors open half an hour before the stated start time for refreshments, so please arrive early if you'd like to join us for a cuppa and a chat. Non-members will be very welcome to our talks for a small suggested donation of £2.

If you would like to find out about membership, please email us on coquetdale.u3a.comms@gmail.com
Susie, Coquetdale u3a Groups Coordinator



COQUETDALE LEAGUE OF FRIENDS

Reg. Charity No. 508289

About us: The Coquetdale League of Friends, a local registered charity, has been run for the last 46 years by volunteers. Our aim is to support health providers and those who rely on their services in the Coquet Valley. We do this by raising funds and managing donations so that we can help our health care providers give their patients the best health services in this very rural area.

Join: We are always very happy to welcome new Friends. If you would like to get involved please contact the Secretary at cathyjacob@hotmail.com. We are particularly in need of anyone with social media or web building skills.

Donate: We are only able to continue our work supporting the nurses and doctors working in the Coquet Valley and their patients because of the money generously donated by the public. If you would like to donate our bank account details are as follows:

Lloyd's Bank, Sort code: 30-99-50, Account number: 20679463

Next Coquetdale Repair Cafés:

Saturday 13th September from 10am-2pm in the Jubilee Hall, Rothbury

Saturday 22nd November

Broken toaster? Torn clothes? Broken zips? Garden items need sharpening?
Damaged picture frames? Dodgy chair? Loose garden fork handle? Don't bin it! Fix it!

Please visit us on Facebook and Twitter (@CoquetRepair) or <https://www.coquetrepair.co.uk/> for the latest information on how you can have your broken items repaired, learn repairing skills & have a cuppa, cake & a chat. **New Volunteers always welcomed**, especially if you have electrical/woodwork expertise or have a specialist area like mending clocks for example. If interested please email the group.

COQUETDALE YOUNG FARMERS

You don't have to be a farmer to be part of Young Farmers as it is a rural, youth based organisation for anyone interested in rural and countryside activities. Coquetdale Young Farmers Club warmly invites anyone interested in becoming a member to join them. The club meets usually once a week on a Monday night and welcomes anyone between the ages of 14 - 26. It is a great way to meet friends and get involved in competitions and other activities.

Interested? Then please contact Lauren Clark on 07788724835 for more information.

Over the Bridges: The Church & Community Magazine for Upper Coquetdale is available online at: www.overthebridges.org

.....

Cost of Living Sources of Information

Alnwick District Food Bank:

NO CHILD SHOULD GO HUNGRY !

AND YET 1 in 4 CHILDREN ARE NOW LIVING WITHOUT ENOUGH FOOD

We currently need tinned fish, meat, baking goods, pasta sauce or curry sauce, biscuits and tinned vegetables.

We currently have sufficient pasta, baked beans and chocolate; thank you.

We always appreciate donations of stout carrier bags and cloth bags.

Contact points

- Call us on 07957 298057 and leave a message
- email us at coquetdale.hub@gmail.com

DROP OFF POINTS: Rothbury Co-op, Thropton Spar, The Star Inn in Harbottle, The Running Fox and St Mary's Longframlington.

"We want to thank you all plus The WI, The Coquetdale Singers and the lady golfers who have always so generously supported the Foodbank."

Your kindness makes a big difference. THANK YOU!

The Coquetdale Foodbank

The Citizens Advice Service for free, confidential information and advice on benefits, debt, housing and employment problems. You can obtain help from us in a number of ways:

- By telephoning Northumberland Advice line on 0808 278 7944
- For energy advice 01670 339749.
- Help claiming universal credit 0800 144 8444. Open Monday to Friday 9am to 4.30pm. Closed Bank Holidays.
- By calling into our drop-in sessions: 10-12 on Tuesday mornings.

Debt advice is also available:

- **Monday to Friday on 01670 339960 or text DEBT to 81400**
- By going on-line at www.citizensadvice.org.uk/northumberland



Warm Hubs: created by CAN as places within the local community where people can be assured of finding a safe, warm and friendly environment in which to enjoy refreshments, social activity, information and advice and the company of other people'. The local Warm Hubs currently available are in The Star Inn in Harbottle, Hepple, Rothbury Jubilee Hall, Longframlington and Thropton Luncheon Club.

Did you know.....there are cheaper social tariffs out there for broadband?

<https://www.gov.uk/government/news/cheaper-broadband-for-struggling-families-14-august-2022>

Travelling to the EU? Check your EHIC expiry date. If expired, apply for a free GHIC via the NHS site to provide access to state run hospitals and GPs in the EU for the same price as a local. Travel insurance is still advisable.

<https://www.nhs.uk/using-the-nhs/healthcare-abroad/apply-for-a-free-uk-global-health-insurance-card-ghic/>

Energy Advice in Rural Northumberland:

<https://energyadvicenorthumberland.org.uk/our-work/>

Pension Credit:

To calculate if you are eligible use:

<https://www.gov.uk/pension-credit-calculator>

For more information:

<https://www.gov.uk/pension-credit>

Don't miss out if you are eligible. If in doubt then check it out as it will help with paying for fuel over winter.

It is always worth checking in with **Moneysaving expert Martin Lewis** to read about his latest advice on energy bills, rising mortgages and the cost of living crisis. If you need a guide on possible sources of financial help for energy bills:

Travelling to Europe? Don't get caught out by the 10 year rule

UK travellers used to be able to carry up to nine months left on an old passport over to a new one.

This meant that a passport could be valid for more than 10 years.

This did not matter when the UK was a member of the European Union (EU).

But the rules changed after Brexit, and the majority of EU countries no longer accept British passports which were issued more than 10 years before the date of travel.

This is known as the "10-year rule".

To enter those countries now, your UK passport must:

- have been issued less than 10 years before the date you enter the EU country (i.e. the "date of issue")
- be valid for at least three months after the day you plan to leave (i.e. the "date of expiry")

If your passport does not meet these requirements, you will be refused entry.



The Rothbury Practice

31 July at 13:25 · 🌐

From September, even more working parents will have access to childcare for their children.

If you are an eligible working parent with a child who is or turns at least 9 months old by 31 August, you can now apply for 15 hours childcare to start in September.

Stay up to date with the upcoming expansion to childcare support with our regular newsletter for parents 📧
www.childcarechoices.gov.uk



HM Government

Help for Households

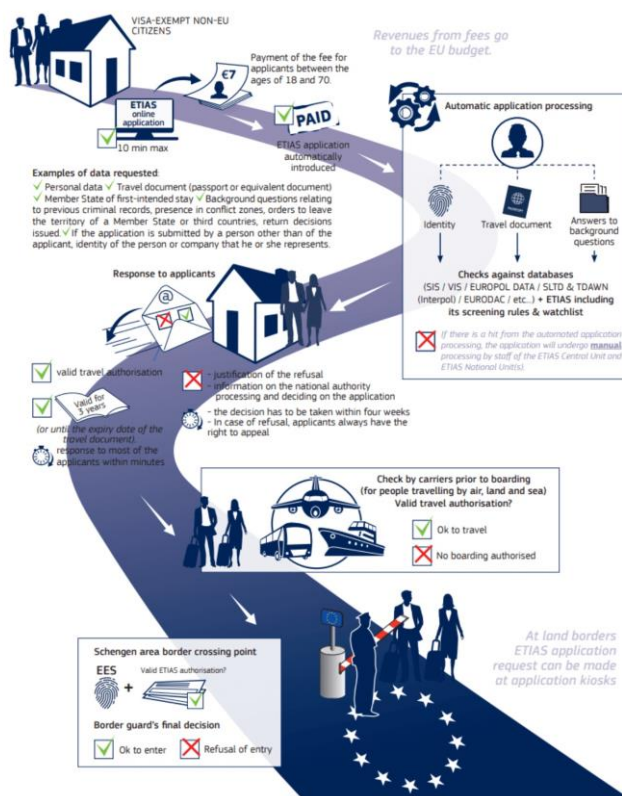
Get help that
fits your family.

Find out more at
childcarechoices.gov.uk

Childcare
Choices

EES / ETIAS and Travelling to EU:

This much delayed biometric data scheme is delayed again with EES expected to become operational in October 2025 and ETIAS expected to follow in the last quarter of 2026.



Landlines are changing

Storm Eowyn 2025 set a challenge for the new mobile mast in Upper Coquetdale. So when people needed mobile reception in a power cut where was the reliable alternative to the old trusty copper wires of a landline? Who else resorted to their old non-digital phones on that Friday when the power went off along with the mobile signal?

BT is the first telecoms company to axe the timetable that would have seen the nation's old landlines replaced with digital phone lines by December 2025. The timeline for completing the transition has been pushed back to the **end of January 2027...but companies are working on this switchover NOW.**

In power cuts: the new digital phone services will not work. If you do not have a mobile phone or reception then your provider should give you a battery back up so that you are not cut off if there is a power cut. Remember to check how long the offered battery pack lasts for and discuss if it is sufficient to cover the length of power cuts that we usually endure.

If you are worried about being switched over based on your lack of mobile phone or internet, or our poor history of power cuts, or rely on personal fall alarms or burglar alarms, or have medical worries that require access to 999 etcthen get in touch with your provider NOW and check if your devices will work with this new enforced digital connection.

This is especially important for those who rely on Telecare alarms. Providers need to know this information to ensure customers continue receiving Telecare services without disruption during the switchover.

For more information: www.digitalphonesswitchover.com

digitalphonesswitchover.com

BT Virgin Media Supported by UK Government

Learn more

1 Q

bt_uk The digital switchover could stop telecare alarms working. Call the landline provider now for support.

Do you or someone you know use a telecare alarm?

Landline phones are switching to digital, which could stop telecare alarms working. Landline providers are here to help.

If you or someone you know uses a telecare alarm, you must call the landline provider. They will help make sure alarms keep working through the switchover.

Find out more

Supported by UK Government



The Digital Phone Switchover

Out-reach Post Office Services
(aka Find Bessie)



Day	Location	Time
Monday	Hepple Post Office	9.00 am - 10.00 am
	Netherton Village Hall	10.30 am - 12.30 pm
	Holystone Church	1 pm - 2.30pm
	Hepple Post Office	3.00 pm - 5.30 pm
Tuesday	Thropton Village Hall	10.00 am - 12.00 noon
	Hepple Post Office	2.00 pm - 5.30 pm
Wednesday	CLOSED	
Thursday	Rochester Village Hall	9.15 am - 11.15 am
	Otterburn Village Hall	12.00 noon - 2.00 pm
	Hepple Post Office	2.30 pm - 5.30 pm
Friday	Hepple Post Office	9.00 am - 1.00 pm
	Hepple Post Office	2.00 pm - 5.30 pm
Saturday	Hepple Post Office	9.00 am - 12.30 pm

Some Ideas for the Coming Weeks



NEW: Rothbury Maker's Market

Saturday 6th September

Saturday 4th October

Saturday 1st November

Saturday 6th December

10am – 4pm

Jubilee Hall, Rothbury

With teas, cakes and bakes

A monthly market on the first Saturday of each month from April to December showcasing the talent of local Northumbrian Artisans.

Cragend Farm for Day Visits, B&B & Self Catering Accommodation. All visits must be booked in advance with the new season running until October. We also welcome photographic groups plus camping is available in the woods. We look forward to welcoming you.

Cragside's little neighbour with a big story to tell: Since being featured on Matt Baker's 'Travels with Mum & Dad' Series 3 (watch again on Demand More 4) a book has been written about the findings at the farm called: Transformation: 'Lord Armstrong's Cragend Farm' and is available to buy from Tully's and Soulsby's in Rothbury.

Lou Renwick, Cragend Farm

www.cragendfarm.co.uk 01669-621533 lourenwick@cragendfarm.co.uk

Instagram, twitter and Facebook @cragendfarm



NEW: Northumberland National Park

There are always plenty of activities and sites to visit across the whole of the Northumberland National Park, but here are a few of the local ones planned for the coming months that require pre-booking.

For more information please check the website:

<https://www.northumberlandnationalpark.org.uk/whats-on/>

Introduction to Navigation

Our Introduction to Navigation course is your key to getting started in countryside and moorland walking.

Event details: 13/09/2025 at 9:30 am Alnham Church

Biddlestone Winter Walk

A strenuous but breath-taking walk, which starts amongst historic buildings and then climbs up to remote fells where we take in the majestic scenery (6 miles/4 hours).

Event details: 26/10/25 at 10.30 am Biddlestone Chapel NE65 7DT

Humbleton and Harehope Circuit

Guided walk steeped in history with exceptional views as we follow St Cuthbert's Way to the site of the Battle of Humbleton Hill (5 hours/8 miles).

Event details: 09/11/25 at 10.30 am Wooler Common Car Park NE71 6RL

Hareshaw Common and the Pennine Way

Guided walk along the Pennine Way for superb views from an area north of Bellingham (3.5hrs/5.5 miles)

Event details: 23/11/25 at 10.30 am Hareshaw Linn Car Park NE48 2BW

Rothbury and Armstrong Terrace

Walk along the Coquet and up to the Armstrong Terraces above Rothbury, with great views of Simonside Ridge (3.5hrs/6 miles).

Event details: 30/11/25 at 10.30 am Rothbury Riverside Car Park NE65 7RW

Carey Burn and Broadstruther

A circular walk from Wooler Common with great views down the Harthope Valley via the ominously named "Hell Path" (8 miles/5 hours).

Event details: 07/12/25 at 10.30 am Wooler Common Car Park NE71 6RL

A Walk in their shoes: Drake Stone and Harbottle Castle

Hear the stories and myths connected with the Drake Stone and the castle that dominates the area on Boxing Day (3hrs/5 miles).

Event details: 26/12/25 at 11 am Harbottle Forestry Commission Car Park NE65 7BQ

New: UK to test National Emergency Alert System on Sunday 7th September

The government alert is to take place on Sunday 7th September and is designed to warn of danger to life nearby, including severe weather threats, and putting your phone to silent will not mute it. It will allow for the sending of vital information and advice.

Mobile phones will vibrate and make a siren noise for about 10 seconds, as well as displaying a test message. However if your phone is turned off, connected only to 2g or 3g networks then you won't receive an alert.

<https://www.theguardian.com/society/2025/jul/08/uk-test-emergency-alert-september>

New:



Coquetdale Wildlife Group

A local community wildlife group affiliated to Northumberland Wildlife Trust

Please come along and join the Coquetdale Wildlife Group
for our current programme of interactive wildlife and nature talks.

For our Autumn / Winter 2025 programme we have the following talks scheduled:

Monday 1st September

“The wildlife on Coquet Island”

by Rebekah Goodwill

Monday 6th October

“Return of the Otter : Tracking Otters & Recovery in the North East England”

by Vivien Kent

Monday 3rd November

“Wildlife Sounds of Northumberland and the Borders”

by Geoff Sample

Monday 1st December

“Natural History in Morocco’s High Atlas Mountains”

by Phil Hanmer

**@ 7:30pm, Jubilee Hall, Rothbury
(Teas & coffees available from 7pm)**

Please come along and join us. Visitors are always welcome (£4 per talk for non-members)
For further details please contact Lorna (lornaholystone@gmail.com)

POT HOLES DON'T REPORT THEMSELVES!

Have a go after every journey as it is very easy to do. www.northumberland.gov.uk, scroll down and click on Report a Pothole. Alternatively phone 0345 600 6400. How easy is that? Go on, have a go at reporting at least two after each journey. There were far too many reports of tyre and car damage occurring locally in the past year. And don't forget that you can make a claim for the damage.....look for evidence on the above website in case your demon pothole has previously been reported but not repaired. And don't give up on the first refusal letter.

DO YOU WANT TO LEARN A NEW SKILL?
DO YOU ENJOY WOODWORKING?
DO YOU HAVE PRACTICAL SKILL YOU CAN SHARE?

If so we can help each other at

**"THE BARN"
COMMUNITY WORKSHOP**

Ryehill Farmhouse NE65 7NG
(just North of Rothbury)
my three word ### candy campfires propelled



For more info:

Call Paul on 07792 728 262 or search for:

www.rcvbarn.info



"The Barn" Sessions

"The Barn" Community Workshop is now open
Tuesdays 2pm to 4.30pm
Mens Shed-Wednesdays 10am to 12.30pm
Wednesdays 7pm to 9.30pm

New from 17th January 2023
Mens Shed-Tuesdays 10am to 12.30pm

For more details e-mail: rcvbarn@gmail.com

COQUETDALE TRANSPORT

Route 16a and 16b Timetable			
NEW TIMETABLE FROM 1 ST NOVEMBER 2024			
	Departure times		
Tuesday and Saturday Service	16a	16a	16a
X14 (From Newcastle) arrives Rothbury*	07:23	11:43	14:38
471 (From Alnwick) arrives Rothbury**	N/A	13:05	14:35
Rothbury, Silvertown Lane corner with Garlegh Road	08:10	12:00	14:40
Rothbury, Rothbury Community Hospital	08:13	12:03	14:43
Rothbury, Opposite Queens Head	08:15	12:05	14:45
Thropton, Cross Keys	08:21	12:11	14:51
Snitter, The Cottage	08:25	12:15	14:55
Netherton, Old Coach House	08:35	12:25	15:05
Alwinton, Phone Box	08:49	12:39	15:19
Harbottle, First School	08:55	12:45	15:25
Holystone, Mill	09:02	12:52	15:32
Hepple, Post Office	09:15	13:05	15:45
Thropton, Three Wheat Heads	09:24	13:14	15:54
Rothbury, Queens Head	09:30	13:20	16:00
Rothbury, Rothbury Community Hospital	09:32	13:22	16:02
Rothbury, Garlegh Road before Silvertown Lane	09:35	13:25	16:05
This Service will not operate on Christmas Day, Boxing Day or New Years Day			
X14 (to Newcastle) arrives Rothbury*	10:00	14:00	17:05
471 (to Alnwick) arrives Rothbury**	09:33	13:33	N/A
Thursday Service			
	16b	16b	
X14 (From Newcastle) arrives Rothbury*	07:23	14:38	
471 (From Alnwick) arrives Rothbury**	N/A	14:35	
Rothbury, Silvertown Lane corner with Garlegh Road	08:10	14:55	
Rothbury, Rothbury Community Hospital	08:13	14:58	
Rothbury, Opposite Queens Head	08:15	15:00	
Thropton, Cross Keys	08:21	15:06	
Snitter, The Cottage	08:25	15:10	
Netherton, Old Coach House	08:35	15:20	
Alwinton, Phone Box	08:49	15:34	
Harbottle, First School	08:55	15:40	
Holystone, Mill	09:02	15:47	
Hepple, Post Office	09:15	16:00	
Thropton, Three Wheat Heads	09:24	16:09	
Rothbury, Queens Head	09:30	16:15	
Rothbury, Rothbury Community Hospital	09:32	16:17	
Rothbury, Garlegh Road before Silvertown Lane	09:35	16:20	
This Service will not operate on Christmas Day, Boxing Day or New Years Day			
X14 (to Newcastle) arrives Rothbury*	10:00	17:05	
471 (to Alnwick) arrives Rothbury**	09:33	N/A	

Rothbury Shopper's Route

It is essential to book your place via Lesley to avoid disappointment. This **FRIDAY** only service is aimed at the elderly or mobility- impaired, providing door to door service and arrives at Rothbury at approximately 9.45am and leaves around 11am.

Upper Coquetdale Community Healthcare Transport

Visiting Rothbury Hospital or a local surgery? Having trouble getting there? Need a lift?

Upper Coquetdale Community Transport offers a friendly and cost effective Healthcare transport service to help those with no transport to get to their **GP appointments**:

£2 for journeys under 5 miles **£5** for journeys 5-15 miles
£10 if the journey is above 15 miles

We also go to various **regional hospitals**:

Alnwick **£15** Wansbeck/Morpeth **£20**
North Tyneside/RVI/Cramlington/Freeman/Hexham **£25**

Opticians/Dentists/Podiatry/physio and other essential appointments work alongside pricing for regional hospitals according to their locations (unless at Rothbury hospital).

DRIVERS NEEDED: UCCT are looking for volunteer drivers for both the car and the minibus services. If you feel that you could help then please contact Lesley in order to help keep these much valued services on the road.

To book seats or make an enquiry please contact Lesley Leeson, Transport Manager: 01669 622264

Email: UCCT3@hotmail.com

Web page: www.ucct-transport.co.uk

Also on Facebook!

Lesley's working hours are Mon-Fri 12-3pm, with an answer phone for other times of the day which is checked regularly for emergencies.

Coquetdale Creatives Website:

<https://coquetdalecreatives.art/>

Welcome! This website is the place to discover some of the talented, brilliant, and skilled artists, craftspeople, musicians, writers, photographers, designers – all types of creatives, who live and/or work in Coquetdale. There are many people who I have already interviewed, and you can find out about them in the Creative Folk, with many more interviews to come.

We also host regular poetry, writing, and music events, in Rothbury. These events feature published writers, and musicians, who have the main slots, but there is also space for audience members to take part. Occasionally we put on writing retreats and other events.

If you are a creative, living or working in Coquetdale, and you would like to appear on this website, please get in touch with me, Katie:

coquetdale.creatives@gmail.com

Rothbury CAN

Rothbury CAN has a website, with an events page on it: www.rothburycan.org

FINAL REMINDER: ROTHBURY EDUCATIONAL TRUST

The Trustees of the above Trust have a yearly amount available to provide a certain number of bursaries. Grants will be considered for:

- Students entering the first year of a recognised University degree course
- Students commencing an accredited apprenticeship including those involving courses at Colleges of Further Education
- Students must be under 25 years of age on **1st September 2025**
- Students will be granted one payment only

Potential beneficiaries must be permanently resident within the Parishes of Cartington, Hepple, Hesleyhurst, Rothbury, Snitter, Thropton, Alwinton, Harbottle and Tosson and the parts of the Parishes of Brinkburn, Hollinghill and Netherton that lie within the Ancient Parish of Rothbury.


There will be a limited number of payments and applicants will be required to complete a short form outlining why they feel they should be considered for the bursary.

Forms will be available from their Clerk, James Tait – email – taitj2010@hotmail.co.uk.

Only applications by email will be acknowledged and applicants must stipulate a 'start date' for their course.

Deadline for submission of forms is 1st September 2025


Please note that students will not be notified until mid-October as to whether their application has been successful or not.



Please note this annual opportunity for local young people to apply for a grant (yes an actual grant, not a loan that you have to pay back with exorbitant interest during your working lifetime; they still exist!).

Simply contact James for the application form and return it to him by **1st September**.

Don't miss out on the chance of help to cover some vital costs.



R & DM EDMONDSON LTD

t/a NEWTOWN ENGINEERING CO.

**AGRICULTURAL - HORTICULTURAL - PLANT ENGINEERING
FABRICATION & COUNTRY STORE**

Garleigh Road, Rothbury, Morpeth, Northumberland, NE65 7RG



*We have now updated our website,
you can find it here:-*

www.newtownengineering.co.uk

You can also now find us on Facebook:-



Newtown Engineering Co

(please like and follow our page)

*If you have any queries or are interested
in any products, please contact us
by telephone:-*

 **01669 620755**

 *or by email:-*

enqs@newtownengineering.com

or

stores@newtownengineering.com

September 2025

PARISH OF UPPER COQUETDALE

COMMUNITY NEWSLETTER

September 2025



NEW: The Happenings

A perfect summer holiday, although the farmers are crying out for some rain! However it has brought endless visitors to the valley and hopefully very good business for the hospitality venues.

Sadly still no good news on the Rector front but we did have a very nice visit from The Rev. Canon Thomas Woodhouse who is Chaplain to the King's Chapel of the Savoy within the Duchy of Lancaster and is involved with the appointment of a Rector. We hope he had a thoroughly good weekend meeting lots of parishioners and was taken around the parish whilst visiting all of the churches in it, and completed the visit by taking the Sunday service at Rothbury along with Rev. Storey.

We have "Churches Together" on Sunday 31st August at Alwinton and hopefully a full congregation with a merry coffee session following!

We wish all the students well who are moving up to Middle or High School, or university and any new children starting at our local Harbottle First School.

Julia

NEW: 200 Club Winners for September 2025



£20: Andrea Routledge
£15: John Christopher
£10: Isobel Blakey

The Parish website has moved: to the Church of England site called **A Church Near You** - and it is important to include the "A": <https://www.achurchnearyou.com/> Simply type in the name of your church e.g. Alnham or the postcode and the site will take you there. Eventually we will probably add a Parish site but at the moment all the information is to be found at each church's page. Please remember it is a growing site and it will take a while to add everything and to make sure we are making the most use of the site.

Alison Ball

The latest copy of The UCRG Newsletter can always be located on this new website [under any of the local churches](https://www.achurchnearyou.com/church/8034/news/notice-sheet/grid/) e.g. Rothbury All Saints/ Notice Sheets section at:

<https://www.achurchnearyou.com/church/8034/news/notice-sheet/grid/>

Thank you to Alison for updating this each month and helping to share news around Upper Coquetdale.



NEW: Cafe Church at Harbottle Village Hall

A Coquetdale Churches Together event.

ALL WELCOME!

We would love you to join us for an informal service with a cuppa & cake, songs, talk and creative activity. This is an opportunity for all generations to be together.

These services will now be happening monthly on the fourth Sunday of each month (except December), 3-6pm:

2025:

28th Sept 26th Oct 23rd Nov

2026:

25th Jan 22nd Feb 22nd Mar 26th Apr 24th May
28th June 26th July 23rd Aug

For more information or to get involved please contact either:

Catherine Iley:
catherine.iley@gmail.com

Angela Feather
angela.feather@urc-northernsynod.org

New: And finally from all at the UCRG:

Thank you for reading this far and....

We wish all the very best to all of our local youngsters who are moving on to new schools, places of work or further study (and don't forget to apply for that Rothbury Educational Trust grant!).

Enjoy the local shows and perhaps volunteer to help in some way as it is always very welcome.

Hoping the month ahead is kind to you all, as we all sometimes just need months like that.

Take care

We are still trying to widen the Newsletter coverage, as well as our contact database. We don't have a complete set of contacts for all households in the area. PLEASE CAN YOU HELP? We are grateful to the many that we know of who already print and share copies with their neighbours, especially for those living "off the net." Also, if you have new or old neighbours ask them if they wish to join the blind copied distribution list by asking them to email me, Tracey, on stickypud@harbottle.net and I will add them to my list. Susan also has a distribution list and posts the latest copy on some local social media outlets. It isn't perfect but at least we keep trying to improve it. Thank you.

The UCRG has been established over 20 years as a registered charity. We promote the benefit of the inhabitants of the Upper Coquetdale area, consisting of the parishes of Netherton & Biddlestone, Harbottle, Hepple & Alwinton. The charity provides facilities in the interest of social welfare for recreation and other leisure time occupations. Throughout the pandemic we were able to continue with our community newsletter in electronic form enabling isolated communities to keep in touch, and renewed batteries and consumables for the Alwinton & Netherton defibrillators in 2021.

In 2022 we funded the provision of a defibrillator in Harbottle village at a cost of £1510 plus the cost of several first aid/defibrillator training courses open to anyone in the local parishes. In 2023 we assisted with the training of members of the local Archery Club and again run a free First Aid Course for 7 locals. In 2024 we have covered the cost of consumables in some local defibrillators, contributed to the mat fundraising efforts of Rothbury Wrestling Academy, assisted in the repair of the trailer belonging to the Coquet Valley Archers and made a donation to Coquetdale Squirrel Group to help them continue their important work.

If you know of a group that may benefit from some funding and they meet the above criteria, then please contact us via jsirogerson@btinternet.com

If you would like to advertise your business in return for a small donation and reach many local households each month, then please contact Susan Rogerson: jsirogerson@btinternet.com All funds raised, plus extra donations and money provided via fund raising events, help The Upper Coquet Resource Group (UCRG) to keep this voluntary community group going.



EM ELSDON MEMORIALS
MJ ROBERTS AND SON
MEMORIAL, VASES AND ENGRAVING SERVICES

ALL ENQUIRIES TO:
ANGI ROBERTS
TELEPHONE NUMBER: 01669 650367
EMAIL: ELSDONMEMORIALS@GMAIL.COM

HINDMARSH EQUESTRIAN: Freelance groom covering Northumberland/Scottish Borders. Available for: Coaching/Teaching * Riding- schooling, hacking, jumping, competition * Lunging * All general yard duties: Bringing in/turning out * Competition/ hunt turnout * Plaiting * Trimming * Competition grooming * Pony Club grooming * Holiday cover * Tack cleaning * Holding for vet/ farrier etc. Fully Insured * First aid certificate * Full Pony Club B test * certified freelancer with British Grooms Association * Quad bike ticket



Please contact me to discuss your requirements: Anna Hindmarsh.

Call/text: 07469249158 * Email: hindmarshequestrian@hotmail.com * PM on Facebook.

My "local" heroes; Pass it on:

Heads2toe: soft tissue and sports/remedial massage therapist Stephen Heads, based in Rothbury but can visit your home. 07921 568965 or <https://www.heads2toe.co.uk/>

Rothbury based Kevin T Coe for fixing plumbing leaks! Friends have been saved recently by Kevin appearing quickly to work his magic. When in need: 07970 539574.

Twin Trees
Tree & gardening services
0782588462

- Tree removal
- Crown reductions
- Crown lifting
- Tree pruning & thinning
- Stump grinding
- Pollarding
- Hedge trimming
- Hedge reduction

Please call or email for a free quote
0782588462
Twin_trees@yahoo.com

Wag & Co: We are the only visiting dogs charity befriending older dog lovers in their own homes as well as in care or in hospitals. For further details either to volunteer with your dog or ask us to visit, then please check our web site: www.wagandcompany.co.uk

Volunteer with your dog
...and help end loneliness in older dog lovers.

We're a community of dog owners sharing our dogs with older dog lovers across the North East.

There are thousands of lonely pensioners who can no longer look after a dog of their own and miss their best friend.

Just a couple of hours a week for a chat and a nuzzle with your special dog makes all the difference to someone else's life and probably gives too.

Apply today, we'll make it safe and easy to volunteer.

Apply online wagandcompany.co.uk

THE ROSE & THISTLE
ALWINTON

FOOD & ACCOMMODATION IN NORTHUMBERLAND

BAR & RESTAURANT
Now fully refurbished • The Rose & Thistle Inn is a traditional country inn serving real ale, lunches, evening and Sunday meals in the bar and in our stunning beer garden.

BED & BREAKFAST
Five rooms at The Rose & Thistle Inn provide quiet, comfortable and spacious Bed and breakfast accommodation in a beautiful setting.

RED LION HOUSE
A stunning self catering property set over three floors that can very comfortably accommodate up to 11 people.

THE ROSE & THISTLE
Alwinton, Northumberland NE65 7BQ
Bar & Restaurant • 01669 650226
Accommodation • 07881 365809 • rooms@roseandthistlealwinton.co.uk
www.roseandthistlealwinton.co.uk


Local Private Hire Taxi Service

I've just set up as a Private Hire taxi service here in the valley. I live in Netherton so I'm local for the needs of people living and working here. My contact details are as follows:

Mobile number 07718 585508 and email rickyph24@gmail.com Web site details will follow shortly.

I have all my NCC licences and insurance in place and started the service recently. Please get in touch and I will get you to where you need to be!

Ricky Lawrence

<p><i>Sweeties</i> <i>Bridge Street, Rothbury</i> Sweets * Treats * Gifts* Pick & Mix* Slushies* Hot & Cold Drinks</p> <p>Traditional sweet shop stocking a large variety of sweets & chocolates. We can special order anything we don't have in stock. Now stocking Coquet Chocolate: Beautiful handmade chocolates & truffles, made in Rothbury.</p>	<p><u>DEFIBRILLATOR LOCATIONS</u></p> <p>Harbottle: Star Inn courtyard Holystone: Priory Farm wall Hepple: on the village hall wall Netherton: on the village hall wall Thropton: on the school wall Alwinton: car park on the toilet block wall Sharperton: End wall of Sawmill Close, nr junction Alnham: the wall of Kings Priory School Field Centre Biddlestone: wall of No1, Biddlestone Barn, NE65 7DT</p> 
<p><u>DRAKESTONE BUILDING SERVICES</u> Joinery, General Building, Tiling & Decorating Work</p> <p><u>Billy Gibson</u></p> <p>Tel: 01669 650206 OR 07979042499 Email: feeshearer@googlemail.com</p>	<p><u>Collins Fish Van</u></p> <p>Visits the area on a Thursday: Hepple Post Office: 8.00am Sharperton (on the hill): 8.30am Alwinton Village Green: 9.00am Harbottle (Chapel end then Pub): 9.10am Holystone Post Office: 9.40am</p>
<p><u>Northumbria</u> <u>Pet Crematorium</u></p> <ul style="list-style-type: none">• Beautiful Peaceful Environment• Compassionate and Caring Service• 100% Guarantee Your Pets Ashes Back• Pick Up & Delivery Service• 24hr Ashes Return Service <p>Tel: 07393 481 561 Email: northumbriapetcrem@gmail.com www.northumbriapetcrematorium.co.uk</p>	<p><u>POT HOLES DON'T REPORT THEMSELVES!</u></p> <p>Have a go after every journey as it is very easy to do. www.northumberland.gov.uk , scroll down to TOP TASKS and click on Report a Pothole. Alternatively phone them on 0345 600 6400.</p> <p>How easy is that? NCC defines "an actionable defect" as a pothole of at least 40mm (1.5 inches) deep and a minimum of 300mm (1 foot) in diameter. However, we think that if you aren't happy, then report it!</p>

NEW: RMAC Heating: Small business focussing on quality not quantity. With extensive experience in the Heating industry working as engineer and service manager I decided a few years ago to go solo and concentrate on the installation, service and repair of oil, gas and LPG boilers and heating systems. Undertaken work in Upper Coquet area as well as Alnwick & Morpeth. **Trades:** Gas Work, Central Heating & Plumbing. **Next Harbottle visit planned for 11th September 2025 so if you wish to coordinate with neighbours for a boiler service...please just get in touch.**



Humanities Tutor Available

French, English, History, Classical Civilisation & Ancient Greek

I am a student at the University of St Andrews studying English and Classics with over three years of tutoring experience to GCSE and A-level. Available for enthusiastic, student-led sessions online and in-person!

Email: ibredmaynecontact@gmail.com

Litter Challenge: Enjoy, Respect & Protect our Countryside

Please help; if you see it then please pick it up safely and bin it.

LOCAL EV CHARGING POINTS:

***ALWINTON CAR PARK *HARBOTTLE: IN FRONT OF THE SCHOOL**

Reminder from Northern Power Grid:

Winter is coming...Being winter ready isn't just about getting your big coat out. We know northern winters can be tough. Whilst we will do everything in our power to make sure the cold doesn't dampen our winter season festivities, the weather can be severe enough to damage your local electricity network.

We will do everything we can to prevent this, including spending millions of pounds on maintaining and looking after your power network. But it can still happen, particularly in winter weather. So, as we get ready for the season of fireworks and festivities, it's important that you know what to do and are prepared if your power goes off.

Support available for our customers

If you experience a power cut, the easiest way to report and access the latest information is via our website www.northernpowergrid.com/power-cuts. Alternatively, our teams are here for you 24/7 by calling **105..store this number on your mobile or address book**.

You can also find some useful hints and tips on our website at www.northernpowergrid.com/what-to-do-in-a-power-cut. Our customer support vehicles are prepared and ready to go out into local communities, where possible.

Power cut advice and tips include:

- Bookmark Northern Powergrid's online power cut map and reporting service on your mobile devices – www.northernpowergrid.com/power-cuts
- Have a charged mobile phone with important numbers saved, including 105, the free national power cut phone line.
- Turn off electrical appliances at the socket (this is particularly important for heating or cooking appliances as your power could be restored at any time and potentially cause a safety hazard).
- Keep one light switched on so you know when power is restored.
- Keep a battery-operated or wind-up torch handy – they're much safer than candles.
- Have a grab bag ready in your home with a torch, spare batteries, charged power banks, and a blanket - just in case!
- Check on your elderly or sick neighbours and relatives.
- Ensure you have warm clothing and blankets handy and some food and drink in your home that does not require electricity to heat or prepare it.
- Call 999 in the event of a medical emergency.

If you have additional needs due to your medical or personal circumstances, and are not part of our Priority Services Membership, you should consider joining for **free** by visiting [Priority Services Membership](#) or **calling 0800 169 2996**. This will help us to support you during a power cut. This will include regular updates on the situation and consideration of any need for provision of hot food and alternative accommodation.

Those who can join include customers:

- Of pensionable age
- Who have a hearing or visual impairment
- Who have additional communication needs
- Who are in a vulnerable situation
- Who have young children at home
- Who are disabled, chronically sick, or have a long-term medical condition

Please remember to check on neighbours, friends and family members who may need additional support.

CONTINUED OVERLEAF.....

An Updated Message from Harbottle Parish Council

CIVIL EMERGENCIES PLAN FOR HARBOTTLE PARISH

Emergencies resulting in loss of power, telephone, mobile telephone, water.
Damage to property

In the Event of Electricity Failure

The Emergency Hub at the Star Inn will come into operation in the event of a long power outage, especially if there is no indication when power will be restored.

A varied response will be needed according to the emergency, but as a general rule:

Loss of power overnight: Emergency hub will open up in the morning and remain open as long as needed.

Loss of power during the day: Emergency hub will open late afternoon/early evening to provide hot food, drinks and hot water.

A sign will be placed outside the Star to indicate that the Hub is open and we will endeavour to spread information by word of mouth or telephone if they are working.

Emergency Centre:

Star Inn, Harbottle: Telephone: 01669 650221
Equipped with generator and providing shelter, heat, hot water and food.

Main Contacts:

Harbottle:	Sue Bolam:	The Old Mill, 01669 650360
Holystone:	Stuart Wardlaw:	Lanternside, 01669 650409
Sharperton:	Joe Ormston:	North Sharperton Farm, 01669 650321

Other contacts:

Simon Kenny, Park House Farm:	01669 650250
Alan Stripp, Well House Cottage:	01669 650324
Northumberland County Council:	01670 627599; 0345 6006400

Other Resources

Two tents, 10m x 15m and 3m x 4m with lights and heaters
Contact: Simon Kenny

Parish Emergency Fund

Held by Harbottle Parish Council
March 2024

As Storm Eowyn raged the Warm Hub
Kicked In....Please remember this for next
time...

 **The Star Inn - Harbottle** 18h · 🌐

Our emergency warm hub is up and running in The Courtyard Barn via the generator. It's toasty warm with a log fire, tea/coffee facilities and WiFi. We also have food and drinks available via the pub/kitchen, eat-in or take-away. Tel: 01669 650221.

Everyone is welcome to use this space whilst the power is off, whether you buy anything or not. #StaySafe. #storm