

*'I want to say thank you.  
I don't know what I  
would have done without  
The Children's Society  
and I'm very grateful for  
everything they've done  
for me.'*

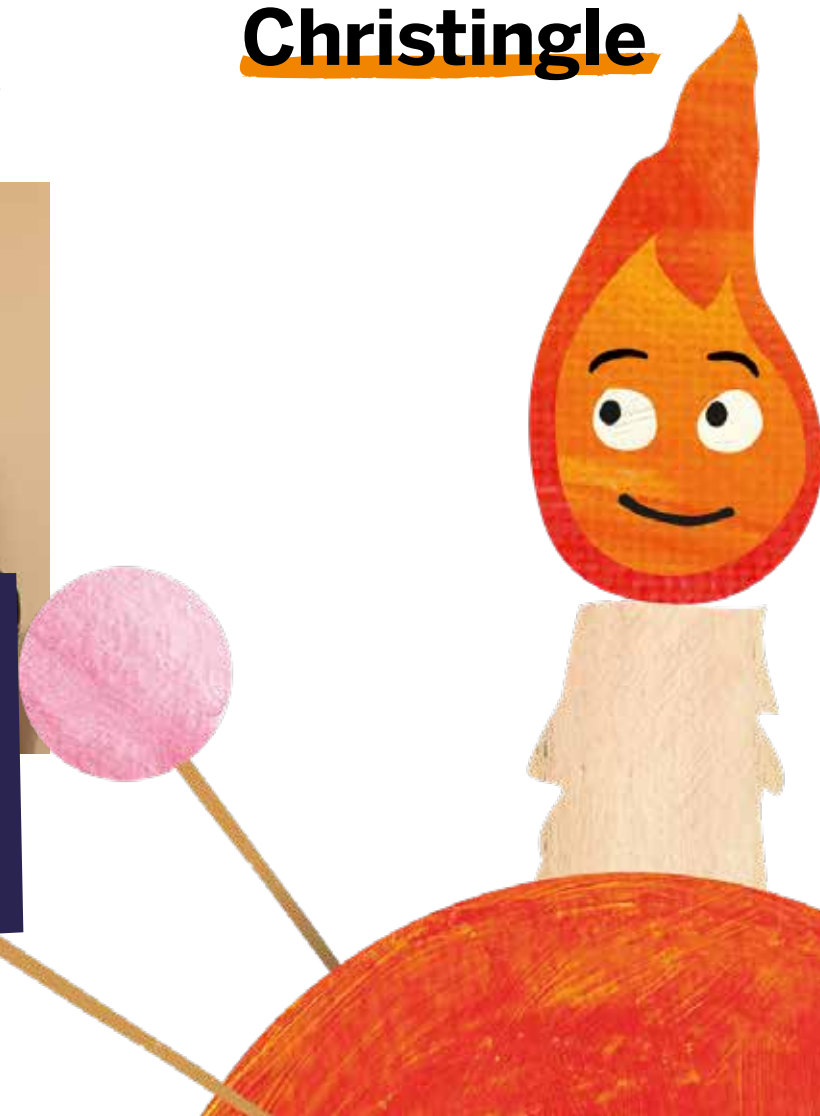
Alyssa



**Thank you so much for Christingling  
to support children like Alyssa.**

The funds you raise through your  
Christingle make such a huge difference  
to the lives of so many young people  
in this country. Because of incredible  
people like you, so many more children  
will now be safe, happy and hopeful for  
their future.

## How to Make a Christingle

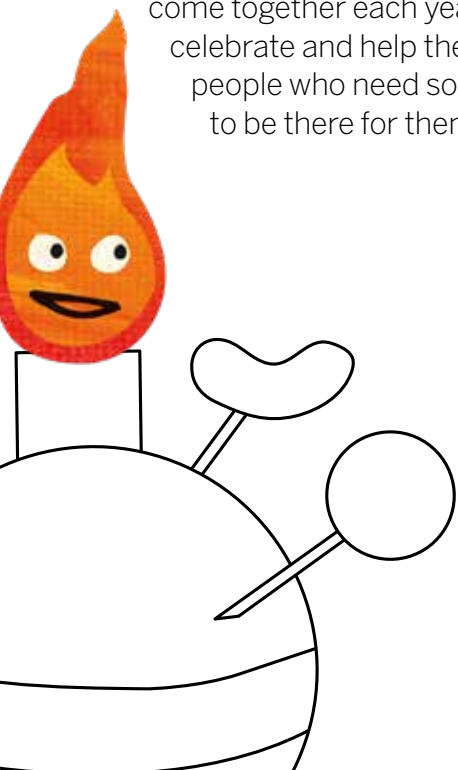


# What is Christingle?

**Christingle is a joyful celebration that brings families and communities together to have fun, share the light of Jesus and spread a message of hope.**

Christingle was originally started by the Moravian Church, and in 1968 John Pensom of The Children's Society held a Christingle celebration in Lincoln Cathedral as a way of raising funds to help our work with children.

Since then, thousands more churches, schools and communities across the country have joined the tradition and come together each year to sing, celebrate and help the young people who need someone to be there for them.



**Christingles are homemade using oranges and a few other bits, as you choose. Each element of a Christingle has a special meaning and helps to tell the Christian story:**

- The orange represents the world
- The red ribbon (or tape) symbolises the love and blood of Christ
- The sweets and dried fruit represent all of God's creations
- The lit candle represents Jesus's light in the world, bringing hope to people living in darkness.

During the service, each person takes a Christingle and the candles are all lit to create a warm glow symbolising the light of Christ and bringing hope to people living in darkness. It really is a special moment, and is usually one of the highlights of the celebration.

# Scavenger hunt

If you don't have the elements for a Christingle to hand, you can still easily make one from some easy-to-find things around the house. Here are some suggestions for items you could use to make your own Christingle, so why not send your household, school class or church group on a scavenger hunt to find them? This is a particularly fun activity to do with children!

**The world:** Your Christingle doesn't have to be three dimensional, you could draw one or make a flat representation. Or why not find something that represents God's creation to you, like a picture of a beautiful landscape, a collection of stones or shells or feathers?

**The red tape or ribbon:** If you don't have red string or wool, try something that symbolises love, like a heart shape, a ring or a special present.

**The cocktail sticks and sweets or fruits:** These represent the goodness of God's creation, but you can use something else that means this to you. Eg other foods, a favourite toy or a plant perhaps?

**The candle:** How about some decorative candles or a source of light like a torch or lamp?

Once you've made your Christingle or your representation of a Christingle put it in a safe position where you can see it or hold it in your hand and light the candle (or illuminate your light source).