

ETTINGTON AND FULREADY VILLAGE NEWSLETTER

June 2025



Newsletter Produced by:

Ettington Parochial Church Council

Newsletter Printed by:

Parish Magazine Printing, 01288 341617

With thanks to Ettington Parish Council for their continued financial support.

USEFUL LOCAL CONTACTS:

Ettington Parish Council

Clerk, Jane Carter, epc.clerk@yahoo.com

Ettington Church

Churchwarden, Phil Knight, 07886 126098
phoe100@btinternet.com

Ettington Community Centre Bookings

Eva Lowe
07975 682775
bookings@ettingtoncommunitycentre.co.uk

Ettington & Fulready Village Newsletter

Enquiries and/or contributions to Rennie Boreham,
the editor:

ettingtonfulready.newsletter@gmail.com

Deadline for contribution for the double issue

July/August 2025:

By WEDNESDAY 14th June 2025



June is the time of year when we really begin to enjoy the summer months isn't it?

The light nights and the sunshine (hopefully!) encourage us to spend more time outside in the fresh air. I love the summer months; it's the time of year when I feel most alive.

It's brilliant to spend time with family and friends, sharing food and socialising, even the sun makes things better! It's so important to spend time together to encourage friendships to grow and deepen. After all Jesus commanded us to love our neighbour and in order to love our neighbour, we need to get to know them, don't we? If you've not joined us yet for any of the church socials, I encourage you to come along.

The next event is the **Vicarage Garden church service and BBQ on Sunday 29th June (service at 11am, BBQ from 12.30pm)**, come along and enjoy the garden, food, a drink and good company. Then we have the church **Afternoon**



Teas every Sunday from 2pm in Alderminster throughout the month of June.

The early disciples spent a lot of time together; in fact, they shared life together. They had some amazing times together but there were also some difficult times. They were there for each other through it all – celebrating the good times and supporting each other and helping in times of difficulty.



I believe it was through this united bond, joined together in Christ, through His Holy Spirit, that they found the strength to face persecution and continue Jesus' mission to build the church.

In the book of Acts, we see they gathered together in prayer. What an important message that is for us today, we need to discover the importance of praying together and waiting on God. If you've not already joined us, why not come along to our **weekly prayer meeting every Tuesday evening at 6pm** (which rotates around the Benefice villages). It's so important to pray together, because when we pray God does act – it's amazing! Look what happened to those disciples, the Holy Spirit came upon them in the most amazing and powerful way, completely transforming them and the world as we know it! Have you experienced the Holy Spirit in your life? Have you asked the Holy Spirit into your life? Because with God's Spirit in us, we are slowly transformed each day to become more and more like Him, and we are also united with our Christian brothers and sisters around the world.

So why do I feel more alive at this time of year? Simple. We've just celebrated Easter, the most important event in the Church year, Jesus' death and resurrection which means sin and death are defeated, the victory is won! That's a great reason to feel alive. But Pentecost, the gift of the Holy Spirit is the gift which enables us to grow and live for Christ, the gift that ensures we are not alone. Christ is with us always – that's the reason why I feel alive, because Christ lives in me – what about you?

Friendship Faith
The Rector writes...

Rev'd Nicki

ETTINGTON CHURCH, PART OF THE STOURDENE GROUP OF CHURCHES

Visit the **Stourdene website** at stourdene.com where you will find contact information for all 6 Stourdene churches and information relating to life events such as baptisms, weddings and funerals. Contact **Revd Nicki Chatterton**, Rector of Stourdene, on email chat2rev.nicki@gmail.com or call **07769 871237**.



The next 2 sessions of the Bible Book Club will take place on **Tuesday 3rd June**, when we will discuss 1 Kings and **Tuesday 1st July**, when we will discuss 2 Kings. Both sessions will be at our usual time of **1.30pm in Ettington Church**. There will be no session in August.

The Bible Study group continues to meet every **Wednesday evening at 7.30pm** in each other's homes and has recently started an 8 session study book on The Lord's Prayer.

If you are interested in learning more about either of these 2 groups then please contact Jane Evans on janealisonevans@gmail.com or call 07802 348309. Newcomers would be very welcome to join these relaxed and friendly groups.



LEGO Café

Saturday 21st June

at Ettington church

2 - 4pm



Use your imagination to create and build with thousands of bricks, mini figures and accessories in this freestyle LEGO session.

Make new friends.

Enjoy delicious Coffee, Tea, Hot Chocolate and CAKE from our Pop-up Café while others build and you chat.



Fun for all ages!

Adult accompanied children please!

STOURDENE BENEFICE SERVICE ROTA - June 2025

JUNE 2025	Time	Church	Service Type
Sunday 1st	8.30am	Ettington	BCP Communion
	9.30am	Halford	CW Communion
	9.30am	Newbold	Morning Worship
	10am	Alderminster	Morning Worship
	11am	Pillertons	CW Communion
	6pm	Butlers	Evensong
TUESDAY 3rd	6pm	NEWBOLD	PRAYER WALK
Wednesday 4th	10am	Newbold	CW Communion
TUESDAY 10th	6pm	HALFORD	PRAYER WALK
Sunday 8th PENTECOST	9.30am	Butlers Marston	CW Communion
	9.30am	Halford	Morning Worship
	10am	Ettington	Morning Worship
	10.30am	Pillertons	Morning Worship
	11am	Alderminster	CW Communion
Sunday 15th FATHERS DAY	8.30am	Pillertons	BCP Communion
	9.30am	Halford	Morning Worship
	9.30am	Alderminster	CW Communion
	11am	Ettington	CW Communion
	9.30am	Butlers Marston	Family Service
	11am	Newbold	Morning Worship
TUESDAY 17th	6pm	PILLERTON	PRAYER WALK
Sunday 22nd	8.30am	Halford	CW Communion
	10am	Ettington	Café Church
	9.30am	Butlers	BCP Communion
	10 am	Alderminster	Morning Prayer
	11am	Newbold	CW Communion
	10.30am	Pillertons	Family Service
TUESDAY 24th	6pm	BUTLERS	PRAYER WALK
Sunday 29th	11am	VICARAGE GARDEN	BENEFICE SERVICE & BBQ

1st June	3pm to 5pm	Alderminster	CHURCH TEAS
8th June	3pm to 5pm	Alderminster	CHURCH TEAS
15th June	3pm to 5pm	Alderminster	CHURCH TEAS
22nd June	3pm to 5pm	Alderminster	CHURCH TEAS
29th June	11am	VICARAGE GARDEN Ettington	SERVICE & BBQ
29th June	7pm	Butlers Marston	BMCS CONCERT in church
29th June	3pm to 5pm	Alderminster	CHURCH TEAS



Ettington Village Summer Fete

Saturday August 30th 2-6pm

A fun day out for all the family!
FREE ENTRY!!

- "SCRUFFS"**
Ettington's
own Dog Show
- BBQ & Bar**
- Music &
Entertainment**
- Stalls & Games**
- Teas & Cake**
- Coconut shy**
- Facepainting**
- Splat the rat**
- Tombola**
- etc.**
- Tractor Rides**

Ettington Church – Ettington Pre School – Ettington Primary School – Ettington Community Centre



warwickshire open studios

21st June - 6th July 2025

Ettington Church, 3 Halford Rd, Ettington, Stratford-upon-Avon. CV37 7TH



Barbara Perkins



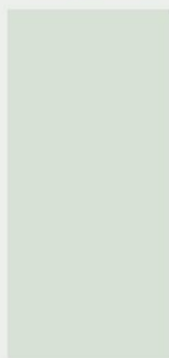
Kathryn Wickson



Usha Khosla



Jacky Buckingham



Kim Philpotts



Russell Gain



Jo Wade



Rod Perkins

Sat 21st June, Thurs 26th June, Fri 27th June, Sat 28th June, Thurs 3rd July
Fri 4th July & Sat 5th July 11-5pm
Sun 22nd June 12.30-5, Sun 29th June & 6th July 12-5pm.

VILLAGE BINGO on Friday 20th June from 7.15pm



Join us for an evening of fun and excitement at our Village Bingo Night, where laughter and lucky numbers go hand in hand!

After a night of bingo games, come back the next morning for a delightful Village Breakfast, filled with good food and great company.

VILLAGE BREAKFAST on Saturday 21st June from 8.00am



It's the perfect way to start your day and continue building our community spirit.

Mark your calendars and don't miss out on this double dose of village joy!



Tribute to Councillor Izzy Seccombe

A sincere tribute was paid to Councillor Izzy Seccombe, who is stepping down as County Councillor for the parish following the recent election. The Council expressed its gratitude for her many years of dedicated service to Ettington and the wider community.

Introduction of New County Councillor

The newly elected County Councillor, David Curtis, attended the meeting to introduce himself. The Parish Council and residents welcomed him and look forward to working collaboratively on local matters.

Request for 20mph Speed Limit

Residents raised concerns about traffic speeds through the village and requested that the Council approach Warwickshire Highways to explore the introduction of a 20mph speed limit. It was agreed that this issue will be added to the June meeting agenda for further consideration.

Support for Planning Application at Wilkes Farm

The Parish Council confirmed its support for planning application 25/00789/OUT, relating to Wilkes Farm, Fulready, Ettington (CV37 7PE). The outline application, with all matters reserved except for access, proposes the erection of one self-build dwelling to meet an identified local need, including widening and alterations to the existing vehicular access and all associated works. The proposal aligns with the priorities set out in the Neighbourhood Development Plan.

MUGA Booking and Payment to Begin

It was agreed that booking and payment for the Multi-Use Games Area (MUGA) will begin after the Spring Bank Holiday. Users will be able to book sessions via the Parish Council and Community centre websites using a debit or credit card.

Playground Toilet to Open Soon

The newly built toilet for users of the playground and playing fields will become fully operational once the remote locking system has been installed. A notice will be posted once it is ready for public use.

New Noticeboard Location

The noticeboard outside the Old Post Office will be removed. A new noticeboard will be installed near the village shop, where all future Parish Council notices will be displayed. Notices will also continue to be posted on the Parish Council website.



ETTINGTON “FRIENDS” MEETING HOUSE

**THE “FRIENDS”
MEET ON SUNDAYS
AT 11AM AT THE
MEETING HOUSE ON
HALFORD ROAD.**

In aid of St David's Church Newbold on Stour with Armscote

CantamuS

An "a cappella" choir

sings



Music for the Soul

with readings by Anne Hume



On Saturday 28th June

7pm for 7.30 start

at St David's Church CV37 8TT

A relaxing and reflective selection of music from Rachmaninov, Byrd, Parry and others interspersed with witty and entertaining readings.



Tickets: £15 each available from

Gillian Marsden 01789 459168 gillykm@yahoo.co.uk

Hilary Roesen: haroesen@hotmail.com

Raffle

Licensed Wine Bar

www.cantamus.org.uk

ETTINGTON COMMUNITY CENTRE

Could You Be Part of the Team Running Our Community Centre?



One of the village's greatest treasures is our vibrant, modern, and beautifully equipped

Community Centre. It's a busy hub of activity, welcoming people of all ages for everything from fitness classes to social clubs, community meetings to children's events—week in, week out.

But behind the scenes, it takes a team of dedicated Ettington volunteers to keep things running smoothly — and now, we're looking for a new one!

Opportunity Alert: Maintenance Manager Needed

Our brilliant Maintenance Manager will be stepping down after six incredible years of service. So, we're on the lookout for someone (or maybe even a dynamic duo!) to step into this vital role.

What's Involved?

Don't worry—this isn't a hands-on building job! You won't need any special qualifications, just a watchful eye, some basic common sense, and a bit of spare time, occasionally a bit of DIY, all to help us keep the Centre in tip-top shape.

You will:

- Monitor the condition of the building and equipment.
- Arrange for repairs with trusted tradespeople. (We have a great list of contractors!)
- Help ensure everything is working as it should.

Who Might This Suit?

If you're recently retired, working part-time, or just keen to give something back to your community, this could be a perfect fit. You'll have plenty of support—including a friendly handover from the current Maintenance Manager, who'll still be around to help you, as will other members of the trust team.

Want to Learn More?

If you're curious, interested, or just want a tour of the Centre to see what it's all about, drop us a line at **roger.gollicker@ettingtoncommunitycentre.co.uk**.

We'd love to hear from you!

Let's keep our Community Centre the heart of the village - together.

Ettington Community Centre is a perfect venue for parties, business meetings, workshops and self-catering christening/baptism parties, weddings and wakes. With three differently sized rooms available, space can be configured flexibly to suit your needs. The centre is served by superfast broadband, which is available throughout the building.

For bookings and enquiries, please contact Eva Lowe on 07975 682775 or email booking@ettingtoncommunitycentre.co.uk.

UNACCEPTABLE

**THIS HAS TO
STOP**

Vandalism at the Community Centre

please help us to stop it

We have nearly 40 airbricks around the base of the centre and over the years, all of them have been broken and kicked in.

As a result, we've now experienced the infestation of mice on the first floor since last winter. They simply gain entry via the airbricks, climb up the wall cavities and then set up home.

At considerable cost we've now eradicated the problem and had all the airbricks covered with special metal mesh covers.

However, within weeks we've already had around 5 new covers kicked in. These will now need to be repaired or replaced, costing us yet more money.



Your cooperation, help and observation in trying to stop this, would be much appreciated.



Local News

Tea Dances with music to dance and sing to for all the different charities we support each year take place **in the main hall of the Community Centre every second Wednesday** of the month from **2.30pm**. Next session is on **11th June 2025**. There's lovely CD music to sing to, listen to or dance to like Waltzes, Quicksteps, Cha Cha Cha and Rumba. It costs £5 per person which includes tea/coffee and biscuits. Further details can be obtained from **Alan** and **Vivian** on **01789 204989** or by email to ilov2getherdancing@hotmail.com. **Everyone Welcome**.



Mobile Library in Ettington



The van will continue to visit on a **Wednesday** and stops at The Chequers at **11:05-11:25**. The next date is **25th June**. For all enquiries or to renew books, telephone **01926 851031** or renew online at Warwickshire.gov.uk/libraries.

Dial a Ride UBUS Service in Ettington

UBUS dial a ride community transport service operates in Ettington and surrounding villages on Tuesdays, Wednesdays and Thursdays between 9.30am–2.30pm. Travel locally and into Stratford-upon-Avon to go shopping, visit friends or attend social groups. To register with UBUS or for more information please **call 01789 264491** between 8.30am-6pm Monday-Friday. Return journey fare from £6.00.



Stratford on Avon Pickleball Club

A new sport to the area at the Meon Vale Leisure Centre, **Monday and Wednesday afternoons 2pm until 3:30pm**. Pickleball is a paddle sport that combines elements of tennis, badminton, and table tennis using a paddle and plastic ball with holes. It's a game that is appropriate for players of all ages and skill levels. Rules are simple, making it a great introductory sport. It can be easy for practically anyone to learn how to play the game. Whether you're a beginner who just wants to learn a new sport for fun, or you're a seasoned player who craves the thrill of more competitive play, Pickleball has something for everyone. It also offers some great exercise for your balance, agility, and hand-eye coordination without putting excessive strains on your body. So, if you're interested, contact graeme.smith30@btinternet.com.





Licensed bar open throughout the evening

FRIENDS OF ETTINGTON SCHOOL

FAMILY QUIZ NIGHT

Saturday 28th June, Ettington Community Centre,
quiz starts 6pm prompt. Adult £5, Child £2



8 rounds, including a kids only round

Featuring Mrs Crowe as your quizmaster!

THE STREET FOOD CO.

CATERING & EVENTS

Maximum 10 people per team. Tickets are limited, so please buy early to avoid disappointment.

Ticket sales will close on 31st May, and are available at Ettington Village Store and online (subject to small booking fee). Scan the QR code to buy tickets.



Neapolitan pizza available to preorder from The Street Food Co. Limited time slots available between 5.30 and 9.00pm. Pizza van available to the wider community, so don't miss out! Scan the QR code to order.

All proceeds from the quiz go to FoES and will be used for the direct benefit of the children.

Ettington Village Store & Post Office

**Monday-Saturday
7:00-20:00**

**Sunday & Bank Holidays
8:00-18:00**



Ettington Village Store



There for you



**Evri
Amazon
Royal Mail
Banking
Cash withdrawals & Deposits**

**Shopping Essentials
Local Suppliers
Community Support**

Monday-Friday

8:30-16:00

Saturday

9:00-13:30

Coffee

Cakes

Paninis

6 Banbury rd, Ettington

Email: ettingtongardencafe@gmail.com



Perfect for:

WFH

Meetings

Relax & Catch up

Private Events

Plant Sale



Ettington Garden Cafe





Astronomical Society News

by Adrian Wakeham and Dave Benton

The Stratford-upon-Avon Astronomical Society meets **every first and third Tuesday at 8pm (doors open at 7.30pm) at Alderminster Village Hall**. Everyone is welcome, especially beginners and those wanting to learn more. The **first Tuesday** is a club night, in June that will be on **3rd June** and the speaker on the **third Tuesday 17th June 2025** will be Professor Christine Done, from Durham University, with a talk called "Black Holes – recent breakthrough results". Please note that the speakers usually start quite promptly at 8pm.

Return to the Moon.

In the last year or so, and probably in the next few months, you'll hear about America's plans to return to the Moon.

When, in December 1972, as astronauts Harrison Schimdt and Gene Cernan sealed the lunar module before returning to the command module of Apollo 17, not many thought it would be over 50 years before humans would return to the Moon.

Many countries have sent missions to the Moon and landed on the lunar surface. The Russians and Chinese have returned samples of the surface. The Chinese from the far side (also known as the dark side).

Artemis 1 was an unmanned version of the craft which America hopes to use to return humans to the Moon, and this orbited the Moon in 2022. Artemis 2 intends to send four astronauts into lunar orbit but not land. This is unlikely to be before April 2026.

If successful Artemis 3 will land astronauts on the Moon. It will carry four Astronauts, including a woman, an African American and a non-American. The mission is intended to last 30 days.

It intends to land close to the South Pole, hoping to find water, which will be very useful for any permanent lunar settlement.

Credit to NASA



The next stage will be a permanent lunar gateway in orbit. Then, the next challenge would be to launch a mission to Mars, from the Moon base.

One 'fly in the ointment' for the Americans could be the Chinese. They are secretive about their future plans and may try to beat the Americans in this new space race!

Club nights offer more information on what to look out for each month. If it is clear we do some observing just outside the Village Hall, so please join us. There is no charge initially to come along and find out more, but if you do want to become a member then the fee is just £15 a year and it's free if you are in full time education. For more details go to the website <http://www.astro.org.uk> or contact the Chair, John Waller john.waller@astro.org.uk or on 07703 192188.

Happy Observing!

Carers4Carers monthly meeting held at **Kineton Village Hall, Friday 27th June from 10:30 am to 12:00 noon**. We'd love to welcome you to our carers' group for refreshments, chat and mutual support.

Come along and discover the multitude of disability aids now available. Please bring along your loved ones - they can join our Companionship Group while we meet. For further details about our group or help with transport arrangements to/from our meetings, please contact Gillian on 07947 893504, send an email

to kcarers4carers@gmail.com, or explore our website www.carers4carersonthefosse.org.uk.



ALDERMINSTER GARDENING CLUB

For the summer months the Club goes on monthly outings, to local gardens.

On **THURSDAY June 26th**, we are joining the Farm Women's Club to visit The Heroes and Villains Gardens at Dorsington, belonging to the late Felix Dennis. Cost is £ 24.00 to include a talk and refreshments, due to start at 2.00p.m. This trip is by car, leaving **Aldermminster Village Hall** at 1.20 pm, please contact Gill on 01789 621053 if you want to come, as I will have to pass nos on to FWC, lifts may be available.

Other events in **June** are an open day at Maxstoke Castle, near Coleshill, see <http://www.maxstokecastle.com>, on **SUNDAY June 15th 11-5**, tickets only available through the website. Well worth a trip, as is Guys Cliffe Walled gardens, Warwick, open for cream teas on **SATURDAY June 21st**, see <http://www.guyscliffewalledgarden.org.uk>, these gardens are run by a charitable trust and include a good nursery.



REPAIR CAFE Wellesbourne

June 7th

at ...

The Methodist Hall

Bridge Street CV35 9QP

Everyone Most Welcome

10-12pm

10-12pm

REFRESHMENTS

Tea - Coffee - Cakes & Chat!!

**Let's All Make an even
Bigger Difference in**

2025 !

**Electrical
Items can be
PAT Tested**

The House of Bread is a Christian retreat and a conference centre in the heart of England, in south Warwickshire. It has a long history as a retreat house welcoming individuals and groups to a tranquil, restful setting with a river, gardens and fields.

We offer comfortable accommodation for day and overnight guests in a converted flour mill on four floors. We also have additional meeting rooms in a converted barn and stable block. We sleep up to 36 guests in 19 en-suite bedrooms, and we have meeting spaces for up to 50 guests. We offer self-catering accommodation; many groups will book one of our recommended caterers.



Open Day

**Saturday 14 June
11am - 5pm
All welcome**

- Cream teas
- Book sale
- Plant sale
- Art exhibition
- Guided tours
- Craft sales

Lots to see - relax in the gardens and grounds or take a riverside walk.



The House of Bread • The Mill
Burmington
Shipston-on-Stour
Warwickshire CV36 5AF
thehouseofbread.org
t: 01608 663952
e: contact@thehouseofbread.org



A Christian retreat centre in the heart of England

In recent years, The House of Bread has undertaken many improvements and developments, both in the house and in the gardens and grounds. For those who may have been here in the past, but not in recent years, we would love to welcome you to come and see the developments. For those who have not discovered us yet, we would love to welcome you to come and discover what we offer to our guests and groups that want to take time on retreat or gather with others for team building days or overnight events.

We look forward to seeing you at the Open day: look around the site, there will be an Art exhibition, crafts and plants for sale, and cream teas <https://www.thehouseofbread.org/>



Wellesbourne & District Lions Club

Incorporating Wellesbourne & District Lions Club Charity Trust
Registered Charity Number 1061868



Local Lions Club sends aid to help the disaster in Myanmar

Following the devastating 7.7 magnitude earthquake on March 28th that affected Myanmar and Thailand, nearly 4,000 people have lost their lives and more than 5,000 have been injured and countless families displaced.



As a local charity, Wellesbourne and District Lions not only raise money to support the local community but are also able to donate to emergencies around the World through the Lions

International movement. In over 200 countries and 48,000 clubs it has 1.4 million members which means that when disasters strike, Lions International can quickly provide support to disaster areas. Wellesbourne and District Lions were able to donate £500 to the disaster relief fund to help those affected in Myanmar and Thailand.



Closer to home in April we were out in the community raising £450 with our Easter Egg Raffles. Many thanks to Wellesbourne Sainsburys, Barford Village Shop, Ettington Shop & Post Office and Massimo Barbers for holding the raffles and a big thank you to all those that donated.

There were 5 lucky winners, and we hope they all enjoyed their eggs!

You can find out more about the Lions charity on [facebook.com](https://www.facebook.com/wellesbourne-lions) and their [website](https://www.wellesbourne-lions.org.uk)
Or email us at info@wellesbourne-lions.org.uk

Very simple recipe for Refreshing Chia Lime Drink

Soak **1 teaspoon of chia seeds** in just enough hot water (to speed up the soaking process). They'll absorb the liquid and swell quickly.

If you have **goji berries**, soak it along with the chia seeds. It adds colour and texture.

Squeeze the **juice of one fresh lime** into 1 cup of cold water.

Add **brown sugar** to taste (if using) and stir well until dissolved.

Stir in the soaked chia seeds along with goji berries if using.

Just before serving, add slightly **crushed mint leaves** for a cool, refreshing twist.







Beau Elme Bakery



Celebration
Cakes, Treat
Boxes and
Wholesale
Cakes

Victoria Stokes
Artisan Baker



@beau_elme_bakery

f Beau Elme Bakery

✉ beauelebakery@gmail.com

📍 Ettington, Stratford upon Avon

Keeping Connected

"I am so happy to have a new friend.
We all need friends."



Are you a caregiver, or someone who has lost a loved one?
Perhaps you're living with an illness that means you can't
get out as much as you'd like.

We have telephone befrienders and pen pals who can offer
regular, meaningful conversation and companionship.

At Omega we understand the importance of meaningful
relationships for health and wellbeing, but we also know
how difficult it can be to meet new people or maintain
connection with those around you.


Our telephone befriending programme, Chatterbox
Action Against Loneliness, and our pen pal service, A
Letter from Louise, are both completely free. If you'd like
to find out more, please contact us at:

01743 245 088 or info@omega.uk.net



Omega, the National Association for End of Life Care | Registered Charity No. 1120322

www.omega.uk.net

Find us on Facebook, Twitter and Instagram at @OmegaConnected   

Local client-led
care helping you
**stay living
happily at home
for longer.**



Book a FREE no-obligation chat

07784 437995

www.dreamteamcareathome.co.uk



dream team
CARE AT HOME

Shipston-on-Stour, Wellesbourne and surrounding villages



WordPress
Web Design

- ✓ Full Website Design
- ✓ Website Maintenance
- ✓ Custom Development



Fully Managed Search
Engine Optimisation

How is your
website really
performing?

Found for the
right keywords?

We Can Help 🙌



Domain
Names



Website
Maintenance



Google
Workspace



cPanel Web
Hosting



</encode>

We make the
web work for
you

<https://encode.host>
hello@encode.host
0330 123 4000

PRIVATE HOME CARE SUPPORT

With 10+ years' experience in the NHS
Full driving licence Fully insured Enhanced DBS check

Services include:

Rehabilitation/Reablement care (post-hospital
discharge following an illness or injury)
Companionship care Respite care
Social visits/outings

Contact Karen Wilkes on 07834 607368

Email k_pownall@hotmail.com

BA (Hons) Health Studies, BSc (Hons) Occupational Therapy

Weekly
Monthly
or

One-off clients



by Jo

Est. 1988

Ladies
Gents
and
Children

*For styling
in the comfort of your own home
telephone Joanne
01789 741933 or 07778 569984*



PURE PERFORMANCE
PHYSIOTHERAPY

Physiotherapy | Sports & Remedial Massage |
Injury Prevention | Sports Injuries | Strength Training

Based in Wellesbourne

07796620081

www.pureperformancephysio.co.uk

info@pureperformancephysio.co.uk



All aspects of plastering.
Full renovations and refurbishments.
Clean, reliable and local service
based in Ettington.

Tel: 01789 748188 or 7957 645911
enquiries@acornplasteringservices.co.uk

Plastering • Skimming • Coving • Tiling
Painting • Renovation • Refurbishment

MADDY JAMES COUNSELLING

**Anxious? Stressed?
Depressed?**

Feelings of hopelessness?

Counselling offers a unique time and space to be
heard and accepted in a non-judgemental and
confidential place which enables a process of self
reflection and personal growth



MADELEINE JAMES MBACP DIP COUNSELLING

Tel: 07974 051713

Email: maddy.james@yahoo.co.uk

www.maddyjamescounselling.co.uk

SHINEBRIGHT OVEN CLEANING

You Cook - We Clean



My name is Richard,
I clean ovens.
It is my pleasure
to make them
SHINE as good as new and **BRIGHT**
for you!
Your oven will be virtually like new!
Please contact me for further details:
07801 442523

We cover Stratford upon, Warwickshire & surrounding areas. *On Facebook*
www.shinebrightovencleaning.com Based in Ettington, near Stratford upon Avon

AT ONE PILATES

Pilates Classes
All age groups & fitness levels
Mondays & Thursdays 9am
Ettington Community Centre
£8 per session
Contact: Beverley Smith
Mobile: 07977 142339
Email: atonepilates@gmail.com

Painting & Decorating

by Keith Harriss

- Fully Insured
- References Available
- Experienced & Professional
- Quality Work at Affordable Prices



Tel: 01789 740842 Mobile: 07814 482699
Email: keith@keithharriss.co.uk Web: keithharriss.co.uk



*Relaxation
you deserve*



Jayne Amanda
Reflexology & Reiki



www.reflexologywarwickshire.co.uk
in Ettington
email: 1jayneamanda@gmail.com

Fully
Insured

SMARTSCAPE HARD LANDSCAPING

*Patios & decking • turfing • garden clearance
tree work • hedge cutting • driveways
fencing • seasoned firewood*

Clive Smart

Tel: 01789 459164 Mobile: 07973 850502

E: clive.smartscape@gmail.com  Find us on facebook

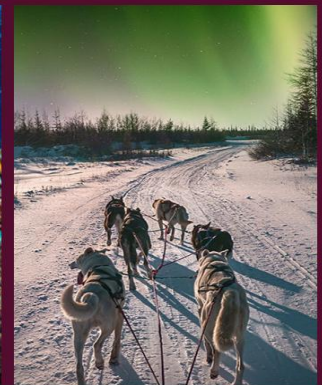


Ofsted said "Children flourish in this extremely caring learning environment. High priority is given to children's emotional well-being. Staff are extremely sensitive towards children's needs. They support children skilfully to develop secure attachments and self-confidence."

If you would like your child to experience this wonderful Pre-School and they are aged between 2 and 4, then please call us to arrange a visit.

Ettington Pre-School Ltd, Churchill Close, Ettington, Stratford upon Avon, Warwickshire, CV37 7SP. Tel: 01789 740919, email info@ettingtonpreschool.co.uk or website www.ettingtonpreschool.co.uk.

 **travel
counsellors**



EXPERIENCE THE WORLD YOUR WAY

T: 01386 897 830 E: melissa.coleman@mytc.com



AVON BOILER CARE

For Your Heating & Hot Water Needs

OIL FIRED BOILER SPECIALISTS



Fully Qualified Oftec Registered Engineers Based In Ettington

• Contact us for :

- Oil Boiler Installations, Commissioning, Servicing & Breakdown Repairs
- Central Heating Installations & Maintenance
- Unvented Hot Water Cylinder Installations, Commissioning, Servicing & Maintenance
- General Plumbing Works



Tel/Whatsapp: 01789740031 - Email: avonboilercare@gmail.com - www.avonboilercare.co.uk

MeMyBrow&Eye

Transform the way you look and more importantly, how you feel with High Definition Brows

More than just eyebrow shaping • Combination of tinting, waxing, threading and shaping • Can transform even the unruliest, sparse or over-plucked brow into perfect arches • The shape is tailored exclusively to suit your personal style • The effects are so good, they have even been compared to a mini-facelift • As a branded product, every treatment is performed using specially formulated HD products

Call Julia Knight on **07770 418483**
www.memybrowandeye.com

Singing Lessons

It's easier than you think!!

Have fun, sing songs you love!

All styles

All abilities

Beginners welcome

Tel: 01789 751 325 / 07970 370 240

email: claudia.kla2@gmail.com

HELPING YOU REMAIN SAFE AND INDEPENDENT AT HOME.....

Assessment and Advice on Equipment and Adaptations

KATE ALLEN

Independent Occupational Therapist

07434 046967

kate@occupationaltherapyathome.co.uk

www.occupationaltherapyathome.co.uk



MATHS TUITION

EXPERIENCED MATHS TEACHER

11+ THROUGH TO GCSE & INTERVENTION SPECIALIST

(online tutorials are available via ZOOM or SKYPE)

"John helped my daughter exceed her targeted GCSE grade and as importantly, improve her confidence and enjoy Maths!"

Contact John: 07876 592152 email: john.eyes@btinternet.com

Finishing Touches

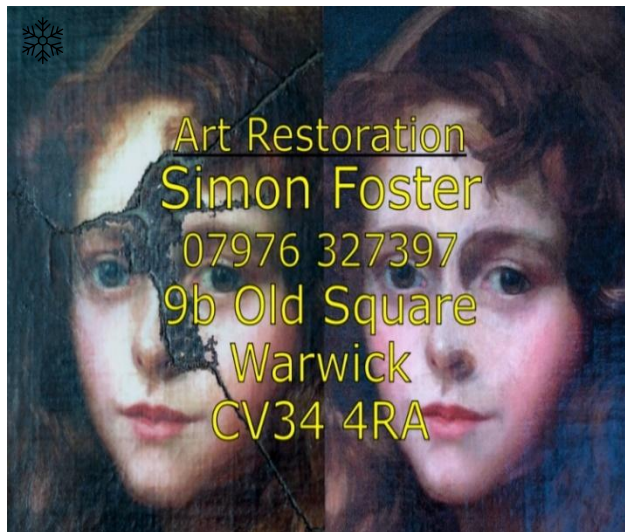
Bespoke soft furnishings established 1990

- Curtains
- Pelmet
- Cushions
- Headboards
- Blinds - Roman, Venetian, Vertical, Roller, Twist, Shutters, Duette & Plisse
- Upholstery
- Poles
- Tracks
- Fabrics

Full measuring & fitting service

finishing-touches.info
sales@finishing-touches.info
01789 751899

Finishing Touches, Apple Edge, Headland Road,
Welford on Avon, Warwickshire, CV37 8EX



No responsibility can be taken by the editor or Ettington Parochial Church Council, or any individual connected to it, if the advertisers in this newsletter do not meet customer expectations.

COTSWOLD GARDEN DESIGNER

- Looking to improve your outside space but stuck for ideas on how to make the most of it?
- Want somewhere to entertain?
- A space for your children to play?
- Or maybe you just need a quiet place to relax, a calming, scented corner, just for you?



I can provide a full garden design, planting plans or a simple garden report - some ideas of how you could best use your outdoor space and the types of plants that you like and would suit the environment.



CONTACT LORRAINE:

lorraine@cotswoldgardendesigner.co.uk
07516262560
www.cotswoldgardendesigner.co.uk